

St. Cloud State University

The Repository at St. Cloud State

Statewide Surveys

SCSU Survey

Fall 2010

SCSU Annual Fall Statewide Survey [Fall 2010]

St. Cloud State University

Follow this and additional works at: <https://repository.stcloudstate.edu/sws>



LAST UPDATE 10-25-10

METHODOLOGY AND QUESTIONNAIRE

FINDINGS WILL BE ADDED AS ANALYSIS COMPLETED

ST. CLOUD STATE UNIVERSITY SURVEY

**FALL 2010
STATEWIDE SURVEY OF MINNESOTA ADULTS**



THE SCSU SURVEY PRINCIPAL RESEARCHERS ARE MEMBERS OF THE MIDWEST ASSOCIATION OF PUBLIC OPINION RESEARCH (MAPOR) AND THE AMERICAN ASSOCIATION OF PUBLIC OPINION RESEARCH (AAPOR) AND SUBSCRIBE TO THE CODE OF ETHICS OF THE AAPOR. ALL DIRECTORS SUBSCRIBE TO THE CODE OF ETHICS OF A.A.P.O.R. We subscribe to the A.A.P.O.R. transparency initiative.

OCTOBER 25, 2010

PRINCIPAL INVESTIGATORS SCSU SURVEY

DR. STEPHEN I. FRANK
PROFESSOR, DEPARTMENT OF POLITICAL SCIENCE
CO-DIRECTOR, SCSU SURVEY
COLLEGE OF SOCIAL SCIENCES
ST. CLOUD STATE UNIVERSITY
302 51-B 320-308-4131
sfrank@stcloudstate.edu

DR. MICHELLE KUKOLECA HAMMES
ASSOCIATE PROFESSOR, DEPARTMENT OF POLITICAL SCIENCE
CO-DIRECTOR, SCSU SURVEY
COLLEGE OF SOCIAL SCIENCES
ST. CLOUD STATE UNIVERSITY
301 51-B
320-308-4130
mhammes@stcloudstate.edu

DR. JOHN T. KULAS
ASSOCIATE PROFESSOR, DEPARTMENT OF PSYCHOLOGY
CO-DIRECTOR, SCSU SURVEY
COLLEGE OF SOCIAL SCIENCES
ST. CLOUD STATE UNIVERSITY
303 Whitney House
320-308-3234
jtkulas@stcloudstate.edu

DR. DAVID H. ROBINSON
PROFESSOR, DEPARTMENT OF STATISTICS AND COMPUTER NETWORKING
CO-DIRECTOR, SCSU SURVEY
COLLEGE OF SCIENCE AND ENGINEERING
ST. CLOUD STATE UNIVERSITY
237 Engineering & Computing Center
320-308-2149
dhrobinson@stcloudstate.edu

DR. STEVEN C. WAGNER
PROFESSOR AND CHAIRPERSON, DEPARTMENT OF POLITICAL SCIENCE
CO-DIRECTOR, SCSU SURVEY
COLLEGE OF SOCIAL SCIENCES
ST. CLOUD STATE UNIVERSITY
304 51-B
320-308-5423
swagner@stcloudstate.edu

DR. SANDRINE ZERBIB
ASSISTANT PROFESSOR, DEPARTMENT OF SOCIOLOGY AND ANTHROPOLOGY
CO-DIRECTOR, SCSU SURVEY
COLLEGE OF SOCIAL SCIENCES
ST. CLOUD STATE UNIVERSITY
266 Stewart Hall
320-308-3046 sazerbib@stcloudstate.edu

IV. SURVEY METHODOLOGY

The Fall 2010 St. Cloud State University Survey findings are based on telephone interviews with a representative sample of 628 (weighted and un-weighted) adults in Minnesota. The sample included both landline phones and cell phones. Interviews were conducted from October 10 to October 21, 2010 at the St. Cloud State University Survey Lab. The sample was obtained from Survey Sampling International (SSI) of Fairfield, Connecticut.

Sample Design

The sample was designed to represent all adults (age 18 and older) with a landline or cell phone in Minnesota.

Landline Phones: The landline telephone numbers were drawn using standard list-assisted random digit dialing (RDD) methodology. Random digit dialing guarantees coverage of every assigned phone number regardless of whether numbers are directory listed, purposely unlisted, or too new to be listed. The numbers were generated from active blocks, proportionally to the number of landline telephone households by county.

Using the RDD database of active 100-blocks of telephone numbers (area code + exchange + two-digit block number) that contain three or more residential directory listings, selections were made in proportion to the block count of listed telephone households. After selection two more random digits were added to complete the number. Completed numbers were then compared against business directories, and listed business numbers were purged.

Cell Phones: The cell phone numbers were drawn from the most recent Telcordia TPM master file of NPA-NXX and Block-ID records for the North American Number Plan. All records from NPA-NXX and 1000 blocks that indicated a cell phone service, were included in the wireless sampling frame. New exchanges were included, as were shared blocks.

Each exchange and 1000-block in the frame was expanded down to the 100-block level. Shared 100-blocks were then compared to the RDD database, so that the 100-blocks with no listed numbers were left in the wireless sample, while the 100-blocks containing listed numbers on the RDD frame were removed from the wireless sample. This resulted in a wireless frame of 100-blocks that had no overlap with the list-assisted RDD sample described above. Two more random digits were then added to complete the number.

Student Callers

After five or more hours of training and screening, approximately 40 students from Professor Sandrine Zerbib's Sociology 303 – Research Methods, Professor Steve Frank's Political Science 201 – Political Science Research Methods, Professor

Kukoleca Hammes's Political Science 101 – Political Ideas and Institutions, completed the calling. Faculty directors and student directors monitored the interviewing. Student directors conducted both general training sessions and one-on-one training sessions, as well as monitoring all interviewing.

Contact Procedures

Before calling began, the original sample consisted of 2,987 landline and 2,000 wireless (cell) phone numbers. After completing the survey, the total sample consisted was 628 respondents, before and after weighting. In the weighted sample, 416 were on landline phones and 212 were on cell phones. See below for more information on the weighting procedure.

The sample was released for calling in replicates, which are representative subsamples of the larger sample (110 phone numbers for landlines and 100 phone numbers for wireless). Using replicates to control the release of sample ensures that complete call procedures are followed for the entire sample.

Several steps were taken to ensure that the telephone sample of adults in the state was representative of the larger adult state population. Interviewers for landline numbers alternately asked to speak with men and women, and oldest and youngest person (age at least 18 years old) at the households that were called. This systematic respondent selection technique has been shown to produce samples that closely mirror the population in terms of age and gender. For cell phone numbers, the interview was completed with the person of initial contact, provided the contact person was at least 18 years of age and a Minnesota resident.

Phone numbers with no initial contact were called up to 10 times over different days and times to increase the possibility of contact. In addition, appointments were made as necessary to interview the designated respondent at his/her convenience. Calling was completed between 4:30 pm to 9:30 pm to maximize contacts and ensure equal opportunities to respond among various respondent demographic groups. Attempts to convert initial refusals commenced almost immediately and continued throughout the survey. The final few nights of interviewing were almost exclusively devoted to contacting hard to reach respondents who often are younger and more affluent.

Technology

The SCSU Survey operates a Computer Assisted Telephone Interviewing (CATI) Lab on the St. Cloud State University campus. The CATI Lab is equipped with 19 interviewer stations; each includes a computer, a phone, and a headset. In addition to the interviewer stations, there is the Supervisor Station, which is used to monitor the survey while it is in progress. The SCSU Survey has its own server designated solely for the use of the SCSU Survey.

The SCSU Survey is licensed to use Sawtooth Software's Ci3 Questionnaire Authoring Version 4.2, a state-of-the-art windows-based computer-assisted interviewing package. This program allows us to develop virtually any type of questionnaire while at the same time programming edit and consistency checks and other quality control measures to ensure the most valid data. The instrument was pre-tested prior to interviewing to make certain that all equipment and programming was in working order and to verify that the questionnaire was clear.

All interview stations are networked for complete, ongoing sample management. Sawtooth Software's Ci3 allows immediate data updating, ensuring maximum data integrity and allowing clients to get progress reports anytime. The Survey directors are able to review data for quality and consistency. Question answers are entered directly into the computer, thus keypunching is eliminated, which decreases human error and facilitates immediate data analysis. The calling system is programmed to store call record keeping automatically, allowing interviewers and supervisors to focus on the interviewing task. Callbacks are programmed through the computer network and made on a schedule.

Sample Error

The margin of sampling error for the complete set of weighted data is ± 5 percent at the 95 percent confidence level. In all sample surveys there are other possible sources of error for which precise estimates cannot be calculated. These include interviewer and coder error, respondent misinterpretation, and analysis errors. When analysis is made of sub-samples such as respondent gender, the sample error may be larger.

Sample Weighting

Weighting is generally used in survey analysis to compensate for patterns of nonresponse that might bias results. The interviewed sample of all adults was weighted to match parameters for ownership of the two types of phones, as well as gender and age. The phone ownership parameters were determined from the 2008 National Health Interview Survey, while the age and gender parameters came from a special analysis of the Census 2000 Summary File 4 (SF 4). All statistics reported are weighted.

Weighting was accomplished using statistical raking, a special iterative sample weighting technique that simultaneously balances the distributions of all variables. The use of these weights in statistical analysis ensures that the demographic characteristics of the sample closely approximate the demographic characteristics of the Minnesota population.

Questionnaire Rotation-Alternative Wording

In addition to the main body of the questionnaire, there were screening questions and demographic questions. Within the questionnaire, rotation was used for three questions GOV1A, GOV1B, GOV1C, to insure responses were not biased due to answer order.

The three questions listed the three major candidates so that a third of the sample was asked to identify their preferred candidate for Minnesota Governor with Mark Dayton listed first, a second third was asked with Tom Emmer listed first and the final third of the sample was asked to identify their gubernatorial choice with Tom Horner listed first.

Questionnaire Likely Voter Screen

Three questions were asked of all respondents to determine who of all respondents are most likely to vote. To that end, we asked if the respondents were registered to vote or planned to register, their chances of voting, and how interested they are in the election.

Respondents who indicated they are almost certain to vote, and either that they are registered to vote or planned to register, or have a great deal of interest in the election, were designated as likely voters for purposes of analysis. This subgroup represents 462 respondents in the weighted sample, or 74% of the total sample. The difference between all respondents and likely voters is particularly interesting in the horse race question for the governor's race.

The complete questionnaire is located after the substantive tables in this document.

Sample Disposition Table

4,986	Total Numbers Dialed
628	Completed Interviews
1	Partial
	Non-Contacts
279	Refusals and Never Calls
931	Callbacks
42	Hearing or Language Barrier
733	Answering Machine
17	Ill, Sick, or Hospital
2002	Total Non-Contacts
	Unknown Eligibility
735	No Answer
117	Busy
852	Total Unknown Eligibility
767	90% Assumed Eligible
	Not Eligible
292	Business or Government
157	Computer or Fax
910	Not Working
144	Screenouts
1503	Total Not Eligible

18.5%

AAPOR Response Rate #3

V. DEMOGRAPHIC VARIABLES

(weighted, all respondents)

Political Party Affiliation

	Frequency	Percent	Valid Percent	Cumulative Percent
Democrat	180	29	29	29
Republican	138	22	22	51
Libertarian	12	2	2	53
Green	6	1	1	54
MN Independence Party	21	3	3	57
Tea party (volunteered)	4	1	1	58
Other party (volunteered)	1	0	0	58
Independent - no party	245	39	39	97
Not Political	7	1	1	98
Don't Know	9	1	2	100
Total	623	99	100	

If Independent, closer to what party?

	Frequency	Percent	Valid Percent	Cumulative Percent
Democrat	77	12	32	32
Republican	75	12	31	62
Libertarian	7	1	3	65
Green	2	0	1	66
MN Independence Party	24	4	10	76
Not close to any party (volunteered)	47	7	19	95
Don't Know	12	2	5	100
Total	244	39	100	

Ideology

	Frequency	Percent	Valid Percent	Cumulative Percent
Very liberal	64	10	10	10
Somewhat liberal	118	19	19	29
Moderate	177	28	29	58
Somewhat conservative	164	26	27	85
Very conservative	79	13	13	97
Don't know	16	2	3	100
Total	618	98	100	

Gender

	Frequency	Percent	Valid Percent	Cumulative Percent
Male	306	49	49	49
Female	322	51	51	100
Total	628	100	100	

Age

	Frequency	Percent	Valid Percent	Cumulative Percent
18 to 24	83	13	13	13
25 to 34	110	18	18	31
35 to 44	118	19	19	50
45 to 54	125	20	20	70
55 to 64	88	14	14	84
65 and over	101	16	16	100
Total	625	99	100	

Born in the U.S.

	Frequency	Percent	Valid Percent	Cumulative Percent
Yes	580	92	92	92
No	47	7	8	100
Total	627	100	100	

Educational Attainment

	Frequency	Percent	Valid Percent	Cumulative Percent
Less than 12	25	4	4	4
12 years	128	20	21	25
Post high (no college)	56	9	9	34
13-15 (some college)	162	26	26	60
College graduate	160	25	26	86
Some graduate school	34	5	6	91
Completed graduate school	53	8	9	100
Don't know	1	0	0	100
Total	620	99	100	

Religious Denomination

	Frequency	Percent	Valid Percent	Cumulative Percent
Catholic	157	25	27	27
Baptist	28	5	5	31
Lutheran	171	27	29	60
Presbyterian	16	2	3	63
Methodist	10	2	2	65
Episcopalian	7	1	1	66
Other Christian	73	12	12	78
Jewish	3	0	0	79
Muslim	1	0	0	79
Other (Buddhist, Hindu, etc.)	29	5	5	84
None (Atheist, Agnostic)	80	13	14	97
Don't know	17	3	3	100
Total	591	94	100	

Importance of Religion

	Frequency	Percent	Valid Percent	Cumulative Percent
Very Important	294	47	55	55
Somewhat Important	177	28	33	88
Not too Important	43	7	8	97
Not at all Important	16	3	3	100
Don't know	2	0	0	100
Total	533	85	100	

Combined Household Income Before Taxes

	Frequency	Percent	Valid Percent	Cumulative Percent
Under \$15,000	36	6	6	6
\$15,000 to \$25,000	56	9	10	16
\$25,000 to \$35,000	45	7	8	24
\$35,000 to \$50,000	75	12	13	38
\$50,000 to \$75,000	137	22	25	63
\$75,000 to \$100,000	70	11	13	75
\$100,000 or more	109	17	19	95
Don't know	30	5	5	100
Total	557	89	100	

Area Code

	Frequency	Percent	Valid Percent	Cumulative Percent
218	70	11	11	11
320	89	14	14	25
507	104	17	17	42
612	78	12	12	54
651	114	18	18	72
763	91	15	15	87
952	82	13	13	100
Total	628	100	100	

QUESTIONNAIRE

Note: Two forms of the questionnaire were developed, one for landlines and one for wireless phones. The following combines both versions.

=====

Question CHECKQ

IF INTERVIEW IS A RESTART MAKE SURE YOU HAVE PROPER RESPONDENT,
REINTRODUCE YOURSELF AND SAY SOMETHING LIKE--

We previously started this interview and couldn't finish it
at the time. May we finish it now?

IF RESPONDENT WANTS TO KNOW WHO THE INTERVIEW IS FOR YOU CAN
TELL THEM IT IS FOR ST. CLOUD STATE UNIVERSITY.

YOU CAN HIT CONTROL/END AT ANY TIME TO TERMINATE
AN INTERVIEW, PUT MESSAGE FOR CALLBACKS, INCOMPLETES,
REFUSALS, ETC.

Logic Instructions (flow only):

Question LOADDATA

IF INTERVIEW IS A RESTART MAKE SURE YOU HAVE PROPER RESPONDENT,
REINTRODUCE YOURSELF AND SAY SOMETHING LIKE--

FALL 10-6

We previously started this interview and couldn't finish it
at the time. May we finish it now?

IF RESPONDENT WANTS TO KNOW WHO THE INTERVIEW IS FOR YOU CAN
TELL THEM IT IS FOR ST. CLOUD STATE UNIVERSITY.
YOU CAN HIT CONTROL/END AT ANY TIME TO TERMINATE
AN INTERVIEW, PUT MESSAGE FOR CALLBACKS, INCOMPLETES,
REFUSALS, ETC.

Logic Instructions (flow only):

IF (TYPE = "WIRELESS") SKIPTO HELLO2

Question HELLO1

Hello, my name is _____ (YOUR NAME) 10-6 FINAL
at St. Cloud State University. I am calling from our survey research
center in St. Cloud. We are conducting a study of Minnesota residents
about their views on next month's governors election, our election
process, immigration and other issues in the news. We are not asking
for contributions or trying to sell you anything. Your telephone
number was drawn by a computer in a random sample of the state.

Is this your residential phone, that is a landline phone?

[IF NO] Is this your personal cell phone, not a business phone?

[IF NOT PERSONAL CELL PHONE, TERMINATE WITH, E.G.:]

I'm sorry I have the wrong place. [END CALL WITH CTRL-END]

1. YES, IT IS A RESIDENTIAL LANDLINE PHONE

2. NO, IT IS A PERSONAL CELL PHONE

Logic Instructions (flow only):

IF (TYPEPHON = 2) SKIPTO HELLO2B

Question GENDER

It is important that we interview a man in some households and a woman
in others so that the results will truly represent all the people in
the state. According to the method used by our university, I need to
interview the _____.
May I speak with that person?

[ROTATE WITH EVERY INTERVIEW-KEEP TRACK ON SHEET BY YOUR COMPUTER]

[IF DESIGNATED SEX DOESN'T LIVE IN HOUSEHOLD

ASK FOR OPPOSITE SEX - 18 YEARS OF AGE OR OLDER]

1. oldest male 18 years of age or older who lives in your household
2. youngest male 18 years of age or older who lives in your household
3. oldest female 18 years of age or older who lives in your household
4. youngest female 18 years of age or older who lives in your household

Logic Instructions (flow only):
QAL THANKYOU

Question ETHICS

[IF YES-START INTERVIEW][OR-WHEN SELECTED PERSON ANSWERS
REPEAT INTRODUCTION BUT NOT FIRST SCREEN]

Before starting the roughly ten minute survey, I want to mention that I would be happy to answer any questions about the study either now or later. Also, this interview is completely voluntary. If we should come to any question which you don't want to answer, just let me know and we'll go on to the next question. [PRESS ANY KEY TO CONTINUE]

[IF NO]

When may I call back to reach him/her?

So that I will know who to ask for, what is his/her first name?

[REPEAT BACK TO BE SURE YOU HAVE IT AND SHOW PRONUNCIATION
IF IT IS NEEDED. IF RESPONDENT OBJECTS TO PROVIDING NAME]

We only need the person's first name; the last name isn't necessary.

[NAME]_____

[TIME AND DAY FOR CALL-BACK]

Logic Instructions (flow only):

SKIPTO Q1DIRMN

Question HELLO2

[IF YES-START INTERVIEW][OR-WHEN SELECTED PERSON ANSWERS
REPEAT INTRODUCTION BUT NOT FIRST SCREEN]

Before starting the roughly ten minute survey, I want to mention that I would be happy to answer any questions about the study either now or later. Also, this interview is completely voluntary. If we should come to any question which you don't want to answer, just let me know and we'll go on to the next question. [PRESS ANY KEY TO CONTINUE]

[IF NO]

When may I call back to reach him/her?

So that I will know who to ask for, what is his/her first name?

[REPEAT BACK TO BE SURE YOU HAVE IT AND SHOW PRONUNCIATION
IF IT IS NEEDED. IF RESPONDENT OBJECTS TO PROVIDING NAME]

We only need the person's first name; the last name isn't necessary.

[NAME]_____

[TIME AND DAY FOR CALL-BACK]

Question HELLO20

Hello, my name is _____ (YOUR NAME) 10-6 FINAL
at St. Cloud State University. I am calling from our survey research
center in St. Cloud. We are conducting a study of Minnesota residents
about their views on next month's governors election, our election
process, immigration and other issues in the news. We are not asking
for contributions or trying to sell you anything. Your telephone
number was drawn by a computer in a random sample of the state.

[PRESS ANY KEY TO CONTINUE]

Logic Instructions (flow only):

ENDRAQ

Question HELLO25

Hello, my name is _____ (YOUR NAME) 10-6 FINAL
at St. Cloud State University. I am calling from our survey research
center in St. Cloud. We are conducting a study of Minnesota residents
about their views on next month's governors election, our election
process, immigration and other issues in the news. We are not asking
for contributions or trying to sell you anything. Your telephone
number was drawn by a computer in a random sample of the state.
A cash incentive of five dollars is offered to you at the end if
you complete the survey.

[PRESS ANY KEY TO CONTINUE]

Logic Instructions (flow only):

ENDRAQ

Question HELLO2A

Is this a personal cell phone, that is not a business phone?

[IF NOT A PERSONAL CELL PHONE] Is this a residential landline phone?

[IF BUSINESS PHONE, TERMINATE WITH, E.G.;]

I'm sorry I have a wrong number. [END CALL WITH CTRL-END]

For the purposes of this survey, I need to ask if you are male or female?

1. MALE, PERSONAL CELL PHONE
2. FEMALE, PERSONAL CELL PHONE
3. MALE, RESIDENTIAL LANDLINE PHONE
4. FEMALE, RESIDENTIAL LANDLINE PHONE

Logic Instructions (flow only):

IF (TYPEPHON=1) QAL THANKYOU

IF (TYPEPHON=1) SKIPTO Q1DIRMN

IF (TYPEPHON=2) SKIPTO HELLO2C

Question HELLO2B

Is this a personal cell phone, that is not a business phone?

[IF NOT A PERSONAL CELL PHONE] Is this a residential landline phone?

[IF BUSINESS PHONE, TERMINATE WITH, E.G.;]

I'm sorry I have a wrong number. [END CALL WITH CTRL-END]

For the purposes of this survey, I need to ask if you are male or female?

1. MALE, PERSONAL CELL PHONE
2. FEMALE, PERSONAL CELL PHONE
3. MALE, RESIDENTIAL LANDLINE PHONE
4. FEMALE, RESIDENTIAL LANDLINE PHONE

Logic Instructions (flow only):

Question HELLO2B0

For the purposes of this survey, I need to ask if you are male or female?

1. MALE
2. FEMALE

Question HELLO2B5

A cash incentive of five dollars is offered to you at the end if you complete the survey.

For the purposes of this survey, I need to ask if you are male or female?

1. MALE
2. FEMALE

Question HELLO2C

Are you age 18 or older and a resident of Minnesota?

[IF TOO YOUNG OR NOT A RESIDENT, TERMINATE WITH, E.G.;]
I'm sorry I have a wrong number. [END CALL WITH CTRL-END]

[PRESS ANY KEY TO CONTINUE]

Logic Instructions (flow only):

QAL THANKYOU

IF (TYPEPHON=2) SKIPTO DRIVING

Question ETHICS1

[IF YES-START INTERVIEW][OR-WHEN SELECTED PERSON ANSWERS
REPEAT INTRODUCTION BUT NOT FIRST SCREEN]

Before starting the roughly ten minute survey, I want to mention that I would be happy to answer any questions about the study either now or later. Also, this interview is completely voluntary. If we should come to any question which you don't want to answer, just let me know and we'll go on to the next question. [PRESS ANY KEY TO CONTINUE]

[IF NO]

When may I call back to reach him/her?

So that I will know who to ask for, what is his/her first name?

[REPEAT BACK TO BE SURE YOU HAVE IT AND SHOW PRONUNCIATION
IF IT IS NEEDED. IF RESPONDENT OBJECTS TO PROVIDING NAME]

We only need the person's first name; the last name isn't necessary.

[NAME]_____

[TIME AND DAY FOR CALL-BACK]

Question DRIVING

It is important that we interview you when you are not driving or in a situation where you would be distracted by events around you. Are you in a safe situation to answer our questions?

[IF YES-START INTERVIEW]

Before starting the roughly ten minute survey, I want to mention that I would be happy to answer any questions about the study either now or later. Also, this interview is completely voluntary. If we should come to any question which you don't want to answer, just let me know and we'll go on to the next question. [PRESS ANY KEY TO CONTINUE]

[IF NO]

When may I call back to reach you at a better time?

So that I will know who to ask for, what is your first name?

[REPEAT BACK TO BE SURE YOU HAVE IT AND SHOW PRONUNCIATION IF IT IS NEEDED. IF RESPONDENT OBJECTS TO PROVIDING NAME]

We only need your first name; the last name isn't necessary.

[NAME]_____

[TIME AND DAY FOR CALL-BACK]

Question Q1DIRMN

Let's begin by asking a general question about Minnesota.
Do you think things in the state are generally going in the right direction, or do you feel things have gotten off on the wrong track?

1. RIGHT DIRECTION
2. NEUTRAL-[VOLUNTEERED]

- 3. WRONG TRACK
- 8. DON'T KNOW
- 9. REFUSED

Question Q2PROBMN

What do you think is the single most important problem facing the State of Minnesota today?

[DO NOT READ LIST. PROBE FOR ONE SPECIFIC RESPONSE]

- | | |
|----------------------------------|---------------------------------------|
| 01. ABORTION | 17. IMMIGRATION |
| 02. AGRICULTURE-GENERAL | 18. NATURAL DISASTERS |
| 03. BRIDGES/ROADS | 19. POLITICS/POLITICIANS/GOV/LEGIS. |
| 04. BUDGET/DEFICIT | 20. POVERTY/ POOR |
| 05. CORPORATE LEADERSHIP | 21. RELIGIOUS/MORAL ISSUES |
| 06. CRIMES/GANGS/VIOLENCE | 22. SENIOR ISSUES/ELDERLY |
| 07. DRUGS USE | 23. SPORTS ISSUES/STADIUMS |
| 08. ECONOMY | 24. STATE SERVICE CUTS |
| 09. EDUCATION (FUNDING/QUALITY) | 25. TAXES |
| 10. ENVIRONMENT/GLOBAL WARMING | 26. TERRORISM/NATIONAL SECURITY |
| 11. FAMILY ISSUES | 27. UNEMPLOYMENT/NO JOB OPPORTUNITIES |
| 12. FINANCIAL/MORTGAGE CRISIS | 28. WELFARE ISSUES |
| 13. GAMBLING | 29. OTHER |
| 14. GAS PRICES/ENERGY | 30. NO PROBLEM FACING STATE |
| 15. HEALTH CARE/INSUR/PRES DRUGS | 31. DON'T KNOW |
| 16. HOUSING (AFFORD/FORECLOSURE) | 3. 2. REFUSED |

Logic Instructions (flow only):

IF (ANS>28) SKIPTO Q4PAWLEN

Question Q3PARPRO

In Minnesota, which political party, if any, do you think can do a better job of handling the problem you have just mentioned - the Republicans, the Democrats, the Independence Party, the Libertarian Party, or the Green Party?

[INDEPENDENCE PARTY IS DIFFERENT FROM
THOSE WHO SAY THEY ARE AN INDEPENDENT WHICH IS NO PARTY]

1. REPUBLICAN
2. DEMOCRATIC
3. INDEPENDENCE PARTY
4. LIBERTARIAN PARTY
5. GREEN PARTY
6. PARTIES ALL THE SAME/NO DIFFERENCE-[VOLUNTEERED]
7. TEA PARTY-VOLUNTEERED
8. NONE-volunteered
9. DON'T KNOW
- 10.REFUSED

Question Q4PAWLEN

Now, here are some different questions. How would you rate the overall performance of Tim Pawlenty as Governor? Would you rate his performance as excellent, pretty good, only fair or poor?

1. EXCELLENT
2. PRETTY GOOD
3. ONLY FAIR
4. POOR
8. DON'T KNOW
9. REFUSED

Question Q5OBAMA

How would you rate the overall performance of Barack Obama as President? Would you rate his performance as excellent, pretty good, only fair or poor?

1. EXCELLENT
2. PRETTY GOOD
3. ONLY FAIR
4. POOR
8. DON'T KNOW
9. REFUSED

Question Q62012EL

If the 2012 presidential election was held today with Barack Obama being the Democratic Candidate and Tim Pawlenty being the Republican Candidate, would you vote for Obama or Pawlenty?

1. OBAMA
2. PAWLENTY
3. SOMEONE ELSE [VOLUNTEERED]
8. DON'T KNOW
9. REFUSED

Question GOV1A

Ok, our next several questions relate to next month's Minnesota governor election.

If the election for Governor of Minnesota was being held today, would you vote for Mark Dayton-the Democrat candidate, Tom Emmer-the Republican candidate, Tom Horner-the Independence Party candidate, or a candidate of another party?

1. DAYTON
2. EMMER
3. HORNER
4. OTHER CANDIDATE
5. NOT SURE
6. WON'T VOTE
9. REFUSED

Logic Instructions (flow only):

IF (ANS = 1) SKIPTO GOV2D
 IF (ANS = 2) SKIPTO GOV2E
 IF (ANS = 3) SKIPTO GOV2H
 IF (ANS = 4) SKIPTO GOV2O
 IF (ANS = 5) SKIPTO GOV2UN
 IF (ANS > 5) SKIPTO RCV1A
 ENDRAQ

Question GOV1B

Ok, our next several questions relate to next month's Minnesota governor election.

If the election for Governor of Minnesota was being held today, would you vote for Tom Emmer-the Republican candidate, Tom Horner-the Independence Party candidate, Mark Dayton-the Democrat candidate, or a candidate of another party?

1. DAYTON
2. EMMER
3. HORNER
4. OTHER CANDIDATE
5. NOT SURE
6. WON'T VOTE
9. REFUSED

Logic Instructions (flow only):

IF (ANS = 1) SKIPTO GOV2D
IF (ANS = 2) SKIPTO GOV2E
IF (ANS = 3) SKIPTO GOV2H
IF (ANS = 4) SKIPTO GOV2O
IF (ANS = 5) SKIPTO GOV2UN
IF (ANS > 5) SKIPTO RCV1A
ENDRAQ

Question GOV1C

Ok, our next several questions relate to next month's Minnesota governor election.

If the election for Governor of Minnesota was being held today, would you vote for Tom Horner-the Independence Party candidate, Mark Dayton-the Democrat candidate, Tom Emmer-the Republican candidate, or a candidate of another party?

1. DAYTON
2. EMMER
3. HORNER
4. OTHER CANDIDATE

- 5. NOT SURE
- 6. WON'T VOTE
- 9. REFUSED

Logic Instructions (flow only):

IF (ANS = 1) SKIPTO GOV2D
IF (ANS = 2) SKIPTO GOV2E
IF (ANS = 3) SKIPTO GOV2H
IF (ANS = 4) SKIPTO GOV2O
IF (ANS = 5) SKIPTO GOV2UN
IF (ANS > 5) SKIPTO RCV1A
ENDRAQ

Question GOV2D

Would you say you are definitely voting for Dayton or just leaning toward voting for him?

1. Definite
2. Leaning

Logic Instructions (flow only):
SKIPTO WHYGV

Question GOV2E

Would you say you are definitely voting for Emmer or just leaning toward voting for him?

1. Definite
2. Leaning

Logic Instructions (flow only):
SKIPTO WHYGV

Question GOV2H

Would you say you are definitely voting for Horner or just leaning toward voting for him?

1. Definite
2. Leaning

Logic Instructions (flow only):
SKIPTO WHYGV

Question GOV2O

Would you say you are definitely voting for another candidate or just leaning toward voting for him?

1. Definite
2. Leaning

Instructions (flow only):
SKIPTO WHYGV

Question GOV2UN

[IF NOT SURE]

Although you are not sure, would you say you lean more toward Dayton, Emmer, Horner or a candidate or another party?

1. LEANING DAYTON
2. LEANING EMMER
3. LEANING HORNER
4. LEANING OTHER CANDIDATE
6. WON'T VOTE
8. DON'T KNOW
9. REFUSED

Logic Instructions (flow only):
IF (ANS > 5) SKIPTO RCV1A

Question WHYGV

Why are you going to vote for this person?

[PROBE-DO NOT READ- SELECT ALL THAT APPLY - MULTIPLE RESPONSES]

- | | |
|-----------------------------------|-----------------------------|
| 10. ABORTION POSITION | 24. NO PARTICULAR REASON |
| 11. BACKGROUND-PROF/PERSONAL | 25. NOT A TYPICAL CANDIDATE |
| 12. BUDGET POSITION | 26. SAME POLITICAL IDEOLOGY |
| 13. CHARACTER/LIKE THEM AS PERSON | 27. SAME POLITICAL PARTY |
| 14. CRIME POSITION | 28. SENIOR ISSUE POSITION |
| 15. DON'T LIKE OPPOSITION | 29. SOMEBODY DIFFERENT |
| 16. ECONOMIC PLAN | 30. TAXES |
| 17. EDUCATION/SCHOOL | 31. TERRORISM POSITION |
| 18. ENVIRONMENT POSITION. | 32. TIME FOR A CHANGE |
| 19. GOOD TRACK RECORD-EXPERIENCE | 33. VIKING STADIUM POSITION |
| 20. GUN/ HUNTING POSITION | 34. OTHER |
| 21. HEALTH CARE POSITION | 35. DON'T KNOW |
| 22. IMMIGRATION POSITION | 36. REFUSED |
| 23. INTEGRITY/SCRUPLES | 37. NO OTHER RESPONSE |

Question RCV1A

Thanks - next we have a few questions about ranked choice voting but first I will read an explanation about this type of voting.

One way to ensure candidates win with the support of a majority of voters is with Ranked Choice Voting (or sometimes called Instant Runoff Voting). This type of voting allows you to cast your ballot for one candidate or to rank your choices from top to bottom. If a candidate receives a majority of first-choice votes, that candidate wins. However, if no candidate wins a majority, the candidate with the least votes is eliminated, and those votes are divided among the other candidates based on those voters' second choice. If there's still no majority winner, the process repeats until a candidate reaches a majority.

[PRESS ANY KEY TO CONTINUE]

[IF RESPONDENT TELLS YOU THEY KNOW ABOUT RANKED CHOICE VOTING, GO TO NEXT SCREEN AND READ THE FINAL LINE IN THE QUESTION: IF WE HAD RANKED CHOICE VOTING, WHO WOULD BE YOUR FIRST CHOICE.]

Question RCV1B

This allows you to vote for your first choice candidate, but if she loses in the first round, your vote still counts in the next rounds until a candidate obtains the majority of the votes cast.

If we had ranked choice voting, who would be your first choice for governor? Is it

1. Mark Dayton
2. Tom Emmer
3. Tom Horner or
4. Some other candidate
8. DON'T KNOW ENOUGH TO ANSWER
9. REFUSED

Logic Instructions (flow only):

IF (ANS=2) SKIPTO RCV2B

IF (ANS=3) SKIPTO RCV2C

IF (ANS=4) SKIPTO RCV2D

IF (ANS=8) SKIPTO RCV3

IF (ANS=9) SKIPTO RCV3

Question RCV2A

If Mark Dayton is your first choice, who would be your second choice if you have a second choice? Is it

- 1.
2. Tom Emmer
3. Tom Horner
4. Some other candidate or
5. Don't you have a second choice
8. DON'T KNOW
9. REFUSED

Logic Instructions (flow only):

SKIPTO RCV3

Question RCV2B

If Tom Emmer is your first choice, who would be your second choice if you have a second choice? Is it

1. Mark Dayton
- 2.
3. Tom Horner
4. Some other candidate or
5. Don't you have a second choice
8. DON'T KNOW
9. REFUSED

Logic Instructions (flow only):
SKIPTO RCV3

Question RCV2C

If Tom Horner is your first choice, who would be your second choice if you have a second choice? Is it

1. Mark Dayton
2. Tom Emmer
- 3.
4. Some other candidate or
5. Don't you have a second choice
8. DON'T KNOW
9. REFUSED

Logic Instructions (flow only):
SKIPTO RCV3

Question RCV2D

If a candidate other than Dayton, Emmer or Horner is your first choice, who would be your second choice if you have a second choice? Is it

1. Mark Dayton
2. Tom Emmer
3. Tom Horner
4. Some other candidate or
5. Don't you have a second choice
8. DON'T KNOW
9. REFUSED

Question RCV3

Before today, have you heard of ranked choice voting?

1. YES
5. NO
8. DON'T KNOW
9. REFUSED

Logic Instructions (flow only):

IF (ANS=5) SKIPTO RCV5

IF (ANS=8) SKIPTO RCV5

IF (ANS=9) SKIPTO RCV5

Question RCV4

Would you say you are very familiar, somewhat familiar, not familiar or not at all familiar with this system of voting?

1. VERY FAMILIAR
2. SOMEWHAT FAMILIAR
3. NOT FAMILIAR
4. NOT AT ALL FAMILIAR
8. DON'T KNOW
9. REFUSED

Question RCV5

Would you like to vote using ranked choice?

1. YES
5. NO
8. DON'T KNOW
9. REFUSED

Question IMMIG1

Now I have several questions about immigration.

For you personally, do you strongly agree, agree, disagree, or strongly disagree with the following statement -
Immigrants make a positive contribution to the United States.

1. STRONGLY AGREE
2. AGREE
3. DISAGREE
4. STRONGLY DISAGREE
8. DON'T KNOW
9. REFUSED

Logic Instructions (flow only):

IF (ANS = 3) SKIPTO IMM2B
IF (ANS = 4) SKIPTO IMM2B
IF (ANS > 7) SKIPTO IMMIG3

Question IMM2A

For you personally, what are the benefits of allowing
immigrants into the United States?

[READ CHOICES 1-7; ACCEPT MULTIPLE RESPONSES]

1. They provide cultural diversity
2. They take jobs that Americans don't want

3. They are low cost labor
4. They are hard working people
5. They strengthen our economy
6. The history of this country is based on immigration
7. They add to the American melting pot
8. OTHER [VOLUNTEERED]
9. NO BENEFIT [VOLUNTEERED]
10. DON'T KNOW
11. REFUSED
12. NO OTHER RESPONSE

Logic Instructions (flow only):
SKIPTO IMMIG3

Question IMM2B

For you personally, what are the negative consequences from allowing immigrants into the United States?

[READ CHOICES 1-9; ACCEPT MULTIPLE RESPONSES]

1. They lower America's wage scale
2. They take jobs away from Americans
3. They lead to an increase in crime
4. They are a burden on government welfare
5. They decrease the white majority
6. They don't speak English
7. They don't pay taxes
8. They threaten our national security
9. They crowd our schools
10. OTHER [VOLUNTEERED]
11. NO NEGATIVE CONSEQUENCE [VOLUNTEERED]
12. DON'T KNOW
13. REFUSED
14. NO OTHER RESPONSE

Question IMMIG3

If the state of Minnesota passed a law dealing with illegal immigrants, would you approve or disapprove of allowing police to question anyone who they think may be in the country illegally?

1. APPROVE
5. DISAPPROVE
8. DON'T KNOW
9. REFUSED

Question IMMIG4

Would you approve or disapprove of requiring people to produce documents verifying their citizenship or legal status to be in the country if police ask for them?

- 1. APPROVE
- 5. DISAPPROVE
- 8. DON'T KNOW
- 9. REFUSED

Question IMMIG5

Would you approve or disapprove of allowing police to detain anyone who cannot verify their citizenship or legal status to be in the country?

- 1. APPROVE
- 5. DISAPPROVE
- 8. DON'T KNOW
- 9. REFUSED

Question THER1

Thank you. Here is a different kind of question.

Please think of a thermometer that has a range of 0 to 100 degrees. I'd like you to rate your feelings toward some of our political leaders and other people who are in the news. Ratings on the thermometer between 50 and 100 degrees mean that you feel favorable and warm toward the person. Ratings between 0 and 50 mean that you do not feel too favorable toward the person. If we come to a person whose name you don't recognize, you don't need to rate that person. Just tell me and we will move on to the next one. If you do recognize the name, but do not feel particularly warm or cold toward the person, you would rate the person at the 50-degree mark.

[NEVER TELL WHO THE PERSON IS OR WHAT THEY DO-YOU CAN REREAD THE NAME]

Barack Obama

RATING

DON'T KNOW	DON'T KNOW WHO	REFUSED
ENOUGH TO JUDGE	THE PERSON IS	

101

102

103

Question THER2

Sarah Palin

RATING

DON'T KNOW

DON'T KNOW WHO

REFUSED

ENOUGH TO JUDGE

THE PERSON IS

101

102

103

Question THER3

Tim Pawlenty

RATING

DON'T KNOW

DON'T KNOW WHO

REFUSED

ENOUGH TO JUDGE

THE PERSON IS

101

102

103

Question THER4

Tom Emmer

RATING

DON'T KNOW

DON'T KNOW WHO

REFUSED

ENOUGH TO JUDGE

THE PERSON IS

101

102

103

Question THER5

Mark Dayton

RATING

DON'T KNOW ENOUGH TO JUDGE 101	DON'T KNOW WHO THE PERSON IS 102	REFUSED 103
--------------------------------------	--	----------------

Question THER6

Tom Horner

RATING

DON'T KNOW ENOUGH TO JUDGE 101	DON'T KNOW WHO THE PERSON IS 102	REFUSED 103
--------------------------------------	--	----------------

Question PARTY1

Do you usually consider yourself to be a Democrat, Republican, Libertarian party member, Green party member, Minnesota Independence party member, another party, or are you an independent who is not a member of any party?

1. DEMOCRAT
2. REPUBLICAN
3. LIBERTARIAN
4. GREEN
5. MN INDEPENDENCE PARTY
6. TEA PARTY [VOLUNTEERED]
7. OTHER PARTY [VOLUNTEERED]
8. INDEPENDENT, NOT A MEMBER OF ANY PARTY
9. NOT POLITICAL
10. DON'T KNOW
11. REFUSED

IF (ANSWER < 8) SKIPTO REGVOTE

IF (ANSWER > 8) SKIPTO REGVOTE

Question PARTY2

Although you are an independent, do you usually consider yourself to be closer to the Democrats, Republicans, the Libertarian Party, the Green Party, or the Minnesota Independence Party?

1. DEMOCRAT
2. REPUBLICAN
3. LIBERTARIAN
4. GREEN
5. MN INDEPENDENCE PARTY
6. TEA PARTY [VOLUNTEERED]
7. NOT CLOSE TO ANY PARTY [VOLUNTEERED]
8. DON'T KNOW
9. REFUSED

Question REGVOTE

Are you presently registered to vote or do you plan to register to vote in the area in which you are now living?

1. YES
5. NO
8. DON'T KNOW
9. REFUSED

Question VOTE10

Next month there will be elections for Minnesota Governor, members of the U.S. House of Representatives, and both houses of the Minnesota legislature. What are the chances of your voting in the election-are you almost certain to vote, will you probably vote, are the chances 50-50, or don't you think you will vote?

1. ALMOST CERTAIN
2. PROBABLY VOTE
3. 50-50
4. WON'T VOTE
8. DON'T KNOW
9. REFUSED

Question INTER10

Generally speaking, how much interest would you say you have in the November general election, a great deal, a fair amount, only a little, or no interest at all?

1. GREAT DEAL
2. FAIR AMOUNT
3. ONLY A LITTLE
4. NO INTEREST AT ALL
8. DON'T KNOW
9. REFUSED

Question AGE

Thank you. The following questions are primarily for statistical analysis and to help us determine if we are getting a random sample. You don't have to answer all the questions but it will help us if you do.

What age group are you a member of? Are you...

[READ CATEGORIES-AS NECESSARY]

1. 18-24
2. 25-34
3. 35-44
4. 45-54
5. 55-64
6. 65+
8. DON'T KNOW
9. REFUSED

Question NATIVE

Were you born in the United States?

1. YES
5. NO
8. DON'T KNOW
9. REFUSED

Logic Instructions (flow only):
IF (TYPEPHON = 1) SKIPTO CELLOWN

Question LLOWN

Do you also have a landline phone that is used at your residence?

[IF YES] Which phone, cell or landline, do you use for most personal calls, or do you use them both frequently?

1. YES, AND MOSTLY USE CELL
2. YES, AND MOSTLY USE LANDLINE
3. YES, AND USE BOTH CELL AND LANDLINE FREQUENTLY
4. NO, DON'T HAVE LANDLINE PHONE
8. DON'T KNOW
9. REFUSED

Logic Instructions (flow only):

SKIPTO EDUC

Question CELLOWN

Do you own a cell phone that you personally use?

[IF YES] Which phone, cell or landline, do you use for most personal calls, or do you use them both frequently?

1. YES, AND MOSTLY USE CELL
2. YES, AND MOSTLY USE LANDLINE
3. YES, AND USE BOTH CELL AND LANDLINE FREQUENTLY
5. NO, DON'T OWN CELL
8. DON'T KNOW
9. REFUSED

Question EDUC

What was the last grade or year in school you completed?

[DO NOT READ CATEGORIES]

1. LESS THAN 12
2. 12 YEARS
3. POST HIGH-NO COLL-[example Tech College/Beauty School]
4. 13-15 (SOME COLLEGE)
5. 16-COLLEGE GRAD
6. SOME GRAD EDUCATION
7. COMPLETED GRAD PROG
8. DON'T KNOW
9. REFUSED

Question RELIG1

What...if any...is your religious preference?

[IF DON'T KNOW/NO RESPONSE]--

Well are you closer to being Catholic, Lutheran, Baptist, Presbyterian or something else?

1. CATHOLIC
2. BAPTIST
3. LUTHERAN
4. PRESBYTERIAN
5. METHODIST
6. EPISCOPALIAN
7. OTHER CHRISTIAN (MORMON, JEHOVAHS WITNESS, ETC.)
8. JEWISH
9. MUSLIM
10. OTHER (BUDDHIST, HINDU, BAHAI, ETC.)
11. NONE/ATHEIST/AGNOSTIC
12. DON'T KNOW
13. REFUSED

Logic Instructions (flow only):

IF (ANSWER = 11) SKIPTO IDEOL

Question RELIG2

How important is religion in your life? Very important, somewhat important, not too important, or not at all important?

1. VERY IMPORTANT
2. SOMEWHAT IMPORTANT
3. NOT TOO IMPORTANT
4. NOT AT ALL IMPORTANT
8. DON'T KNOW
9. REFUSED

Question IDEOL

Thinking about your own general approach to politics, do you consider yourself to be very liberal, somewhat liberal, moderate, somewhat conservative, or very conservative?

1. VERY LIBERAL
2. SOMEWHAT LIBERAL
3. MODERATE
4. SOMEWHAT CONSERVATIVE
5. VERY CONSERVATIVE
8. DON'T KNOW
9. REFUSED

Question INCOME

Finally, would you please tell me the range which best represents the total yearly income, before taxes, of all immediate family living in your household? [READ LIST UNTIL STOPPED-IF NECESSARY]

1. under \$15,000
2. \$15,000 up to \$25,000
3. \$25,000 up to \$35,000
4. \$35,000 up to \$50,000
5. \$50,000 up to \$75,000
6. \$75,000 up to \$100,000
7. \$100,000 or more
8. DON'T KNOW
9. REFUSED

Question THANKS

Finally, would you please tell me the range which best represents the total yearly income, before taxes, of all immediate family living in your household? [READ LIST UNTIL STOPPED-IF NECESSARY]

1. under \$15,000
2. \$15,000 up to \$25,000
3. \$25,000 up to \$35,000
4. \$35,000 up to \$50,000
5. \$50,000 up to \$75,000
6. \$75,000 up to \$100,000
7. \$100,000 or more
8. DON'T KNOW
9. REFUSED

Logic Instructions (flow only):
IF (CASH=5) SKIPTO THANKS5

Question THANKS0

I would like to thank you very much for your time and cooperation.
You have been very helpful. If you would like to see the results
of this survey you may contact the SCSU Survey Lab at St. Cloud
State University. Would you like the number?
(IF YES IT IS 320-308-3980 or WEBSITE: www.stcloudstate.edu/scsusurvey).
Good-bye!

INTERVIEWER- BRING TO A DIRECTOR'S ATTENTION ANY PROBLEMS
WITH THE INTERVIEW, SUCH AS DIFFICULT QUESTIONS, CODING PROBLEMS, ETC.

Logic Instructions (flow only):

CTRLEND

Question THANKS5

I would like to thank you very much for your time and cooperation.
You have been very helpful. If you would like to see the results
of this survey you may contact the SCSU Survey Lab at St. Cloud
State University. Would you like the number?
(IF YES IT IS 320-308-3980 or WEBSITE: www.stcloudstate.edu/scsusurvey).

To receive your cash award of five dollars, please send an email with
your name and address and phone number to scsusurveysw@stcloudstate.edu.
Or you may also visit our website at www.stcloudstate.edu/scsusurvey
and contact any of the staff listed there. Please allow two weeks for
processing. Good-bye!

IF THEY REQUEST AN SCSU PHONE NUMBER, GIVE 320-308-3980 OR 320-308-2149.

INTERVIEWER- BRING TO A DIRECTOR'S ATTENTION ANY PROBLEMS
WITH THE INTERVIEW, SUCH AS DIFFICULT QUESTIONS, CODING PROBLEMS, ETC.

Logic Instructions (flow only):

CTRLENDQuestion THANKYOU

Thank you for your time

Logic Instructions (flow only):

CTRLEND



**FALL 2010 SUBSTANTIVE FINDINGS
ELECTION 2010
UPDATED 10-25-10**

As is the custom for the SCSU Survey, the bulk of our annual fall survey during an election year is devoted to that election. This year, we found.....

More than one-half (56%) of our respondents think the state is on the wrong track. This is about 15 percentage points higher than last year when four of ten respondents saw the state on the wrong track. This compares with about one-quarter of the respondents who view the state going in the right direction. Last year, nearly one-half of our respondents saw the state going in the right direction.

The top five problems facing the state according to our respondents are, from the top, the economy (22%), budget and budget deficit (16%), unemployment/job opportunities (13%), education funding and quality (12%), and taxes (7%). In 2009, the top five were: health care, budget, education, unemployment, taxes. In 2008, the top five were education, taxes, financial/mortgage crisis, unemployment, health care. In 2007, education, taxes, health care, roads, crime. In 2006, education, taxes, health care, crime, roads. In 2005, education, taxes, health care, budget, politics/politicians.

An examination of the top five problems this year and which political party can do a better job of fixing them, we found the respondents were more likely to see Republicans doing a better job tackling the budget and taxes but Democrats were seen to better tackle the economy, education and unemployment/jobs.

Governor Tim Pawlenty's performance score has dropped from last year. This year, four of ten (41%) respondents saw his performance as excellent and pretty good and almost six of ten (56%) see his performance as only fair or poor. Last year, his ratings were more equally split with about one-half seeing his performance as excellent and pretty good and the other half seeing his performance as only fair or poor.

Similar to Governor Pawlenty, President Obama's performance rating has dropped from last year. Last year, one-half of our respondents rated the President's performance as excellent or pretty good. This year, we found that slightly more than one-third (38%) of our respondents rated President Obama's performance as excellent and pretty good. And approximately two-thirds (61%) rated his performance as only fair or poor.

As expected, Democrats rated President Obama's performance better than did Republicans. The divide, however, is remarkable. Not one Republican rated President Obama's performance as excellent and only ten rated the President's performance as pretty good. Most Republicans (63% or 132) rated his performance as poor but 34% (71) gave him only fair rating. Democrats gave the President better ratings: 14% excellent, 54% pretty good, 25% only fair and 5% poor.

Since Governor Pawlenty still seems interested in seeking national office, we again paired the Governor with President Obama in a hypothetical race for the White House. This year, as last, President Obama wins. However, President Obama's support shrank by four percentage points from 49 to 45 percent whereas Governor Pawlenty's support

stayed the same at 40 percent. We included a „someone else“ category and this year we found responses nearly doubled compared to last year.

As a prelude to the gubernatorial horse race question, on a 0-100 feeling thermometer, we found President Obama running a 49 mean temperature compared to his 58 temperature last year. We again checked in on Governor Pawlenty and found his temperature this year a 46 whereas he had a 53 last year. Former Governor Palin’s temperature remained 38 as it was last year. Of the three leading Minnesota Governor candidates, Tom Horner did the best with a 50 mean but nearly one-quarter of the respondents either couldn’t judge or didn’t know who he is. Mark Dayton came in second with a 48 mean temperature and only seven percent of the respondent either couldn’t judge or didn’t know who he is. Tom Emmer was the lowest with a 45 mean temperature and approximately 16 percent of the respondent either couldn’t judge or didn’t know who he is.

From all respondents in the sample, in a straight-up match between Mark Dayton, Tom Emmer and Tom Horner, we found that **Mark Dayton gathered 37 percent of support of all respondents and 40 percent of likely voters. Tom Emmer came in second place with 27 percent of all respondents and 30 percent of likely voters. Tom Horner came in third with 18 percent of all respondents and 19 percent of likely voters. Importantly, 15 percent of all respondents and 5 percent of likely voters are still not sure of which, if any, candidate is their preference.**

In a follow up, we asked Dayton supporters if they were definite or leaning toward the candidate. We found that 60 percent were definite and 40 percent were leaning (for likely voters, 61% definite and 39% leaning) to vote for Mark Dayton. Similarly, regarding Emmer’s voters, 60 percent were definite and 40 percent leaning (for likely voters, 63% definite and 37% leaning). For Horner’s supporters, however, 28 percent are definite and 72 percent are leaning (for likely voters, 31% definite and 69% leaning).

In terms of who is supporting the candidates, we found that in almost every single demographic category Mark Dayton is leading Tom Emmer and Tom Horner. The only indicator that Dayton is not leading his opponents is party identification. Indeed, 8 of 10 Democrats are supporting Dayton, but only 7 of 10 Republicans are supporting Emmer and 23% of Republican identifiers are supporting Horner. Although most Independent Party identifiers support Horner, more than one-half are not and of those, more support Dayton than Emmer. This applies to all respondents and for likely voters. Specifically, Dayton is carrying other the Twin Cities metro area and outstate, he is leading among both men and women, he is ahead in every income category and that even included upper income strata, and in every age group except for likely voters he is behind Tom Emmer in the 45-54 age group.

Also as a follow up, we asked respondents why they are supporting the candidates. The top reasons are their budget views, don’t like the opposition, education position, ideology, party and tax position. For Dayton, the top three reasons are his education position, same ideology and tax stance. For Emmer, the top three reasons are his

budget stance, party and a tie for ideology and his tax position. For Horner, the top three reasons include a dislike for the opposition, tax position and a tie on his budget stance and ideology.

VI. SUBSTANTIVE VARIABLES AND COSSTABULATION ANALYSES (weighted; initial set of tables all respondents; final set on Gubernatorial races is likely voters)

Do you think things in the state are going in the right direction or have they gotten off on the wrong track?

	Frequency	Percent	Valid Percent	Cumulative Percent
Right Direction	163	26	26	26
Neutral	75	12	12	38
Wrong Track	350	56	56	94
Don't Know	37	6	6	100
Total	625	99	100	

Percent within Do you consider yourself a...

		State going in right direction?				
		Right Direction	Neutral	Wrong Track	Don't Know	Total
Do you consider yourself a...	Democrat	27%	11%	57%	5%	100%
	Republican	28%	13%	57%	2%	100%
	MN Independence Party	23%	5%	61%	11%	100%
	Other Party	19%	16%	45%	19%	100%
	Not Political	38%	13%	25%	25%	100%
Total		26%	12%	56%	6%	100%

What is the most important problem facing Minnesota?

Top 5 Reasons

	Frequency	Percent	Valid Percent	Cumulative Percent
Other	188	30	30	30
Economy	136	22	22	52
Budget/Deficit	101	16	16	68
Unemployment/No job opportunities	82	13	13	81
Education (Funding/Quality)	78	12	12	93
Taxes	44	7	7	100
Total	628	100	100	

Percent within Do you consider yourself a...

		What is the most important problem facing MN?				
		Budget/Deficit	Economy	Education (Funding/Quality)	Taxes	Unemployment/ No job opportunities
Do you consider yourself a...	Democrat	15%	18%	16%	4%	17%
	Republican	21%	20%	10%	9%	13%
	MN Independence Party	9%	36%	2%	7%	2%
	Other Party	15%	36%	21%	9%	
	Not Political	14%	43%	14%	14%	14%
Total		17%	22%	13%	7%	13%

Percent within Gender						
		What is the most important problem facing MN?				
		Budget/Deficit	Economy	Education (Funding/Quality)	Taxes	Unemployment/No job opportunities
Gender	Male	19%	22%	8%	6%	12%
	Female	13%	21%	16%	8%	14%
Total		16%	22%	12%	7%	13%

Percent within Geographic Region						
		What is the most important problem facing MN?				
		Budget/Deficit	Economy	Education (Funding/Quality)	Taxes	Unemployment/No job opportunities
Geographic Region	Seven County Metro	13%	23%	13%	8%	12%
	Greater Minnesota	20%	20%	12%	6%	14%
Total		16%	22%	12%	7%	13%

Which party can do a better problem of handling problem you mentioned?

		Frequency	Percent	Valid Percent	Cumulative Percent
Valid	Democratic	158	25	30	30
	Republican	150	24	28	58
	Don't Know	73	12	14	72
	None	64	10	12	84
	Independence Party	56	9	11	95
	Other Party	14	2	3	97
	Parties all the same	14	2	3	100
	Total	529	84	100	
Missing	System	100	16		
Total		628	100		

Overall performance of Pawlenty

	Frequency	Percent	Valid Percent	Cumulative Percent
Excellent	43	7	7	7
Pretty Good	216	34	34	41
Only Fair	179	28	28	70
Poor	168	27	27	96
Don't Know	22	4	4	100
Total	628	100	100	

Percent within Do you consider yourself a...

		Overall performance of Pawlenty					Total
		Excellent	Pretty Good	Only Fair	Poor	Don't Know	
Do you consider yourself a...	Democrat	2%	14%	33%	48%	3%	100%
	Republican	14%	58%	17%	7%	3%	100%
	MN Independence Party	7%	24%	38%	27%	4%	100%
	Other Party	6%	34%	31%	22%	6%	100%
	Not Political	17%	67%	17%	0%		100%
Total		8%	34%	27%	29%	3%	100%

Overall performance of Obama

	Frequency	Percent	Valid Percent	Cumulative Percent
Excellent	45	7	7	7
Pretty Good	193	31	31	38
Only Fair	182	29	29	67
Poor	200	32	32	99
Don't Know	9	1	1	100
Total	628	100	100	

Percent within Do you consider yourself a...

		Overall performance of Obama					
		Excellent	Pretty Good	Only Fair	Poor	Don't Know	Total
Do you consider yourself a...	Democrat	14%	54%	25%	5%	2%	100%
	Republican	0%	5%	33%	62%	0%	100%
	MN Independence Party	11%	18%	30%	41%		100%
	Other Party	6%	38%	13%	44%		100%
	Not Political	17%	33%	17%	33%		100%

Percent within Do you consider yourself a...

		Overall performance of Obama					Total
		Excellent	Pretty Good	Only Fair	Poor	Don't Know	
Do you consider yourself a...	Democrat	14%	54%	25%	5%	2%	100%
	Republican	0%	5%	33%	62%	0%	100%
	MN Independence Party	11%	18%	30%	41%		100%
	Other Party	6%	38%	13%	44%		100%
	Not Political	17%	33%	17%	33%		100%
Total		8%	31%	28%	32%	1%	100%

Presidential Election Match Up Between Obama and Pawlenty

	Frequency	Percent	Valid Percent	Cumulative Percent
Obama	279	44	45	45
Pawlenty	239	38	39	84
Someone Else	60	10	10	93
Don't Know	41	7	7	100
Total	618	98	100	

Percent within Do you consider yourself a...

		Obama or Pawlenty?				Total
		Obama	Pawlenty	Someone Else	Don't Know	
Do you consider yourself a...	Democrat	82%	6%	6%	6%	100%
	Republican	5%	80%	11%	4%	100%
	MN Independence Party	38%	50%	8%	5%	100%
	Other Party	33%	52%	6%	9%	100%
	Not Political	50%	33%	0%	17%	100%
Total		46%	41%	8%	5%	100%

How Warm (100) or Cold (0) do you feel toward...

	Barack Obama	Sarah Palin	Tim Pawlenty	Tom Emmer	Mark Dayton	Tom Horner
Mean	49	38	46	43	48	50
Mode	0	0	50	50	50	50
Number and (Percent) Respondents Unsure	1 (0%)	22 (4%)	16 (3%)	101 (16%)	40 (6%)	147 (24%)

The next table is the “horse race” question for the gubernatorial race. Those that follow are a series of cross tab constructed to show the influence of demographic factors on voter choice. These tables are of all respondents of this survey. Following these tables are tables constructed of likely voters.

If the election was held today, who would you vote for?

(all respondents)

	Frequency	Percent	Valid Percent	Cumulative Percent
Dayton	232	37	37	37
Emmer	168	27	27	64
Horner	114	18	18	83
Not Sure	50	8	8	91
Other	41	7	7	97
Won't Vote	16	3	3	100
Total	622	99	100	

Definitely or Leaning DAYTON

		Frequency	Percent	Valid Percent	Cumulative Percent
Valid	Definite	130	21	56	56
	Leaning	102	16	44	100
	Total	232	37	100	
Missing	System	396	63		
Total		628	100		

Definitely or Leaning EMMER

		Frequency	Percent	Valid Percent	Cumulative Percent
Valid	Definite	94	15	56	56
	Leaning	74	12	44	100
	Total	168	27	100	
Missing	System	460	73		
Total		628	100		

Definitely or Leaning HORNER

		Frequency	Percent	Valid Percent	Cumulative Percent
Valid	Definite	30	5	26	26
	Leaning	85	13	74	100
	Total	114	18	100	
Missing	System	514	82		
Total		628	100		

Definitely or Leaning OTHER

		Frequency	Percent	Valid Percent	Cumulative Percent
Valid	Definite	5	1	13	13
	Leaning	36	6	87	100
	Total	41	7	100	
Missing	System	587	93		
Total		628	100		

Percent within Do you consider yourself a...

		Who are you definite or leaning toward?			
		Dayton	Emmer	Horner	Total
Do you consider yourself a...	Democrat	81%	4%	15%	100%
	Republican	7%	70%	23%	100%
	MN Independence Party	31%	26%	43%	100%
	Other Party	32%	25%	43%	100%
	Not Political	33%	33%	33%	100%
Total		45%	33%	22%	100%

Percent within Geographic Region

		Who are you definite or leaning toward?			
		Dayton	Emmer	Horner	Total
Geographic Region	Seven County Metro	49%	28%	23%	100%
	Outstate	41%	38%	21%	100%
Total		45%	33%	22%	100%

Percent within Gender

		Who are you definite or leaning toward?			
		Dayton	Emmer	Horner	Total
Gender	Male	39%	36%	25%	100%
	Female	52%	29%	19%	100%
Total		45%	33%	22%	100%

Percent within Household Income

		Who are you definite or leaning toward?			
		Dayton	Emmer	Horner	Total
Household Income	Under \$15,000	59%	24%	17%	100%
	\$15,000 to \$25,000	55%	28%	18%	100%
	\$25,000 to \$35,000	39%	35%	26%	100%
	\$35,000 to \$50,000	52%	30%	19%	100%
	\$50,000 to \$75,000	38%	36%	26%	100%
	\$75,000 to \$100,000	52%	26%	22%	100%
	\$100,000 or more	37%	34%	29%	100%
Total		45%	32%	24%	100%

Percent within Age

		Who are you definite or leaning toward?			
		Dayton	Emmer	Horner	Total
Age	18 to 24	53%	33%	14%	100%
	25 to 34	51%	25%	24%	100%
	35 to 44	36%	32%	32%	100%
	45 to 54	38%	37%	25%	100%
	55 to 64	49%	29%	22%	100%
	65 and over	48%	39%	13%	100%
Total		45%	33%	22%	100%

Registered Voters,

If the election was held today, who would you vote for?

		Frequency	Percent	Valid Percent	Cumulative Percent
Valid	Dayton	222	38	38	38
	Emmer	158	27	27	65
	Horner	111	19	19	85
	Not Sure	43	7	7	92
	Other	40	7	7	99
	Won't Vote	7	1	1	100
	Total	581	99	100	
Missing	System	4	1		
Total		585	100		

Registered Voters,

If the election was held today, who would you vote for?

		Frequency	Percent	Valid Percent	Cumulative Percent
Valid	Dayton	222	38	38	38
	Emmer	158	27	27	65
	Horner	111	19	19	85
	Not Sure	43	7	7	92
	Other	40	7	7	99
	Won't Vote	7	1	1	100
	Total	581	99	100	
Missing	System	4	1		
Total		585	100		

The following tables include breakdowns based on SCSU Survey Likely Voter. Three questions were asked of all respondents to determine who of all respondents are most likely to vote. To that end, we asked if the respondents were registered to vote or planned to register, their chances of voting, and how interested they are in the election.

Respondents who indicated they are almost certain to vote, and either that they are registered to vote or planned to register, or have a great deal of interest in the election, were designated as likely voters for purposes of analysis. This subgroup represents 462 respondents in the weighted sample, or 74% of the total sample. The difference between all respondents

Likely Voters

If the election was held today, who would you vote for?

		Frequency	Percent	Valid Percent	Cumulative Percent
Valid	Dayton	184	40	40	40
	Emmer	139	30	30	71
	Horner	89	19	19	90
	Other	24	5	5	95
	Not Sure	22	5	5	100
	Total	458	99	100	
Missing	System	4	1		
Total		462	100		

Likely Voters

Definitely or Leaning DAYTON

		Frequency	Percent	Valid Percent	Cumulative Percent
Valid	Definite	113	24	61	61
	Leaning	71	15	39	100
	Total	184	40	100	
Missing	System	278	60		
Total		462	100		

Likely Voters

Definitely or Leaning EMMER

		Frequency	Percent	Valid Percent	Cumulative Percent
Valid	Definite	88	19	63	63
	Leaning	51	11	37	100
	Total	139	30	100	
Missing	System	323	70		
Total		462	100		

Likely Voters

Definitely or Leaning HORNER

		Frequency	Percent	Valid Percent	Cumulative Percent
Valid	Definite	28	6	31	31
	Leaning	61	13	69	100
	Total	89	19	100	
Missing	System	373	81		
Total		462	100		

Likely Voters

Definitely or Leaning OTHER

		Frequency	Percent	Valid Percent	Cumulative Percent
Valid	Definite	3	1	13	13
	Leaning	21	4	87	100
	Total	24	5	100	
Missing	System	438	95		
Total		462	100		

Likely Voters

Percent within Do you consider yourself a...

		Who are you definite or leaning toward?			
		Dayton	Emmer	Horner	Total
Do you consider yourself a...	Democrat	82%	4%	14%	100%
	Republican	5%	72%	23%	100%
	MN Independence Party	36%	24%	40%	100%
	Other Party	29%	25%	46%	100%
	Not Political	40%	20%	40%	100%
Total		44%	34%	21%	100%

Likely Voters

Percent within Geographic Region

		Who are you definite or leaning toward?			
		Dayton	Emmer	Horner	Total
Geographic Region	Seven County Metro	47%	31%	21%	100%
	Outstate	42%	36%	22%	100%
Total		45%	34%	22%	100%

Likely Voters**Percent within Gender**

		Who are you definite or leaning toward?			
		Dayton	Emmer	Horner	Total
Gender	Male	40%	37%	24%	100%
	Female	51%	30%	19%	100%
Total		45%	34%	21%	100%

Likely Voters**Percent within Household Income**

		Who are you definite or leaning toward?			
		Dayton	Emmer	Horner	Total
Household Income	Under \$15,000	75%	17%	8%	100%
	\$15,000 to \$25,000	64%	24%	12%	100%
	\$25,000 to \$35,000	43%	38%	19%	100%
	\$35,000 to \$50,000	49%	31%	20%	100%
	\$50,000 to \$75,000	37%	36%	27%	100%
	\$75,000 to \$100,000	56%	29%	15%	100%
	\$100,000 or more	36%	33%	31%	100%
Total		45%	32%	23%	100%

Likely Voters

Percent within Age

		Who are you definite or leaning toward?			
		Dayton	Emmer	Horner	Total
Age	18 to 24	48%	39%	13%	100%
	25 to 34	53%	25%	22%	100%
	35 to 44	38%	31%	31%	100%
	45 to 54	36%	40%	24%	100%

Reason for Voting for Candidate

Top 6 Reasons

		Percent of		
		N	Percent of Respondents	Responses
Budget Position		64	7%	12%
Don't like Opposition		63	7%	11%
Education/School		55	6%	10%
Same Political Ideology		131	14%	24%
Same Political Party		71	8%	13%
Taxes		57	6%	10%
	55 to 64	51%	30%	20%
	65 and over	49%	38%	12%
Total		45%	34%	21%

The six reasons were included because they received over 10% of the responses.

Top 6 Reasons by Candidate

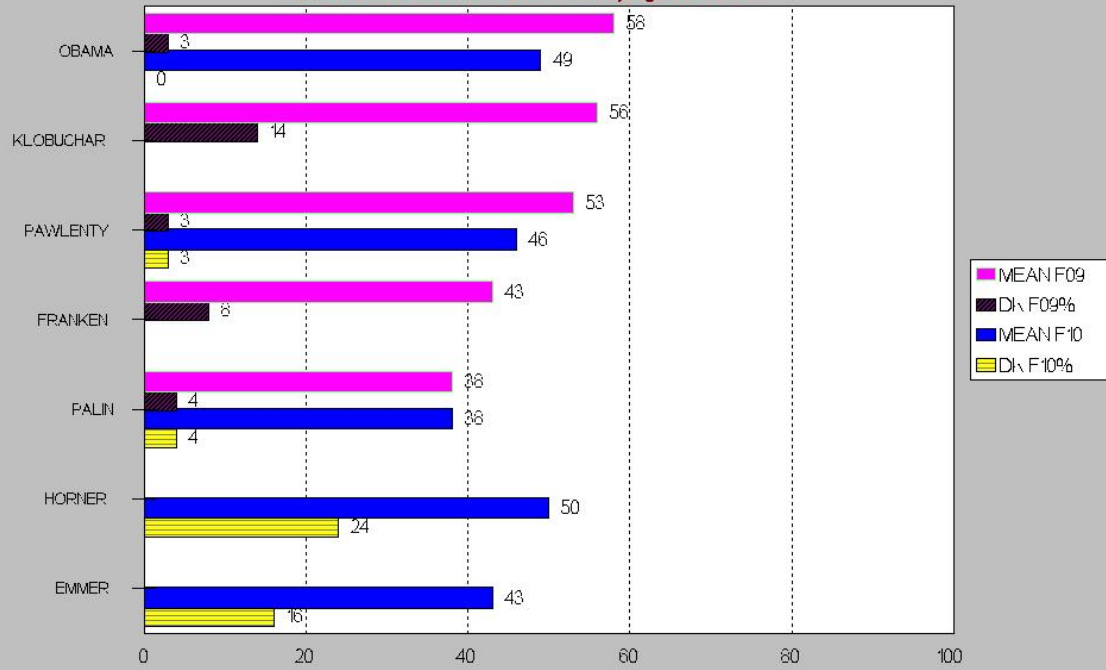
			Who are you definite or leaning toward?			
			Dayton	Emmer	Horner	Total
Six most commonly cited reasons for voting for person	Budget Position	Count	19	34	10	64
		Percent	30%	53%	16%	
	Don't like Opposition	Count	18	20	20	58
		Percent	30%	35%	35%	
	Education/School	Count	39	9	7	55
		Percent	71%	17%	12%	
	Same Political Ideology	Count	60	49	21	130
		Percent	46%	38%	16%	
	Same Political Party	Count	30	35	5	71
		Percent	43%	50%	7%	
	Taxes	Count	25	22	11	57
		Percent	44%	38%	19%	
Total		Count	146	118	56	320

Percentages and totals are based on respondents.

The six reasons receiving over 10% of the responses given.

FEELING THERMOMETER Fall 09-10

Mean of those who could rate// % can't judge dont know



SCSU Survey overall n=550 November 2009 FA;
2010 628 OVERALL

FEELING THERMOMETER Fall 09-10

