

St. Cloud State University

The Repository at St. Cloud State

St. Cloud State Yearbooks

Yearbooks

1943

Talahi yearbook [1943]

St. Cloud State University

Follow this and additional works at: <https://repository.stcloudstate.edu/stcyrbks>

Recommended Citation

St. Cloud State University, "Talahi yearbook [1943]" (1943). *St. Cloud State Yearbooks*. 22.
<https://repository.stcloudstate.edu/stcyrbks/22>

This Book is brought to you for free and open access by the Yearbooks at The Repository at St. Cloud State. It has been accepted for inclusion in St. Cloud State Yearbooks by an authorized administrator of The Repository at St. Cloud State. For more information, please contact tdsteman@stcloudstate.edu.



TALLAM
43

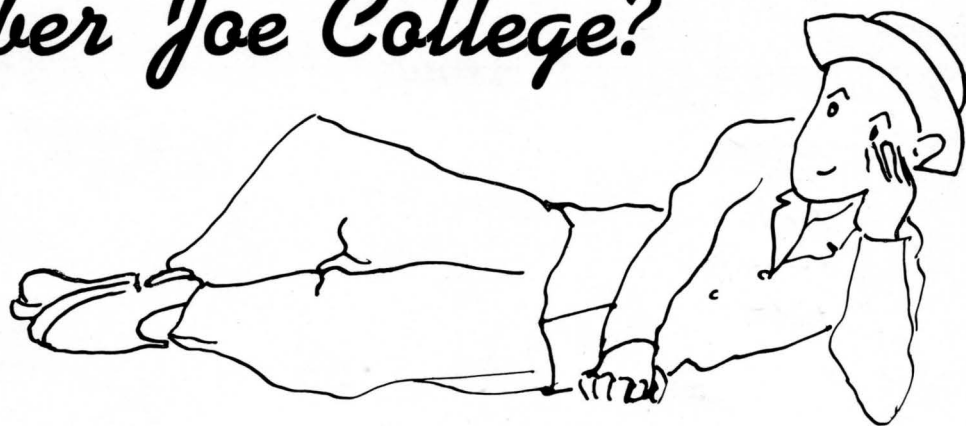


rch
0
797
665
943

THE TALAH

1 - 9 - 4 - 3

Remember Joe College?





Arch
LD
4797
.565x
1943

He's

the 1-9-4-3 TALAH

PUBLISHED BY THE STUDENTS OF
SAINT CLOUD STATE TEACHERS COLLEGE
SAINT CLOUD, MINNESOTA

MARY LEE SMITH

EDITOR IN CHIEF

JOAN LOUISE STAI

BUSINESS MANAGER

ELAINE JOHNSON

ASSOCIATE EDITOR

ROBERT M. POST

DIRECTORY EDITOR

LEON SCHERTLER

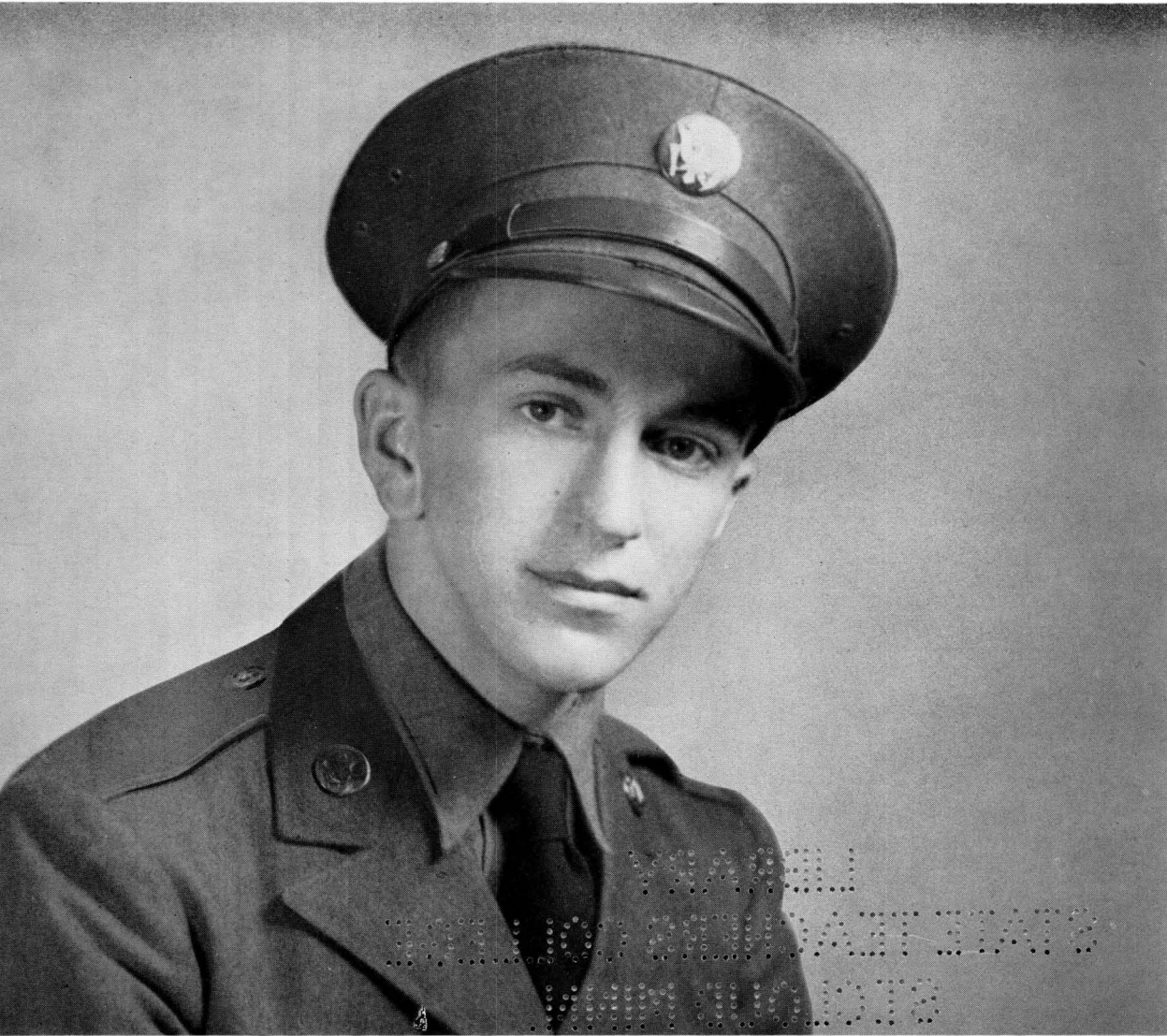
PHOTOGRAPHER

LIBRARY
STATE TEACHERS COLLEGE
ST. CLOUD MINN.

Private Joe now!



SO THIS BOOK IS *Dedicated to Joe* .



57271

LAST year he was Joe College. You girls knew him. You went to the big formal with him; he bought you cokes at that little place downtown. You fellows knew him too. He was terrific on a drive around left end, a good one to touch for a loan along about the end of the month, and always went to class the day you didn't. Joe would have graduated with you—the class of '43—but the tall man in the top hat tapped him on the shoulder, raised an authoritative finger, and Joe stepped out of your ranks into those of the marching men of America.

This year he's Ensign, Lieutenant, Seaman, Cadet, or Private Joe. He writes you letters that make you proud of him and of his country. He writes you letters that never say, "I wish I were home," but always, "There's a job to be finished." Yet if you can read between the lines, you know how much he'd like to be here—to put on an old pair of slacks and hike to the islands, to stand in front of Winged Victory in Old Main watching for a friend and dodging a prof whose lessons he hasn't done for a week, or to wait impatiently in a line of '43 seniors being measured for caps and gowns.

We've spent all year answering Joe's letters. We wanted to tell him what we're doing to hasten his homecoming—of defense classes, first aid work, a campus shared with the Army Air Corps, and fun on a budget so low we scarcely need the state auditors. We wanted to tell him that though his class was not complete in numbers, it was united in spirit. So this 1943 *Talahi* is a letter to Joe—Private Joe—to whom the book is dedicated.

D I V I S I O N S

I. NEWS OF THE HOME FRONT

OFFICERS OF THE ADMINISTRATION - - - 7-8

CLASSES - - - - - 9-28

CAMPUS ORGANIZATIONS

Governing - - - - - 30

Honorary - - - - - 31

Religious - - - - - 32-35

Musical - - - - - 36-37

Athletic - - - - - 38-39

English, Speech, Journalism - - - - - 40-42

Science - - - - - 42

Arts - - - - - 43

Social Studies - - - - - 44

Social - - - - - 45-49

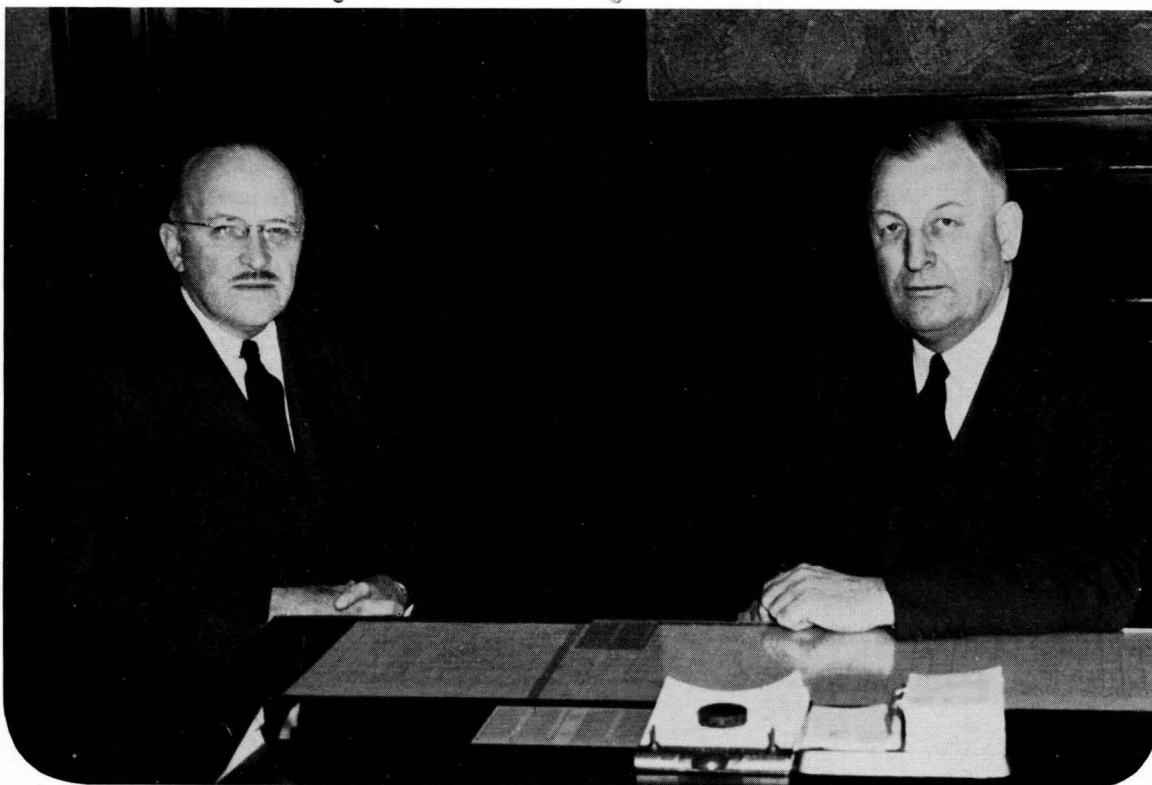
War Activities Council - - - - - 50

FACULTY AND DEPARTMENTAL WORK - - 51-68

II. NEWS FROM THE FRONT - - - - - 69-78

Letters and pictures from our men in service.

ADMINISTRATION



Director Stewart One who has taken an active interest in affairs of the St. Cloud State Teachers College is Warren H. Stewart, our local resident director and president of the Minnesota State Teachers College Board. This board supervises and controls the educational management and the property of the six state teachers colleges in Minnesota. One member is selected from each of the six counties in which a teachers college is located, two are appointed at large, and by law the Commissioner of Education is secretary of the board.

Demands of the present emergency have added many new problems to those that meet the attention of resident director Stewart.

President Selke After evaluating a southern educational nutrition program for the A. F. Sloan Foundation and the American Association of Teachers Colleges of which he was president, Mr. Selke returned in November from a trip to Kentucky.

On February 15, President Selke was granted leave of absence from his duties as college president to enter his new office as state director of the War Manpower Commission. Coordination of state agencies of the federal government, has constituted a large part of Mr. Selke's work.

We have felt the loss of one leader—President George A. Selke—but we have appreciated the sincerity and efficiency of another—Acting President D. S. Brainard.

Administration

John E. Talbot

DIRECTOR OF TRAINING



Beth Porter Garvey

DEAN OF WOMEN

John J. Weismann

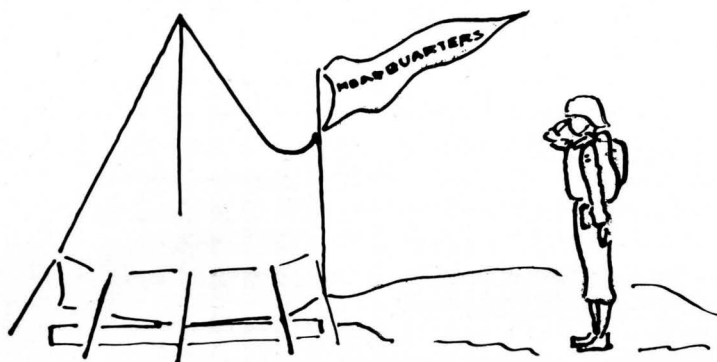
DEAN OF MEN

Headquarters for those who seek advice on student teaching, scholarship, school administrative duties, or personal problems are the offices of Mr. Talbot, Dean Garvey, and Dean Weismann.

Mr. John Talbot is director of student teaching in the Riverview school and in other laboratory schools in the city.

The duty of conducting the U. S. O. hostess plan among T. C. girls was one of the many tasks added to the daily routine of Mrs. Garvey and workers in the student organization office. Mrs. Garvey, in addition to being Dean of Women, is the capable adviser of the War Activities Committee.

During most of the year, Mr. Weismann was in charge of the units of men on the campus who were taking aeronautics. Leadership training and student guidance were also responsibilities of the Dean of Men.





The Talahi

STATE TEACHERS COLLEGE

St. Cloud, - Minnesota

Dear Joe:

Today the rhythm of marching feet in the halls of Old Main marks the hour's change. A solemn service raises Old Glory to its heights above the tall campus oaks. J. C. Brown field reverberates from drill and calisthenics and echoes the harsh voice of a sergeant and the breathless commands of arm-waving coaches. Once-vacant rooms are rowed with chairs in which Army Air Corps men sit listening to the professors who taught you the philosophy of education and of life.

In February, Lawrence Hall girls received orders to move to make way for the Army. Two days later, the hundred orphans were settled in off-campus homes and in Shoemaker Hall. And shortly after that two hundred fifty men of the Army Air Corps were bunking in the girls' rooms and finding telephone numbers in dresser drawers.

Because these men have come to be a part of T. C., we'd like to include their pictures in these pages. We can't do that, but as you look at the pictures of your classmates--freshmen, sophomores, juniors, and seniors--remember that there is a place among them for you and for Uncle Sam's khaki clad cadets on the campus.

Sincerely,

CLASSES

Who's Who IN AMERICAN

Who's Who Among Students in American Universities and Colleges contains the biographies of sixteen of our upperclassmen—twelve seniors and four juniors.

Seniors chosen for recognition were: Arthur Barsness an Al Sirat, who edited an *All-American Chronicle*, and was a member of Kappa Delta Pi and Alpha Psi Omega; Fritz Bierhaus, now a Navy man, once a top-notch football hero and Al Sirat; Ursula Breher, a Minerva and Pi Omegan who was Student Council president; Louis Filippi, an Al Sirat, who won every honor known to T. C. Gridders; Rosemary Gruber, a Minerva and Alpha Psi Omegan who piloted Homecoming and the *Talahi* Revu to success; Elaine Johnson, associate editor of the *Talahi*, Pi Omega Pi president, and a member of Kappa Delta Pi and of the Photozetean Society; Ambrose Kramer, assistant manager of football, cheerleader, and an Al Sirat; Georgia McKay, F. T. A. president and a member of Pi Omega Pi and Kappa Delta Pi; Robert Post, editor of the *1943 Directory* and a Pi Omegan, who is now in the army; Jean Salmon, who created Joe in this year's *Talahi*, a member of Kappa Delta Pi and of the Storyteller Club; and Mary Lee Smith, a Minerva, who edited the *Talahi*, was a member of Kappa Delta Pi and Alpha Psi Omega.

Juniors chosen were Lawrence Brammer, student council treasurer, now in the Army Air Corps; Imogene Bretz, junior class president, a Minerva, and a Pi Omegan; Margaret Ann Bengtson, prominent in music and a Minerva; and Betty Benson, vice-president of Student Council, and a member of Pi Omega Pi and the Minerva Society.

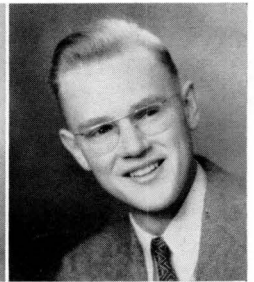
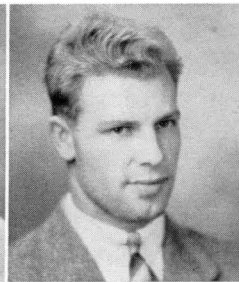
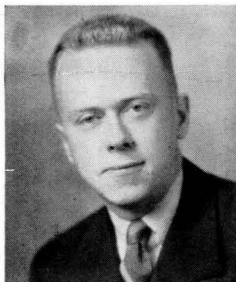
Arthur Barsness

Margaret Ann Bengtson

Betty Benson

Fritz Bierhaus

Lawrence Brammer



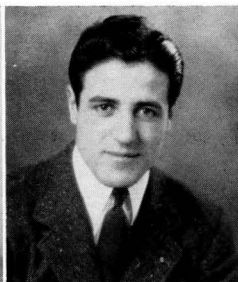
Ursula Breher
John Lane

Imogene Bretz
Georgia McKay

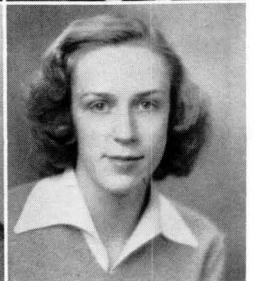
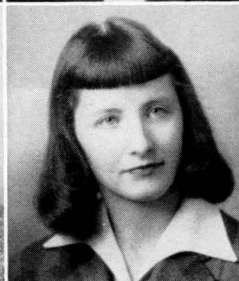
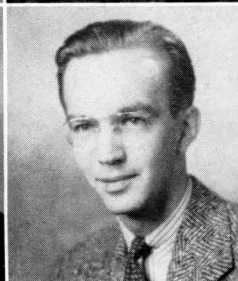
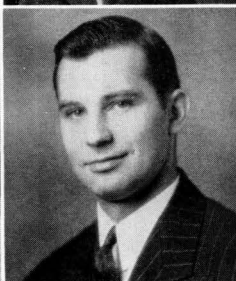
Louis Filippi
Robert Post

Rosemary Gruber
Jean Salmon

Elaine Johnson
Mary Lee Smith



Ambrose Kramer



COLLEGES AND UNIVERSITIES



Pictured above in their favorite surroundings are Larry Brammer, Shorty Bengtson, and Rasby Gruber.

From left to right in the top row, you see Cubby Bretz, Amby Kramer, Urs Breher, Johnny Lane, Fritz Bierhaus, Jean Salmon, and Art Barsness. In the bottom row, are Betty Benson, Louis Filippi, Bob Post, Georgia McKay, and Elaine Johnson.



Senior Class



Officers of the senior class were: George Sycks, Kenny Zakariasen, Vivian Fall, and Marlin McNeal.



Retrospection is a privilege of Seniors. We'll tell you some of the things we've been thinking. It seems a long time since we first came up the walk, hardly knowing what a quarter hour was, but wondering what college would mean to us. And we kept wondering for a long time. Now, when the four years are almost over, we know. We feel less wise and less sure, but more understanding. Four years at TC have given us a little knowledge, enough wisdom to direct its application, and inquiring minds. What more could any senior ask of his alma mater?

We've watched our class, we've been proud of the things that it accomplished, and we've felt the importance of bigger undertakings that will never be finished. We noticed the people who made outstanding contributions and were glad to see some of them given recognition. Robert Post, Fritz Bierhaus, Georgia McKay, Rosemary Gruber, Elaine Johnson, Mary Lee Smith, Louis Filippi, John Lane, Jean Salmon, Ursula Breher, Ambrose Kramer, and Arthur Barsness were the seniors included in "Who's Who in American Colleges and Universities."

The class officers we chose were George Sycks, president; Kenneth Zakariasen, vice-president; Vivian Fall, secretary; Marlin McNeal, treasurer; Ambrose Kramer and Beatrice Miller, Publications Board members.

In the middle of January, our class sponsored the annual Senior Frolic. NYA workers and CPT students joined the collegiates for an evening at USO headquarters, for this year's frolic was entertainment in the manner of a stage door canteen.

Now it's spring and this year is different. Graduating, which was something we always thought of doing, has suddenly become an actuality, an actuality leading to an uncertain future. But in that uncertainty lies a challenge and we mean to accept it!

SENIORS

JEAN ANDERSON—Major: elementary, minor: kindergarten; Y. W. C. A., Waverly, Kappa Delta Pi. ARTHUR BARSNESS—Majors: English, social studies, minor: speech; Chronicle editor, Alpha Psi Omega, Kappa Delta Pi. GENEVIEVE BAYLE—Major: geography, minors: history, physical education; Student Council, International Relations, Photozeteen.



ARGYLE BERSIE—Major: social science, minors: physical education, geography; L. S. A., Lettermen. MILDRED BERTRAM—Major: English, minors: social studies, speech, Spanish; Kappa Delta Pi, English Club, Storyteller, Chronicle. FRITZ BIERHAUS—Major: physical education, minors: social studies, biology; football, Al Sirat, Lettermen.



JENNIE BITSIANES—Major: elementary; Kappa Delta Pi, Photozeteen, Y. W. C. A., Rangers. VIRGINIA BOTZ—Major: elementary, minor: art; Kappa Delta Pi, Art Club, Minerva, Talahi. URSULA BREHER—Major: business education, minors: speech, music; Student Council president, Pi Omega Pi, Minerva, Girls Choir, Newman Club.



DOROTHY BROWN—Major: elementary, minors: art, kindergarten; Student Council, Kappa Delta Pi, Art Club, Thalia, Music Club, Cecilians. PETER BUKOVAC—Major: mathematics; Rangers, Kappa Delta Pi. BETTY-ANN CHIPMAN—Major: elementary; Photozeteen, English Club, Rangers.



ANNE STEMAN (CLOUR)—Major: English, minors: social science, speech, Spanish; Alpha Psi Omega, English Club, Chronicle. IRENE COLBURN—Major: business education, minors: English, mathematics; Chronicle, Yo-Hi. JACK CONLEY—Major: physical education, minors: social science, history; basketball co-captain, Al Sirat, Lettermen.



ARNOLD DAHLE—Major: industrial arts, minors: physical education, history; L. S. A., Inter-religious Council. IVAH DANIELSON—Major: elementary, minors: kindergarten, speech, Inter-Society Board, Student Council, Kappa Delta Pi, Band, Minerva. LESTER DRAGER—Majors: social studies, mathematics; F. T. A.



SENIORS

CAROL EDERHOFF—Major: elementary; Y. W. C. A., Thalia. EDITH EMMEL—Major: art, minors: English; physical education; W. A. A., Inter-Society Board, Art Club, Athenaeum. FLORENCE ENSLEY—Major: elementary; Athenaeum, Yo-Hi, Newman Club.

VIVIAN FALL—Major: elementary, minor: music; Kappa Delta Pi, Music Club, band, Girls Choir, Minerva. LOUIS FILIPPI—Major: industrial arts, minors: history, physical education; football co-captain, basketball, Lettermen, Al Sirat. GERTRUDE GEHRENBECK—Majors: music, history; band, Music Club, orchestra.

EILEEN GREENE—Major: elementary, minor: kindergarten; Minerva, W. S. G. A., Talahi. ROSEMARY GRUBER—Major: English, minors: speech, Spanish; homecoming chairman, Talahi Revue chairman, Alpha Psi Omega, Chronicle, Minerva. VENETTE GUSTAFSON—Major elementary; Inter-Society Board, Photozeteen, F. T. A., Y. W. C. A.

PRISCILLA HARROM—Major: elementary, minor: art; Minerva, Art Club. LUCILLE HARTFIEL—Majors: English, music; Girls Choir, Music Club, Kappa Delta Pi, English Club, Chronicle. LUYERNE HENDRICKSON—Major: physical education, minors: business education, history; W. A. A., L. S. A.

CHARLOTTE HENNINGSGAARD—Major: elementary, minor: kindergarten; Minerva, Wesley Foundation, Cecilian. MARTHA HOLMGREN—Major: business education, minors: art, social studies; Storyteller, Chronicle, Art Club. ELAINE JOHNSON—Major: business education, minors: English, social science; Pi Omega Pi, Kappa Delta Pi, Talahi.

DORIS KLOSS—Major: elementary; W. S. G. A., L. S. A., League of Women Voters, Waverly. AMBROSE KRAMER—Majors: physical education, geography, minor: social science; cheerleader, football, Lettermen, Al Sirat, track. LORRAINE KRUEGER—Major: elementary; Photozeteen, English Club, Rangers.

SENIORS

JOHN LANE—Major: physical education, minors: history, social science; Kappa Delta Pi, Splash Club, Lettermen. GENEVIEVE LEHN—Major: elementary; Newman Club, Athenaeum, League of Women Voters. LLOYD LEHN—Major: science, minors: physical education, social science; Al Sirat, Lettermen, intramural sports.

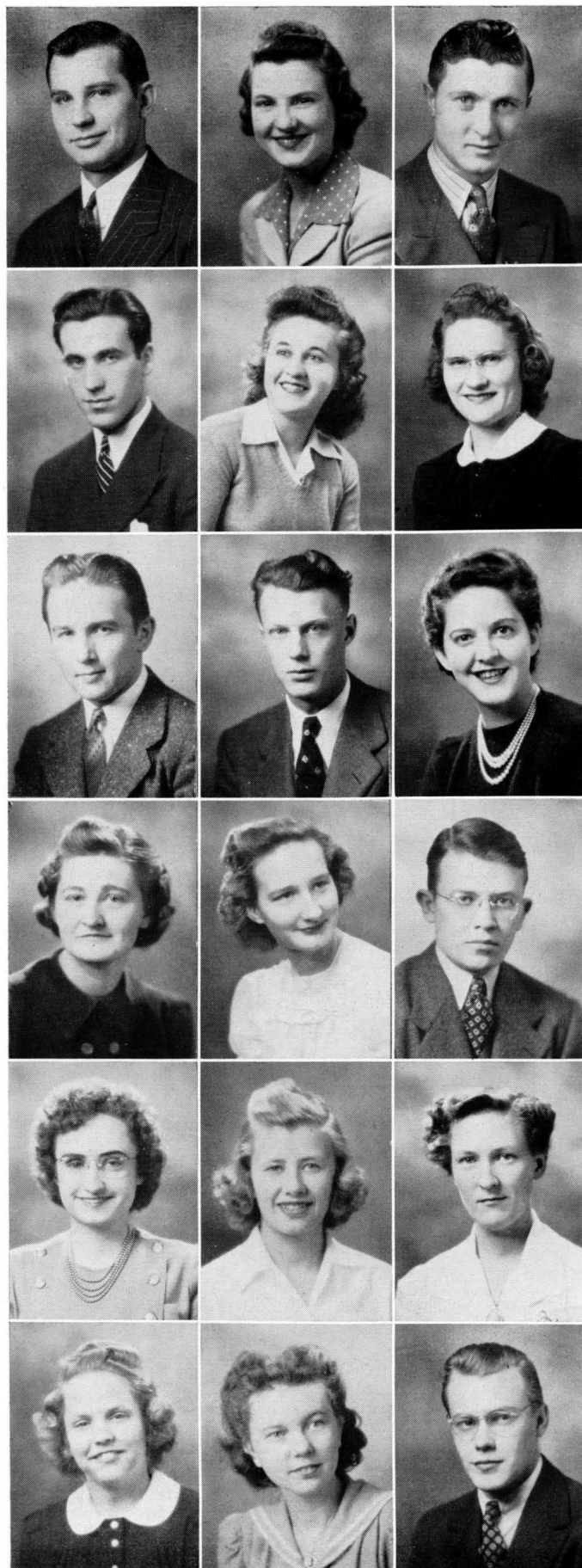
SAM MALKOVICH—Major: social science, minors: business education, history; Kappa Delta Pi, Rangers. GENA MANCINI—Major: business education, minors: social science, history; Photozeteen, Pi Omega Pi, orchestra. GEORGIA McKAY—Major: business education, minors: music, social studies; Pi Omega Pi, Kappa Delta Pi, F. T. A.

MARLIN McNEAL—Major: physical education, minors: history, social studies; Al Sirat, Talahi, Splash Club. ROBERT METZROTH—Majors: industrial arts, social studies; Alpha Psi Omega. ELIZABETH MICHELA—Major: elementary; Thalia, League of Women Voters, Newman Club, Players, Shoemaker Hall President.

ELIZABETH MOODIE—Major: elementary; International Relations Club. BEATRICE MILLER—Major: business education, minors; English, speech; Inter-Society Board president, Storyteller, Student Council, Pi Omega Pi, cheerleader. THOMAS MORTENSON—Major: business education, minors: speech, Alpha Psi Omega, English Club.

RUTH NASH—Major: social studies, minors: business education, English; Inter-Religious Council, Kappa Delta Pi. NANCY NELSON—Major: elementary, minor: kindergarten; Lawrence Hall president, W. S. G. A., Art Club. NORMA NELSON—Majors: Physical education, English; Kappa Delta Pi, W. S. G. A., W. A. A., intramural sports.

PATRICIA NELSON—Major: business education, minors: history, social studies; Y. W. C. A., Calvin Forum. RACHEL LEE CUMMINGS (NORMAN)—Major: business education, minors: English, speech; Kappa Delta Pi, Pi Omega Pi, Athenaeum. JAMES OSTENOE—Major: science, minors: mathematics, music; band, Science Club, Kappa Delta Pi.



SENIORS

MARY PETRICH—Major: English, minors: social science, physical education; Women's Life Saving Corps. REBECCA POND—Major: elementary; Cecilian Glee Club, Wesley Foundation, English Club. ELEANOR PORWOLL—Majors: English, physical education; Storyteller, W. A. A., Newman Club.

ROBERT POST—Major: business education, minors: music, social studies; band, Pi Omega Pi, Talahi. JOHN PROVINZINO—Major: social science, minors: physical education, business education; Rangers. PHYLLIS RAVENS CRAFT—Major: physical education, minors: business education, English; W. S. G. A., Talahi, W. A. A.

MILDRED ROBBINS—Major: physical education, minors: English, history; Student Council, Talahi, Storyteller. JIM ROES—Majors: physical education, mathematics; Al Sirat, Splash Club, Lettermen, football, basketball. MILDRED ROGOSHESKE—Majors: music, social studies; Music Club, L. S. A., Girls Choir.

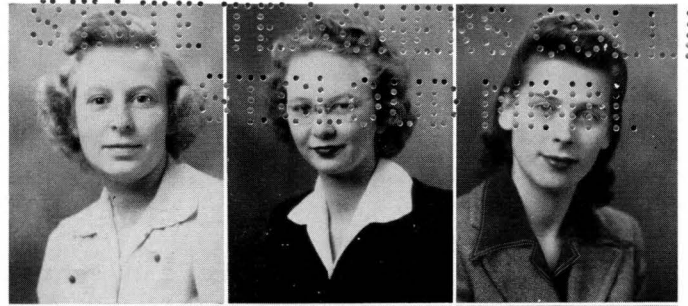
ANITA SABETTI—Major: elementary; League of Women Voters, Thalia, W. S. G. A., Rangers. JEAN SALMON—Majors: English, art; Kappa Delta Pi, Art Club, Talahi, Storyteller. EARL SEATON—Major: physical education, minors: history, social studies; basketball co-captain, football, Al Sirat, Lettermen, Splash Club.

HARVEY SHEW—Major: physical education, minors: social science, history; football co-captain, Al Sirat, Lettermen. MARION SIVERTSON—Major: business education, minors: English, mathematics; Pi Omega Pi, Kappa Delta Pi, Waverly, F. T. A. ETHEL SIVINSKI—Major: elementary, minor: speech; Kappa Delta Pi, Waverly, Players.

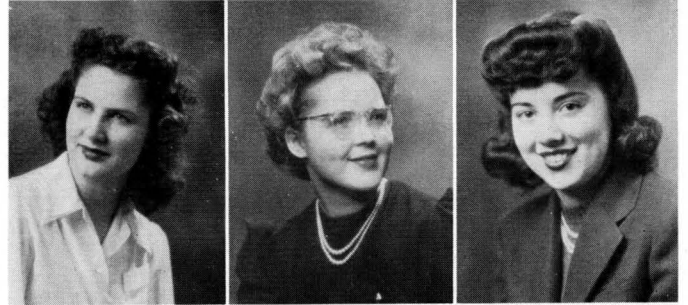
FLORENCE—SJOGREN—Major: social studies, minors: biology, speech; Kappa Delta Pi, Photozetean. DORIS SMITH—Majors: music, mathematics, minor: biology; Inter-Society Board, Student Council, Thalia, orchestra. MARY LEE SMITH—Major: English, minors: social science, speech; Talahi editor, Kappa Delta Pi, Alpha Psi Omega.

SENIORS

JOAN STAI—Majors: business education, mathematics; Talahi business manager, Kappa Delta Pi, Pi Omega Pi, Athenaeum, F. T. A. DOROTHY STARK—Major: elementary; Thalia, F. T. A., L. S. A. JOYCE STEPANEK—Major: business education, minors: physical education, English; W. A. A., Talahi, English Club, Wesley Foundation.



DORIS MAY SURFACE—Major: elementary; Minerva. NELMA TAIPOLE—Major: English, minors: speech, social studies; Talahi, Rangers, Players, English Club, Storyteller. ROSE MARIE TINTES—Major: elementary, minor: Kindergarten; Athenaeum, Inter-Religious Council, Newman Club.



WILLARD WALTERS—Major: physical education; minors: mathematics, history; Al Sirat, basketball, Lettermen. CLAIRE WARWEG—Major: English; minors: speech, physical education; Athenaeum, Chronicle, W. A. A. BERNARD WOESSNER—Major: social studies, minors: business education, physical education; Al Sirat, Talahi Newman Club.



DOROTHY YUNGERS—Major: business education, minors, English, music; Bond Queen, Kappa Delta Pi, Pi Omega Pi, Inter-Society Board, Storyteller, Student Council.



Left below: In the fall, counselees met members of the faculty at the tea to which all new students and freshmen were escorted by their upperclassmen counselors.

Right below: Four rangers became Four Inkspots for an evening when seniors entertained the college at the annual Senior Frolic. Louis Filippi, Guido Detragiache, Miles Vukson, and Jimmy Warren are the entertainers pictured before the mike at "USO Headquarters."



YHARLL HALL...OO 28HDAET ETAT2 HMM QUODT2 *Junior Class*

This year's juniors are next year's seniors—or are they? Our class became smaller and smaller as the service took one after another of its members. Not only the boys, but the girls left to answer the call to colors. The WAVES claimed Ina Marie Ohs; Marjorie Mills is wearing a WAAC uniform.

In spite of the fact that many of the fellows left to don fighting equipment instead of athletic suits, the junior class shared in football and basketball honors. Al Banks received letters in both football and basketball, and is one of the football captains-elect for next year. Stanton Williams and Louis Weinstein both won football letters.

The traditional junior formal gave way to a theater party—inexpensive, ration point-less, but a success! (Juniors still remember the picnic their class sponsored last year, but rationing prevented the repetition of such an affair.) One combination dancing and game party was given by the class in the winter. College students, faculty members, and C. P. T. men were invited. Cokes were two for five cents; dances were a smile and an invitation.

The juniors were led by Imogene Bretz as president, Jane West as vice-president; Marion Sjolín as secretary; and Mary Ash as treasurer. Betty Benson was our W. S. G. A. Board member. Cecil Haas and Janet Helstrom represented the class on the Publications Board. Eileen Korpi and Bill Potter were historian and parliamentarian.

Four juniors were chosen to be included in the national publication, *Who's Who Among Students in American Universities and Colleges*. Betty Benson, Margaret Ann Bengtson, Imogene Bretz, and Lawrence Brammer were the first underclassmen of TC to be selected for the honor.



Junior Class officers were Marian Sjolín, Imogene Bretz, and Jane West.

JUNIORS



LILLIAN
ANSHUS

BETTY
BENSON

ORVILLA
BRUNSKILL

MARY
ASH

LA VONE
BERGSTROM

JEANNE
CARPENTER

SHIRLEY
ATKINSON

ALICE
BINGER

ARDELLE
CHASE

UARDA
BACCHUS

LAWRENCE
BRAMMER

ALICE
COOK

ALBERT
BANKS

IMOGENE
ERETZ

HARVEY
FEIERABEND

MARY
BAUMAN

THAYNE
BROIN

BEULAH
FOSS

MARGARET
BENGTON

SHIRLEY
BROWN

ELNA
FRANK

The "Quiz Kids" entertained at the USO Headquarters on the night of the annual Senior Frolic.

T. C. Students engrossed in a card game at the Student Union.



MILDRED
FRANK

HAROLD
GULDE

HOWARD
HANSON

VIVIAN
HENNEMAN

GLADYS
FRANZEN

CECIL
HAAS

MARY
HELMANN

MELVIN
HOFF

ROSEMARY
GABRIEL

RICHARD
HANNULA

JANET
HELMSTROM

ADRIAN
JOHNSON



JUNIORS



Beverly Johnson
 Clayton Johnson
 Vera Johnson
 Myron Kennedy
 Mary Kerzie
 Eileen Korpi
 Minnie Krueger
 Marie Lechner
 Dennis Lehn
 Dorothy Magnuson
 Theresa Mattaini
 Olive Miller
 Delorus Nelson
 Helene Nixon
 Ina Marie Ohs
 Phyllis Olson
 Lucile Pearson
 Lucille Peschl
 Elaine Peterson
 William Potter
 Ruth Pramann
 Jean Quarve
 Raymond Ringer
 Bertha Robbin
 Rae Robbins
 Ragnhild Roisum
 Helen Sauer
 Gladys Schmidt
 Evelyn Schultz
 Charlotte Sindelar
 Marian Sjolin
 Mary Stelzig
 Reid Straub
 Elizabeth Strauss
 Walter Swanson
 June Tangen
 Robert Tuttle
 Gallerane Vitali
 Carroll Waller
 Kathleen Wasche
 Louis Weinstein
 Jacqueline West
 Stanton Williams
 Margery Wollam
 Philip Youngner

Sophomore Class



Last fall, class officers were Marjorie Halpin, Dick O'Fallon, Shirley Carlson, and Jeanette Rolfes.



At the outset of the year the four capable underclassmen heading the sophomore class were Dick O'Fallon, president; Shirley Carlson, vice-president; Marjorie Halpin, secretary; and Jeanette Rolfes, treasurer. Carol Stewart was the class representative on the Women's Self Governing Association Board and Shirley Scheerer on the Publications Board. Mr. Warren Kasch and Miss Margaret Ludwig were the advisers.

Conditions of the times were reflected in the changing status of the officers. When Ray Zakariasen, who had been elected vice-president last spring, joined the Coast Guard, Shirley was elected to fill his place. When Dick O'Fallon on army reserve was called into service by the Army Air Corps, Shirley stepped from the vice-presidency into the presidency. Faculty advisers, as well as class members, made changes which took them away from T. C. In May, Miss Ludwig left for a government position in Washington, D. C.

Sophomores made plans to sponsor a St. Patrick's Day party at Eastman Hall in collaboration with the freshmen. But this project was taken over by a recreational committee representing the entire school so that the men of the Army Air Corps could be included in a bang-up celebration. In May, class members enjoyed a theater party at the Paramount.

Other sophomores in addition to Dick and Ray left during the year to answer the call to arms. Some of them were Jim Hills, Art Holmgren, Guido Detragiache, James Durrenberger, Edward Eggers, Eloy Kennedy, George Ketcham, Loren McCarty, Don Korkowski, James Warren, Stanley Voth, Donald Renn, and Bill Strong.

Sophomores won honors in many fields. They helped to make football history, for names like Kessler, Detragiache, Hills, Hambrecht, Renn and Beseman were yelled from the bleachers many times during the fall quarter. Geraldine Breher, Norma Ordahl, and Roger Goenner were pledged and initiated into the Alpha Omicron chapter of Pi Omega Pi, honorary business education fraternity. Shirley Scheerer has been elected orientation chairman for next year.

SOPHOMORES



Elnore M. Ahlborn
Janette Almer
Berniece J. Anderson
Maxine C. Anderson
Dorothy Andrews
Marjorie J. Anshus

Marina E. Axeen
Clifford G. Balder
Lorraine H. Baldy
JoAnn H. Barthelemy
Mary E. Becker
Gordon M. Beseman

Francis Bickham
Connie Binnie
Helen J. Bollum
Eunice H. Boraas
Geraldine M. Breher
Mildred B. Breiland

Hilda G. Brichacek
Ardith M. Burrell
Darline E. Cain
Arthur M. Campbell
Gale Campbell
Dorothy M. Carlin

Shirley D. Carlson
Irene Chmielewski
Grace G. Coryell
Lorraine Cottle
Margaret M. Crust
Adeline Czeck

Margaret M. Czeck
Helen M. Dickmeyer
Alma E. Ekstrom
Helvie J. Erickson
Shirley R. Fjeldheim
Edna Friberg

Peggy L. Fugleberg
Mildred M. Geistfeld
Roger J. Goenner
Josephine Gorton
Rilla J. Graham
Mary V. Griffin

Lorraine Gundershaug
Frances J. Gustafson
Ruth Marie Guslander
Arlie M. Hall
Marjorie R. Halpin
Henry M. Hambrecht, Jr.

Laura V. Hanson
Helen Harakel
Winnifred M. Headland
Mildred Hicks
Jim Hills
Arthur C. Holmgren

SOPHOMORES

Dolores Hunt
Mary Ann Jarnet
Alice Jelinek
Arleen Johnson
Dolores Johnson
Dorothy Johnson

Elsie Mae Johnson
Janet Johnson
Juanita Johnson
Viola Johnson
Vera Jones
Joyce Kane

Helen Kelly
Eloy Kennedy
Thylma Kittleson
Donald Korkowski
Judy Koster
Mabel Lalim

Shirley Lanes
Mary Ann Lanigan
Dorothy Magnell
Marie Magnuson
Adelaide Manthei
Loren McCarty

Marian McGee
Rosalie McGough
Avis Meers
Laura Mellan
Dolores Mieske
Irene Moe

Virginia Moeller
Alyce Mooney
Margaret Nelson
Marian Nelson
Lois Jane Nissen
Marjorie Nodslre

Dorothy Oetting
Richard O'Fallon
Lorraine Ohotto
Helen Olson
Mary Ann Omann
Peggy O'Neill

Ruth Osgood
Delores Oster
Dorothy Paal
Jane Paulson
Hilda Penning
Douglas Person

Dorothy Peterson
Elda Peterson
Ione Peterson
Ruby Peterson
Sheila Peterson
Shirley Peterson



SOPHOMORES



Alberta Prasch
Joan Pratschner
Mildred Reiners
Theresa Renner
Luella Richter
Dorothy Robertson

Jeanette Rolfes
Elzera Roth
Quentin Ruehle
Richard Rygh
Shirley Sampson
Joyce Sayer

Helen Schadeg
Shirley Scheerer
Pearl Schenk
Virginia Schmit
Deloris Scott
Helen Scully

Josephine Sevada
Donna Sigfrid
Leona Simpson
Josephine Snakenberg
Mary Jean Snyder
Martha Soltis

Evangeline Speier
Irene Stachowski
Marjorie Stanchfield
Elaine Steen
Verna Steffen
Carol Stewart

Irene Storch
Vivian Stroman
Helen Swedzinski
Jeanne Talbot
Barbara Thornton
Evangeline Toft

Rosemary Tuckek
Betty Vanden Eykel
Carolyn Vaughan
Corrine Velde
Lorraine Visser
Mabel Walseth

James Warren
Bettie Wells
Mary Lou Willard
Ruth Elaine Winter
Vantyne Wulling



Joe, you aren't out of place; you belong on every page of this 1943 Talahi, our yearbook and yours!

FRESHMAN CLASS



Freshman class officers were: Muriel Barsness, Connie Brainard, Mary Gross, and Anne Ervin.

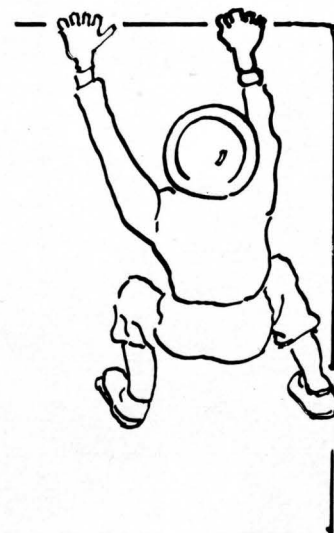
Remember how insignificant you felt as that shy freshman with a green cap perched on the top of your head? We felt that way, too—afraid, serious, homesick, and a wee bit hopeful—that was our crowd. We changed soon though. We learned quickly that those wise appearing upper classmen are mighty nice people, and that the faculty are grand friends. And as they made room for us, we entered into the spirit of the college life about us.

Remember homecoming and its most important feature for freshies, the traditional tug-of-war? Like most of our predecessors we won! Within a few seconds some one hundred and seventy-five caps and ribbons were removed for the last time. Somehow the little victories seemed pretty important at the moment. And then again, perhaps it's for the privilege of such little victories that you fellows out there are ensuring us that big victory.

Remember how proud you were to be a part of TC's rich tradition in the field of sport? Because a lot of you couldn't be with us to win those conference football and basketball championships some of us had to fill the gaps. Freshmen like Aamot, Ilertson, Lieske, Otterness, Shelton, and Sherman upheld the glories of the football squad; while Lieske, Perkins, and Jackson did their big part to make TC basketball history.

Remember how you waited until you were all well acquainted and then elected your class officers? This year the winter quarter found us electing a roster of women to direct our activities. Included in the group were Anne Ervin, president; Muriel Barsness, vice-president; Mary Evelyn Gross, secretary; Constance Brainard, treasurer; Connie Wurst, Board of Publications representative; and Beverly Aubrecht, W. S. G. A. member. Miss Dale and Mr. Anderson were our advisers.

Memories—pleasant treasures of the ages past, gifts to be handed down to succeeding classes. We've just lived them. You're fighting to preserve them for future generations.



FRESHMEN



Row 1—Gertrude Beacom, Joan Buethe, Muriel Barsness, Lawrence Anderson, George Byers. **Row 2**—Constance Brainard, Echo Anderson, Betty Ann Beerling, Betty Barta, Evelyn Alford, Ruth Bautch, Phylliss Bagley. **Row 3**—Mildred Bunnell, Phillip Aamot, Mary Lou Brouillard, Marie Becker, Harlan Anderson, Florence Blake, Margaret Blomberg. **Row 4**—Beatrice Bullard, Arlene Brandt, Rosemary Becker, Paul Aamot, Betty Ann Bruder, Beverly Aubrecht, Lyman Boyum, Susan Begin.

Row 1—Rita Mae Hoffman, Ethel Jo Gruber, Vivian Jungclaus, Mary Margaret Hoglund, Wallace Jackson. **Row 2**—Ray Kimler, Helen Holmgren, Bernil Hauswedell, Mary Hiltner, Phyllis Johnson, Charles Gaetz. **Row 3**—Shirley Hammond, Alice Gardner, Kay Kaercher, Dolores Kalkman, Elsie Ann Hougen, Junella Helgeson. **Row 4**—Colette Kipp, Phyllis Glaser, Helen Hawley, Esther Hendrickson, Vernice Greenhagen, Alton Hallaner.



FRESHMEN



Row 1—Mildred Faust, Anne Ervin, James Comer, Dorothy Carlson, Russell Dowell. **Row 2**—Leona Carlson, Hazel Dahl, Esther Dahlberg, Alta Carlson, Florence Czeck. **Row 3**—Morna Clark, Marion Fudler, Carl Cochrane, Marjorie Christle, Genevieve Flint, Edith Engstrom, Rose Marie Fedor. **Row 4**—Lucille Decker, Maida Eby, Wanda Dovre, Alyce Erickson, June Card, Shirley Fouquette, Doris Fredrickson.



Row 1—Rueben Lieske, James McCarthy, Priscilla Loecken, Betty Koprek, Rudy Meyer, Elaine Kropp. **Row 2**—Charlotte Morben, Vivian Larrabee, Martha Laine, Norma Morland, Lorraine Leffingwell, Catherine Mack, Ruth Mahon. **Row 3**—Elizabeth Moore, Mary Alice LeRoy, June Larson, Linnae Lindemann, Gladys Lagerquist, Velma Nelson, Margaret Myers. **Row 4**—Mae Kolstad, Elaine Nyhus, Audrey Kriedman, Bill Martinson, Celestine Nathe, Norma Larson, Betty Jeanne Mohr.



FRESHMEN



Row 1—Eleanor Schultz, Audrey Potter, Carmen Sheldon, Jeanne Sauer. **Row 2**—Mildred Revering, Mary Lou Reel, Virgie Olson, Helen Rodgers, Eugene Solfelt. **Row 3**—Betty Polman, Florence Roberts, Mary Margaret Prasch, Dolores Olson, Mary Ann Solinger, Hermina Schleper. **Row 4**—Leon Schertler, Owen Shelton, Bonnie Ann Olson, Carl Pohl, Laurianna Schulte, Jerome Otterness.

Row 1—Alphonse Wiechmann, Ralph Wenck, Edward Perkins, Myrtle Marie Varner, Alice Zellgert. **Row 2**—Leona Van Gerpen, Connie Wurst, Dorothy Thomas, Margaret Vann Offeren, Alan Pettit. **Row 3**—Gladys Zwemke, LaVerne Steinke, Muriel Wirth, Dorothy Swedzinski, Rose Vasaly, Elaine Strande, Ruth Vigren. **Row 4**—Edna Welz, Shirley Walleen, Mary Jo Super, Mary Stark, Corinne Tideman, Adeline Thompson, Helen Youngner, Mary Alice Thull.





The Talahi

STATE TEACHERS COLLEGE

St. Cloud, - Minnesota

Hello Joe:

How many clubs did you belong to in the "good old days"? By the close of this year, the "joiners" were tired but wise individuals. For, you see, no campus organizations (with the exception of the Choral Club) have been discontinued. Their worthwhile purposes and faithful supporters kept them alive. So we're still struggling along forty-some organizations strong, minus the large memberships you remember.

We know numbers aren't everything, but smaller membership means smaller budgets and fewer activities and more responsibility on the shoulders of a diminutive group of supporters.

We're proud of the people who kept our organizations going--who used their initiative for entertainment and enlightenment when funds were low.

Here they are--the members of our campus organizations and their advisers. Let's "sound-off" in their praise.

As ever,

ORGANIZATIONS



Student Council: ROW 1: Mrs. Garvey, Dorothy Yungers, Ursula Breher, Mr. Anderson, Elaine Johnson, Howard Hanson, Richard O'Fallon, Miss Hill. ROW 2: Mildred Robbins, Georgia McKay, George Sycks, Beatrice Miller, Dorothy Brown, Irene Stachowski, Willard Walters. ROW 3: Kathleen Wasche, Lawrence Brammer, Doris Smith, Ardelle Chase, Betty Benson, James Warren, Gene Bayle.

Womens Self Governing Association: ROW 1: Ina Marie Ohs, Miss Helgen, Mrs. Garvey, Mrs. Sharp, Vivian Henneman, Phyllis Ravenscraft. ROW 2: Nancy Nelson, Phyllis Olson, Delorus Nelson, Carol Stewart, Ardelle Chase, Norma Nelson, Betty Benson, Rita Mae Hoffmann.

STUDENT COUNCIL: Student Council is the steering committee of college activities. The executive board of the Council also comprises the executive board of the War Activities Committee. Officers of the board were Ursula Breher, president; Betty Benson, vice-president; Dorothy Yungers, secretary; and Larry Brammer, treasurer.

Ursula Breher and Dick O'Fallon were delegates to the Student Victory Assembly at Carleton College in January. Work of the council included planning vacations, buying books for the Victory Book Campaign, and presenting a convocation program.

WOMENS SELF GOVERNING ASSOCIATION: Some of the functions of the WSGA this year have been supervising housing conditions for college women, arranging meetings of house presidents, and planning a convocation program to promote interest in the teaching profession. The board also promoted correspondence with T. C. students now in the service and participated in the Victory Book Campaign.

The executive board included Ardelle Chase, president; Ina Marie Ohs, vice-president; Phyllis Ravenscraft, secretary; Bertha Robbin, corresponding secretary; and Norma Nelson, treasurer.



Pi Omega Pi: ROW 1: Sergeant John Sundberg (alumnus), Mary Ann Bauman, Gena Mancini, Alice Binger, Joan Stai, Lucille Peschl, Beatrice Miller, Miss Ferro, Dr. Folkerts. ROW 2: Georgia McKay, Ursula Breher, Mary Jane Heimann, Elaine Johnson, Jane West, Rachel Lee Cummings, Marion Sivertson, Gladys Schmidt, Betty Benson.

Kappa Delta Pi: ROW 1: John Lane, Joan Stai, Florence Sjogren, Miss Stanley, Mr. Paulu. ROW 2: Mildred Bertram, Virginia Botz, Dorothy Brown, Dorothy Yungers, Rachel Lee Cummings.

PI OMEGA PI: Organized in December 1939, the Alpha Omicron chapter of Pi Omega Pi is a national honorary business education fraternity. Dr. C. J. Folkerts was initiated as a faculty adviser in November 1942. When Miss Ferro accepted a civil service appointment in Panama, he became the frat's sponsor. Two pledge services and initiations were held during the year—in November and in May. The fraternity assisted in the making of surgical dressings and contributed to the Red Cross and to the Victory Book Campaign.

Elaine Johnson headed the chapter as president. Other officers were Marion Sivertson, vice-president; Mary Ann Bauman, secretary; Ursula Breher, treasurer; Mary Jane Heimann, historian.

KAPPA DELTA PI: Officers of the Gamma Pi chapter of Kappa Delta Pi, the national educational fraternity on the campus were: John Lane, president; Florence Sjogren, vice-president; Virginia Botz, secretary; Joan Stai, treasurer; Delorus Nelson, parliamentarian.

In general the programs during the year emphasized education during the war and what it should be during the post war period. On December 15, the pledges were initiated at the annual Christmas party. The banquet and formal initiation of new members on February 19 highlighted the chapter's social calendar.



Inter-Religious Council: ROW 1: Art Campbell, Ruth Nash, Mrs. Garvey, Mr. Talbot, Arnold Dahle. ROW 2: Delorus Nelson, Kathleen Wasche, Myron Kennedy, Marjorie Nodsle, Jeanne Talbot.

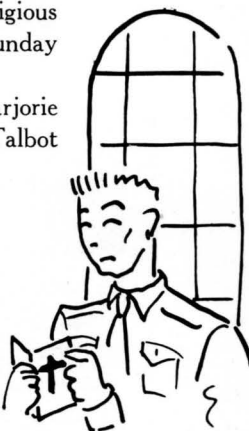
Calvin Forum: ROW 1: Art Campbell, Georgia McKay, Lorraine Leffingwell, Arleen Johnson, Nelma Taipole, Myrna Erickson, Patricia Nelson, Alice Gardner, John C. Cochrane. ROW 2: Rev. Slosser, Lorraine Cottle, Miss Paull, Leona Simpson, Carl Cochrane, Dorothy Andrews, Mr. Brainard.

INTER-RELIGIOUS COUNCIL: Coordinating the religious activities on the campus, planning programs in which all the groups can participate, and promoting good fellowingship are the aims of the Inter-Religious Council. The group sponsored Spiritual Emphasis Week, Brotherhood Week, and planned the Palm Sunday services for the college.

Officers for the year have been Kathleen Wasche, president; Arnold Dahle, vice-president; Marjorie Nodsle, secretary-treasurer; and Ruth Nash, Church Relations Chairman. Mrs. Garvey and Mr. Talbot are the advisers.

CALVIN FORUM: Calvin Forum is a religious organization of Presbyterian students. Highlights of the year's program were four talks: "How Much Should We Know to Have Good Morale During War" by Mr. D. S. Brainard, "College Students' Part in the War" by Mr. Cochrane, "Korea and Japan Relations in the War" by Dr. Clark from Korea, and "The Salvation Army and War" by Mrs. Booth Wood.

Officers for the year have been Art Campbell, president; Phyllis Johnson, vice-president; Patricia Nelson, secretary; Vera Jones, treasurer. Miss Paull, Mr. Brainard, Dr. Clugston, and Mr. Cochrane are the advisers.





Wesley Foundation—ROW 1: Douglas Person, Shirley Hammond, Joan Buethe, Dr. H. C. Logan. ROW 2: LaVerne Steinke, Bettie Wells, Darline Cain, Helen Holmgren, Joan Stai, Miss M. Martin. ROW 3: Edna Friberg, Jeanne Carpenter, Mary Ann Bauman, Ardith Burrell, Ruth Pramann, Connie Binnie, Norma Ordahl, Winnifred Headland. ROW 4: Beatrice Bullard, Clayton Johnson, Gladys Franzen, Carol Pohl, Barbara Thornton, Carmen Sheldon, Jeanne Talbot.

YWCA—ROW 1: Miss A. Brohaugh, Jane Paulson, Donna Sigfrid, Arlie Hall, Helen Holmgren, Lorraine Leffingwell, Alice Gardner, Ruth Nash, Ardis Remquist, Patricia Nelson, Miss E. Graves. ROW 2: Mary Ann Bauman, Muriel Wirth, Venette Gustafson, Morna Clark, Phyllis Glaser, Gladys Lagerquist, Catherine Mack, Phyllis Johnson, Gladys Zwemke, Edna Friberg, Corinne Tideman. ROW 3: Georgia McKay, Martha Soltis, Helen Olson, Myrtle Varner, Jean Anderson, Irene Moe, Carol Ederhoff, Carol Stewart, Delorus Nelson, Vivian Larrabee, Joyce Sayer, Muriel Barsness.

WESLEY FOUNDATION: Wesley Foundation, an organization for Methodist students, presented Mr. Rowland Anderson, Mrs. Robert Terwilliger, Bishop Kemerer, and Miss Graves as speakers on their 1943 program. A panel on the Negro problem in the United States was given by students. Delegates were sent to the Methodist Student Conference in Minneapolis at which Jeanne Talbot was elected secretary of the Minnesota unit.

Jeanne Talbot and Jeanne Carpenter have been the presidents of the organization. Miss Martin and Miss Cole are the advisers.

Y. W. C. A. "Understanding the World Today for a Better World Tomorrow" was this year's theme for the Young Women's Christian Association. Highlights of the year were the candlelight initiation service in October, formal installation service and supper at the Mohr Guest House, and the Thanksgiving and Christmas worship services.

Georgia McKay attended the area conference at the University of Minnesota. Delorus Nelson was the president; Georgia McKay, vice-president; Joyce Sayer, secretary; and Jane Paulson, treasurer. Miss Graves and Miss Brohaugh are the advisers.



LSA—Top Picture—ROW 1: Vivian Larrabee, Mildred Breiland, Vera Johnson, June Tangen, Leona Carlson, Deloris Scott, Margaret Nelson, Doris Fredrickson. **ROW 2:** Marie Lechner, Virgie Olson, Elaine Johnson, Eunice Boraas, Eleanore Niemi, Beulah Foss, Vivian Stroman, Mildred Bunnell, Esther Hanson, Helen Hawley, Elsie Ann Hougen, Norma Morland. **ROW 3:** Ragnhild Roisum, Elsie Johnson, Norma Larson, Margaret Blomberg, Wanda Dovre, Elaine Steen, Doris Kloss, Vernice Greenhagen, Helen Youngner, Elaine Nyhus, Marjorie Nodde, Berniece Anderson. **ROW 4:** Carolyn Vaughan, Helen Dickmeyer, Lorraine Gundershaug, Shirley Walleen, Adelaide Manthei, Dorothy Oetting, Alice Binger, Ruby Breiland, Irene Moe, June Card, Mae Kolstad, Alyce Erickson, Alice Zellgert.

Bottom Picture—ROW 1: Muriel Barsness, Vivian Junglaus, Dorothy Stark, Dr. H. P. Lohrman, Arnold Dahle, Argyle Bersie, Josephine Snakenberg, Helen Bollum, Dorothy Ann Carlson. **ROW 2:** Ruby Peterson, Betty Polman, Phyllis Bagley, Walter Swanson, Margaret Ann Bengtson, Ardis Remquist, Bernil Hauswedell, Miss F. Gunlaugson, Miss I. Helgen. **ROW 3:** Martha Laine, Mary Stark, Elda Peterson, Marian Sjolín, Hilda Penning, Mildred Faust, Verna Steffen, Helen Rodgers, Anna Vegdahl, Art Holmgren. **ROW 4:** Elna Frank, Mabel Walseth, Mabel Lalim, Elizabeth Erickson, Joyce Sayer, Mary M. Hoglund, Orvilla Brunskill, Dolores Johnson, Judy Koster, Corrine Velde, Beverly Aubrecht, Lois J. Nissen, Phyllis Olson.

LUTHERAN STUDENTS ASSOCIATION: The Lutheran Students Association carried on its usual devotional and social program. Highlighting the year was the annual banquet at Lawrence Hall with the University Farm Campus students as guests and their adviser, Rev. Carl Lundquist, as speaker. The national L. S. A. president was also present. Mildred Breiland and Alice Binger were the two representatives to the Regional Conference held at the University.

Arnold Dahle, the local president, left during the year to join the armed forces. Other prominent L. S. A.'ers leaving during the year for the service were Walter Swanson, Argyle Bersie, Art Holmgren, and Walter Fischer.

Officers elected this spring were Margaret Ann Bengtson, president; Wanda Dovre, vice-president; Joyce Sayer, secretary; and Elaine Nyhus, treasurer. Miss Helgen, Miss Gunlaugson, and Dr. Lohrman are the advisers. Miss Hansen, who was an adviser, left during the year to accept a civil service appointment at Ancon, Panama.



Newman Club—Top Picture—ROW 1: Kathleen Wasche, Dorothy Carlin, Dolores Kalkman, Mary J. Stelzig, Gene Bayle, Susan Begin, Dorothy Swedzinski, JoAnn Barthelmy. **ROW 2:** Marian McGee, Mary L. Willard, Evangeline Speier, Lorraine Visser, Betty Ann Beerling, Mary M. Prasch, Mary Lou Brouillard, Rita M. Hoffman, Dorothy Yungers, Dorothy Robertson, Delores Oster. **ROW 3:** Margaret Fields, Mary Snyder, Beulah Hahle, Margaret Czeck, Peggy O'Neill, Lucille Peschl, Irene Stachowski, Irene Chmielewski, Rosemary Gabriel, Alberta Prasch, Helen Swedzinski. **ROW 4:** Geraldine Breher, Margaret A. Myers, Shirley Hajicek, Theresa Mattaini, Eileen Becker, Dorothy Paal, Helen Scully, Rosemary Becker, Georgia Hajicek, Mary J. Super, Lorraine Ohotto.



Bottom Picture—ROW 1: James McCarty, Francille Luken, Richard O'Fallon, Miss P. Penning, Gertrude Beacom, Ray Ringer, Joyce Kane, Bernard Woessner. **ROW 2:** Ursula Breher, Margaret Van Offeren, Jeanne Sauer, Edna Welz, Helen Kelly, Mary Hiltner, Alan Pettit, Theresa Renner, Rose Marie Tintes, Florence Blake, Mildred Revering. **ROW 3:** Myron Kennedy, Ruth Mahon, Mary Ann Solinger, Eleanor Porwoll, Cecil Haas, Florence Czeck, Connie Wurst, Helen Harakel, Adeline Czeck, Rose Vasaly, Genevieve Flint, Ruth Bautch. **ROW 4:** Alphonse Wiechmann, Leon Schertler, Priscilla Loecken, Elizabeth Strauss, Ethel Jo Gruber, Elaine Kropp, Betty Ann Bruder, Genevieve Lehn, Laurianna Schulte, Ray Kimler, James Durrenberger.

NEWMAN CLUB: Beginning the year with a mixer for all Catholic students, the Newman Club continued a busy program which included speeches by Father Bielejeski, Bishop Busch, Father Conrad, and Bishop Bartholome. The customary Communion Breakfasts were held at the Cathedral High School. Newman Club members brought gifts and candy to the children at the Orphanage when they entertained at the annual Christmas party in December. Other social functions were the club's sleighride and a Sunday breakfast picnic.

Officers for the year have been Myron Kennedy, president; Kathleen Wasche, program chairman; Theresa Renner, secretary; Marjorie Halpin, treasurer; and Ray Ringer, historian. Miss Penning and Mr. Lynch are the advisers.

MUSIC CLUB: All majors and minors in music education are eligible for membership in the Music Club. Two of the most interesting programs of the year were the discussion of the place of music in a world at war and a concert of American music by Miss Greim.

Carroll Waller, president; Margery Wollam, program chairman; Gertrude Gehrenbeck, secretary; and Mildred Rogosheske, treasurer; were the officers for the year. Mr. Riggs is the club's adviser.

CECILIANS: One highlight of the year for the Cecilian Glee Club was their radio broadcast of patriotic songs. Songs of a similar nature were sung by club members at the Red Cross convocation and at the Victory Festival at the Technical High School.

Cecilians first appearance this year was at a convocation program in the fall. They next took part in the annual Christmas community sing. In May the group presented a concert and cantata.

Officers for the year have been: Ardith Burrell, president; Peggy Crust, treasurer; Myrtle Varner, pianist. Miss Carlsen is the director.

Music Club—ROW 1: Art Campbell, Margery Wollam, Georgia McKay, Gertrude Gehrenbeck, Luella Richter, Miss M. Carlsen, Anne Ervin, Carroll Waller. **ROW 2:** Mary Ash, Lucille Hartfiel, Margaret Ann Bengtson, Dorothy Brown, Doris Smith, Marian Sjolín, **ROW 3:** Dorothy Yungers, Shirley Walleen, Dolores Mieske, Gale Campbell, Larry Brammer, Echo Anderson, Mary Jane Heimann, Helen Dickmeyer, Ruth Vigren.

Cecilians—ROW 1: Shirley Hammond, Ragnhild Roisum, Adeline Thompson, Ardith Burrell, Miss M. Carlsen, Francille Luken, Myrtle Varner, Irene Moe. **ROW 2:** Elizabeth Strauss, Echo Anderson, Dolores Johnson, Shirley Brown, Virgie Olson, Elaine Strande, Norma Morland, Rose Vasaly, Lorraine Gundershaug, Rita Hoffmann, Vivian Junglaus. **ROW 3:** Colette Kipp, Norma Larson, Margery Wollam, Mary Ash, Betty Polman, Dorothy Thomas, LaVerne Steinke, June Larson, Dorothy Andrews, Kay Kaercher, Helen Kelly, Hermina Schleper. **ROW 4:** Mae Kolstad, Margaret Blomberg, Wanda Dovre, Margaret Ann Myers, Janet Johnson, Mary Hoglund, Shirley Walleen, Juanita Johnson, Elaine Steen, Theresa Mattaini, Carmen Sheldon, Beverly Aubrecht, Eileen Thompson.



BAND: Playing at all football and basketball games, the T. C. Band did much to keep up our "civilian morale." A broadcast over KFAM and a joint concert with the Technical High School Band were the important events of the year. The T. C. Band, as well as other musical organizations in the city, played many times during the year as draftees left St. Cloud for Fort Snelling.

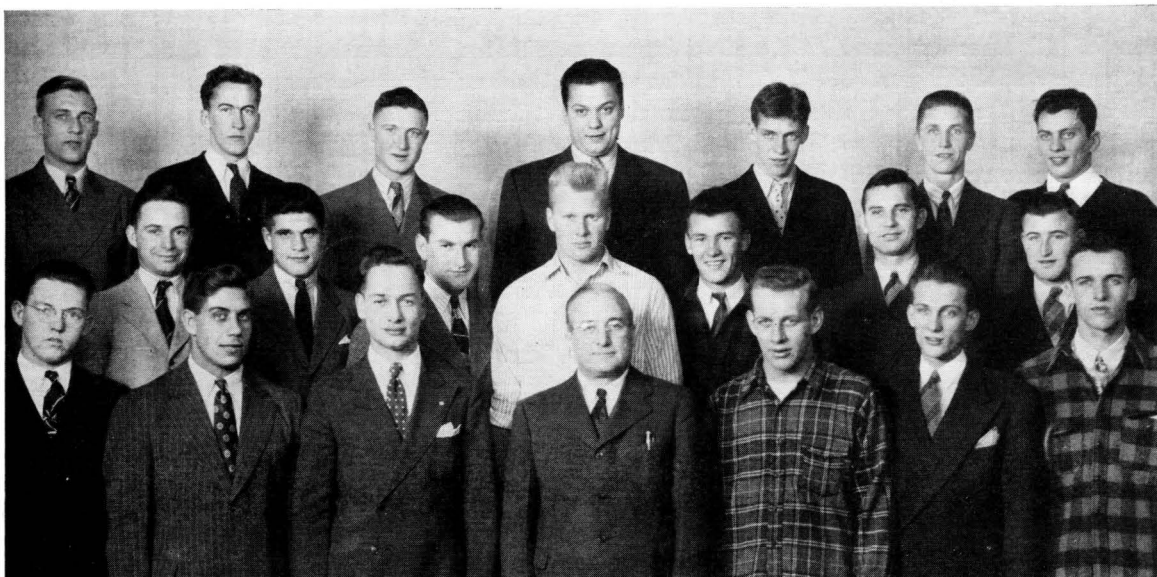
Officers for the year have been James Ostensoe, president; Marion Sjolín, vice-president; and Adrian Johnson, secretary-treasurer. Mr. Riggs is the director.

GIRLS' CHOIR: A program for the American Legion and the Riverview PTA began an active year for the Girls' Choir. Some of the most memorable events of 1942-43 include participation in the community sing and in the annual Christmas concert, a program on the KFAM Concert Hour Series, and the annual spring concert. Each member of the Choir contributed to the Victory Book Campaign.

Officers for the year were Marion Sjolín, president; Mary Jane Heimann, vice-president; Frances Bickham, secretary-treasurer; Dorothy Swedzinski, librarian; Jane West, historian; Margaret Ann Bengtson, accompanist. Mrs. Huls is the director.

Girls' Choir—ROW 1: Doris Smith, Winnifred Headland, Susan Begin, Mrs. Huls, Marian Sjolín, Jeanne Carpenter, Margaret Ann Bengtson, Ruth Vigren. **ROW 2:** Florence Roberts, Ruth Pramann, Betty Ann Beerling, Helen Hawley, Elsie Hougen, Mary Prash, Norma Ordahl, Lucille Hartfiel, Jane West. **ROW 3:** Phyllis Glaser, Marjorie Christle, Vivian Fall, Janette Almer, Jeanne Talbot, Ursula Breher, Connie Binnie, Helen Holmgren, Elsie Johnson. **ROW 4:** Lorraine Visser, Helen Dickmeyer, Carolyn Vaughan, Joan Buethe, Shirley Hammond, Frances Bickham, Dorothy Swedzinski, Mary Jane Heimann.





Lettermen—ROW 1: Bernard Ilertsen, Kenneth Zakariasen, Jim Hills, Mr. J. Cochrane, Bud Kessler, Edward Eggers, Rueben Lieske. **ROW 2:** Ambrose Kramer, Louis Weinstein, Al Banks, Ralph Pearson, James Warren, John Lane, Jack Conley. **ROW 3:** Bob Gray, Willard Walters, Lloyd Lehn, Guido Detragiache, Earl Seaton, George Sycks, Jim Roes.

WAA—ROW 1: Joan Stai, Mary Ash, Shirley Brown, Ruth Osgood, Cecil Haas, Margie Gosch, Shirley Atkinson, Avis Meers. **ROW 2:** Eleanor Porwoll, Shirley Hajicek, Mildred Breiland, Mildred Frank, Dorothy Oetting, Gladys Franzen, Olive Miller, Norma Nelson, Uarda Bacchus, Claire Warweg.

LETTERMEN: Carrying on extensive correspondence with the alumni of the club who are now in the armed forces has kept the members of the Lettermen's Club busy. They also carried on their regular program for the promotion of athletics in the college. The annual initiation party served as a farewell party for the members who were leaving for the service.

Jim Roes served as president of the club; Louis Filippi, vice-president; Al Banks, secretary-treasurer. Advisers are Mr. Kasch, Mr. Cochrane, and Mr. Colletti.

WAA: Initiating a physical fitness hour and a drill corps, the Women's Athletics Association did much to further the physical fitness campaign. They also contributed two books for service men.

Organizing a sports' program for all women of the college was the main objective of the club. They invited all college women to the WAA breakfast during orientation week, and sponsored play nights for various groups.

Officers for the year have been Norma Nelson, president; Olive Miller, vice-president; Gladys Franzen, secretary-treasurer. Miss Case and Miss Fabricius are the association's advisers.



Women's Life Saving Corps—ROW 1: Dolores Hunt, LaVone Bergstrom, Frances Bickham, Dorothy Andrews, Mary A. LeRoy. ROW 2: Vivian Fall, Ivah Danielson, June Larson, Mildred Robbins, Delores Oster, Mary Petrich.

Splash Club—Jim Roes, Larry Brammer, Willard Walters, Richard Hannula, John Lane, Marlin McNeal, Bob Gray, Mr. A. F. Brainard.

WOMEN'S LIFE SAVING CORPS: Recreational swimming was advocated by the Women's Life Saving Corps as part of the physical fitness program. The Corps sponsored the first co-educational swimming hours at the college as one recreation feature of the Thanksgiving party.

Renewing Senior Life Saving and passing the Red Cross Water Safety Test in order to receive instructors' badges kept members of the Corps busy during the spring quarter.

Officers for the year were Mildred Robbins, president; and Dolores Hunt, secretary-treasurer. Miss Case and Miss Fabricius are the advisers.

SPLASH CLUB: Purposes of the men's Splash Club have been to promote interest in swimming and to instruct men of the campus in the principles of water safety. The organization has sought to stress the importance of men's life saving activities and recreational swimming as an aid in keeping physically fit.

Activities, which in more normal years have been sponsored by the club, were cancelled because of the organization's small membership. Officers for 1943 were: John Lane, president; Larry Brammer, vice-president; Willard Walters, secretary; Bob Gray, treasurer. Dr. A. F. Brainard is the club's adviser.





Players Club—ROW 1: Wanda Dovre, Nelma Taipole, Florence Roberts, Helen Holmgren, Shirley Walleen, Myrna Erickson, Phyllis Bagley. ROW 2: Leon Schertler, Edna Friberg, Carl Cochrane, Mildred Bunnell, Marjorie Christle, Berniece Anderson, William Potter. ROW 3: Dorothy Carlson, Alice Binger, Ethel Gruber, Muriel Barsness, Leona Simpson, Elaine Steen, Theresa Mattaini, June Tangen.



English Club—ROW 1: Lillian Anshus, Jane Paulson, Mary Jane Stelzig, Kathleen Wasche, Elaine Johnson, Dorothy Magnuson. ROW 2: Mildred Bertram, Theresa Mattaini, Alice Binger, June Tangen, Shirley Scheerer, Carol Stewart, Dorothy Yungers.

PLAYERS CLUB: Group participation in pantomimes, reviews of plays, presentation of short skits and plays, and the study of make-up comprised the program of the Players Club for the year. The group contributed "Mantle's Plays" to the Victory Book Campaign.

Officers of the club were Alice Binger, president; Berniece Anderson, secretary; Leona Simpson, treasurer. Dr. Kaump, who is now a lieutenant of the SPARS at Hunter College, New York, was the adviser. She was succeeded by Miss Cooke and then by Dr. Griffin.

ENGLISH CLUB: Programs for the English Club, a group of English majors and minors, included talks by Miss Anne Simley of Hamline University on "The Monologue in Literature," Miss Alma Penrose of the St. Cloud Public Library on "War Books," Dr. William Griffin on "Censorship in England," and Mrs. Carl Gulbrandson on "Christina Rossetti." English Club members contributed *Robert Frost's Poems* to the Victory Book Campaign.

Because Bernard Schepers was called into the service, Mildred Bertram stepped from the vice-presidency into the presidency. Mary Jane Stelzig was secretary; Bettyann Chipman, treasurer; and Jane Paulson, historian. Dr. Griffin is the adviser.



Editorial Staff—ROW 1: Anne Steman, Virginia Botz, Jane Paulson, Nancy Nelson, Helen Sauer, Arleen Johnson, Dorothy Magnuson, Miss Helen Hill. ROW 2: Elaine Johnson, Lucille Hartfiel, Rosemary Gruber, Constance Brainard, Connie Wurst, Imogene Bretz, Muriel Barsness, Shirley Hammond. ROW 3: Jack Maloney, Alice Binger, Mildred Bertram, Ethel Jo Gruber, Joan Buethe, Claire Warweg, June Tangen, Arthur Barsness.

Business Staff—ROW 1: Lucille Peschl, Beverly Ann Johnson, Elsie Ann Hougen, Betty Ann Beerling, Cecil Haas, Kay Kaercher. ROW 2: Carolyn Vaughan, Helen Dickmeyer, Lorraine Gundershaug, Eileen Korpi, Janet Helstrom, Elaine Kropp.

CHRONICLE: Letters, dozens of letters, letters from camps all over the United States, letters from the front. "Thanks for the *Chronicle*—you have no idea how welcome news is from home. We practically memorize even the ads."

From reporters covering their beats to the circulation staff addressing papers, every one had in the back of his mind the picture of a man in khaki or blue reading the *Chronicle*. The staff knew the paper would not only help stiffen morale at home, but would give a few minutes of pleasure to the fellows who are ready to give everything. It was this vision that inspired them to earn the All-American rating awarded by the Associated Collegiate Press.

Advised by Miss Helen Hill, the *Chronicle* was edited by Arthur Barsness with Rosemary Gruber as associate editor. Lucille Peschl was business manager and Beverly Johnson, associate business manager.



Talahi—ROW 1: Dorothy Magnuson, Cecil Haas, Helen Sauer, Richard O'Fallon, Mary Lee Smith, Dr. H. P. Lohrman, Georgia McKay, Lois Nissen, Vivian Fall. ROW 2: Constance Brainard, Joan Stai, Marion Sivertson, Elaine Johnson, Virginia Botz, Nelma Taipole, Nancy Nelson, Jane West, Dorothy Yongers. ROW 3: Jack Maloney, Mildred Robbins, Joyce Stepanek, Eileen Korpi, Muriel Barsness, Betty Benson, Shirley Hammond, Leon Schertler, Mildred Bertram.

TALAHİ: Budget cut in half, and a staff that changed as fast as the war news slowed down production and made it impossible for us to give you a *Talahi* as big as last year's. Joan Stai assumed the duties of business manager when Robert Post entered the Army. Other staff members were Mary Lee Smith, editor; Elaine Johnson, associate editor; Leon Schertler, photographer; Virginia Botz, Jane West, and Dick O'Fallon, class editors; Mildred Bertram and Mildred Breiland, copy editors. Muriel Barsness became organizations editor as well as freshman class editor when Dorothy Magnuson left school in December.

SCIENCE CLUB: Reports on recent advances in science were given at the monthly meetings of the Science Club this year. Instead of its annual open house, the club presented a convocation program. As their part in the Victory Book Campaign, club members bought a year's subscription to the Science Digest.

Officers for the year were: Howard Hanson, president; Thayne Broin, secretary-treasurer; Philip Youngner, LeRoy Hoff, Quentin Ruehle, program chairmen. Dr. Brundage is the adviser.

A smaller number of science majors and minors in college made a large membership an impossibility but the club prospered in spite of its decreased size.

Science Club—ROW 1: Joe Ringer, John Jurkovich, Philip Youngner, Dr. D. Brundage. ROW 2: Quentin Ruehle, Ardith Burrell, Marie Lechner, Theresa Mattaini, LeRoy Hoff, Howard Hanson.





Art Club—ROW 1: Edith Emmel, Nancy Nelson, Helen Sauer, Martha Holmgren, Miss P. Penning, Vivian Henneman, Bertha Robbin, Frances Bickham. ROW 2: Virginia Botz, Beatrice Zakariasen, Dorothy Brown, Elaine Kropp, Ethel Gruber, Eleanor Schultz, Eileen Korpi, Carol Pohl.

Camera Craft—ROW 1: Leon Schertler, Art Holmgren, Carl Cochrane, Mr. P. G. Rawland. ROW 2: Geraldine Breher, Connie Wurst, Elna Frank, Mary Snyder, Carol Pohl.

ART CLUB: Donating defense posters was one of the important contributions of the Art Club to the war activities. The poster bureau under the direction of Helen Sauer continued to meet the needs of the various organizations on the campus. Programs included talks by Mr. Russell Roe of Fandels, Mr. Otto Dahlmann, director of art in the city schools, and Miss Frances Bickham.

Officers for the year were Dorothy Brown, president; Bertha Robbin, vice-president; Edith Emmel, secretary; Eileen Korpi, treasurer; Beatrice Zakariasen, historian. Miss Penning is the adviser.

CAMERA CRAFT: Learning to take better pictures was the aim of every Camera Craft Club member. They spent many enjoyable hours at their "hike," meetings when they roamed the campus and countryside looking for good "subjects."

Officers for the year included Art Holmgren, president; Leon Schertler, vice-president and *Talahi* photographer; Geraldine Breher, secretary; Kathleen Wasche, treasurer; Carl Cochrane, parliamentarian. Mr. Rawland is the adviser.



League of Women Voters—ROW 1: Miss A. Larson, Helen Sauer, Doris Kloss, Mildred Bunnell, Minnie Krueger, Joan Pratschner, Miss D. Perry. ROW 2: Dolores Hunt, Venette Gustafson, Anita Sabetti, Ruth Nash, Eunice Boraas, Phyllis Olson, Shirley Scheerer, Ragnhild Roisum.

LEAGUE OF WOMEN VOTERS: "Forced savings plan", "War Leaders of United Nations", "An American Reaction to the Present World Crisis", and "American Family in the War Effort" were some of the topics presented at meetings of the League of Women Voters. The League contributed two books to the Victory Book Campaign. Its largest contribution was the encouragement in building an educated citizenry it gave to the members of the group and to college students.

Presidents for the year have been Phyllis Olson, Anita Sabetti, and Ruth Nash. Miss Perry and Miss Larson are the advisers.

FUTURE TEACHERS OF AMERICA: The presentation of two convocation programs, one during American Education Week and the other on Susan B. Anthony Day, were two contributions of the Future Teachers of America. Programs at regular meetings included talks and panels on P. T. A., teachers' impressions of teaching, application letters, applying for a position, and the personal interview. The Conservation Committee of the War Council was sponsored by the club.

Officers for the year were Georgia McKay, president; Leon Schertler, vice-president; Mary Hiltner, secretary; Lester Drager, treasurer. Mr. Jerde and Mr. Perkins are the advisers.

FTA—ROW 1: Mr. O. J. Jerde, Lorraine Leffingwell, Catherine Mack, Arlene Wenker, Mary Hiltner, Georgia McKay, Helen Swedzinski, Dorothy Yungers, Eunice Boraas, Alice Gardner, Lester Drager. ROW 2: Alyce Mooney, Leona Van Gerpen, Bernil Hauswedell, Donna Sigfrid, Marjorie Nodsle, Joan Stai, Venette Gustafson, Ragnhild Roisum, Edna Friberg. ROW 3: Alphonse Wiechmann, Elaine Johnson, Alyce Erickson, Mae Kolstad, Dorothy Stark, Dorothy Swedzinski, Helen Olson, Janet Johnson, Josephine Snakenberg, Marion Sivertson, Leon Schertler.





Rangers—ROW 1: John Jurkovich, Guido Detragiache, Sam Malkovich, Dr. A. F. Brainard, Joe Burich, Miles Vukson. ROW 2: Nancy Nelson, Mary Kerzie, Janet Helstrom, June Larson, Shirley Brown, Anita Sabetti, Nelma Taipole, Myrna Erickson, Gena Mancini. ROW 3: Theresa Mattaini, Lorraine Krueger, Eileen Korpi, Mildred Robbins, Gladys Franzen, Jennie Bitsianes, Grace Kalibabky, Elna Frank, Gallerane Vitali.

Yo-Hi Board—Jeanne Carpenter, Ardelle Chase, Miss Frances Gunlaugson, Miss Eleanore Schulte, Jeanette Rolfes, Vivian Henneman.

RANGERS: The aim of the Ranger Club is to promote good sportsmanship among the students representing the three ranges. Rangers presented the skit "The Ink Spots" at the U. S. O. dance held at Eastman Hall and had charge of the homecoming bonfire. They also contributed a book to the Victory Book Campaign.

Officers were Miles Vukson, president; Sam Malkovich, vice-president; Gladys Franzen, secretary; John Jurkovich, treasurer; Janet Helstrom, activity chairman; and James Warren, student council representative. Dr. A. F. Brainard is the adviser.

YO-HI: This year the Yo-Hi organization continued to be a unifying force for all off-campus women. Good grooming and travel were the topics for the fall and winter programs. During the spring, the meetings were turned over to the making of surgical dressings. "This Above All" was contributed by the organization to the Victory Book Campaign.

Officers for the year have been Vivian Henneman, president; Jeanne Carpenter, vice-president; Ruth Guslander, secretary-treasurer; Joyce Kane, historian; and Mary Prash, parliamentarian. Miss Gunlaugson and Miss Schulte are the advisers.

INTER-SOCIETY BOARD: Activities of the Inter-Society Board depend upon the needs of the women's societies on the campus. The Board serves as a clearing house, providing an administrative channel for the conducting of necessary business relating to all societies. Officers of the Board, which has urged all societies to direct their programs to the war effort, are: Ivah Danielson, president; Edith Emmel, vice-president; Gladys Schmidt, secretary. Mrs. Garvey is the adviser.



ATHENAEUM: Athenaeum's theme for the year's study program was South American culture. Much was learned about South American music, literature, art, and customs through reports and book reviews. Other activities were the annual homecoming breakfast for the Athenaeum alumnae, the Christmas party, the initiation ceremony and dinner at the Mohr Guest House, and the theater-dinner party in the spring. Miss Lela Stanley and Miss Helen Bottum are the society's advisers.

Inter-Society Board—Edith Emmel, Ivah Danielson, Doris Smith, Mrs. Beth Porter Garvey, Beatrice Miller, Venette Gustafson, Gladys Schmidt.

Athenaeum—**ROW 1:** Ruth Pramann, Ruth Guslander, Alice Gardner, Mildred Bunnell, Betty Polman, Mildred Breiland, Miss Lela Stanley, Rose Marie Tintes, Arleen Johnson. **ROW 2:** Florence Ensley, Echo Anderson, Wanda Dovre, Betty Ann Beerling, Mary Jane Stelzig, Rosemary Gabriel, Ruby Breiland, Shirley Scheerer, Edith Emmel, Myrtle Marie Varner.



MINERVA: The study of China, Russia, and Japan has been the theme of Minerva meeting programs. Book reviews and talks on the music, art, customs, and geography of the three countries were given. Surgical dressings have been made each week at the Lewis home.

Officers have been Eileen Greene, president; Priscilla Harrom, vice-president; Geraldine Breher, secretary; Elaine Peterson, treasurer; Margaret Ann Bengtson, historian; and Ivah Danielson, inter-society representative. Miss Hill and Mrs. Swan are the advisers.

PHOTOZETEANS: Photozetean means "seekers after light" and pledges of the society must meet high scholarship requirements and strive to maintain their standing after they are Photozeteans. This year, they have devoted their program to timely topics of the war, red cross sewing and surgical dressing.

Officers during the spring quarter were Jennie Bitsianes, president; Hilda Penning, vice-president; Eunice Boraas, secretary; Jane Paulson, treasurer. Miss Moscrip and Miss Williams are the advisers.

Minerva—ROW 1: Lois Bachman, Muriel Barsness, Joan Bueth, Ethel Gruber, Mrs. N. Swan, Miss H. Hill, Anne Ervin, Doris M. Surface, Mary Lee Smith. **ROW 2:** Rosemary Gruber, Josephine Gorton, Constance Brainard, Priscilla Harrom, Eleanore Niemi, Connie Wurst, Elsie Hougen, Ivah Danielson, Beulah Foss, Margaret A. Bengtson, Imogene Bretz. **ROW 3:** Eileen Greene, Helen Sauer, Ruth Vigren, Elaine Peterson, Virginia Botz, Charlotte Henningsgaard, Dolores Johnson, Vivian Fall, Shirley Hammond, Ursula Breher, Jane West, Geraldine Breher.

Photozeteans—ROW 1: Leona Simpson, June Tangen, Gene Bayle, Hilda Penning, Theresa Mattaini. **ROW 2:** Elaine Johnson, Eileen Korpi, Ruth Nash, Venette Gustafson, Lorraine Leffingwell, Janet Helstrom. **ROW 3:** Jane Paulson, Bettyann Chipman, Shirley Brown, Jennie Bitsianes, Lorraine Krueger, Eunice Boraas, Gena Mancini.



STORY TELLERS: Story Tellers took complete charge of the sale of war stamps and bonds on the campus. During the winter quarter they discontinued regular meetings and met once a week at the Red Cross center to make surgical dressings. The original program was built on the initials of the club—S. T. C. It included Social Street Scenes, Telling Tales, and Conversations and Confessions.

Officers during the spring quarter were Frances Bickham, president; Susan Begin, vice-president; Beverly Aubrecht, secretary; Eleanor Porwoll, treasurer. Miss Cadwell and Miss Budge are the advisers.

THALIA: Under the leadership of their program chairman, Mildred Geistfeld, the Thalia society enjoyed a program of talks on Physical Fitness, WAAC's, WAVE's, and SPAR's, Gifts for Servicemen, and the USO. Once a week society members made surgical dressings for the Red Cross.

Spring quarter officers were Dorothy Stark, president; Delorus Nelson, vice-president; Janette Almer, secretary; Carol Ederhoff, treasurer. Miss Carlsen and Miss Camp are the advisers.

Story Tellers—ROW 1: Rebecca Pond, Frances Bickham, Eleanor Porwoll, Beverly Aubrecht, Lorraine Cottle, Alyce Erickson, Susan Begin. **ROW 2:** Nelma Taipole, Beatrice Miller, Phyllis Glaser, Betty Barta, Marjorie Nodsle, Rose Vasaly, Lorraine Gundershaug, Gladys Franzen. **ROW 3:** Elizabeth Moore, Dorothy Thomas, Myrna Erickson, Cecil Haas, Bertha Robbin, Vivian Henneman, Dorothy Yungers, Martha Holmgren. **ROW 4:** Alice Cook, Mary E. McKenzie, Mildred Robbins, Rae Robbins, Mary M. Hoglund, Orvilla Brunskill, Virginia Moeller, Mildred Bertram.

Thalia—ROW 1: Olive Miller, Alice Binger, Dorothy Stark, LaVone Bergstrom, Phyllis Ravenscraft, Miss B. Camp. **ROW 2:** Mary Stark, Adelaide Manthei, Vivian Larrabee, Doris Smith, Mildred Geistfeld, Martha Soltis, Carol Ederhoff. **ROW 3:** Shirley Carlson, Florence Roberts, Janette Almer, Shirley Atkinson, Phyllis Bagley, Anita Sabetti, Carol Stewart. **ROW 4:** Jeanne Talbot, Dorothy Brown, Ione Peterson, Winnifred Headland, June Card, Corinne Tideman, Delorus Nelson, Elna Frank, Betty Michela.





Waverly—ROW 1: Dolores Mieske, Jeanne Carpenter, Vera Johnson, Miss Grace Nugent, Miss Ivah Green, Jean Anderson, Mary Snyder. ROW 2: Florence Blake, Beverly Ann Johnson, Lucille Peschl, Ethel Sivinski, Marjorie Christle, Helen Holmgren, Marion Sivertson. ROW 3: Marie Lechner, Phyllis Olson, Gladys Schmidt, Helen Kelly, Maida Eby, Rachel Lee Cummings, Beulah Hahle, Doris Kloss.

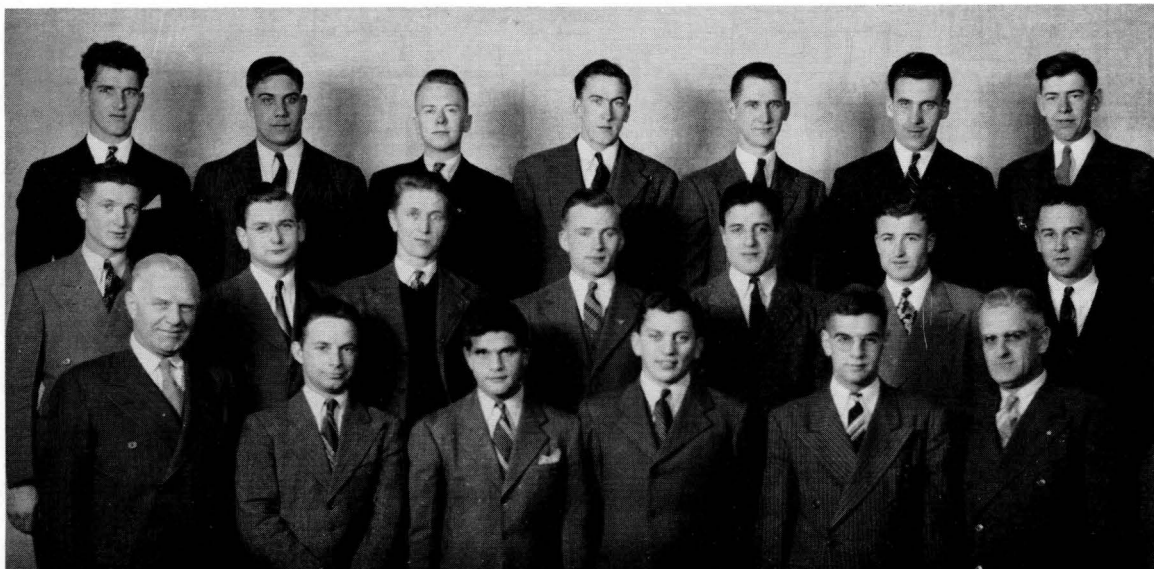
WAVERLY: This year's meetings of the Waverly Society have been devoted to studying South America to learn about the international relationship between South America and the United States and making surgical dressings at one of the local Red Cross stations.

Officers for the spring quarter were Doris Kloss, president; Mary Jane Snyder, vice-president; Maida Eby, secretary; Florence Blake, treasurer; Helen Kelly, publicity chairman; Marie Lechner, historian; Marion Sivertson, parliamentarian; and Ardith Burrell, program chairman. Miss Green and Miss Nugent are the society's advisers.

AL SIRATS: Many members of the Al Sirat fraternity did not return to school this year. Many who did return heard the firm voice of Uncle Sam and left school mid-year. Decreased membership numbers made it impossible for the fellows to be as active on the campus as they have been. However, a Talahi Revu skit was presented and the boys gave a few memorable parties.

Officers for the year were Willard Walters, president; Jack Conley, vice-president; Marlin McNeal, secretary; Earl Seaton, treasurer; George Sycks, sergeant-at-arms; and Lloyd Lehn, historian. Dr. Clugston and Mr. Jerde are the Al Sirat's advisers.

Al Sirats—ROW 1: Mr. O. J. Jerde, Ambrose Kramer, Louis Weinstein, Jim Roes, Henry Hambrecht, Dr. H. A. Clugston. ROW 2: Lloyd Lehn, Bernard Woessner, George Sycks, Walter Swanson, Louis Filippi, Jack Conley, Marlin McNeal. ROW 3: Joe Burich, Kenneth Zakariasen, Arthur Barsness, Willard Walters, Denis Lehn, Sam Malkovich, Carroll Waller.



WAR ACTIVITIES



War Council—ROW 1: Helen Sauer, Marie Lechner, Margaret Ann Bengtson, Avis Meers, Ruth Nash, Dorothy Yungers. ROW 2: Anne Ervin, Georgia McKay, Cecil Haas, Betty Benson, Dorothy Brown, Ursula Breher. ROW 3: June Tangen, Orvilla Brunskill, Ambrose Kramer, Norma Nelson, Elna Frank, John Lane, Elaine Johnson.

WAR ACTIVITIES: Led by Dick O'Fallon and his successor, June Tangen, and advised by Mrs. Beth Porter Garvey, the War Activities Committee has functioned actively through various committees such as Civilian Morale, Conservation, Bonds and Stamps Sale, War Relief, Physical Fitness, Red Cross, Civilian Protection, and Victory Gardens. Forums, faculty panels, and speeches have been given under the civilian morale program. The Victory Book Campaign was sponsored; donations to China, the Salvation Army, U. S. O. and Red Cross were made through the work of the War Relief committee; physical fitness for both men and women received new emphasis; and organizations were urged to devote their meetings to war work such as sewing for the Red Cross and making surgical dressings.

This committee has served well to coordinate all existing campus groups into one working unit with one common purpose—victory and lasting peace.

Members of the War Information Committee were kept busy filing information for the use of college students and community groups.

Dorothy Yungers was elected Campus Victory queen by Bond and Stamp buyers.





The Talahi

STATE TEACHERS COLLEGE
St. Cloud, - Minnesota

Dear Joe:

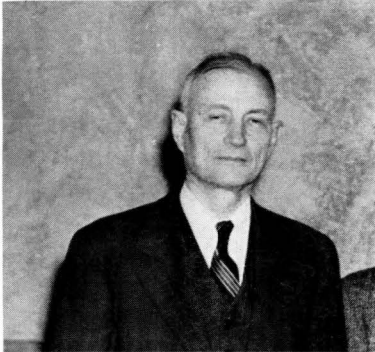
You might say the whole college united in one great group to form a "War Activities" committee. Our one ever present purpose was to do our best to get you back into the civilian uniform in record breaking time. Club work, social functions and even classwork changed to include this new purpose. Faculty members planned an accelerated curriculum. Every department revised and reorganized.

In the following pages is the story of a changing faculty organization and the newly emphasized "extra-curriculars" in which we found an outlet to satisfy our talents and our energies in worthwhile ways.

Yours,

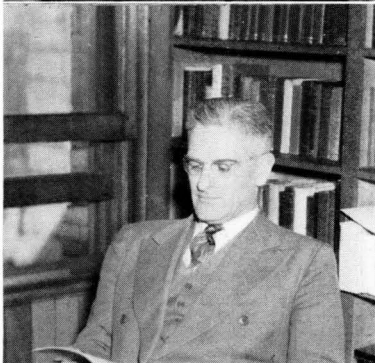
FACULTY

Salute To The Faculty



|| **MR. D. S. BRAINARD**

Acting President
Director of Placement



|| **DR. H. A. CLUGSTON**

Dean of Administration



|| **MR. F. E. PERKINS**

Co-ordinator

When President George A. Selke was called to public service because of the war emergency, Mr. D. S. Brainard became acting president for the duration. In addition to this huge responsibility, he is still carrying on his duties as director of the Placement Bureau.

Dr. H. A. Clugston was appointed Dean of Administration during the early winter. When a contingent of the Army Air Corps became stationed at the college, he also assumed the duties of Academic Dean for them. Dr. Clugston still teaches his regular psychology courses.

Mr. F. E. Perkins turned over his duties of supervising cadet teachers and of teaching Secondary Technique to Miss Mabel Paull in order to devote his time to being official Co-ordinator between the Army Air Corps and the college. He also instructs two Army Air Corps classes of geography.

These three men who have assumed positions of new administrative responsibility deserve a special salute—a salute of respect from an admiring student body.

For Distinguished Service

MUSIC

Emphasis was on the recreational rather than on the artistic side of the music played by the band and the orchestra this year. A considerable loss in the number of participants made it impossible to attain a degree of perfection within either of the two groups.

Miss Myrl Carlsen, acting head of the music department in the absence of Mr. Harvey Waugh, is director of the Cecilians and secretary of the St. Cloud Civic and Commerce Music Organization.

Mr. Riggs, secretary-treasurer of the Minnesota Music Educational Association, has complete charge of the band and the orchestra. Throughout the year, the orchestra has appeared in joint and single public Sunday concerts with the Technical High School orchestra at the Technical High School auditorium. Their programs contained a variety of numbers, both classical and popular.

Both Miss Helen Greim and Mrs. Helen Steen Huls teach private lessons in voice and piano. Directing the Girls' Choir is an additional undertaking of Mrs. Huls. The Choir has appeared with other musical groups of this city in the Sunday public concerts at the Technical High School auditorium, and in April the girls presented their annual Girls' Choir concert. In May Miss Margaret Ludwig, who supervised the intermediate and junior high school music activities of Riverview in addition to teaching college classes, joined the war workers in Washington, D. C.

Efficient continuation of the Choral Club was not possible, so the organization rested on last year's laurels and old members pointed to the days when that organization won high honors at the Milwaukee Convention. The Choral Club was formerly under the direction of Mr. Harvey Waugh who is now employing his talents as one of the directors of the choir at the Great Lakes Naval Training Station.

Music department faculty members are: Back row—Ronald Riggs, Helen Steen Huls, Myrl Carlsen. Front row—Helen Greim, Margaret Ludwig.

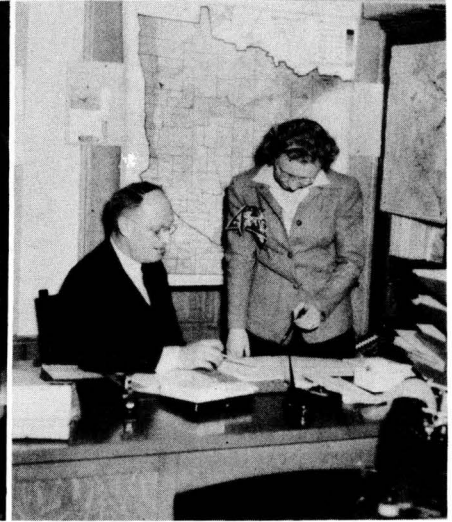
Miss Greim spends many hours giving college students private piano lessons.



BUSINESS



Dr. C. J. Folkerts and Mary Ferro at the farewell tea in honor of Miss Ferro.



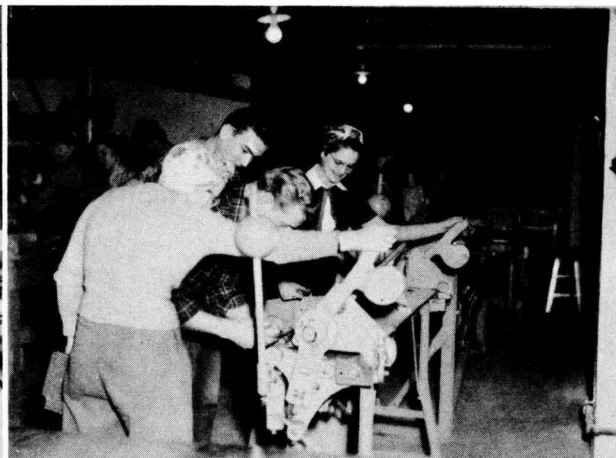
F. E. Perkins and Marion Sivertson
A business education major in a school office job.

Adjustments have been made in the business education department to meet the new demands of the wartime employer and employee. Courses formerly offered only to upperclassmen are now open to any students who desires to enter the business world.

Dr. C. J. Folkerts, formerly of MacMurray College of Illinois, is the head of the department. In February, Miss Mary Ferro accepted a civil service war department appointment with the army engineering corps at Ancon, Panama. Until Miss Berenice Anderson, a recent graduate of the college, joined the staff in March as an instructor in secretarial training, Elaine Johnson, a senior business education major, taught Miss Ferro's classes.



P. G. Rawland



NYA defense class members at work



Pauline Penning

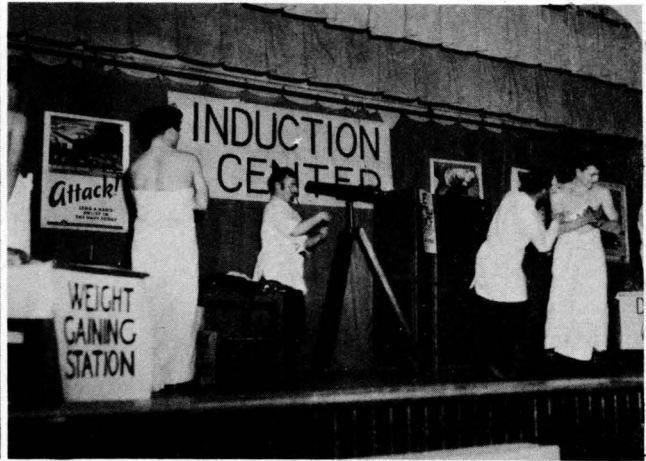
ARTS Limitations of supply called for readjustment in the procedure and methods of teaching in the art department this year. Substitutes were found and ingenious ideas were prevalent among the art-conscious students and their instructor, Miss Pauline Penning, chairman of the Division of Arts and Music.

Mr. P. G. Rawland is the college representative on the faculty for college classes in the NYA pre-induction and war production training program. He supervises riveting, sheet metal, and machine shop classes at the plant as well as instructing his regular college classes.

LANGUAGE AND LITERATURE



Muriel Barsness, Susan Begin, Florence Sjogren, and Ursula Breher represented the college at the Student War Congress which met in Minneapolis.



The new Industrial Arts Fraternity's skit made a hit at the Talahi Revu.

Developments in the fields of literature and speech must be accompanied by study and research. English department faculty members found time to study as well as to readjust their work to meet many new demands. Last summer Dr. William Griffin attended the institute of Spanish American Studies at the University of Minnesota. His article, "Notes on Early Tudor Control of the Stage", was published in the January issue of *Modern Language Notes*.

Dr. Kathleen Munn who accepted a position as linguist in Washington, D. C., in April did research work in Spanish American literature at the New York Public Library last summer.

Mr. Mason Hicks, former head of the speech department, was inducted into the army in 1942. Dr. Ethel Kaump who remained to continue the work of that department, resigned from the teaching staff in January to become Lieutenant Kaump of the Spars. Next year, work in the field of speech will be directed by Miss Mabel Cook, who answered the emergency summons and filled the position of Miss Kaump during winter quarter.

English department faculty members are also responsible for school publications. Miss Lillian Budge is *Talahi* adviser; Miss Amy Dale is chairman of the board of publications; and Miss Helen Hill is *Chronicle* adviser. Miss Hill and Miss Budge have added Air Corps classes to their teaching duties, and Miss Dale teaches several business courses formerly conducted by business education faculty members.



English Department Faculty: Back Row—Mabel Cook, William Griffin. Front Row—Lillian Budge, Amy Dale, Helen Hill, Kathleen Munn.

PROFESSIONAL STUDIES



BACK ROW: Richard Smith, F. E. Perkins, H. A. Clugston, George J. Skewes. **FRONT ROW:** Agnes Brohaugh, Nell Boyd Taylor, Eleanore Schulte, E. M. Paulu, Mabel Paull, Ivah Green.

At first thought it might seem that one of the departments which would suffer the least change in a war year would be the professional studies department. For it is essential to maintain high professional standards in an institution for teacher training. Methods and philosophy of education must be taught as before. Student teaching must be continued.

But when the young men of the Army Air Corps came to our campus, the faculty members of the professional studies department were called upon to reorganize their work and add many new duties to their daily routine.

Dr. Herbert Clugston, newly appointed Dean of Academic Administration, was responsible for planning a course of study for the men of the Army Air Force Gulf Coast Training Center stationed at T. C. As Dean of Academic Administration, Dr. Clugston is director of the academic program of the college. In addition to his other work he finds time to be president of the Minnesota Society for the Study of Education.

Mr. Richard Smith is still serving in the capacity of adviser for degree elementary students and teaching methods classes to all elementary people but he is also an instructor for the Army Air Corps men and custodian of government property in connection with the A. A. F. G. C. T. C. This year Mr. Smith has been a member of the executive council of the Minnesota Education Association.

To unify plans for the work and recreation of the A. A. F. G. C. T. C. with those of the college, Mr. Floyd Perkins was appointed official coordinator.

Dr. Skewes discontinued most of his other duties in order to become a full time instructor of science for men stationed here.

Dr. Skewes' changed program shifted the entire responsibility of advising two-year elementary students, supervising their country teaching, and instructing them in teaching methods to the capable shoulders of Miss Ivah Green.

Mr. E. M. Paulu was also called upon to teach Army Air Corps classes. He has been active in education work as president of the Minnesota Federation of Teachers and a member of the National Committee of the American Federation of Teachers on Teachers Tenure. As chairman of the National Committee on State Federations he has been asked to direct a survey study of federations in United States.

Miss Nell Boyd Taylor is director of the bureau of research and has been appointed a member of the Committee on Pensions and Retirements of Teachers. She and Miss Eleanore Schulte supervised work at the College Nursery School.

Mr. John Talbot has continued his work as director of student teaching and Miss Paull has carried on the work of supervising off campus teaching. In addition to assuming supervisory duties formerly the work of Mr. Perkins, Miss Paull teaches a class in technique.

SCIENCE AND MATHEMATICS

Few changes in the mathematics curriculum were necessary, for the department made wartime adjustments last year and was already offering courses required by the army and navy officials.

Mr. George Bemis, a member of the draft board in the city of St. Cloud, is head of the department. Mr. Rowland Anderson who resigned from the teaching staff in April to enter the naval reserve, was succeeded by Mr. Roland Vandell, a former student of the college. Both Mr. Bemis and Mr. Vandall teach classes in algebra and trigonometry to aviation students. The full time instructor in mathematics for the army is Mr. Frederic Agather, former superintendent at Sauk Rapids.



Mathematics Faculty: Rowland Anderson and Clifford Bemis.

For the past year every member of the science staff has devoted much time to research. Teaching physics to aviation students has added to the responsibilities of science faculty members.

Dr. Croxton, a member of various science and medical committees throughout the state, is head of the department.

Mr. George Friedrich contributes weekly to *Conservation* in his regular column entitled, "Conservation Education."



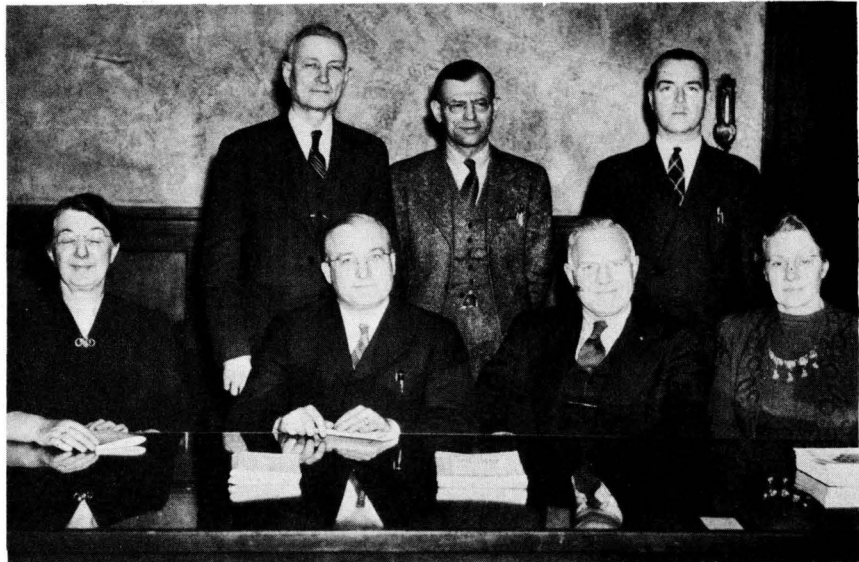
Imogene Bretz, T. C. student drafted to teach meteorology, answers the questions of two C. P. T. students.

Science Department Faculty: Back Row—W. W. Croxton, F. W. Cooke.
Front Row—Donald Brundage, George Friedrich.



SOCIAL STUDIES

Social Studies Department: Back Row—D. S. Brainard, H. P. Lohrman, Ronald Riggs. Front Row—Ethel Graves, John Cochrane, O. J. Jerde, Anna Larson



Educating students and the public to changes in the today's world was one of the first interests of members of the social studies department this year. Public forums conducted by this group throughout the summer and the entire school year have been contributions to the "war education" of many people. "American Attitudes in the War" was the title of the forum led by Mr. Cochrane. Dr. H. P. Lohrman led an interesting and timely discussion concerning "Indonesia". Miss Anna Larson and Miss Ethel Graves also contributed to the forums.

Dr. L. D. Zeleny's position as head of the division has been filled by Miss Ethel Graves. Dr. H. P. Lohrman has taken full charge of sociology courses and has, in addition, been an instructor for the army. Miss Anna Larson also devotes one-half of her scheduled teaching hours to instructing aviation students in geography.

Mr. O. J. Jerde has led the Minnesota Educational Association through an eventful year when war and legislation demanded much time and thought from educators.

Committee members working on a Civilian Morale Survey: Margaret Ann Bengston, Dolores Mieske, James Warren, Jim Comer, Dr. H. P. Lohrman.

O. J. Jerde—M. E. A. President



LIBRARY



Committee members at work in their sponsoring of the Victory Book Campaign.



Library Staff: Mamie Martin, Florence Dodd, Luella Angier, Edith Grannis.



Riverview students cooperate in collecting books for the Victory Book Campaign.

Two hundred books was the original quota set as a goal by members of the Victory Book Campaign Committee. That quota was exceeded during the course of the campaign. Miss Edith E. H. Grannis, head of the library department, and her staff are justifiably proud of the great collection of Victory books sent from T. C. students to men in the service of our country. Every student organization of the college cooperated one hundred per cent by contributing one or more new books purchased from the group's funds. Numerous faculty groups and individual faculty members and students also made contributions. Miss Luella Angier, head of the circulation department of the library, was the library adviser for the selection of the books. Complete charge of the ordering, receiving, and handling of bills in connection with the ordering of the books was in the hands of Miss Ruth Gehm, secretary of the library committee.

Another new and important feature in library work which has contributed much to the war program of the college is the War Information Center conducted by Miss Mamie Martin. She is the official supervising librarian for the war information center at the college. Work at the center involves the collection of newspaper and other clippings that concern the part that the Saint Cloud Teachers College is playing in the war effort. Later this information will be coordinated with that of war activities committees in the city of St. Cloud. But the center has not confined its collection to material concerning T. C. It has accumulated a large collection of pamphlets, books and clippings, which are available to students, Air Corps men, and off campus groups who wish to secure information on any phase of the war.

Last fall, at a division meeting of the teachers' college librarians in Milwaukee, Miss Edith Grannis appeared in a panel discussion; her topic was entitled, "Service Area of a Teacher's College Library." The article recently appeared in the *College and Research Library* magazine.

RIVERVIEW JUNIOR HIGH



BACK ROW: Emma Larson, Edward Colletti, Albertina Anderson, Ronald Riggs, A. F. Brainard, Dora Perry, Beatrice Williams, P. G. Rawland. **FRONT ROW:** Florence Dodd, Margaret Ludwig, Helen Fabricius, Frances Gunlaugson, L. Ruth Cadwell.

The program of studies and recreation for Riverview Junior High School students was much the same in 1943 as in previous years. But the work assumed a new and more serious nature for many of these young Americans, as they did their part to make themselves good citizens and made substantial contributions to the war work of the school and community.

Model planes for identification purposes were made in industrial arts classes. Salvage drives were conducted. The Victory Book Campaign was launched. Victory gardens were planted. The Junior Red Cross was supported whole heartedly—under the able direction of faculty members, with the aid of student teachers.

Riverview Junior High School gives college students the opportunity to put to practice the well-known rule “learn by doing.”



This picture was taken at a rehearsal of the Riverview 9th grade class play. The final production of *The American Boy* was a great success!



Student teacher, Berniece Anderson, directs the class work of a group of Riverview children.

RIVERVIEW ELEMENTARY



Nora Swan, Bertha Camp, Grace Nugent, Frances Neil, Beatrice Williams, Ruth Moscrip, Ruth Cole, Helen Bottum, Agnes Brohaugh.

Adapting the war program to the age level of children in the Riverview Elementary School has been an interesting undertaking. Every class has responded to the calls of the Junior Red Cross and has given whole-hearted cooperation to the Bond and Stamp Committee, headed by Miss L. Ruth Cadwell. A feature that aroused and held the interest of all classes was the Victory Garden. The garden has been planted near the Riverview playground; each class has been given the responsibility of planting certain vegetables. Products of the garden will be used to make the noon lunches served to Riverview students next year.

While children must feel that their work is important in its contributions to today's world, they must also be taught the ideal ways of peace and universal brotherhood. Riverview teachers have not lost sight of this goal; nor have they failed to guide student teachers in pursuing it.



Helen Swedzinski, student teacher, listens to a 6th grader's report.



Miss Lela Stanley and Miss Elise Preus are supervisors of student teaching at the Garfield School.

NURSERY AND RURAL SCHOOLS



Miss Nell Boyd Taylor



A play corner of the Nursery School.



Miss Eleanore Schulte

NURSERY SCHOOL—The Nursery School provides an opportunity for twenty-four children between the ages of two and five to begin their school careers. Miss Eleanore Schulte, full time instructor, assisted by Eileen Greene and Dorothy Brown, senior elementary majors, provides the educational and recreational environment for Nursery School children. Parent education is one of the results of the Nursery School's contact with parents of its children. The school also furnishes an opportunity for observation and student teaching by college students enrolled in child psychology courses and those who are interested in doing pre-school work after graduating. Miss Nell Boyd Taylor is the supervisor.

RURAL SCHOOL—When Mr. George Skewes assumed his duties as instructor of physics for the Army Air Corps classes, the full responsibility of supervising student teaching in the affiliated schools and advising two-year elementary students was delegated to Miss Ivah Green. In these affiliated schools, two-year elementary students do six weeks of student teaching. During this period in which they are "cadets," students become familiar with the peculiar problems of the rural teacher and learn to anticipate and solve many of them.

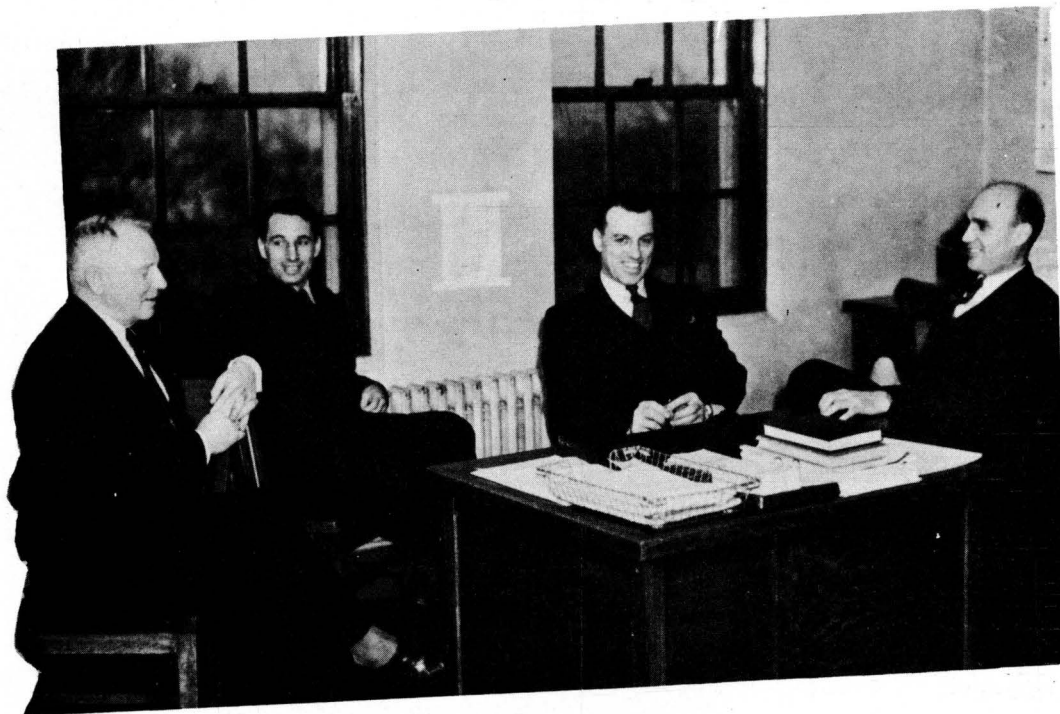


Cadets and students in a rural school give thanks for their lunch.



"Learning by doing" these rural children find that refinishing their own desks is worthwhile fun.

Men's PHYSICAL EDUCATION



George Lynch, Edward Colletti, A. F. Brainard, Warren Kasch.

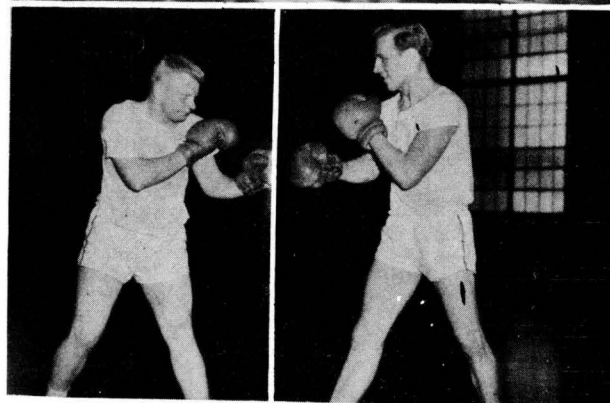
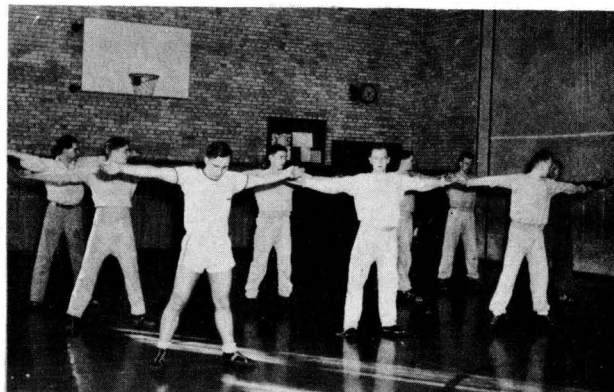
The special class "warms up" with calisthenics.

Building physical health is fundamental to building the strength of our nation. Through their health and physical fitness program, the entire physical education staff has cooperated in the war program of the college.

Boxing, swimming, and tumbling were but a few of the activities stressed in a special class sponsored by the department in order to prepare prospective service men for the armed forces.

Dr. A. F. Brainard, head of the men's physical education department, is faculty chairman of the health and physical fitness committee. The duties of N. Y. A. administrator have been added to the regular work of George Lynch. Mr. Lynch is also faculty chairman of the committee in charge of correspondence with T. C. men in the service.

For three hours each day, Coaches Kasch and Colletti, and A. F. Brainard teach physical training classes for men of the Army Air Corps.



Pearson's and Kessler's boxing class helps to keep them fit.

FOOTBALL



ROW 1: Kramer (manager), Tuttle, Walters (manager.) ROW 2: Hills, Banks, Filippi (co-captain), Shew (co-captain), Zakariasen, Bierhaus, Kessler, Lehn. ROW 3: Weinstein, Ilakson, Roes, Hambrecht, Gray, Lieske, Otterness, Williams. ROW 4: Assistant Coach Colletti, Seaton, Renn, Beseman, Sherman, Sheldon, Aamot, Coach Kasch.

In spite of obstacles such as not having enough men to hold scrimmages during practice or just having five players ready for the backfield at any one time, Coaches Kasch and Colletti managed to shape up an eleven that went on to cop the conference title and remain one of the few undefeated and untied football teams in the nation.

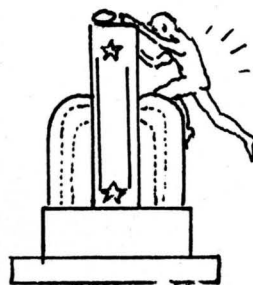
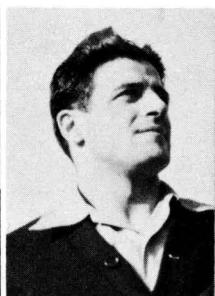
When the St. Johns game was cancelled because of snow, the Huskies were forced to play their first conference battle with the Winona team without any warm-up tussle. But the undaunted Kaschmen defeated the men from Winona 19 to 0. The Duluth Bulldogs were next on the list for the home team and the Huskies had little difficulty in swamping the Bulldogs 25 to 7. After this came the game of the year with the Bemidji Beavers; "Trap the Beavers" was the homecoming cry from the bleachers and "Trap the Beavers" they did, to the tune of 14 to 0. Moorhead was next to fall under the indomitable spirit of the small squad, 39 to 0 was the score at the close of the game. It was predicted that the next tussle would be the downfall of the St. Cloud eleven for the U. of Minnesota Freshmen were their opponents. Again the home team came through to upset the dopesters and the yearlings 6 to 0. Eau Claire furnished little competition for the Huskies in the final game as the Kaschmen came out on top 47 to 0.

« HUSKIE VICTORIES »

S. T. C.....19	Winona T. C.....0
S. T. C.....25	Duluth T. C.....7
S. T. C.....14	Bemidji T. C.....0
S. T. C.....39	Moorhead T. C.....0
S. T. C.....6	U. of Minn. Freshmen.....0
S. T. C.....47	Eau Claire T. C.....0

HARVEY SHEW, Co-captain

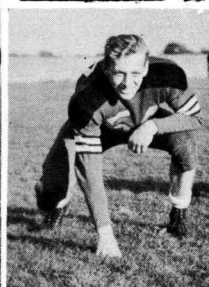
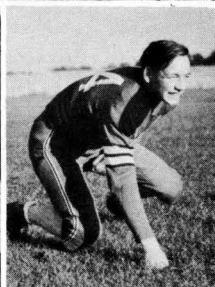
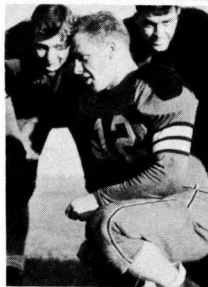
LOUIS FILIPPI, Co-captain



FRITZ BIERHAUS

JIM HILLS

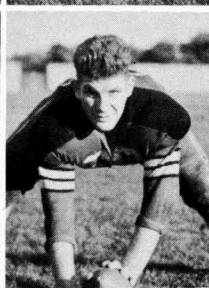
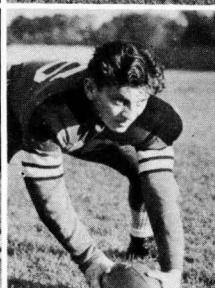
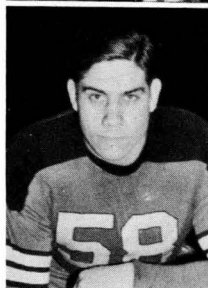
WILBUR KESSLER



KENNETH ZAKARIASEN

JIM ROES

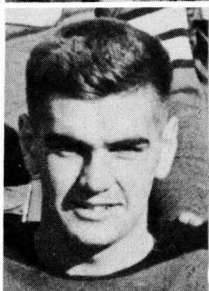
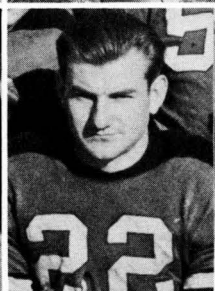
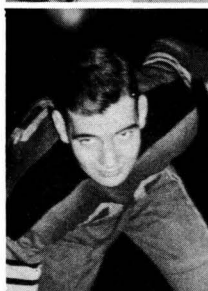
DONALD RENN



STANTON WILLIAMS

AL BANKS

HENRY HAMBRECHT



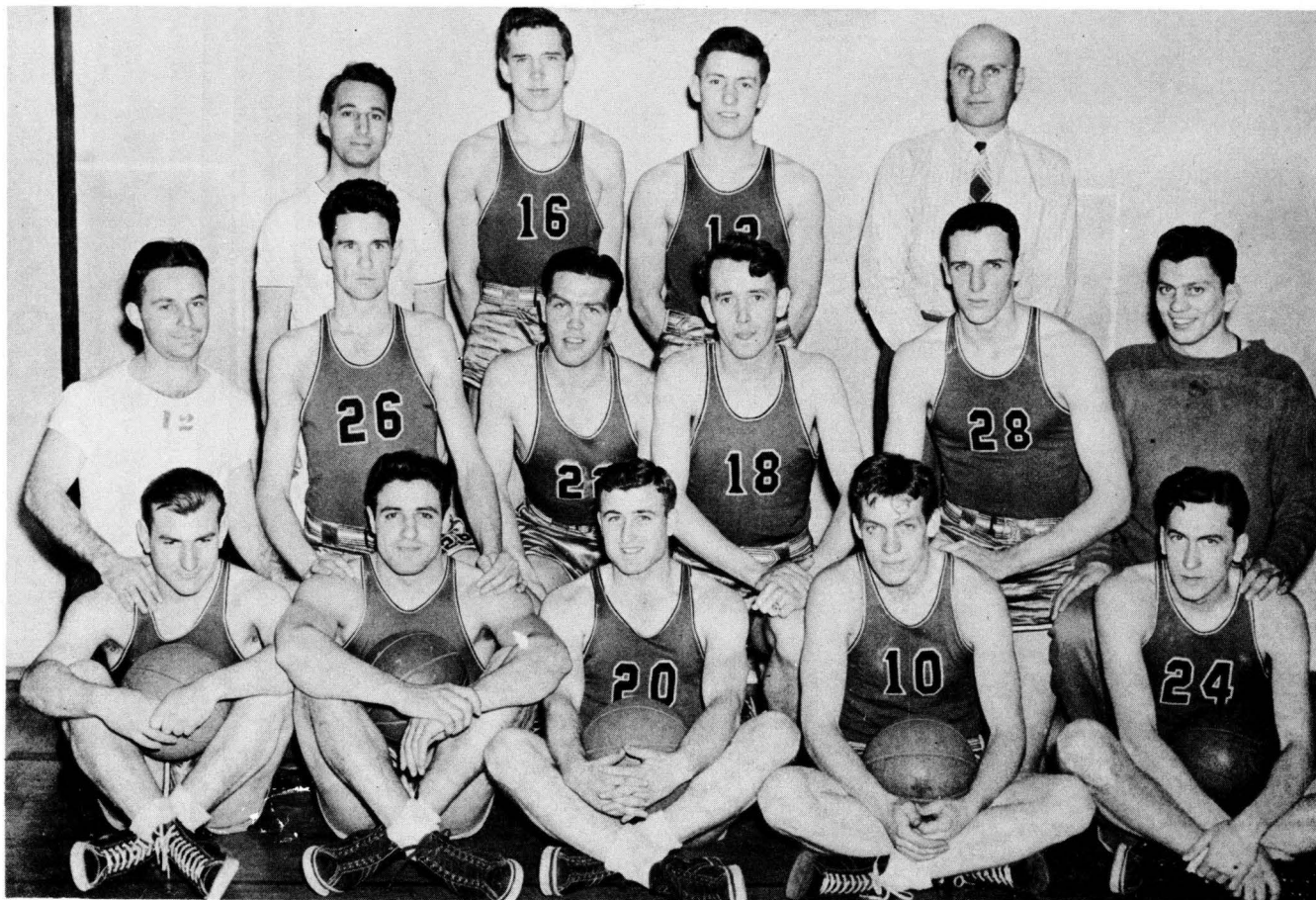
BASKETBALL . . .

Winding up the season by receiving an invitation to compete in the National Intercollegiate Basketball Tournament held in Kansas City, the St. Cloud Huskies again stamped themselves as champions in any league throughout the nation.

Opening the schedule with a sizzling 37 to 34 victory over their traditional rival St. John's University, the Huskies set the amazing record of winning 11 straight games. The highlight of the year was the memorable tussle with the Moorhead Dragons whom the home team finally managed to squeeze out with a 49 to 46 win. The Dragons played the last few minutes of the game with but three players on the floor. Five men were ejected from the contest because of the four foul rule.

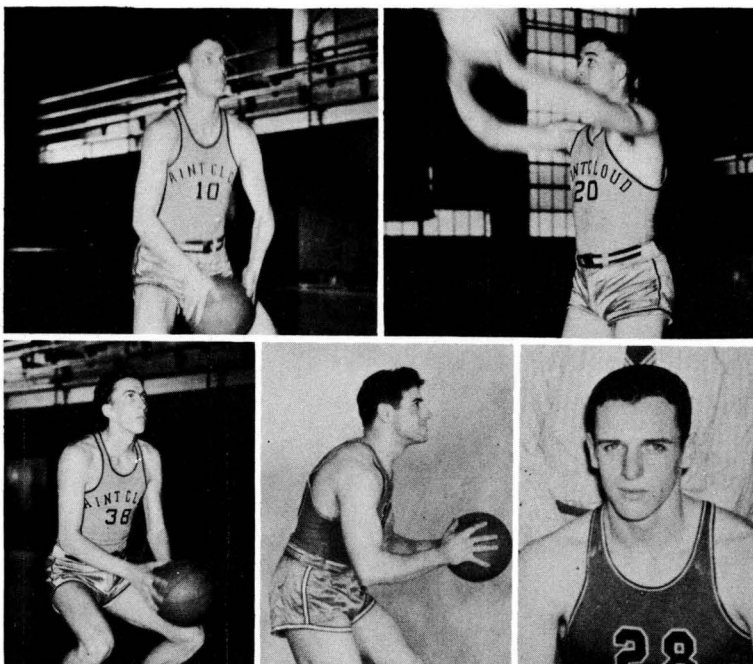
With the Verndale Twins, Co-captains Jack Conley and Earl Seaton leading the way, the Kaschmen used their famous fast break offense to great advantage. Willard Walters and Louis Filippi proved to be two very effective stalwarts in the line-up as again and again their timely scoring spelled victory for the Huskies. Two freshmen stepped into the varsity lineup as alternate centers and came through in great style. Rueben Lieske and Ed Perkins grabbed many rebounds off the boards either to pop in a bucket or to start their teammates on their way down the court for the coveted two points. Reserves were Banks, Hambrecht, Rygh, Jackson, and Pettit.

ROW 1: Banks, Filippi, Conley (Co-captain), Seaton (Co-captain), Walters. **ROW 2:** Kramer (student manager), Perkins, Rygh, Hannula, Lieske, Roes (student manager). **ROW 3:** Assistant Coach Colleti, Jackson, Durrenberger, Coach Kasch.



« HUSKIE VICTORIES »

S. T. C.....37	St. John's University.....34
S. T. C.....62	Augsburg College.....61
S. T. C.....50	St. John's University.....39
S. T. C.....37	Augsburg College.....33
S. T. C.....42	Eau Claire T. C.....41
S. T. C.....56	Duluth T. C.....31
S. T. C.....47	Winona T. C.....31
S. T. C.....48	Mankato T. C.....37
S. T. C.....49	Moorhead T. C.....46
S. T. C.....49	U. of Minn. Freshmen.....31
S. T. C.....38	Bemidji T. C.....33
S. T. C.....47	Moorhead T. C.....50

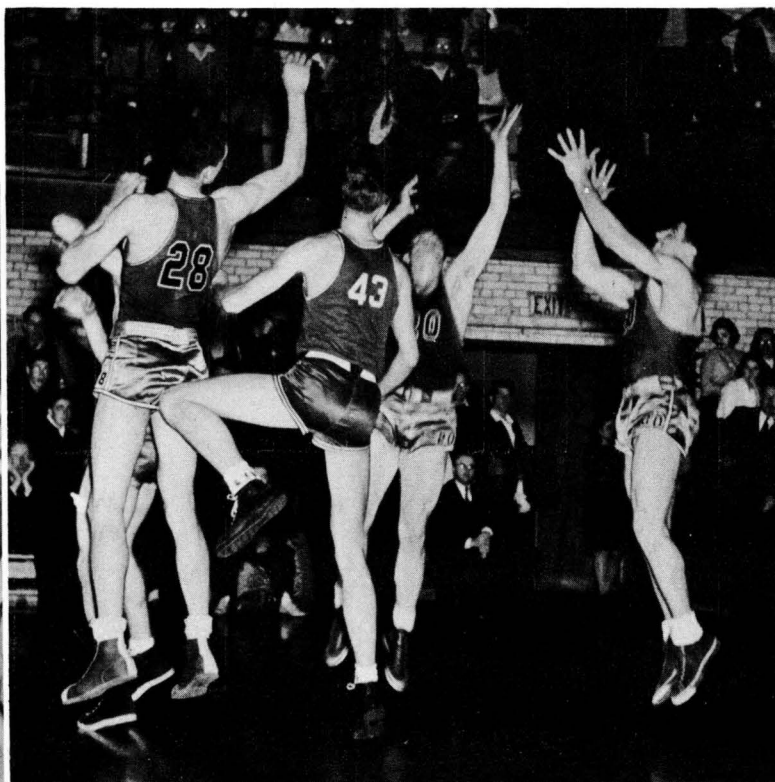
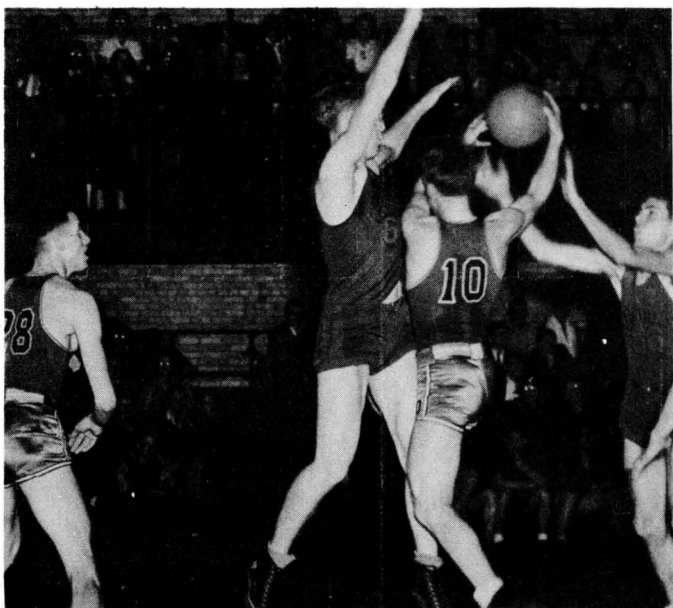


Earl Seaton, Jack Conley, Co-Captains

Willard Walters, Louis Filippi, Reuben Lieske

NATIONAL INTERCOLLEGIATE BASKETBALL TOURNAMENT

S. T. C. 59	Texas Wesleyan College.....54
S. T. C. 41	Eastern Washington College of Educ. 54



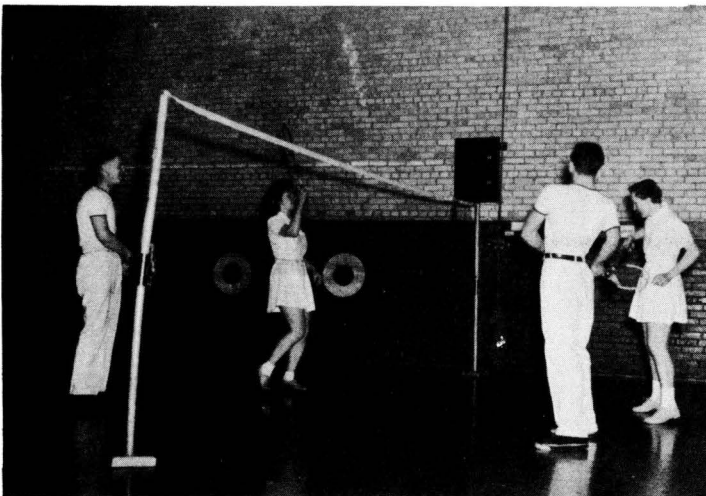
Women's PHYSICAL EDUCATION



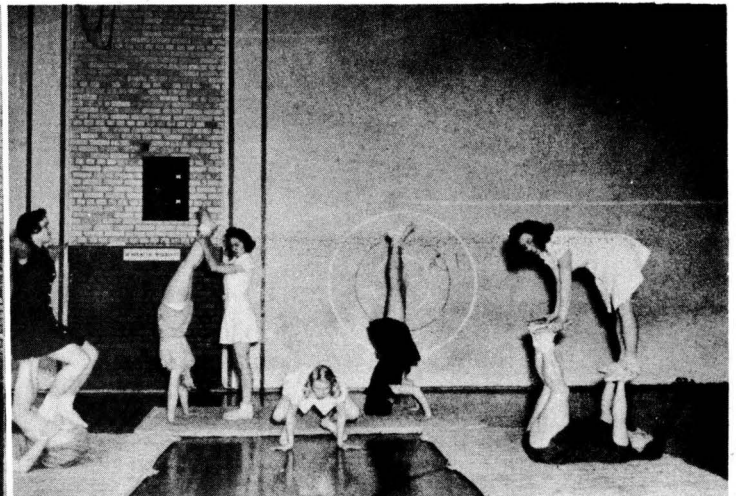
BACK ROW: Elizabeth Barker, Marie Case. FRONT ROW: Frances Gunlaugson, Helen Fabricius.

To keep all college women physically fit through a varied health and sports program, has been the aim of the women's physical education department this year. Miss Helen Fabricius, supervisor of student teaching in physical education, is faculty head of the sports program. Miss Marie Case, department head, is chairman of the Red Cross Water Safety Program for Stearns County. In this capacity, she has conducted evening classes in Senior Life Saving and the Water Safety Instructor's Courses. When Miss Evangeline Jaffurs resigned last fall, Norma Nelson, Senior physical education major, became a part-time assistant in the department. Shirley Atkinson is the student assistant in charge of modern dance classes. Dr. Elizabeth Barker has been the active leader of the War Activities Committee on Nutrition.

At the extreme right of this picture, Norma Nelson, part-time faculty member, demonstrates a badminton shot.



An informal view of the girls' tumbling class.





The Talahi

STATE TEACHERS COLLEGE

St. Cloud, - Minnesota

Dear Joe:

This will be just a hurried note to tell you we're enclosing a bunch of pictures and reports of fellows you knew--T. C. boys now in uniform, serving on the seven seas and in every continent.

Many of them haven't written to us and we just couldn't keep track of them all. Keith Smith, Don Rundquist, Jim Robb, Herman Hoplin, Bernard Bliese, Don Johnson, Earl Henning, and Ray Zakariasen are names you remember but you won't find their pictures here. There is a group of girls, too, whose place is here--Marjorie Mills, Joyce Claerbout, and Joan Flaherty of the WAACS. Ina Marie Ohs and Dorothy Bohlmann are now in the WAVES. No doubt you can mention others.

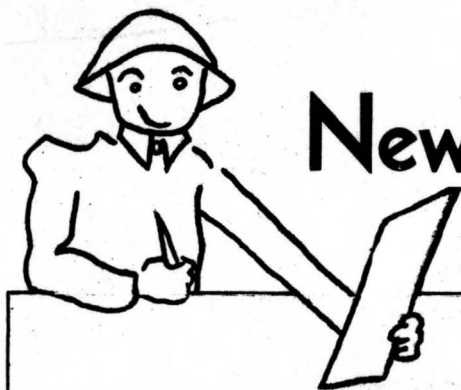
Not more than a month ago word came that Lt. Bob Kavanaugh has been missing in action since May 1. You'll find his picture here. It's hard to believe he won't come back. We think he will. For Bob's was the indomitable spirit of you all--the spirit of a man who did his work well because he believed in it.

In spite of the incompleteness of these pages we think they're something you'll treasure.

Sincerely,

NEWS FROM THE FRONT

V . . —

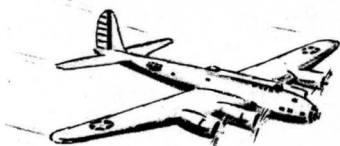


News From The Front

Put. Charles Bundy

U. S. MARINE CORPS

Dec 23, '41.



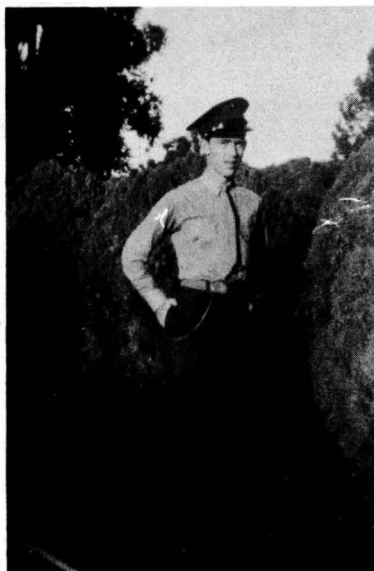
MCCHORD FIELD
WASHINGTON

a third di
luck, we h
like someth
have to.

Besides
damn good
from a squ
tank. We
logs, anyt
Right
on the airfie
directing t
dozers, ca
rock —

Private Charles Bundy entered TC as a freshman in the fall of '41. During that school year he enlisted in the U. S. Marines. Now Chuck is learning what Uncle Sam wants him to know about radio aviation. He's stationed at San Diego, California.

Second Lieutenant Michael L. Berkowitz has been overseas since October 1942. He enlisted in the Army Air Corps in January of 1942. From 1939 to 1941, Mike made us proud of him at T.C. His record's still among the best. He was one of a group of 115 members of a U. S. bomber crew to receive an air medal in London for exceptionally meritorious service. Announcement of this recognition was made in March, 1943, by the Eighth Army Air Force.



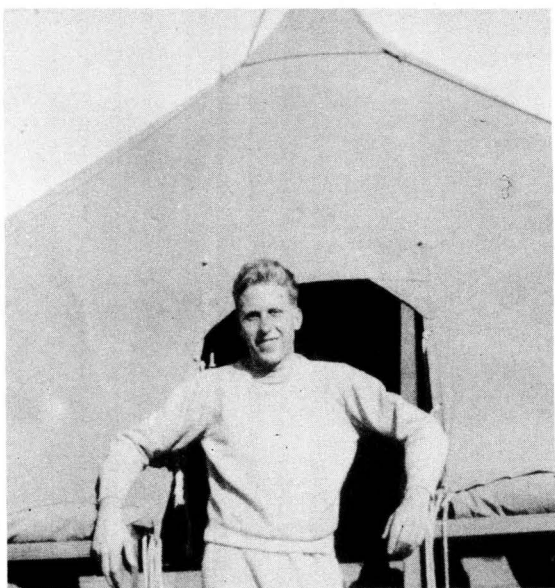
PRIVATE CHARLES BUNDY



LIEUTENANT MICHAEL BERKOWITZ

"OFF WE GO INTO THE WILD BLUE

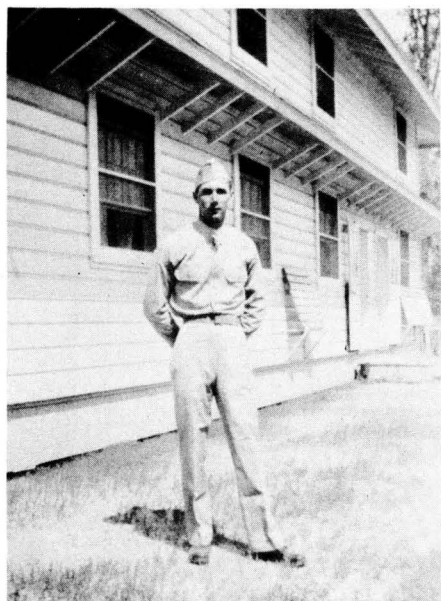
FLYING HIGH



A/C ROBERT H. STAI

Aviation Cadet Robert H. Stai enlisted in the Army Air Corps in May 1942. In November, Bob was sent to Santa Ana, California for pre-flight training. Later, he was transferred to King City. When he graduated from primary flight training there, he was given one of four "best flier" awards: Bob's class is 43H. He is now stationed at Gardner Field, Taft, California, for basic training.

Pvt. Harvey Liutjens went to Jefferson Barracks, Missouri, for his basic training for the Army Air Corps. From there he was transferred to Scott Field, Illinois where he studied radio mechanics and operations. Harvey is now taking combat training at Smyrna, Tennessee.



PRIVATE HARVEY LIUTJENS

Aviation Cadet Ingebrigt (Mickey) Hanson took his primary and secondary C. P. T. flight training at TC. He enlisted in the Army Air Corps in June 1942. Mickey is now in Augusta, Georgia and will be commissioned as a second lieutenant in June

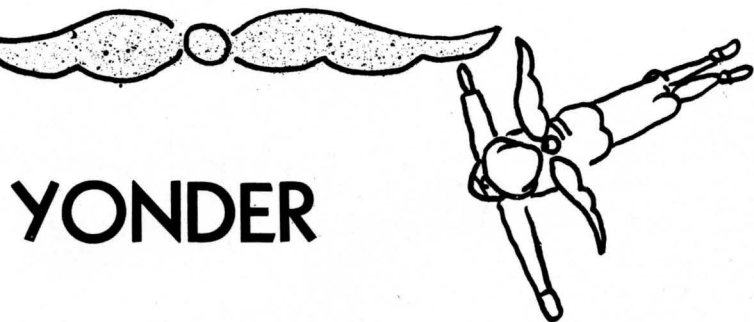


A/C MICKEY HANSON

Lieutenant Martin Govednik was first stationed at Camp Swift, Texas. From there he was transferred to Fort Sam Houston and then Boca Raton, Florida. After taking a technical training communications course, Marty received his commission as a second lieutenant.



LIEUTENANT MARTY GOVEDNIK



YONDER

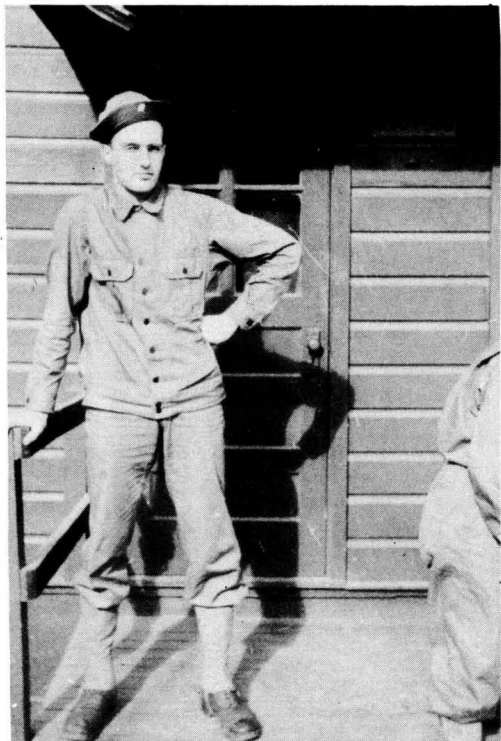
INTO THE SUN"

Lieutenant Robert Kavanaugh enlisted in the Army Air Corps in the summer of 1941. After receiving his pilot training in several U. S. camps, he was sent to India. It isn't a military secret that Bob is stationed somewhere on the Burma Road. And from that base he flies on seven day raids over the territory around Delhi.



LIEUTENANT ROBERT KAVANAUGH

Technical Sergeant Charles Roth, *Talahi* photographer of '42, is stationed at McChord Field, Washington. When Charlie completes his training, his job will be to camouflage allied territory so the Nips and Germans won't know it's there!

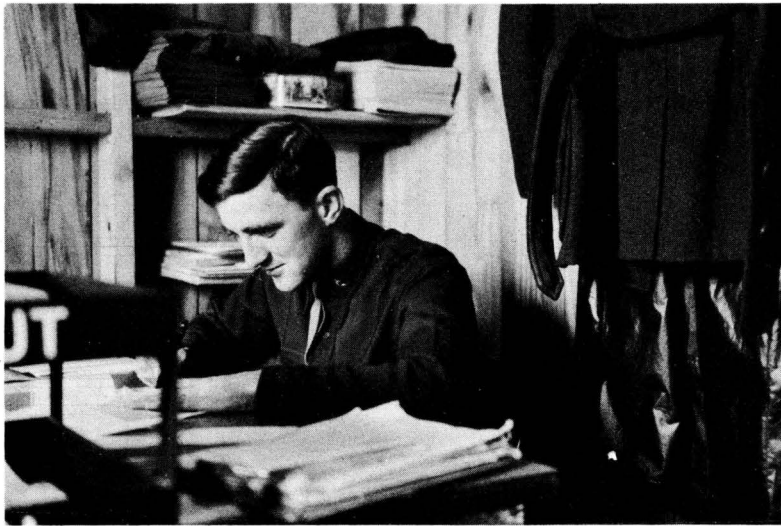


SERGEANT CHARLES ROTH

Private Wyman Hanson is stationed at the Army Air Forces Technical school at Keesler Field, Missouri. He will be an airplane mechanic. Wyman took his basic training at St. Petersburg, Florida.



PRIVATE WYMAN HANSON



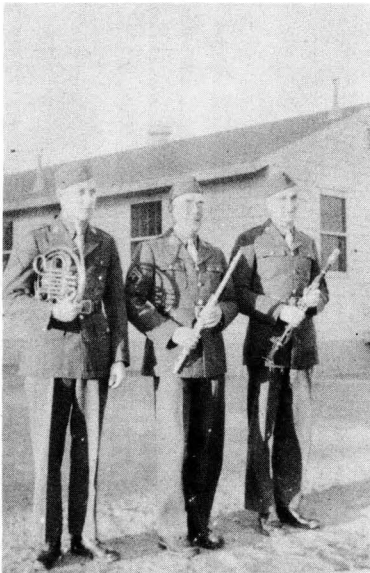
LIEUTENANT DICK HEANEY

Lieutenant Dick Heaney was inducted as a buck private into the field artillery at Camp Livingstone, Louisiana. During his training as a mess sergeant, he was accepted for officer's training and was later commissioned a 2nd lieutenant in the Quartermaster Corps. He then was sent to motor school in San Antonio, Texas. Dick is now in charge of a heavy maintenance unit and hopes to be sent across soon—where "army made" mechanics can do a lot of damage.



PRIVATE MAURICE RUNDQUIST

Private Maurice Rundquist was inducted into the army in July 1942. He has received his training in Camp Wallace, Texas, and at Camp Davis and Fort Fisher, North Carolina. Maurice is a member of the Anti Air Craft Training Camp Band and has served as camp bugler. He attended T. C. from 1939 to 1942 and is remembered for his participation in musical activities.



CORPORAL ELLSWORTH WOESTEHOFF

CORPORAL PHILIP THIELMAN

PRIVATE ORVILLE WOESTEHOFF

Corporal Ellsworth "Babe" Woestehoff is one of the "Pike's Peak Boys." The name is given to the ski troopers there because Camp Carson is so close to that famous mountain peak. He has taken "guerillo-commando" training—a physical toughening program. With his music, Babe does a lot to keep up soldier morale.

Corporal Philip Thielman is a member of the 49th Combat Engineers Regimental Band. He is stationed at Camp Carson, Colorado. Phil is from St. Cloud. He graduated from T. C. in 1933.

Private Orville Woestehoff is at Camp Carson too. He and Babe are also members of the Regimental Band. As engineers, they are trained to go ahead of all advancing infantry, tanks, and artillery and to locate and explode land mines. Orv has organized a regimental chapel choir.



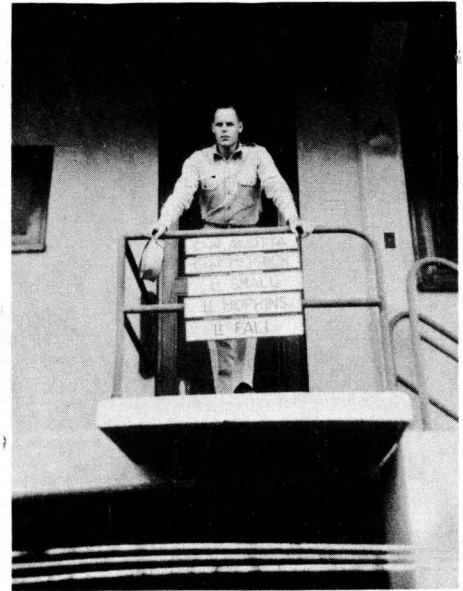
"OVER HILL, OVER THE DUSTY TRAIL AS



PRIVATE ROBERT POST

Private Robert Post is now at Fort Leonard Wood, Missouri working in the finance office of division headquarters. He is in the 75th Infantry Division, the first division to be fully activated in the state of Missouri. Bob was business manager of the *Talahi* for the first third of the year. His first months in the service were spent in the hospital at Fort Sheridan, Illinois, where he put up a prolonged struggle against the pneumonia enemy.

Staff Sergeant Steve Odanovitch was first stationed at Fort Knox, Kentucky. From Fort Knox his cadre traveled via tank to Camp Campbell, Kentucky, where Steve is now Communications Sergeant in charge of radio communications between all tanks in Company E. In addition to this work, Steve is busy training new recruits for work in communications.



LIEUTENANT CLAIR FALL

Lieutenant Clair Fall is now attending officer's training school for his next commission. Clair is now overseas; his A. P. O. address is New Orleans, Louisiana. He graduated from T. C. in '39.

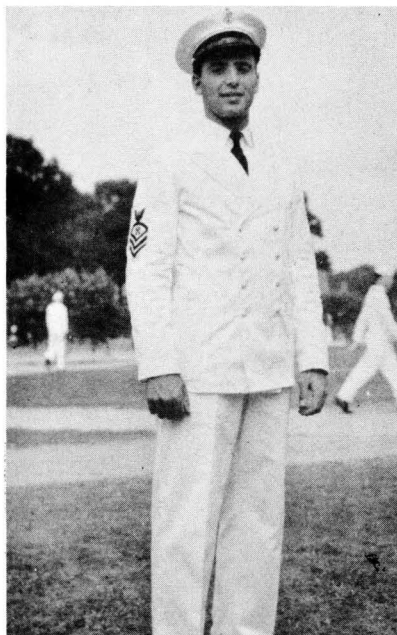


SERGEANT STEVE ODANOVITCH

DALE, WE WILL HIT
THOSE CAISSONS GO ROL"



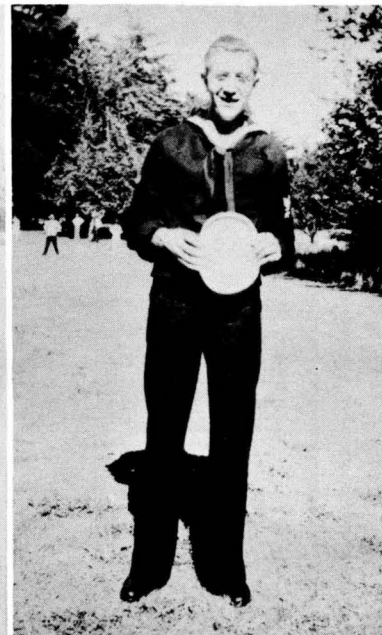
"ANCHORS AWEIGH, MY BOYS,



DON KLEIN
Chief Specialist



FLORIAN SAVELKOUL
Yeoman 3rd Class



ENSIGN GEORGE NELSON

Chief Specialist Don Klein graduated from T. C. in June 1942. We'll always remember Don for his all-around fame in Athletics, art, and scholarship. Don took his preliminary training at Norfolk, Virginia. For two weeks he trained at sea on the U. S. S. Wyoming. His receiving station now is San Diego; He is serving in the South Pacific. Don's on shipboard putting his gunnery training to practical use.

Florian Savelkoul, Yeoman 3rd class, reported to the Great Lakes Naval Training Station in June, 1942. He is now in charge of a battalion office in the newest addition to the station. Florian, who has visited school twice this year, regretfully announced that his work at Great Lakes seems to be permanent. But he likes his work! His duties consist of dictation, transcription, filing, and seeing that company schedules are carried out.

Ensign George Nelson enlisted in the naval reserve in April, 1942. After receiving his basic training at San Diego, he was transferred to Treasure Island, California and to the University of Chicago. He is now at Norfolk, Virginia, and has received his commission as ensign in the Supply Corps. He will soon be sent to Harvard University for further training. George graduated from T. C. in 1941.

Chief Specialist Winfield "Babe" Pehrson took his preliminary training at Norfolk, Virginia, in physical instructors' school and gunnery. His two weeks training at sea were on the U. S. S. Wyoming. Babe is on the U. S. S. Butler now. His receiving station is New York. His duties deal with physical education and gunnery. Babe graduated from T. C. in the spring of '42.

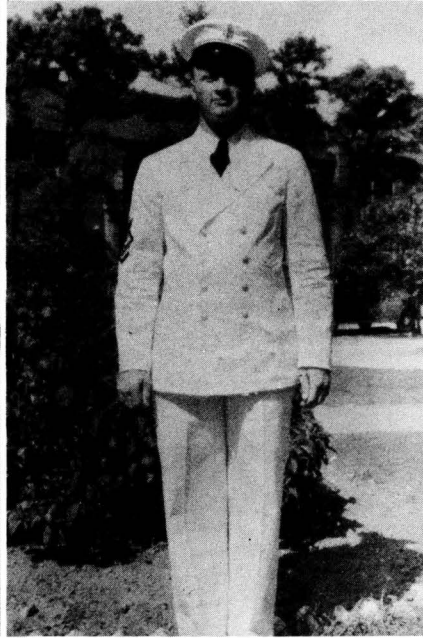


WINFIELD PEHRSON
Chief Specialist

ANCHORS AWEIGH; FAREWELL TO



DONALD ERKENBRACK
Petty Officer 3rd Class



MARVIN POTTHOFF
Chief Petty Officer

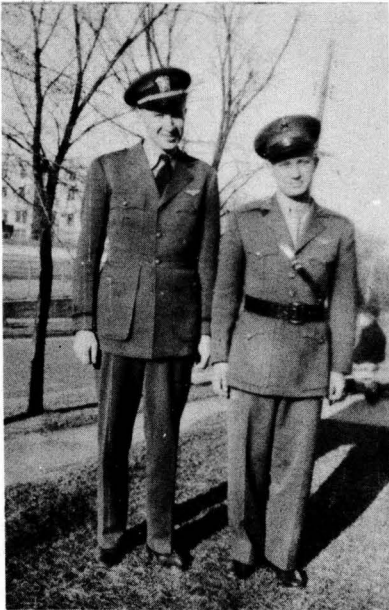


ENSIGN JEROME W. McCARTY

Donald Erkenbrack, Petty Officer Third Class, enlisted in the navy in the summer of '42. After taking his boot training at Great Lakes, Don studied radio aviation at Jacksonville, Florida. Ranking fourth high in a class of 140, he was sent to Hollywood, California, to study aerial gunnery. From there he was sent to Treasure Island, California. Don would have graduated from T. C. with the class of '44.

Chief Petty Officer Marvin Potthoff enlisted in the "Gene Tunney Physical Fitness Program" as an instructor. After ten weeks of intensive training at Norfolk, Virginia, he was sent to the U. S. Naval Air Station at Seattle, Washington, where he is directing the swimming program and supervising the calisthenics program. Marv says the setup is run much the same as the routine in a school—regular classes are from eight to four-thirty.

Ensign Jerome W. McCarty received his navy indoctrination at Columbia University, New York. After this intensive training, he received his bars and was sent to the University of Illinois to study Diesel engineering. On completion of this course, he will be sent to a diesel powered ship as an engineering officer. Jerry says the work is hard but interesting and claims that "there is no branch of the service to compare to the navy."



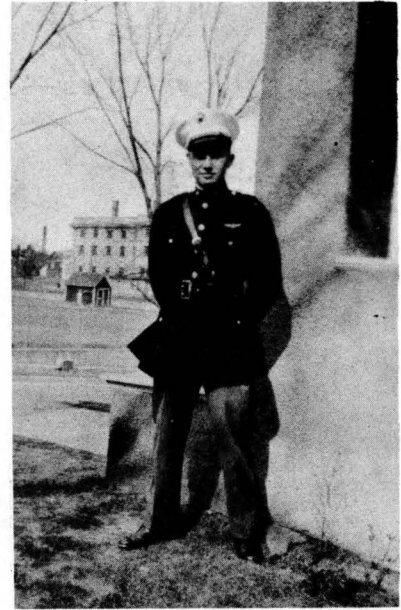
LIEUTENANT ARTHUR HANSON
ENSIGN ALVIN AYERS

Ensign Alvin Ayers received his C. P. T. training in St. Cloud and Rochester. Later Al enlisted in the Naval Air Corps and he's now an instructor at Wold Chamberlain Field in Minneapolis.



NORMAN K. BAILEY
Chief Petty Officer

Norman K. Bailey, Chief Petty Officer, enlisted in the Coast Guard in June 1942. He is now in San Francisco, not far from Seamen Teas and Anderson, instructing Coast Guardsmen in chemical warfare.

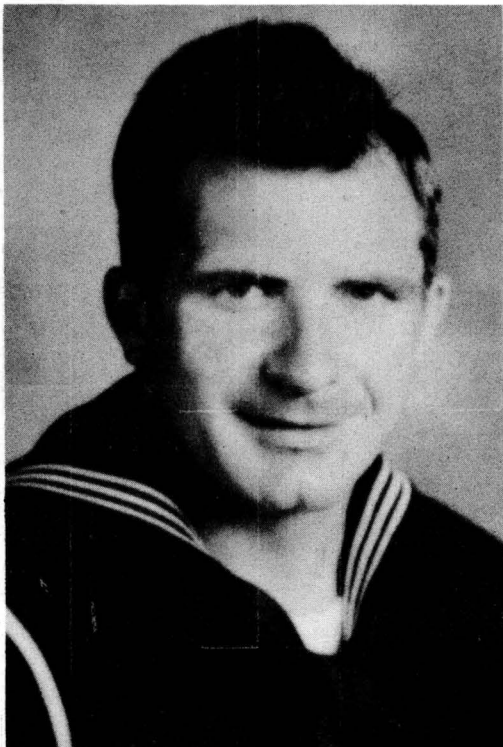


LIEUTENANT ARTHUR HANSON

Lieutenant Arthur Hanson enlisted in the Naval Air Corps in July 1942 after completing his C. P. T. training in St. Cloud. But the Marines claim Art now. He's been transferred to the Marine Air Corps and is in Cherry Point, North Carolina.

Earl Teas, Seaman 2nd class, enlisted in the Coast Guard in the summer of 1942. At present Earl is a member of a crew on a coast guard patrol boat in the San Francisco Bay area. This boat escorted the San Francisco cruiser which won fame in the battle of Guadalcanal.

Ted Kruger, Petty Officer 3rd class, enlisted in the Coast Guard in April 1942. Ted was at the Manhattan Beach Training Station, Brooklyn, New York, for his preliminary training and is now on active duty in the North Atlantic aboard the U. S. S. Tampa.



EARL TEAS
Seaman 2nd Class

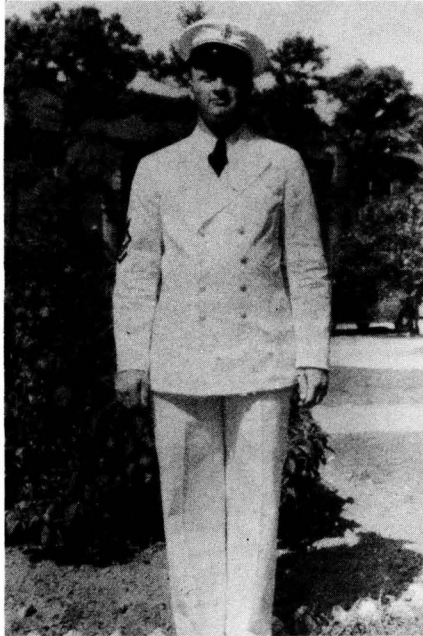


TED KRUGER
Petty Officer 3rd Class

ANCHORS AWEIGH; FAREWELL TO



DONALD ERKENBRACK
Petty Officer 3rd Class



MARVIN POTTHOFF
Chief Petty Officer



ENSIGN JEROME W. McCARTY

Donald Erkenbrack, Petty Officer Third Class, enlisted in the navy in the summer of '42. After taking his boot training at Great Lakes, Don studied radio aviation at Jacksonville, Florida. Ranking fourth high in a class of 140, he was sent to Hollywood, California, to study aerial gunnery. From there he was sent to Treasure Island, California. Don would have graduated from T. C. with the class of '44.

Chief Petty Officer Marvin Potthoff enlisted in the "Gene Tunney Physical Fitness Program" as an instructor. After ten weeks of intensive training at Norfolk, Virginia, he was sent to the U. S. Naval Air Station at Seattle, Washington, where he is directing the swimming program and supervising the calisthenics program. Marv says the setup is run much the same as the routine in a school—regular classes are from eight to four-thirty.

Ensign Jerome W. McCarty received his navy indoctrination at Columbia University, New York. After this intensive training, he received his bars and was sent to the University of Illinois to study Diesel engineering. On completion of this course, he will be sent to a diesel powered ship as an engineering officer. Jerry says the work is hard but interesting and claims that "there is no branch of the service to compare to the navy."

