

St. Cloud State University

theRepository at St. Cloud State

Alumni Magazines

Alumni Publications

Summer 1984

Outlook Magazine [Summer 1984]

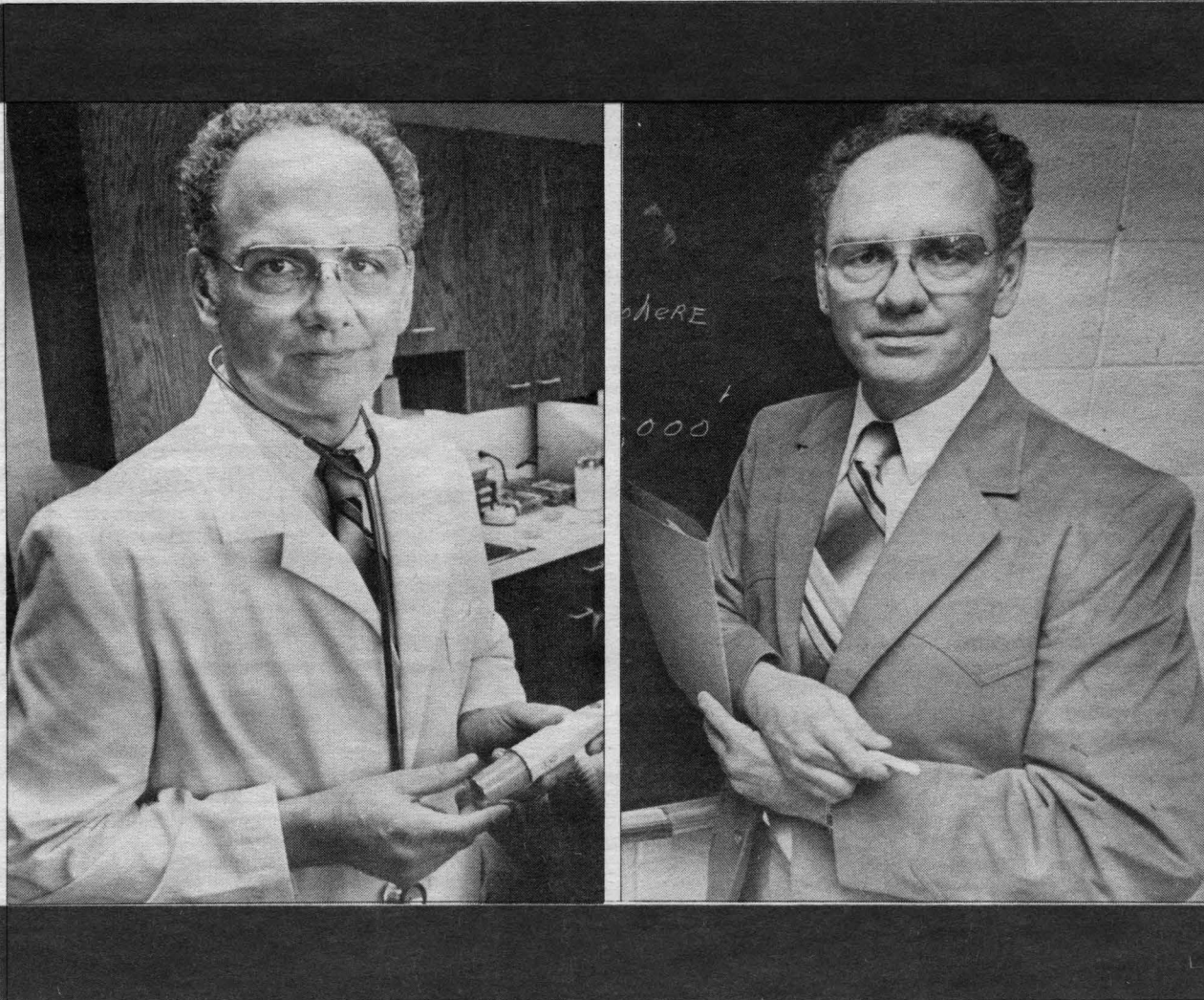
St. Cloud State University

Follow this and additional works at: <https://repository.stcloudstate.edu/magazines>

Recommended Citation

St. Cloud State University, "Outlook Magazine [Summer 1984]" (1984). *Alumni Magazines*. 23.
<https://repository.stcloudstate.edu/magazines/23>

This Book is brought to you for free and open access by the Alumni Publications at theRepository at St. Cloud State. It has been accepted for inclusion in Alumni Magazines by an authorized administrator of theRepository at St. Cloud State. For more information, please contact tdsteman@stcloudstate.edu.



Inside Outlook:

Teaching from experience
Annual report to investors
Summer theatre plans
Calling for opinions
Alumni achievements
New endowed programs

Part-time teachers

Adjunct faculty members share practical experience with students

A filmmaker, a county attorney, a black belt karate expert, a flight surgeon. They may seem to have little in common.

But they, and a select group of others, are adjunct faculty members—persons who teach part-time at SCSU, usually while maintaining outside careers.

Adjunct faculty bring to the classroom a “hands-on” familiarity with their fields, as well as highly specialized skills that allow SCSU to offer courses which otherwise would not be available. They also bring to the university the same qualities sought in regular faculty: outstanding professional reputations, a record of achievement, and a dedication to teaching.

During an academic year SCSU employs dozens of adjunct faculty. For one night a week, an individual who, in “real life,” is a counseling psychologist or a bank vice-president becomes a teacher of others seeking success in that career field.

“The beauty of American education is that it offers a blend of academic and practical experience,” says SCSU President Brendan J. McDonald. He explains that through the use of adjunct teachers, who complement a diverse and highly-talented regular faculty, SCSU is able to “provide the best combination of theory and practice to students.”

Adjunct faculty members often travel long distances to SCSU. They may rise early and stay up late, toiling over course outlines, lecture notes, exams. Often these duties are in addition to their 40-hour-a-week (or more) regular jobs.

Why do they do it?

For the challenge, for the fun, for the privilege of sharing skills and insights in the hope of making people's lives better.

Here are profiles of six SCSU adjunct faculty members who have demonstrated both an outstanding commitment to their career fields and a zest for the classroom experience.

Dr. James Gambone

One of the Midwest's leading independent film producers, Dr. James Gambone taught film production this spring in the Mass Communications Department. His credits include many commercial and non-commercial projects, including the award-

FRONT COVER: Although Dr. David VanNostrand's medical practice keeps him busy, he finds time to teach aviation medicine in SCSU's aviation program. A partner in Associates in General and Thoracic Surgery in St. Cloud, VanNostrand is one of several practitioners teaching part-time on the campus.



Dr. James Gambone

winning *Agent Orange: A Story of Dignity and Doubt* narrated by Martin Sheen.

Working with local residents, Gambone also is shooting a young people's film in St. Cloud which will be distributed nationally. Because it is a unique community effort, the St. Cloud Children's Film Project is receiving considerable attention from the national media. It also offers SCSU student interns and volunteers a rare opportunity to help in the making of a movie.

A St. Paul resident, Gambone has, over the years, been a popular lecturer at SCSU, as well as teaching at the University of Minnesota and Film in the Cities. He says, “I see myself as an educator first, and a filmmaker second. Film, for me, is just a vehicle for education.”

Gambone says he gets a sense of satisfaction from knowing that he is providing students with technical skills that will make them more employable. And he feels he benefits from the “opportunity to reflect and synthesize. Most busy professionals never take time to really look at their work and what it means—to themselves, and to others.”

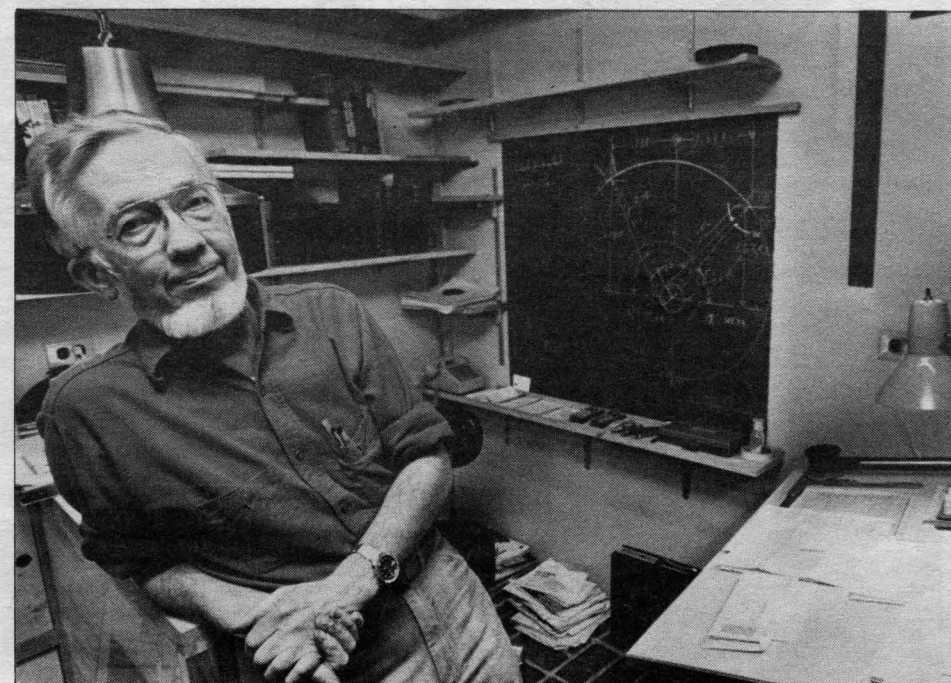
Dr. R. John DeSanto, Mass Communications Department chairperson, says he is continually seeking out media professionals to serve as lecturers and part-time faculty. “They are essential to our program,” he explains.

Recent adjunct faculty have included Joe Ormsby, a local radio news director, and Mike Knaak, photo editor at the *St. Cloud Daily Times*.

William Carlson

St. Cloud resident Bill Carlson has taught part-time at SCSU for nine years, both before and after his 1983 retirement as senior design engineer at DeZurik Corp. Before joining DeZurik, Carlson was top design engineer at Honeywell, Inc. He also holds 36 patents, has been named Engineer of the Year by the Minnesota Society of Professional Engineers, and has been inducted into the Minnesota Inventors Hall of Fame.

He says his teaching duties, including a spring course in lightweight kinematics, keep him current in his field. The curriculum is demanding: SCSU students cover as much in one quarter as engineering students at other schools cover in three quar-



William Carlson

ters, he says. “But it is a delight to see students catch on.”

Dr. Robert Ryan, chairperson of the Department of Technology and Industrial Engineering, adds that he regularly employs personnel from DeZurik and other regional corporations not only for their expertise, but because they can provide the first link between the student and industry. “Many adjunct faculty are the beginning of a student's ‘network’ in the professional world, providing contacts that can lead to internships, jobs, and other opportunities,” he explains.

Dr. David VanNostrand

Dr. David VanNostrand's affiliation with SCSU began with his father, Dr. M. Eugene VanNostrand, who was a member of the psychology faculty for three decades.

After the younger VanNostrand became a partner in Associates in General and Thoracic Surgery in St. Cloud, as well as a pilot and area flight surgeon, he felt it was natural that he should do some lecturing in SCSU's aviation program. Five years ago, that led to a part-time teaching appointment in aviation medicine.

VanNostrand says he has several reasons for teaching. “I believe it is important for aviation students to understand the physiological aspects of altitude and pressure—it will make them better and safer pilots. Also, I appreciate the opportunity to educate people as to what doctors are really like. I think we have an image problem.”

In technical areas, SCSU uses several adjunct faculty in addition to VanNostrand to teach special subjects, such as mechanisms, technical writing, engineering graphics,

(continued, page 2)

Learning to lead. Between 200 and 300 high school juniors have been invited to a Leadership Institute June 17-20 at SCSU which will focus on social responsibility. The institute will feature talks by Minnesota Viking Keith Nord, Scott County Attorney Kathleen Morris, and Mark Scharonbroich, a public relations representative for Josten's, Inc. Participants who plan to attend SCSU will receive a \$300 tuition scholarship. For information, call the Office of Student Life and Development at (612) 255-3111.

Opening French doors. New technologies and innovative approaches to language education will be emphasized in a Summer Institute for Teachers of French July 16-Aug. 9 at SCSU. Sponsored by the Department of Foreign Languages and Literature, the program will cost about \$200 for six graduate credits. For details, call (612) 255-4141.

Chapter One. The SCSU chapter of the Society for the Advancement of Management has been named top student chapter in the nation for 1983. The 140-member group competed with more than 300 student chapters for the honor, according to chapter president Deborah Tessmer, senior from Eagan. Criteria included involvement in service projects and academic achievement by members. The SCSU chapter placed second nationally in 1982. Dr. Crumpton Farrell, associate professor of management and finance, is chapter adviser.

(Part-time teachers, continued)

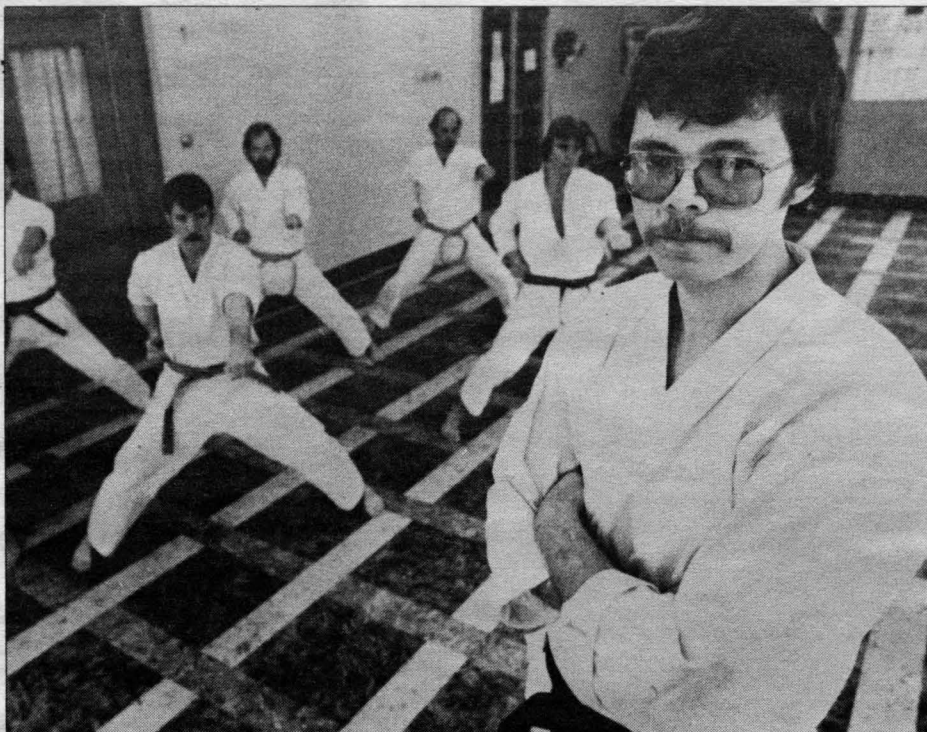
and time and motion study. Recent part-timers have included Karen Goodner, supervisor of technical data at the Sartell-based DeZurik Corp., and Dr. Alfred Lease, who retired in 1982 as dean of the SCSU College of Industry.

Cynthia Holm

"I learn a lot from the students I teach," explains Cindy Holm, manufacturing services supervisor at Amoco Engineered Plastics, Inc., in Mora. "Also, I teach because I like to know that I am doing something positive to influence the future of the business community."

Holm is another example of an alumna who returned to SCSU to teach. After receiving her bachelor's degree in 1978 in quantitative methods and information systems, and a master of business administration degree in 1980, Holm joined the SCSU faculty full-time, teaching marketing and marketing research.

After four quarters of teaching, she was lured away to Amoco Plastics, but has continued to teach part-time in the Department of Marketing and General Business. She is keeping her options open, and says one day she may return to teaching full-time, bringing with her



Jack Gustafson

the practical experience she gains in the business world.

Dr. L. Marilyn Stinson, associate dean of the College of Business, says professional practitioners are used in most academic departments, especially in high demand areas.

Other College of Business part-timers have included John Herges, vice-president of First American Bank in St. Cloud, and Mark Thelen, founder and president of Thelen Advertising, St. Cloud.

Jack Gustafson

When Jack Gustafson graduated from SCSU in 1974, he had a bachelor's degree in sociology and a passion for karate, which he studied as a member of the campus Karate Club.

Soon after graduation Gustafson began teaching karate part-time at SCSU and through the local community education program, while also working his way upward through the skill ranks.

Today, both he and his wife, Bev, are second degree black belts. Together they own and operate St. Cloud Karate. An SCSU undergraduate, Bev also teaches in the SCSU Japanese Karate Club.

Jack Gustafson feels that his background in sociology and his natural affinity for people have helped him in teaching others karate-do, the "way of the empty fist." He believes that total involvement of the mind, body and spirit in karate can lead to the development of one's character as well as one's body.

"For me, teaching is a way to pass on knowledge hundreds of years old that has helped me personally, and which I believe can help others," Gustafson explains. "I find each session just as exciting today as I did 10 years ago."

The SCSU Department of Health, Physical Education and Recreation employed 10 other adjunct faculty during the spring, including Debra Krippner, a specialist in the Human Performance Laboratory, and counselor David Huberty, who taught in the chemical dependency certificate program.

Elsewhere in the College of Education, recent adjunct faculty have included Barbara Berquist, principal of Hoover Elementary School in Coon Rapids, and Barbara Troolin,

coordinator of mentally handicapped services for the Wright-Sherburne Special Education Cooperative.

Dr. Kathleen Morris

Scott County Attorney Kathleen Morris received widespread attention in 1982 for her prosecution of the highly-publicized Cermak child sexual abuse case. Since then, she has been an outspoken crusader against child abuse, lecturing at Twin Cities law schools, to civic groups, and to professional law enforcement organizations.

Once a week during the spring quarter she cleared her busy calendar to drive nearly 200 miles from her Prior Lake home to SCSU and back to teach a course on enforcing incest and child abuse laws for the Center for Criminal Justice Studies. In addition to the usual undergraduates, her class also included a deputy sheriff, an assistant county attorney, and a county attorney investigator.

"I wanted to teach at SCSU because I believe so strongly that we must start educating people about the problem of child sexual abuse," Morris explains. "Those 25 people in the class, particularly the working professionals, are now one step ahead in preventing and detecting abuse."

She adds: "I also wanted to teach because I wanted to learn. The insights provided by students are tremendous."

Dr. Robert Prout, criminal justice center director, says hiring Morris was a real coup for SCSU because of her expertise in an increasingly important area of law enforcement and because she "provides an excellent role model for the female students. Criminal justice is a very sexist career area, and Kathleen proves that women can be successful in it."



Cynthia Holm



Dr. Kathleen Morris

Computer camps. SCSU will host three computer camps this summer for students 12 to 18 years old. A micro-computer camp for beginners is scheduled for July 2-6. Students with some computer experience may attend an advanced program July 9-13. For gifted students in mathematics, a Minnesota Talent Search advanced micro-computer course will be conducted July 16-27. All sessions meet from 9 a.m. to 3 p.m. Fee for each program is \$95. Registration deadline is one week prior to the starting date. For information, call Continuing Studies, (612) 255-3081.

Future of education is theme for annual Lindbergh Lecture

When the National Commission on Excellence in Education last year issued its report, *A Nation at Risk*, the shock waves were felt across the country. The commission maintained that "the educational foundations of our society are presently being eroded by a rising tide of mediocrity that threatens our very future as a nation and a people." Had an alien power imposed such mediocre educational performance on the United States, it would have been viewed as an act of war, the report declared. "As it stands, we have allowed this to happen to ourselves."

One of those who reacted strongly to the report was Dr. Ernest Boyer, president of the Carnegie Foundation for the Advancement of Teaching. One of America's best-known leaders in education, Boyer will speak on "The Future of Education in America" for SCSU's sixth annual Charles A. Lindbergh Memorial Lecture. The free public program is set for 9:30 to 11:30 a.m. Thursday, June 28, in Stewart Hall Auditorium.

A former U.S. commissioner of education and chancellor of the 350,000-student State University of New York, Boyer has been ranked for five consecutive years as one of the nation's leading educators by *U.S. News and World Report*.

His much-acclaimed book, *High School: A Report on American Secondary Education* (Harper and



Dr. Ernest Boyer

Row, 1983), provides a response to *A Nation at Risk* that is both brutally frank and cautiously heartening. In it, he proposes programs to facilitate mastery of English and foreign languages, increase the use of counselors, provide more parental participation, allow flexible scheduling arrangements that would allow students to work while going to school, establish a re-entry program for drop-outs, and require mandatory school or community service.

"If our progress is to be sustained, we must also increase school budgets, find better ways to educate the most disadvantaged students, and accept into the nation's life a new generation of Americans who can enrich our culture," he maintains. "This nation must also find ways to...acknowledge that parents and other members of the home should be full partners in the educational process. Above all, we must teach our children not just about the past but about the future, the shadowy lines of which are already beginning to take shape."

Responding to Boyer's SCSU presentation will be a three-member panel: Minnesota Commissioner of Education Ruth Randall; Dr. Kenneth Ames, dean of SCSU's College of Education; and SCSU graduate Thomas Girtz, a Staples High School teacher who was named 1982 Teacher of the Year by the Minnesota Education Association.

The Lindbergh Lecture series was established in 1979 as a public forum for the discussion of issues related to the quality of life. Previous programs focused on the energy question, bio-medical ethics, Reaganomics, hazardous waste, and victim's rights under the American criminal justice system.

The lectures are funded by private gifts. To contribute, contact the SCSU Development Office, (612) 255-3177.

Reorganization changes content, size of colleges

Four of SCSU's five colleges will be changed in content and size, effective Sept. 1, under a reorganization plan approved by President Brendan J. McDonald. Two of the colleges will have new deans.

First proposed by McDonald last November and slightly modified after testimony and hearings, the new arrangement retains all of the existing academic units but places many of them in different college groupings.

The reorganization is the first major change in the university's academic structure since 1970-71, when the present five colleges were organized as schools. They were renamed colleges when the institution attained university status in 1975.

There has been a disparity in the sizes of the colleges, which range from 26 full-time equivalent faculty positions in the College of Industry to 252 comparable positions in the College of Liberal Arts and Sciences. The new organization makes the colleges more equal in size.

"Our objective is to have a structure of colleges which is sensitive to contemporary opportunities and enhances a community of programs," McDonald said. "The academic design must allow disciplines to grow, respond to new programmatic opportunities, and be responsive to the growth and size dimensions of the institution."

The new organization will not change the composition of the Col-

lege of Business, which has five academic departments. Driver Education and Safety will be added to the nine academic units in the College of Education.

The revised structure:

College of Business (Dean James Marmas)--Research/Internships; Accounting; Business Education and Office Administration; Management and Finance; Marketing and General Business; Quantitative Methods and Information Systems

College of Education (Dean Kenneth Ames)--Child and Family Studies; Driver Education and Safety; Educational Administration and Leadership; Human Relations and Multicultural Education; Information Media; Health, Physical Education and Recreation; Athletics (Men's/Women's); Psychology; Special Education; Teacher Development.

College of Fine Arts and Humanities (new dean)--Art; English; Foreign Languages and Literature; Mass Communications; Music; Philosophy; Speech Communication; Speech Science, Pathology and Audiology; Theatre.

College of Science and Technology (Dean Louise Johnson)--Biological Sciences; Chemistry; Earth Sciences; Industrial Studies; Mathematics and Computer Science; Physics, Astronomy and Engineering Science; Technology and Industrial Engineering.

College of Social Sciences (new dean)--Criminal Justice Studies; Economics; Geography; History; Interdisciplinary Studies; Minority Studies; Political Science; Sociology, Anthropology and Social Work; Women's Studies.



It wasn't all fractions and equations for Princeton seventh graders Richard Escobar, left, and John Bloomfield, right, when they attended SCSU's annual Mathematics Contest in April. They found time to learn how to make test tubes by fabricating glass at a Chemistry Department exhibit. SCSU senior Tom Pederson, center, provided pointers. More than 2,100 junior and senior high school students from some 70 schools tested their skills in geometry, algebra and analysis in the contest. Some won prizes and scholarships.

ST CLOUD STATE UNIVERSITY

outlook

Volume 7, Issue 2 Summer 1984

Editor: Ray Rowland

Writer: Jan Turner

Designer/Artist: Sandy Barnhouse

Photographer: Tom Roster

Assistants: Linda Pechous

Mary Barron

Alumni/Development Information:

Tom Macgillivray

Sports Information: Mike Schroeder

Produced by the offices of Information Services and Alumni Services at St. Cloud State University, **Outlook** is published quarterly and distributed without charge to SCSU alumni, faculty, friends and parents of students.

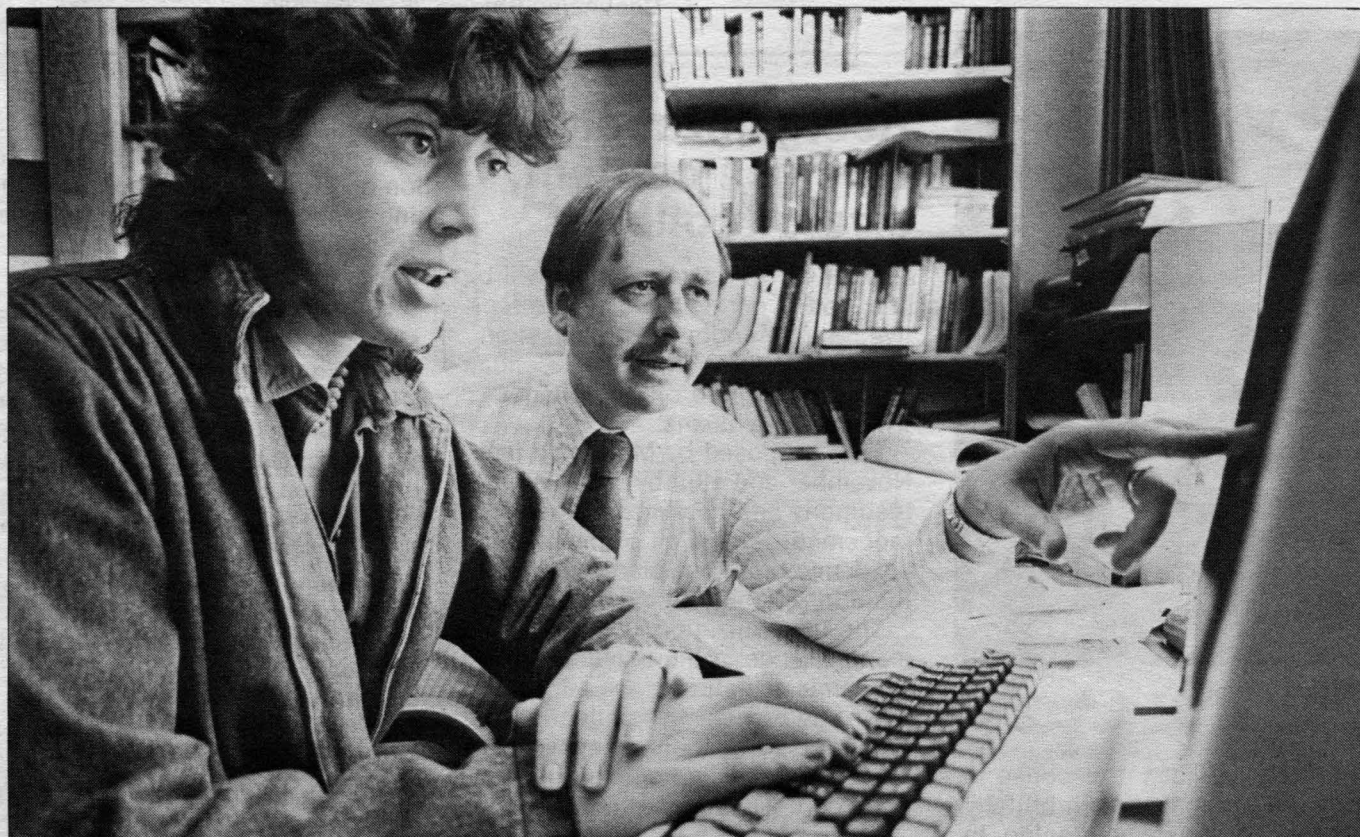
Outlook articles may be reproduced without permission if appropriate credit is given.

Please notify Alumni Services when you change your address. Households of alumni may receive more than one copy if children are enrolled.

SCSU is an equal opportunity/affirmative action employer and is in compliance with all state and federal laws prohibiting discrimination.

Checking the public pulse

Students conduct telephone surveys to sample opinion in central Minnesota



Dianne Corrigan, senior from Sauk Rapids, is helping Dr. Stephen Frank analyze results of SCSU Surveys conducted since 1980. Supported by a \$1,500 Bush Foundation grant

for joint student-faculty research, the project will result in a report of major survey findings to be published this summer.

When SCSU American government students polled residents of the Sixth Congressional District two weeks before the fall 1980 elections, the results looked like a bit of political clairvoyance: "We hit just about every race head-on," recalls Dr. Stephen Frank, poll director.

But the predictions didn't take a crystal ball—just telephones, telephoners, questionnaires, computers, and polling know-how.

Since then, SCSU has conducted 10 public opinion polls, primarily in central Minnesota, with the most recent completed in May. For a time sponsored by St. Cloud Radio Station WJON and called the "WJON Newspolls," the polls are now independent and have been rechristened the "SCSU Surveys."

Co-directors are Frank, associate professor of political science, and Dr. John Murphy, assistant professor of sociology. Co-sponsorship is by their two departments.

Frank says his motivation for developing a polling service at SCSU emerged from a personal interest in survey research, and a belief that students would benefit from hands-on experience. "In the study of government, survey research is probably the predominate methodology," he explains. "I wanted students to learn how the research is conducted, what the results mean, and how survey data can be used."

The response from the thousand-plus students who have spent hundreds of hours with phone to ear has been "overwhelmingly positive," Frank states. "About 70 percent of the students say the survey is a very valuable learning experience."

For each survey Frank and Murphy now have six to nine student directors, as well as over 100 telephoners from political science and sociology classes. Their participation "is a valuable job skill if they plan on careers in those two areas, or on other fields which use survey research, such as marketing, psychology, public administration or mass communications," Frank explains.

Other academic departments also may "piggy-back" their research questions on the SCSU Surveys, and local organizations and businesses may contract for services.

The bulk of the survey topics and individual questions are developed, refined and pre-tested by students. The final questionnaire usually consists of about 50 questions asked in 10 minutes. Computerization of the responses is handled by SCSU's Academic Computer Services.

Respondents, selected by a computer method called random digit dialing, usually number about 650 to 700 for each poll. Only 25 percent of persons called refuse to participate in the survey, according to Frank.

"In general, people like to share their opinions. Perhaps too much—some lonely people can go on at length. But once people realize that we're not trying to sell them aluminum siding or something, and that they will be treated with courtesy and respect, they are eager to participate."

The surveys, which because of a steady supply of student volunteers are conducted on a low budget, would cost from \$10,000 to \$30,000 each if done by professionals, Frank estimates.

But even if the price-tag isn't at

the professional level, the quality of the polling service is. Results of SCSU Surveys will continue to help the media, political leaders, government agencies and professional organizations feel the pulse of central Minnesota, an unpredictable and often-surprising rhythm formed of the opinions, beliefs, values and aspirations of the people.

SUMMER EVENTS calendar

June

27- Theatre: Summer season at Aug. Theatre L'Homme Dieu near Alexandria
(see story in this issue).

28 Lindbergh Lecture: "The Future of Education in America" by Ernest Boyer, 9:30 a.m., Stewart Hall Auditorium.

July

5 Lemonade Concert: Music and comedy by Great Lakes Navy Anchormen, 8 p.m., Campus Mall. Also Lemonade Art Fair, 11 a.m.-9:30 p.m., Campus Mall.

18-22 Concert: All-State Orchestra, conducted by William Jones, 2 p.m., Stewart Hall Auditorium.

August

5-11 Elderhostel Session I.

12-18 Elderhostel Session II.

To confirm events or obtain more information, call Information Services between 7:30 a.m. and 4 p.m. weekdays (summer hours) at (612) 255-3151. For details on conferences and workshops coordinated by Continuing Studies, call (612) 255-3081. For a schedule of fall sports events, write or call Sports Information Office, (612) 255-2141.

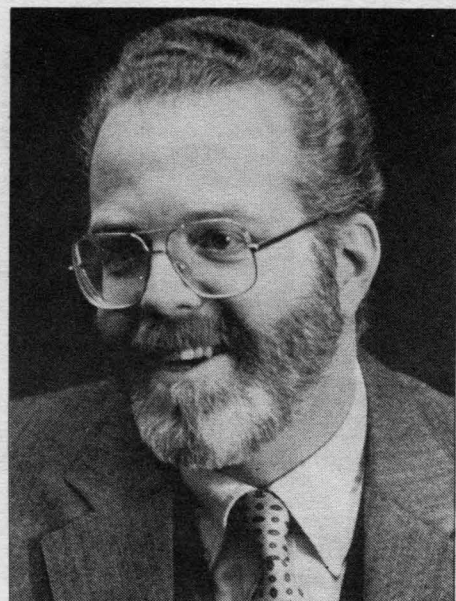
Polls show support for euthanasia, nuclear freeze, working mothers

What have SCSU Surveys revealed about the values, beliefs and political affiliations of central Minnesota residents?

Here are some of the major findings:

- Democrats outnumber Republicans by about 10 percent.
- Conservatives, liberals and moderates are in about the same proportion as they are nationally—36 percent conservative, 27 percent liberal, 35 percent moderate.
- For nearly half the population, abortion is acceptable if tests show that the unborn infant is genetically defective or diseased. Sixty-two percent approve of abortion if giving birth might cause the mother severe emotional damage.
- Sixty percent approve of euthanasia for the terminally ill.
- Three out of four people support a nuclear freeze.
- Seventy percent approve of women with pre-school-age children working outside the home. Eighty-three percent believe that a marriage with both partners working outside the home can be just as happy as a marriage with the wife at home.
- A large majority believes that high school education for college-bound students should emphasize these subjects (in descending order of importance): mathematics, English, U.S. government/history, science, business, health education, physical education, industrial arts/home economics, foreign languages, music, art.

Tutoring the talented. SCSU's Continuing Studies Office is coordinating gifted education programs through Minnesota Talent Search, an organization that identifies outstanding junior high school students. This summer's offerings, available by invitation only, are "Discover the Natural World Around You," "Philosophy for Children" and "Creative Writing." For information, call (612) 255-3081.



New vice president for academic affairs is Stephen Weber

Dr. Stephen L. Weber, dean of arts and sciences at Fairfield University in Connecticut, has been appointed vice president for academic affairs at SCSU, effective July 1. His selection was recommended to President Brendan J. McDonald by a campus search committee after conducting a national search for candidates.

"We are fortunate to attract such a well-qualified person to St. Cloud to fill this important position," McDonald said. "We look forward to the valuable contributions he will make to our academic programs and services."

During Weber's five years as a dean at Fairfield, his college initiated an honors program, added new concentrations in computer

science and international studies, created a writing center, supported faculty development, improved governance and encouraged service to the community.

Earlier in his career, Weber was assistant to the president at the University of Maine from 1976 to 1979. He also was a faculty member in the university's philosophy department from 1966 to 1979.

Weber holds a Ph.D. degree from the University of Notre Dame. He also spent two years in graduate studies at the University of Colorado.

He and his wife, Susan, have two sons.

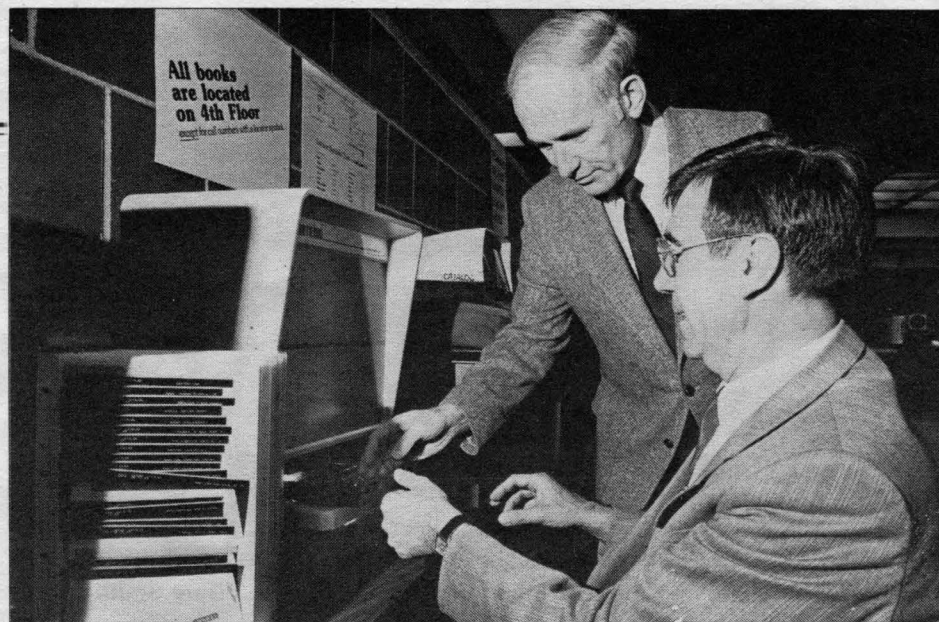
Dr. Barbara Grachek has been serving as acting academic vice president since Dr. David Johnson resigned last summer to become dean of Gustavus Adolphus College.

Rollicking musical opens new season at summer theatre

A lively Broadway musical, *Show Me Where the Good Times Are*, will open this year's season at Theatre L'Homme Dieu, a professional summer theatre near Alexandria affiliated with SCSU.

Eight plays will be presented during a two-month period at the air conditioned playhouse on Lake L'Homme Dieu, according to Harvey Paul Jurik, SCSU assistant professor of theatre, who will be creative director.

A combination of camp and school, stage and workshop, Theatre L'Homme Dieu has since 1961 offered students experience in all



President Brendan J. McDonald, left, shows French visitor Jean David how SCSU students obtain information at the Learning Resources Center, where an electronic retrieval system has replaced the card catalog. David is president of the University of Metz, which McDonald visited in 1982 and 1983. David's April itinerary included meetings with SCSU administrators, a visit to Control Data Corporation headquarters in Bloomington and a tour of the State Capitol.

areas of theatre, from publicity, stage management, set-building and lighting to playing supporting roles with professional actors. This year Jurik will supervise about 12 students, who will be eligible for scholarships or work-study funds.

"The program gives students an opportunity to work in a professional environment with people who are making a living in the theatre," explains Jurik. "Students are given a new assignment each week, so that they are continually exposed to different creative and technical challenges."

Plans already are being made for a "Silver Anniversary Season" for Theatre L'Homme Dieu in 1985, according to Jurik. A summer-long celebration is anticipated, including a reunion of L'Homme Dieu alumni.

The 1984 season, June 27 through Aug. 26, will feature light summer fare of comedy and mystery. Here is the tentative schedule:

- June 27- July 8 *Show Me Where the Good Times Are*, a popular Broadway musical
- July 11-15 *I Am a Camera*, a bitter-sweet comedy which later became the musical *Cabaret*
- July 18-22 *Ladies in Retirement*, by Edward Percy and Reginald Henham
- July 25-29 *The Star Spangled Girl*, a Neil Simon Comedy
- Aug. 1-5 *Bedroom Farce*, a British comedy
- Aug. 8-12 *Harvey*, the light-hearted classic about an invisible rabbit
- Aug. 15-19 *13 Rue de L'Amour*, a French farce
- Aug. 23-26 *Sherlock Holmes*, an intriguing mystery

Performances are Wednesdays through Sundays, and curtain time is 8:30 p.m. Tickets are \$7. For reservations, call Theatre L'Homme Dieu, (612) 846-3150, or the SCSU Theatre Department, (612) 255-3299.

Computer helps students make career choices

For most students, choosing a career is one of the most difficult choices they'll ever make. In attempting to define and select the "perfect" vocation, they will be forced to weigh personal considerations, such as interests and values, against the sometimes-harsh realities of hiring prospects, income potential and job security.

The key to choosing an appropriate career path is knowledge of self and knowledge of the world of work.

To help students make well-founded career decisions, the SCSU Counseling Center now offers an innovative computer software package called DISCOVER. Working alone, or with a professional counselor, a student can complete the DISCOVER program in about two hours. The information can then be stored for future accessing and updating.

DISCOVER has four components. The first, titled "Learning About Yourself," allows students to rate their abilities in 14 areas, such as leadership, management, mechanical, creative, social and scientific.

A second component, "Learning About Occupations," simplifies career exploration by grouping more than 12,000 occupations into 23 job families according to their involvement with data, ideas, people and things. DISCOVER also can provide information on individual occupations, such as the typical work tasks, national salary figures, training required and related careers.

The final components, "Searching for Occupations" and "Educational Information," help students match their interests, abilities and values with appropriate occupations and schools.

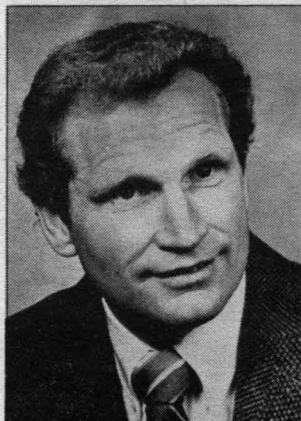


Dr. Kenton Frohrip, professor of music, directs SCSU's Jazz I Ensemble in a rehearsal during the group's "Good Will Tour" of Europe Feb. 25-March 11. The 20-member troupe performed in cities and at study centers that have a "special relationship" with SCSU or St. Cloud, according to Frohrip. The tour included concerts in Alnwick, England, and Aalborg, Denmark--where the university has residential study centers--and in Cramlington, England, and Metz and St. Cloud, France. The tour was financed by fund-raising efforts, grants and private gifts. Students also paid part of their expenses.

Athletic honors

Six more names added to SCSU Hall of Fame

To your health. "Healthy Aging" is the theme of SCSU's annual Institute on Aging June 5 in Atwood Center. Speakers include Sr. Mary Madonna Ashton, Minnesota commissioner of health. The institute is expected to attract nearly 700 health and mental health workers, gerontology and human service professionals, and older Minnesotans. Registration is \$25 at the door. In conjunction with the institute will be a professional development seminar June 6 on "Functional Family Therapy." For details, call (612) 255-3081.



Larry "Sam" Miller



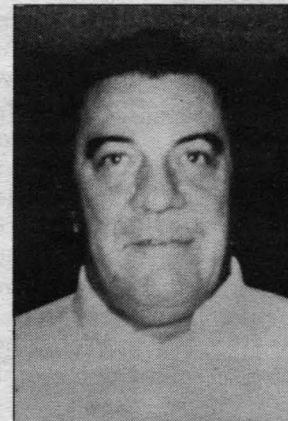
Ann Govednik Van Steinburg



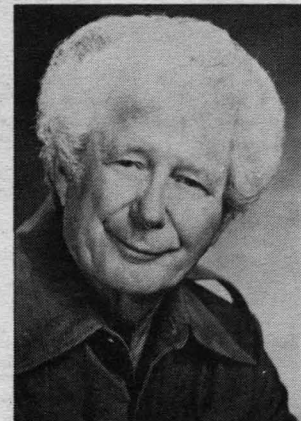
Gary Smith



Isidore "Izzy" Schmiesing



Vern Baggenstoss



Malcom "Mac" Doane

Five men and one woman are the latest additions to SCSU's Athletic Hall of Fame. The six new members will be honored at an induction program Saturday, Sept. 29, including a halftime ceremony during SCSU's conference football game with South Dakota State University at Selke Field.

Eight outstanding athletic achievers were chosen for the Hall of Fame in 1982 and 1983. They are: Edward "Eddie" Colletti, Louis "Louie" Filippi, Dr. Al Brainard, Dave Hazewinkel, Jim Hazewinkel, Warren Kasch, George Lynch, Van Nelson, Ken Novak and John Weismann.

Plaques commemorating members are displayed in the Athletic Hall of Fame Room in Halenbeck Hall. The program was established by Dr. John Kasper, former chairperson of the Health, Physical Education and Recreation Department.

To be eligible for nomination, a former player must have been an athletic letter winner at SCSU. At least 10 years must have elapsed since the candidate participated in SCSU athletics. For former coaches, at least five years must have passed since they were at SCSU.

The new inductees are:

Vern Baggenstoss, a letter-winner in basketball from 1956 to 1959 and an NAIA All-American in 1957 when he averaged 20 points and 22 rebounds per game. During his career, SCSU won four NIC basketball titles and he earned all-conference titles three times. His SCSU records: career rebounds (1,324), single season rebounds (457), single game rebounds (31). He lives in Minneapolis.

Malcom "Mac" Doane, who lettered in football, basketball, track and tennis during his student years, 1930-34. Later, he refereed Minnesota high school football and basketball games for 35 years. He was St. Cloud Technical High School tennis coach for 31 years and St. Cloud Apollo High School tennis coach for three years. He also supervised the municipal recreation tennis program in St. Cloud for several years. Retired, Doane divides his time between St. Cloud and Pharr, TX.

Larry "Sam" Miller, who lettered in football in 1961 and 1963 and in baseball from 1962 to 1965. A base-

ball centerfielder, he was an NAIA All-American and an all-conference (NIC) selection in 1964-65. Captain and Most Valuable Player of the 1965 team, Miller batted .346 during his career. His 81 hits in 234 times at bat included 14 doubles, 6 triples and 6 home runs. He is a school-teacher in Stillwater.

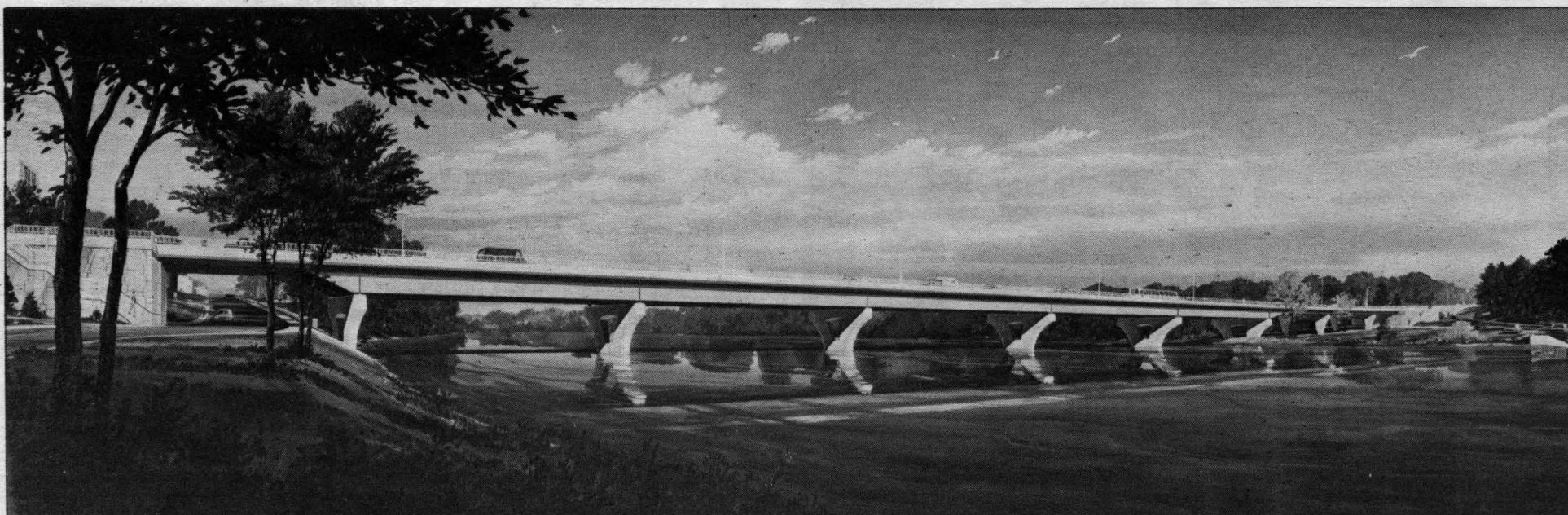
Isidore "Izzy" Schmiesing, a four-time basketball letter-winner, who was named an NAIA All-American in 1966. Schmiesing is fifth on the all-time SCSU scoring list with 1,295 points. His SCSU records: most points in one game (56), most free throws in one game (16), most field goals in one game (20), most free throws in one season (139), best field-goal percentage in one season (.631), highest points-per-game average in one season (22.5) and best career field-goal percentage (.602). He is a special education teacher in Little Falls.

Gary Smith, a four-time letter-winner in track and wrestling and an NAIA wrestling champion (191 pounds) in 1962-63. In track, he was NIC and NAIA District 13 shotput champion

in 1963. He was captain of both the wrestling and track teams in 1964. Smith is a member of the NAIA Wrestling Hall of Fame and the National Junior College Wrestling Hall of Fame (as an official). He lives in Columbus, IN.

Ann Govednik Van Steinburg, an SCSU student from 1934 to 1939, who competed as a swimmer in the 1932 Olympics in Los Angeles and the 1936 Olympics in Berlin. She placed sixth in the 200-yard breaststroke in 1932 and qualified for the finals in 1936 but was not permitted to participate because of an ear infection. She taught physical education and swimming at Washington Junior High School in Duluth for 17 years and swimming at the University of Minnesota-Duluth for four years. She is retired and lives in Duluth.

The Hall of Fame was established through proceeds from a book by Kasper, *The Husky Tradition*, a history of SCSU men's athletics. Contributions are needed to continue the program. To make a donation, contact the Development Office.

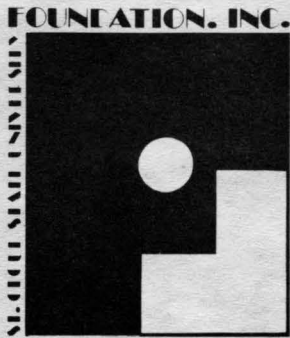


Remember the old Tenth Street bridge that has been part of the SCSU campus scene for more than 90 years? It's being replaced by this sleek new \$7.4 million structure for moving traffic across the Mississippi River in south St. Cloud. When completed in the summer of 1985, the larger, taller bridge will cross over First

Avenue South and under a pedestrian walkway near Halenbeck Hall. Its two lanes can be expanded to four lanes if required by traffic volume. The old bridge will continue to be used for pedestrian traffic until it is razed. A combination of federal, state, local and SCSU funds is financing the long-awaited project.

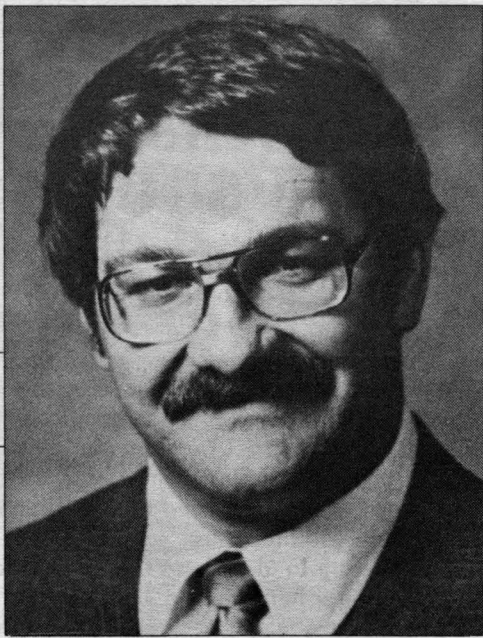


Don Watkins



Report to Investors

St. Cloud State University FOUNDATION, Inc.



Jim Langer

Watkins, Langer share leadership in annual campaign

Two strong supporters of SCSU shared leadership roles for the 1984 Community Campaign, which opened April 24.

Don Watkins, president of Tanner Systems, Inc., was general chairperson and Jim Langer, assistant vice president for commercial loans at First American National Bank, chaired the athletic division.

Goal for the annual fund-raising effort was \$150,000, including \$100,000 for athletics. General gifts could be designated for scholarships, instructional equipment or other major needs. Athletic funds will help meet expenses associated with SCSU's recent membership in the North Central Conference.

"SCSU is a wise investment for area residents," says Watkins. "If you look at the university as a business, you realize that it is well-established and has an excellent outlook. Over the decades, the university has continued to flourish as an educational, cultural, recreational and athletic resource for the community."

Watkins has been involved in numerous local fund drives, including campaigns for the YMCA, St. Cloud Hospital, Boy Scouts and Stearns County Historical Society. In 1973 he received an SCSU Alumni Service Award. Watkins is a founder and charter member of the SCSU Presidents Club and has served as president of Husky Hustlers. He also has been president of the St. Cloud Rotary Club, St. Cloud Jaycees and St. Cloud Area Chamber of Commerce. In 1981 he received a Citizen of the Year Award from the St. Cloud Kiwanis Club.

Langer played professional football for 12 years, including 10 years with the Miami Dolphins and two years with the Minnesota Vikings. He participated in three Superbowls.

"I believe it is important for SCSU to be involved in a level of intercollegiate athletics that can bring national recognition to the university and to the community," Langer says. He pointed out that NCAA Division II championship games are broadcast on national television.

Last year's Community Campaign raised about \$130,000, of which \$52,000 went to athletics. Chairperson was Jack Amundson, managing partner in the St. Cloud accounting firm of McMahon, Hartmann and Amundson.

Assisting Watkins and Langer in this year's campaign were 14 team captains:

General Division

John Herges, vice president for commercial loans, First American National Bank; Ron Klaphake, executive director, St. Cloud Downtown

Development Corporation; Dennis Ringsmuth, president and general manager, Dain Bosworth, Inc.; Corrine Fritz; Andy Hilger, president, Radio Stations WJON and WWJO.

Athletic Division

Kent Bolsta, sales representative, May Printing Company; Bob Holmen, attorney, Holmen and Seifert; Ed Johnson, assistant principal, Technical High School; Dr. David Gilchrist, St. Cloud Orthopedics, Ltd.; Doug Holzkamp, vice president, trust division, First American National Bank; Sherry Newell, farm director, Radio Station WJON; Norm Seehusen, assistant vice president, St. Cloud National Bank; Dan Hagen, installment loan officer, First American National Bank; Royce Nies, associate vice president, Dain Bosworth, Inc.

Interest-free loans available to seniors

Interest-free loans from the John Buckman Loan Fund are now available to SCSU seniors preparing for careers as industrial studies teachers.

A Swedish immigrant, Buckman served under eight SCSU presidents, maintaining the university buildings and grounds from 1880 to 1919. The loan fund was initiated last year by his son, Carl Buckman, a former SCSU student who taught high school and college courses in Minnesota and Arizona before his retirement. Carl Buckman now lives in North Port, Fla.

The fund was established with the gift of a California bond valued at \$3,000. Recipients and loan amounts will be determined by the chairperson of industrial studies.

Applications and additional information about the loans may be obtained by contacting Dr. William Lacroix, chairperson of the Industrial Studies Department, at (612) 255-2128.

Through a bequest your will can help SCSU help others

Your will is one of the most important documents you will ever sign. Yet, over half the adults in the United States don't have one.

Your will can do many things for you, such as:

- Provide financial security for members of your family.
- Dispose of all property accumulated during a lifetime of effort.
- Benefit charities you think are worthwhile.
- Memorialize yourself and your life's work.

Because your will is so important, you want to be sure it is properly prepared. See an attorney. The modest cost of consulting a professional is one of the best investments you can make.

If you want to make a bequest to SCSU, you can use these words:

"I bequest the sum of \$ _____ to the St. Cloud State University Foundation, a non-profit organization, organized and existing under the laws of the state of Minnesota."

"We hope you decide to include such a bequest in your will," says Thomas Macgillivray, SCSU director of alumni and development, on behalf of the Foundation board. "We have an information booklet, *Fifteen Ways to Plan Your Charitable Gift*, which we will send on request at no charge.

"We would like to help you make your will a source of pride and of lasting significance. You perform a great service when you include St. Cloud State University in your will.

"If you have made a bequest to the university, or plan to do so, please inform us by checking the statement on the request form, or in some other manner. We need to know about your intentions as part of our planning. And we would like to be informed so that we can express our thanks to you."

Request for Brochure

Send me a copy of your brochure, *Fifteen Ways to Plan Your Charitable Gift*.

Name _____

Address _____

City _____ State _____ ZIP _____

Telephone _____

_____ I/we have included St. Cloud State University in my/our will.

Send to: Tom Macgillivray, Development Office, St. Cloud State University, St. Cloud, MN 56301

Huls gift increases music scholarship fund to \$90,000

An endowed scholarship fund for SCSU music students now exceeds \$90,000 as a result of an estate settlement in St. Cloud.

More than \$86,500 has been added to the Helen Steen Huls Scholarship Fund as a legacy from Fred Huls, who died last year. This amount has been combined with about \$3,500 already in the fund, according to Thomas Macgillivray, director of alumni and development. Invested earnings from the endowment are used for music scholarships.

Established by Fred Huls as a memorial to his wife shortly after her death in 1971, the scholarship fund already has helped several students prepare for careers in music and music education. The substantial increase in the size of the fund will provide more music students with larger awards, according to Dr. James Flom, chairperson of the Music Department.

Third and fourth year music majors at SCSU are eligible for the annual awards.

Scholarships are awarded on the basis of musical performance, academic competence and financial need. Auditions are conducted by music faculty members as part of the selection process.

Helen Huls was a vocal music instructor at SCSU for 43 years—from 1926 until her retirement in 1969. She was widely known in the Upper Midwest as a choral director, speaker, clinician and adjudicator for vocal competitions.

She studied the problems experienced by immature singers and published her findings in a book, *The Adolescent Voice*. She served as state president, regional governor and national vice president of the National Association of Teachers of Singing. She also was on the executive board of the Minnesota Music Teachers Association.

Before his retirement, Fred Huls was public relations director for a trucking firm.

Contributions to the scholarship fund are accepted by the Music Department and the Development Office. Checks should be made payable to the SCSU Foundation, which administers the endowment. For scholarship information, call (612) 255-3223.

Larson endowment will support annual leadership seminar

Dr. Raymond Larson is remembered at SCSU as a man committed to leadership in industrial studies and technology. He actively sought to increase ties between SCSU and industry, and between the university and high school industrial arts teachers.

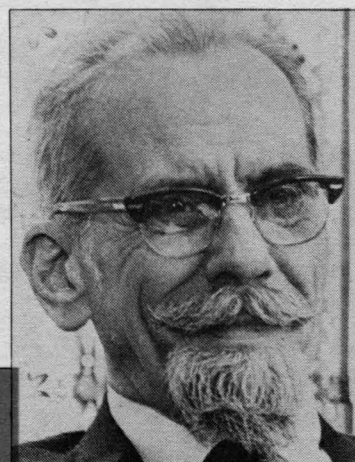
To keep Larson's memory and his dedication to industrial arts education alive, an endowed fund of \$3,000 was established in his name by his wife, G. Louise Larson, St. Cloud, and his colleagues.



Helen Steen Huls



Dr. Raymond Larson



Dr. Ruben Parson

Earnings from the endowment will be used to support an annual Ray Larson Leadership Conference for industrial arts teachers, beginning with the 1984-85 academic year.

"The concept of a leadership conference best embodies Dr. Larson's commitment to achievement and professionalism in industrial arts education," explains Dr. William Lacroix, industrial studies chairperson. "The conference will bring together educators from throughout the state, and perhaps neighboring states, to discuss contemporary topics in the field."

Larson began a memorable career at SCSU in 1942. During the 1950s and '60s, he was chairperson of industrial arts and the Division of Arts and Music. In 1966 he was appointed director of the Institute of Industrial Education and Technology, which subsequently became the College of Industry, where he continued as dean until 1971.

Larson then returned to full-time teaching until his retirement in 1974. The endowed fund was established after his death in 1979.

Scholarship fund honors professor, benefits students

An endowed scholarship fund has been established at SCSU in memory of Dr. Ruben Parson, a former Geography Department chairperson who died in 1983. The fund was initiated with a gift of \$3,000 from Parson's wife, Mary, of Battle Lake, family members and memorials.

The first awards will be made in the fall of 1985 to seniors majoring in geography with outstanding academic records. Minimum amount for each award will be \$200.

Parson retired in 1973 after serving six years as a professor of geography at SCSU, including three years as department chairperson. Before coming to St. Cloud, he was a resource geographer at Northern Illinois University. He had also chaired geography departments at East Tennessee State University and Troy State Teachers College in Alabama. He was a retired lieutenant colonel in the Air Force Reserve.

Parson's publications included three editions of *Conserving American Resources*, a widely-used college textbook. A Russian translation of the book

was published in Moscow in 1969. Another book by Parson, published in 1980, is *Ever the Land*, a chronicle of his family's migration from Sweden to the United States.

"Dr. Parson was a good friend and an outstanding educator," says Dr. Lewis Wixon, Geography Department chairperson. "Through these scholarships, he continues to help students who demonstrate motivation and commitment to the field of geography."

University seeks more endowments

Interested in establishing an endowed fund at SCSU?

Endowments can be used for scholarships, chaired professorships, loan programs, annual conferences, etc. Income is derived from earnings on investments.

Endowed funds at SCSU currently total \$425,000. Your support can help raise that amount beyond the half-million dollar mark.

For information, contact Tom Macgillivray, Director of Development, 210 Administrative Services Building, St. Cloud State University, St. Cloud, MN 56301. Or call collect (612) 255-3177.

Gifts-in-kind help university, donor

In addition to monetary gifts, SCSU accepts gifts-in-kind that can help the university while providing tax advantages for the donor. Some in-kind gifts are received directly by academic departments. Others are channeled through the SCSU Foundation.

In 1983, in-kind gifts totaling \$377,123 were reported through the Foundation. Included were major contributions, such as 125 acres of land by Glanville Smith for biological field studies, automobiles by Baston Chevrolet and Klein Oldsmobile-Cadillac for intercollegiate athletics, and a memory typewriter by Marco Business Products.

Among gifts-in-kind sought by the university are works of art, investment properties, special book collections, sophisticated laboratory equipment and photographic supplies.

For a "needs list," contact the SCSU Development Office.

Gift-in-Kind Donors

Americanna Inn
Ferne Atwood
Baston Chevrolet Co.
Bower Office Supply
Eastman Kodak Company
Fuji Photo Film USA, Inc.
Bruce A. Hitman
Holiday Inn
Intel Corporation
International Studies
Klein Oldsmobile Cadillac, Inc.
Keith Knutson
Gerald Lavoie
Marco Business Products
Mathew Hall Lumber Company

Norma Mehmel
Minnesota Mining and
Manufacturing Foundation
Osseo Photo Lab
Pako Corporation
Photo Marketing Assn.
SCSU Stores
Siecor Corporation
Glanville Smith
Steven K. Strandemo
Roland Stromborg
Sunwood Inn
Tektronics, Inc.
Tonka Toys
X Rite Company

Endowed Funds

Therese and John M. Adams
C. L. Atwood Scholarship
Applegate Loan Fund-Endowed
Athletic Hall of Fame
Dorothy Barker Scholarship
Roger Barrett Scholarship
Nick Begich Scholarship Fund
Biology Endowed Fund
Merl and Dudley Brainard
Luther Brown Scholarship
John Buckman Loan Fund
Myrl Carlsen Fund
Francis Colvin Memorial Scholarship
Clair and Doris Daggett Scholarship
Charles Emery Fund
David J. Ernest Scholarship
Mark Foerster
George Friedrich Memorial Fund
Ruth Gant Scholarship

Elio Gower Scholarship Fund
Grunerud Educational Administration Scholarship
James and Muriel Grunerud Scholarship
Barbara Gunderson Scholarship
Jackie Hanson
Ralph Heimdahl Memorial
Helen Steen Huls Memorial Scholarship
Sheila (Wilkin) Kerber Memorial
Fred J. Klein Scholarship
John Laakso Scholarship
Ray Larson Endowed Fund
Charles Lindbergh Lecture Series
Carol Loberg Fourth Calvary
Local 753 Scholarship Fund
Herbert P. Lohrman Scholarship
Ruth Leinonen Marmas Memorial Fund
Math/Computer Science Endowed Fund
Richard and Alice Barg Meinz Fund
Vernon and Ardis Mork Scholarship

Non-Traditional Student Scholarship
Optimist Club Scholarship
Ruben L. Parson Scholarship
Christine Rehwalder Scholarship
David Renslow Memorial Scholarship
Ronald and Eleanor Riggs Fund
Lewis R. Royer Craft Award
Scandinavian Lutheran Scholarship Fund
Maybelle Smith Scholarship
Dave Sorensen Scholarship Fund
Theatre L'Homme Dieu Scholarship
Neil Thompson Memorial Scholarship
Harvey Waugh Memorial Scholarship
Susan Lynn Webb Memorial Scholarship
Dorothy Weismann
Pamela Weiss Memorial Fund
Alice and Robert Wick Scholarship Fund



These are the people who decide how SCSU Foundation funds are used to benefit the university. They are members of the Foundation board of directors. Pictured, from left, seated: Rose Moran, secretary (ex-officio); Alice Wick; Jan Watkins, vice president; standing: Walt Larson; Al Didier; Lee Hanson; Jack Amundson; Dr. Roland Stromborg; Harry Olson; Brady Watts, treasurer

(ex-officio); Richard Lord; Earl Henning. Not pictured: Jack Nelson, president; Don Schroeder and Dr. David VanNostrand. Newly elected to the board are Ron Klaphake and Dr. Larry Sundby. All members live in the St. Cloud area except Schroeder, whose home is in Wayzata.

Presidents Club

Members give \$1,000 or more annually for 10 years or \$1,000 or more annually for an annual membership. \$500 is to be undesignated.

Scott and Wendy Jo Abbey Bankers Systems, Inc.
Brutger Companies, Inc.
Bursch Travel Agency, Inc.
Champion International Corporation Container Division
Coborn's, Inc.
First American National Bank
Franklin Manufacturing Co./White Consolidated General Signal/DeZURIK
Charles J. and Bonnie Graham Gronseth Directory Service, Inc.
James A. and Muriel Grunerud
Lee Hanson
Earl Henning
William W. and Charlene Holes
Jack Frost, Inc.
Brendan and Vernie McDonald
McMahon Hartmann Amundson and Co.
Timothy J. Murphy
Jack E. and Cathy Nelson
Richard and Ann Quinlivan
Dennis M. and Karol Ringsmuth
John M. and Nancy Spanier
Roland and Ruth Stromborg
St. Cloud Newspapers, Inc.
St. Regis Paper Company
Don and Jan Watkins/Tanner Systems
Jerry Thayer
David and Catherine Van Nostrand
Vision Ease Corporation
Robert H. and Alice M. Wick
Jerome and Diane Woit
Zapp National Bank

University Club

Members give \$500 or more annually. The entire gift may be designated.

Alexander Grant and Company
Americanna Inn of St. Cloud
Arthur Anderson and Company Foundation
Alan A. Atwood
Bankers Life Co.
Baston Chevrolet Company
Bell Laboratories
John and Pat Berling
J. Paul Bolduc

Cathryn A. Brown
Camera Shop
Cargill Incorporated
Central Minnesota Arts Council
Cinema Entertainment Corp.
Coopers and Lybrand
Clair E. and Doris E. Daggett
Drewry Photocolor Corp.
Eastman Kodak Company
Lane G. Erickson
Ernst and Whinney Foundation
Fingerhut Corporation
Fireman's Fund Insurance Company Foundation
First Bank of St. Cloud
Fourth Calvary Assn.
Fuji Photo Film USA, Inc.
General Mills, Inc.
Arthur and Barbara Grachek
Connie and Gary Grittner
Hazel B. Hansen
Esther B. Heimdahl
Herberger's, Inc.
Andrew Hilger
Holiday Inn of St. Cloud
Dennis J. Holland
Estate of Fred A. Huls
Intel Corporation
J. C. Penney Co., Inc.
Jack Eckerd Corporation
Kirby Company of St. Cloud
Klein Oldsmobile-Cadillac, Inc.
Cy Kuefler
G. Louise Larson
Walter G. Larson
Larson Allen Weishair Company
Horwath Lavenhol
Norbert F. Lindskog
Tom H. Luby
Main Hurdman Co.
Marco Business Products
May Bowle Benefit
McGladrey Hendrickson and Co.
Miller Pontiac
"Minnesota" - Cliff Sakry
Minnesota Association of Realtors Education Foundation
Minnesota Chapter EDP Auditors Assn.
Minnesota Governmental Appraisers
Minnesota Mining and Manufacturing
Robert E. Myers
Northern States Power Company
Norwest Bank of Sauk Rapids
Norwest Bank of St. Cloud
Osseo Photo Lab
Pako Corporation
Ruben L. Parson Memorials
Peat Marwick Mitchell Foundation
Photo Art Science Foundation

Press Bar and Cafe, Inc.
Quinlivan and Williams, Attorneys
Red Carpet
John M. Schulzetenberg
Sears Roebuck and Company
Security Federal Savings and Loan
Seven-Up Bottling Company
Side Bar and Cafe, Inc.
Siecor Corporation
Martha and William E. Slavin
St. Cloud Medical Group
St. Cloud National Bank and Trust
St. Cloud Sertoma Club
St. Cloud Tire and Tread Company
St. Cloud Williams Fund
Florence Swanger
Telex Communications, Inc.
The Bar
Touche Ross and Co
Tri-County Abstract
Viking Coca-Cola Bottling Co
Voigt's Motorcoach Travel, Inc.
William B. and Joan Webb
X Rite Company

Century Club

Members of the Century Club before 1984 gave \$100 to \$499. In 1984 Century Club members will give \$100 to \$249. The entire gift may be designated. For 1984, a Deans Club has been initiated. Members will give \$250 to \$499.

Joan L. Alleckson
James L. Altermatt
Alumni Association of SCSU
American Sharecom, Inc.
Kenneth A. and Marilyn L. Ames
Alan Anderson
Bob Anderson
Don Anderson
James W. Anderson
Anderson Trucking Service
Ludwig J. Andolsek
Julie R. Andrzejewski
Angushire Golf Course
Anonymous
Dwain W. Applegate
ARA Services
Bachman Jewelers
Barbers Hairstyling
Douglas Charles Barclay
Dorothy and Hugh Barker
Mary Jo Bartos
Charles J. Basch
Donald J. Bechtold
Benusa TV and Appliances, Inc.
Philip Bergstrom

Joseph H. Beste
Sanford Bettcher
Bill's Beverage Company
Alice Binger
Paul W. and Ruth J. Bixby
Howard W. Bohnen
James D. Bonneville
Patrick J. Boran
Bower Office Supply
David A. Boyce
A.F. Brainard
Charles D. and Laurel D. Brainard
Edward and Muriel Brainard
Thomas R. Braun
Ethelyn E. Brooks
Frank T. Brown
Anthony J. Buhl
Harlon T. Buisman
Roger A. Bye
Byerly's Incorporated
L. Ruth Cadwell
Ronald E. Carlson
Tom Carlson
William D. Carlson
Dale R. Carmichael
John H. Carpenter
Ralph W. and Linda M. Carr
Diane Clarke Carter
Central Collection Service, Inc.
Central McGowan, Inc.
Church of Latter Day Saints
W.E. Clemens
Robert L. Coard
Cold Spring Cleaning Center
College Of Business Alumni
Edward M. Colletti
Ray and Phyllis C. Collins
Conlon Construction Company
Continental Press, Inc.
Richard E. Conway
Anita Corrigan
Daniel Cote
Crossroads Center Merchants Assn.
Kent Dahlquist
Dain Bosworth, Inc.
Kathryn Friedrich Davis
Dayton's
Deluxe Check Printers Foundation
Irvin P. Deneen
Design Systems, Inc.
John Arthur Dixon
Theodore and Kathleen Doe
Patrick Dolan
Michael H. Donohue
Dennis M. Drake
Alyn N. Dull
D.W. Hutt Consultants, Inc.
Robert and Gail Earles
East Side Glass Company
Charles L. and Shirley S. Echols
Eich Motor Company, Inc.
Mark G. Eisenschenk
Craig and Kristi Elliott

Bruce W. and Kathleen A. Ellis
Marie K. Elsen
LaWayne Enke
Paul C. Ernst
Janese Marie Evans
Wayland L. Ezell
Dennis M. Fabel
Anna M. Fagerlie
Dennis C. Fields
Fitzharris Athletic
James Flom
Clarence Fogelstrom
Carl Folkerts
Fox and Company
Senator Mel and Donna Frederick
Fredric Wemlinger and Associates
Ruth Gant
Agnes C. Gaumnitz
Andrew B. George
Curtis Ghylin
Wayne M. Gildseth
Kenneth W. Gilliver
Merton Glover
John H. Grams
Granite City Jobbing Company, Inc.
Granite City Ready Mix, Inc.
John Graves
Greater Mpls. Area Board of Realtors
Robert W. Greeley
Alan Greig
Alfred H. Grewe Jr.
Dorothea Ohs Griffiths
Ralph Gundersen
Shari L. Gunderson
Diane L. Guse
John J. and Viki Gust
Richard G. and Mabeth S. Gyllstrom
Martha Hahn
Delaine J. Halberg
Laurie L. Halberg
Richard J. and Lynda J. Halbert
Reid O. Hans
Mike and Jane Lussenhop Hayman
Paul J. and Dorothy Heine
Sylvia E. Hitchcock
Harry and Janice Hoelscher
Marvin E. and Joyce Holmgren
Peter N. Holste
Douglas A. Holzkamp
Honor Society of Phi Kappa Phi
Vivienne Horkey
Kevin J. Hughes
Illies Nohava Heinen Property Management
International Business Machines
Robert J. Jackula
Dwight E. Jaeger
Thomas A. Janochoski
Leslie Jobes
Robert J. Johannes
Helen L. Johnson

James W. Johnson
Louise H. Johnson
Samuel K. Johnson
Johnson Bros. Wholesale Liquor
Robert D. Johnston
Richard N. Jones
Gerald and Karen Jurgens
Fred Kaiser and Susan Novak
Michael E. and Doreen M. Keable
Patricia Keller Baird
John M. and Doris Kelly
William H. Kemp
Robert D. and Lu Bell G. Kendall
Kendeco Supply Company
Kern Poganski and Hirschfeld, Ltd.
Karen L. Kimble
Richard J. Kisch
Ronald L. Klaphake
Keith Knutson
David P. Kosel
Paul Alan Kovach
John H. Kropp
Joseph Frank Kunze
William J. and Phyllis Lacroix
Lakeland Bakeries
Lantz Optical
Burnell L. Larson
John Laurich
Albert J. Lenarz
Terry Lee Lennon
Liberty Loan and Thrift Corp.
John G. Lieser
Michael Leonard Lieser
Lester E. Lindstrom
Local 753 AFSCME (AFL CIO)
Louis A. Loes
Frank E. Loncorich
Richard Lord
Dana Riggs Lowell
Vernon L. Ludeman
William A. Luksetich
Tom and Barbara Macgillivray
Harold V. and Dorothy B. Madison
Douglas and Karen L. Magnus
Lucille Maier
Elizabeth Maixner
Mark's Realty
Deborah Helen Ricke Mason
Mathew Hall Lumber Company
Irja McCarthy
McDowall Company
Alexander McWilliams
Richard C. and Mary Beth Megarry
Norma Mehmel
Conrad J. Meier
Fred Menninga
Robert P. Meyer
Ruth K. Meyer
John D. and Mary C. Michaels
Donald Miller
Miller Companies, Inc.

NOTE: Donor information applies only to the 1983 calendar year.

Century Club, cont'd

Minnesota Education Association Credit Union
Minneapolis Builders Assn.
Terry Montgomery
Monumental Sales Mfg. Co.
William T. Morgan
Vernon and Ardis Mork
Gordon Mortrude
Richard E. Murray
William Naegele
Nahan Printing, Inc.
Arthur F. and Ruth M. Nelson
J. M. Nelson
N. B. Nelson
R. C. Nelson
Richard W. Nelson Jr.
Van Nelson
William and Eleanor H. Nickles
Carl F. Nielsen
David W. Nielsen
Royce N. Nies
Gene M. Niswander
Mark R. and Lois H. Nordling
Northwest Teleproductions, Inc.
Norwest Audit Services, Inc.
Todd D. Novaczyk
Grace Nugent
Dennis J. O'Brien
O'Hara Brothers Pub
OK Cafe
Noel Olson
Wallace C. Olson
Harry Olson Jr.
Robert W. and Jeannie O'Neel
Bradley Julius Ost
Virginia L. Pagenkopf
Park Refuse Service, Inc.
Greg Dennis Paulson
Judy C. Pearson
Gary W. Pestello
Carl H. Peters
Thomas M. Peterson
Peterson's Flat Iron, Inc.
Dien Dai Phan
Phillips Systems
Ellen M. Pickering
Reuel H. Pietz
Piper Jaffray Hopwood, Inc.
Plains Art Museum
Anonymous
Plaza Park State Bank
Pleasureland, Inc.
Leroy P. Poganski
Robert R. Prochnow
Purity Dairy Foods, Inc.
William Radovich
Kenneth W. and Linda Raiber
Real Estate Sales, Inc.
Realty World East/West
Sherwood Reid
Kenneth M. Reither
Robert G. Riggs
William J. Riggs
Robert Half of Minnesota, Inc.
Ruth F. Rowe
Ray Rowland
Rubald Beverage Co., Inc.
Brad Rud
David D. Sadler
Joseph J. and Fern M. Sayovitz
Schabel Beverage Company
George H. Scharber
Dennis Schilling
Julie A. Schilling
Del W. Schluchter
William O. and Elnora M. Schmidt
Schmitt Foundation
Kenneth Schmitz
Shirley Schrader
Gordon D. Schrank
Tony and Mary Jane Schulzetenberg
Glenn and Sue R. Schwanberg
SCSU Accounting Club
SCSU Stores
Don C. Seaberg
George Serdula
Richard Shoen
Dorothy Simpson
Kent M. Small
Dale J. Smith
Gary R. Smith
Stephen D. Sommers
Virginia Sorensen
Eva L. Christie Spaeth
Michael M. Spanier
David Sprague

St. Cloud Ear Nose Throat Clinic
St. Cloud Fabricare Center
St. Cloud Orthopedic Associates, Ltd.
St. Cloud Realty, Inc.
James F. Stanek
Thomas R. Stanton
Florence and Ernest Stennes
Diane M. Stinson
Lawrence C. Sundby
Craig and Constance J. Swanson
Marvin Gerald Swedal
Sy Ray Plumbing and Heating
Merle H. Sykora
T and M Novelty
John Richard Tapp
Donald R. Teff
Erwin W. and Dorothy Templin
Tenth Street Bridge Club
Tenvoorde Motor Company
Herbert A. Terhaar
Philip Terry
Thomas L. Theiler
Thelen Advertising, Inc.
Tonka Toys
Mary Torpy
Janette and Carlton Trimble Jr.
Twin City Federal Savings and Loan
Myron S. and Connie Umerski
V.J.B. Company
Barry R. and Phyllis E. Van Buren
Benedict Sandy Vandell
Charles F. and Carol Vick
Charles Michel Villaume
Robert J. Voigt
James W. Vonderharr
Susan A. Wahl
Waldo's Pizza Joynt
Dennis Watkins
Brayton P. and Suzanne M. Watts
Jay H. Wein
John J. Weismann
John P. Weitzel
Fred R. Welsch
Stephen G. Wenzel
Phyllis and David Werness
West Central Board of Realtors
Gus B. Westerberg
Leon Whiting
Howard C. and Joan E. Wilkinson
William Randolph Hearst Foundation
Wimmer Opticians
Thomas J. Winkel
Blair M. Witt
Ramona Yunger
Dale Zaiser
William Zweiner

Parent Association



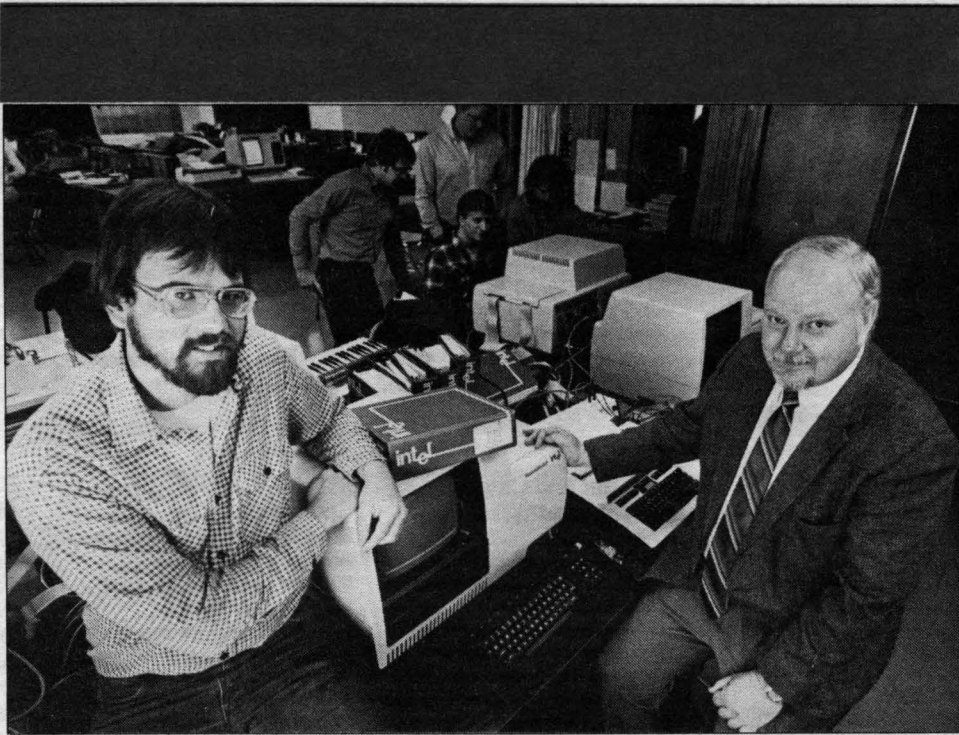
Neal L. Abraham
Merton C. and Diane M. Achterkirch
Warren and Judith Ahlers
Harold L. Albee
Richard E. and Joan Allen
Donald J. and Sharon C. Althaus
Joel M. Ampe
Clarence C. and Jayne D. Anderson
Fred G. Anderson
Marlen R. and Annette Anderson
Bernie and Mary Ann Ardolf
David and Barbara Arens
Gary B. and Violet V. Armstrong
Edna Athmann
Nannette Aylward Trebesch
David F. and Mary F. Badger
Evan F. and Paula M. Ball
Karen L. Bauer
R.D. and Avis A. Baylor
Duane S. and Margaret H. Beltrand
Thomas G. and Jackie Benick
Betty Jean Bennett
Roman D. and Ruth M. Blazei
Wayne A. and Janis Blossy
Garold E. and Darlene R. Briggs
Lamont Brine
Norbert H. and Ruth E. Brueske
Maxine Buehler
Marvin J. and Joan H. Bugnon
Michael J. and Mary L. Burdick

Edita V. Butler
Robert A. and Peggy Call
Wilmot A. and Carol J. Campbell
Donald E. and Marilyn L. Carlson
Philip S. and Luella S. Carlton
Daniel D. and Rosemary A. Casey
Madonna R. Cashman
Norman H. Ceaglske, Jr.
Carol E. Chapman
Gilbert L. and Janet L. Chowen
Dennis and Marilyn Christensen
John M. and Jean M. Christensen
Lowell E. and Betty Cole

Remi P. and Frances J. Grones
Jerome and Mary Jane Grow
Gerald M. and Maureen J. Guon
Donald W. and Doris M. Hansen
Donald and Patricia Hanson
Jacqueline Hanson
Gordon A. and Delena M. Happ
Richard and Jannette Harberts
William H. Hawes
Earl R. and Le Toile Hickey
Vesta Hicks
Edward Hill
Melvin and Sharon Hill
Howard H. and Barbara J. Hinz
Herbert and Jo Ann M. Hoffman

William F. and Rita J. Marty
Edward and Ladonna Masog
Arthur J. and Marcelia M. Mastel
John P. and Paula B. Mathews
Dennis E. and Sharon R. Mathison
Wayne F. and Judy Mattison
Henry A. McCabe
Duane S. and Wilma McGowan
William J. and Gail S. McLellan
William F. and Patricia McPherson
Calvin C. and Terry Meury
Arthur H. Miller
David and Joanne Miller

Jerald H. and Joan C. Richardson
James W. and Joanna Roberts
Vernon and Sharyn Robinson
John L. and Judy L. Rodberg
Arnold and Joyce Rosenberg
Marty P. and Patricia Rossini
Donald L. and Marian C. Rud
Lyle W. and Beverly D. Rude
Martha Ruskell
John D. Rylander
Lowell E. and Colleen H. Sabin
Rose D. Sanders
Henry L. and Kay Sanken
Gertrude J. Schaubach
Dennis Schilling
William O. and Elnora M. Schmidt
Paul Schmoll
Tony and Mary Jane Schulzetenberg
Don C. Seaberg
Donald A. and Joyce R. Sharp
Kelly J. Sherer
Christopher P. Shorba
Richard E. and Lou Anne Siefert
Gerald and Darlene Smith
Gordon and La Vonne Sorenson
Larry and Beverly Sorenson
Alois Spaeth
Fran M. Speikers
Gary and Sharon Spies
Jon C. and Pat Springer
Larry and Laima Stammer
Raymen A. Starkka
Donald W. and Agnes C. Steichen
Joyce Stelzer
Wayne and Shille Stevens
Harvey C. and M. Jean Stewart
Gerald L. and Barb Stickney
James A. and Phyllis T. Stratton
Harold J. and Frances M. Stroner
Joseph H. and Ann L. Strub
Donald A. and Betty H. Sturm
Elmer L. and Betty Swanson
Ralph and Gloria Swanson
Donald and Geraldine Teefy
Lawrence M. and Yvonne J. Terry



Computer manufacturers are contributing major equipment items for SCSU's new electrical engineering program. Assistant Professor Kevin Miller, left, and Program Director Bruce Ellis, right, display one of the seven Intel Series 4 work stations valued at \$200,000 and donated by Intel, a California firm. The company also gave a substantial

discount on purchases of additional work stations, an EPROM unit, a network resource manager and in-circuit evaluators. Other benefactors are CPT, Inc., of Eden Prairie, which donated five word processing stations valued at \$65,000, and Tektronix of Beaverton, Ore., which provided an equipment discount of \$40,000.

Morman and Louise Condit
Dale A. and Arlene J. Connolly
Vernon E. and Stella M. Corliss
Karen R. Countryman
Donald L. and Betty Lou Cravens
Jerome P. and Nancy J. Crowley
Timothy and Sandra Dahmen
Max W. and Terry Jo Dajnowicz
David L. and Diane Dammen
Mary Daniels
Wilson and Yvonne Deaton
Michael M. and Carol Demann
Richard Dendinger
James N. and Rose Denn
Arlene Depesa
Joe and Phyllis Derosier
Richard L. and Jean M. Deschrive
Marguerite Dillon
Robert H. Dillon
John H. and Anyce Ditter
David and Marjorie Dobosenski
Tom and Bev Donahue
William A. and Bernice M. Drier
Bernard and Michelle Drlaca
Phillip and Marilyn Duscher
Robert R. and Martha T. Dwyer
David A. and Carol Ann Dyke
David and Beverly Eberhard
Wiletha Eckhardt
Alvin Edelstein
William and Dorothy Ensign
Harvey J. and Ann M. Erickson
Margaret Erickson
John L. Erlandson
William and Erica Eschmann
David Felcyn
Jerry C. and Judy A. Figsenkau
Ronald and Belva Fish
Stephen R. and Marie C. Gadd
Kay and Dirk Gaspar
Victor E. and Ruth Gervais
Raymond D. and Janet M. Gibson
Sandra J. Gilbert
Lee E. and Nancy C. Gleason
Thomas and Laverne Gleason
Roger and Darla Mae Gonnerman
Patricia J. Goodrum
John and Shirley Graham
Howard and Sharon Groenke

William F. and Karen A. Hoernemann
Todd and Diane Hofteig
Lewis C. and Janice L. Holm
Gerald R. Holm
Joan K. Hopp
Lawrence and Martha Howe
Donald R. and Carolyn D. Huff
David M. and Sherrill L. Hunt
Melvin H. and Yvonne Jackson
Archie P. and Mary A. Jeanetta
Roberta D. Jellinek
Greg and Barbara Johnson
Larry E. and Marlene Johnson
Lloyd A. and Emma Jane Johnson
Marjorie Johnson
Victor Johnson
Ronald N. and Lenore Johnson
Ross E. Johnson
Wallace and Connie Johnson
Dale A. and Karen J. Jones
Judy Kampa
Bette Kearney
Bernard Keating
Mary R. and Eugene W. Kiecker
Judy Kilen
William J. and Anne K. Kluempke
Charles E. and Norma Knight
Dale Kohman
Wayne A. Kohnen
Mary E. Kollodge
Barbara Koroshec
Vicki L. Kramer
Nick and Nancy Kranz
Edwin C. and Helen M. Krawczynski
Richard A. and Lorna Kroger
Ervin C. and Rona Krueger
Walter A. and Donna Kuehl
Barbara and Ronald Labat
William R. and Judith K. Laton
Ronald R. and Kathleen D. Leduc
Eugene and Lois Leszczynski
Frank P. Lindell
Marlene M. Longpre
Dale J. and Mary Lungwitz
Donald R. and Grace L. Lyonais
Geraldine M. and Donald W. Maas
Gerald L. and Marge Mahon
Odell P. Marchant

Robert Land Janis P. Miller
Donald G. and Virginia Minette
Donald J. and Luzetta T. Mitchell
Harlan and Christine Mohn
Ruth Montain
R Keith and Miriam L. Mulford
Mervin J. and Margaret L. Mullen
James N. and Diane G. Muncy
Martha and Gary Needham
B William and Jean E. Nelson
David K. and Connie L. Nelson
Kenneth E. and Myrna M. Nelson
Neiland and Bonita Nelson
Delaand Bonnie Niemi
Philip J. and Marie A. Nistler
Carol A. and Robert S. Oldowski
James G. and Mary K. Olexa
Albert S. and Donna M. Olson
Walt and Kay Ostlund
Lee and Doris Pappenfus
James C. and Sandy Patterson
James and Eleanor Pavin
Ronald and Julie Pawlak
Wayne R. and Marlene C. Peckham
Ronald D. and Patricia R. Peters
William B. and Kathleen A. Petersen
Arden D. and Annella Peterson
Barbara J. Peterson
Darrell Peterson
David and Dorothy Peterson
Robert A. Peterson
Pat and Barb Pettley
James A. and Maryann I. Pierce
Lowell and June Plagge
Julie Ann and Robert L. Pochardt
Donald and Shirley Pohlen
Richard P. Pomeroy
Philip G. Pond
Richard D. and Inez Prowizor
Robert J. Rader
Douglas P. Rau
Howard and Wilma Reberg
Milton E. Reeve
Cletus D. and Marlys V. Reeves
Marvin B. and Lorraine D. Reiter
Reitmeier
Raymond G. and Patricia A. Renfors
Clyde M. and Mary Rishavy

Robert Tholen
James J. and Ann M. Thompson
Rosalia K. Thompson
Sydney P. Thompson
Norbert Torborg
Jerry and Marie Trafas
Leonard G. and Mary E. Tri
Sonja Tyler
Roger and Sharon Vikesland
John W. Vogelgesang
Louis J. Walechka
Lawrence E. and Leora Walsh
Donald T. and Joann Warn
Cornelius and Patricia Warzecha
Jean A. and John E. Weber
Milan and Lily Wehking
Gerald A. Wellik
Richard Welsh
Fred J. and Virginia Westphal
Thomas J. and Mary L. Whelan
Robert G. and Marjorie A. Wherley
Larry J. and Lana Williams
Jerome R. and Linda C. Wohlers
Richard D. and Kathy Wohlwend
Leander and Grace Wolf
Manfred R. Wormuth
Paul and Jan Wright
Alphonse and Rosemary Zierden
Val A. and Loretta Zweber

Memorial Gifts

Friends of SCSU often send contributions as memorials to deceased family members or personal acquaintances. These gifts are used to help students who need financial assistance. The family of each individual for whom a memorial contribution is received is informed by the Development Office. Deceased persons for whom donations were received as memorials from September 1983 through January 1984:

Marion "Bud" Bonestroo
Barbara Gunderson
Ralph Heimdahl
Sheila Wilken-Kerber
Jerry Koshiol
Marjorie Morse
Mr. and Mrs. I.J. Muggli
Howland H. Paddock
Ruben Parson
Lee Rausch
David Sorensen
David Terhaar
Susan Lynn Webb
Gig Young

Schulzetenberg heads fund drive for faculty, staff

Faculty and staff members have responded generously to an annual appeal for funds from the SCSU Foundation.

By early May the Faculty-Staff Campaign was approaching nearly \$30,000 in gifts and pledges, according to Dr. Anthony Schulzetenberg, chairperson. Last year's total was about \$28,000.

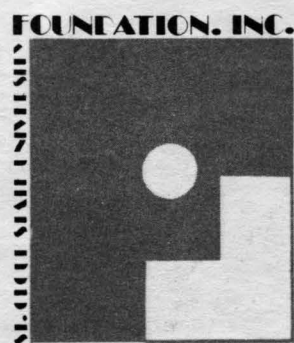
Schulzetenberg is a professor of learning resources and information media. He has been an SCSU faculty member since 1965. Twenty other faculty and staff members, pictured here and on subsequent pages, helped him conduct the campaign as captains.

Funds raised will go toward scholarships, instructional equipment, athletics, faculty professional development and the adult fitness program.

Faculty/Staff/ Emeriti Campaign

James T. Addicott
Thomas O. Allen
Terry Alliband
Kenneth A. and Marilyn L. Ames
Alan Anderson
Derwyn L. Anderson
Myron G. and Dorelyn Anderson
James W. Anderson
Allan R. and Mary Andreotti
Julie R. Andrzejewski
Rod Anfonson
Tony M. Au
Audrey A. Aufderhar
Duane H. Banister
Dorothy and Hugh Barker
Roger L. Barrett
Marilee Barrette
Lois M. Barron
Charles J. Basch
Richard and Virginia Kay
Baschky
Leland C. Batdorf
William B. Bates
Edgar A. Bavary
Robert Bayne
Robert W. Becker
Marlene Beecroft
Philip Bergstrom
John and Pat Berling
Sanford Bettcher
Linda R. Bettison
Regis J. Betts
Deborah M. Binsfeld
Howard A. Bird
Eugene C. and Mary M. Bjorklund
Lorimer R. Bjorklund
Virginia S. Blaske
Brian G. Boesche
Howard W. Bohnen
Charles and Mary Boltuck
David L. and Jeannine R. Boyer
A. F. Brainard
Thomas R. Braun
Wilbur A. Brewer
Allen L. Brink
Marcus C. Bruhn
Louis A. and Jeannette
Brunckhorst
Dee Dee Bruyere
Jaime Elizabeth Bryce
Scott and Lynn Bryce
Chester Buckley
Anthony J. Buhl
Gladys Burmaster
Lawrence R. and Doris L. Busse
Roger A. Bye
L. Ruth Cadwell
Paul E. Cairns
Charles E. Campbell
Debra L. Carlson
Kent F. Carlson
Ronald E. Carlson
John H. Carpenter
Ralph W. and Linda M. Carr
John and M. Elaine Carter
Ann M. Chaika
Janis M. Cimperman
Norman Ford Clarke
Robert L. Coard
Edward M. Colletti
D. Ray and Phyllis C. Collins
Henry A. Coppock
Richard L. Corliss
John C. Coulter
Mary B. Craik
Clair E. and Doris E. Daggett
Leland E. Davis
John W. and Terri Plese Deinhart

Richard Dendinger
R. John DeSanto
Rodney G. and Rebecca J.
Dobey
Janet Salk Donohue
Tom and Melodie Dukowitz
Alyn N. Dull
Robert and Gail Earles
Charles L. and Shirley S. Echols
William J. Ellingson
Bruce W. and Kathleen A. Ellis
Marie K. Elsen
Alice M. English
Arthur Erickson
George Erickson
George O. Erickson
Randy L. Evans
Karen Ewing
Tod Ewing
Wayland L. Ezell
Andrew Faith
Peggy Hall Farrah
Kathleen Farrell
Dennis C. Fields
Lucille I. Fillenworth
James Flom
Carl Folkerts
Bernadette M. Frie
Kenton R. Frohrip
Eva M. Gadberry
Gerald Gamber
David Gamble
Ruth Gant
Curtis Ghylan
Wayne M. Gildseth
Susan Gill
Dianne Glowatzke
June M. Goerner
Calvin W. and Alma C. Gower
Arthur and Barbara Grachek
Susan M. Grams
Alan Greig
David and Mary Ann Grether
Alfred H. Grewe Jr.
Larry L. Grover
James A. Grunerud
Ralph and Nancy Gundersen
Diane L. Guse
John J. and Viki Gust
Ann Guthmiller
Richard G. and Mabeth S.
Gyllstrom
Amde M. Habte
Delaine J. Halberg
Laurie L. Halberg
Abdulla A. A. Hanafy
Diane J. Hanson
Linda S. and Kurt Hanson
Catherine Harlow
Carmen W. Harper
Jessie Harper
Evelyn Hatcher
Mike and Jane L. Lussenhop
Hayman
Bonnie J. Hedin
David and Maureen Hellwig
L. Ladd and Joan D. Hemmer
Paul and Patricia Hoffman
Marvin E. and Joyce Holmgren
Mabel Holthaus
Joseph G. Hommerding
Alfred J. and Barbara Hopwood
Michael W. Huddleston
Robert J. Jackula
Joan Jacobson
Virginia L. Jacobson
Harlan J. Jensen
James W. Johnson
Louise H. Johnson
Monte Johnson
R. Warren Johnson



Chairperson: Anthony Schulzetenberg
Learning Resources and Information Media



William Rodgers
Marketing and General Business



Martin Kammermeier
Speech Science, Pathology and Audiology

Robert D. Johnston
Rick S. Jones
Debbie Josephson
Martin A. Kammermeier
George R. Karvel
John Kasper
Le Roy Kasper
Michael E. and Doreen M.
Keable
Debra Kellerman
Warren G. and Mary Ann Kelley
John M. and Doris Kelly
William H. Kemp
Robert D. and Lu Bell G. Kendall
Keith Kennedy
Nancy K. Kiekow
Norman Kittel
Keith Knutson
Randal D. Kolb
Gary A. Konsor
Clarence J. Koopmeiners
David P. Kosel
David C. Kramer
Inez Kronenberg
Albert H. Krueger
Barbara R. Kunze
Karen Kurz Riemer
William J. and Phyllis Lacroix
David R. Lahren
Linda L. Lamwers
Richard and Virginia K. Lane
Lucy L. Larson
Walter G. Larson
Gerald LaVoi
Dae Choon Lee
Helen E. Leisen
Vernon Leitch
Arnold V. and Sharon Deane
Lesikar
Leo Kin Hui Leung
Kathleen P. Lewandowski
James F. and Ruth M. Lewis
Richard D. Lewis
Standley E. Lewis
Harold and Mary B. Lieberman
Lester E. Lindstrom
Judith K. Litterst
Frank E. Loncorich
Vernon L. Ludeman
William A. Luksetich
Judith Ann Lust
Tom and Barbara Macgillivray
Terrence J. MacTaggart
Russell D. Madsen
Douglas and Karen L. Magnus
Lucille Maier
William R. and Charry K.
Marczewski
James G. Marmas
Noel Martin
John E. Mason
Doris A. Matter
Howard Matthias
Pamm and Doug Mattick
Madonna N. Mattocks
Jack F. and Anna G. McKenna
Maureen McCarter
Brendan McDonald
Jeanne E. McLellan
Alexander McWilliams
William J. Meissner
John L. and Virginia Melton
Fred Menninga
Michael Gerald Meyer
Ruth K. Meyer
Donald Miller
Eleanor S. Miller
Kevin Miller
Anita Mills
Sally Milstroh
Lula L. Mische
Dale M. Monson
Robert Montesano
Terry Montgomery
Ruth W. Moon
William T. Morgan
David Mork
Vern and Ardis Mork
Frank Morrissey
Gordon and Thelma Mortrude
Steven E. Mudd
Barbara A. Mueller

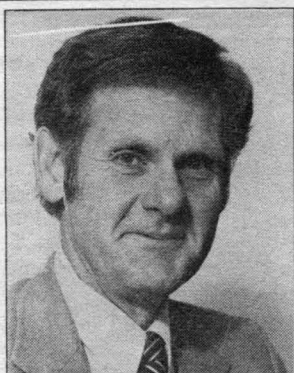
Janet Mueller
John E. and Mary R. Murphy
Richard E. Murray
Ellen Nappa
Francis J. Neidermeier
Arthur and Ruth Nelson
J. M. Nelson
Richard E. Ness
Delrita Norman
Grace Nugent
Dennis L. Nunes
William Nunn
Mary A. O'Donnel
Jeanine Okland
Harry Olson Jr.
Noel Olson
Don H. Otto
John Oxtom
Ronald G. Perrier
Donald G. Peterson
George Petrangelo
Caroline Olig and Lawrence
Pfleger
Lee and Kristine Pflipsen
Alan M. Phillips
Mary H. Phillips
Reuel H. Pietz
Virgil Plath
Edward J. Pluth
Fred G. Polesak
Wendell M. and Carol M. Pou
Robert R. Prochnow
Robert S. Prout
Boyd A. and Dixie D. Purdom
William Radovich
Jennifer L. Rahe
Kenneth W. and Linda Raiber
Rex O. and Linda A. Raine
Vema Louise W. Ramacher
Keith and Margaret Rauch
Barbara B. Raymond
Fred and Sandra Reese
Rose and Rudy Reha
Charles Rehwaltd
Sherwood Reid
Douglas F. Risberg
Lora and Richard Robinson
William C. Rodgers
Francis J. Roehl
Rosemary F. Roehl
Ray Rowland
Gayle L. Ruesch
Mary F. Russell
David G. Rydberg
John D. Rylander
Patricia A. Samuel
Carl C. Savage
Larry L. Schafer
Diane S. Schellinger
Constance L. Schiff
Carl T. and Diane E. Schmitt
Ervin R. Schoppe
Shirley Schrader
Gordon D. Schrank
Francis B. Schreiber
Tony and Mary Jane
Schulzetenberg
Ruth H. Schutz
Anthony E. Schwaller
Glenn and Sue R. Schwanberg
Charles W. Seefeldt
Jerome Seibert
George Serdula
Gaylene Shafer
Dena and Kenneth Quilty Shenk
George W. Shurr
Donald E. Sikkink
Judith A. Simons
Dorothy Simpson
Eleanor E. Simpson
Mike Simpson
Dennis W. Sjogren
Lawrence Smelser
Virginia Sorensen
David Sprague
Russel D. and June Spsychala
James F. Stanek
Clyde M. and Marlene M. Stangl
Thomas E. and Joyce Stein
Florence and Ernest Stennes
James and L. Marilyn Stinson
Glenn M. Stocker
Marcia A. Summers

Lawrence C. Sundby
Lucetta A. Supan
Dale L. Swanson
Alf A. Swenson
Merle H. Sykora
David M. Targan
Carol A. Tembreull
Erwin W. and Dorothy Templin
Philip C. and Jo Marie Tennison
David J. Thomas
Ruth M. Thompson
Elaine M. and Stephen V. Thrune
F. G. (Jerry) Torborg
Judith L. Torrence
Brenda K. Tritz
William L. and Terry Tschida
Dianne C. Tuff
Addie Turkowski
Janice A. Turner
Myron S. and Connie Umerski
Michael Vadnie
Barry R. and Phyllis E. VanBuren
Everett Vanakin
Paul H. Vaughter Jr.
Charles F. and Carol Vick
Francis H. and Ludmila Voelker
Jay A. and Erika W. Vora
Ivan W. Waktins
Janet Warnert
Susan Christine Waterman
Wallace Watson
Brayton P. and Suzanne M. Watts
Robert G. Waxlax
Mary and Howard Weise
Edward A. Weiskopf
John Weismann
David E. Welle
Darrell and Enola R. Wentworth
Eloise M. and Jerry Westby
James and Elena White
Dee Whitlock
Robert H. and Alice M. Wick
Steven Frank Williams
Virginia Williams
Lewis G. Wixon
Michael J. Yapuncich
Mary Yoos
Ramona Yunger
Judith Ann Zaczkowski

Businesses and Corporations

Alexander Grant and Company
American Legion Post 76
American Sharecom, Inc.
Americanna Inn
Anderson Trucking Service
Angushire Golf Course
ARA Services
Bachman Jewelers
Bankers Systems, Inc.
Barbers Hairstyling
Bell Laboratories
Benusa TV and Appliances, Inc.
Bill's Beverage Company
Bower Office Supply
Brutger Companies, Inc.
Byerly's Incorporated
Camera Shop
Cargill Incorporated
Central Collection Service, Inc.
Central McGowan, Inc.
Champion International
Corporation Container
Division
Cinema Entertainment Corp.
Coborn's, Inc.
Cold Spring Cleaning Center
Conlon Construction Company
Continental Press, Inc.
Country Manor Apartments
Crossroads Center Merchants
Assn.
Currey's Photography
Cy Reinert Construction
Dayton's
Design Systems, Inc.
Dietman's Food Market, Inc.
Dino's
Drewry Photocolor Corp.
East Side Glass Company
Eastman Kodak Company

Eich Motor Company, Inc.
Fingerhut Corporation
First American National Bank
First Bank of St Cloud
Fitzharris Athletic
Fox and Company
Franklin Manufacturing Co./
White Consolidated
Fredric Wemlinger and
Associates
Fuji Photo Film USA, Inc.
General Mills, Inc.
General Signal/DeZURIK
Gentleman's Quarters
Geyer Rental Service
Granite Book and Bible House
Granite City Jobbing Co., Inc.
Granite City Ready Mix, Inc.
Gronseth Directory Service, Inc.
Heartland Ski
Herberger's
Holiday Inn
Illies Nohava Heinen Property
Management
Intel Corporation
Jack Eckerd Corporation
Jack Frost, Inc.
Johnson Bros. Wholesale Liquor
Kendeco Supply Co.
Kern Poganski and
Hirschfeld, Ltd.
Kirby Company of St. Cloud
Lakeland Bakeries
Lantz Optical
Larson Allen Weishair Company
Laventhol Horwath
Lenarz Realty
Liberty Loan and Thrift Corp.
Main Hurdman
Marco Business Products
Mark's Realty
Marsh Drugs on Seventh
Mathew Hall Lumber Company
May Printing Company
McDowall Company
McGladrey Hendrickson and Co.
McMahon Hartmann Amundson,
and Co.
Metzroth's Clothing Company
Midway Iron Company, Inc.
Miller Companies, Inc.
Miller Pontiac
Minneapolis Builders Association
Minnesota Education Association
Credit Union
Minnesota Production
Minnesota Chapter EDP
Auditors Assn.
Mister Steak Restaurant
Moderow's Paint
Monumental Sales Mfg. Co.
Ron and Mary K. Morton
William Naegle
Nahan Printing, Inc.
Northern States Power
Company
Northern Wire Products, Inc.
Northwest Teleproductions, Inc.
Norwest Audit Services, Inc.
Norwest Bank of Sauk Rapids
Norwest Bank of St. Cloud
O'Hara Brothers Pub
OK Cafe
Orth's First Ward Market
Photo Lab Osseo
Pako Corporation
Palmer Printing Company
Park Refuse Service, Inc.
Peterson's Flat Iron, Inc.
Phillips Systems
Plaza Park State Bank
Pleasureland, Inc.
Press Bar and Cafe, Inc.
Professional Crown and Bridge
Purity Dairy Foods, Inc.
Quinlivan and Williams,
Attorneys
Real Estate Sales, Inc.
Realty World East/West
Red Carpet
Ron's Radio and TV
Rubald Beverage Co., Inc.
Scenic Sign Corporation



Wayne Simpson
Athletics



James Flom
Music



John Kelly
Health, Physical
Education and Recreation



Doreen Keable
Learning Resources
and Information Media



Kenneth Raiber
Technology and
Industrial Engineering



John Kilkelly
Political Science

Businesses and Corporations, cont'd

Schabel Beverage Company
SCSU Stores
Sears Roebuck and Company
Security Federal Savings
and Loan
Seven-Up Bottling Company
Side Bar and Cafe, Inc.
Siecor Corporation
St. Cloud Ear Nose Throat Clinic
St. Cloud Fabricare Center
St. Cloud Medical Group
St. Cloud National Bank and
Trust
St. Cloud Newspapers, Inc.
St. Cloud Orthopedic
Associates, Ltd.
St. Cloud Realty, Inc.
St. Cloud Tire and Tread
Company
St. Gabriel's Hospital
St. Regis Paper Company
Roland Stromborg
Sy Ray Plumbing and Heating
T and M Novelty
Don Watkins/Tanner Systems
Team Electronics
Telex Communications, Inc.
Tenvoorde Motor Company
The Bar
Thelen Advertising, Inc.
Tomlyano's Restaurant
Tonka Toys
Traut Wells, Inc.
Twin City Federal Savings and
Loan
Company V.J.B.
Viking Coca-Cola Bottling Co.
Vision Ease Corporation
Voigt's Motorcoach Travel, Inc.
Waldo's Pizza Joynt
Wimmer Opticians
Wolke Miller and Company
X Rite Company
Zapp National Bank
Zylla Television, Inc.

Friends

Olaf M. Aatseth
Scott A. Abbey
Anthony M. and Mildred A. Alfano
Sandra A. Alfano
Craig Altmeyer
Bob Anderson
Don Anderson
Dwain W. Applegate
Rosanna Ash
Ferne Atwood
George C. Bachman
Jacqueline M. Barnes
Bob Beeman
Jean M. Bennek
Donald J. and Patricia Bitzan
Robert C. and Martha J. Bogard
Kent H. and Sandy Bolsta
Suzanne M. Brandl
Cathryn A. Brown
Frank T. Brown
Ruby N. Brull
Margaret T. Brum
Dwight Burlingame
Donna Mae Bzdok
John D. and Bette Jo Carlson
Robert L. and Anita M. Carlson
Tom Carlson
Sandra K. and David L. Carson
Jane E. Champlin
Walter C. Clement
Michael Clevenger
S. R. Bruce Cooke
Dolores L. Corin
Robert J. Cumming
Earl and Lois Cunion
Clem and Chookie Curtis
Esther K. and Leo Determan
Duane N. Dewenter
Michael H. Donohue
D.W. Hutt Consultants, Inc.
Scott Ebersole
Craig and Kristi Elliott
Robert and Vivian Fall Elmgren

SCSU faculty and staff members who served as captains for the 1984 campus campaign are pictured on these pages.

La Wayne Enke
John M. Erickson
Lane G. Erickson
Steven E. Erickson
Paul C. Ernst
Fandel's
J.R. Fischer
Dean and Joanne Fosdick
Senator Mel and Donna
Frederick
Catherine Furnstahl
Stanley L. and Gayle S. Gaffin
Timothy F. Gaffron
Joyce Ann Gelle
Merton Glover
Sharon K. Gonzales
Charles J. Graham
Paul E. and Fern Groethe
Gronseth Directory Service, Inc.
Frank Gruska
B. Ross Guest
Shari L. Gunderson
Vickey Hackbarth
Scott Hary
Gregory D. Hayenga
Tenvoorde Motor Company
Esther B. Heimdahl
Donald Helgeson
Robert T. Hennemeyer
John Herges
Mary Kathryn Hess
Andrew Hilger
John J. and Sandra S. Hillmer
Ralph Hinkemeyer
Clifford W. Hoffman
Douglas A. Holzkamp
Vivienne Horkey
Patricia M. Horton
Mary T. Howard
Kevin J. Hughes
Joan M. Jacobson
Dwight E. Jaeger
Mike Jahn
Byron J. Jensen
Dorothy Jensen
Lester Jensen
Leslie Jobes
Joan John
Alice R. Johnson
Cindy Johnson and Thomas
Moore
David C. Johnson
Samuel K. Johnson
Noel Joyce
Gerald and Karen Jurgens
Joey and Charles Kahn
Mike Kasner
Richard J. Kisch
Christopher H. Kittleson
Lyle Kjesbo
Steve R. Klaers
Jon J. Knopik
Kristine Kohman
John H. Kropp
Cy Kuefler
Jerry La Voi
David R. Lahren
James J. Langer
Burnell L. Larson
Dora O. Larson
John Laurich
Lenarz Realty
Albert and Myrna Lane M.
Lindeman
Louis A. Loes
Gilbert A. and Tharcilla Lommel
Dana Riggs Lowell
Tom H. Luby
Harold V. and Dorothy B.
Madison
Richard Magnus
Shelley Magnuson
Casey Mahon
Elizabeth Maixner
Mark Matthias
E. Richard McGonagle
Richard H. and Nancy L.
McNamer

John W. and Helen G. McReavy
Chris McNamara
Alexander McWilliams
Richard C. and Mary Beth
Megarry
Norma Mehmehl
Carolyn L. Meinhardt
Barbara Melville
James I. Melville
John D. and Mary C. Michaels
Debra J. and Mark J. Mimbach
Math Mimbach
Clair Morrison
Anne L. Mueller
James L. Murphy
Jack E. Nelson
N. B. Nelson
Ann H. Nielsen
Carl F. Nielsen
Orth's First Ward Market
S. Lynne Osteraas
Joseph W. Paddock
Donald Parent
Mary Parson
Linda J. Pechous
Erling Hedahl
Thomas M. Peterson
Lee and Kristine Pfelepsen
Loretta C. Pfelepsen
Samuel and Shirley Pizer
Arne T. and Dolores Pokela
Shari D. Gray Pretzer
Boyd A. and Dixie D. Purdom
Dick and Dorothy Putz
Richard Quinlivan
Robert Rafferty
Jennifer L. Rahe
Verna Louise W. Ramacher
Alan N. Reiter
Phillip and Margaret Renslow
Robert Half of Minnesota, Inc.
Roger A. Rovelstad
Marjorie M. Rowe
Mark K. and Diane M. Sakry
Dorothy T. Samuel
Arthur A. Schaefer
Del W. Schluchter
Teresa A. Schmelzer
William O. and Elnora M. Schmidt
Bill Schroeder
Glenn and Sue R. Schwanberg
Don C. Seaberg
Kenneth L. Shorter
Noel Joyce
Sharon S. Simonson
Martha and William E. Slavin
Gary R. Smith
Stephen D. Sommers
Eva L. Christie Spaeth
Charles Spanier
Harold N. Spanier
John M. Spanier
St. Gabriel's Hospital
St. Paul Winter Carnival Assn.
Eugene H. Storms
Wayne Stutelberg
Joseph Z. Sudow
Viola L. Swingle
Don Watkins/Tanner Systems
Herbert A. Terhaar
D. M. VanNostrand
Jerry W. Vos
Dennis Watkins
William B. and Joan Webb
Jay H. Wein
Clara Weiss
Sally M. Weiss
Howard C. and Joan E. Wilkinson
Thomas J. Winkel
Blair M. Witt
Dennis Woggon
Jerome R. Woit
Wolke Miller and Company
Wayne C. Wolsey
Thomas L. and Judy A. Wyne
Carl J. Ziltz
William Zweiner

Matching Gift Companies

American Can Company
Foundation
Arthur Anderson and Co.
Foundation
Ashland Oil Foundation, Inc.
Avon Products Foundation, Inc.
Bankers Life Company
Burlington Northern, Inc.
Champion International Corp.
Chevron USA
Connecticut General Insurance
Coopers and Lybrand
Cummins Engine Foundation
Dain Bosworth, Inc.
Digital Equipment Corporation
Ernst and Whinney Foundation
Exxon Education Foundation
First Bank of St. Cloud
General Mills Foundation
General Signal
General Signal/DeZURIK
H.B. Fuller Company
Heublein Foundation, Inc.
Honeywell Corporation
Hormel, Inc.
Inter-Regional Financial Group,
Inc.
International Business Machines
Investors Diversified Services
J.C. Penney Company, Inc.
Johnsons Wax Fund, Inc.
Martin Marietta Corporation
Maytag Co. Foundation, Inc.
Medtronic
Minnesota Mining and
Manufacturing Foundation
Minnesota Mutual Life Charitable
Trust II
Northwestern National Life
Insurance Co.
Peat Marwick Mitchell Foundation
Piper Jaffray Hopwood, Inc.
SmithKline Foundation
Sperry Corporation Foundation
St. Paul Companies, Inc.
The Continental Corporation
Foundation
The Hartford Insurance Group
Foundation
Touche Ross and Company
Union Oil Co. of California
Foundation
WCCO AM/FM/TV

NOTE: Donor information applies only to the 1983 calendar year.

Alumni Donors by Year of Graduation

1915-1949

Gladys Parks '15
Evelyn K. Heinrichs '17
Pauline Kiehle '17
Frances Stuffer McKenzie '17
Ida M. Youngberg '17
Kathleen R. Demmon '18
Agnes C. Gaumnitz '18
Lucile M. Bloom '19
Bessie Milne Gardner '19
Marie Martinson '19
Christine M. Adolphson '20
Alice M. English '20
Fern O. Hedenstrom '20
Stella L. Lackey '20
Marian H. Stowe '20
Barbara J. Pedersen '21
Fred W. Pramann '21
Amy P. Wilson '21
John P. Treacy '22
Hazel M. Edes '23
Myrtle L. Lunemann '23
Lucile McCall '23
Ruth F. Rowe '23
Mildred A. Carson '23
Louella N. McGhie '24
Marion Hassman Quinn '24

Christina S. Schnee '24
Maude M. Trumbull '24
Mabel Brown '25
Adelaide S. Delorme '25
Lyla Reck Cottom '26
Eva M. Gustad Hartland '26
Blanche D. Joyce '26
Herbert Lembke '26
Olga Nystrom '26
Katherine Peterson '26
Ruth D. Peterson '26
Marguerite S. Rhodes '26
Ann M. Smith '26
Angeline Beaver '27
Henry L. Bettendorf '27
Francis and C. L. Bjaastad '27
Dorothy Griffith '27
Regina Lehn '27
Francis E. McGuire '27
Robert J. Murray '27
L. Mary Olsen '27
Doris R. Schirmer '27
Elsie F. Storkamp Steenberg '27
Gus B. Westerberg '27
Gladys Zumbrunnen '27
Myrtle M. Arrowsmith '28
Alfreda Crandall '28
Mary H. DeLapp '28
Irene Waugh Fosness '28
Ottillie A. Kaepfel '28
Louis E. Leopold '28
Irja McCarthy '28
Claudette L. Nordell '28
Columbia S. Peterson '28
Arthur A. Anderson '29
Jorgina Anderson '29
Gladys L. Johnson '29
Walter Klausler '29
Lois and Robert Korfhage '29
Margaret F. Dugan Lemasurier '29
Myrtle Stenberg Murray '29
Gordon A. Olson '29
Lenore G. Powelson '29
Ella A. Rindahl '29
Alice K. Rude '29
Marguerite Sweeny '29
Lillie Alinder Bergman '30
Frank B. Butalla '30
Evelyn Engen '30
Florence C. Gerten '30
Esther B. Heimdahl '30
Edna McGown Huss '30
Helen L. Johnson '30
Lila S. Larson '30
Genevieve B. Merry '30
Sylvia L. Morgan '30
Ardis Palm '30
Margeurite Ringeisen '30
Fae N. Schaefer '30
Eleanor M. Whiting '30
Hilred Ahles Shogren '31
Ethelyn E. Brooks '31
Lola Hompe Butler '31
Earl L. Gerard '31
Hazel B. Hansen '31
Eldora M. Hempel '31
Evelyn Hutchison '31
Rose M. Jaeger '31
Ruth Borson Raird '31
Harriet Trolander '31
Catherine J. Bowles '32
Mae Brunkow '32
Ethel C. Burke '32
Dorothy A. Greeley Cotton '32
Adeline and William Harazin '32
Clarence G. Hawksford '32
Lillian P. Johnston '32
Marian J. Kemp '32
Violet and Art Kvarnstrom '32
Donald and Eunice Martin '32
Myrtle K. Mitby '32
Grace O. Moore '32
Alice E. Oliver '32
Ellen M. Pickering '32
Arlene and George Ramseth '32
Florence Siegmund '32
Julia L. Sparrow '32
Gladys P. Walden '32
Margaret B. Anderson '33
Storey Clio Bernick '33
Edward M. Colletti '33
Florence K. Drummond '33
Jeannette J. Dunlop '33
Clara (Spanyers) Holmquist '33
Constance Granroth Johnson '33
Peter and Elizabeth Loso '33
Lois G. Palmer '33
Hildegard Quamme '33
Howard and Mildred Wittmayer '33
Marian Youngberg '33
Harold Eastlund '34
Harold G. Gerritz '34
Louis M. Moos '34
Georgia M. Olson '34
Mary Cashman Ronhovde '34
Bernice Skocpol '34

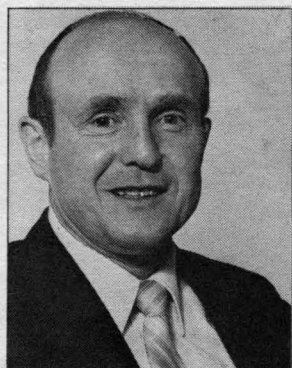
Margaret J. Sogn '34
Ludwig J. Andolsek '35
Mary S. Beckman '35
Ralph B. Holter '35
Leif A. Hougren '35
Timothy J. Murphy '35
Alice Cary Raen '35
Exine Schamber '35
Robert G. Depaul '36
Marcus E. Erickson '36
Joseph Frank Kunze '36
Margaret Lapray '36
Del W. and Jacqueline Leraas '36
Alton B. Madden '36
Emeline M. Quigley '36
Elizabeth Schmoker '36
Charlotte Anderson '37
Paul W. and Ruth J. Bixby '37
Vera H. Bjork '37
Ruth Chase '37
Elsie Kalionen '37
H. Page Nicholson '37
Thomas J. Perpich '37
Gertrude J. Schaubach '37
Sylvia H. Babb '38
William Cochrane '38
Anna M. Fagerlie '38
Mabel E. and Chester H. Heinzel '38
Benedict Sandy Vandell '38
Julius and Dorothy Whiting '38
Arnold Woestehoff '38
Mary Ann Arnett '39
Norman K. Bailey '39
Thorsten R. Carlson '39
William D. Carlson '39
Rosemary Lee Chase '39
Walter J. Gerzin '39
Beatrice B. Heimerl '39
Earl Henning '39
Elsie M. Oksol '39
Virginia L. Pagenkopf '39
Alice C. Ross '39
Mary F. Russell '39
Iris Vanstrom Slettom '39
Lillian S. Teisberg '39
Jule Christopherson Wright '39
Marie A. Bailey '40
Howard O. Buska '40
Joyce Duneer '40
Jeanette Fournet '40
Charlotte C. and H. I. Grove '40
Marvin E. and Joyce Holmgren '40
Alice R. Johnson '40
Virginia A. Liljenberg '40
Tillie Luitjens '40
Catharine Mulder '40
Marjorie Jarvi Ramsey '40
James H. Robb '40
Clara L. Sabrowsky '40
Ellwein Iris G. Sarff '40
Mildred Ahles Shogren '40
Floyd L. and Grace L. Soldin '40
Ken J. Torgerson '40
Ethel L. Wennerblom '40
Madonna H. Erkenbrack '41
Thelma E. Goldsmith '41
Effie B. Ilstrup '41
Kapel Nime Johnson '41
Roy A. Lindberg '41
Arlene Mattson '41
Lila McIntyre '41
Bernadine Burchill Parry '41
Valborg G. Pearson '41
Joseph J. and Fern M. Sayovitz '41
Marie Capser Weissner '41
Orville W. and Jeannie Woestehoff '41
Helen M. Mattson Anderson '42
Janet Bendix '42
Jean Talbot Corcoran '42
Henry J. Emmel '42
Lt Col Martin Govednik '42
Dorothea Ohs Griffiths '42
Ailene Herring '42
Richard J. Jorgensen '42
Hubert P. Kelly '42
Dolores L. Koenig '42
Winfield O. Pehrson '42
Phyllis Torgerson Petersen '42
Rosemary K. Petonic '42
Marguerite Pramann '42
Pearl M. Schenk '42
Doris Erickson Taylor '42
Ellsworth and Ann Woestehoff '42
Jeannie R. and O.W. Woestehoff '42
Dorothy Brown Bard '43
Eileen A. Rudd '43
Doris M. Smith '43
Virginia K. Thayer '43
Alma Ekstrom Waller '43
Ruth Bergien '44
Alice Binger '44
Ruth Luitjens '44
Hildegard Poegel '44
Ardis B. Remquist '44
Lois Jane Nissen Jacobson '45
Josephine L. Sevada '45



Francis Voelker
Mass Communications



Robert Kendall
Speech Communication



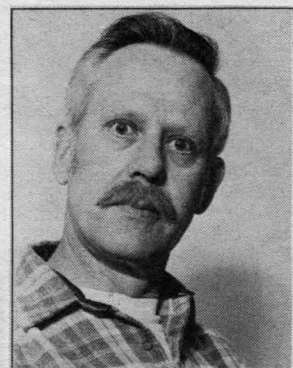
Charles Ernst
Mathematics and
Computer Science



Robert Prout
Criminal Justice Studies



Margaret Rauch
Counseling Center



Richard Ness
Auxiliary Services

Alumni Donors, cont'd

Arnold Julius Dahle '46
Mildred B. Hartleben '46
Maxine Swanson Jensen '46
Jeanne L. Koeppl '46
Dorothy J. McRae '46
Kathlyn Phenow Minogue '46
Marilyn S. Rodgers '46
Ralph E. and Margaret Sauer '46
Betsine Sheggeby '46
James B. Warren '46
Kenneth J. Barrett '47
Donna M. Beck '47
Irvin P. Deneen '47
Maymie Ecker '47
Alice T. Mary Goenner '47
W. Evelyn Haarstick '47
Arnold S. Hojem '47
Daniel E. and Theresa L. Mestnik '47
Gustave E. Osterberg '47
Gladys A. Owen '47
Bernice S. Roe '47
Darleen Cornelius Sather '47
Roland Stromborg '47
Robert Delich '48
Yvonne Gustafson '48
Eleanor J. Johnson '48
June and Thomas Joseph '48
Lydia Clara Kingston '48
Leonard A. Martinetto '48
Curtis G. Olson '48
Pollyann and Thomas Sersen '48
Leon Whiting '48
Ernest M. and Arlene M. Williams '48
James W. Anderson '49
Earl E. Beecher '49
Charles D. and Laurel D. Brainard '49
Alyn N. Dull '49
Richard F. Durand '49
Warren H. and Myrtle M. Fegely '49
Leroy F. Geis '49
Clarence O. Grelson '49
Alfred H. Grewe Jr. '49
Clayton Hartman '49
Louis J. Iacarella '49
Phyllis Ada Hahn Johnson '49
Patrick B. Kidder '49
Doris Z. Lemmage '49
Elaine J. Paul Lanning '49
Gerald P. Schaefer '49
Alden E. Schlagel '49
Charles N. Scholtes '49
Philip E. Stangl '49
Vernon H. Winter '49

1950
Leonard W. Anderson
Robert E. and Valjean Anderson
David C. Campbell
Philip Chapirson
Elizabeth M. Fauver
Marvin D. Fremming
Austen D. Gilyard
Barbara Simmers Green
Ross E. Johnson
Vivian Lightfoot
Anne Mahoney
John Partanen
Al Provo
Joyce L. Scheneker
Peter Schmidt
Ray J. Schonhardt
William S. Shimmin
Leo C. Siegel
Theodore and Margaret Snyder
Donald E. Strommer
Richard Antho Swanberg
Otto Trettel
Andrew Peter Virden
Vivian K. West

1951
Dorothy M. Siegle Blank
Dorothy Brandner
Donald C. Brever
William J. Campbell
Florence Kloskowski Corrigan
John C. Coulter
George O. Erickson
Robert E. Flolid
Avis K. Sandeen Gallagher
Alan A. and Elizabeth A. Gilkinson
Kenneth W. Gilliver
Richard B. Hageman
Bonnie Bernards Hummel
Richard N. Jones
James G. Marmas
Marilyn A. Snicker Miller
Lillie P. Olson
Barbara A. Ostby
H. C. Rustad
Gwendolyn M. Scheerer
Jean M. Sinclair
James F. Stanek
Elmer H. Weissner

Marilyn B. Wilhelm
Elisabeth E. Ebert Williams
George Zabee
Dorothy Zeppin

1952
Dolores E. Anderson
Jean Bonestoo
Edward C. Bonk
Donald Brockman
Wiletha Eckhardt
John F. Falconer
Ann Marie Filicky
William Arthur Jensen
Genevieve Johnson
Gerald Korte
Bernard Miller
Lorraine A. Nomeland
Robert Conrad Nordlie
Julia Quady
Joseph J. Schubert
Cecelia B. Seehusen
Gayle W. Wolff

1953
Neal L. Abraham
Elsie W. Berg
Mary Ann Sackett Bracket
Edward and Muriel Brainard
Thomas R. Braun
Donald Y. Carpenter
Hazel S. Czikkalla
Marie Belle Hallberg
Melvin G. Hoagland
Donald G. and Judith Kadidlo
Betty Ann Mokros Marsberger
Robert P. Meyer
Ardell Pogatchnik Nadesan
R.C. Nelson
Arthur M. Palmer
Marie Peterson
E. Keith Wright

1954
Phoebe Lois Anderson
Lavaughn Bangtson
Patrick Buttweiler

Gerald V. Dahle
Mary Ellen Doucette
Pauline Ekvall
Loreen B. Kolhei Gibson
Betty Hemen
William H. Kemp
Mary Perle King
Charlotte and Norman F. Larsen
Norbert F. Lindskog
Mark C. Linneman
Burton E. Lundberg
Ruby T. Lushbough
Robert Haskell
Leroy P. Poganski
Carolyn Predmore
Alvin M. Sakry
Russell H. and Mary Anne E. Susag
Lucille Mabel Veto
Tharsilla Willenbring

1955
Arlene S. Anderson
Arduis E. and John C. Cleveland
Virgil W. Deering
William E. Dunton
Clarence Fogelstrom
Yvonne Evaline Hjelm
Donald A. Johnson
Yvonne Legrid Mann
Joan Tomaseski Orwoll
Helen M. Pearson
Robert A. Peterson
Robert J. Rader
Lyle D. Schmidt
Janette and Carlton Jr Trimble
Mavis Johnson Vandegrift
Sylvia S. Varner
Ruth K. Cibuzar
Mary Foster
E. Ruth Hager
Jerome J. Hollenhorst
Elaine Salo Kolden
Frank P. Lindell
Donald E. Malmgren
Lloyd E. Olson

Kathleen Papke
Richard L. Parten
Robert K. Sargeant
Joanne L. Soderberg

1957
John and Pat Berling
Claude Thomas Boros
Bruce W. Broderius
Gilman R. and Mary N. Carlson
Joyce A. Donovan
Bernette E. Felt
Virginia L. Fiegel
Donald L. Frampton
John H. and Jennith G. Froyd
John R. Gibbs
Joan A. Growe
Gerald W. Hannula
Richard Haskell
Robert W. Kimball
Robert V. Koshiol
Geraldine M. and Donald W. Maas
Melvin E. Pearson
M. Lucille Peschl
Charles A. Pfannenstien
Rohland R. Reider
Roger D. Schwitalla
John H. Stein
Joyce Wheeler Vanderwyst
James E. Warren
Bernadine G. Zerberonia

1958
Leland E. Davis
William A. and Bernice M. Drier
James D. Fogo
Anna T. Gorham
Lois Anne Havlicek
John and Louise Heidgerken
Elsie C. Johnson
Martin A. Kammermeier
Bonnie Foreman Kamps
Elizabeth A. Livens
Leonard P. Mickelson
Joyce A. Moline
Rolland Leon Nielson
Wallace C. Olson
Richard Perizzo
Frank Joseph Pesek
Jean R. Peterson
Wayne H. and Marjorie Porter

Joan Hemberger Ruhr
Beulah E. Rule
Major Lee W. Tessmer
Carol M. (Maag) Thelen
Laurel Waldahl
Robert G. Waxlax
James J. Wenck
Roger N. Wolff

1959
Rod Anfenson
Faith and Joseph Dobrenski
John R. Elrod
Clarence E. and Evelyn M. Funk
Calvin W. and Alma C. Gower
Edward Hill
Arlis Jean Johnson
Pauline Kirchoff
Mary E. Kollodge
Alice V. Larsen
Willcox Judith Ann Lowe
Sam Marcella
Rita Anna Muggli
Verde Pepin
Anamaria Miller Peterson
Edward J. Pluth
Richard P. Pomeroy
Barbara Rea
Robert T. Reller
Kathleen M. Schieman
Raymond L. Schunk
Eleanor Femrite Sims
Zane H. Stein
Larry Strand
Patrick Michael Todora
Francis and Ludmila Voelker
John P. Weitzel
Dave and Betty Wettstein

1960
Gayle V. Anderson
Arlene Joan Nesheim Aune
Gordon and Daye C. Breckenridge
Ruth E. Burger
Dale C. Carlson
Olga Carlson
Wesley R. Carlson
Dennis John Carpenter
Daisy E. Christianson
Rita Eder Figlenski
Richard P. Gengler
John A. Ingram
Deanna I. and Larry D. Klimstra
Lila J. Koester
Kenneth J. Lacher
Kenneth C. Lamp
Nancy Lien
Julie J. Madonia
Robert E. Marsh
Robert E. Myers
William A. Nelson

John E. Otto
William Radovich
William J. Riggs
Yvonne Delgegausen
Sappenfield
William Selisker
Dennis A. Thompson
Delores H. Waldo
Francis Gerhard Weiman
Dale Zaiser
Kenneth H. Zirbes
Kathryn and Donald Zuhn

1961
Joel M. Ampe
Glenn V. Bartlett
Margaret S. Boatman
Edna Boelter
J. Paul Bolduc
Harlon T. Buisman
Kathleen V. Arney Dykstra
Ronald R. and Dureen A. Gasser
Marvin C. and Alice Hanson
Ruddella Jacobson
John E. Leisen
Millie M. Lembeck
Arden E. Lommen
Barbara M. and David Miller
John J. and Mary Muller
Richard L. Nallick
Diane Frey Newstrom
Fred G. Polesak
Keith Rauch
Paul Reifemberger
William A. Riessen
Dennis M. Ringsmuth
R. Gary Ryti
Gerald M. and Donna L. Sales
Melvin J. Shay
Lawrence P. Sorensen
Shirley Cargill Strotjohann
Richard Walczak
David E. Walsh
William E. Wunderlich

1962
Dean E. Anderson
Marie A. Asner
Richard S. Blair
Robert L. Buck
Maureen D. Carrell
Jerome P. Claessen
Lorraine H. and Lyle Dahl
Glenn Deutz
Roger A. and Mary A. Erskine
Arthur and Barbara Grachek
Martha Hahn
Barbara K. Harris
Duane Henkelman
Edna C. Johnson
Rodney A. Johnson
Ronald P. Kealy
Rose M. Kelly
Jacie C. Kraive
Jerome G. Latkovich
Jean Dombrowski Lundt
Richard A. Magnus
Phyllis Askim Merila
Monica Meyer
Terry Montgomery
Burnell and Janice Olson
Kenneth W. and Linda Raiber
Kenneth M. Reither
Francis J. Rian
Robert A. Ross
Gerald Ryding
Pete Sufka
Grace Larson Swanson
Daryle Allyn Thingvold
Leroy E. and Patricia E. Triebel
Myron S. and Connie Umerski
James Robert Weidner
Roger L. Zellmer
George A. Zunker

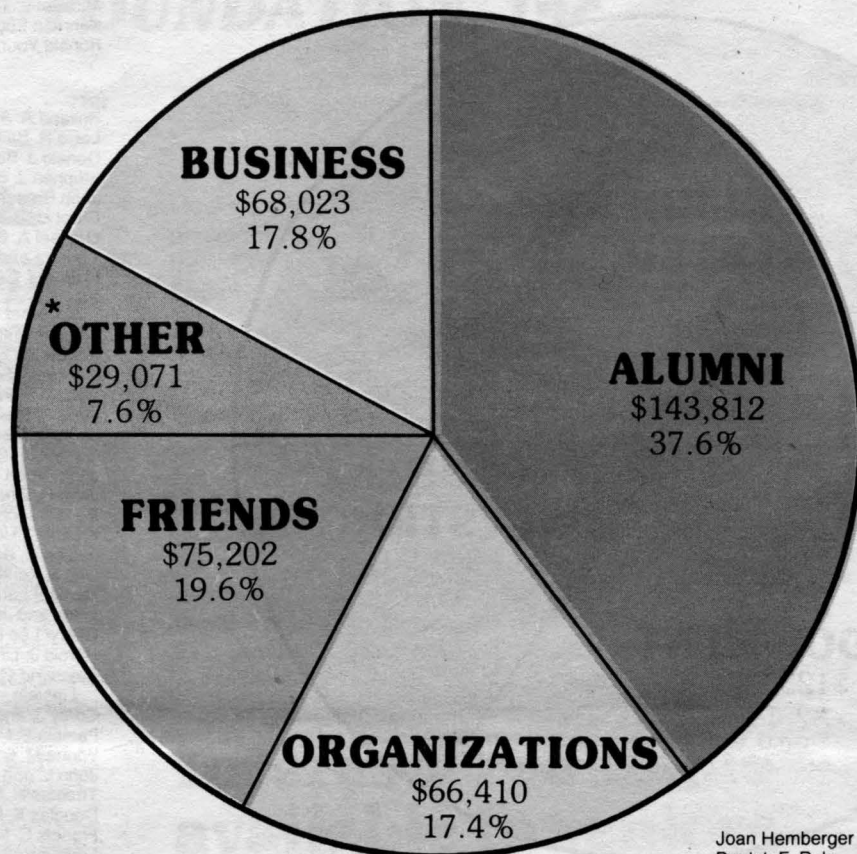
1963
Marcel L. Aleckson
Alan Anderson
Jack F. Anderson
Gene E. and Lynell H. Anfinson
Alvin L. Bauer
Doris Bonkrud
James D. Bonneville
Peggy J. Bronson
Anthony J. Buhl
Patricia Hoban Coxen
Mary Curras
Jessie Harper
Paul J. and Dorothy Heine
James W. Johnson
Burton Katz
John H. Keeler

William J. and Phyllis Lacroix
James W. Mence
Richard J. Mesenburg
Robert J. Metzger
Delroy J. Richter
Marty P. and Patricia Rossini
David G. Rydberg
David and Judith Schaefer
Bruce Schlueter
Tony and Mary Jane Schulzetenberg
Ronald C. Spanier
William Studer
Lawrence C. Sundby
Marvin Gerald Swedal
Chloe A. and Philip A. Taylor
Timothy D. Templeton
Philip C. and Jo Marie Tennison
Arden Torbert
James W. Vonderharr
Paul Wenner
Larry W. Whittle
John F. Zander

1964
E. Joseph Bendzick
Karen Arntzen Bergmann
Joseph H. Beste
John and Melinda Betzold
Maurice L. Buehler
Janice M. and Stephen Burrin
Henry A. Coppock
Victor E. Dorn
Richard and Beverly Dowler
Dennis M. Drake
Conrad L. Dumke
June Elmes
Walter M. Erickson
David James Evans
Anna Barnett Fisher
Madeleine Fleming
Mildred Garside
Gary A. and Janice Gohman
John H. and Ann Hansen
Paul and Patricia Hoffman
Megan Holmberg
R. Kalinowski
Lee Randolph Kane
H. Sue Beglinger Karjala
Theodore and Nancy Kennedy
Roger and Nancy Lohmann
Ann Noller
George H. and Judy A. Paul
Henrietta V. Prather
Ronald D. Richards
Brad Ristamaki
Annabelle M. Ruhland
Thomas P. Savage
Gordon J. Schmidt
Albert Del Shockley
Dennis L. and Sharon Songle
Richard J. Soyka
Thomas R. Stanton
Margie Pearl Stone
Jerome Leroy Swanson
William J. Tembrock
Erwin Bernard Teuber
Ruth M. Thompson
Ann Wright

1965
Gary J. Agren
James L. Altermatt
Richard O. Anderson
Charles J. Basch
Gabriel M. Beckers
Richard T. Benkusky
Gayle Bloom
Bernadine Bracewell
Judith Maurin Brisky
Dale R. Carmichael
Stanley Digerness
Roger W. Dorn
Lloyd Eastlund
Thomas E. and Sonja A. Eveslage
Rev David and Susan Feeder
Virginia Ann Gearhart
Richard Geisen
Pamela A. Gonsalves
James P. Gonsior
Robert Edward Grahek
Duane F. Hackett
Harry and Janice Hoelscher
Donald F. Hyatt
Harlan J. Jensen
James D. Jurek
James L. Karn
Michael E. and Doreen M. Keable
Cheryl Kiklas
Karen L. Kimble
Thomas B. Kinney
Frank W. and Janet Klescewski
Iris Klinefelter
Keith Knutson
Agnes V. Lieser
John G. Lieser

Sources of Gift Income for 1983



TOTAL: \$382,518

*Faculty, Foundations,
Parents, Anonymous



Patricia Nemec
Auxiliary Services

Janet Warnert
Administrative Affairs

Marlene Fischer
Admissions

LeRoy Kasper
Administrative Computer
Services

Brady Watts
Business Office

Regis Betts
College of Industry

Alumni Donors, cont'd

David P. Meaney
William and Barbara Melville
Stephen Lewis Miner
Mary L. Montgomery
David W. Owens
Pat R. Perry
David A. Peterson
Patricia Rice
John and Marilyn Roesler
William H. and Lalonie Ross
Joyce A. Schlough
Judith Ann Schulze
William A. and E. Kay Shaffer
Robert C. Stai
Elizabeth Starry
Carol Steinhagen
William Stenquist
Merle H. Sykora
Thomas L. Theiler
Bo E. Vanman
Jerome A. Wallskog
David G. and Jane T. Weise
Jerome R. and Linda C. Wohlers
Richard F. Young

1966
James M. and Patricia S. Binger
Gloria Maser Bjerke
James R. Boie
Marilyn J. Braaten
Wayne Bridge
Andrew Oscar Carlson
Thomas J. Davis
Patrick Dolan
Jacqueline Julig Donovan
Nina H. and Cornelius Doorneweerd
Harvey L. Dundas
Brian Peter Frank
Thomas L. Gamfield
James R. and Sandra K. George
Steven J. Hanner
Bob Hartzell
Robert J. and Sally Higgins
Pat A. Hillquist
Karen Burkhard Howe
Kenneth A. Netz
David C. Norris
Michael J. Oconnell
Madonna M. Palmer
Dorothy Peck
Gerald D. Peterson
Jerry M. Polk
Wayne Radloff
Robert P. Reed
John S. Rose
David D. Sadler
Norman Seehusen
Richard Shoerl
Gary Gammon Stillwell
Steven B. Szarke
H. Otto and Patricia Veinsreideris
Lois E. Nordwall Ware
James and Carol West
Larry A. Yates
Carol Brevik Zumbrunnen

1967
James M. Anderson
Jeffrey Baird
Bruce T. Baldwin
Carol J. Bangsund
Raymond M. Bauer
Barry and Lana P. Berglund
Michael Brinda
Alice M. Bronkema
Dee Dee Bruyere
Leland K. Carlson
Juanita Clobes
Bruce Colliander
John E. Derus
Paul L. Ebnet
Shannah R. Gillespie
Earl E. and Rebecca A. Glauvitz
Weldon and Barbara Graupmann
David A. Gustafson
Cheryl Ann and Michael Hiemenz
Sandra Hitch
Bruce A. Hitman
Shirley E. and Robert Holbrook
William W. Holes
Douglas Holmgren
Karen K. Ihli
Gerald G. Johnson
James E. Koenig
Michael D. Litfin
Dale M. Monson
James Mortenson
M. Gene Niswander
Jeanne St Germain Parquette
James E. and Alice Perley
James Dennis Perwien

1968
Anthony M. and Mildred A. Alfano
Lynda J. Archer
Lavern R. Basina
Elizabeth and Cyril Baumgartner
Laural Bennefeld
Gerald and Donna Braun
Daniel John Brennan
Dawn M. Otto Brown
Susan J. Carlson
Teresa L. Cota
Michael and Kathleen Dahlmeir
Roger L. Danielson
Margaret A. Freund
Maxine Crea Gamboni
Marjorie A. Gerads
James Griebel
Bruce H. Hagstrom
Erik and Maxine Hallberg
Elizabeth R. Henry
Craig Milford Howard
Robert J. Hromyak
Sharon A. Jackson
Robert J. Johannes
Rae Jean Bonkrud Kara
Marilyn Louise Koerber
Mark G. Kunkel
Helen Gaye Larson
Linda L. Lasure
Mark and Nancy Miller
Bruce A. Mohs
Mary Lou Molkenbur
Jocelyn Muggli
Francis J. Neidermeier
Dennis Lee Nygaard
Judith R. and David J. Park
Judy C. Pearson

Maynard A. Peterson
Mary H. Phillips
Joseph Arthur Rowan
Donna H. and Richard Schaffhausen
Wayne C. Schiff
Gary L. Schmidt
Kathleen and Stephen Schultenover
John M. Schulzetenberg
Roger K. and Nancy A. Scott
Jerome R. Serie
Michael R. Sieben
Charles A. Sjoquist
Donald T. Skoglund
Thomas E. and Joyce Stein
Patricia Colb Straka
Robert C. Wanzog
Stephen G. Wenzel
James and Elena White
William J. Wildman
James and Gloria Wilkinson
Blaine Zeller

1969
Larry W. and Judy Ann Altman
Dennis R. Amundson
James C. and Katherine M. Anderson
Richard Lee Anfinson
Kenneth V. Auld
Ralph H. Austin
Douglas B. Behrens
Darlene C. Klaverkamp Blazek
Linda K. Boser
Beverly D. Bruton
Michael K. Butche
Everett A. Cline
James Croonquist
Thomas F. Ditty
Robert E. Dunn
Lowell A. Erickson
Dennis M. Fabel
Kathryn R. Fortin
Barbara H. Gaida
Dennis Gerald Green
John J. and Viki Gust
Lawrence G. Hartmann
Wayne E. Hoppe
Bruce H. Huebert
Alan Lee Johnson

Donald E. Johnson
Gary Simons Jordan
Le Roy Kasper
Susan S. Park Kim
Harvey and Pat Korte
David P. Kosel
Carolyn K. Lee
Gary R. Lee
Richard D. Lien
Robert Byron Linder
Robert M. Lupient
Ralph O. and Jean S. Morgenweck
Tim Newlin
Kenneth L. and Janice L. Nyberg
Timothy A. Olmscheid
Carl H. Peters
Robert B. Peterson
Gary A. Ranzenberger
William D. Richter
Robert V. Riitters
Michael J. and Barbara J. Roach
Larry C. Schill
Linda Marie Smith
Leon H. Solberg
Judy Ann Steeber
John C. Stelzner
Irene Genevieve Sunt
John Richard Tapp
Truman N. Tauer
Chris Thorvig
Michael A. Wagner
Alice A. Wasko
Jeffrey C. and Gloria Wilcox
Daniel E. Williams

1970
Candice M. Ames
Janice M. Anderson
Jere L. Anderson
Daniel Asmus
Jack D. Bain
Lillian Bergstrom
Donovan D. Betterman
Mary Margaret Brabeck
James F. Brum
Robert G. and Nancy Bullard
Robert J. Carruth
Jean M. Colby
Robert O. Copeland
Ronald A. Crete
Kent Dahlquist
Donald Alan Deach
Brenda Joy (Rothgeber) Degeer
John M. and Peggy Lou Deyak

Glen G. Edberg
Elroy E. Erie
Robert Fischer Jr.
Barbara Garbe
Thomas M. Gearty
David W. and Judy L. Gort
Alan Greig
Ronald B. Gross
James L. Hagen
Richard J. and Lynda J. Halbert
Joseph R. Hanson
Larry L. Hanson
Fred R. Harders
Jacquelyn M. Hartman
Janice Kaye Heck
Sylvia E. Hitchcock
Joan L. Holmes
Joseph F. Jochum
Conrad Arthur Johnson
James E. Juola
Pamela Justus
Richard J. Kappa
Pete and Pat Kinney
Wayne and Diane Kittleson
Ronald J. Kiewer
Timothy J. Knoll
Priscilla L. Krieg
Kathryn Kuitunen
Gary and Betty Lack
Daniel M. Lipinski
Deane A. Lundquist
Jerry N. Miley
Nancy L. Moffatt
Stan Monson
David L. Mortensen
James B. Moscatelli
Thomas J. Mrosia
Richard W. Jr. Nelson
Van Nelson
Ruth Netteberg
Gerald R. Nevland
Henry and Christine Nishimoto
George M. Nold
Robert W. and Jeannie Oneel
Donald L. Ostreich
Ronald R. Paggen
Arthur E. and Patricia Peterson
Lois Redetzke Raymond
Patricia A. and David A. Reinardy
Scott C. and Susan M. Ronnie
Brian E. Rosenberger
Janet L. Ross
Harley C. Schroeder
Colleen C. (Murphy) Sebor
Darlene Seehusen
Mike J. Shannon
Norman D. Sinclair
Michael and Diane Smerdon
Linda Sue Hansen St. John
Edward D. and Jeanette I. Stack

Deanna M. Stinemates
Cheryl M. and Leslie J. Studer
Erwin W. and Dorothy Templin
Kathleen E. Tietz
Michael E. Trewick
Kenneth Eugene Wellman
Ronald Youngdahl

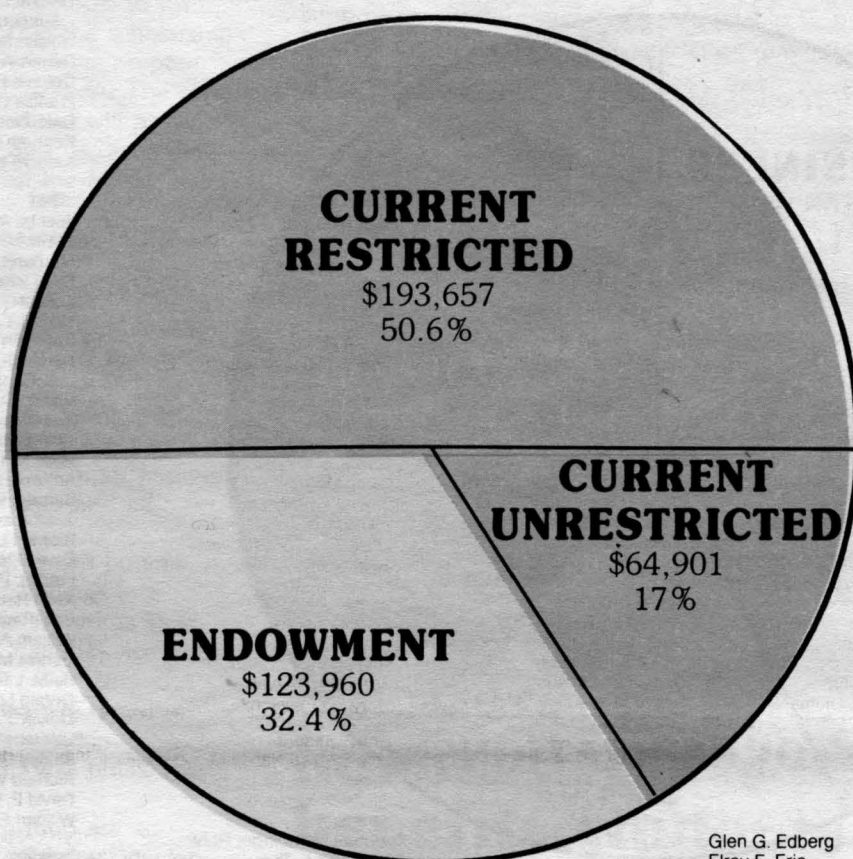
1971
Rolland A. Adkins
Louis R. Ball
Donald J. Bechtold
Stephen J. Beseres
John Broschovsky Jr.
Carol M. Bundgaard
Michael A. Bursaw
Barbara and John Butorac
Robert B. Colby
Patricia A. and Thomas A. Comer
Herman Gerwing David
Robert B. Duncan
Dennis C. Fisher
William R. Flanary
John C. Frank
John M. Frees
Garry Kurt Gamber
John Albert Gau
John H. Grams
Ronald Nicholas Gross
Wendy L. Holman
Janice G. Kastendieck
Dan J. Kerkhoff
Michael Larson
Linda and Jerome Lehtola
Cheryl Lee Lindberg
Harold J. Linn
Raymond G. and Jacqueline Lipstein
Corey J. and Julieanne Loney
Pamela P. Lugo
Vonna M. and Elmer J. Malinen
John L. and Virginia Melton
Thomas N. Mruz
Douglas K. Nelson
Francis C. Nelson
Larry and Barbara Nelson
Warren E. Nelson
Royce N. Nies
Steve A. Olson
Michael J. Price
Gary J. Ramirez
Gary Joe Robinette
Carol Rudy
Alice Ann Rueter
Isidore Schmiesing
Robert L. Sentell
Glen Setterholm
John R. and Christine M. Stoehr
Steven K. Strandemo
Deanna K. Swenson
Richard Theilmann
Robert J. Voigt
Barbara Walter
Thomas D. Webb
Vernon Henry Wehlage
Mary Weise
Michael P. Wertish
James H. Zander
James M. Zechmann
Graig E. Zemke

1972
Bruce Adams
Gary L. and Audry Ashwill
Mary Jo Bartos
Joan Mary Benusa
Bernice Strootman Berghuis
Sheila K. and Alan F. Boesche
Gary Wayne Botzek
Frank J. Brenny
Gayle Glatzmaier Brown
Dean A. Budde
James E. Carlson
Jeanne A. Carney
Leroy and Janice Chief
Alice A. Christen
Richard Cornelius III
Cheryl Baird Davidson
Theodore and Kathleen Doe
Peggy Lynn Eckstrom
Lyle Evers
Diane Louise Fahl
Thomas D. Fischbach
Susanne Kathryn Gagner
Herbert and Florence Goodrich
John Pierre Gouin
Glen R. Gray
Kathleen G. Hallgren
Dennis C. Hayden
John E. Herges
Thomas R. and Jane Hoffman
John Hurd
Colleen P. Jakovich
Duane G. Johnson

Ruth M. Johnson
Steven G. Johnson
Gaylen L. Kaehler
Frederick and Susan Novak Kaiser
Stephen C. Kettells
Randal D. Kolb
Kathie Korman
Robert Wayne Kormann
Lucy L. Larson
Mary Margaret McKell
John R. Melville
Major Thomas A. Mikkelsen
Anita M. Miller
George E. and Marjorie C. Mokler
Mark J. Moxness
Gary M. Nelson
Randy W. Pearson
Michael L. Phillippi
T. Jeffrey Prowda
Leo J. Rassier
Stephen Carl Reiter
Nancy Du Bois Sack
David A. Schwinghammer
Carol J. Seaman
Donna M. Shequen
Patricia G. Speiss
Thomas A. Stapel
Kathleen A. Sandquist Stauber
Nancy G. Steinleitner
Rebecca A. Strupeck
Carol A. Tembreull
Paul M. Thelen
Frederick J. and Judith M. Thomas
Mike F. Thompson
Richard G. Tomczik
Leroy V. Walberg
Ann Frances Ward
Carol C. and Paul Wellen
Patricia Ann Wildt
George Matthew Wilson

1973
Don T. Aamodt
Susan Marie Ahlstrom
Donald F. Alm
Allan R. and Mary Andreotti
Harold R. Bares
Robert O. Beseth
Mabel Bowen
David Allan Boyce
Lee Paul Carlson
David Christiansen
Virginia D. Clark
Richard E. Conway
Kathryn Friedrich Davis
Mike Deangelo
Gary Deaustin
Patrick J. Degrace
Kenneth B. Ebensteiner
Bruce W. and Kathleen A. Ellis
Juliana E. England
Mabel Erion
Jo Anne Erler
Michael S. Flaherty
Juanita Marie Frerich
Donald A. Ganzer
Joyce A. Gedde
Gerald C. Gerads
Earl E. and Rebecca A. Glauvitz
Keith E. and Gay N. Glebe
Walter J. and Maureen L. Grant
David W. Greve
Paul E. Gutknecht
Bonnie J. Hagelberger
Susan Haggberg
Randy L. Hall
Edward Hartman
Patrick W. Henning
Mary T. Hiemenz
Patricia A. Hirl
Charles T. Holmstrom
Peter and Sally Holtz
Richard R. and Sandra Honza
James P. Jacobsen
Thomas A. Jakel
Catherine R. Johnson
Clifford G. Johnson
Spencer Brian Johnson
Larry R. Jorgensen
Matt Vincent Kahnke
James D. and Arlene Kelly
Stephen A. and Delores A. Konz
William John Lauder
Barbara A. Lauer
John M. and Nancy Owen Lavander
Mary A. Leoni
Gary Allen Libby
Everett and Sandra Marble

1983 Type of Gift Income



Total: \$382,518

Alumni Donors, cont'd

William J. and Jane Matter
Kathy A. McCorvie
Richard G. and Ann A. McCullum
Ronald Menzel
Ruth K. Meyer
David Bacon Minier
Paul Vincent Morneau
Patricia Murphy
Joyce Comer Olson
James D. and Mary J. Paxton
Scott D. Peters
Jan Scott Peterson
Carleen Rhodes
Gordon D. Robertson
Michael J. Roddy
Lowell L. Rushmeyer
Lanny R. and Karen R. Saumer
Bros Leann Schmidt
Rodney C. and Ann M.
Shinabarger
Donald Lee Skotterud
James L. Sultan
Bradley J. Tenkley
William J. Trwick
Gary C. Tufte
Nora Lee Varner
J. Gilberto Vasconez
Marvin Paul West
Judith Ann Zaczkowski

1974

Peggy Lee Anderson
Mary Ann Backowski
Mary Elizabeth Bakeberg
Matthew S. Bauer
Gardell and Christine Bearl
Cletus E. Beckel
Daryl V. and Patricia A. Bell
Christine Bettendorf
Greg Bigalke
Susan M. Binnie Marchetti
Barbara A. Bowen
James Francis Boyd
Diane I. Lubben Bugbee
Paul E. and Kathleen Cahill
Harold Penn Carter
Richard Chalstrom
Janis M. Cimperman
Susan V. and Paul Clabo
Susan Carol Clair
Steven Merle Colebeck
Joseph F. Cronin
Cheryl Larson Croonquist
John C. Dorio
Charles M. Dreheim
Nancy A. Duberstein
Denise Dawn De Long Elert
James Flom
Lawrence Edward Franklin
Thomas A. Gustafson
Stuart A. Hamilton
Susan G. Hara
Robert Anthony Hennek
Kenneth J. Hermanson
Dennis J. Holland
Dale Robert Hovind
Dennis D. Johnson
Michael G. Johnson
Debra M. Judd
William J. and Eva L. Karlson
Christine Kenyon
Kenneth L. Knutson
Inez Kronenberg
June Larose
Jeffrey H. Larson
Michael Leonard Lieser
David Linder
Ron Lloyd
Richard Lord
Raymond B. Mailhot
Charles P. Markham
Brian J. McMahon
Carolyn L. Meinhardt
Mark William Miller
Phillip J. Miller
Warren B. Misiewicz
Gregory Allan Morrison
Ron and Mary K. Morton
John P. Munkberg
Bruce C. Patton
James S. Rajala
Richard D. Rasmussen
John Hill Reynolds
Neal C. and Susan G. Rucks
Margaret J. Marsh Sager
Warren S. Satterlee
Nancy E. Kipp and James M.
Schagh
Janet Venneberg Schmidt
David C. Schmitz
Bonita L. Schultz
James R. Schwab
Charles W. Seefeldt
Elaine Selinger
Darrel R. Severson
Joanne M. Sher
Cathryn E. Smith
Abilene A. and Cloyd Starbuck
Darrell E. Sticha
Raymond R. and Karen E. Stimart
Rouert J. Svare
Hazel R. Szafranski
David K. and Teresa Thome
Mary Torpy
Phyllis J. and David J. Werness
Geraldine Wing
Jeffrey D. and Kathleen Wright

1975

Alfred M. Anderson
Kenneth Allen Bailey
Sandra S. Behrendt
Joseph A. Beuning
William D. Bridgland
Rojanne Gayle Brown
Patrick Jerome Buhl
William Lee Caruson

William J. Colegrove
Ernest C. Coleman
Curtis William Cornell
John R. Crary
Larry J. and Kathleen A. Demars
Marguerite B. Diederich
Herbert H. Dingmann
Clifford E. Fenske
Mark T. Gadbois
Joseph and Marcia Gans
Robert P. Glumack
Sarah E. (Lindahl) Gold
Douglas Gustafson
Peggy A. Harlan Halsey
Reid Q. Hans
James B. Hogenson
Jeffrey N. Holmberg
Linda Sweet Johnson
Robert C. and Elaine Johnson
Patricia Keller Baird
Auralia Rose Klimmek
Eddie A. Klun
David W. and Carolyn S. Kranz
James M. Levno
Richard A. Mattero
Stephanie Oliver McNamara
Rodney A. Melgard
David F. Meyer
Darrell L. Miller
Janice Miller
Robert Montesano
Deborah Moore
Matthew J. Murphy
Gary M. Nelson
Laura A. Nelson
Stuart H. Ness
Robert Nicholas Oganovic
Dennis M. and Jeanne Olson
Roger D. Olson
Linda Dlugosch and Joseph
Opatz
William J. Peshek
Timothy J. Peterson
James Richard Petrich
Joseph D. Rajkowski
James W. Rausch
Sherwood Reid
Dana L. Richter
Gary K. Roberts
Duane P. Rutz
Suzanne Lorane Saggau
Karen L. Oglesby Schwanke
John W. Screeden
Ann E. Knutson Seeberger
David C. Seep
Cynthia I. and Richard A. Seifert
Kent M. Small
Barbara Neilson and Steven
Smith
Dale J. Smith
Paul Smith
Michael L. Sockness
William J. Somrock
John M. Spanier
Steve P. Spielman
Clyde M. and Marlene M. Stangl
Jenny Strzok
Monica Laudenbach Swisher
Steven J. and Monica L. Swisher
Philip Terry
Gary L. Thompson
N. John Vandepas
Charles Michel Villeneuve
John Herbert Wadhams
Cathy J. Wentworth
Mary Jo Wieber
Donald Lambert Worms
Lawrence and Denna Zins

1976

Paul D. Agranoff
Larry John Aust
Paul Backstrom
Peggy Ann Bernard
Kristine M. Besel
Curtis Black
Michael J. Boyd
Maureen Koury Brinkman
Katherine P. Brown
Louis A. and Jeannette
Brunckhorst
Craig W. Carlson
Paul J. Colbert
Daniel Cote
Orvis Gerald Dahlen
Gayle M. Devroy
Stephen M. Dickhaus
Bruce A. Diercks
L. Paul Dinndorf
Janet Salk Donohue
Daisyanne M. Elmquist
Scott L. Elton
Erik Englebreton
Tod and Alison Ewing
Richard P. and Carol J. Fields
Bruce A. Finger
Lee J. and Carolyn A. Gutteter
Delaine J. Halberg
Cindy L. Hanson
Gene L. Hanson
Joseph F. and Yvonne Hanzlik
Mike and Jane L. Lussenhop
Hayman
Eric F. Hepola
Sandra K. Kling Hite
Patricia Holthaus
David George Johnson II
Charles Robert Kaney
Diana Kasper
Robert D. and Lu Bell G. Kendall
Kevin J. Kopischke
Laura Lee Swette Laister
Alan J. Laursen
Steven W. Lebeck
Glenn R. Lund
Randi Larson Magsam
Helen and Eugene H. Marthaler

Deborah Helen Ricke Mason
Frederick May
William F. and Patricia
McPherson
Beverly K. Melnychenko
Susan L. Melrose
Joyce K. Moran
Clifford R. Mullen
Mark J. Murphy
Shirley Macklin Murphy
Catherine Bastien Murray
Mark A. and Kathleen Mustful
Roger K. Nibbe
Mark R. and Lois H. Nordling
Bruce D. Oimoon
Gail Ostler



Thanks, investors!
Your generous gifts help SCSU
maintain its margin of excellence.

David H. Pany
Mary Kathryn Perroni
Virgil Plath
Kenneth and Mansueta
Pollworth
Allan W. and Joyce E. Rife
Francis J. Roehl
Thomas J. Rosenthal
Shannon M. Saatzer
Arvind M. Salvekar
Shirley M. Schmatz
Kenneth Schmitz
Henry S. Schreifels
Daniel Joseph Schultz
Mary Jo and Larry A. Schulz
David W. Senst
James and Connie Shella
Larice K. Sing
Daniel Sis
Cynthia Peterson Solnar
Mary V. Soucek
Michael M. Spanier
Murray K. Srock
Lois C. and Thomas J. Steichen
Vernon E. Stevens
Steven Jeffrey Thomas
Elaine M. and Stephen V. Thrune
Denny Tufte
Barry R. and Phyllis E.
Van Buren
John F. Wegner
Gary Milton Weihrauch
Kenneth A. Wood
Mary Yoos

1977

Judith Fay Anderson
Charles A. Bakeberg
Bradley S. Bardon
Allen G. Barron
W. Lynn Bastian
Steven A. Becker
Kathy A. Berg
Gary A. Bergeson
Allen and Nancy Berning
Robert H. Bishop
Dick and Mimi Bitzan
Susan Kay Degraw Blakeslee
Trish Boeke
Ross A. and Lynn M. Boerhave
Rosanne E. Brown
Nancy Jo C. and Thomas Byrne
Charles E. Campbell
Douglas G. Campbell
David Allen Carlson
Leroy J. Christensen
James T. Clark
Steve A. and Susan K. Deal
Gerald M. Derr
Timothy P. Doherty
Lillian London Dubow
Christina Ann Errebo
Roger H. Falde
Russell D. and Jennifer E. Fondie
Michael J. Genovese
Curtis Ghilyn
Patrick L. Giambruno
John D. Gillard
Dianne Glowatzke
Steven M. Gray
Thomas W. Greenhoe Jr.
Eugenia M. Guider
Milton L. Gustis
Stephen J. Hanzlik
Nancy A. Hartland
James K. Heilig
Jeffrey Todd Heyen
James Leroy Hillman
Michael S. Hogan
John A. Hovanetz
Amy R. Jasmer Flanders
Catherine A. Jenniges
Cheryl Ann Kepke
Mary Kay Kern
Bradley R. Krogman
Susan Velishek Langer
Harold and Mary B. Lieberman
Gregory A. Lobeck
Mary K. Loberg
John S. Meier
Emma Jean Melin
Cheryl J. Namyst
Steven B. and Georgia Nauman

David W. Nielsen
Kathrine Ova Toft Nielson
Roger V. Nye
Jay A. Odegard
Gary Leroy Peterson
Mark R. Peterson
Terrance M. Peterson
John R. Prichard
Bruce Gregory Robinson
Jane P. Sanchez
Larry L. Schafer
Mark Scharenbroich
June M. and Dan Schroepter
Craig A. Schulstad
Bradley Allan Seim
Thomas Clyde Siegel

Dorothy Simpson
William A. Sommers
Sheryl A. Sostarich
Kathryn A. Stolpman
Irvin D. Swanson
Douglas L. Swenson
James E. Tarara
Richard D. Verlo
Eloise M. and Jerry Westby
Lenea M. Wheeler
Curtis P. Windmuller

1978

Susan H. Goenner Adams
Joellen Ann Langue Amundson
Diane Marie Barbar
Gary R. Bauchan
Joanna Kay Billiard
Douglas C. Boeckmann
David L. and Jeannine R. Boyer
Susan Brandner
Jaime Elizabeth Bryce
Debra Alm Bunney
Myron B. Bursheim
Donald C. Carlson
Ralph W. and Linda M. Carr
Diane Clarke Carter
Michael J. Casserly
Gayle A. Claypatch
Nancy Jean Ivers Clunis
John Arthur Dixon
Scott J. Dreier
Greg R. Dvorsak
Erin Ann Eiff
Barbara Jean Elseth
Lucille I. Fillenworth
Shirley M. Finnegan
Mary E. Gilbertson
John Graves
Gayle J. Grimm
Ann Guthmiller
James J. and Debra J. Hartman
Allen A. and Dolores M. Heinen
Lila Mae Saxton Heins
Steven H. Helker
Donald H. Hesse
Kristine L. Houser
Anita Jean Hovald
Bruce Andrew Johnson
Charles A. Jonaitis
E. Farniok Englebreton Kathryn
Bruce A. Kerfeld
Jean Marie Kincaon
Earline R. King
Tuff Edward and Rosanne La
Cecelia Marie Melberg Ladue
Margaret and Curtis Lane
Therese C. Salaski Laudenbach
Curtis L. Levang
Laura Beth Lippold
Renae M. (Velzke) and Richard
Lund
Debbie L. Ripley Mantz
Lynne and Wayne Mattsfield
John D. McCarthy
Michael J. McCullough
Conrad J. Meier
John Nagel
William and Eleanor H. Nickles
Stephanie Duvall Noble
Leslie T. Nyberg
Marian Oftedahl
Tom Ogdahl
Joy Lynn Peters
Dien Dai Phan
Janine Vera Premil
Mark J. and Louise A. Rieland
David W. Ritzman
Robert F. Rosenbaum
Mark R. Rossi
David J. Roufs
Teresa Russell
Kurt R. Schulzetzenberg
Michael A. and Joan M.
Schumacher
Steven G. Siddy
Robert Smith
Leslie D. Johnson Soetebier
Virginia Sorensen
Stephanie Borden Spratt
Timothy J. Stier
Judith Strand
Thomas J. Stuewe

Joyce and Kiyoshi Suzuki
Craig and Constance J. Swanson
Charlene Thul
Garland L. and Deb Tucker
Dale A. Wahlstrom
Robert Dolan Walker
Janice L. Weber
Michael Scott Weber
Robert J. and Susan R. Welna
Paula J. Welte
Daniel Craig Whipple
Lynn and Brian Wicklund
Dean I. Wiese
Michael John Willenbring
Brian Williams
Jebb D. Willis

David John Windschill

1979

Daniel P. Bailey
Donna R. Bersch
Peter Del and Connie R Biaggio
Eugene C. and Mary M. Bjorklun
Joseph Daniel Boehme
Patricia Bohanon
Patrick J. Boran
Claude F. Bradford
Renee Tunheim Brand
Terrence Andrew Brandt
Gwen M. Broich
Dianne I. Broughten
David C. Burbank
Louis Thomas Caldwell
John D. and Bette Jo Carlson
Kris D. Carlton
Barrett J. Conor
Anita Corrigan
William Dalman
Linda Schultz Dean
Wilford R. Deweese
Mary P. Ditlevson
Michael Downey
Linus Dumont
Leroy P. and Nancy M. Eastman
Heather Loughman Echert
Gayle M. Englund
Janese Marie Evans
Andrew Faith
Mark Allen Finger
John L. Fjellanger
Cynthia Friis
Jayne Steverding Glibota
Betty J. and Mark S. Gottsacker
Frank Harrington
Rima Karam Haugen
J. Stevenson and Beverly
Haverstock
Clifford James Hay
Bonnie Hein
Joyce Ann Holt
Bryan W. and Nancy Huber
Jeffrey M. Huenecke
Janis Johansen
Gregory C. Johnson
Kevin D. Johnson
Patrick J. Junker
Arnold P. Kalla
William J. Kerzie
John S. Kes
Pamela Kay Knudson
T. LeHieu
Ann Lee
Reid S. Lerum
David Levine
Kevin M. Lewis
Kenneth V. Lundquist
William R. and Charry K.
Marczewski
Robert Margo
Thomas S. McDeid
Laurel Rae Merrick
Vickie L. Wiesner Mersy
Mark J. Meyer
Betty J. Mrkonich
Danny K. Noethe
Kenneth Noyes
Kristen A. Brewers Nuytten
Dennis J. O'Brien
Gregory Robert O'Brien
Mark J. Oehrlein
Paul R. and Diane D. Opatz
Cindy A. Opitz
Thomas W. O'Reilly
David E. Patton
Lance K. Peterson
Patrick O. Reedy
Greg Regnier
Frank J. Reiter
Deborah Lou Roepke
Julie A. Schilling
Annette Schneider
David S. Schroeder
Ingeborg Dahl Sorensen
Patricia Cherrey Sparks
Robert C. Spilane
Thomas R. Stephen Jr.
Lee Ann Sticha
Anne E. Stoll

Wendy Duchene Susen
Sally Jean Swing
Ronald J. Tallman
William L. and Terry Tschida
James E. Vaith
Kent D. Van De Veer
Gregory S. Vetrus
Martin A. Voss
Paul L. Vranish
Alan D. Wadleigh
Janet Warnert
Michelle Stang Watkins
John T. Weidner
William B. Windsor
Connie R. Yotter
Loren Zemple
Pamela R. and Michael D.
Zimmer
Douglas John Zwach

1980

Gregory A. Ahrendt
R. Mark Alexander
Dorelyn F. Anderson
Daniel J. Beran
Alice Binsfeld
Patricia Jean Birkeland
Lynn M. Brabec
Susan Carlson
Patricia A. Keffe Christensen
Tamara Cirhan
Mark A. Commerford
Molly F. Condon
James C. Dahl
James F. Drahos
Tracy Ann Garbe
Andrew B. George
Terry Dean Gorham
Jody K. Grambo
Robert W. Greeley
Mary G. Hartman
Nancy Jill Henderson
Randy G. Herman
Jill R. Hohlen
Curtis L. Horkey
Andrew G. Jirik
Galen J. Johnson
Michael N. Johnson
Andrew P. Jude
Louise Mielke Hagen Kay
Barry A. Kazemi
John L. Kidd
Gregory F. Kirchhoff
James R. Kline
Robert E. Koll
Gregory Donald Kubal
Kathryn Kuechle
Esther L. Kumma
Terry Lee Lennon
Janice M. Lennox
Debra Ann Lenz
Bruce E. Lervoog
Douglas D. Lien
Randy and Brenda Markman
Glenn R. and Patricia K. Mayer
Teresa Ann McGill
Steven M. Mekoli
James I. Melville
Michael Gerald Meyer
Donna J. Miskowic
Mary Beth Molenaar
Beverly E. Nestingen
John Joseph Niehaus
Gary Joseph Nierengarten
Marie A. Norman
Thomas G. Norman
Jon Okerstrom
Robin Olson
Bradley Julius Ost
Alan L. Overbey
Suzanne M. Palm
Greg Dennis Paulson
Sandy Shen Ping Peng
Norbert J. Philipsek
Diane Irene Schloemer Polum
Steven and Mary Rains Weber
Susan Mae Rehn
Barbara Reinert
Dale M. Schulte
John Herbert Selvog
Christopher P. Shorba
Jay Allen Snyder
Russell D. and June Spychala
Diane M. Stinson
Tim Swette
Paula A. Tapala
Craig S. Telshaw
Douglas M. Tharp
Mary Lynn Tryhus
Yvonne L. Vie
Lois L. Vollmer
Gregory Alan Waletzko
Brian John Warnert
Teresa F. Wilder
Kelly E. and Tracy J. Woods

1981

Bob M. Andersen
Karen T. Andersen
Kelly and James Arnold
Neil L. Barten
Thomas M. Cherrey
Stephen A. Condon
Craig J. Cool
Charles A. Coughlin
Mary Rosalie Seidel Cox
Mark T. Dickey
Scott K. Dooner
Mary J. Edman
Mark G. Eisenschenk
Cheryl M. Froland
Lisa Peterson Fuller
Thomas Gavaras
Dorace J. Goodwin
Geraldine Graber
Sheryl Lynnette Hannem
Linda S. and Kurt Hanson
Mark J. Hemerick

Jeffrey Scott Henn
Carole J. Hoffman
Brenda K. Holmgren
Annette M. Jackson
Thomas A. Janochoski
Adam M. Jaskowiak
Theresa A. Kendle Sievers
Craig A. Kephart
Matthew Kottke
Paul Alan Kovach
Corrine K. Kroehler
Daniel J. Larkin
Jerilyn J. Lasley
Patricia C. Lutterman
Jeffrey Carl Matheson
David L. Maurer
Peter McLane
Deborah C. McKay
Jeanne E. McLellan
Thomas Richard Miller
Dale David Mills
Michael J. Monahan
Mikel G. Morgan
Patricia D. Nelson
David A. and Pamela A. Ocel
Alyce M. Peterson
Dean W. Peterson
Patricia A. Peterson
Christine M. Walberg Petzoldt
Ronald W. Petzoldt
Marcella A. Hawkinson
Rasmussen
Rand Z. Rasmussen
James A. Rhoades
Steven C. Riehl
Steve J. Rodge
Jo Ellen Rudnitski
Catherine A. Sable
Diane S. Schellinger
Patricia S. Schmitt
Camille Susan Schoetz
Jeff Wayne Siewert
Carol M. and James H. Smith
Fred Sobota
Kevin Spates
John R. Stefanich
Robert A. and Jill M. Terry
Jennifer M. Timmers
Ann E. Todd
David C. Toohey
Mark David Torgerson
Mary P. Trogen
Susan A. Wahl
Debra Ann Warrick
Susan Christine Waterman

1982

Robyn Jean Ahlgren
Christine E. Amundson
Anna Marie Anderson
Debra M. Anderson
Thomas J. Anfonson
William A. Bell
Carol Blade
Cynthia Brueck
Brian D. Buxton
Jean M. Dokken
Larry Lee Engel
Jeffrey S. Fisher
Gregory Mark Frandsen
Steven D. Fritze
Charles S. Gahm
Brenda S. Granquist
Roxanne M. Grow
Thomas H. Gruska
John A. Haas
Scott R. Hamann
Lori L. Harstad
Kathleen A. Hill
Timothy E. Hill
Barbara Holzkamp
Linette Huus
Yamoonee Jairam
Kelli Jakobitz
Nancy Ann Jakubic
Cynthia M. Johnston
Barbara B. Jolicoeur
Janet M. Kilian
Kimberly A. Korman
John S. Kuehl
Richard and Virginia K. Lane
Robert N. and Nancy N. Leach
Doris A. Matter
David J. McKane
Laura J. Mischke
Masako and Yutaka Morohoshi
Beth R. Newberg
Scott J. Olson
John R. Osterberg
Susan P. Palmer
Robert J. Peterson
Linda N. and Timothy T. Reiner
Scott Roeder
Brad Rud
Susan C. Ruf
Warren C. and Peggy L. Rumsch
Keith C. Schoenecker
De Anne Schroeder
Ronald Jerome Schroepter
Lynne A. Sheehan
Thomas J. Shmitt
Sharon Z. Smith
Ruth I. Stahlmann
Sharon A. Stephani
Duane Thiele
Pam Thomsen
Patrick and Christina J. Tobin
Keith L. Valentine
Ronald P. Walter
Suzette Louise Wells
Pamela Jo Wentzel
Kirk Zimmer

1983

Blaine L. Anderson
Douglas Charles Barclay
Stephen James Norlin

Gifts for the gifted. SCSU's Center for Information Media will sponsor a professional development program called "Books, Media and the Gifted Child" July 11-12 in Atwood Center. To be conducted by Nancy Polette, the workshop is designed for library and media personnel, teachers and curriculum directors of programs for the gifted. Polette is director of the Laboratory School for Gifted Children at Lindenwood College in Missouri and author of *Three R's for the Gifted*, *Exploring Books with Gifted Children* and *Picture Books for Gifted Programs*. Workshop fees range from \$35 to \$70. Registration deadline is July 3. For information, contact the Office of Continuing Studies, (612) 255-3081.

Digging into history. Research will be conducted at two central Minnesota archaeological sites during a June 11-Aug. 16 field school sponsored by SCSU and the Hatcher Museum of Anthropology. Excavating is scheduled at the Wenner Site near Cold Spring, where there are indications of human habitation dating back more than 1,000 years, and a newly-discovered site in Sherburne County which appears to be a bison kill area over 6,000 years old. A continuation of the Headwaters Archaeological Research Program, the school is open to all interested persons and offers up to 16 academic credits. For information, contact field school director Richard Lane, SCSU assistant professor of anthropology, phone (612) 255-2294.



Joanne Benson is the new associate director of Alumni Services at SCSU, a role that keeps her busy providing programs and services for the university's 33,000 graduates of record. She also serves as executive director of the Alumni Association, coordinates Homecoming and other alumni events, and assists the Development Office in alumni fund-

raising. Benson taught in SCSU's Campus Laboratory School from 1973 to 1983, attaining the rank of assistant professor. She holds a bachelor's degree in elementary education from SCSU (class of 1970) and is enrolled in a master's degree program in educational administration. She is a member of Kappa Delta Pi honor society.

ALUMNI calendar

JULY 1-15

Switzerland/Bavaria Alumni Tour. One option includes the 350th anniversary presentation of the Oberammergau Passion Play. For information, call (toll-free) 1-800-262-0123.

SEPTEMBER 15

David Renslow Memorial Golf Invitational Tournament. Wapicada Golf Course, starting at 8:30 a.m. Precedes 2 p.m. football game, SCSU vs. University of Minnesota-Morris, Selke Field.

SEPTEMBER 29

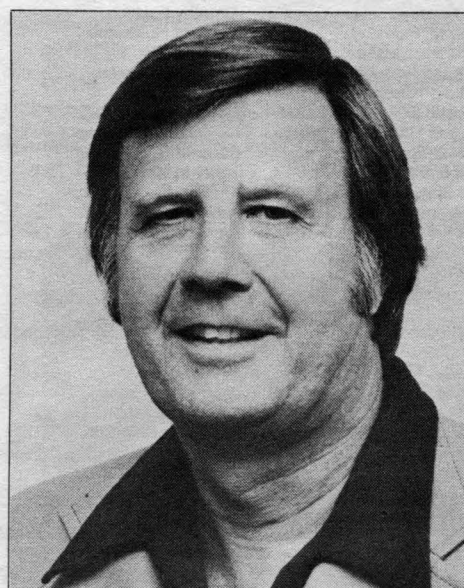
Third Annual Athletic Hall of Fame Recognition. Induction ceremony. Football, SCSU vs. South Dakota State University, 1:30 p.m., Selke Field.

OCTOBER 18

SCSU Booth and Exhibit, Minnesota Education Association Convention, Minneapolis Auditorium.

OCTOBER 19-20

Homecoming 1984. Alumni awards presentation. Alumni/faculty dance. Class reunions, 1958-59-60 (tentative). Football, SCSU vs. Morning-side College, 1:30 p.m., Selke Field.



Noel Olson, director of men's athletics at SCSU, has been appointed commissioner of the North Central Intercollegiate Athletic Conference, effective July 1. He succeeds R.D. "Dewey" Halford, who is retiring. The ten member institutions in the conference compete in 10 men's and seven women's sports programs. Olson came to SCSU in 1969 as head men's basketball coach after coaching men's basketball for five years at the University of Minnesota-Morris. In 1976 he was named men's athletic director and in 1981 he resigned as men's basketball coach.

Alumni Association, St. Cloud State University OUTSTANDING YOUNG ALUMNI AWARD

This annual award recognizes young graduates (since 1969) who have distinguished themselves in their work or in their communities. Professional achievement, volunteer service and contributions to SCSU are considered in choosing recipients.

Name of Nominee _____

Address _____

City _____ State _____ ZIP _____

Nominated by: _____

Address _____

City _____ State _____ ZIP _____

Nominations are accepted at any time. Supporting information is helpful. Mail to: Alumni Awards Committee, Alumni House, St. Cloud State University, St. Cloud, MN 56301.

We remember . . .

The deaths of 31 SCSU alumni have been reported. The year listed is the graduation year.

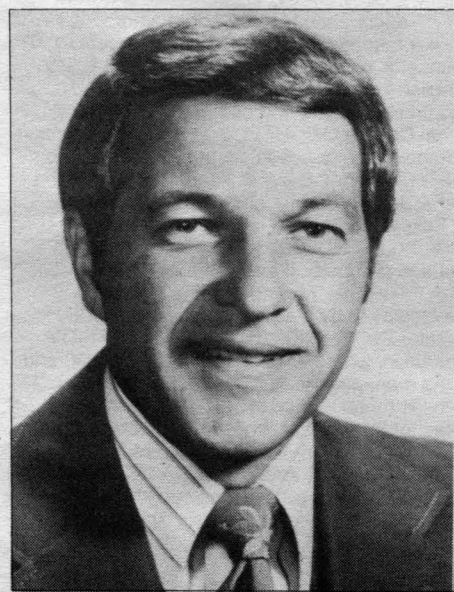
- | | |
|------|---------------------------------------|
| 1912 | Helen Wheaton Houlton, Elk River |
| 1912 | Mildred Nordell, Clearwater |
| 1913 | Esther G. Labrum, Houston, TX |
| 1918 | Mildred S. Chambers, Sauk Rapids |
| 1920 | Robert Herbert Larson, Columbus, OH |
| 1920 | Helen Frost Grinois |
| 1920 | Mary Drought Markwardt, Ironton |
| 1925 | Theresa Haberer, Alexandria |
| 1926 | Inez Harriet Johnson Borg, Cokato |
| 1932 | Laura F. Kangas Neubauer, Denton, TX |
| 1933 | Evelyn G. Converse, Crosby |
| 1934 | Ralph Haakon Johnson, Hopkins |
| 1934 | Muriel Sandeen |
| 1936 | Angeline Lehn Lavig, St. Cloud |
| 1938 | Robert Elton Hanson, Boyd |
| 1939 | Mildred Lang, Kerkhoven |
| 1939 | Allan W. Parry, Cottage Grove |
| 1942 | Edgar Parry, St. Cloud |
| 1945 | Aldys Erickson, Mound |
| 1947 | Edwin O. Isakson, Elk River |
| 1948 | Thomas W. Jones |
| 1948 | Tony Stukel, Warroad |
| 1950 | Catherine D. Ussel, Muskego, WI |
| 1951 | Marion Lundeen Walters, Annandale |
| 1959 | Frances Blizil Kelly, Minneapolis |
| 1959 | Larry Strand, Dickinson, ND |
| 1960 | Edward W. Dahlgren, Cambridge |
| 1962 | Stanley Sederstrom, South St. Paul |
| 1965 | David Terrence McGovern, New York, NY |
| 1972 | Annie Winscher Loscheider, Pierz |
| 1976 | Jerome Wayne Magnuson, Grove City |

Top journalist. Kathryn Bissen, senior from LaCrescent, has been named SCSU's Outstanding Journalism Graduate for 1983-84. For two years Bissen was student general manager of University Tele-Video System, supervising student-produced television programs. Her activities included reporting, writing, directing, anchoring and producing a wide variety of live and taped shows. This spring she earned an Excellence Award for Best Feature Story in a regional competition sponsored by the Society of Professional Journalists. She also has received several scholarships, including one from the Minnesota Press Club. She is a member of Phi Kappa Phi, national honor society. Her career objective is to be a television news anchorwoman.



Rose Moran is the new associate director of development at SCSU. Her duties include directing alumni telephone and mail campaigns, coordinating community and campus fund drives, supervising endowed scholarship programs and serving as secretary to the SCSU Foundation, Inc. She previously served as acting assistant director of development and as a part-time employee in the university relations and development offices. She holds a bachelor's degree in English from SCSU (class of 1983). Moran was general chairperson of the 1984 May Bowle, a benefit providing scholarships for fine arts students at SCSU, St. John's University and College of St. Benedict.

'The run is fun,' says SCSU's new basketball coach



Lloyd "Butch" Raymond has wasted no time since his appointment in March as SCSU's new men's basketball coach.

The former coach at Mankato State University has recruited several outstanding high school and community college graduates for his 1984-85 Husky basketball squad.

"The run is fun" will be Raymond's motto as he brings fast-moving offensive basketball back to

Halenbeck Hall. He intends to make SCSU a contender in the tough North Central Conference as soon as possible.

Raymond compiled a 164-133 record in 11 seasons at Mankato. No previous Mankato coach had won that many games.

A 1963 Augsburg College graduate, Raymond began his coaching career at Fairmont High School in 1966, compiling a 50-15 record in three years. His next head coaching job was at Augsburg, where he won 54 of 79 games.

Raymond's 1975-76 Mankato team was co-champion of the North Central Conference. His teams have won the conference Holiday Tournament twice. During the 1970s, he was named coach of the year in several conference and district selections.

Raymond replaces Sam Skarich, who resigned in January.

Another new SCSU coach is John Perpich, appointed to direct the hockey team for a one-year term. Perpich was assistant varsity coach at the University of Minnesota for four years, after coaching at Aurora-Hoyt Lakes and St. Peter high schools. More recently, he has been chief U.S. scout for the National Hockey League's Central Scouting organization and head coach of the U.S. Junior National team. Perpich replaces Charlie Basch, who resigned in April.

Business groups help buy computer with bowling funds

If you're going to raise money for a good cause, you might as well have fun doing it.

That was the approach of SCSU College of Business alumni and student organizations in generating \$2,500 toward the purchase of an IBM microcomputer for the Business Computer Laboratory.

Called "Bowling for Computers," the project was a popular fundraiser because so many business students and alumni enjoy bowling—and competition. The proceeds were presented as a check to Dean James Marmas by George Scharber, president of the alumni group, at an annual dinner meeting Feb. 23 at Jax Cafe in Minneapolis.

"Given the need for more micros in the Business Building, this gift is a splendid accomplishment," Marmas said. "It's also an excellent example of cooperation between student and alumni groups." Marmas expressed appreciation for the role played by Dr. Wayne Little, professor of business, who serves as faculty representative on the alumni group's board of directors.

Some 75 College of Business alumni, faculty and guests attended the meeting. Allan Lotsberg was the speaker.



A scholarship fund has been established as a memorial to Sheila Wilken-Kerber, an SCSU junior in mass communications who died from injuries sustained in an automobile accident Jan. 7. The accident also took the life of her infant daughter, Marie. Before enrolling at SCSU, she attended the St. Cloud School of Nursing for two years. Her primary career interest was hospital public relations. Gifts to the Sheila Wilken-Kerber Scholarship Fund in Mass Communications should be sent to: SCSU Foundation, Inc., 210 Administrative Services Building, St. Cloud State University, St. Cloud, MN 56301.



Leaders of the SCSU College of Business Alumni Association are pleased with the success of a Bowling for Computers project which raised \$2,500 toward the purchase of a microcomputer for College of Business students. The 1983-84 officers, pictured at the organization's annual dinner meeting last winter in Minneapolis, are, from left: Keith Holtz, '80, treasurer; Dennis Marquardt, '62, secretary; John Dixon, '78, vice president; and George Scharber, '68, president.

Calling all alumni!

Students will conduct an Alumni Phonathon by making phone calls Sunday through Thursday evenings during October and November. They will update alumni addresses while seeking help for SCSU's fall fund-raising campaign. For more information, contact SCSU Alumni Services, (612) 255-4241.

Western hospitality. They're still talking about "Brendan McDonald Day" Jan. 26 in Arcadia, CA. That's when SCSU's president was honored at an alumni dinner meeting attended by Arcadia Mayor Dennis Lojeski at the invitation of Robert Kladifko, a 1959 SCSU graduate who is a junior high school principal in Los Angeles. McDonald also attended an alumni dinner meeting Jan. 25 in San Bruno, a suburb of San Francisco, and an alumni luncheon Jan. 28 in Tempe, AZ. The programs included an audiovisual presentation, "SCSU Revisited," produced by Learning Resources Services. Arrangements were made by Thomas Macgillivray, director of alumni and development, who accompanied Dr. and Mrs. McDonald.

ALUMNI classnotes

1925-1949

LUELLA CADY WILGUS, '25, San Mateo, CA, is a retired teacher ... RUSSELL McKECHNIE, '25, and MYRTLE McKECHNIE, '25, live in Sacramento, CA, where he is an optician and she is a secretary...M. JAY BLAHA, '25, Santa Clara, CA, is retired ... ALBERT J. LENARZ, M.D., '25, resides in Waite Park...EVELYN L. HALL PARENT, '28, '31, lives in Apache Junction, AZ, where she is the owner of the *Rockhound Miner*...MARION HAMMOND JENSEN, '28, Green Valley, AZ, is a music director... GUSTAVE E. OSTERBERG, '30, has retired and lives in Sun City, AZ...HELEN SEIBEL JOHNSON, '30, resides in Mesa, AZ ... AGNES HEDSTRAND RHODE MESENBURG, '30, '57, Phoenix, AZ, is retired...LAJLA JOHNSON LUNDAHL, '30, lives in Willmar and is retired...LUCY CLASEMAN SUSEE, '32, '35, Temple, AZ, is retired after 37 years of teaching...GLADYS PRZIBOROWSKI WALDEN, '32, San Francisco, CA, is retired...MARY HOEHL, '34, is retired after 21 years of teaching in St. Cloud...CARLYLE J. EHRL, '34, Arcadia, CA, is in investments ...MARCUS E. ERICKSON, '36, Redwood City, CA, is retired...FAY V. LANG, '37, Kerkhoven, has retired after working for Ford Motor Co...LAURA SIMER WHITE, '37, New Brighton, is a retired homemaker...HARTLEY SCHULTZ, '38, and NELLIE SCHULTZ, '27, reside in Sun City, AZ...CHET HEINZEL, '38, has retired and lives in El Toro, CA...RICHARD VOTH, '39, and MARY RUEHLE VOTH, '36, have retired and live in Santa Maria, CA...ELSIE R. HUDEC DEW, '40, Big Stone City, SD, has retired after living in India for 15 years and is returning to South Dakota to do social work...CHARLES J. METZROTH, '40, and MARGARET METZROTH, '38, Fargo, ND, have retired...JOSEPH J. SAYOVITZ, '41, and FERN SCHIEDINGER SAYOVITZ, '39, reside in Santa Barbara, CA, where he is a retired engineering director and she is a retired speech teacher...LENORE FAKL ANDERSON, '41, Minong, WI, is a special education teacher...MADONNA HAZEN ERKENBRACK, '41, Vallejo, CA, is a business instructor...ELLSWORTH S. WOESTEHOFF, '42, and MARGARET ANN BENGTON WOESTEHOFF, '44, are retired and living in Fairport, NY...SHIRLEY SLOCUMB, '44, Duluth, is a teacher...DR. H.C. RUSTAD, '47, Sioux Falls, SD, is an assistant superintendent of schools...AUDREY G. GORECKI, '47, Winona, is a math instructor...PAUL E. BUSCH, '48, lives in Roseville, where he is a teacher...DR. ALFRED A. HANNER, '49, St. Paul, is a principal...EDWIN T. PARRY, '49, is a high school principal in Sebeka...PHILIP R. CROLIUS, '49, Jackson, is an office education instructor.

1950-1959

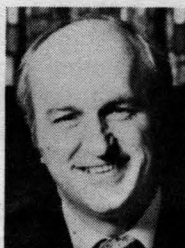
LEE C. GRESSER, '50, Maple Grove, is a vocational school administrator...CHARLES PETTIT, '50, Brainerd, is a math and accounting instructor at Brainerd Community College...MARLYS M. SANFORD, '50, '60, Princeton, is a fifth grade teacher...ODIN J. NYSTROM, '50, lives and teaches in Tower ... AMBROSE J. ILLETCHKO, '51, Minneapolis, is an elementary school teacher...REUBEN LARSON, '52, Lake Elmo, has been appointed director of international human resources for 3M Company ...ALLEN W. POSTHUMUS, '52, and L. JOYCE OVERMEYER POSTHUMUS, '51, reside in Stillwater, where he is principal of Marine School...KENNETH W. GREEN, '52, Minnetonka, is a teacher...MARGUERITE P. ARCHER, '52, '55, San Francisco, CA, is retired ...SAM WENSTROM, '54, St. Cloud, was the honored guest at a benefit "roast" Jan. 31 at St. Cloud Holiday Inn. Nearly 200 persons attended the event, which raised \$5,600 for the March of Dimes. Wenstrom is assistant administrator for personnel and public relations at St. Cloud Hospital...LAVAUGHN BANGSTON, '54, Hopkins, is a reading resource teacher...ART BLASKE, '55, lives in Hollywood, CA, where he is a newscaster...LLOYD



POEPPING

POEPPING, '56, Fridley, has received an MSI Insurance People Helping People Award...JIM MILLS, '56, Hutchinson, is a secondary school vocational director...ELIZABETH J. SINKO, '56, Chisholm, teaches in Hibbing...DONALD FRIE, '56, is a teacher and coach in Browerville...JOHN STEIN, '57, and VIVIAN AANERUD STEIN, '63, reside in Alamo, CA, where he is a criminal investigator and she is an operations supervisor for Social Security...DIANE B. CHAPPUIS ROST, '57, Faribault, is a special education teacher...JOHN G. LIND,

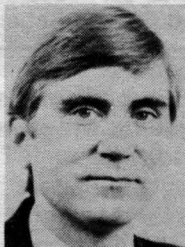
'57, Bloomington, is a media specialist...JOHN B. HARVEY, '57, Tucson, AZ, is a teacher...MEL PEARSON, '57, McArthur, CA, is a self-employed dentist ... FREDERICK K. VARNER, '58, Wheaton, is president of R&V Sales...MICHAEL C. LUND, '58, Paynesville, is a middle school principal...JAN WATKINS, '58; St. Cloud, is a domestic engineer ... MURIEL BRATTLAND CHRISTENSON, '58, Lincoln, NE, is a special education teacher...JO HOKANSON SWART, '58, Brooklyn Center, received the 1983 Woman of Achievement Award from Alpha Kappa Chapter, Delta Kappa Gamma...AL KREMERS, '59, St. Cloud, has been named group executive at General Signal...ARLYCE FOSTER MAX, '59, International Falls, is a first and second grade teacher...ALAN STALEY, '59, Woodbury, is supervisor of administrative services for South Washington County Schools...GENE PORTUQUE, '59, is a teacher in International Falls...ROBERT EDWARD KLADIFKO, '59, Arcadia, CA, is a junior high school principal...JEAN DOTSETH, '59, Winona, is a school counselor.



KREMERS

1960-1969

ROBERT E. MYERS, '60, Irvine, CA, is vice-president in charge of marketing for Petrolane...KAREN WASS MAGNUS, '60, '69, St. Cloud, is a supervisor of student teachers at SCSU...JOHN L. FORT, '60, is a teacher in Cottage Grove...JAMES A. LOECKEN, '61, Swanville, is a school superintendent...DWAINE LIND, '61, Minneapolis, is chairperson of the Department of Education at Bethel College...CHARLES MOURIN, '61, Aurora, is a retired teacher and a member of the Minnesota Higher Education Coordinating Board...ROBERT J. SCHMITT, '61, Grand Rapids, teaches social studies...DOUGLAS BOSMA, '62, Pleasanton, CA, is an administrative manager for Clorox...JAMES C. LONG, '62, Coon Rapids, is a business education instructor at Anoka Senior High School...DOROTHY THIELGES, '62, Riverside, CA, is a seventh grade math teacher...JOANNE PUTZ SNAVELY, '62, Casa Grande, AZ, is a self-employed potter...DAVID L. GLEASON, '62, and DORIS MATSUO GLEASON, '62, reside in Howard Lake, where he is a band director. She teaches at Maple Lake...DEL SCHIFFLER, '62, Woodbury, is a math instructor and basketball coach...CLAYTON T. JOHNSON, '63, Minneapolis, is president of Twin City Die Casting Co...JILL HALVERSON, '63, Los Angeles, CA, is director of the Downtown Women's Center...DONALD B. MAGNUSON, '63, lives and teaches in Stillwater...DARRELL B. JOHNSON, '64, Hollywood, CA, is a law professor...HAROLD E. OLSON, '64, '70, Caledonia, is a teacher...JERRY MARTINSON, '64, Wayzata, teaches in Shakopee...DONALD L. BURKE, '64, Sun City, AZ, is retired...BONNIE THOMPSON HAUG, '64, Bloomington, is a first grade teacher...WILLIAM EDWIN TAYLOR, '65, Portland, OR, is a pastor...RALEIGH E. KINNEY, '65, Tempe, AZ, is a professional artist...LLOYD POGATCHNIK, '65, Elk River, is a science teacher...MERRILL V. WIESE, '66, '70, Wilson, NC, is president of Toyota of Wilson...CARMEN GRAUPMANN HOLUM, '66, Ketchikan, AK, retired from teaching in 1979...JOHN CLARK, '66, and BRENDA OLSON CLARK, '67, reside in Chandler, AZ, where they are both realtors for Remax Realty...KENNETH LANTTO, '66, Annandale, is a farmer...CLIFFORD T. BUTLER, '66, lives in Forest Lake, where he is an elementary school principal...PAUL WILSON MITCHELL, '66, Shakopee, is a special education administrator...RONALD W. BERG, '66, St. Cloud, teaches in Albany...DAGNY J. DUUS, '67, Brainerd, is a media generalist...RICHARD WEISE, '67, Minneapolis, is an executive director for Film in the Cities...JAMES HENRY PETERSEN, '67, New Brighton, is an elementary school principal...JOSEPH A. PODAWILTZ, '68, Schaumburg, IL, employed by A.O. Smith Harvestore Products, Inc., has been promoted to director of human resources ... DONALD J. SCHULTZ, '68, Janesville, is a science instructor ... RICK SETTERBERG, '68, and SANDY ALBRIGHT SETTERBERG, '69, reside in Phoenix, AZ, where he is manager of Setterberg Jewelry of Sun City and she is a Mary Kay consultant...EILEEN KEETLEY, '68, St. Paul, teaches physical education...DAVID E. MARSHALL, '68,



PODAWILTZ

Stanchfield, teaches third grade in Cambridge...GARY VON HOLTUM, '68, Janesville, is an elementary teacher ... GARY ZITLOW, '68, St. Cloud, is vice president of Adkins Securities...RAYMOND JOHANSON, '68, is a teacher in Staples...DAVID E. JOHNSON, '68, Cambridge, is an English instructor...PAUL EDWARD MOSBY, '68, New Brighton, is the owner and president of Travel Ltd...RUTH D. BOLLINGBERG, '68, Plymouth, is an elementary school teacher...DENNIS M. FABEL, '69, is assigned to the American Embassy in Paris to assist law enforcement agencies in Europe, Africa and the Middle East in investigating the counterfeiting of U.S. currency...SHARON K. LORTON, '69, '77, Forest Grove, OR, is a third-year student at Pacific University College of Optometry...JOAN L. WILCOX, '69, is a teacher in Maple Lake...KEVIN CUMMINGS, '69, Deadwood, SD, is an agent for Coburn Insurance Agency...BEVERLY D. BRUTON, '69, St. Cloud, is a retired teacher...WILLIAM EISENREICH, '69, and CAROLINE NELSON EISENREICH, '68, Richmond, teach in Cold Spring ... DALE D. ERICKSON, '69, Wadena, is a social studies instructor at Bertha-Hewitt High School ... RAYMOND JOSEPH NELSON, '69, Chisago City, teaches fifth grade in St. Paul...LAURENCE E. MERCIER, '69, and CAROL L. FULLER MERCIER, '68, reside in Grand Rapids, where he is a teacher.

1970-1974



WITTE

KAAREN WITTE, '70, Tulsa, OK, is the talk show host of "Every Single Day," author of *Great Leaps in a Single Bound*, and a church singles director ... CHARLES ELLIOTT, '70, Flint, MI, is a high school teacher for the mentally impaired...ALAN KEITH PAYNE, '70, Bloomington, is arena manager for the City of Richfield...MARVA JEAN HUTCHENS, '70, Robbinsdale, is a minister...LOWELL JOHNSON, '70, is a teacher in Cambridge ... DELON MUSSELMAN, '70, Faribault, is a work experience teacher coordinator...RICHARD B. HINRICHS, '70, is a teacher in Olivia...CAROL L. JENSON, '70, Rush City, is a counselor in Cambridge...CHERYL PEHLE, '70, Wabasha, is an English instructor...LLOYD STALLKAMP, '70, Black Hawk, SD, is an electronics and computer technology instructor at National College...MICHAEL J. LEARY, '71, Chicago, IL, has been promoted to senior associate at Communispond, Inc...AL RUTMAN, '71, Richmond, VA, is director of health and physical education at Jewish Community Center...DAVID THOMPSON, '71, Lakewood, NJ, is a laboratory sales representative...CHERYL WENDORF BURK, '71, Chatfield, is a business instructor and computer coordinator for Wyckoff Public Schools...GEORGIA PARRISH, '71, and EILEEN PARRISH, '71, Campbell, CA, are employed by Mission College as a library clerk and computer operator...NOEL C. BAILEY, '71, and PATRICIA BAILEY, '66, live in Aitkin, where he is a teacher and coach and she is an advertising manager...BEVERLY FISCHERADKINS, '71, St. Cloud, is a math instructor...RICHARD CHARLES ANDERSEN, '71, Wyoming, works for Land O'Lakes, Inc., as a marketing director...JAMES MICHEAL SHEY, '71, Coon Rapids, is a teacher...LARRY J. NELSON, '71, and BARBARA MEAD NELSON, '72, reside in Springfield, IL, where he is employed by Horace Mann Educators as assistant vice president for agency development...WILLIAM F. BETTENDORF, '71, Sauk Rapids, is a school counselor in St. Cloud...RUSSELL DEAN SCHOLER, '71, San Francisco, CA, is a Nautilus trainer at Cole Valley Fitness Center...RANDALL A. CHRISTENSEN, '71, Faribault, is a teacher...MARK S. RAJKOWSKI, '72, Concord, CA, is western regional manager for the worker's compensation division of Gates, McDonald & Company...MARY SUE PARKER, '72, St. Cloud, is commercial loan officer for First American National Bank...MARVIN TOP, '72, '82, Hutchinson, is employed by Blue Shield of Minnesota as a programmer in the data processing division...ROGER H. DEMAY, '72, Grand Island, NE, is a research station manager...JOHN DOUGLAS KIRBY, '72, San Diego, CA, is an attorney...ROBERT T. RUPAR, '72, Forest Lake, is a music instructor in Cambridge...JEANETTE MARIE HERMANN THOMPSON, '72, Murdock, is a farm wife...THOMAS CLOUGH, '72, is an



RAJKOWSKI

(1970-1974 cont'd)

assistant principal in Lake City...KRIS PFLEPSEN, '72, St. Cloud, is director of Stearns County Developmental Achievement Center... LEONARD KISKIS, '72, Plymouth, is associated with First National Bank of Minneapolis...STEVEN R. HANSEN, '72, is a teacher in St. Cloud...ERVIN ANDERSON, '73, Guilford, CT, is office manager for



New York Life Insurance Co....SHIRLEY EICHTEN, '73, Dallas, TX, is a sales representative and artist for an advertising agency...JAMES CRENNNA, '73, Brooklyn Park, is a vice president of John G. Kinnard & Co... ROBERT BOWDEN, '73, lives in Paynesville, where he is a fifth grade teacher... DOUGLAS TRAMPE, '73, North Branch, is a special education teacher in Pine City... DELORIS MAE WARREN SYMALLA, '73, Bertha, is a special learning disabilities instructor...ROSS LYNCH, '73, '75, Waunakee, WI, is a rehabilitation psychologist and president of Professional Rehabilitation Services, Ltd....PATRICIA A. STONE, '73, St. Louis Park, teaches in Minneapolis...ROBERT MICHAEL STRILICH, '73, Albuquerque, NM, is a State Farm agent...JEAN ANNE LOHMANN FRENCH, '73, Vail, CO, is a bookkeeper at First Bank of Avon...JODY MORTRUDE ANDERSON, '73, Champlin, is a third grade teacher in Elk River...DAVID K. THOME, '74, Lynchburg, VA, is senior research engineer at Babcock & Wilcox Lynchburg Research Center... LINDA SCHNORENBERG PROKASKY O'GORMAN, '74, Hastings is a private piano instructor...MICHAEL SAGER, '74, San Francisco, CA, is a certified public accountant for Daiker & Co....WANDA KUMMET, '74, is a teacher in Tucson, AZ...G. ED HAHN, '74, Glendora, CA, is a district supervisor for Volume Shoe Corp....ROXANNE DEE COTA, '74, St. Cloud, teaches in Cold Spring...RONALD D. HERTEL, '74, Louisville, CO, is a social worker...CAROLEA GRAY ZUM BRUANEN, '74, Kingsville, OH, is a pastor's wife...GERARD A. SOBIECH, '74, Forest Lake, teaches and coaches basketball in Circle Pines.

1975-1977

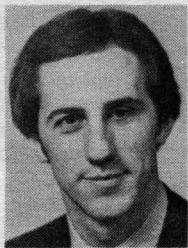
GRETCHEEN PLANTENBERG, '75, Rogers, is a management and organization development specialist at Sperry Computer Systems...JANE DORN, '75, Glencoe, teaches the hearing impaired...EDWARD J. SHANKS, '75, Buffalo, is an industrial arts instructor in Becker...BONNIE GROSS KIENITZ, '75, North St. Paul, is a homemaker...OLE E. JESSEN KLIXBULL, '75, is a teacher in Cold Spring...GARY DUCKWORTH, '75, and KAREN JULIN DUCKWORTH, '74, reside in Davenport, IA, where he is an area manager for Ground Round Restaurants...FRANCES HILL ROWEN, '75, St. Cloud, is a teacher...KAREN THOMPSON, '75, Clear Lake, is an assistant professor of health, physical education and recreation at SCSU...WILLIAM J. MONSOOR, '75, Plymouth, is a science instructor in Golden Valley...HUGH BAUMGARTNER, '75, San Jose, CA, is a sales representative for Bankers Systems, Inc....GALE J. MOORE, '75, is a teacher in Lewiston...DEBRA D. QUEDNOW SCHADER, '75, St. Paul, is a teacher...BILL WICK, '76,'83, St. Cloud, is director of development for Cathedral High School...DOUG WACEK, '76, and BECKY REBSTOCK WACEK, '73, live in Westport, CT. He is senior manager for Peat, Marwick, Mitchell & Co....DEEANN GRIEBEL, '76, Mesa, AZ, is an investment executive for Thompson McKinnon Company...MARK L. PEARSON, '76, Annandale, VA, is a copy editor for USA Today ...NANCY TREBISOVSKY CLARK, '76, Columbia Heights, is a special education teacher...ROBERT A. HEROUT, '76, Sauk Rapids, is employed by Bauerly Bros., Inc....CHERYL LEWAN-DOWSKI KAMPA, '76, St. Cloud, is a math instructor...DAN R. LIND, '76, Minneapolis, is an appraiser for American Appraisal Co...KATHRYN JOHNSON ERPELDING, '76, Watkins, is a farm wife... JULIE PULLAR JOHNSON, '76, Virginia, teaches kindergarten in Aurora...JOEL E. HURLEY, '76, and JANE SCHMECK-PEPER HURLEY, '76, live in Tulsa, OK, where he repairs pianos and organs...JOAN ARNOLD SAMMUT, '76, Hawthorne, CA, teaches deaf and blind people...LINDA MAE WINTZ, '76, Mankato, is a special education coordinator ... DOUGLAS B. BENGTON, '76, Park Rapids, is a math instructor and resort owner...MICHAEL V. PAUL, '77, Portland, OR, is an instructor and loan officer for the American Institute of Banking...DEAN M. RATHE, '77, Denver, CO, is a photographic technician for Technicolor Government Services...THOMAS A. PEDERSON, '77, Lake City, is a fifth grade teacher...LYNNE TELLERS, '77, Robbinsdale, is the first woman to attain the rank of corporal in the Fridley Police Department... CINDY L. ERWIN, '77, Sauk Centre, is a special education teacher in Grey Eagle...LUCINDA DYER SCHREIBER, '77, Houston, TX, is an elementary school teacher...LINDA ROMAN PIERSKALLA, '77, Avon, is a legal assistant for Eller, Schiff & Pearson, Attorneys, St. Cloud...JUDITH LANDECKER HANSON, '77, is a teacher in Cambridge...GLEN J. HENTGES, '77, and SARA PARTCH HENTGES, '72, '76, live in Scottsdale, AZ, where he is senior manager for Peat, Marwick, Mitchell & Co. and she is business manager for Vallenari Associates, Inc....TERRI McCABE STEIDL, '77, Alexandria, is a substitute teacher...RENEE MARIE LINDQUIST, '77, Waite Park, teaches in Cold Spring. teaches in Cold Spring.

1978-1979

BRUCE Q. BAILEY, '78, and ANNMARIE DOYLE BAILEY, '81, reside in Hopkins. He is a certified public accountant and she is a speech/language pathologist...MICHAEL JON PETERSON, '78, Minneapolis, does public relations and fundraising for the Muscular Distrophy Association...CHARLES N. DEMM, '78, St. Cloud, is chairman of the art department at Apollo High School...DONNA JOHNSON HERDEGEN, '78, Litchfield, is a homemaker...REBECCA M. GRAHAM, '78, Stillwater, is an English and French instructor...JAMES J. BOULEY, '78, Stevens Point, WI, is a radio station program director...SIMON C. ECKLUND, JR., '78,

'83, Eagan, is a sales engineer for AMP Incorporated...NANCY HENRY HORSTMAN, '78, Sparks, NV, is an accountant...JOHN DIXON, '78, St. Cloud, is a consultant for Olympus Corporation ... JAMES LAROCHE, '78, Dallas, TX, is director of Mirror Productions, Inc....CAPT. THOMAS M. JOHANNECK, '79, Kelly Air Force Base, TX, participated in operations in Grenada. He is a communications electronics staff officer...JERRY P. MAURER, '79, Isanti, is employed by Cambridge State Hospital as a program service director...SHEILA JO LEEK LEAVELL, '79, St. Paul, is a programmer-analyst for Abbott-Northwestern Hospital...BRIAN K. THOMPSON, '79, Milwaukee, WI, is an account executive for Coca-Cola U.S.A....JUDY LINDQUIST HEMMERLIN, '79, Parkers Prairie, is a recreational therapist at a nursing home...PAMELA GOECKE, '79, Dallas, TX, is brokerage consultant for the disability income branch of Provident Life and Accident Insurance Co....THOMAS KUB, '79, White Bear Lake, is a product development chemist for 3M Company...MARK W. SHEA, '79, Oakland, CA, is an account manager for Bier & Gunderson ... SHARON L. BRUESKE, '79, lives in St. Peter, where she is a behavior analyst at St. Peter Regional Treatment Center...TERRILL G. ANDERSON, '79, Excelsior, is a sales representative for Merrill Chapman Co....CRAIG A. RICE, '79, St. Cloud, is a bank liquidator...JEFFERY RAYMOND KOT, '79, St. Cloud, is a math instructor...CHERYL SPANIER OFTEDAHL, Santa Ana, CA, is an administrative assistant for Quality Systems, Inc....BETH ANN HENGGEN, '79, Los Angeles, CA, is a national account executive for Chilton Corporation...ROBERT E. NEAL, '79, Ventura, CA, is a survey engineer...JOHN GLOEGE, '79, lives in Princeton, where he is a teacher and coach...KIRK REILLY, '79, St. Paul, is an attorney with MacIntosh and Commers...

1980-1981



RANDALL A. GREEN, '80, Wayzata, is an assistant vice president of Piper, Jaffray & Hopwood Inc....YVONNE J. COONEY, '80, St. Cloud, is an accounting manager...JEFF OLSON, '80, is a teacher in St. Paul...JEFFRY SCOTT DRESOW, '80, New Prague, is an industrial engineer for Minnesota Valley Engineering...DAVID BARNHART, '80, and TERRY BLOCK BARNHART, '80, reside in Portland, OR, where he is attending a seminary and she is a preschool/kindergarten director... STEVEN OTTO, '80, and SUSAN KOMP OTTO, '80, live in Overland Park, KS, where he is an industrial engineer...JERRY EICHTEN, '80, Portland, OR, is a television news and sports photographer...CYNTHIA OBERLANDER, '80, Minneapolis, is a project coordinator for Minneapolis Community Development Agency...KEVIN J. ANDERSON, '80, Duluth, is an account clerk...ROCHELLE GOIHL, '80, St. Paul, is a medical technician...MARLYS PENNERTZ, '80, is a teacher in Aberdeen, SD...KAREN ANNE DELIE, '80, Bloomington, is a personnel clerk...AMY JOHNSON GRAMS, '80, lives in Rochester, where she is a product scheduler for IBM...MARY JO WICKER PECKSKAMP, '80, St. Cloud, teaches in Sartell...PATRICK L. BENOIT, '80, Waite Park, is a drywall contractor...PHIL BRAUN, '80, is a student and construction worker...DEBRA GILLITZER TOMASINO, '80, is a teacher in Coon Rapids...CYNTHIA SEELHAMMER, '80, Queen Creek, AZ, is a communications director...PETER C. McLANE, '81, Lynnwood, WA, has received an Eagle Award for Outstanding Sales Performance from the Argyle Division of Sherwood Medical...RICKY W. HANSEN, '81, Minneapolis, is a second lieutenant in the Air Force...DAN O'BRIAN, '81, Edina, is a Mastercard/Visa representative for First Banks System...DANIEL J. LARKIN, '81, St. Paul, is an assistant manager for Goodman Jewelers ...ALVIN WIEME, '81 and CATHY SKOREN WIEME, '81, live in St. Cloud. He is a residence hall director at SCSU and she is a research and records assistant at St. John's University...LEAH L. RANDALL, '81, Waite Park, teaches at Rocori High School... MICHAEL LEWIS, '81, Hastings, is a technical support programmer analyst...LUCY HUPPERT, '81, St. Paul, is employed by Metro Sales, Inc., as a support services representative... BRENDA JACOBSON-HOLMGREN, '81, lives in Elk River, where she is a social studies instructor and volleyball coach...KIRK KILIAN, '81 and MARY CROATT KILIAN, '81, reside in Los Angeles, CA, where he is a stockbroker and she is a financial analyst... RANDALL BENOIT, '81, St. Cloud, is a teacher...GREGG CLARKE, '81, Brooklyn Center, is an energy auditor for Control Data...LINDA RICHTER, '81, Monticello, is a special education teacher... PATRICIA A. ZENNER, '81, St. Cloud, is manager of D.B. Searle's Restaurant... KATE LIEBSCH, '81, San Bruno, CA, is a quality control supervisor...THOMAS R. MILLER, '81, Rochester, is guest relations manager for Kahler Hotel...TOM BALCOM, '81, San Francisco, CA, is an ensign in the Navy...ANITA HENDRICKY, '81, is an art teacher in St. Cloud... JUDITH J. MURRAY, '81, Shawnee, KS, is a marketing analyst for Hallmark Cards...SUSAN M. WAGNER, '81, Hutchinson, is a fitness instructor...WILLIAM HARE, '81, Cohasset, is a teacher...IVA HAUKENES, '81, Roberts, WI, is a speech and hearing clinician.

1982-1983

KAREN A. DORN, '82, Hopkins, is credit officer for Norwest Bank MetroWest...JOHN M. CARROLL, '82, St. Paul, is employed by Aero Systems Engineering as a senior engineer...PAUL C. JOHNSON, '82, Crystal, is service coordinator for Dart and Kraft...TRACY NELSON, '82, St. Cloud, is an assistant staff auditor for Prudential Insurance Co....ANNE E. CAMPBELL, '82, Bloomington, is a graduate student ... JUDY LEA DORAN, '82, St. Cloud, is a waitress at the House of Pizza...SHARON ADAMEK SHEA, '82, Oakland, CA, is a child care counselor...PEGGY ANN MEHLE, '82, Houston, TX, is an accountant for Marathon Oil Co....MONICA MYKLEBUST, '82, San Francisco, CA, is a

cytogeneticist...TOM ALECKSON, '82, Thousand Oaks, CA, is employed by Data-Byte Co. as a sales representative ... KATHERINE ERICKSON, '82, Riverside, CA, works in pharmaceutical sales for Bristol Labs... DAVID ELLSWORTH LOWE, '82, St. Louis Park, is a field engineer...DAVID E. KOOPMEINERS, '82, New Brighton, is a quality assurance analyst for Norwest Information Services...JOANNE MYKLEBUST NELSON, '82, lives in St. Cloud, where she is a math instructor ... ROY FRANK BRANDT, JR., '82, San Diego, CA, is employed by General Dynamics...PATRICIA A. BAYMUER, '82, Minneapolis, is employed by Entec, Inc....MARY FRANCES WOELL, '82, lives in St. Cloud, where she is a graphic designer ... LANE ALAN ANDERSON, '82, Finlay, OH, is a nursing home administrator ... JAMIE E. GABBERT, '82, lives in Bakersfield, CA, where she is a teacher and coach...RANDY THOMPSON, '82, Willmar, and KIM O'ROURKE THOMPSON, '82 live in Willmar, where he is a police officer and she is self-employed...JEFFREY E. LINDSTROM, '82, Santa Fe, NM, is a construction manager and analyst...KEVIN LARSON, '82, St. Louis Park, is a machine shop supervisor...JULIE ANN HUTCHENS, '82, St. Cloud, teaches in Sauk Rapids...MAYLIN K. OLSON, '82, is a teacher in Mitchell, SD...LANA J. HOLT, '83, St. Cloud, is a convention sales representative for the St. Cloud Area Chamber of Commerce Convention and Visitors Bureau...JEAN THIMIJJAN SAHLI, '83, Chanhassen, is a secretary at Sperry Defense Systems...THERESA SCHOEN-ECKER, '83, is a vocational and special education teacher in Fergus Falls...LYNN SLATER, '83, White Bear Lake, is a media analyst for Bozell & Jacobs Advertising,



Inc....ELIZABETH THIEL, '83, Eveleth, is a recreational therapist for Arrowhead Nursing Home...TODD H. REBER, '83, Eagan, is a test development engineer...JOHN POSTIER, '83, resides in Rochester, where he is a teacher, salesman, and coach...PAMELA JOY HENRICKSON, '83, Aurora, CO, is a public relations secretary...MARK C. HANSON, '83, St. Paul, is a local government auditor...TERESA MAVIS, '83, New Hope, teaches the behaviorally impaired...DEBORAH K. SEYKORA, '83, Minneapolis, is an assistant buyer for Donaldson's...MARK EDWARD PIERCE, '83, Boston, MA, is an administrator for ARA Services at Boston University...KENNETH G. LINN, '83, Rochester, is a systems programmer for IBM...MARY J. PICKART, '83, Spooner, WI, is a special education teacher...MARY A. TALBERG, '83, Marcell, has completed Army basic training at Fort Jackson, SC...MARY SNOBL, '83, Roseville, is an associate system analyst for NCR Comten...CLARA A. ZWEBER, '83, St. Paul, is a sales executive...LAURIE A. HEALY, '83, St. Paul, is employed at Minnesota Mutual Life Insurance Co....ELLEN FAHRENKROG, '83, Minneapolis, is an office manager...DEBRA RAFLOWITZ, '83, Houston, TX, is Sundry School coordinator at the University of Houston...THOMAS BLITVICH, '83, Castellon, Spain, is a manager of Ceravir, S.A. ... MITCHELL A. STROHMAN, '83, Sioux City, IA, is a weekend television sports anchorman...NYLA J. KASSUBE, '83, New Hope, is a medical claims examiner... EILEEN M. NORTON, '83, Ventura, CA, is a program coordinator...GREG GRELL, '83, Fairmont, is a sports anchorman...Capt. ROGER N. ANDERSON, '83, Breckenridge, has completed the Army Command and General Staff School officer course.

Watchabeendoin?

Your former classmates would like to read about you in the Classnotes section of the next Outlook. This coupon makes it easy. Good quality close-up black-and-white photos also are requested.

My News _____

Name _____
(If applicable, please include maiden name)

Class _____

Phone () _____

Social Security Number _____

Address _____

Name of Employer _____

My Title _____

Employer's Address _____

Employer's Phone () _____

Mail the coupon to Alumni Services, St. Cloud State University, St. Cloud, MN 56301. Phone: (612) 255-4241.

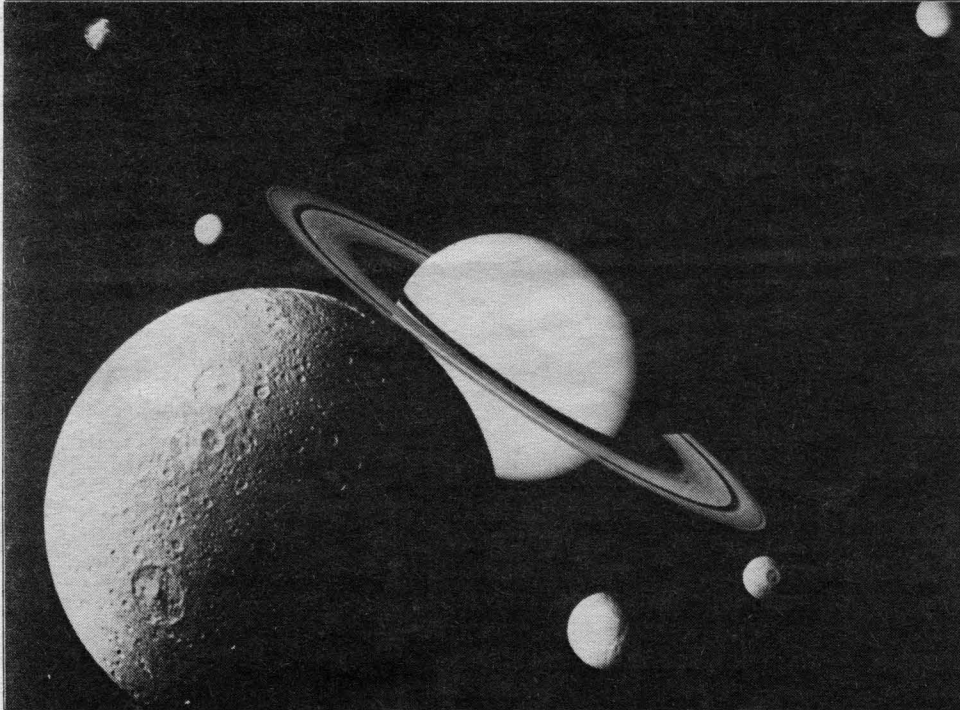
ST. CLOUD STATE UNIVERSITY



outlook

Alumni Services
St. Cloud State University
St. Cloud, MN 56301

ADDRESS CORRECTION REQUESTED



This montage of Saturn rising behind the moon Dione is among thousands of photographs, slides, videotapes and lesson plans available starting this fall at SCSU's new Aerospace Teacher Resource Room. Located in the Learning Resources Center, the room is the second established by the National Aeronautics and Space Administration (NASA) in cooperation with the Lewis Research Center, Cleveland, Ohio. Dedication of the room, set for Oct. 4, may include a campus visit by an astronaut.

NON PROFIT ORG.
U.S. POSTAGE

PAID

ST. CLOUD, MN 56301
PERMIT NO. 460