

St. Cloud State University

theRepository at St. Cloud State

Summer

Course Catalogs

1953

Summer Course Catalog [1953]

St. Cloud State University

Follow this and additional works at: <https://repository.stcloudstate.edu/sumcat>

Recommended Citation

St. Cloud State University, "Summer Course Catalog [1953]" (1953). *Summer*. 32.
<https://repository.stcloudstate.edu/sumcat/32>

This Book is brought to you for free and open access by the Course Catalogs at theRepository at St. Cloud State. It has been accepted for inclusion in Summer by an authorized administrator of theRepository at St. Cloud State. For more information, please contact tdsteman@stcloudstate.edu.

1953 Bulletin

SUMMER SESSIONS

ST. CLOUD STATE TEACHERS COLLEGE



SUMMER SESSIONS

THE SESSIONS

June 8—July 17
July 20—August 21

THE SUMMER QUARTER

June 8—August 21

CLASS SESSIONS

FIRST SESSION: Classes will meet regularly five days a week from Monday to Friday, inclusive.

SECOND SESSION: Classes will meet regularly six days a week from Monday to Saturday, inclusive.

SUMMER QUARTER: The first six weeks classes will meet regularly five days a week from Monday to Friday, inclusive.

The last five weeks classes will meet regularly six days a week from Monday to Saturday, inclusive.

THE FACULTY

The resident faculty will serve during the summer sessions.

THE DEGREES

Bachelor of Science with qualifications for teaching in elementary schools, the junior and senior high schools, and the special subject fields, such as Business Education, Industrial Arts, Fine Arts, Music and Physical Education depending upon the curriculum selected.

Provisional curriculum which prepares for teaching in the elementary and rural schools.

Bachelor of Arts conferred upon students who have met the requirements in general education. Majors may be arranged in one of several departments or between departments upon consultation with the adviser.

Associate in Arts conferred upon students who have completed 96 quarter hours in general education or pre-professional areas.

RENEWAL OF CERTIFICATES

Credits may be earned for the renewal of certificates which will also apply on the Provisional or four year curriculum at the college. Every effort will be made to plan programs for teachers on permits so they may qualify for a certificate.

REGISTRATION DAYS

FIRST SESSION: Monday, June 8

SECOND SESSION: Saturday, July 18

REGISTRATION DAY

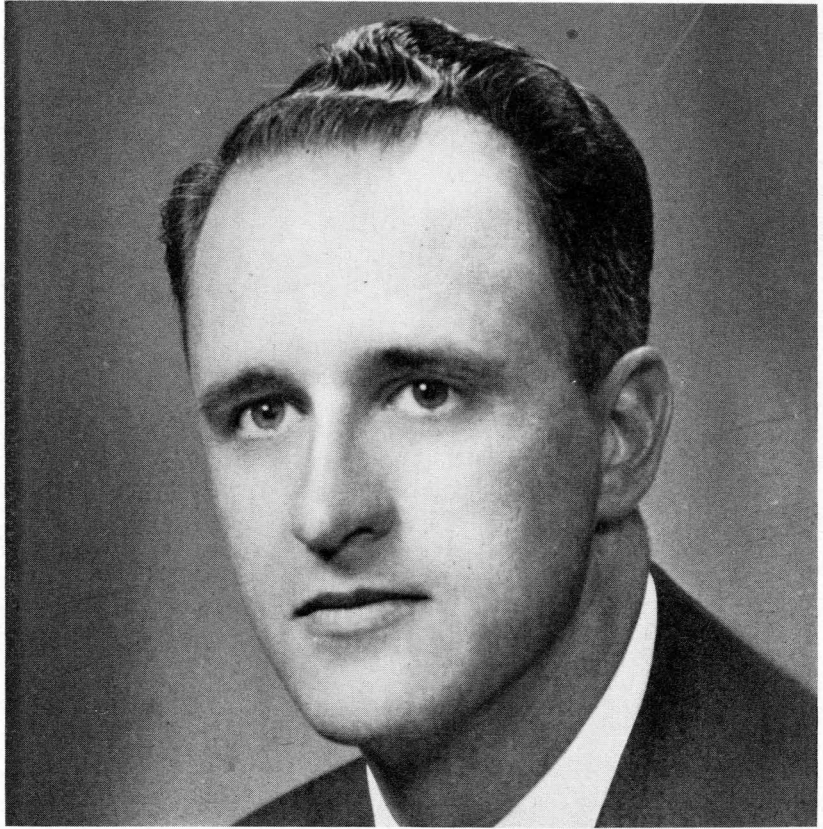
SUMMER QUARTER: Monday, June 8

**B
U
L
L
E
T
I
N**

ST. CLOUD STATE TEACHERS COLLEGE

1953





Greetings from the President



At the St. Cloud State Teachers College we look to the summer sessions as a time of unusual opportunity. The two summer sessions make it possible for regular session students as well as teachers-in-service to move forward in the job of achieving their vocational objectives. The unusual advantage of summer session lies in the fact that this is possible in an atmosphere of relaxation and friendly interest.

The course offerings for the summer of 1953 cover a wide variety of interests. The faculty is excellent. The housing facilities are attractive and pleasant. The opportunities for recreation are unexcelled.

We invite you to share a pleasant summer with us.

GEORGE F. BUDD



**LAWRENCE
HALL**

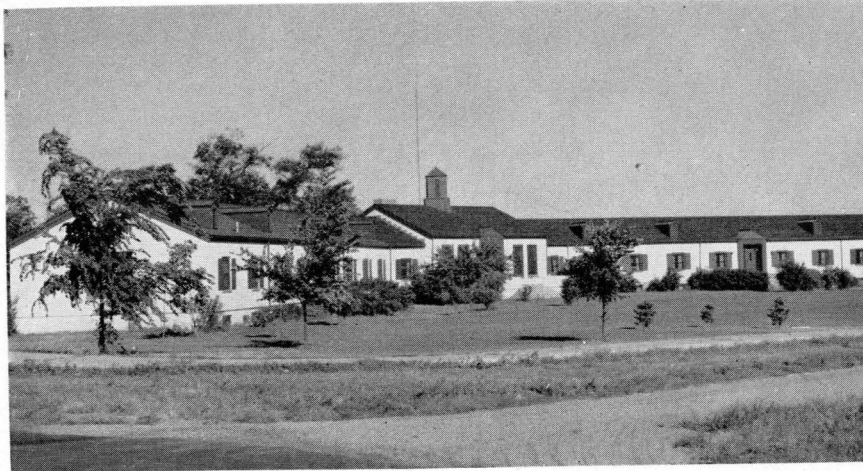


**CAROL
HALL**



**SHOEMAKER
HALL**

Living



BRAINARD HALL

SHOEMAKER HALL

SHOEMAKER HALL will be available to women students both sessions. Applications for rooms with an accompanying deposit of \$5.00 should be addressed to the Dean of Women. Please state the definite period for reservations; i. e., first session, second session or both sessions. Checks should be made payable to the State Teachers College. Ten cents for exchange should be added to personal checks. Postal money orders are accepted without discount.

Bills for board and room are payable before Wednesday noon each session. Reservations for the summer session may be cancelled with refund of the \$5.00 deposit fee up to June 1, 1953.

Students living in Shoemaker Hall will take their meals at the college cafeteria.

The Hall will be open to students any time after noon, Sunday, June 7.

ROOMS IN PRIVATE HOMES

For men and women. Room rent varies from \$4.00 to \$5.00 per week per student. Addresses of approved homes may be obtained at the offices of the Deans of the College.

Accommodations



COLLEGE CAFETERIA

The college cafeteria will serve three meals daily, including Saturdays and Sundays, to students living in Shoemaker Hall and to off-campus students.

COST OF ATTENDANCE

THE TUITION

Each Session:

Residents of Minnesota	
Per quarter hour.....	\$2.00
Non-residents	
Per quarter hour.....	2.00
Non-resident fee.....	5.00

THE FEES

Each Session:

Deposit.....	\$3.00
Activity.....	5.00

FEES FOR SPECIAL INSTRUCTION

Instruments, Piano or Voice

For a series of 6 lessons.....	\$ 7.50
For a series of 12 lessons.....	15.00
Physical Education, each session.....	1.00



Special

AVIATION EDUCATION

A course designed to prepare teachers to use the vocabulary, information and teaching materials of the Air Age. No previous experience in aviation is necessary. Topics include: Why a plane flies, Safety in Aviation, Jobs in Aviation, Navigation, Weather in Aviation, Teaching materials. Students who complete the class work earn three quarter hours of credit. An additional one quarter hour of credit may be earned by taking eight clock hours of flight instruction.

AERO CLUB

The T. C. Aero Club owns and operates a plane which is hangared at the St. Cloud airport. Students who are members of the club use the plane for instruction, and for local and cross country flying.

PSYCHO-EDUCATIONAL CLINIC

The Psycho-Educational Clinic affords opportunity for experiences in the diagnosis and correction of disabilities of children including such areas as speech, hearing, reading, study skills, and behavior. The Physical plant in Building B includes a reception room, individual testing and therapy rooms, a large remedial reading room, an observation room, and demonstration rooms.

KINDERGARTEN

A course for students preparing for the Kindergarten primary field. This course will include Kindergarten Education 352 taken concurrently with student teaching in the kindergarten.

LIBRARY SCIENCE

477, 478, 479 will be offered the first summer session. These courses are planned for students who have completed 16 quarter hours in Library Science and wish to complete a minor in this field.

Unit I will be offered at the Bemidji State Teachers College.

Unit II will be offered at the Moorhead State Teachers College.

Unit III will be offered at the St. Cloud State Teachers College.

READING CORRECTION

Education 421—The Analysis and Correction of Reading Disabilities. A general course of value to all students and teachers. Emphasis will be placed on general procedures which will help to discover the nature and causes of reading difficulties and the possible approaches to correction.

4 credits

Education 423—Practice in the Analysis of Reading Disabilities. This course is recommended for students and teachers who wish to specialize in reading correction. Cases coming through the Psycho-Educational Clinic will provide practical experiences in analyzing reading disabilities. Clinical procedures emphasized will include evaluations of vision, hearing, mental ability, interests, and achievement.

4 credits

Features



RECREATION

The following courses will be offered and will apply on a Recreation minor:

Education 216—Audio Visual Aids in Recreation	1 credit
Physical Education 218—Games, Stunts and Player Olympics	1 credit
Physical Education 322—Team Sports	1 credit
Physical Education 324—Adult Recreation	1 credit
Speech 241—Recreational Dramatics and Story Telling	3 credits

The work offered will be of value to those interested in a full-time career as a recreation director for the community, an industry, or an institution, as well as for those teachers who desire to work during the summer as community recreation directors.

SUMMER THEATRE WORKSHOP

This summer, extending over both sessions, St. Cloud Teachers College will offer a Theatre Workshop. Course offerings and co-curricular experience in play production will be available to (a) high school play directors already in the teaching field, (b) teachers in training on the campus, (c) high school graduates interested in speech education who wish to begin college training during the summer sessions.

The following courses will be offered the first summer session:

Speech 230	Oral Interpretation	3 credits
Speech 240	Stagecraft	2 credits with laboratory to be arranged.
Speech 241-2	Dramatics	3-4 credits

The above mentioned courses will be open to freshmen.

During the second summer session the following courses not open to freshmen will be offered:

English 447	History of Drama	4 credits
Speech 440	Advanced Play Production	2 credits

Freshmen will take general education constants during the second summer session and will be permitted to take part in scenes and one-act plays.

A complete full-length play, suitable for high school production, will be cast and in rehearsal during the first summer session and will be presented for the public during the second summer session. Try-outs for this production will be open to all summer session students.

ALUMNI ASSOCIATION

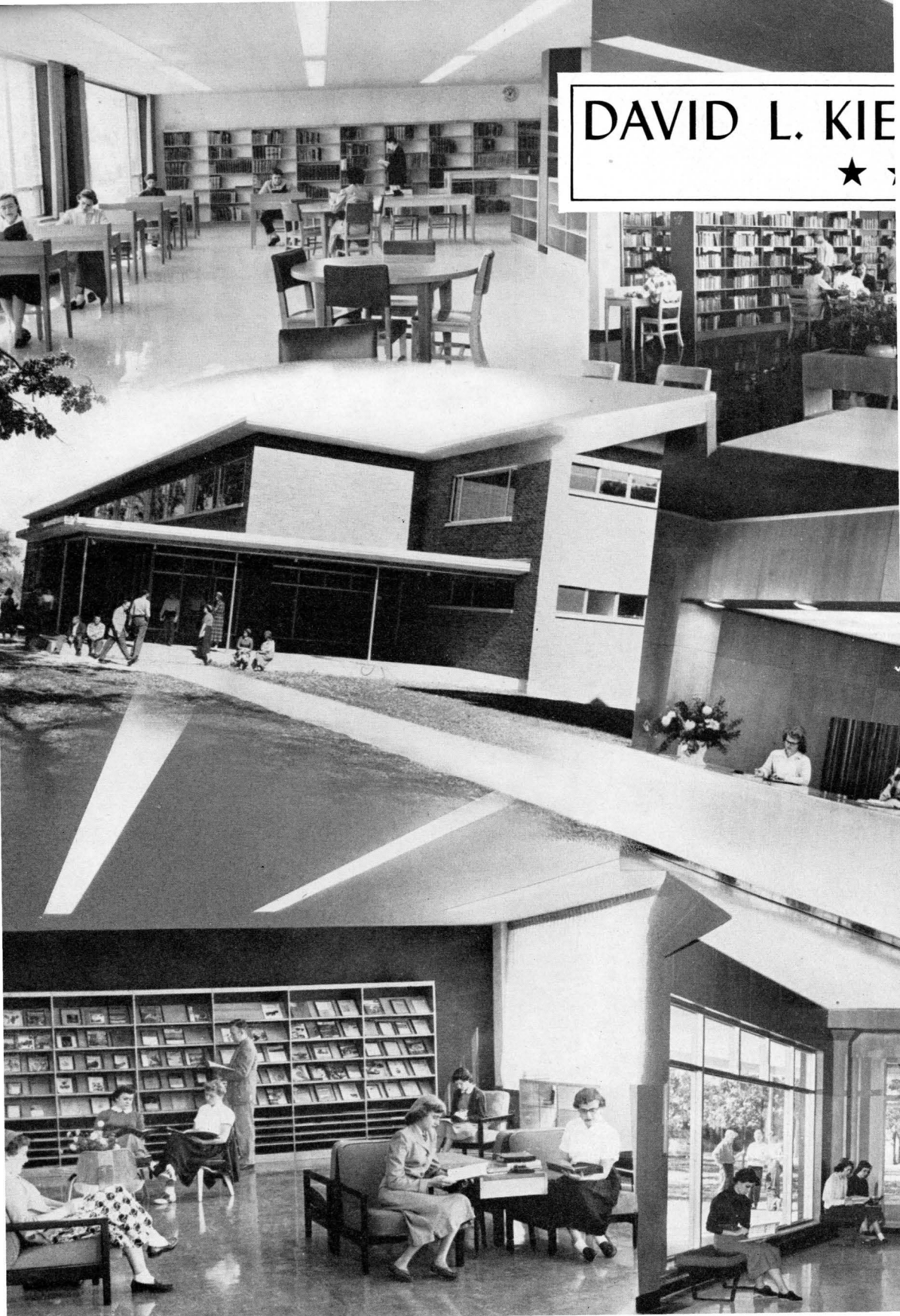
The college has an active and loyal Alumni Association composed of life members. It is organized as a corporation under the statutes of Minnesota and its main purpose is "to promote a more intimate relationship between the St. Cloud Teachers College and its Alumni, and to advance their mutual interests as well as those of popular education in the State of Minnesota." The life membership fee is three dollars.

Miss Helen Hill, executive secretary, has an office in Stewart Hall, Room 103.

VETERANS BENEFITS

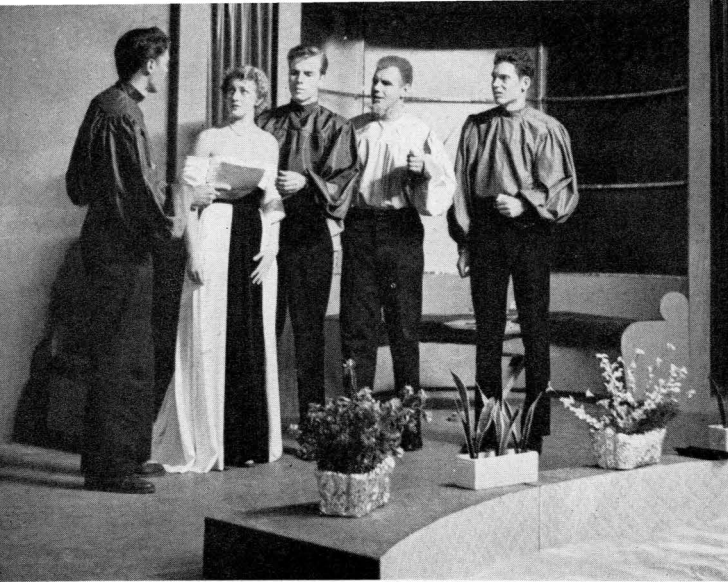
The St. Cloud Teachers College has been designated by the Veterans Administration as an approved college for the training of Veterans under the Servicemen's Readjustment Act of 1944 (Public Law 346 and 16, and also for the Readjustment act of 1952 (Public Law 550.)

DAVID L. KIE



E LIBRARY





A SCENE FROM "R. U. R."

Recreation and Entertainment



HEALTH AND PHYSICAL FITNESS

More than ever with the responsibilities each person must assume there is need for attention to health and for opportunities for wholesome exercise.

Recognizing the increased need for personal physical fitness the college will retain its nurse and doctors for the health services. It will also arrange for hospitalization of students whenever necessary for not to exceed one week.

Physical fitness will also be stressed by urging students to participate in the many kinds of activities which facilities of the college provide. Among them are archery, badminton, handball, ping pong, shuffle board, golf, swimming and tennis.

RECREATIONAL FACILITIES

Informal gatherings at Talahi Lodge
Tennis courts located on the campus
Picnicking, hiking and camping in the College Woods
Eastman Hall with its three gymnasiums and swimming pool
Track and ball diamond at Sports Field

CO-CURRICULAR ACTIVITIES

Students will have the opportunity to participate in:

Chorus, dramatics, journalism, and speech, intramural programs, games and sports, lectures, concerts, and discussion groups.

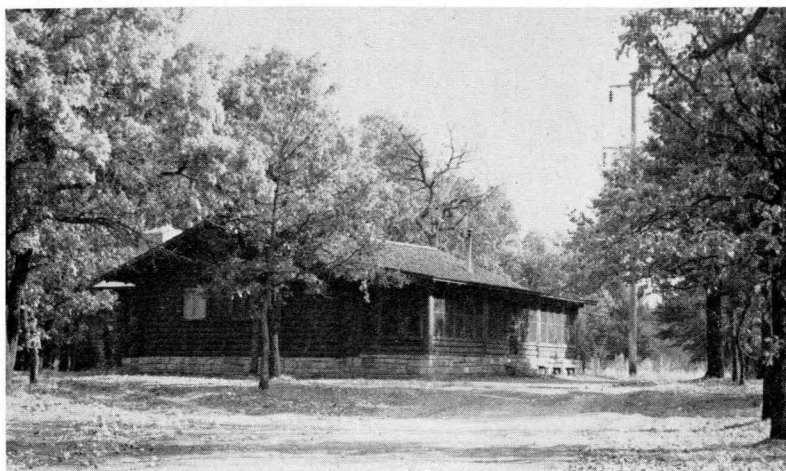


SQUARE DANCING IS A PLEASANT PASTIME

**EASTMAN HALL
GYMNASIUM**



**INFORMAL
GATHERINGS
ARE HELD AT
TALAHI LODGE**



CHORAL CLUB





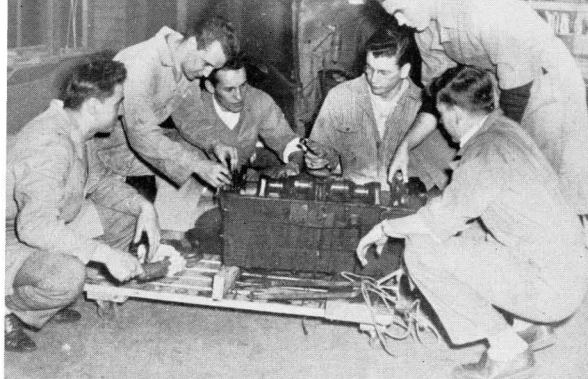
THE LOUNGE



A DICTAPHONE CLASS



CAMERA CRAFT



**INDUSTRIAL ARTS
PROJECT**
(UPPER LEFT)

**PSYCHO-EDUCATIONAL
CLINIC**
(UPPER RIGHT)

**INTERNATIONAL
RELATIONS**
(LOWER LEFT)

AUDIO-VISUAL EDUCATION

Schedule



TENTATIVE SCHEDULE—FIRST SESSION

FIRST PERIOD—7:30 A. M.—8:50 A. M.

Art 152—Principles (3 crs.)	Ind. Arts 205—Basic Crafts (3 crs.)
Art 340—Painting for Pleasure (3 crs.)	Library Science 477—(4 crs.)
Biol. 347—Ornithology (3 crs.)	Math. 121—Cultural (4 crs.)
Bus. Educ. 423—Salesmanship (2 crs.)	Music 340—Choral Conducting (3 crs.)
Educ. 250—Teaching Reading (4 crs.)	Phy. Educ. 131—Stunts (1 cr.)
Educ. 345—Diagnostic and Evalu. Proced. (4 crs.)	Phy. Educ. 132—Games (1 cr.)
Educ. 359—Recent Trends in Arithmetic (4 crs.)	Phy. Educ. 210—Elementary Technic (1 cr.)
Educ. 421—Anal. and Correct. Rdg. Disab. (4 crs.)	Phy. Educ. 230—Tennis (1 cr.)
Educ. 459—Philosophy (4 crs.)	Phy. Educ. 238—Archery (1 cr.)
Eng. 131—Communications (4 crs.)	Psych. 262—Human Growth and Development (4 crs.)
Eng. 371—The Romantics (4 crs.)	Soc. 260s—Introduction (4 crs.)
Geog. 171—Regional (4 crs.)	Soc. Sci. 102—Political Science (3 crs.)
Health Educ. 115—Personal Hygiene (2 crs.)	Speech 381—Speech Pathology (3 crs.)

SECOND PERIOD—9:00 A. M.—10:20 A. M.

Art 336—Clay Work (3 crs.)	Math. 220—College Algebra (4 crs.)
Aviation (3-4 crs.)	Math. 351—Tchg. Elementary (2 crs.)
Bus. Educ. 202—Typing (2 crs.) (M-F)	Mus. 250s—Teaching Elementary School (4 crs.)
Bus. Educ. 316—Communications (4 crs.)	Mus. 320s—History and Appreciation (4 crs.)
Econ. 473—Labor Problems (4 crs.)	Phy. Educ. 123—Curriculum (1 cr.)
Educ. 346—Directed Observation (4 crs.)	Phy. Educ. 132—Games (1 cr.)
Educ. 366—Curriculum (3 crs.)	Phy. Educ. 133—Folk Dance (1 cr.)
Educ. 423—Practice Anal. Rdg. Disab. (4 crs.)	Phy. Educ. 138—Swimming (1 cr.)
Eng. 133—Communications (4 crs.)	Phy. Educ. 230—Tennis (1 cr.)
Eng. 151—Children's Literature (4 crs.)	Phy. Educ. 238—Archery (1 cr.)
Eng. 352—Tchg. Language Arts High School (4 crs.)	Phy. Educ. 253—Coaching (2 crs.) (M.)
Eng. 442—Shakespeare (3 crs.)	Pol. Sci. 281—American Government (4 crs.)
French Conferences (4 crs.)	Psych. 464—Prin. and Proc. in Guid. I (3 crs.)
Geog. 386—Political (2 crs.)	Science 101—Laboratory (M-W-F)
Hist. 346—Minnesota (3 crs.)	Soc. Sci. 103—Intro. Sociology (3 crs.)
Hist. 435—Far East (3 crs.)	Soc. Studies 351—Teaching Elementary (2 crs.)
Human. 123—Intro. Music (3 crs.)	Speech 241-2—Recreational Dramatics (3-4 crs.)
Ind. Arts 205—Basic Crafts (3 crs.)	Speech 280—Phonetics (3 crs.)
Library Science 478—(2 crs.)	

THIRD PERIOD—10:30 A. M.—11:50 A. M.

Art 239—Weaving (2 crs.)	Math. 454—Field Work (3 crs.)
Bus. Educ. 311—Accounting (4 crs.)	Music 211s—Fundamentals of Reading (4 crs.)
Bus. Educ. 451—Methods (2 crs.)	Music 251—Teaching Elementary (4 crs.)
Bus. Educ. 452—Methods (2 crs.)	Music 450—Voice Ensemble (2 crs.)
Educ. 256s—Rural Methods and Management (4 crs.)	Phy. Educ. 129—Swimming (1 cr.) (M.)
Educ. 356—Activity Units-Elementary (4 crs.)	Phy. Educ. 132—Games (1 cr.)
Educ. 357—Guidance Learning Activities (4 crs.)	Phy. Educ. 230—Tennis (1 cr.)
Educ. 416—Teaching Reading Elementary (4 crs.)	Phy. Educ. 218—Recreation (1 cr.)
Educ. 472—School Organ. and Admin. (4 crs.)	Phy. Educ. 255—Coaching (2 crs.) (M.)
Eng. 132—Communications (4 crs.)	Pol. Sci. 482—International Organ. (3 crs.)
Eng. 235—World Literature (3 crs.)	Psych. 263s—Guidance of Learning Activities (4 crs.)
Geog. 388—Australia and New Zealand (2 crs.)	Science 101—Life and Environment (4 crs.)
Health Educ. 338—Meth. and Materials (4 crs.)	Science 102—Use of Materials (2 crs.) (M-F)
Hum. 121—Introduction to Art (3 crs.)	Soc. Sci. 101—Intro. Econ. (3 crs.)
Hum. 122—Introduction to Literature (3 crs.)	Soc. 367—Cultural Anthropology (4 crs.)
Ind. Arts 321—Elementary School (4 crs.)	Spanish Conference (4 crs.)
Library Science 479—(2 crs.)	Speech 230—Oral Interpretation (3 crs.)
Math. 221—College Algebra (4 crs.)	Speech 481—Clinic (2-4 crs. arr.)
Math. 325—College Geometry (4 crs.)	

FOURTH PERIOD—1:10 P. M.—2:30 P. M.

Biol. 344—General Bacteriology (4 crs.)	Bus. Educ. 206—Typing and Skills (2 crs.) (M-F)
Bus. Educ. 201—Typing (2 crs.)	Bus. Educ. 300s-301—Law (4 crs.)
Bus. Educ. 205—Typing (0 crs.) (M-F)	Educ. 216—Audio-Visual Recreation (1 cr.) (M-W)

of Classes



Educ. 352—Kindergarten (4 crs.)
 Educ. 476—Super. and Improv. Instr. (4 crs.)
 Eng. 132—Communications (4 crs.)
 Eng. 151—Children's Literature (4 crs.)
 Eng. 446—Seminar (2 crs.)
 Hist. 141—20th Century (4 crs.)
 Hist. 331—Ancient World (4 crs.)
 Phy. Educ. 136—Swimming (1 cr.)

Phy. Ed. 322—Team Sports in Rec. (1 cr.) (T.Th.)
 Phy. Ed. 330—Golf (1 cr.)
 Science 101—Life and Environment (4 crs.)
 Science 314—Nature Study and Camping (3 crs.)
 Sci. Educ. 324—Experiences in Elem. Sch. (4 crs.)
 Soc. Studies 353—Teaching Secondary (2 crs.)
 Speech 240—Dramatics in Recreation (2 crs.)

FIFTH PERIOD—2:40 P. M.—4:00 P. M.

Biol. 314—Nature Study and Camping (3 crs.)

Theatre Workshop

TENTATIVE SCHEDULE—SECOND SESSION

FIRST PERIOD—7:30 A. M.—8:50 A. M.

Art. 152—Principles (3 crs.)
 Bus. Educ. 312—Accounting (4 crs.)
 Bus. Educ. 413—Office Management (4 crs.)
 Educ. 476—Super. and Impr. Instruction (4 crs.)
 Eng. 357—Teaching Elementary (2 crs.)
 Geog. 171—Regional (4 crs.)
 Hist. 315—Early Modern (3 crs.)
 Hum. 122—Intro. Literature (3 crs.)
 Hum. 123—Intro. Music (3 crs.)
 Ind. Arts. 343—Ceramics (2 crs.)

Phy. Educ. 131—Stunts (1 cr.)
 Phy. Educ. 133—Folk Dancing (1 cr.)
 Phy. Educ. 230—Tennis (1 cr.)
 Phy. Educ. 251—Coaching (2 crs.) (M.)
 Phy. Educ. 351—School Programs (4 crs.)
 Pol. Sci. 387—Municipal Government (3 crs.)
 Psych. 262—Human Growth and Development (4 crs.)
 Psych. 471—Person. Adjustment (2 crs.)
 Sci. 101—Life and Environment (4 crs.)
 Speech 321—Conducting a Meeting (1 cr.)

SECOND PERIOD—9:00 A. M.—10:20 A. M.

Bus. Educ. 201—Typing (2 crs.) (M.F.)
 Bus. Educ. 205—Typing (0 crs.) (M.F.)
 Bus. Educ. 401—Office Prac. and Mach. (4 crs.)
 Educ. 201—Amer. School System (2 crs.)
 Educ. 357s—Guid. of Learning Activities (4 crs.)
 Educ. 368—Visual Aids (4 crs.)
 Eng. 133—Communications (4 crs.)
 Eng. 151—Children's Literature (4 crs.)
 Eng. 347—Contemporary Literature (2 crs.)
 Geog. 372—Conser. Wild. Resources (3 crs.)
 Hist. 141—Amer. 20th Century (4 crs.)
 Hist. 346—Minnesota (3 crs.)
 Hum. 121—Introduction to Art (3 crs.)
 Ind. Arts 321—Elementary School (4 crs.)
 Math. 121—Cultural (4 crs.)

Mus. 211s—Funda. of Reading Music (4 crs.)
 Mus. 250s—Teaching Elementary (4 crs.)
 Phy. Educ. 127—Individual Athletics (1 cr.) (M.)
 Phy. Educ. 204—First Aid (2 crs.)
 Phy. Educ. 230—Tennis (1 cr.)
 Phy. Educ. 233—Rhythm. Fundamentals (1 cr.)
 Phy. Educ. 238—Archery (1 cr.)
 Phy. Educ. 348—Anatomy and Physiol. (4 crs.)
 Psych. 121—General (4 crs.)
 Psych. 486—Psychometric Technique (3 crs.)
 Science 451—Teaching Elementary (3 crs.)
 Soc. Sci. 103—Intro. Sociology (3 crs.)
 Speech 320—Advanced Public Speaking (4 crs.)
 Speech 447—History of Theatre (2 crs.)

THIRD PERIOD—10:30 A. M.—11:50 A. M.

Art 236—Crafts (2 crs.)
 Bus. Educ. 302—Business Law (4 crs.)
 Bus. Educ. 400—Arranged
 Bus. Educ. 401—Laboratory
 Educ. 250—Teaching Reading (4 crs.)
 Educ. 474—Educ. Administration (4 crs.)
 Eng. 132—Communications (4 crs.)
 Geog. 271—Economic
 Health Educ. 115—Personal Hygiene (2 crs.)
 Hist. 239—American Colonial (4 crs.)
 Hist. 434—History of Russia (4 crs.)
 Ind. Arts 210—Constr. and Upholstery (2 crs.)

Math. 330—Elem. Statistics (4 crs.)
 Phy. Educ. 132—Games (1 cr.)
 Phy. Educ. 235—Square Dancing (1 cr.)
 Phy. Educ. 324—Adult Recreation (1 cr.)
 Phy. Educ. 330—Golf (1 cr.)
 Pol. Sci. 382—State Government (3 crs.)
 Psych. 263s—Guidance of Learning Activities (4 crs.)
 Psych. 341.3—Child and Adolescence (4 crs.)
 Sci. 103—Use of Energy (3 crs.)
 Sci. 104—Human Development and Prob. (3 crs.)
 Sci. 324—Elementary School Experience (4 crs.)
 Speech 326—Argumentation (4 crs.)

FOURTH PERIOD—1:10 P. M.—2:30 P. M.

Biol. 349—Conservation Prob. (3 crs.)
 Bus. Educ. 206—Typing (2 crs.) (M.F.)

Speech 440—Adv. Play Production (2 crs.)
 Theatre Work Shop

