

St. Cloud State University

The Repository at St. Cloud State

Gerontology Newsletter

Program in Gerontology

Spring 1991

Gerontology Times [Spring 1991]

St. Cloud State University

Follow this and additional works at: https://repository.stcloudstate.edu/gero_newsletter

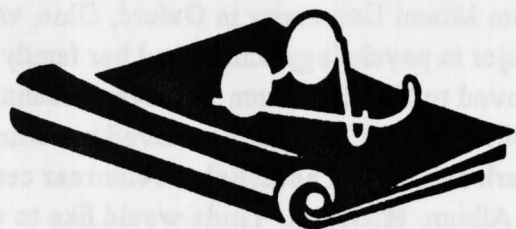
Recommended Citation

St. Cloud State University, "Gerontology Times [Spring 1991]" (1991). *Gerontology Newsletter*. 40.
https://repository.stcloudstate.edu/gero_newsletter/40

This Newsletter is brought to you for free and open access by the Program in Gerontology at The Repository at St. Cloud State. It has been accepted for inclusion in Gerontology Newsletter by an authorized administrator of The Repository at St. Cloud State. For more information, please contact tdsteman@stcloudstate.edu.

GERONTOLOGY NEWSLETTER

ST.CLOUD STATE UNIVERSITY



SPRING 1991

VOLUME 6, NUMBER 3

FROM THE DIRECTOR'S DESK

---Dena Shenk

This is our final issue of the 1990-91 academic year and brings an important announcement. After twelve years here at St. Cloud State University, I have requested a two-year leave beginning next fall. I have accepted a position as Coordinator of the Gerontology Program at the University of North Carolina at Charlotte and plan to move to North Carolina this July.

I had hoped to be able to announce our final plans for the Gerontology Program for next year at this time, but those plans are not yet firm. Please keep in touch with us during the spring and summer as decisions are made.

I certainly did not make my decision lightly and it is difficult to think of leaving my friends, students and colleagues here in St. Cloud and Minnesota. I had been planning to share in this column, an experience I had at a recent conference. I realized how many of the local service providers were past students of our program. I won't list you all here, but want you each to know you will be thought of fondly. I'll look forward to hearing from you at UNCC, Dept. of Sociology, Anthro, & SW, Charlotte, NC 28223. I wish you all the best for the summer and the coming year.

GERONTOLOGY CLUB

The Gerontology Club will be recruiting new members for Fall 1991. Participation in the club can help increase your involvement in aging related areas by educating the campus and the community. The club helps you develop networking skills through volunteering and working with aging related services in the community. Through planned social activities you get to know other gerontology students and faculty.

Tammy Kwiatkowski, outgoing president, writes concerning her involvement in the Gero Club. "The club has put me in contact with people in the community, which has helped me now in my internship at the Monticello Senior Center. It has given me a sense of personal satisfaction in the giving of my time and effort. It's helped me to develop my leadership and organizational skills and will be a positive addition to my resume. It's been a source of support and place where I could share the trials and joys of being in this field. I urge your participation."

In this Issue

Course Offerings	2, 4, 8
Graduate Page	2, 3
Student Spotlights	2, 4, 5
Undergraduate Page	4
Alumni Notes	5
Faculty Notes	7
Meetings and Conferences	8

GRADUATE PAGE

FROM THE GRADUATE COORDINATOR'S DESK

---Dene Shenk

This has been a very good year for the graduate program. Jennifer Crotteau is presently completing a final draft of her thesis. She will be the first student to graduate with a Master's degree in Gerontology from St. Cloud State! We are all ready to celebrate her achievement.

The Gerontology Graduate Committee has been working on policy and guidelines that are presently being finalized. According to these new guidelines, a student will be required to complete a minimum number of graduate courses in a two-year period in order to remain actively enrolled in the program. A mailing will be sent to all of the students currently enrolled in the Master's Program when these guidelines are finalized.

In addition, we are currently working on developing a non-thesis option within the Master's Program in Gerontology. These changes will have to be processed through the curriculum process and we hope they will be implemented by next winter quarter. An update will be provided in the Fall newsletter.

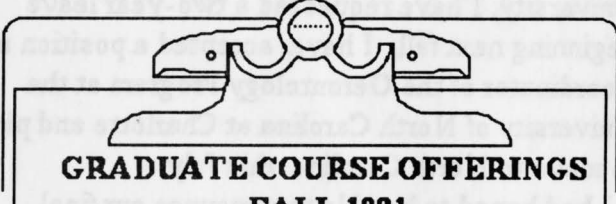
Finally, in regard to my departure from St. Cloud, I want you all to know how much I have enjoyed working with you! Each of the graduate students should be sure to contact me this spring and make plans for continuing and completing your graduate program. I look forward to seeing each of you before I go and sincerely hope you will keep in touch.

GRADUATE SPOTLIGHT



Linda Shelles is a first-year graduate student in the Gerontology program and is currently enrolled in her fourth

graduate course. Her undergraduate degree is from Miami University in Oxford, Ohio, with a major in psychology. Linda and her family moved to St. Cloud from Michigan in January of 1989. She has long been involved in volunteer work and helped establish a volunteer center in Albion, Michigan. Linda would like to work in the travel industry, planning, coordinating and escorting tours for seniors. In preparation for her career, Linda enrolled in the Carlson Travel Academy Career Development class last fall. She hopes that her Gero coursework will provide her with a better understanding of the needs and interests of the aging population. Linda enjoys music, likes to sew, cook and do handwork in her "spare time," --whatever that is!



GRADUATE COURSE OFFERINGS FALL 1991

(Advanced Registration - May 15th & 16th)

CORE:

*APSY 678 Statistics (3cr) M 18:00-20:30
Murphy

ELECTIVES:

*GERO 511 Aging Policy & Program (4 cr)
MW 13:00-14:50 Stokes
*GERO 540 Strategies for Aging Health Care
(4 cr) W 17:30-20:50 Stone
*GERO 560 Adult Journey (4 cr) T
18:00-21 20 Stokes

**NOTE: GERO 620 will be offered
Spring 1992. GERO 650 will not be
offered Spring 1992.**

GOOD NEWS

Nancy June Johnston, Gerontology Program Graduate Assistant, has accepted the position of Director of the Poppele Program in Health and Welfare Ministries at the St. Paul School of Theology, Kansas City, Missouri. She will be teaching gerontology and integrating gerontological concerns with other seminary courses.

CONGRATULATIONS, NANCY

GRADUATE INTERNSHIPS

Catherine Norman has been interning (winter & spring) with the county aging office in Boone, North Carolina. **Nancy June Johnston** and **Micki Blenkush** are both interning in St. Cloud. Nancy is serving as consultant for an evaluation project for the Whitney Senior Center. Micki is working with Senior Helping Hands, part of the chemical dependency program at the St. Cloud Hospital. **Mike Burzette** completed his internship during the winter at the Central Minnesota Council on Aging working on the Senior Center Leadership /Service Development Project.

Notice: Graduate students from the Twin Cities metropolitan area:

The Gerontology program office has recently compiled a list of currently active graduate students who are living in the Twin Cities-Metro area to help with ride-sharing, as well as some basic support and networking. If you are interested in taking classes in the gerontology program and/or would like to be added to the list please let the office know

SCSU STUDENTS RECOGNIZED

Several Gero students and alumni were recently highlighted in the Minnesota Gerontologist newsletter. As a new member of MGS, Master's student **Barbara Kuhnman** was featured in the "Who's New" section of the newsletter. In addition, **Marge Agnew**, **Nancy June Johnston**, and **Betty Moffit** were included in the Year-End Committee Report for Greater MN. These three individuals served as committee members for central MN representing the needs and interests of MGS members and helped in planning MGS events in Greater MN.

MGS CALL FOR STUDENT PAPERS

The Minnesota Gerontological Society (MGS) has announced a call for Student Papers for the second annual Student Paper Competition to be awarded at the Fall 1992 meeting of MGS. The competition is open to both graduate and undergraduate students who have written a paper while enrolled in a Minnesota post-secondary institution. Deadline for submission of papers is August 1, 1991.

Papers should not exceed 20 double-spaced pages excluding appendices and references. Papers must be of gerontological interest whether they be empirical, theoretical, or a critical review of a body of literature.

Criteria for assessment will be originality, quality of writing, quality of analytic techniques, and contributions to the gerontological field. Graduate and undergraduate papers will be judged separately.

Two awards (graduate and undergraduate categories) of \$75 and a year's student membership to MGS will be presented at the Fall 1992 MGS Conference held in the Twin Cities.

For more information contact the Gerontology program office, or write to MGS, Student Paper Competition, 219 Pioneer Building, St. Paul, MN 55101.

UNDERGRADUATE PAGE

FROM THE UNDERGRADUATE COORDINATOR'S DESK

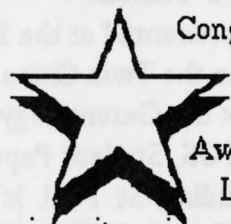
Elanore Stokes

Spring fever, anyone? Longer days, more sunlight, more time outdoors,---and a new flurry of interest in making curriculum decisions. Certainly the level of interest in gerontology as a minor continues to be high.

The Office of Records tells us that as of the 10th day of Spring quarter there are 19 declared gerontology minors, while an additional 13 students have indicated their intention to enroll in the program. Welcome to our program! There are a wide range of workplace situations in which knowledge of the interests, needs and potential of the older adult population can be applied. The gerontology internship program helps to open the door to these career paths by providing professional level experience with organizations whose consumers include older persons. It is interesting to note that students are becoming increasingly aware of the potential for careers in the private sector - an arena which has recently "discovered" the older consumer.

Forthcoming: Three of our gerontology students are in the final editing phase of a directory of professional careers in gerontology in central Minnesota. The directory will be available in the Gerontology Resource Room, 330 Stewart Hall, by mid-May. **Congratulations** to Louise Reis on receiving the Excellence in Leadership Award. Further details of this accomplishment follow

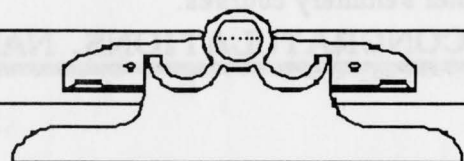
UNDERGRADUATE SPOTLIGHT



Congratulations to **Louise Reis**, recipient of the prestigious St. Cloud State University Award for Excellence in

Leadership. This is a unique university-wide program which identifies and honors students who have made a difference in

the quality of university and community life. These students have excelled in the areas of leadership, creativity and social responsibility on campus and/or in the community. Louise will be honored and presented with a medallion at the Awards Banquet on April 28, 1991 in the Atwood Center Ballroom. Congratulations once more, Louise. We wish you great success in your professional life after your spring graduation.



UNDERGRADUATE COURSE OFFERINGS FALL 1991

(Advanced Registration May 15th and 16th)

CORE:

- *SSCI 208 Intro to Gero (4cr) TR 11:00-12:50 Stone
- *SOC 350 Sociology of Age and Aging (4cr) TR 13:00-14:50 Havir
- *PSY 345 Aging, Dying, & Death (4cr.) T 18:00-20:30 Staff
- *GERO 411 Aging Policy & Programs (4cr) MW 13:00-14:50 Stokes

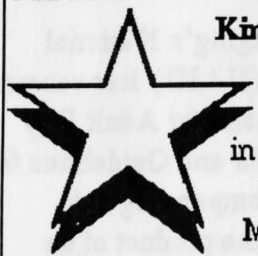
ELECTIVES:

- *GERO 440 Strategies for Aging Health Care (4cr) W 17:30-20:50 Stone
- *BIO 307 Medical Terminology (2cr) TW 14:00-15:00 Peterson
- *SSCI 460 Adult Journey (4 cr) T 18:00-21 20 Stokes

THE GAME OF AGING

The Game of Aging Concerns, a board game dealing with management & the aging resident has arrived in the Gerontology Resource Room. Players respond to concerns of relationships, crisis & conflict issues, daily challenges related to involvement in working with older adults as individuals, their families and in the community

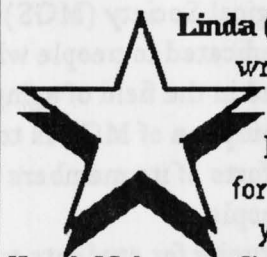
ALUMNI SPOTLIGHTS



Kim Flom, recent graduate of the gerontology program, joined the staff of St. Mary's Home in the Highland Park area of St. Paul on February 18th. St. Mary's is a skilled nursing

facility and Kim is in charge of 60 residents primarily coordinating care conferences -- interdisciplinary meetings with people from each department, the families and residents. She will become more involved with admissions and discharge planning.

Kim has also passed her social work licensure exam and is becoming a member of the Minnesota Nursing Home Social Worker's Association. She has been getting acquainted with the city, and renewing her interest in running and weight lifting. She looks forward to hearing news from other gerontology alumni.



Linda (Hashbrouck) Michaels

writes that she has been working at the Minnesota Masonic Home Care Center for the past two and one-half years. Linda, who began as a

Youth Volunteer Coordinator, has recently started a new position as a social worker for the Skilled Nursing Facility

The Minnesota Masonic Home Care Center is in the process of building cluster homes designed for the more independent older person. In 2-3 years they will be building another skilled nursing facility with 120 beds and changing some of the current Board and Care beds into Assisted Living. Linda writes: If people are looking for jobs in the future, this may be a good place to look since we will be needing to add more positions as the facility grows

ALUMNI NOTES

Marilyn Obermiller, 1986 program graduate, received the JCPenney Golden Rule Award for her volunteer service to the St. Cloud Hospital and the St. Cloud community

Shari Czech Grebinoski, St. Cloud Nutrition Centers Program Assistant Director and graduate of our Gerontology program, gave birth to a son, Jonathan Ross, on December 26th, 1990.

Shari will return to her position at the Nutrition Program in late April. Congratulations, Shari!

Gwen Larson graduated, summa cum laude, winter quarter with a minor in Gerontology and moved to Milwaukee, Wisconsin March 1. Good luck--keep us posted on your life and career, Gwen.

GERONTOLOGY CERTIFICATES AVAILABLE

Gerontology program graduates are entitled to receive a personalized, suitable-for-framing program completion certificate. Contact the gerontology program office at our newsletter return address. Enclose three dollars, your name as you'd like it printed on the certificate and your return address. Make checks payable to SCSU

GENERATIONS UNITED

Generations United (GU), a national Coalition on Intergenerational Issues and programs, has received a grant from the Administration on Aging to conduct an "Intergenerational Child Care Awareness and Dissemination Campaign." The campaign will enable Generations United to identify, select, and disseminate information about intergenerational child care programs.

Generations United: A National Coalition of Intergenerational Issues and Programs is co-chaired by the National Council on Aging (NCOA) and the Child Welfare League of America (CWLA).

THANK YOU, MARY

Psychology professor, Mary Dwyer will retire from the Psychology Department at the end of the Spring Quarter. Sincerest gratitude is extended to Mary for her contributions to the success of our Gerontology Program. Best wishes for a fruitful and happy retirement.

SENIOR CENTER STANDARDS AND ASSESSMENT

The National Council on the Aging, Inc., (NCOA) and its National Institute of Senior Centers (NISC) have released a new edition of Senior Center Standards and Self Assessment Workbook. This new publication is described by NISC as "a living document that continues to evolve in response to a changing environment and the changing needs of older adults."

The Senior Center Standards and Self-Assessment Workbook. Guidelines for Practice may be ordered (\$20 for NCOA members and \$25 for non-members) from NCOA Publications, Department 5087, Washington DC 20061-5087

(Whitney Senior Center in St. Cloud is currently utilizing this publication. Graduate student, **Nancy June Johnston**, is facilitating the assessment as part of her internship work.)

AGHE GRANT

The Association for Gerontology in Higher Education (AGHE) has received a grant from the Administration on Aging making it possible for AGHE to address the lack of appropriate match between jobs in the field of aging and the personnel who are seeking these positions. The project began October 1990 and is expected to be completed in twenty-three months. For more information contact: Joy Lobenstine, AGHE, 600 Maryland Avenue, S.W. West Wing 204, Washington, D.C. 20024, 202-484-7505.

ADULT DAYCARE

The National Council on Aging's National Institute on Adult Daycare (NAID) has recently released new recommendations for Adult Day Care Centers. The Standards and Guidelines for Adult Day Care, and its accompanying self-assessment workbook, are the product of an 18-month NIAD effort. The 182 recommendations for Adult Day Care Centers are expected to influence government regulations.

Standards and Guidelines for Adult Day Care and A Self-Assessment Workbook are available to NCOA members at \$25 and to nonmembers at \$31.25. Postage and handling, 10 percent (\$2.00 minimum). Orders with checks or purchase orders payable to NCOA may be sent to NCOA Publications, Dept. 5087, Washington, DC 20061-5087

JOIN THE MINNESOTA GERONTOLOGICAL SOCIETY

The Minnesota Gerontological Society (MGS) is a statewide organization dedicated to people who work, study, or are interested in the field of aging from many disciplines. The purpose of MGS is to support and facilitate the efforts of its members to enhance the lives of older people.

MGS is an excellent opportunity for students to network with others who share a professional and personal interest in gerontology. All gerontology students are invited to become members. Membership application forms are available in the Gerontology Resource Room. Ask one of the faculty members to sign your form for you.

Regular membership cost is \$35.00, student and retired persons \$15.00. For further information contact the Minnesota Gerontological Society, 219 Pioneer Building, St. Paul, MN 55101 (612-222-8233).

FACULTY NOTES

Mary Dwyer will retire from the Psychology Department at the end of the Spring Quarter. She will spend winters in Florida teaching & working in the field of Gerontology. Her post-doctoral studies (in gerontology) were conducted at the University of Florida, Gainesville, and she is very impressed with the facilities in that area and is looking forward to the new challenge. "I commend the SCSU Gerontology Program for the great progress it has made under Dena's leadership. Keep up the great leadership in the field!"

Linda Havir is beginning a new research project involving non-traditional students. Over the next several weeks she'll interview 20 to 30 people who graduated from SCSU between 1985 and 1987 regarding their employment experiences following graduation. One of her interests is seeing whether or not age has positive or negative affect on their employment possibilities. Havir and Donna Walberg (CMCoA) wrote an article together discussing the collaboration process and issues involved when an academic works with a planner on applied research. This article has been submitted for publication in the Journal of Sociological Practice in a special gero issue.

Dena Shenk is presently completing the manuscript for a special issue of the Journal of Aging Studies on "Serving the Rural Elderly" which will appear as the Winter 1992 issue. As editor of the issue, Shenk is preparing an introductory article and both she and **Linda Havir** have articles in the issue. An earlier version of the articles were presented at a full-day session at the annual meetings of GSA last November in Boston. Dena participated in the mid-year meeting of GSA in March as a member of the Humanities and Arts Committee. Dena was one of the

co-organizers and presentors at the Academic Forum held in conjunction with the MGS Spring Conference. The Academic Forum is an annual meeting of the gerontology educators in higher education in Minnesota. This Forum focused on using the AGHE Standards and Guidelines for coordinating gerontology education at community colleges and universities in the state.

Al Stensland, in his capacity as president of the Minnesota Funeral and Memorial Society, has been involved in coordination and planning of a series of four free workshops for those concerned about estate planning, changing medical ethics, the economics of funerals, and services for the elderly held May 4 in Minneapolis. The Society is an 82,000

member senior citizen consumer organization that helps people arrange lower funeral prices. **Eleanore Stokes** is to be inducted into the St. Cloud State University Chapter of The [National] Honor Society of Phi Kappa Phi.

She recently joined the International Research Forum, a group of SCSU faculty dedicated to supporting research in the international arena. Eleanore has also been conducting a study at St. Benedict's Center on the duties of certified nursing assistants. This study is a continuation of research she conducted in Connecticut. A new phase of the study will entail interviewing a sample of St. Benedict's Center residents to learn about availability of health care services in the first half of this century.

Michelle Stone & Mary Boltuck will present papers at the "Health Care Delivery Systems for Older Adults" session of the International SYSTED meetings in Spain this summer. Michelle has also been appointed to the Board of the Association for Humanist Sociology.



For Your Information

**4TH INTERNATIONAL CONFERENCE
SYSTEMS 91 ON SYSTEMS SCIENCE IN
HEALTH-SOCIAL SERVICES FOR THE
ELDERLY AND THE DISABLED** Barcelona,
Spain. 343-301-2577 or Fax: 343-301-6332. June
10-14, 1991.

**DEVELOPING LEADERSHIP IN
GERIATRIC EDUCATION.** Sponsored by
OVAR Geriatric Education Center &
Sanders-Brown Center on Aging Summer Series
on Aging. July 8-11, 1991 Lexington, KY.
800-432-0963 ext. 3-6459.

**XVTH INTERNATIONAL CONGRESS OF
GERONTOLOGY.** Sponsored by the WORLD
CONGRESS OF GERONTOLOGY. Budapest,
Hungary July 4-9, 1993.

**REACHING OUT TO THE SENIOR
MARKET: A Tourism & Hospitality Industry
Perspective.** Oct. 31-Nov 1, Niagara Falls, NY,
Jan van Harssel 716 285 1212.

COURSE OFFERINGS SUMMER 1991

FIRST SESSION - JUNE 12-JULY 14

- *BIO 412/512 Bio of Aging (4cr/3cr.) MTWR
9:35-11:30 McCue
- *REC 339 Therapeutic Rec (4cr.) MTWR
10:00-11:00 Sheehan
- *HURL 409/509 Ageism (4cr) MTWR 11 40-1 35
Norman
- *APSY 678 Statistics (3cr) MTWR 11 40-1-00
Murphy
- *ED 615 Seminar: Intro to Ed Admin. WR
11 40-2:20 Schmidt

SECOND SESSION - JULY 15-AUGUST 16

- *SSCI 204 Death & Dying (4cr.) MTWR
9:35-11:30 Stensland
- *REC 339 Therapeutic Rec (4cr.) MTWR
10:00-11:00 Sheehan
- *APSY 678 Statistics (3cr.) MTWR 11 40-1:00
Murphy

**Gerontology Program
Dept. of Interdisciplinary Studies
365 Stewart Hall
St. Cloud State University
720 4th Avenue South
St. Cloud, MN 56301-4498**

**ADDRESS CORRECTION
REQUESTED**

TO:

**Non-Profit Org.
U. S. Postage
PAID
St. Cloud, Minn.
Permit No. 460**