

St. Cloud State University

## theRepository at St. Cloud State

---

Undergraduate and General

Course Catalogs

---

1925

### Undergraduate Course Catalog [1925/26]

St. Cloud State University

Follow this and additional works at: <https://repository.stcloudstate.edu/undergencat>

---

#### Recommended Citation

St. Cloud State University, "Undergraduate Course Catalog [1925/26]" (1925). *Undergraduate and General*. 53.

<https://repository.stcloudstate.edu/undergencat/53>

This Book is brought to you for free and open access by the Course Catalogs at theRepository at St. Cloud State. It has been accepted for inclusion in Undergraduate and General by an authorized administrator of theRepository at St. Cloud State. For more information, please contact [tdsteman@stcloudstate.edu](mailto:tdsteman@stcloudstate.edu).

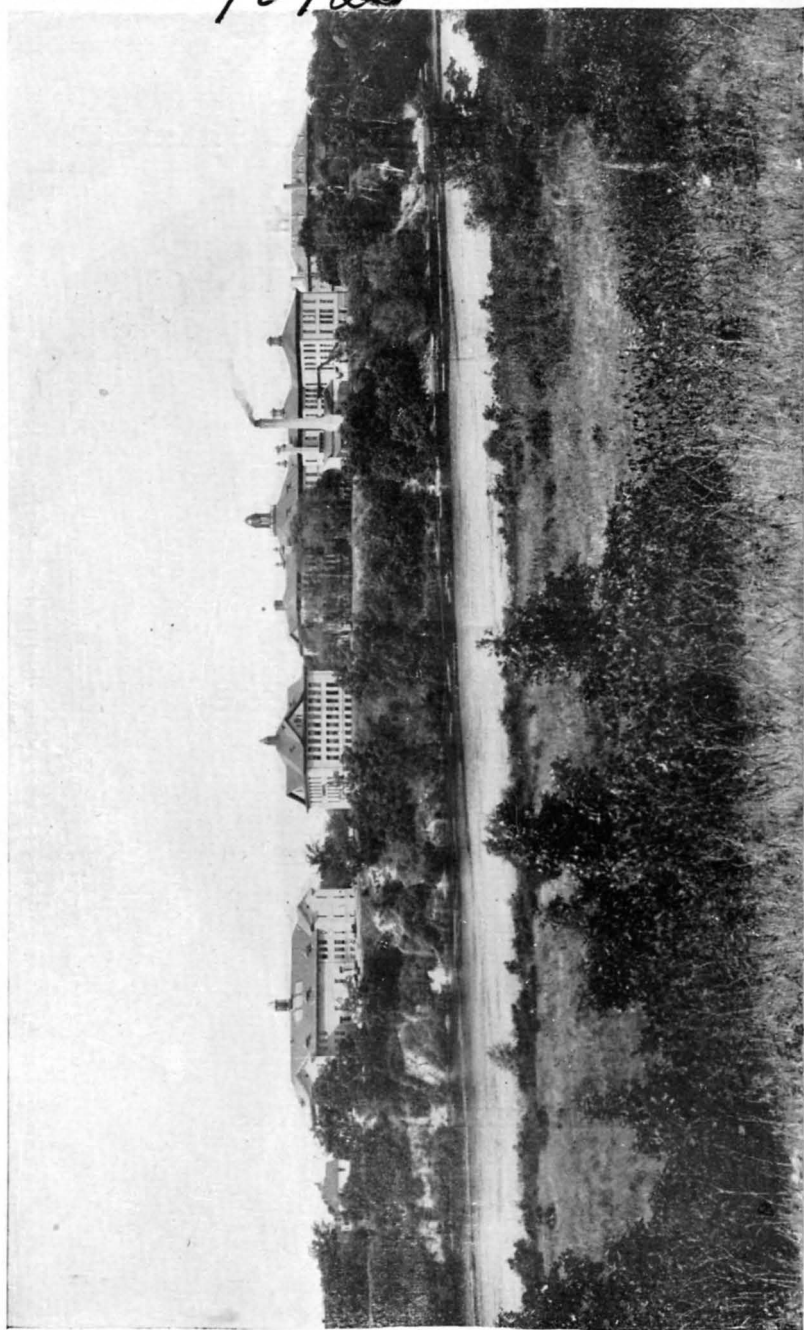
# **State Teachers College**

**St. Cloud, Minnesota**

## **Fifty-seventh Annual Catalogue**

**Announcements  
for  
1925-1926**

70725



Arch

LD

4797

SL

M5+

1925-29

7-  
3/18/27

5-20

1925-29

25501

No conqueror can make the multitude different from what it is; no statesman can carry the world's affairs beyond the ideas and capacities of the generation of adults with which he deals; but teachers—I use the word in the wisest sense—can do more than either conqueror or statesman; they can create a new vision and liberate the latent powers of our kind.

H. G. WELLS.

## The Teachers Creed

I believe in boys and girls, the men and women of a great tomorrow; that whatsoever the boy soweth the man shall reap. I believe in the curse of ignorance, the efficiency of schools, in the dignity of teaching, and in the joy of serving others. I believe in wisdom as revealed in human lives as well as in the pages of a printed book, in lessons taught, not so much by precept as by example, in ability to work with the hands as well as to think with the head, in everything that makes life large and lovely. I believe in beauty in the school room, in the home, in daily life, and out-of-doors. I believe in laughter, in love, in faith, in all ideals and hopes that lure us on. I believe that every hour of every day we receive a just reward for all we do. I believe in the present and its opportunities, in the future and its promises, and in the divine joy of living.

EDWIN OSGOOD GROVER



# Minnesota State Teachers College Board

ORREN E. SAFFORD                      -                      -                      -                      -                      -                      Minneapolis

## Calendar for 1925-1926

### Summer Session

Registration.....	Wednesday, June 10, 1925
Class work begins.....	Thursday, June 11, 1925
Session ends.....	Wednesday, July 22, 1925

### Fall Quarter

Registration.....	Tuesday, September 8, 1925
Class work begins.....	Wednesday, September 9, 1925
Quarter ends.....	Wednesday, November 25, 1925

### Winter Quarter

Class work begins.....	Tuesday, December 1, 1925
Christmas vacation begins.....	Friday, December 18, 1925
Class work resumed.....	Tuesday, January 5, 1926
Quarter ends.....	Friday, March 5, 1926

### Spring Quarter

Class work begins.....	Monday, March 8, 1926
Easter vacation begins.....	Friday, March 26, 1926
Class work resumed.....	Tuesday, April 6, 1926
Commencement.....	Thursday, June 3, 1926

# Faculty

- JOSEPH CLIFTON BROWN**.....President  
 Training: A. B., Hanover College; A. M., Teachers College, Columbia University; Graduate Student, University of Chicago and Columbia.  
 Experience: Teacher in high schools and superintendent of Schools, Indiana; Mathematics Department, Eastern Illinois State Normal School, Charleston; Supervisor of Mathematics, Horace Mann Schools, New York City; Teacher of Mathematics, Summer School, Teachers College, Columbia University; Director of Training School for Teachers, University of Illinois; State Teachers College, St. Cloud, 1916—
- JOHN E. TALBOT**.....Director of Training Department  
 Training: A. B., Nebraska Wesleyan University; A. M., Teachers College, Columbia University; Graduate Student, University of Nebraska, University of Chicago, and Columbia University.  
 Experience: Teacher in rural schools, grades, and high schools, and superintendent of schools Nebraska; Assistant Superintendent of United States Government Schools, Canal Zone, Panama; Director of Training Department, State Normal College, Bowling Green, Ohio; State Teachers College, St. Cloud, 1921—
- ELSPA M. DOPP**.....Literature  
 Training: Normal School, Oshkosh, Wis.; M. L., University of Mich.; Graduate Student, University of Chicago.  
 Experience: Rural Schools of Wisconsin; Teacher in High School, New Lisbon, Prairie du Chien, and Manitowoc, Wis., State Teachers College, St. Cloud, 1896—
- BEULAH DOUGLAS**.....Supervisor in Training School  
 Training: Graduate, Milwaukee Kindergarten Training School; Student, University of Minn.; University of Chicago; Teachers College, Columbia University.  
 Experience: Kindergarten Director, Milwaukee; Primary Teacher, Minneapolis; Principal of Milwaukee Vacation School; Instructor, summer session, University of Minn.; State Teachers College, St. Cloud, 1902—
- GEORGE H. LYNCH**.....Physical Education  
 Training: Graduate, State Teachers College, St. Cloud; Student, Harvard Summer Schools.  
 Experience: State Teachers College, St. Cloud, 1903—
- PAPE L. QUAYLE**.....Psychology  
 Training: A. B., University of California; Graduate Student, University of Chicago.  
 Experience: Grade Teacher, Moberly, Mo.; Department of English, State Normal School, Warrensburg, Mo.; State Teachers College, St. Cloud, 1903—
- ALBERTINA C. ANDERSON**.....Supervisor in Training School  
 Training: Graduate, State Teachers College, St. Cloud; Student, University of Minn., and Teachers College, Columbia University.  
 Experience: Teacher and Grade Principal, St. Cloud, Minn.; State Teachers College, St. Cloud, 1905—
- JULIA E. BOOTH**.....Literature  
 Training: B. S., Teachers College, Columbia University; Graduate Student, University of Chicago.  
 Experience: Teacher and Principal of High School, Marshall, Minn.; State Teachers College, St. Cloud, 1905—
- BLANCHE E. ATKINS**.....Principles of Education  
 Training: Graduate, State Teachers College, St. Cloud; Student, University of Minn.; Ph. B., Hamline University; Student, Teachers College, Columbia University.  
 Experience: Teacher in grades and vacation schools, Minneapolis; Instructor, University of Minn.; State Teachers College, St. Cloud, 1906—

- EVALIN PRIBBLE**.....English  
 Training: Graduate, Teachers College, Winona; B. S., Teachers College, Columbia University.  
 Experience: Grade Schools of Sauk Centre and Anoka, Minn.; State Teachers College, St. Cloud, 1906—
- LEONARD A. WILLIAMS**.....Industrial Arts  
 Training: Student, New York University; Student, New York School of Fine and Applied Arts.  
 Experience: Draftsman and Designer, Dixon, Ill.; Experimental Department Machinist and Shop Foreman, Dixon, Ill.; Director of Manual Arts, Dixon, Ill.; State Teachers College, St. Cloud, 1907—
- CARRIE E. MINICH**.....Art and Drawing  
 Training: Student, Art Institute, Chicago; Academy of Fine Arts and Prang School, Chicago; Special Student, Design Art Institute, Chicago; Applied Arts School, New York City; Student, University of Chicago.  
 Experience: Studio Teaching, Paola, Kan.; Supervisor of Drawing, Brainerd, Minn., and Billings, Mont.; State Teachers College, St. Cloud, 1908—
- DARIUS STEWARD**.....American Government and History  
 Training: A. B., Dartmouth College.  
 Experience: Rural Schools of New England and Minnesota; Grade Principal, Garden City, Mankato, and St. Charles, Minn.; Supt. of Schools, Rochester, Minn., Fargo, N. D., and Stillwater, Minn.; State Teachers College, St. Cloud, 1908—
- CARRIE BARDEN**.....Composition  
 Training: A. B., Upper Iowa University.; A. M., University of Michigan.  
 Experience: Principal, High School, Waukon, Iowa; English Department, Oshkosh Normal School; State Teachers College, St. Cloud, 1910—
- CHARLOTTE M. KNUDSON**.....Rural School Department  
 Training: Graduate, State Teachers College, St. Cloud; Student, University of Minnesota and University of Chicago.  
 Experience: Rural Schools of Minn.; Grade Teacher, Pelican Rapids; Teacher and Grade Principal, St. Cloud, Minn.; County Superintendent, Otter Tail County, Minn.; Instructor summer session, University of Minnesota; State Teachers College, St. Cloud, 1912—
- STELLA R. ROOT**.....Music  
 Training: Ph. B., and Ph. M., Hillsdale College, Michigan; Diploma, American Institute of Normal Methods in Music, Evanston, Ill.; Student, The New England Conservatory, Boston, Mass.; Walter Spry Music School, Chicago, Illinois.  
 Experience: Supervisor of Music, Jackson, Mich., Springfield, and Peoria, Ill.; Director of Music, School of Education, University of Chicago; State Teachers College, St. Cloud, 1913—
- CLIFFORD O. BEMIS**.....Mathematics  
 Training: Graduate, State Teachers College, St. Cloud; B. A. University of Minn.; Graduate Student, University of Minn.  
 Experience: Teacher and Principal, Public Schools, Minnesota; State Teachers College, St. Cloud, 1914-1917, 1919—
- HELEN HILL**.....Language  
 Training: Graduate, State Teachers College, St. Cloud; A. B., University of Minn.; Graduate student, Teachers College, Columbia University; University of California.  
 Experience: English, St. Cloud High School; State Teachers College, St. Cloud, 1915—
- KARL ADAMS**.....American Government  
 Training: B. S., Ohio University.  
 Experience: High School, Moline, Ill.; State Teachers College, St. Cloud, 1916—

- EDITH E. GRANNIS**.....Librarian  
 Training: Student Hamline University; A. B. University of Wisconsin; Certificate, New York State Library School.  
 Experience: Assistant Librarian and Summer School Librarian, State Teachers College Mankato; Librarian, High School, Buhl, Minn.; State Teachers College, St. Cloud, 1917—
- ETHEL G. GRAVES**.....Geography  
 Training: Graduate, State Teachers College, St. Cloud; A. B., University of Minnesota Graduate Student, University of Chicago.  
 Experience: Rural Schools of Minn.; Grade Schools, Warren, Minn.; Teacher in High School, Sauk Centre, Minn.; Supervising Principal, Two Harbors, Minn. State Teachers College, St. Cloud, 1918—
- VERA BLIVEN**.....Supervisor in Training School  
 Training: Graduate, State Teachers College, St. Cloud; Student, University of Minnesota. University of Chicago.  
 Experience: Grade Teacher, Fairmont and Chisholm, Minn.; State Teachers College St. Cloud, 1919—
- HELEN R. JACKSON**.....Supervisor in Training School  
 Training: Graduate, State Teachers College, St. Cloud; Student, University of Minnesota  
 Experience: Rural Schools of Minnesota; State Teachers College, St. Cloud, 1920—
- GEORGE W. FRIEDRICH**.....Biology  
 Training: B. A., Ripon College; Graduate Student, University of Wisconsin; M. S. University of Chicago; Post-graduate student, University of Chicago.  
 Experience: Science, High Schools of Illinois and Wisconsin; Central High School, Superior Wisconsin; University of Chicago High School; State Teachers College, St. Cloud, 1921—
- LEWIS G. VANDER VELDE**.....History and Dean of Mer  
 Training: A. B., A. M., University of Michigan.  
 Experience: Rural Schools of Michigan; Teaching Assistant, University of Mich.; History and Civics, Culver Military Academy, Pawling School, Pawling, New York and Northwestern High School, Detroit, Mich.; State Teachers College, St. Cloud, 1921—
- MAMIE R. MARTIN**.....Associate Librarian  
 Training: A. B., Ohio Wesleyan University; Certificate, New York State Library School.  
 Experience: Teacher in High School, Alma, Wisconsin; Librarian, Emerson High School Branch, Gary, Indiana; Cataloger, Public Library, Aurora, Indiana; Librarian, Public Library, Clinton, Indiana; State Teachers College, St. Cloud, 1922—
- JOHN R. McCRORY**.....Psychology  
 Training: Graduate, State Normal School, Oshkosh, Wisconsin; B. A., University of Wisconsin; A. M., University of Wisconsin.  
 Experience: Principal and Superintendent, Public Schools, Wisconsin; Extension Division, University of Wisconsin; Assistant, School of Education, University of Wisconsin; State Teachers College, St. Cloud, 1922—
- EDITH B. COWIN**.....Assistant Director of Training, Primary Grades  
 Training: Graduate, State Teachers College, Winona; A. B., University of Minnesota; Graduate Student, Teachers College, Columbia University.  
 Experience: Teacher of Kindergarten, Hibbing, Minn.; Grades, Glencoe and Minneapolis, Minn.; Reconstruction Aide in Occupation Therapy, Base Hospital, Camp Pike, Ark. and U. S. Army General Hospital, Denver, Colorado; State Teachers College, St. Cloud, 1922—



MABEL A. PAULL.....Assistant Director of Training, Cadet Teaching  
Training: Graduate, Iowa State Teachers College; Student, University of Colorado;  
A. B., and A. M., University of Iowa.

Experience: Teacher in Rural Schools and Grades, Principal of High School, and Superintendent of Schools, Iowa; Research Assistant, College of Education, University of Iowa; Supervisor of Grades, Denison, Iowa; State Teachers College, St. Cloud, 1922—

NORA J. SWAN.....Supervisor in Training School  
Training: Graduate, State Teachers College, Cedar Falls, Iowa; Student, Washington University; Student, Chicago University.

Experience: Rural Schools of South Dakota; Grade Schools, Iowa; Everett and Seattle, Washington, and Minneapolis, Minnesota; State Teachers College, St. Cloud 1922—

GERTRUDE I. SAMUELS.....Physical Education  
Training: Graduate, Highland Park College of Music; A. B., Iowa State Teachers College; Student, University of Chicago.

Experience: Rural, Polk County, Iowa; Summer-Director of Playground, Van Wert, Ohio; Physical Director, Van Wert County, Y. W. C. A.; Teacher of Physical Education, Des Moines Public Schools; State Teachers College, St. Cloud, 1922—

LEILA M. ROBINSON.....Penmanship  
Training: Graduate, Gorham Normal School, Maine; Palmer School of Penmanship, New York City; Student, Hyannis Normal School, Massachusetts; Teachers College, Columbia University.

Experience: Rural Schools and grades, Maine; Grades and Non-English Speaking Class, Attleboro, Massachusetts; Madison Academy, Madison, and grades, South Orange, New Jersey; State Teachers College, St. Cloud, 1923—

LUCY AIKIN.....Home Economics  
Training: Graduate, Millersville Normal School, Pa.; Drexel Institute, Philadelphia; B. S., Teachers College, Columbia University.

Experience: Grade Teacher, Newtown, Pa.; Central High School, Philadelphia; State Teachers College, St. Cloud, 1923—

LESLIE D. ZELENY.....Sociology and School Administration  
Training: B. S., University of Minnesota; A. M., Columbia University; Graduate student University of Minnesota and Columbia University.

Experience: Social settlement work, Minneapolis and New York; recreational instructor and principal of private vacation school, Minneapolis; Assistant Scout Executive, Boy Scouts of America, Minneapolis; Military Forces, U. S. A., 2 years; research assistant, University of Minnesota; State Teachers College, St. Cloud, 1923—

LEILA J. JORGENSEN.....Associate in Music  
Training: Bachelor of Music, American Conservatory of Music, Chicago, Illinois. Voice Student, Karleton Hackett; Piano Student, Silvio Scionti; Student, Mt. St. Clare College, Clinton, Iowa.

Experience: Studio and teaching, Delmar and Clinton, Iowa; State Teachers College, St. Cloud, 1923—

FLORENCE KELLY ZELENY.....Reading and Speech  
Training: A. B., University of Michigan.

Experience: Grade Teacher, Ann Arbor, Mich.; County Normal Supervisor, Port Huron, Mich.; Instructor in English, Ferris Institute; State Teachers College, Ypsilanti, Mich.; State Teachers College, St. Cloud, 1923—

AGNES H. KERLIN.....Supervisor in Training School  
Training: Ph. B., University of Chicago, Chicago, Ill.; Graduate Student, Toledo University, Toledo, O.

Experience: Grade Schools and Americanization Teacher, Toledo Public Schools, Toledo, O.; State Teachers College, St. Cloud, 1923—

- JULIA E. NORRIS**.....Supervisor in Training School  
 Training: Graduate, State Teachers College, Kalamazoo, Michigan; Ph. B., University of Chicago.  
 Experience: Teacher in rural schools, city grades, special teacher of English in upper grades; Supervisor, State Normal College, Emporia, Kansas; Supervisor, State Normal College, Dillon, Montana; State Teachers College, St. Cloud, 1923—
- GLADYS V. CHAPIN**.....Supervisor in Training School  
 Training: Student Columbia University; B. S., University of Minnesota.  
 Experience: Supervisor, State Teachers College, Bemidji, Minnesota; Supervisor, State Teachers College, Spearfish, South Dakota; State Teachers College, St. Cloud, 1924—
- JUANITA DAVIES**.....Associate in Music  
 Training: Graduate Ripon College School of Music, Ripon, Wisconsin; American Institute of Normal Methods, Evanston, Illinois; Piano and Accompanying, Edgar Nelson, Chicago, Ill.; Piano, H. Ray Palmer, Minneapolis, Minnesota.  
 Experience: Private Piano Teaching; Special Teacher and Supervisor of Music, Hinsdale, Ill.; State Teachers College, St. Cloud, 1924—
- L. RUTH CADWELL**.....Supervisor in Training School  
 Training: Iowa State Teachers College, A. B., and Supervisor's Diploma; Post-Graduate Student, Iowa State Teachers College.  
 Experience: Teacher in rural schools, grades, and high schools of Iowa. Supervisor in Iowa State Teachers College; Miami University, Oxford, Ohio; State Teachers College, St. Cloud, 1924—
- ROSE E. PARKER**.....Assistant Director of Training, Intermediate Grades  
 Training: A. B., University of North Dakota; A. M., University of Chicago.  
 Experience: Rural Schools, Teacher and Principal of Grade Schools, North Dakota; Superintendent of consolidated town schools, North Dakota, State Teachers College, St. Cloud, 1924—
- HENRIETTA WATERS**.....Supervisor in Training School  
 Training: Graduate Eastern State Teachers College, Charleston, Ill.; Student, Indiana University; A. B., University of Illinois.  
 Experience: Grade Teacher, Monticello, Illinois, and Indianapolis, Indiana; Demonstration Teacher, Indiana University; State Teachers College, St. Cloud, 1924—
- LILLIAN M. BUDGE**.....Supervisor in Training School  
 Training: Graduate State Normal School, Valley City, N. D.; A. B., University of North Dakota.  
 Experience: Grades, High School and Americanization Work, East Grand Forks, N. D.; Minneapolis, and Panama Canal Zone; Assistant, North Dakota State Department of Education; State Teachers College, St. Cloud, 1924—
- PERCY C. McCHESNEY**.....Supervisor of Cadet Teaching  
 Training: Student, University of Minnesota; A. B., Carleton College, Northfield, Minnesota.  
 Experience: Teacher in rural schools and grades; Teaching of Public Speaking in High Schools, Principal of High Schools, Superintendent of Schools, Minnesota; State Teachers College, St. Cloud, 1924—
- DOROTHY SKEWES**.....Nurse  
 Training: B. S., and Graduate Nursing, University of Minnesota; Public Health Nursing, University of Minnesota; Registered Nurse, Minnesota.  
 Experience: State Teachers College, St. Cloud, 1924—

MILDRED McCHESNEY.....English

Training: A. B., Grinnell College, Iowa; Graduate Student, University of Minnesota.  
Experience: Teacher and Principal in High Schools of Iowa and Minnesota; State Teachers College, St. Cloud, 1924—

LOUISA A. VAN DYKE.....Principles of Education

Training: Butler College, Indiana; A. B., University of Michigan; A. M., Iowa State University; Graduate Student, University of Michigan, Iowa State University, and Iowa State Teachers College; Student, Wichita Conservatory of Music, Kansas; Ottumwa Conservatory, Iowa; Music Department of Iowa State Teachers College.

Experience: Teacher of Mathematics, Butler College, Indiana, and High Schools of South Dakota and Iowa, Indiana, Kansas; Principles of Education and Psychology, State Normal School, Indiana, Pa.; Normal Training Supervisor, Ottumwa, Iowa; Institute Lecturer for Indiana, Kansas, and Iowa; Teacher of Methods of Teaching Elementary Mathematics, Summer School, Iowa State Teachers College; State Teachers College, St. Cloud, 1925—

MARGUERITE C. McBRIDE.....Supervisor of Cadet Teaching

Training: Ph. B., and Graduate of Kindergarten Primary Supervisors' Department, University of Chicago; Graduate Student, University of Chicago.

Experience: Elementary Schools Maywood, Evanston, and Chicago, Illinois; State Teachers College, St. Cloud, 1924—

ALMA JENSEN.....Rural School Department

Training: Graduate State Teachers College, Madison, South Dakota; Student, St. Olaf College and University of Minnesota; Special Student of Education in Denmark.

Experience: Rural Schools of South Dakota; Rural Department, State Teachers College, Madison, South Dakota; State Teachers College, St. Cloud, 1925—



## Business Officers

Charles D. Schwab.....	Resident Director
Joseph C. Brown.....	President
Gertrude Cambell.....	Accountant
Anne Wikeen.....	Secretary
Lillian Lind.....	Assistant Accountant
Eva Foss.....	Secretary
Rose Hahn.....	Office Assistant
Grace Smith.....	Assistant
Angela Walsh.....	Secretary
Ellen Ready.....	House Director, Lawrence Hall
Bertha Sharp.....	House Director, Shoemaker Hall

## Additional Faculty Members, Summer Session, 1924

Anna Brezler, Normal Training Department, Minneapolis, Minn.  
 Elizabeth Clark, Principal, High School, St. Cloud, Minn.  
 Agnes Hatch, Normal Training Department, Chisholm, Minn.  
 Herbert Sorenson, Northwestern University, Evanston, Ill.  
 Paul R. Spencer, Superintendent, St. Cloud, Minn.  
 John Williams, Industrial Supervisor, Oak Park, Ill.

## Standing Committees of the Faculty

### Lectures and Entertainment—

Mr. Friedrich, Miss Hill, Miss Davies, Mr. Talbot.

### Athletics—

Mr. Lynch, Miss Samuels, Mr. Friedrich, Mr. Bemis, Mr. Zeleny.

### Social Affairs—

Mrs. Garvey, Miss Cowin, Miss Samuels, Miss Anderson, Mr. Adams,  
 Mr. McCrory, Mr. Talbot, Mr. Lynch, Mr. VanderVelde

### Student Welfare—

Mr. VanderVelde, Mrs. Garvey, Mrs. Sharp, Miss Ready, Miss Paull,  
 Miss Knudson, Miss Graves, Mr. McCrory.

### Literary Societies—

Miss Dopp, and faculty advisors of the various societies.

### Publicity—

Mr. Williams, Miss Barden.

### Library—

Miss Quayle, Miss Atkins, Miss Douglas, Miss Booth, Miss Grannis.

## HISTORY

The institution was opened in 1869 as the St. Cloud State Normal School. In 1921 the name was changed to the St. Cloud Teachers College.

The college has more than 5,000 graduates. It is the largest of the Minnesota Teachers Colleges and there is great demand for the graduates. The institution is on the list of institutions accredited by the North Central Association of Colleges.

## Location

The college is located in the City of St. Cloud which has a population of about 20,000. St. Cloud is on the transcontinental lines of the Great Northern and the Northern Pacific Railways. Branch lines also pass thru the city. Bus lines furnish hourly transportation to Minneapolis and St. Paul over the paved Jefferson Highway and busses run at frequent intervals from St. Cloud to most of the larger cities and towns of Central Minnesota. St. Cloud is one of the most easily accessible cities in the state.

## Purpose of the College

The college is maintained by the State of Minnesota for the purpose of preparing teachers for the public schools. The college is, therefore, a professional institution.

## Curricula Offered

The college offers the following curricula:

1. A two-year curriculum for high-school graduates, leading to the advanced diploma.
2. A three-year curriculum for high-school graduates, leading to special diplomas in industrial arts and in music.

A four-year curriculum leading to a degree was authorized by the legislature in 1921. Such a curriculum is now being worked out. It will provide special courses for expert elementary teachers, and for teachers in junior high schools. There is no intention of weakening or abandoning the present two-year curriculum. For some years the majority of the grade teachers of Minnesota will have a two year curriculum as their maximum preparation. A number of city systems, however, are ready to pay for additional professional training. Ambitious teachers who already have the advanced diploma should plan to continue their work for the degree as soon as the curriculum is offered.

**QUARTERS AND CREDITS:** The regular quarters are twelve weeks and the summer session is six weeks in length. Recitation periods are fifty minutes in length. Classes meet four times per week during the regular quarter and daily during the summer session.

## Admission

**TIME OF ENTRANCE:** Students can enter at the beginning of any regular quarter or at the beginning of the summer session and pursue their work until graduation.

## Entrance Requirements

A high-school diploma or its equivalent is required for entrance. Applicants for admission are urged to submit a statement of their credits, certified by the superintendent or principal of the high school from which they were graduated. A perforated blank for this purpose will be found on the back page of this catalog.

**ADVANCED STANDING:** No standings are credited from first-class certificates or for under-graduate work in high schools. Credits for regular college and university work are accepted if they apply on the curriculum.

The St. Cloud State Teachers College will grant students who graduate from teacher-training departments of Minnesota high schools one year of credit provided:

1. That such students shall have graduated from a teacher-training department which is maintained strictly on a graduate basis.

2. That students shall have had one year of successful rural teaching experience after completing the post-graduate work in the teacher-training department.

(No advanced credits will be allowed to graduates of teacher-training departments in high schools who have not taught successfully for at least one school year following graduation from the training department.)

3. That the students shall successfully complete at least two consecutive quarters in the St. Cloud State Teachers College.

**TERM OF RESIDENCE:** A minimum of one year of residence is required for graduation from any curriculum offered by the college.

## Preferred High-School Work

The following named high-school subjects are urged as desired prerequisites: English, 4 years; biology (botany or zoology, and physiology), 1 year; physical science (physics or chemistry), 1 year; history (modern or ancient), 1 year. In addition, certain other preliminary subjects are strongly recommended, in the order of preference, as follows: United States history and American government, 1 year; algebra, 1 year; geometry, 1 year; language (modern or ancient), 2 years; social science,  $\frac{1}{2}$  year; drawing,  $\frac{1}{2}$  year; music, 1 year; industrial subjects, 1 year.

## Health

The health of the students is given special attention. The college maintains a resident nurse who devotes her time to protecting the health of the students. She may be consulted by the students without charge.

No charge is made for the drugs and other medical supplies used by the nurse.

It is desired that each entering student present to the nurse a certificate of recent vaccination.

Parents may send their sons and daughters to this college with the assurance that their health will be carefully protected.

## **Diplomas and Certificates**

**THE ADVANCED DIPLOMA:** The diploma granted on the completion of one of the two-year curricula is called the advanced diploma. It is valid as a first-class certificate for two years from its date. After two years of successful teaching this diploma, indorsed by the president of the college granting it and by the State Commissioner of Education, becomes a first-class certificate for life. The advanced diploma entitles its holder to teach in any elementary grade of the public schools and to serve as a principal of a state elementary graded school.

**INDORSEMENT OF DIPLOMA:** A fee of one dollar is required from each applicant for the indorsement of a college diploma.

**FIRST-CLASS CERTIFICATES:** A first-class certificate, valid for two years, may be granted to students who complete one year of the two-year curriculum, including certain work prescribed for those who are planning to teach in rural schools. Recipients of first-class certificates must be at least eighteen years of age.

These certificates may be renewed for a period of five years after one year of successful teaching and the presentation of two State Reading Circle certificates.

## **University Standing**

Graduates of high schools who complete a two-year curriculum will be given two years of credit in the College of Education of the University of Minnesota and one year of credit in the College of Science, Literature and Arts.

## **Grading**

The work of the students is graded according to the following divisions: grade A meaning excellent; B, very good; C, average; D, passing; E, failing. In transcribing marks, the following per cent equivalents of these letters have been agreed upon: 93 per cent for A, 87 per cent for B, 82 per cent for C, 77 per cent for D, 74 per cent for E.

## **Honor Points**

The following system of honor points is used: A, three points; B, two points; C, one point; D, no points. A student must have at least as many honor points as credits before he is assigned to student teaching and before he is graduated from any curriculum. The courses which are prerequisites to

student teaching are those designated for the first year in the respective curricula. For graduation two of these honor points must be in student teaching.

The honor point requirements apply to candidates for graduation in June, 1926, and thereafter.

Students entering from other colleges must have an average of C in their previous college work. They must receive as many honor points as credits at the St. Cloud State Teachers College, and two of their honor points at this institution must be in student teaching.

Students who are found to be especially deficient in oral or written English or in spelling will be required to do special work in these subjects without extra credit. The college will not recommend students who are deficient in these subjects and consequently the opportunity to correct such deficiencies should be regarded as a privilege.

Students should not expect to receive credit for work unless they are regular and punctual in attendance at all classes and at the assembly exercises. All absences and tardinesses must be accounted for.

## **General Information**

New students should use the blank in the back of this catalogue for submitting their high-school records. This blank must be filled out and signed by the superintendent or principal of the high-school. Students are urged to obtain from the school superintendent or high-school principal a statement specifically recommending them as desirable students for a teacher's college.

### **New Students**

Students who are entering the college for the first time should bring with them high-school credits, diplomas, and such certificates as they may have from the High School Board, and state teachers' certificates. These standings should be presented at the office of the registrar the first day of the quarter.

The college offers curricula which prepare teachers for graded and ungraded schools ranging from the kindergarten through the eighth grade and junior high school and, under special conditions, for high-school work. Curricula for the preparation of teachers of industrial arts, music, and rural education, and for the training of supervisors and departmental teachers are maintained.

There are five daily sessions each week.

Evening study hours are observed, except at week-ends.

The strict observance of study hours is of great importance.

The college maintains high scholastic standards and special attention is given to the development of proper study habits.

Students whose physical condition is such that they are seriously handicapped in school work and those who found great difficulty in doing their high-school work successfully should not plan to enter the institution.

### **Publications**

**THE COLLEGE CHRONICLE:** The College Chronicle is issued bi-weekly and distributed to the faculty and students. It contains a news section.



Activities of the various organizations and events of interest to members of the college and alumni are recorded. The news section is a brief digest of the college functions and activities.

Valuable articles are contributed by faculty members.

**THE TALAHU:** A college annual, published under the auspices of the senior class, is a distinctive and helpful feature of the work of the institution.

## **The Dormitories**

The college has two modern dormitories for young women, Lawrence Hall and Shoemaker Hall. These dormitories are located on the campus overlooking the Mississippi River. In these dormitories the young women may enjoy the influences of a cultured home, and every effort is made to care for the health, comfort, and general welfare of the students.

Large living rooms are available for social gatherings.

There are laundries in the basements so that young women who desire may do their own washing and ironing.

Rooms in the dormitories contain two closets each. Each room is supplied with study table, reading lamp, chairs, two single bedsteads, springs, mattresses, pillows, dresser, pillow cases, sheets, blankets, and spreads. Each student is expected to bring towels and a dresser scarf.

The price of board and room is now \$5.75 per week. All bills for board and room **must** be paid in advance by the month. No discount is made for absences of less than a week, except in case of the regular vacations as indicated in the college calendar.

The social life of young women receives special attention. There is opportunity for social service and helpfulness, which is of the greatest value to the young teacher. Good fellowship prevails.

**Dormitory rooms are not rented for less time than a college year except to those who graduate during the year.**

Preference in choice of rooms is given in the order of application. Students who wish to reserve a room at either of the dormitories are urged to make reservations at as early a date as possible. Application for rooms should be made to Miss Gertrude Cambell, Registrar. A money order for \$5.00 must accompany the request for a room. This deposit is later applied on a monthly payment for board and room.

## **Board and Room in Private Homes**

A faculty committee assists students to obtain desirable boarding and rooming places. Students are advised to personally inspect rooms before engaging them. The cost of board in private homes is from \$5.00 to \$5.50 a week. The price of rooms varies from \$12.00 to \$20.00 a month, two in a room, each paying half of this amount.

Students who do not board and room at home or at the dormitories are **required** to secure the approval of the Dean before engaging boarding and rooming places.

**The college authorities do not approve of young women taking their meals regularly at downtown restaurants or hotels.**

**Students are not permitted to change their boarding or rooming places without permission from the college authorities.**

Young men and women are not permitted to room in the same house. This applies also where the house is occupied by more than one family.

When a student engages a rooming place, it is understood that he is not to change his room before the end of the quarter unless a specific agreement to the contrary is made with the landlady.

### **Expenses**

**TUITION:** Tuition is free to all students who sign a declaration of intention to teach for two years in the public schools of Minnesota. Those who do not sign such declaration of intention pay tuition at the rate of \$10.00 per quarter.

**REGISTRATION FEE:** The registration fee is \$5.00 per quarter.

**STUDENT'S ACTIVITY FEE:** A fee of \$4.50 per quarter is paid by each student, and covers (1)—the use of text-books required in classwork, the use of the library, laboratories, gymnasium, and general equipment of the college; (2)—tickets of admission to lectures, concerts, and plays given as numbers on the regular entertainment course; (3)—athletic contests; (4)—the annual class play and glee club concert; (5)—the services of the college nurse; (6)—the college paper.

**All fees are payable in advance at the beginning of each quarter.**

### **Library and Reading Rooms**

The library is conveniently and pleasantly located on the first floor of the library building. The view of the Mississippi and the country adjoining, which may be seen from these rooms, is most interesting.

The number of volumes in the library is about nineteen thousand. The collection includes the standard books of the teaching profession, about one hundred of the leading general and educational periodicals, and files of newspapers. There is also a useful file of bound magazines. Government documents are another valuable feature of the collection. Forty-eight hundred mounted pictures and much unmounted picture material supplement in a practical way the college work.

Trained librarians give lessons in library science, which enable the students to become efficient users of books and libraries. Bulletins of children's books and of other subjects of interest to teachers are furnished.

### **Children's Library**

The children's library is in a room adjoining the main library. It is attractively and appropriately furnished for the children of the training school. It contains more than two thousand carefully selected books which provide an opportunity for students to become acquainted with the best literature for children.

Children's magazines, picture books for young readers, and illustrated editions of children's classics are interesting features of the children's library.

### **The Training School**

An efficient Teachers College must have adequate training-school facilities. Those who are to become teachers should have ample practice in teaching under typical school conditions.

The campus training school at St. Cloud, known as Riverview School, supplemented by the elementary grades and junior high school of the St. Cloud public schools, furnishes unusually good opportunities for student teaching. Riverview School consists of eight grades in addition to the kindergarten. It is essentially a pedagogical laboratory in which the methods of instruction and the pedagogical principles taught in the college are applied. Students observe well-trained teachers at work and they develop their craftsmanship in teaching by actual experiences under normal conditions. Students also teach in the city schools of St. Cloud under expert supervision.

### **Entertainments**

**COURSE OF ENTERTAINMENTS:** The college maintains an entertainment course and many of the best lectures, concerts, and plays are given. The fee, which is paid by all students, includes admission to all numbers of the entertainment course.

**DRAMATICS:** A play is presented each year by members of the senior class. Some of the plays that have been presented in recent years are: *The Laughter of the Gods*, by Dunsany; *The Passing of the Third Floor Back*, by Jerome; *The Man Who Married a Dumb Wife*, by France; *Much Ado About Nothing*, *Twelfth Night*; *As You Like It*; *Midsummer Nights Dream*; *Enter Madame*, by Varesi and Byrne, will be presented this year.



## **College Organizations**

### **The Women's Forum**

The Women's Forum offers the opportunity of open discussion on topics of particular interest in current political affairs, government problems, and topics of world significance. Emphasis is placed on presenting all sides of each topic discussed. Meetings are held bi-monthly and membership is open to all women of the College.

### **The Men's Forum**

The Men's Forum is an organization for the purpose of discussing current topics of national and international importance. Meetings are held bi-monthly. Membership is open to all men of the college.

### **The Camera Kraft Club**

The Camera Kraft Club was organized for the purpose of acquainting the students of the college with the many possibilities which photography offers in helping to place proper emphasis on visual education in the public schools. A study of the fine arts furnishes a background to guide the student in studying many of the problems which arise in modern industrial and social conditions. Prospective members are asked to confer with Mr. L. A. Williams for further information about the Club as the membership is limited.

### **Glee Clubs**

Glee Clubs with limited membership are maintained for women and for men. Early in the college year those who desire to become members of one of the glee clubs are given tests in voice, ear memory, sight reading, and part singing.

The glee clubs give a number of concerts during the year.

### **Orchestra**

Those who desire to become members of the college orchestra are urged to bring their orchestral instruments when they enter the college as the try-outs for membership are held early in the college year. The orchestra makes a number of public appearances during the year.

Class instruction in violin and instruction in other orchestral instruments are offered at nominal fees to students who wish to prepare for orchestral work.

### **The Public Speaking and Debating Society**

The Public Speaking Society is a student organization, functioning with the cooperation of a faculty member. The purpose is to gain experience in debate, extemporaneous speaking, declamation, and readings. Short plays are also presented by club members. Meetings are held bi-monthly.

### **The Art Club**

The Art Club holds bi-monthly meetings, at which time illustrated lectures from the American Federation of Arts and the State Art Society are given and illustrations are explained. Papers and talks are given by the students along the line of study planned by the program committee. The Club sponsors exhibits of Minnesota artists and art exhibits and lectures from abroad.

The Art Club was organized to offer an opportunity to those who wish further study of Art than the curricula provide. Membership in the Club is open to all who are interested.

### **Young Women's Christian Association**

Young Women's Christian Association membership is open to all women of the college. The Association fosters the Big Sister Movement, European Student Relief, and church attendance. Both social and devotional meetings are held. In some of these meetings American and world problems are discussed. The Association strives to increase good fellowship on the campus and to broaden the outlook to world fellowship and understanding.

### **The Newman Club**

The Newman Club is a member of the national Newman Club Society, which has branches in many of the colleges and universities of the country. The club is open to all Catholic students of the college.

The club emphasizes both the social and the spiritual side of college life. Parties, and social evenings combined with addresses by noted speakers make the club work interesting and valuable.

### **The Shakespeare Club**

The Shakespeare Club was organized during the present college year. A series of lectures was given on Shakespeare. This proved to be a popular club. The subjects of the lectures were:

Shakespeare's London	Romeo and Juliet
The Actor's Profession and His Stage	Othello
Richard III	The Man, Shakespeare

### **Training for Boy Leadership**

The chief aim of this club is to teach young men how to lead boys in extra-curricular activities. The work is centered around a definite program of scout activities. Men who finish this work successfully are prepared to take charge of a Boy Scout troop. The National Headquarters of the Boy Scouts of America grants a certificate for this work.

### **Training for Camp Fire Guardians**

The training course for Camp Fire Guardians prepares a student to become a leader of a Camp Fire group. The class is so organized that practical work is given along the line of the Seven Crafts which are the bases of Camp Fire work. A certificate is granted to those completing the course.

### **The "M" Club**

The "M" Club is an athletic organization for women students. Under the leadership of heads of various sports, the students qualify for membership by passing certain efficiency tests in athletics, sportmanship, scholarship, and general health. Only those are eligible to membership who have earned an "M" granted by the State Department of Physical Education.

### **The Hiking Club**

The Hiking Club, popularly called the H. O. P. Club, is a women's organization of twenty members, organized in 1918, for the purpose of promoting hiking and good fellowship. Meetings of the club are held at regular intervals and all members are required to take a certain number of hikes each quarter.

### **Literary Societies**

There are eight large literary societies. Each society elects a faculty supervisor and holds bi-monthly meetings. The programs for the year are planned early in the fall quarter and a serious study is made each year of some worthy topic. Each society presents one program during the year before the entire faculty and student group.

### **The Museums**

One of the museums contains an attractive collection of mammals, butterflies, and insects. The college has a splendid collection of mounted birds of the well known orders. This collection adds distinctively to the rapidly growing biological museum. The herbarium contains hundreds of classified specimens.

The geological museum contains a large collection of minerals and valuable fossils.

### **Alumni Association**

The college has an active and loyal Alumni Association, the object of which is to continue the friendships of student days, to promote an intimate relationship between the alumni and the students of the College and to advance the cause of education. The Association meets twice a year. The fall meeting is held at the time of the State Educational Association and the spring meeting during commencement week.

### **Athletics**

Competent directors are in charge of the gymnasium and the various sports and games receive attention in season. The football and basket ball teams have made excellent records. A lake and the Mississippi River provide facilities for skating. Tennis courts are provided by the college. The new athletic field will be ready for use in September. Special courses in playground games are offered and special instruction is given in swimming.

**Physical Education Activities for Women**

1. Posture Training and Correction.
2. Organized Games.
  - Hockey
  - Soccer
  - Volley Ball
  - Indoor Baseball
  - Basket Ball.
3. Minor Team Games for Elementary Grades.
  - Simplified Soccer
  - Newcomb
  - Long Ball
  - Captain Ball
  - End Ball
  - Punch Ball
  - Bat Ball
4. Unorganized Games.
5. Rhythmic Work.
  - Rhythmic Games and Dances
  - Folk Dancing
6. Swimming.
7. Individual Efficiency Tests.
8. Track and Field Events.
9. Playground Methods.

## Course of Study

### The Two-Year Curricula

Ninety-six quarter credits beyond high-school graduation are required for the completion of any one of the two-year curricula.

The following seventy-two quarter credits must be included in the ninety-six which are required. These are the same in all Minnesota Teachers Colleges.

	Quarter Credits
American Government.....	4
American History.....	4
Arithmetic.....	4
Drawing or Music.....	4
English—	
Composition.....	4
Literature.....	4
Reading and Speech.....	4
Elective.....	4
Geography.....	4
Hygiene and Sanitation.....	4
Observation and Teaching.....	14
Penmanship.....	2
Principles of Education.....	4
Psychology.....	8
Sociology.....	4
Total.....	72

The elective privilege of twenty-four quarter credits enables a student to make specific preparation for lower, middle, or upper grade teaching as provided in the differentiated curricula which follow.

### Differentiated Curricula

The following differentiated curricula all contain the seventy-two quarter credits as prescribed above. The remainder of the courses which make up a given curriculum are selected to meet the needs of the student who desires to prepare for special grade work or for work in special subjects. Curricula thus organized meet the needs of the student better than a general curriculum which permits indiscriminate electives. In choosing one of these curricula the student elects a special field of work.

### Kindergarten-Primary Curriculum

**First Year**  
 Arithmetic  
 Composition  
 Drawing or Music  
 English III A  
 Geography

**Second Year**  
 American Government  
 American History  
 Children's Literature  
 Industrial Arts I  
 Lower Primary Education

Hygiene and Sanitation	(Required for grades 1 and 2)
Literary Types	Music or Drawing
Penmanship	Principles of Education II
Principles of Education I	School Administration
Psychology I	Sociology
Reading and Speech	Teaching and Observation
Elective	Elective

The above curriculum prepares students to teach in the first, second, and third grades.

*All first-year subjects are prerequisites for student teaching in the second year.*

### **Intermediate Grade Curriculum**

<b>First Year</b>	<b>Second Year</b>
American History	American Government
Arithmetic	Children's Literature
Composition	Industrial Arts I
Drawing or Music	Music or Drawing
English III A or B	Principles of Education II
Geography	Psychology II
Hygiene and Sanitation	School Administration
Literary Types	Sociology
Penmanship	Teaching and Observation
Principles of Education I	Elective
Psychology I	
Reading and Speech	
Elective	

The above curriculum prepares students to teach in the third, fourth, fifth, and sixth grades.

*All first-year subjects are prerequisites for student teaching in the second year.*

### **Upper Grade Curriculum**

<b>First Year</b>	<b>Second Year</b>
American Government	Children's Literature
American History	Drawing or Music
Arithmetic	Educational Psychology
Composition	Physical or Natural Science
English III B	School Administration
Geography	Sociology
Hygiene and Sanitation	Teaching and Observation
Literary Types	Principles of Education II
Penmanship	Electives
Principles of Education I	
Psychology I	
Reading and Speech	
Elective	

The above curriculum prepares students to teach in the sixth, seventh, and eighth grades.

*All first-year subjects are prerequisites for student teaching in the second year.*



**Electives May be Chosen From the Following**

Biology	Lower Primary Education
College Algebra	Music
Drawing	Nature Study
History	Penmanship (Advanced)
Industrial Arts	Physiography
Junior High School Mathematics	Printing
Library Methods	Psychology
Literature	Solid Geometry
	Trigonometry

**Rural School Curriculum**

First Year	Second Year
American History	American Government
Arithmetic	Children's Literature
Composition	Drawing
English III, A or B	Elective
Geography	Literary Types
Hygiene and Sanitation	Music
Industrial Arts I	Principles of Education II
Penmanship	Psychology II
Principles of Education I	School Administration
Psychology I	Sociology
Reading and Speech	Teaching and Observation
Rural School Methods	

**Two-Year Industrial Arts Curriculum**

First Year	Second Year
FALL QUARTER	
English III A	Industrial Arts IV
Industrial Arts I	Teaching
Psychology I	Hygiene and Sanitation
Junior High School Mathematics	Principles of Education
Penmanship	
WINTER QUARTER	
Composition	Industrial Arts V
Industrial Arts II	American Government
Literary Types	Teaching
Principles of Education I	Psychology II
SPRING QUARTER	
Industrial Arts III	Industrial Arts VI
Geography	Penmanship
American History	Sociology
Reading and Speech	School Administration

Industrial Arts I and VII are offered each quarter.

Industrial Arts VIII meets once each week during the college year. All students enrolled in the Industrial Arts Curriculum are required to take this course for the two years.

### Three-Year Industrial Arts Curriculum

Candidates for graduation from the three-year industrial arts curriculum must complete all of the courses indicated for the two-year industrial arts curriculum and, in addition to this, 48 quarter credits, which are to be selected after conference with the head of the department.

### Two-Year Music Curriculum

#### First Year

Appreciation and Form  
Arithmetic  
Composition  
Harmony I  
Harmony II  
Hygiene and Sanitation  
Literary Types  
Music III  
Music IV  
Penmanship  
Principles of Education I  
Psychology I  
Reading and Speech

#### Second Year

American Government  
American History  
Drawing  
Elective in English  
Geography  
History of Music and Appreciation  
Music Administration  
Observation and Teaching  
Principles of Education II  
School Administration  
Sociology

Graduates of this curriculum are recommended to teach music in both grades and high school.

### Three-Year Music Course

Candidates for graduation from the three-year music curriculum must complete all of the courses indicated for the two-year music curriculum and, in addition to this, 48 quarter credits which are to be selected after conference with the head of the department.



## Description of Courses

### AMERICAN GOVERNMENT

**American Government.** This course deals with the purposes and the organization of government. The fundamental principles of American government receive great emphasis. The history of our governmental institutions is considered for the purpose of tracing those changes which have had to do with the extension or curtailment of democracy. An understanding of American government is sought which will be sufficiently thorough to enable the student to play an intelligent part in community, state, and national affairs. Current problems are discussed.

### BIOLOGICAL SCIENCE

Each course of the Biological Sciences is presented so that the student can readily apply the contents to grade teaching. If he selects the biological group and in addition can present physics, chemistry, and physiography, the student will be well prepared to teach general science in consolidated and junior high schools.

**Hygiene-Sanitation.** This course emphasizes the fundamental principles of anatomy, physiology, hygiene, and sanitation. Discussions of these subjects and demonstrations are given to develop habits of right living and to aid the student in teaching the children of the grades.

**Biology I.** The purpose of this course is to make a general survey of the animal and plant kingdoms in such a manner that the students will get a broad and comprehensive view of living things, and an intimate knowledge of those forms which will be most valuable for the teaching of nature study in the grades. Special emphasis is placed upon those groups which the student can readily find near his school such as the insects, birds, mammals, trees, and flowers.

**Biology II.** This course is arranged to acquaint the student with the fundamental laws and theories of life. The subjects of development, reproduction, eugenics, embryology, and environment, together with the results of experimentation on plant and animal breeding are given. The course is especially planned for the students who have a biological background. Students interested in sociology, psychology, and school administration will find the course of much value.

**Biology III.** This course presupposes a knowledge of physics or chemistry, biology, hygiene-sanitation, and geography. The course attempts to review the sciences, establish the aims of science teaching for grades, and develop a technique for the teaching of general science.

### DRAWING

The courses in drawing include a study of the science and relation of colors; free-hand drawing and coloring from nature and still life; the handling of pencil, crayon, charcoal, and water-color; perspective in simple problems;

applied design from nature study; lettering as applied to posters, book pages, covers, etc.; interior decoration in drawing, coloring and design; picture study as applied to school and home; landscape in natural and decorative composition; stenciling; and other forms of practical application. The purpose is to broaden the field of vision through an appreciation of beauty in its broadest sense.

**Drawing for Primary and Intermediate Grades:** In this course, after the teaching of the fundamental principles of the subject, work is given that is especially adapted to the needs of teachers of the first five grades.

**Drawing for Upper Grades:** The first six weeks of this course are devoted to the fundamental principles of the subject and the last six weeks to work adapted to the needs of teachers of the sixth, seventh, and eighth grades.

**Drawing Elective:** This course is offered as an elective to students who have made a grade of "B" or above in one of the preceeding courses in drawing and who wish to make further study of the technique of teaching the subject. Special emphasis is placed upon the correlation of art with the other subjects of the curriculum. Emphasis is also placed upon the appreciation of art, architecture, and picture study, school activities, and the illustration of stories by use of the black-board in mass and decoration designs. This course is offered to prepare students to teach drawing in their own grades with or without expert supervision.

## EDUCATION

### Principles of Education

**Principles of Education I (Kindergarten-Primary)** Prerequisite: Psychology I. This course includes a study of the characteristics of pupils in the lower grades and the selection of material in the various subjects adapted to these grades. The uses of questions, objects, pictures, and stories are emphasized. Typical lessons are planned in each subject and special attention is given to the formation and development of proper habits of thought and conduct.

**Principles of Education I (Intermediate Grades)** Prerequisite: Psychology I. After a survey of the characteristics of children of each age group, those of the pupils of the intermediate grades are considered in detail. School management with subject matter and methods adapted to the intermediate grades are worked out. Typical presentation, text book, drill, and appreciation lessons are planned.

**Principles of Education I (Upper Grades)** Prerequisite: Psychology I. This is a first course in the theory of teaching. Types of school work are observed and studied in order to appropriate foundation principles contributed by biology, psychology, sociology, and the scientific study of education. The topics include the social aim of education, economy of classroom management, selection and organization of subject-matter, laws of learning, and provisions for individual differences of capacity. Typical lessons are planned, and elements of teaching technique are briefly introduced. This course is prerequisite to, and should be taken just before, student teaching. The course is for students who expect to teach in sixth, seventh, or eighth grades or in the junior high school.

**Principles of Education II (Technique of Teaching in Primary Grades)** Prerequisites: Principles of Education I. This course must be taken the same quarter as the first student teaching except by special arrangement

with the Director of the Training Department. This course aims to train teachers to direct various types of learning in grades one to three inclusive. Special emphasis is placed upon project teaching, the socialized recitation, problem-solving, health education, and training for leisure. Lesson plans in various subjects are developed, projects are worked out, and type lessons in primary grades of the Training School are observed.

**Principles of Education II (Technique of Teaching in Intermediate Grades)** Prerequisite: Principles of Education I. This course must be taken the same quarter as the first student teaching except by special arrangement with the Director of the Training Department. The subject matter of arithmetic, geography, history, and other fundamental subjects for grades three, four, five, and six, is outlined. Methods of directing learning in each subject, are developed. Emphasis is put on the importance of understanding social life and the need for developing interests and ideals as well as habits and knowledge. Outside reading and observation of skillful teaching supplement the class work.

**Principles of Education II (Technique of Teaching in Upper Grades)** Prerequisite: Principles of Education I. This course must be taken the same quarter as the first student teaching. The course considers the principal types of learning and corresponding methods of teaching. Emphasis is placed upon understanding social life, problem solving, training for leisure, and for civic-moral efficiency. Typical lessons for pupils in grades six to eight and in the junior high school are planned and judged by students under guidance so that they may be able to recognize degrees of excellence in their own teaching. Demonstration teaching is observed throughout the course.

**Student Teaching** The prerequisites are the courses designated for the first year in the respective curricula, with an average standing of at least C. By special arrangement with the Director of the Training Department, certain of the prerequisites may be waived in the case of normal-training graduates, "elementary-diploma" graduates, and any others having like claims. In addition to observation and teaching required in other methods courses, each candidate for the diploma observes and teaches under supervision approximately one-hundred-twenty hours in the training school and in the city schools of St. Cloud. Daily observation and teaching are supplemented by conferences, group and individual, with the Director and the supervisors.

First year students should choose their courses to be ready for teaching at the beginning of the second year. Thus, a prospective June graduate should be eligible for teaching at the opening of the preceding fall quarter. This will be advantageous in that reports to prospective superintendents and boards of education may then indicate, early in the spring before graduation, the degree of efficiency attained in two quarters of student teaching.

Students out of residence expecting student-teaching assignments after one or more quarters away from the college, should write to the Director of the Training Department at least two months before the time when they wish to be assigned to student teaching.

**Special Note:** Principles of Education II must be carried during the first quarter of teaching by all students except those taking the special curricula in music and in industrial arts.

## Psychology

**Psychology I.** This course offers an introductory study of general psychology. The chief aim of the course is to develop a vocabulary of psychology and a better understanding of the motives and impulses prompting human behaviour. The work consists of text-book study, reference reading, and experiments.

**Psychology II. Educational Psychology.** Prerequisite: Psychology I. This course consists of a study of (1) individual differences, (2) the psychology of learning, and (3) original nature. The problem of individual differences is concerned with the following topics: statistical methods; sex differences; racial differences; mental inheritance; influence of maturity; influence of environment; nature, amount, and distribution of individual differences; correlations between mental traits, mental types; exceptional children with emphasis upon their classification and needs. Information relative to the above topics is drawn from educational psychology texts, school survey reports, and educational periodicals.

The psychology of learning is attacked from two points of view: First, experimentation and second, application. All the experimental work that throws any light on the nature of learning is examined with reference to what can be done to improve educational practice.

Original nature is studied with reference to the laws and principles developed under individual differences and the psychology of learning.

**Psychology III. Educational Tests and Measurements.** The purpose of this course is to acquaint the student with the general field of tests and measurements and to develop a scientific interest and attitude toward the testing movement. Attention is centered upon:—the measurement of intelligence and the measurement of achievement. Students secure practical experience in giving and scoring standardized tests. The tests are given by members of the class to pupils in the various grades. The papers are scored and interpreted by the class. Illustrative tests pertaining to each of the elementary school subjects are studied in detail. The following topics receive considerable emphasis:—How tests can be used to improve classroom instruction; reveal necessary remedial work; provide measures of progress; stimulate pupil interest; supply means of classification. The abuse as well as the use of standardized tests is emphasized.

## Lower-Primary Education

**Lower-Primary Education.** This course includes (1) a brief survey of the modern agencies for teaching children, (2) a study of the characteristics of children from two to seven years with emphasis upon the play interests of childhood and the formation of hygiene habits, (3) a study of the fundamental Froebelian principles and their application to present Kindergarten practice, (4) an intensive study of the principles of the selection and use of materials in the education of young children, (5) a study of the kindergarten curriculum and of the first grade curriculum, with practice in making time programs and organizing subject matter and materials in tentative outlines. Opportunity is provided for supervised observation with participation in the kindergarten of the training school.

### **Rural-School Methods**

The purpose of this course is two-fold: (1) to develop in the student the right attitude toward rural-life conditions and problems; (2) to prepare him to organize and to teach a rural school.

Reading from a selected list of books is required. Special attention is given to such problems as school organization and management; use, classification, and selection of library books; program making; school sanitation and hygiene; school activities; and parliamentary practice through the organization of a Rural-Life Club. Some time is spent in observation of teaching.

### **School Administration**

The application of educational science to the administration of the school is the keynote of this course. Emphasis is put on scientific organization and school discipline. Under the first heading appear the topics:—the age-progress table, the administrator's use of standard tests, flexible school organization, the daily program, school marks, attendance, records, and reports. Under the heading of school discipline appear the following topics:—rules and punishments, habit formation, student participation in school control, school morale, and extra-curricular activities. Other topics studied are:—the State School Laws, special problems of the teacher, and the principles underlying modern public school administration in the United States.

## **ENGLISH LANGUAGE AND LITERATURE**

### **Required of First-Year Students**

Composition  
English III

Literary Types  
Reading and Speech

### **Required of Second-Year Students**

Children's Literature

**Composition.** The purpose of this course is to enable the student to use clear and effective oral and written English. To this end, exposition and such pieces of narrative as are constantly required in classroom explanations, are emphasized.

**English III, A and B,** are divisions of a differentiated course in English.

Students who feel well grounded in the essentials of English grammar through (1) teaching experience in the upper grades or (2) a high-school course in grammar, should register for English III A-1 or B-1. Students also who made a superior or scholastic record in high school are advised to register for A-I or B-I. These special courses are offered in the fall and winter terms only.

All other students should register for A-II or B-II.

**A.** This course is required of students who are specializing in lower-grade work. It has for its aim (1) to give students sentence mastery with the principles underlying correct speech; (2) to organize language work for the lower grades. Such topics are considered as (a) aims in oral and written language; (b) developing the "sentence sense;" (c) children's speech errors and correction drills; (d) standards to measure the composition of children. The work is illustrated by demonstration classes in Riverview School.



**B.** This course is required of all who are specializing in intermediate or upper-grade work. The course includes a study of the sentence:—classifications, essential parts, modifiers of essential parts, connectives, inflections, and uses. Great emphasis is put upon practical applications of the subject matter.

**Reading and Speech for Lower Grades.** This course deals with the principles and methods involved in the teaching of reading in the first three grades, and emphasizes the aims to be attained in each grade. It includes a study of such topics as the prerequisites to learning to read; pre-primer reading; incidental reading; use and choice of reading texts; phonics; seat work, and lesson planning; oral and silent reading.

**Reading and Speech for Intermediate Grades.** The reading problems of grades four, five, and six are included in this course. Oral reading situations, silent reading and study habits, comprehension and speed, character and extent of reading matter, individual differences, remedial work, word study, and lesson planning are among the topics studied.

**Reading and Speech for Upper Grades.** This course presents the reading problems peculiar to grades seven and eight and emphasizes methods of procedure in their solution.

**English IV. Literary Types.** This course includes the reading of essays, short stories, novels, and poetry with the purpose of developing proper standards of appreciation of the best literary types.

**English V. Literature for Children.** (The course is differentiated into primary, intermediate, and upper grade.) The purpose of this course is to familiarize the student with the best literature for children, to teach him discrimination in the selection of material, and to acquaint him with the best methods of presentation.

The course includes a study of the various types of books written for children, such as fables, fairy and folk stories, myths, legends, Bible stories, national hero tales, biography, history, travel, poetry, and fiction. The best books in these fields are available in the library.

Practice is given in the introduction of books to children, in story-telling, in story-writing, in dramatization, in verse-writing, and in the teaching of appropriate poems.

**English VI. A. Shakespeare:** An intensive study of several of Shakespeare's plays. Emphasis is laid on interpretation of thought, dramatic construction, appreciation of poetry, and Shakespeare's understanding of human nature. Elective.

**English VII. English and American Essays.** This course includes a study of Emerson's American Scholar, Compensation, and Self-Reliance; Carlyle's Essay on Burns, and Hero-Worship; Ruskin's Sesame and Lillies, and Modern Painters; Lamb's Essays of Elia. Reports are given by students upon work of prominent writers of to-day. Elective.

**English VIII.** A critical study of Browning (six weeks). Tennyson (two weeks). A brief survey of the romantic school of poetry from Thompson to Wordsworth. Topics and discussion relating to Arnold, Morris, Rossetti, Kipling, Noyes, Brooke, and Masfield. Elective.

## GEOGRAPHY

**Geography (Lower Grades).** Students preparing to teach in the lower grades need a thorough understanding of the principles of geography; hence, the first six weeks of the course are given to general geography. Throughout the course the interests and needs of the children of the lower grades are kept in the foreground and these control the selection of materials and the methods of presentation.

**Geography (Intermediate and Upper Grades).** The purpose of the course is to give an understanding of the principles of geography as a basis for better teaching of the subject in the intermediate and upper grades; hence, the first half of the quarter is given to what may be called general geography. The course also gives training in interpreting geographic situations. The third purpose of the course is to create such an insight into geography that students will appreciate how closely geographic principles are related to human affairs.

In both of these courses in geography time is given to a consideration of courses of study. Opportunity is given for examining good textbooks, books of method, and supplementary and reference material, including pictures, magazines, and industrial exhibits.

**Physiography.** Prerequisite: Geography. The purposes of the course are: (1) to give the student a knowledge of the fundamental facts necessary for the teaching of geography; (2) to develop an appreciation of physical features. The course includes: (1) a study of the laws which govern the formation of the various types of physical form; (2) a regional study of the United States; (3) the reading of topographical maps; (4) a study of common rocks and minerals.

A number of field trips are made during the quarter.

## HISTORY AND SOCIOLOGY

**American History.** A differentiated course required of high-school graduates. The course treats American history and the development of American government. The purpose of the course is to develop in the student as a prospective teacher the power of determining the relative significance of the various factors to be emphasized in the teaching of history. To accomplish this the course aims to give a clearer understanding of the forces which have brought it about that American history, while an integral part of world history, has followed a distinctly unique development. After a brief chronological review of the chief events in American history, the treatment follows a topical study of some of the greater problems of our history, such as the westward movements, territorial expansion, party development, slavery and the negro problem, civil service appointments, national internal improvements, and the tariff. The fundamental principles of American government are emphasized in connection with the account of their appearance in our history. The student is introduced to the best historical literature both in the sources and in secondary works.

**History for the Lower Grades.** This course is intended to give students who are planning to teach in the primary or intermediate grades a basis of subject matter for the teaching of history in these grades. After a general survey of

the prehistoric period, the course undertakes to carry the student through the chief movement of general history to the beginning of the modern period. Special emphasis is placed upon the examination and listing of appropriate history material for use in the lower grades. Elective.

**Recent American History.** This course deals primarily with the political and economic development of the United States since 1865, special emphasis being placed on the period from 1900 to the present time. It includes also, a study of our foreign relations since 1823. Current periodicals are extensively used. Elective.

**European History, 1648-1815.** This course purposes, first, to acquaint the student with the political, social, and economic developments of the 17th and 18th centuries which made the French Revolution inevitable; second, to trace the history of the Revolution, and its influence in bringing about a changed Europe in the 19th century. Elective.

**European History, 1815 to Present Time.** This course deals with the growth of democracy, nationalism, and imperialism during the 19th century, and attempts to discover the relationship between these movements and the World War. Attention is given to the efforts before and since the World War to secure world peace. Current periodicals are extensively used. Elective.

## SOCIOLOGY

The course in sociology is a study of the origin, development, structure, and functioning of society. Its purpose is to develop an understanding of the operation of the normal society, to foster a scientific mindedness toward the study of social problems, and to present a constructive philosophy of social life. The course is divided into two parts, i. e., The Normal Society and Constructing the Normal Society. Topics considered are: The scope of sociology, the development of man, the development of society, the social nature of man, socialization, social progress, normal family life, social heredity, morality, science and scientific method, the elimination of the pathological in society.

## INDUSTRIAL ARTS

**Industrial Arts I.** The purpose of this course is to meet the needs of the rural and the lower grade teacher. The work deals with simple bookbinding, lettering, design, furniture in thin wood and cardboard, interior decoration, and costume design. Most of the projects are worked out with the sand table, the play house, and with dolls. Drawing, word study, arithmetic, geography, and history are applied to the projects so that the child in the grades will have a better understanding of the industrial life of the past and present.

**Industrial Arts II.** The purpose of this course is to give the teacher an understanding of the work in industrial arts for pupils of the lower grades of the elementary school. A study is made of primitive and modern industrial life dealing with the most common out-of-door and indoor trades. Industrial history and geography are correlated with the projects. The course emphasizes the building of a social background so that the pupil will be better able to enjoy and express himself.



**Industrial Arts III.** This course is divided into two parts. The work of the first six weeks deals with forestry and the woodworking industries. A study is made of tools, machines, and processes. An outline for a course of study is made for the upper grades and for the high school. The last six weeks of the course deals with pattern making, moulding, casting, sheetmetal, and electrical work. Shop management and vocational guidance are given careful consideration.

**Industrial Arts IV.** This course deals with free hand drawing as applied to every day uses in the trades. The history of lettering is studied to show its relation to drawing. The simple laws which govern outline, shadows, and color are worked out in problems that fit school and trade uses.

**Industrial Arts V.** This course applies modern drafting room practice to junior and senior high school courses in mechanical drawing. The student is taught to supplement word descriptions with adequate drawings and sketches. Students furnish their own supplies.

**Industrial Arts VI.** Architecture, as taught in the modern public schools, includes home planning and building. Building the home to meet individual needs, how to assist the architect, builder, plumber, and the electrician are given careful consideration.

**Industrial Arts VII.** A brief study of the printing industries is taken up in connection with the management and printing of a college paper. Book-binding, illustrating, and job work are studied as practical projects.

**Industrial Arts VIII.** The purpose of this course is to give a general working knowledge of the best methods in visual education. The educational value of the camera, the lantern slide, the motion picture, and the school poster are recognized by the modern teacher. Students are required to furnish their own cameras and supplies.

**Industrial Arts IX.** This course deals with interior decorating and landscape gardening. Types of families and individuals are studied and color schemes are worked out that will harmonize with interior decorations and furnishings. In landscape, the location of the house and how to make it attractive by the use of trees, shrubs, vines, plants, flowers, walks, and gardens are studied and worked out in miniature.

**Industrial Arts X.** This course is a study of the fine and industrial arts as they apply to modern commercial life. The following furnish material for study and projects: architecture, music, the dance, drama, painting, sculpture, literature. Each student is required to prepare and give an illustrated talk on one of the arts studied.

## MATHEMATICS

**Arithmetic Course A.** This course is required of those who are preparing to teach in the lower grades. The course includes a study of the reading and writing of numbers, the four fundamental operations with integers, denominate numbers, common and decimal fractions, measurements and estimates, and simple mensuration. An intensive study is made of the best professional

books and references on the topics of the course. A study is made of the educational aims of arithmetic and of present day demands and tendencies. Several of the best state and city courses in arithmetic and standard text-books in the subject are studied.

**Course B.** This course is required of students who are working for first-class certificates. The course includes a consideration of the most important topics in arithmetic for all of the grades. The professional aspects of the subject are emphasized. The material and methods in this course are adapted to rural school needs.

**Course C.** This course is required of those who are preparing to teach in the intermediate or upper-grades. The course includes the material of Course A that is considered necessary for the work of the upper grades. It also includes the study of decimal fractions, percentage and its applications, mensuration, and square root. The mathematics courses in typical junior high schools are studied.

In all of the courses in arithmetic, emphasis is placed upon the proper presentation of new material, drills, and devices that aid in securing accuracy and speed in computation, and methods that aid the teacher to secure good results in the teaching of the subject.

**Geometry III. Solid Geometry.** The work as presented in a standard text is followed. Practical applications are emphasized. Elective.

**College Algebra.** The topics included are quadratics, progressions, binomial theorem, permutations and combinations, determinants, and theory of equations. Elective.

**Trigonometry.** This course is given for those who expect to teach mathematics in junior high schools. Elective.

**Junior High-School Mathematics.** This course is a study of the plan now in common use in many of the best junior high schools, which provides for arithmetic and intuitional geometry in the first year, algebra and arithmetic in the second year, and more formal algebra and geometry in the third year. Opportunity is given for a review of arithmetic, algebra, and geometry and an intensive study is made of the new subject matter and its proper place in the course. There is a demand for well prepared teachers of Junior high-school mathematics.

## MUSIC

Graduates of the special music course are qualified to teach the subject not only in the grades but in the high schools. Graduates of this course are in great demand. Glee clubs, quartets, and choruses are organized each year.

**Music I.** This course includes sight reading; ear training; training in enunciation, tone placing and rythm in connection with the teaching of rote songs.

**Music III.** This course includes methods in the teaching of rote songs; sight reading; theory and appreciation through the third grade; ear training. Training in the care of the child voice; preparation of lesson plans; teaching of illustrative lessons.

**Music IV.** This course includes ear training in tone combinations; enunciation and tone placing; song interpretation; methods of sight reading and appreciation through the intermediate and upper grades, including junior high school; preparation of lesson plans; teaching illustrative lessons.

## **Courses For Special Diploma in Music**

**Music V.** This course includes conducting; outlining of work; preparation and conducting of school entertainments; choice and organization of material; organization of glee clubs, orchestras, and choruses; training in voice testing and the care of the adolescent voice through mutation.

**Music VI.** Methods in instruction of piano classes in the grades.

**Piano Class Lessons.** One lesson and two hours of practice per week for one year are required of students taking special music course. Class lessons are free to such students.

**Appreciation I.** This course includes a study of the principles of form in its development from the folk song to the symphony; drill in the discrimination of the tone quality of instruments and of the tone color produced by combinations of instruments.

**Appreciation II.** Prerequisite: History of Music and Appreciation I. This course emphasizes content in music as influenced by the personal characteristics and environment of a composer, by his nationality, and by the period in which he lived. Special study is made of the lives and works of Haydn, Mozart, Beethoven, Schubert, Mendelssohn, Chopin, Tchaikowski, DeBussy, and Strauss.

**Harmony II.** This course includes a study of major and minor scale structures; three-tone chord formation and inversions; intervals and inversions; cadences; transpositions; simple melody formation; harmonic and non-harmonic, ornamental tones; four-part harmony involving principal triads; analysis; ear training in the natural tendencies of active to rest tones, in major and minor chords and their inversions, in melodies and two-voiced harmony. Keyboard work is combined with the study of scales, intervals, chords, and cadences.

**Harmony II and Orchestration.** Prerequisites: Appreciation I and Harmony I. This course includes a study of harmonic progression away from and towards a key; relation of triads within a key; seventh chord; modulation transposition continued; chord selection; voice, progression; elementary composition; analysis; ear training in chords and inversions; dominant and diminished seventh chords, inversions, and resolutions; resolutions of dissonant intervals; melodies; two-voiced harmony; keyboard work made essential in modulation, transposition, and resolution of seventh chords.

Orchestration includes a study of the instruments of the orchestra as to register and tone quality; a study of orchestral scores and the orchestration of simple selection.

**History of Music.** This course includes a study of the music of primitive nations; the rise and development of church music and opera and oratorio; of the development of instruments; of classicism and romanticism in music; and of the development of modern musical forms.

**Voice Class Lessons.** One lesson and two hours of practice per week for one year is required of students taking the special music course.

## PENMANSHIP

**Penmanship.** This course includes instruction in the mechanics and pedagogy of muscular movement writing adapted to all school grades and in methods of supervision adapted to city and rural schools. The course consists of writing lessons, lectures, model lessons, blackboard demonstrations and discussions, the purposes of which are to develop proper muscular movement, writing ability, and a fundamental knowledge of the pedagogic development of penmanship as a subject throughout all school grades.

## PHYSICAL EDUCATION

The department of physical education provides instruction and means for the improvement and preservation of health and the harmonious development of the body.

A careful examination of every student is made at the beginning of each college year and at such intervals as seem necessary. Personal advice and suggestions regarding habits of life, recreation, study, and exercises best suited to individual development are given by the special teachers.

Violent exercise is discouraged, but students are required to take rational exercise for the proper development of the body and for correcting improper postures in standing, sitting, and walking.

Every student in the college, unless excused, is required to take the work of this department.

Each student is required to have a gymnasium suit. The young women use white middie blouses and black bloomers. Black gymnasium shoes or slippers with rubber soles are required.

The regulation gymnasium bloomers may be purchased at the business office of the college for \$1.75.

**Playground Methods.** This course includes a study of the play instinct; the nature and function of play; community social conditions; the playground movement; practical conduct of playgrounds; the organization and administration of playground; hygiene and first aid. Reference reading is required and special reports are given.

Practical work, including plays and games, folk dancing, and apparatus work, is given on the playground.

The college has an enviable record for the excellence of its athletic teams. For a number of years teams of the college have won a large majority of the games played.

The athletic department is in charge of well trained teachers of wide reputation.

## Athletic Coaching

**(This course is offered in the fall quarter only)**

The course includes:

**Football.** The theory and art of coaching football are studied to show the weak and strong points of various styles of offense and defense. Special stress is put on generalship, signal systems, and rules.

The fundamentals of football are studied from the point of view of the coach. A study is made of the systems taught by various coaches. Special study is made of the forward pass, trick plays, and the defense to meet these plays.

**Basket Ball.** The game is taken up from the point of view of the coach. The theory of coaching, handling of men, and different styles of offense and defense used by the leading coaches are studied.

Fundamentals of the game, such as passing, goal throwing, dribbling, turns, stops, and team play are studied.

**Baseball.** Emphasis is placed on the details of batting, baserunning, fielding, team rules, signals, and rules.

**Field and Track Sports.** Instruction is given in the details of all the standard track and field sports.

## **To Superintendent, Principals, and School Directors**

The success of our public schools depends to a large degree upon the ability and the skill of the teachers. The friends of education are requested to recommend for admission to the college only those who give promise of developing into successful teachers.

The college attempts to train its students so that they are properly qualified for teaching positions for which they are recommended. The college does not recommend any teacher for a position unless the candidate is thought to be qualified for the position. Those who wish to secure teachers should state full details in regard to the type of position which is to be filled.

All departments of the college are open to visitors, and men and women are urged to visit the college and by their constructive criticism, suggestions, and cooperation, aid us in supplying the schools of the state with better trained teachers.

## **Summer Session 1925** **JUNE 10 to JULY 22**

The courses of the summer session are planned to meet the needs of those who desire:

1. Professional or academic credits for certificates or renewals.
2. The regular or special diploma.
3. Better preparation for principalships, normal training, and junior high-school positions, and for departmental work.
4. Improvement in general scholarship and in teaching skill.

### **Scope of Courses**

Methods courses for certificate holders are offered in practically every elementary school subject.

Numerous classes in required subjects are provided and elective courses are offered for those who are candidates for diplomas.

Experienced teachers who wish more advanced preparation will find many classes of unusual interest and value such as educational psychology; primary, intermediate, and advanced principles of education; primary, inter-



mediate, and advanced reading and speech; rural school methods and administration; sociology; junior high-school mathematics; and special courses for supervisors in science, penmanship, and industrial arts.

Courses will be offered which will apply toward the teachers college diploma, or towards certificates for teachers in lieu of examinations. High-school local standings in certificate subjects, presented by students who have successfully pursued at least one year of teachers college work, are certified for transfer without examination to first and second class certificates.

A student may carry eight quarter credits during the six weeks of the summer session in any teachers college of Minnesota.

## **Requirements for Admission**

### **The Two-Year Curricula**

High-school graduates are admitted without examination upon the presentation of diplomas and certified statements of the courses completed in approved high schools. These records should be presented at the office of the registrar on the opening day.

## **Professional Requirements for Certificates**

Each applicant for a first-class common school certificate must present, in addition to the required standings in the academic subjects, evidence of at least twelve weeks of successful state teachers college work in four or more professional or method subjects. This work is the equivalent of sixteen quarter credits.

The student during the twelve weeks of required professional study must earn the sixteen quarter credits within the subject groups listed below: three subjects must be chosen from Group I; and one subject from either Group I or Group II. Most of these courses are offered during the summer session.

### **GROUP I**

Arithmetic  
Composition and Language  
Geography  
Grammar  
History and Citizenship  
Hygiene and Sanitation  
Primary Methods

Primary Handwork  
Reading and Speech  
Rural Methods and Administration

### **GROUP II**

Drawing  
Library Methods  
Music  
Playground Methods

## **Renewal of Certificates**

The renewal of a first-class certificate (except the first renewal of a high-school normal training certificate and the first renewal of a certificate received because of credits earned wholly in a teachers college) requires the completion of two additional professional credits in a teachers college, in addition to the presentation of four reading circle credits and evidence of two years of successful experience under the certificate.

A special circular on Common School Certificates has been issued by the Minnesota state teachers colleges and will be mailed in response to a request. Candidates for certificates should take special note of the regulations.

Annual State Examination for certificates will be held in St. Cloud.

### **Registration and Class Sessions**

Students will register on Tuesday, June 10 between 2 p. m. and 5 p. m. and on Wednesday, June 11, between 8 a. m. and noon. Students cannot enroll for credit after Thursday, June 12, unless admitted by special prearrangement with the President.

A special fee of \$2 will be charged for enrollment after Wednesday, June 11. Sessions will be held five days each week.

### **Student Teaching**

The Riverview School, the college training school, will be in session during the summer session. This will make possible a limited amount of student teaching. To secure such opportunity, it will be necessary for students to apply not later than May 15. Applications will be honored in the order in which they are received until the limit is reached. Students having first claim on student teaching assignments are those who are most nearly ready for graduation.

Prospective student teachers should read the regulations relative to student teaching on page 30 of this catalog.

### **Expenses of Attendance**

Tuition is free to all students, who sign a declaration of intention to teach for two years in the public schools of this state. Others pay cash tuition of five dollars for the summer session, in addition to the student fee.

A charge of four dollars and fifty cents, known as the term fee, is required of each student, and covers: (1) the free use of all text-books required in class work, the use of the library, laboratories, gymnasium, and general equipment of the school; (2) a ticket of admission to lectures, concerts, and plays.

### **Board and Room**

About two hundred and fifty young women are accommodated at Lawrence Hall and at Shoemaker Hall at the rate of \$5.75 a week. The dormitories are well equipped and beautifully located and provide excellent accommodations. Bills for board and room are payable for the entire session before Thursday of the first week.

A money order for \$5 must accompany each request for dormitory reservation. This deposit is returned before the close of the summer session.

Room rent in private homes varies from \$10 to \$20 a month, two in a room. Board costs from \$5 to \$5.50 a week in private homes.

A list of approved boarding and rooming places will be found at the college. Students should not engage board and room at places not on the approved list. A faculty committee assists students to secure desirable accommodations for board and room.

### Special Courses

Many teachers will be interested in the special courses which will be offered during the summer session. Among these courses are the following:

**Playground Methods.** This course will emphasize the modern theories of play and its physical, mental, moral, and social significance. A large number of games suitable for various grades will be taught. The practice will take place on the playgrounds.

**Penmanship.** A special course will be offered in the Palmer system of penmanship.

**Children's Literature.** Courses of unusual interest and value for teachers of all grades will be offered in children's literature and story telling.

**Junior High-School Mathematics.** There has been an increasing demand for a special course in the mathematics of the junior high school and this will be offered.

**Library Organization and Methods.** This course will be of unusual value to the rural school teacher.

### Courses of Special Interest to Rural School Teachers and Supervisors

The special attention of rural-school teachers is asked to the following courses:

Rural Supervision	Story Telling and Children's Literature
Rural Administration	Primary, Intermediate, and Advanced Principles
Handwork for Lower Grades	Special Methods in Arithmetic, Geography, Grammar, History, and Reading
Playground Activities	
Library Course	

### Special Features

Provisions have been made for special programs of unusual interest and value including lectures, musicals, plays, hikes, and other forms of entertainment. Lecturers of national reputation will give addresses during the session. There will be social activities for the enjoyment of the students. The gymnasium, the tennis courts, the lakes, and the beautiful walks offer unusual opportunity for recreation. The industrial plants of the city may be visited.

### Subjects Offered During Summer Session, 1925

American Government	Manual Training
Arithmetic	Penmanship (Palmer)
Biology	*Playground Methods
Children's Literature	Principles of Education
Composition	Primary Handwork
Geography	Printing
Grammar	Psychology
History	Reading and Speech
Hygiene and Sanitation	Rural-School Methods
Junior High-School Mathematics	School Administration
*Library Methods	Sociology
Literary Types	

\*Classes starred count a half credit towards the diploma.

## Catalogue of Students for 1925-1926

### SPECIAL STUDENTS

Bergstrom, Alvina Anna, Carver  
Campbell, Laura Agnes, St. Cloud  
Falk, Anna Victoria, Redwood Falls  
Harris, Ruth F., St. Cloud  
Korb, Beulah Franke, Buffalo  
McCossan, Esther Ella, Minneapolis  
Nelson, Ethel Violetta, Newport

Nelson, Lloyd William, Alexandria  
Oberg, Mabel Malvina, Deerwood  
Peterson, Luella Ruth, Litchfield  
Reck, Gertrude E., Cavalier, N. D.  
Scholz, Aloysius, St. Cloud  
Steichen, Kathryn Reginae, Adams  
Stillwell, Kenneth Fredric, Little Falls

### INDUSTRIAL ARTS

Amundson, Hilmer Richard, Warren  
Anderson, Carl John, Barnum  
Anderson, Cecil Ervin, St. Cloud  
Anderson, Neal M., St. Cloud  
Anderson, Ordell Hartford, St. Cloud  
Bailey, Robert Edwin, Long Prairie  
Benson, Conwell, St. Cloud  
Blaha, Roland William, Wadena  
Boos, Fred Lewis, St. Cloud  
Bostrom, Donald N., St. Cloud  
Boyer, Alexander Raymond, Beltrami  
Brandley, Donald Martin, St. Cloud  
Brockemeir, William, Alexandria  
Brynildsen, Benjamin, Minneapolis  
Carpenter, Frank H., Minneapolis  
Coons, Carol Winfield, Sauk Centre  
Deneen, Raymond Paul, St. Cloud  
Dodds, James Merritt, Wadena  
Eide, John Leonard, Minneapolis  
Erickson, Arvie Lawrence, St. Cloud  
Erickson, Clinton Joel, Warren  
Grauman, Harold H., Long Prairie  
Hammar, Marvin W., Alexandria  
Hansen, John Elis, St. Cloud  
Hanson, Lee, Cambridge  
Heegard, George Ernst, Starbuck  
Hendrickson, Carl Clifford, Karlstad  
Henning, Paul Harold, St. Cloud  
Hill, Alton David, St. Cloud  
Hill, Elmo Henry, Paynesville  
Johnson, Lawrence Carl, Wayzata

Johnson, Lisle Esmond, Alexandria  
Kempf, Mahlon William, Staples  
Kind, Daniel Edward, St. Cloud  
Latterell, Milo Addison, Paynesville  
Lembke, Herbert, Sauk Centre  
Lenarz, Albert Joseph, Albany  
Lindstrand, Arnold G., Warren  
McDonald, Errol James, St. Cloud  
Machula, Walter August, Sauk Rapids  
Martini, John Melvin, St. Cloud  
Mesenburg, Robert Henry, St. Cloud  
Nehring, Kenneth, Paynesville  
Nickey, David Fordice, St. Cloud  
Nord, Raymond Vernon, Hasty  
Palmer, Paul Rueben, Sauk Centre  
Paur, Theodore Albin, Waubun  
Peterson, Carl Victor, Little Falls  
Peterson, Edward Theodore, Willmar  
Powers, Richard, Mildred, Mont.  
Rolien, Edner Bertrum, Starbuck  
Rosenberger, Ralph Henry, St. Cloud  
Schneider, Andrew Mike, Albany  
Sorenson, Marcus, Brainerd  
Steffenson, Rudolf, Anoka  
Stevens, William Harold, Wadena  
Then, John Aloys, Hastings  
Weihs, Norbert Eugene, St. Cloud  
Westerberg, Bror Gusta, St. Cloud  
Whitesell, Charles, Browerville  
Wood, Quentin Clair, Grey Eagle

### MUSIC

Anderson, Raymond Albert, Princeton  
Booker, Emily, Pembina, N. D.  
Carlson, Adah Zetella, Barnum  
Coffey, Ellen Louise, Sioux Falls, S. D.  
Darr, Dorothy Eleanor, Minneapolis  
Dudley, Grace Mellville, St. Cloud  
Erickson, Vivian Rose, St. Cloud  
Ferguson, Odessa Mae, Breckenridge  
Flory, Marcella Jeanette, St. Cloud  
Fry, Verna Muriel, St. Cloud  
Frye, Iona Ruth, Osakis

Fulford, Evelyn, Verndale  
Gale, Mary Alice, St. Cloud  
Halverson, Clara Bertine, Milaca  
Hanson, Sylvia Mildred, Wheaton  
Hauck, Isabel Viola, St. Cloud  
Kemski, Martha Louise, Waconia  
Kimmel, Constance, Nashwauk  
King, Berenice Aileen, Brainerd  
Knapp, Jessie Vida, Paynesville  
Krause, Juanita V., Burtrum  
Linnemann, Edmund L., St. Joseph

Lyon, Irene, Two Harbors  
 McCauley, Alice Ray, Mabridge, S. D.  
 Merrick, Reva Elverna, Crosby  
 Nelson, Carol Hennrietta, Benson  
 Olson, Ester Helen, Litchfield

Peterson, Philip Lawrence, St. Cloud  
 Roddis, Helen Gertrude, Osakis  
 Schley, Alice Elizabeth, St. Cloud  
 Wolter, Olivia Leola, Melrose

## SENIOR CLASS

### Two-Year Course

Aasen, Magdalene Louise, Cyrus  
 Adams, Leasa, St. Paul  
 Ahlfors, Grace Marie, Eveleth  
 Ahlquist, Mabel Adellea, South Haven  
 Albrecht, Helen Leon, Morgan  
 Alexander, Delsa Genevieve, Brooten  
 Allen, Alice May, Sauk Centre  
 Anderson, Alice Anabel, Elk River  
 Anderson, Alice Marcella, Grove City  
 Anderson, Edna Charlotte, Barnum  
 Anderson, Edna Lucille, Minneapolis  
 Anderson, Esther Marie, Alexandria  
 Anderson, Grace, Marine-on-St. Croix  
 Anderson, Helen N., Granada  
 Anderson, Lillian, North Branch  
 Anderson, Lillian Margaret, Fairmont  
 Anderson, Lilly Annabelle, Willmar  
 Anderson, Lucile Helen, Elk River  
 Anderson, Margie Minerva, Stewart  
 Anderson, Merle Lucile, Glenwood  
 Anderson, Olive Lucille, Willmar  
 Anderson, Ruth Annette, Alexandria  
 Anderson, Walter A., Alexandria  
 Anding, Patricia Myrtle, Lake City  
 Anfinson, Joseph Selmer, Milaca  
 Anvid, Anna Margaret, Blackduck  
 Archer, Elaine (Mrs.), Minneapolis  
 Archer, Ethel Fern, Wadena  
 Ashbaugh, Lester Franklin, Murdock  
 Asleson, Rose Adele, Redwood Falls  
 Babcock, Bertie, Zimmerman  
 Baker, Irene Mae, Marietta  
 Barsness, Oliver Helmer, Cyrus  
 Bartnof, Rose, Minneapolis  
 Baskerville, Blanche, Minneapolis  
 Batterberry, Leone M., New London  
 Becklin, Ruth Medora, Cambridge  
 Beebe, Bertha Maude, St. Paul  
 Bergstrom, Mildred, Crookston  
 Bertelson, Bertha V., Litchfield  
 Bertram, Julia Grace, Cloquet  
 Betcher, Irma Sophia, Minneapolis  
 Bey, Cora Ottelia, Minneapolis  
 Billups, Anna Mae, Stickney, S. D.  
 Bisel, Chester Arnold, Burtrum  
 Bisel, Ruth Carmen, Burtrum  
 Bixby, Ethel Maude, Kimball  
 Blaha, Marion Joy, Wadena  
 Block, Erna Hertha, St. Cloud  
 Boody, Helen Margaret, Minneapolis  
 Booker, Cecil Edmund, Bain

Borton, Elva Constance, Montevideo  
 Bostrom, Olga Rebecca, Sauk Rapids  
 Bottge, Ada Harriet, Correll  
 Bourgeois, Irene Mary, Anoka  
 Bowden, Blanche Hazel, Herman  
 Bowers, Louise Lorraine, Waite Park  
 Bradley, Hettie May, Little Falls  
 Bratberg, Agnes, Minneapolis  
 Bremer, Sylvia Loretta, Waverly  
 Broden, Evelyn Clarice, Crookston  
 Brooks, Bernice Eleanor, Elk River  
 Brown, Helen Adelaide, St. Cloud  
 Bruns, Sadie Luella (Mrs.), Raymond  
 Bruzek, Louise E., New Prague  
 Bryant, Marvelle Marjory, Monticello  
 Buchanan, Winifred Phoebe, Perham  
 Buckman, Frances, Annandale  
 Buckmaster, Maria, Monticello  
 Buethe, Lucylle Edith, Paynesville  
 Bullard, Dorothy, Villard  
 Burgdorf, Clarence Giles, White Bear  
 Burgoon, Ruth Marguerite, Paton, I.  
 Bye, Mildred Elvira, Fergus Falls  
 Cady, Luella Alice, Pelican Rapids  
 Campbell, Cecilia, Watertown  
 Canniff, Fleda Mae, Brainerd  
 Carlson, Alma Carmen, St. Cloud  
 Carlson, Clarice Theresa, Morris  
 Carlson, Gertrude Christine, Stephen  
 Carlson, Ruth Viola, Warba  
 Carnes, Mabel Marguerite, Royalton  
 Carter, Sylvia Edith, St. Cloud  
 Cater, Edna Mildred, St. Cloud  
 Chalgren, Dorothy M., (Mrs.), Mpls  
 Chapman, Dorothy Jane, Chicago, Ill.  
 Chappell, Lucille, Parkers Prairie  
 Chase, Cynthia, Round Prairie  
 Chisholm, Anna Marian, Paynesville  
 Chisholm, Doris, Paynesville  
 Christensen, Dagmar, Robbinsdale  
 Christensen, Isabel, Clarkfield  
 Chubb, Katherine Goodrich, Mpls.  
 Claesson, Lillie Elvira, Winthrop  
 Clark, Dorothy Anna, Portland, Ore.  
 Clayton, Bernice, Minneapolis  
 Cockburn, Isabel Mary, Villard  
 Cockburn, Margaret Jane, Villard  
 Coleman, Laila Inez, Elbow Lake  
 Collins, Anne Elexia, Monticello  
 Conger, Ben F., Becker  
 Cramb, Lois Leland, Milaca



Crouley, Hazel Katherine, Litchfield  
 Cudd, Mae Florence, Foxhome  
 Cullen, Philip James, Waverly  
 Cyrus, Leonard A., St. Cloud  
 Dahlgren, Raymond, Cambridge  
 Dallman, Carroll Mae, Elk River  
 Dalquist, Hildur, Randall  
 Danielson, Amelia, Cyrus  
 Danielson, Carl Emil, Cyrus  
 Danielson, Judith, Dunnell  
 David, Delma Rose, St. Cloud  
 Davies, Martha Emily, Alexandria  
 De Lay, Abbie Miner, St. Cloud  
 De Lay, Lucille Romaine, St. Cloud  
 De Long, Dudley, Hutchinson  
 De Rocher, Edith Valeria, Brainerd  
 Deal, Hazel Josephine, Wheaton  
 Dempsey, Winnifred, Windom  
 Dennis, Dorothy Clay, Minneapolis  
 Dettler, Olga Augusta, Swanville  
 Donohue, Florence, St. Cloud  
 Donohue, Mary Grace, St. Cloud  
 Dorenkemper, Helen, Waubun  
 Dreis, Agnes Josephine, Paynesville  
 Dresser, Bernice Ella, Wadena  
 Duhn, Clara Jensine, Vining  
 Dummert, Winifred, St. Paul  
 Dunn, Winnifred Mary, Minneapolis  
 Dunton, Reva Ann, Annandale  
 Dyer, May (Mrs.), Kansas City, Mo.  
 Dynan, Anna Catherine, Annandale  
 Ebner, Edna Cecila, Elk River.  
 Edgren, Ethel Mae, Willmar  
 Effinger, Florence, Wayzata  
 Eich, Crecentia, Little Falls  
 Eklund, Carl Richard, Stanchfield  
 Elletson, Gladys Harriet, Foley  
 Ellis, Clara B., St. Cloud  
 Ellis, Margaret Ruth, Wadena  
 Emilson, Teresa Gertrude, Brainerd  
 Erickson, Edna Margaret, Donnelly  
 Ernster, Helen Lucinda, Wadena  
 Ertsgaard, Ruth Naomi, Savage  
 Falk, Olga, Willmar  
 Falkingham, Ada Myrtle, Willmar  
 Fallon, Regina Anita, Hutchinson  
 Faucher, Agnes Marie, St. Cloud  
 Fawcett, Esther (Mrs.), Minneapolis  
 Feig, Irene Anna, Atwater  
 Fiergolla, Helen Minnie, Sauk Rapids  
 Fiergolla, Julia Anna, Sauk Rapids  
 Findsen, Walda Elizabeth, Staples  
 Finley, Gladys Daisy, Minneapolis  
 Finney, Ellen, Brainerd  
 Fisher, Judith, Webster Groves, Mo.  
 Fitzgerald, Margaret, Alexandria  
 Flynn, Anna Cecelia, Litchfield  
 Flynn, Thelma Ione, Alexander, N. D.  
 Fogelberg, Hattie Charlotta, Akeley  
 Forbregd, Jennie Linnea, Osakis  
 Foss, Bertha May, Rice  
 Foss, Vera Maggiore, Montevideo  
 Foster, Irene Bernice, Osakis  
 Fowlds, Mabel Helen, Palisade  
 Frase, Lillie Alvina, Wood Lake  
 Frasier, Lillian V., Eagle Bend  
 Freborg, Ann Hildergard, Minneapolis  
 Fredeen, Gladys Norma, Cambridge  
 Freeberg, Gertrude Alice, St. Cloud  
 Freeberg, Irene Marie, St. Cloud  
 Freeberg, Ruth Carolyn, St. Cloud  
 Freudenberg, Marguerite, Alexandria  
 Fricker, Alice Mabel, St. Hilaire  
 Fulford, Evelyn, Verndale  
 Fulford, Ivis Lovina, Verndale  
 Fullerton, Ethel, Fairfax  
 Gabiou, Marie Kathryn, Brainerd  
 Gallagher, Ione Margaret, St. Cloud  
 Gallock, Gladys Elaine, St. Cloud  
 Gandrud, Agnes Marian, Sunberg  
 Gardner, Mary Elliott, Minneapolis  
 Gavin, Anna Mae, St. Paul  
 Geer, Ernibelle Marion, Little Falls  
 Gerretson, Rosemond A., Willmar  
 Gersich, Sophie Kathryn, Chisholm  
 Gesme, Marguerite Alice, Paynesville  
 Gibney, Mary Ann, Motley  
 Gilbert, Vera Viola, Foreston  
 Gilles, Marian Esther, St. Cloud  
 Gilman, Esther, Excelsior  
 Gimse, Lillian Agnes, Virginia  
 Goebel, Bonnie Louise, Sandstone  
 Goetten, Margaret, St. Cloud  
 Gohman, Mabel Mary, Clear Lake  
 Goldberg, Pascha M., Minneapolis  
 Good, Gaile Howard, St. Cloud  
 Goodhue, Emily (Mrs.), Dennison  
 Goodman, Fanny Leon, Paynesville  
 Gosch, Mary Ellen, Randall  
 Gossman, Martha, Crookston  
 Gosson, Margaret, Danvers  
 Grabscheid, Margaret, Pipestone  
 Granger, Roland, Minneapolis  
 Gregory, Jean Lydia, Minneapolis  
 Grell, Anna Margaret, Pierz  
 Groth, Lillian (Mrs.), St. Cloud  
 Guin, Beatrice Rae, Brainerd  
 Gunderson, Helen, Gary  
 Gustad, Agnes, Crosby  
 Guthrie, Evelyn A., Blooming Prairie  
 Hadersbeck, Josephine Sue, St. Cloud  
 Hadrich, Floyd Charles, Alexandria  
 Hadrich, Heloise Blossom, Alexandria  
 Hagney, Marie Elizabeth, Rosemount  
 Hagstrom, Hazel Myrtle, Lowry  
 Hajicek, Mary Jane, Hutchinson  
 Hakel, Gladys Elaine, Silver Lake  
 Hall, Lelia Maurine, Mora  
 Halliday, Una Gertrude, St. Cloud  
 Halvorson, Amanda, Henning  
 Halvorson, Josephine, Virginia  
 Hancock, Betty Mae, Dent

Hansen, Inez Margaret, Mora  
 Hansen, Mae Evelyn, Wood Lake  
 Hanson, Gladys (Mrs.), Milaca  
 Hanson, Jessie La Vanche, Alexandria  
 Harapat, Fred, Brook Park  
 Harren, Teresa Gertrude, Freeport  
 Harris, Nellie, St. Cloud  
 Hart, Anna Marie, St. Cloud  
 Hasti, Anna Susan, Cokato  
 Haugen, Elsie Othilia, St. Cloud  
 Hawley, Thorald Aileen, Sandstone  
 Hazard, Lillian Acksa, Excelsior  
 Heid, Bertha Anne, St. Cloud  
 Heinonen, Violet, New York Mills  
 Helsing, Gunnar J., St. Cloud  
 Hendstrand, Irene, Paynesville  
 Hengemueller, Regina A., Long Prairie  
 Hennessy, Claire, Minneapolis  
 Herzberg, Irma Lorraine, St. Cloud  
 Hesli, Pearle Inez, Anoka  
 Hess, Raymond, Glenwood  
 Hewitt, Merle Carolyn, Kimball  
 Hiemenz, Alvina Marie, St. Cloud  
 Hill, Martha, Virginia  
 Hill, Myra Melita, Virginia  
 Hill, Sadie Gene, Maple Plain  
 Hillbrand, Anna, Sturgeon Lake  
 Hodgins, Lillian Ruth, St. Cloud  
 Hodgins, Elizabeth Beatrice, St. Cloud  
 Holm, Mildred Gyda, Minneapolis  
 Holmes, Mary Frances, Minneapolis  
 Holt, Irene Margaret, North Branch  
 Hoppe, Gertrude, Minneapolis  
 Hopper, Irene Almaretta, Virginia  
 Horne, Della Anna, Spicer  
 Horton, Lucille, Sauk Rapids  
 Hovey, Loretta Grace, Elk River  
 Hoyt, Neil Freeland, St. Cloud  
 Hurst, Florence May, Glenwood  
 Huseth, Norma Viola, Elbow Lake  
 Hyberg, Regina, Hamel  
 Hynes, Alice Adelaide, St. Cloud  
 Iversen, Corrah, Lake Benton  
 Jack, Addie Belle, Crow Wing  
 Jacobson, Ada, Madison  
 Jacobson, Minnie, Montevideo  
 Jahn, Audrey Meryl, Alexandria  
 Jaques, Emma June, Aitkin  
 Jaycox, Mabel, Pipestone  
 Jensen, Alice Theodore, Cloquet  
 Jensen, Clara Violet, New London  
 Jensen, Lillie Ida, New London  
 Jensen, Lydia Anna, Audubon, Ia.  
 Jernberg, Mildred, St. Paul  
 Jespersen, Bernice Frances, Anoka  
 Johnson, Amy Pauline, Greenbush  
 Johnson, Edith Clara, North Branch  
 Johnson, Edith Julia, Minneapolis  
 Johnson, Effie Marian, Alexandria  
 Johnson, Eunice Viola, Benson  
 Johnson, Evelyn Gerda, Aitkin  
 Johnson, Gladys Jensine, Cokato  
 Johnson, Grace B., Minneapolis  
 Johnson, Irene E., Alexandria  
 Johnson, Irene Lillian, Ironton  
 Johnson, Lily Winifred, Willmar  
 Johnson, Mabel Nathalia, Willmar  
 Johnson, Madeline, Gardena, N. D.  
 Johnson, Mildred Ruth, St. Cloud  
 Johnson, Myrtle Alvera, Ortonville  
 Johnston, Esther Sinclair, St. Cloud  
 Jones, Mamie Catherine, Little Falls  
 Jones, Walter William, Atwater  
 Julum, Anna, Aitkin  
 Kallin, Signe Emelia, St. Cloud  
 Kamp, Leoba Elizabeth, Morris  
 Kampmeyer, Carolyn, Alberta  
 Kaun, Myrtle Hulda, Swanville  
 Keaveny, John Bernard, St. Cloud  
 Keefe, Constance Elene, Foley  
 Keeley, Margaret Nettie, Crookston  
 Kelly, Florence G. (Mrs.), Minneapolis  
 Kempshall, Nelle Mildred, Marshall  
 Ketten, Evelyn Leonore, Detroit  
 Kingsley, Minnie (Mrs.), St. Paul  
 Kinsella, Mabel, Sauk Centre  
 Kirkendale, Eleanor, Minneapolis  
 Kirwin, Ella Julia, Morris  
 Klatt, Mildred Evelyn, Osakis  
 Knight, Evelyn Frances, Benson  
 Knudson, Lois Chrisanta, Swift  
 Knutsen, Adelaide Regina, St. Cloud  
 Knutsen, Delphine Dorothy, St. Cloud  
 Koefod, Louise Madeline, Minneapolis  
 Korb, Elizabeth Bell, Buffalo  
 Koski, Katherine Mathilda, Menahga  
 Kremer, Hildegard, St. Cloud  
 Kremer, Susan Angela, St. Cloud  
 Krieg, Louise Cornelia, Sauk Rapids  
 Krueger, Theresa Dorothy, Westbrook  
 Kurtz, Gertrude Aloise, Atwater  
 La Londe, Clarence Clifford, Gilbert  
 Lackner, Julia Marian, Virginia  
 Landmark, Anne Marie, Hancock  
 Lane, Ruthe Olivia, Little Falls  
 Lano, Annette, Annandale  
 Larson, Carl Walfred, Clinton  
 Larson, Edith Claribel, Belgrade  
 Larson, Evelyn Lillian, Winthrop  
 Larson, Frances Marie, Clarkfield  
 Larson, Mildred Victoria, Minneapolis  
 Larson, Thelma Sylvia, Minneapolis  
 Larson, Victoria Lulu, Winthrop  
 Lawless, Laura Leone, Minneapolis  
 Lee, Dorothy Juliette, Montevideo  
 Lee, Hazelle Gyda Viola, Madison  
 Lehmeier, Lucetta, St. Cloud  
 Lehner, Dora Ruth, Sebeka  
 Leverty, Claire Isobel, St. Paul  
 Lewis, Myrtle Irene, Osakis  
 Liedl, Rose Marcella, Long Prairie  
 Lien, Nielen Carlisle, Blackduck

Lievens, Bertha Pauline, Graceville  
 Lindahl, Alma Marie, Appleton  
 Lindahl, Ella Elizebeth, Appleton  
 Lindberg, Agnes M., Willmar  
 Linden, Edna Katherine, Belgrade  
 Lindgren, Myrtle Mable, Taylors Falls  
 Lindore, Hilma Heloise, Verndale  
 Lindquist, Josephine, North Branch  
 Lindsley, Samuel Ervin, Roosevelt  
 Litchy, Katherine Annette, St. Cloud  
 Locks, Florence (Mrs.), Little Falls  
 Logelin, Frances, St. Bonifacius  
 Lohnbakken, Jessie Lenore, St. Cloud  
 Longwell, Joyce Ina, Kimball  
 Loomis, Laura May, St. Cloud  
 Loso, Lorraine Agnes, St. Joseph  
 Lum, Marion, Staples  
 Lund, Annie, Pequot  
 Lunder, Myrtle E., Rothsay  
 Lundstrom, Alice, Browns Valley  
 Lutz, Dorothy Lillian, Minneapolis  
 Lynch, Mary (Mrs), Minneapolis  
 Lynne, Agnes Marie, Elbow Lake  
 McDowell, Carl Clinton, Wadena  
 McGuire, Lucille Kathleen, St. Paul  
 McGuire, Margaret Ellen, Cass Lake  
 McGuire, Marie Bridget, Becker  
 McKechnie, Russell J., Gilbert  
 McKelvie, Anna H., Willmar  
 McKenzie, Clara, Superior, Wis.  
 McManus, Margaret, Sauk Rapids  
 Mahoney, Margaret Loretta, Morris  
 Malmberg, Pearl, Atwater  
 Marien, Marie Amelia, St. Paul  
 Marsolek, Aloysius Joseph, St. Cloud  
 Martin, Minnie Catherine, Hinckley  
 Matson, Hilda Albertine, Finlayson  
 Maxson, Maude Jeanette, St. Cloud  
 Mazurka, Mary Pearl, Minneapolis  
 Meffert, Leonarde John, Arlington  
 Melin, Judith, Long Prairie  
 Melquist, Esther Colleen, Minneapolis  
 Metzger, Margaret Marie, Becker  
 Metzroth, May Elenore, St. Cloud  
 Meyer, Clara L., Newport  
 Meyer, Josephine, St. Paul  
 Michelson, Marcia, Minneapolis  
 Mikesh, Amelia Barbara, St. Paul  
 Mikkelsen, Ethel Armen, Clontarf  
 Miner, Virginia Parker, St. Cloud  
 Mix, Fred William, St. Cloud  
 Mockenhaupt, Clara, St. Cloud  
 Modig, Edna Lillian, St. Paul  
 Modig, Ruth Othelia, St. Paul  
 Mohr, Anna Elizabeth, Perham  
 Monson, Ethel Lillian, Aitkin  
 Montgomery, Louise, Minneapolis  
 Moorhead, Veneta Opal, Alberta  
 Morrison, Charlet, Crookston  
 Morrison, Margaret Mary, St. Cloud  
 Moshier, Arloine Frances, Monticello  
 Muncy, Thelma Gladys, Royalton  
 Murphy, Catherine, Prior Lake  
 Murray, Loma Bessie, Howard Lake  
 Murray, Susan Ophelia, Wadena  
 Narum, Helen Irene, Erskine  
 Nash, Florence Myrna, Robbinsdale  
 Neely, Eunice Irene, Princeton  
 Neils, Verona Lydia, Sauk Rapids  
 Nelsen, Alice Mary, St. Paul  
 Nelson, Alice Theodora, Newport  
 Nelson, Alvin Hugo, Evansville  
 Nelson, Edith Eveline, Osakis  
 Nelson, Ellen Joanna, Crosby  
 Nelson, George Baker, St. Paul  
 Nelson, Jennie Sophia, Little Falls  
 Nelson, Lucylle Angella, Minneapolis  
 Nelson, Mabel Amanda, Alexandria  
 Nelson, Mabel S., Rush City  
 Nelson, Maebel Theadora, Faribault  
 Nelson, Nina, Grantsburg, Wis.  
 Nelson, Ruth Eleanor, Kerkhoven  
 Nelson, Vivian Cornelia, Hector  
 Niskern, Minnie Ruth, St. Cloud  
 Njus, Margaret Leonora, Pennock  
 Noeske, Helen Anna, Bertha  
 Nord, Alice Mary, Minneapolis  
 Nordstrom, Edna Marie, Willmar  
 Nordstrom, Hazel Roselie, Atwater  
 Norgaard, Gertrude Lyla, Grove City  
 Norgaard, Hazel N., Grove City  
 Norman, Isabel, Hubbard  
 Norquist, Virginia, Forest Lake  
 Norris, Flossie Irene, New London  
 Norris, Frances, Annandale  
 Norvold, Florence Vivian, Volga, S. D.  
 Nye, Dotty, Herman  
 Nyquist, Ebba Cecelia, Alexandria  
 Nyquist, Ellen Viola, Brainerd  
 Oatman, Theresa Ruth, Clearwater  
 Oberg, Walda, Deerwood  
 Odden, Alma, Cottonwood  
 Ohland, Clarence Albert, Biscay  
 Ohmann, Mathilda Josephine, Albany  
 Oleson, H. Margaret, Hutchinson  
 Olson, Alvera A., Benson  
 Olson, Anna Helen, Spicer  
 Olson, Annie Je Voila, Milan  
 Olson, Della Marie, Pelican Rapids  
 Olson, Elener Dorothy, New London  
 Olson, Elmer Erick, Wahkon  
 Olson, Irene Esther, Ortonville  
 Olson, Knute Leonard, Saginaw  
 Olson, Lillian Catherine, Chokio  
 Olson, Minerva, Parkers Prairie  
 Oltman, Viola Caroline, Robbinsdale  
 Osborne, Cora Helen, Avoca  
 Ostreim, Ingwal Melvin, Osakis  
 Otteson, Elnora Amanda, Starbuck  
 Ousley, Marjorie Lucile, Elk River  
 Paarmann, Lillian Viola, Wadena  
 Parent, Irene Grace, Parent

Parker, Dorothy June, Pillager  
 Parmeter, Myrtle, Minneapolis  
 Parsons, Bernice, Brookpark  
 Pascoe, Evelyn, Republic, Mich.  
 Pattison, Gladys Grace, Staples  
 Paulson Charlotte E., Two Harbors  
 Peifer, Viola Mae, Litchfield  
 Pennie, Edna Maude, Royalton  
 Peters, Eunice Merry, St. Cloud  
 Petersen, Florence Caren, Mora  
 Petersen, Inga Dorthy, Minneapolis  
 Peterson, Esther, Pelican Rapids  
 Peterson, Florence Mae, Ogilvie  
 Peterson, Hyacinth Evelyn, Henriette  
 Peterson, Mildred Lucille, Kandiyohi  
 Peterson, Myra, Lester Prairie  
 Peterson, Olga Louise, Nelson  
 Peysar, Florence Irene, Aitkin  
 Phillips, Bertha Joan, Minneapolis  
 Phillips, Monica Mildred, Bowlus  
 Podoll, Alice Clara, Hanley Falls  
 Polk, Lillian, Pine City  
 Poole, Edna (Mrs.), Truman  
 Post, Alta Elsie, Bagley  
 Potter, Violet Leyona, Buffalo  
 Powers, Cornelia Mary, Chokio  
 Pratt, Gladys Marie, Anoka  
 Prendergast, Muriel, Kevin, Mont.  
 Promersberger, Frances, Littlefork  
 Prowizor, Marian, Holdingford  
 Purmort, Lucy Mae, Anoka  
 Quade, Thora Lucy, Hutchinson  
 Radtke, Margaret Marie, Buffalo  
 Randall, Wilhelmina, Graceville  
 Rauch, Bernadine, Melrose  
 Ravenscraft, Florence, Hanover, Ill.  
 Reine, Inez, Brooten  
 Reinert, Adeline Barbara, St. Cloud  
 Remer, Jacob, Minneapolis  
 Richard, Irene Margaret, St. Cloud  
 Richards, L. Josephine, Sauk Rapids  
 Riley, Genevieve Mary, Glenwood  
 Riley, Orvetta Howard, Hastings  
 Risdall, Gertie Johanna, West Concord  
 Robertson, Gladys Lula, St. Cloud  
 Robinson, Joyce Letitia, Browerville  
 Robinson, Mavis Gertrude, Mission  
 Rodekuhr, Libbie Anna, Deer Creek  
 Roggatz, Rose Ida, Elk River  
 Rosenbloom, Helen Ruth, Frazee  
 Roth, Frances (Mrs.), Dalton  
 Rude, Esther Clara, McGregor  
 Rude, Theodora Olive, South St. Paul  
 Russell, Ethel (Mrs.), St. Cloud  
 Russell, Ruth Lillian, Sauk Rapids  
 Ryan, Helen Cecilia, Buffalo Lake  
 Ryan, Mary Elizabeth, Minneapolis  
 Sahlstrom, Russell, Milaca  
 Salter, Blanche Ellen, Anoka  
 Samuelson, Lillie, North Branch  
 Sanderson, Mary Gladys, Willmar

Sanstead, Gretchen, Garfield  
 Santee, Grace D., Fairmont  
 Santini, Carmela Margaret, Buhl  
 Sauer, Marion, Minneapolis  
 Scanlan, Alice, Maple, Lake  
 Scanlan, Mary Susanna, Maple Lake  
 Scanlan, Virginia, Maple Lake  
 Schabert, Viola Rose, Proctor  
 Schaefer, Bernice Julia, Minneapolis  
 Schaust, Marian Rita, Delano  
 Scherfenberg, Ruth, St. Cloud  
 Schert, Hildegard, Lester Prairie  
 Schlagel, Agnes Veronica, DeGraff  
 Schlough, Irene Mae, Sauk Rapids  
 Schmelz, Pearl Verona, St. Cloud  
 Schmit, Mary Elizabeth, St. Paul  
 Schneider, Agnes Gertrude, St. Cloud  
 Schneider, Hildegard, Adams  
 Schneider, Marguerite, St. Cloud  
 Schoener, Karleen Mary, St. Cloud  
 Scholz, Hildagard Gertrude, St. Cloud  
 Schroeder, Marie, Maynard.  
 Schultz, Florabelle Mary, Alberta  
 Schwandt, Charlotte, Milwaukee, Wis.  
 Schwartz, Kathryn B., Paynesville  
 Schwartz, Lester Carl, Foreston  
 Scott, Flora, International Falls  
 Scott, Olive Ella, Eagle Bend  
 Sederberg, Janet Myrtle, Minneapolis  
 Seifert, Lorinda Everista, St. Cloud  
 Sellen, De Vere, Luverne  
 Senzek, Anne Martha, St. Cloud  
 Setterlund, Elsa, Two Harbors  
 Sheldon, Adelaide, Little Falls  
 Shinnick, Anna Veronica, Clontarf  
 Siems, Helen Bertha, Chaska  
 Silker, Lucile Marie, Spring Valley  
 Silseth, Frances Elvera, Grove City  
 Sisson, Mary Bernice, Dassel  
 Sister M. Cilinia Issing, Collegeville  
 Sister M. Immacula Roeder, St. Cloud  
 Sister M. Laurelia, Collegeville  
 Sister M. Loraine Tracy, St. Cloud  
 Sister M. Superata, Collegeville  
 Sister M. Vestina, Collegeville  
 Skeate, Constance, St. Cloud  
 Skogman, Harriet Leone, Cambridge  
 Skudlarek, Anna Julia, Avon  
 Smith, Blanche, Litchfield  
 Smith, Grace, St. Cloud  
 Smith, Grace Cleory, Clearwater  
 Smith, Henrietta M., Clearwater  
 Smith, Lettie, Gilmanston, Wis.  
 Smith, Mildred E., Deerwood  
 Smraker, Louis John, Little Falls  
 Solum, Charlotte Genevieve, Osakis  
 Sorenson, Laura Elizabeth, Becker  
 Soschnik, Esther Marie, Montrose  
 Soschnik, Leo Simon, Montrose  
 Sours, Hazel Mary, Minneapolis  
 Soyka, Clara Marion, Holdingford



Spencer, Carol Beatrice, Zimmerman  
 Stanchfield, Bessie Mae, Minneapolis  
 Starkey, Agnes Elida, Cambridge  
 Stauffer, Edris Vera, Glenwood  
 Steen, Pearl M., Kerkhoven  
 Steenson, Myrtle, Minneapolis  
 Stenger, Helen Mary, Morris  
 Stensrud, Myrtle Mae, St. Cloud  
 Strom, Lillie E., Minneapolis  
 Stromert, Clarice M., Willmar  
 Stumpf, Abby Mary, Tintah  
 Swansen, Dorothy Marie, Minneapolis  
 Swanson, Agnes Cornelia, Murdock  
 Swanson, Esther Sophia, Eagle Bend  
 Swanson, Gladys Annette, St. Paul  
 Sweet, Helen Gladys, Alexandria  
 Swennes, Mildred, Wahkon  
 Tart, Margaret Evelyn, Alexandria  
 Teeter, Frances, Minneapolis  
 Templeton, Ruth Margaret, Brainerd  
 Theilig, Wilhelmina T., Minneapolis  
 Then, Theresa Adelaide, Hastings  
 Thompson, Berniece Mae, Omaha, Neb.  
 Thompson, Sarah Agnes, Burtrum  
 Tjernagel, Della Burnett, Georgeville  
 Tolin, Myrtle Eleanore, Dalbo  
 Topp, Gertrude Dorothea, Frazee  
 Townsend, Eva (Mrs.), Park Rapids  
 Tracy, Myrtle Ann, West Concord  
 Tripp, Vivian Arlean, Burdette  
 Tronson, Geneva Elizabeth, Staples  
 Troske, M. Ursula, Wabasso  
 Trumble, Olive Beatrice, Excelsior  
 Trumbull, Maude, Lisbon, N. D.  
 Ulvestad, Martha Luella, Morris  
 Unger, Bernadette, Melrose  
 Van Eaton, Clyde, Osakis  
 Veeder, Hilda May, Sauk Centre  
 Vieley, Laura (Mrs.), Minneapolis  
 Wadleigh, Sydney Manley, Brandon  
 Wagner, Grace Melva, Onamia  
 Wagner, Olive Myrtle, Echo  
 Walberg, Lillie, St. Cloud  
 Walker, Averill Joy, Aldrich  
 Walker, Fern Irene, Brook Park  
 Walker, Mildred Lincoln, St. Cloud  
 Wallace, Frances, St. Paul  
 Walsh, Myrtle Florence, St. Paul  
 Walter, Ralph George, Osakis  
 Walters, Juanita Thayer, Annandale  
 Watrin, Martha Marie, Little Falls  
 Watychowicz, Catherine, Minneapolis  
 Weber, Helen Lorraine, Minneapolis  
 Weber, Lucy, St. Cloud  
 Weismann, Margaret, Rockville  
 Weivoda, Philip Alphonse, Albany  
 Welch, Evelyn Rose, Wadena  
 Welton, Agnes Elizabeth, Maple Lake  
 Westergren, Doris Eva, Bertha  
 Wetherby, Ethel Irene, Willmar  
 Wetter, Odella Adah, Montrose  
 Whalen, Ruth Marie, St. Louis Park  
 Whipple, Ariel Francese, Minneapolis  
 White, Frances, Sioux Falls, S. D.  
 Wightman, Ruby Evelyn, Hutchinson  
 Williams, Clem R., St. Cloud  
 Williams, Emmet David, Clear Lake  
 Williams, Esther Lucilla, Hutchinson  
 Williams, Valborg Alette, Litchfield  
 Willis, Ursula Jewelette, Marietta  
 Wimmer, Genevieve Marie, St. Cloud  
 Wolhart, Estella Anne, Brainerd  
 Yanz, Rose Margaret, Staples  
 Yates, Ada Ruby, North Hibbing  
 Youngberg, Hazel, Sauk Rapids  
 Zabel, Isala Juliana, Deer Creek  
 Zahler, Mary Anastasia, Melrose  
 Ziegler, Alice Julia, Brook Park  
 Zupuncic, Josephine Marie, Aurora

### FIVE-YEAR COURSE

Alexander, Theresa (Mrs.), St. Cloud  
 Anderson, Anatin, Farwell  
 Anderson, Marie Mathilda, Brainerd  
 Arneson, Sena, Lime Springs, Ia.  
 Billings, Mark E., St. Paul  
 Calhoun, Pauline, St. Cloud  
 Cullen, Freda (Mrs.), St. Cloud  
 Diger, Minnie Caroline, St. Cloud  
 Donoghue, Lucie Agnes, Marshall  
 Donoghue, Nellie Amy, Marshall  
 Gee, Florence L., Minneapolis  
 Hage, Alma, Ladysmith, Wis.  
 Haney, Elizabeth (Mrs.), Minneapolis  
 Jensen, Lucie Eleanor, Clearbrook  
 Lodermeier, Carola (Mrs.), Royalton  
 Muedcking, Bertha Sophia, Tracy  
 Nelson, Lillian Theresa, Mora  
 Olson, Helen, St. Cloud  
 Olson, Olive S., St. Cloud  
 Ottum, Gladys Junnette, St. Cloud  
 Russell, Ethel May, Clearwater  
 Scofield, George, St. Cloud  
 Whitaker, Dorothy Quincy, Rockville  
 Wilson, Beryl Alice, Minneapolis



## JUNIOR CLASS

### Two-Year Course

Abbott, Robert Quintin, Eagle Bend  
 Abbott, Ruth Arabelle, Eagle Bend  
 Abrahamson, Sarah Claire, Virginia  
 Ackermann, Henriette, Minneapolis  
 Adams, Ilah Decima, Breckenridge  
 Adams, Lois Mae, Fort Ripley  
 Adickes, Esther Albertina, Tamarack  
 Adkins, Virgil Clay, Ronneby  
 Ahlstrand, Margaret Edna, Virginia  
 Alban, Matthew Steward, Hastings  
 Albrecht, Ida Helen Hattie, Staples  
 Aldrich, Golda Merle, Elk River  
 Aldrich, Harriett Emily, Minneapolis  
 Alexon, Elvira Louise, Virginia  
 Allen, Myrtle Gertrude, St. Cloud  
 Almquist, Irene Gertrude, Harris  
 Alstead, Gladys Burnesse, Evansville  
 Amble, Esther Marien, Frost  
 Ames, Elsie Alice, Verndale  
 Amundson, Alice Cora, Iron Junction  
 Amundson, Ella Othilia, Appleton  
 Anderberg, Alice Harriett, Grove City  
 Anderberg, Julia Amanda, Staples  
 Anderson, Alvina Sophia, Tower  
 Anderson, Andrew Gustav, St. Cloud  
 Anderson, Effie Regina, Litchfield  
 Anderson, Eleanore, Little Falls  
 Anderson, Florence, Alexandria  
 Anderson, Gladys, Minneapolis  
 Anderson, Gudrun Langvad, Askov  
 Anderson, Mae Alice, Menahga  
 Anderson, Maybelle Ruth, Granada  
 Anderson, Mildred Adna, Burtrum  
 Anderson, Myrtle Sophia, Murdock  
 Anderson, Rhoda Andrea, Virginia  
 Anderson, Rosella Hannah, Lucan  
 Anderson, Ruth Gladys, Taylors Falls  
 Anderson, Selma Olivia, Glenwood  
 Anderson, Sylvia, New London  
 Anderson, Valeria, Owatonna  
 Anderson, Vera Augusta, Minneapolis  
 Anderson, Vivian Hildur, Swanville  
 Andrews, Roberta Emily, Minneapolis  
 Archer, James Harold, Murdock  
 Armstrong, Ingabye, Minneapolis  
 Armstrong, Sylvia Helen, Minneapolis  
 Arneson, Laura Georgene, Redtop  
 Arnold, Margaret Lucile, Vesta  
 Aronson, Albert Julrick, Ivanhoe  
 Arrowsmith, Catherine, Holland  
 Ashenbrenner, Ermenilda, St. Joseph  
 Ashmore, Mae Alice, Maynard  
 Atlas, Sadie Ida, St. Paul  
 Bachelder, Marion A., Brainerd  
 Bade, Esther Margaret, Minneapolis  
 Bagel, Anne Genevieve, Minneapolis  
 Bagel, Martha Lillian, Minneapolis

Bain, Bessie Pearl, Clarissa  
 Bain, Ellen Martha, Clarissa  
 Bain, Inez Lillian, Minneapolis  
 Baker, Ethel May, Hancock  
 Baker, Mary Frances, Aitkin  
 Bard, Gertrude Carolyn, Anoka  
 Barie, Ruth Irene, Correll  
 Barr, Elizabeth Joan, Buffalo  
 Barr, Ophia May, St. Cloud  
 Barrett, Michael T., St. Cloud  
 Barros, Mabel Olivia, Alexandria  
 Bartness, Hulda, Elbow Lake  
 Baumann, Florence, Bird Island  
 Baumgartner, Louise, Grafton, N. D.  
 Beck, Anna Marie, Buffalo Lake  
 Bednark, Bessie Lucy, Little Falls  
 Bell, Raymond Marquit, Clearwater  
 Bell, Vera Lillian, Hutchinson  
 Bemis, Grace Alice, Oak Park  
 Benkauskys, Agatha Florence, Swanville  
 Bennett, Cora Christine, Lowry  
 Benson, Ethel Eugenia, Eagle Bend  
 Benson, Mable Irene, Murdock  
 Benzinger, Della, Parkers Prairie  
 Berentzen, Eva Viola, Roseau  
 Berge, Ruth Hilda, Sisseton, S. D.  
 Berge, Sigrid Gudrun, Bagley  
 Bergeron, Gladys Mae, Minneapolis  
 Berglund, Bessie, Hoffman  
 Berglund, Janna, Appleton  
 Bergman, Mildred Myra, Isanti  
 Bergquist, Mabel Esther, Milaca  
 Bergsten, Florence (Mrs.), Detroit  
 Bernard, Evelyn Ruth, Elk River  
 Bernick, Constance Ruth, St. Cloud  
 Berquist, Pearl Isabella, Minneapolis  
 Berry, Myrtle Edith, Lowry  
 Beuhl, Leon Raphield Waverly,  
 Beven, Elizabeth Magdalene, Verndale  
 Beystrom, Eileen Florence, Virginia  
 Bickford, Irma Orel, Sebeka  
 Biederman, Myrtle Marjory, Virginia  
 Billings, Lucy (Mrs.), St. Paul  
 Birkman, Alvina S., Mora  
 Bischoff, Martha, Freeport  
 Bisel, Pearl Anne, Burtrum  
 Bjorkland, Prudence Sylvia, St. Cloud  
 Bjornberg, Mae Charlotte, Willmar  
 Bjornfeld, Ida Marie, Milan  
 Black, Frederick Paul, Danube  
 Black, Lillian, Warren  
 Blake, Dorothy Cardon, Minneapolis  
 Blakely, Bernice Minnie, Paynesville  
 Blau, Emma Caroline, Sauk Rapids  
 Blenkush, Teresa Marceline, Rice  
 Bloom, Royal Ferdinand, Cambridge  
 Booker, Helen Elisabeth, Bain

- Booth, Frances Jane, Big Lake  
 Born, Margaret Edith, Minneapolis  
 Bostrom, Hilda Frederika, Alexandria  
 Bothne, John Gisle, Pequot  
 Bowden, Ellen Cora, Herman  
 Boylan, Kathleene, Watertown  
 Braden, Mabel Lois, Kimball  
 Bradley, Laura Cora, Parkers Prairie  
 Braman, Darline Ann, Graceville  
 Brandtner, Angeline, Spring Park  
 Bratton, Bernice Ruth, Herman  
 Bratton, Lucy Isabelle, Herman  
 Braun, Florence, Renville  
 Breider, Ella Cecilia, Hibbing  
 Breiland, Marvinna Christina, Bruno  
 Brenden, Cora Magdalyn, Starbuck  
 Brennan, Gertrude Anna, Lakeville  
 Brennan, Margaret Colletta, Adrian  
 Brenny, Florence Victoria, Foley  
 Brooks, Myrtle LaVina, Zimmerman  
 Brower, Flora May, Kimball  
 Brown, Bertha Isabel, Minneapolis  
 Brown, Ethel Lillian, Osseo  
 Brown, Lolita Laura, Gilbert  
 Brown, Mary, St. Cloud  
 Bruckshen, Anne Gertrude, Freeport  
 Bruening, Frieda Augusta, N. St. Paul  
 Bruininga, Daisy, Appleton  
 Brusven, Eunice Ovedia, Willmar  
 Bucci, Helen Florence, Eveleth  
 Buckley, Lenore Frances, Alberta  
 Buehler, Mary Loretta, Minneapolis  
 Buehrer, Esther A., Swanville  
 Bunt, Helen Elizabeth, St. Cloud  
 Burke, Marie Anastacha, St. Cloud  
 Burmeister, Ida, Fairfax  
 Burns, Adelaide, Litchfield  
 Button, Donald Arthur, Hackensack  
 Buttweiler, Clara Theresa, Melrose  
 Caba, Tillie Rita, Waubun  
 Cain, Mary Ellen, St. Cloud  
 Cairns, Constance Cordelia, Rice  
 Campbell, F. Colin, Alexandria  
 Campbell, Louise, Buffalo  
 Campbell, Nancy Elizabeth, Ogilvie  
 Carlson, Florence Theresia, Little Falls  
 Carlson, Minnie Carolyn, Willmar  
 Caron, Leona Marie, Marshall  
 Carpenter, George, Kimball  
 Carpenter, Mildred Luella, Grove City  
 Carter, Eva Ann, Zimmerman  
 Carter, Laura E., Bertha  
 Cassady, Irva Inez, Litchfield  
 Caswell, Addie Alethea, Eden Valley  
 Cater, Irene Eliza, Princeton  
 Cederberg, Margaret Elvera, Barrett  
 Chapman, Geneva LaPearl, Royalton  
 Chapman, Meta Lenora, Royalton  
 Chapman, Orpha Irene, Royalton  
 Cheeley, Opal Edna, Foley  
 Christensen, Cora Mae, Anoka  
 Christensen, Gladys Lillian, Hancock  
 Christensen, Cora Sebelia, Clarkfield  
 Clapp, Frances Marie, Appleton  
 Clark, Bernice Eleanor, Minneapolis  
 Clark, Edith Malvina, Carlos  
 Clark, Fred, Brookpark  
 Clark, Rose Alice, Elk River  
 Clarquist, Verna Elvira, Hoffman  
 Clementich, Rose, Minneapolis  
 Clow, Dorothea Leigh, Humboldt  
 Clow, Eleanor Gretchen, Humboldt  
 Cohler, Edith Shirley, St. Paul  
 Cohoes, Floyd Wrighter, Zimmerman  
 Coleman, Robert Lee, Elbow Lake  
 Collin, Effie Marian, Alexandria  
 Comstock, Claude Esle, Bertha  
 Conati, Marie Caroline, Stillwater  
 Connole, Mary Margaret, Litchfield  
 Connor, Lois J., Minneapolis  
 Cooley, Ferne Alice, Glenwood  
 Cooper, Myrtle Enid, Pequot  
 Covell, Gervaise Audrey, New London  
 Cox, Asenath Mildred, Clear Lake  
 Cox, Olive Laura, Clear Lake  
 Cresine, Irene Geneveva, Buffalo Lake  
 Crever, Alma Rose Thresa, St. Joseph  
 Crolley, Agnes Mary, Minneapolis  
 Croonquist, Adelaide, Kandiyohi  
 Culligan, Florence Margaret, St. Paul  
 Culligan, Gladys Louise, St. Paul  
 Culver, Beatrice Leola, Minneapolis  
 Current, Ada Beatrice, Bertha  
 Cyrus, Fern Ila, Glenwood  
 Czarnetzki, Laura, Sauk Rapids  
 Czarnetzki, Margaret, Sauk Rapids  
 Daberkow, Agnes Hulda, Hancock  
 Dahl, Marguerite Irene, Cottonwood  
 Dahlem, Janette, Sauk Centre  
 Danelson, Oril Vivian, Lake Lillian  
 Daniel, William Anthony, St. Cloud  
 Daniels, Goldie Francis, Atwater  
 Danzl, Hilda Christina, Melrose  
 Daugherty, Benjamin, Stanchfield  
 Davidson, Fern Marie, Watkins  
 Davies, Vivian Jane, Big Lake  
 Davis, Freda Eleanor, Litchfield  
 Davis, Ladora Ruth, Waubun  
 Davis, Myrabelle, Wadena  
 Davis, Ruth Mae, South Haven  
 Dawson, Phyllis May, St. Cloud  
 Dayton, Bernice Elsie, Minneapolis  
 De La Hunt, Lois Gertrude, Willmar  
 DeMars, Elsie Mary, Minneapolis  
 Degendorfer, Violet Elfreda, Morris  
 Deline, Clara Maude, Leader  
 Deluhery, Juanita, Alexandria  
 Desens, Esther Annie, Litchfield  
 Dickenson, Grace Nina, Anoka  
 Dickinson, Doris, Monticello  
 Diffendorf, Dorothy Harriet, Willmar  
 Dill, Avis Sarah, Glenwood

Doege, Martha Rosalie, Sauk Centre  
 Doherty, Catherine Joan, Minneapolis  
 Donnay, Frances, Paynesville  
 Dorn, Gladys Mary, Sebeka  
 Dorn, Olga Frieda, Sebeka  
 Doughty, Sadie Rebecca, Milaca  
 Downey, Earleane Parker, Renville  
 Dresser, Mildred Maude, Wadena  
 Driste, Elsie Annette, Litchfield  
 Driste, Matilda Josephine, Litchfield  
 Drobny, Marie, Big Stone, S. D.  
 Drury, Lillian Mary, Prentice, Wis.  
 Dufort, Beatrice Alma, Little Falls  
 Dugan, Florence Helen, Watertown  
 Dunkel, Rosalie Marie, Sauk Rapids  
 Dunn, Mary Frances, St. Cloud  
 Durant, Florence (Mrs.), Randall  
 Dushak, Dorothy Evelyn, Minneapolis  
 Dynan, Dan Robert, Annandale  
 Dyson, Dorothea Fairbank, Hill City  
 Dziewieczynski, Pollie, Holdingford  
 Ebert, Emma Agnes, Brewster  
 Edinger, Flora Marian, Wadena  
 Eggena, Alice, Monticello  
 Egleston, Mary Alice, Wadena  
 Eiben, Esther Emma, Alexandria  
 Eidem, Nickolai, Marietta  
 Ek, Minerva Olivia, Stanchfield  
 Eklund, Esther Olivia, Benson  
 Emmel, Rebecca Josephine, Melrose  
 Eng, Oscar Raymond, Inkster, N. D.  
 Engelhard, Henry, Freeport  
 Engler, Emily, St. Bonifacius  
 Engler, Laura May, Isle  
 Erickson, Clara Otelia, Alexandria  
 Erickson, Edna Emma, Minneapolis  
 Erickson, Harriet Nellie, Minneapolis  
 Erickson, Mildred, Sauk Rapids  
 Erickson, Minnie Charlotte, Red Wing  
 Erickson, Vivian, Sauk Centre  
 Erps, Lucy Emily, Kensington  
 Ewing, William George, Glenwood  
 Felton, Hazel Mirian, Alexandria  
 Fennessey, Luverne, Lake Benton  
 Ficker, Madeline Marie, Cold Spring  
 Fleetwood, Lulu (Mrs.), Dundas  
 Flink, Olga Murial, Cambridge  
 Floe, Olga Ruth, Cottonwood  
 Foote, Irene Lois, Royalton  
 Forcier, Gertrude, Bird Island  
 Fort, Effie Loralena, Ironton  
 Fortier, Conrad, Waubun  
 Fourre, Lucele Patricia, Litchfield  
 Fowlds, Ruth Cordelle, Brooten  
 Frazier, Esther Lucille, Verndale  
 Fredrickson, Genevieve, Dassel  
 Friend, Gertrude, Minneapolis  
 Fritz, Frances Angeline, Eveleth  
 Fritz, Katherine Rozanne, Eveleth  
 Fruth, Anne Mary, Albany  
 Fry, Paul Hyde, St. Cloud

Fryer, Nathaniel Allen, St. Paul  
 Frykholm, Tillie, Hastings  
 Fugere, Joy Eva, Chisholm  
 Gaffaney, Rose Ellen, Breckenridge  
 Gaffney, Mabel Agnes, Glenwood  
 Gage, Elva Julia, St. Paul  
 Gagnia, Oleva (Mrs.), St. Cloud  
 Gans, Elizabeth Ann, St. Cloud  
 Garner, Margaret Katharyn, Hancock  
 Garrett, Grace Dorothy, Minneapolis  
 Gehm, Ruth Edna W., St. Cloud  
 George, Gamades, St. Cloud  
 Gilbert, Gertrude Mae, Morris  
 Gilbert, Mary Carolyn, Anoka  
 Gjevre, Ruth Martha, Hancock  
 Gleason, Alice D., Wadena  
 Glenn, Dorothy Bell, Minneapolis  
 Goblirsch, Agnes Josephine, St. Cloud  
 Godfrey, Mary Patricia, Hibbing  
 Good, Olga, St. Cloud  
 Goodhue, Margaret, Dennison  
 Goodin, Florence E., Anoka  
 Goranson, Anna O., Shafer  
 Gottwalt, Louis Theodore, Rice  
 Gow, Bertha Mirian, Anoka  
 Graber, Lillian M., Sauk Centre  
 Grady, Daniel John, Rosemount  
 Graham, Barbara Flora, Anoka  
 Grahek, Rosabelle Bernice, St. Cloud  
 Gravley, Irene Virginia, Dent  
 Greene, Wesley Dwayne, Rice  
 Gregor, Violette Helen, Hancock  
 Grellson, Lela Edith, Braham  
 Grellson, Ruth Lorraine, Stanchfield  
 Griffith, Martha Leota, St. Cloud  
 Grunert, Florence Leona, Danube  
 Grunloh, Rudolph, Avon  
 Gulbranson, Ethelyn Sylvia, Hoffman  
 Gummert, Antonia Frances, Hopkins  
 Gumper, Marie M., Becker  
 Gustafson, Florence, Wadena  
 Gustafson, H., (Mrs.), North Branch  
 Haack, Stella Elizabeth, Waite Park  
 Hagen, Irma Idell, Johnson  
 Hagstrom, Hilda Marie, Lowry  
 Haines, Jessie Grace, Paynesville  
 Haines, Lola Evelyn, Paynesville  
 Haley, Hughzince Mary, Willmar  
 Hallborn, Clara Mabel, Atwater  
 Halverson, Lillian M., Minneapolis  
 Halverson, Ruth Henrietta, Brooten  
 Halvorson, Irene Mildred, Atwater  
 Hames, Margaret Hazel, Fergus Falls  
 Hamland, Jeannette Mae, Virginia  
 Hannafin, Mary Ann, Minneapolis  
 Hansen, Albert, Sauk Centre  
 Hansen, Florence Dagny, Virginia  
 Hansen, Josephine, Sauk Centre  
 Hanson, Alice Mae, Sebeka  
 Hanson, Lillian Adele, Deerwood  
 Hanson, Mabel O., Motley

- Hanson, Myrtle Eldora, Alexandria  
 Hanson, Ruth Olive Esther, Anoka  
 Hanson, Stella Leonora, Brandon  
 Hardy, Luella Anora, Hastings  
 Harris, Arloine, Hanley Falls  
 Harris, Evalyn Alzina, Osakis  
 Hassler, Frances Agnes, Perham  
 Hastings, Elizabeth (Mrs.), Mpls.  
 Hatlelid, Lillie Alice, St. Cloud  
 Hawkins, Gladys, Deer River  
 Hazard, Ruth Hattie, Excelsior  
 Hearn, Catharine, Minneapolis  
 Hedberg, Daniel Carl, Waite Park  
 Heim, Louise Joan, St. Cloud  
 Heimann, Ethel Luetta, Graceville  
 Hein, Wara Winifred, Montevideo  
 Heisel, Clementine, Little Falls  
 Hendrickson, Hulda Marie, Brainerd  
 Hendry, Moselle Easter, St. Cloud  
 Henjum, Mary, Sioux Falls, S. D.  
 Henjum, Irene Lena, Sioux Falls, S. D.  
 Henning, Wendell, St. Cloud  
 Hensel, Etta Bertha, Big Fork  
 Hermanson, Durven Ernest, Boyd  
 Herr, Laura Modelyn, Atwater  
 Hesley, Laura May, Becker  
 Hesselroth, Alice Victoria, Braham  
 Hetherington, Katherine, Hastings  
 Heuer, Edna Marie, Bertha  
 Hidde, Blanche Pearle, Herman  
 Hidde, Valeria Vernice, Herman  
 Hiemenz, Herbert John, St. Cloud  
 Hinkley, Merle, Little Falls  
 Hirt, Hazel Lillian, Hector  
 Hjelm, Ruth Amelia, St. Cloud  
 Hlinka, Emma Kathryn, Buffalo  
 Hockert, Mathilda Ann, Brandon  
 Hoefer, Gertrude Irene, St. Paul  
 Hoffman, Louis Robert, Annandale  
 Hoikka, Anna Kathryn, Annandale  
 Hoiland, Harriet, Benson  
 Holian, Effel Berlyne, Maynard  
 Holm, Estrude W., Minneapolis  
 Holm, Mildred Esther, New London  
 Holman, Elsie Mabel, Sauk Centre  
 Holmen, Gladys Theresa, Barrett  
 Holmes, Florence Pauline, Fertile  
 Holmes, Julia Evelyn, Fertile  
 Holst, Venice, Sacramento, Calif.  
 Holt, Elsie, Katherine, Minneapolis  
 Holtan, Frances Josephine, Clarkfield  
 Holtberg, Lila Mildred, Belgrade  
 Holzinger, Anna Marie Eva, Willmar  
 Hooker, Clifford Ernest, Brook Park  
 Horn, Earl Thomas, Pillager  
 Hosford, Ethel Frances, Benson  
 Hoskins, Orpha, Eden Valley  
 Hove, Pearl, Hayward  
 Hoveland, Alma N., Leader  
 Hovorka, Claire Joan, St. Cloud  
 Howe, Elizabeth Arethusia, Hopkins  
 Huber, Bertha Emily, Sauk Centre  
 Hultander, Emma S., Elbow Lake  
 Humphrey, Mildred, Woodstock  
 Hurley, Mary Elizabeth, Keewatin  
 Husband, Wynona Lucile, Wadena  
 Huseeth, Ellen Agnes, Elbow Lake  
 Imholte, Collette Anna, Clear Lake  
 Ingebrigtson, Sara, Minneapolis  
 Ironside, Ellsworth, Browns Valley  
 Jackman, Selma Marie, Aitkin  
 Jacobson, Alpha, Madison  
 Jacobson, Blanche Irene, Kerkhoven  
 Jacobson, Tilda Marie, Elk River  
 James, Fannie Power, Red Wing  
 Jardine, Mildred, Sauk Centre  
 Jarvinen, Ellen A., Manahga  
 Jaycox, Gertrude, Pipestone  
 Jaycox, Nancy, Pipestone  
 Jefferson, Frances, Bingham Lake  
 Jenkins, Edna May, Waverly  
 Jensen, Agnes Catherine, Virginia  
 Jensen, Alma, Becker  
 Jespersion, Adelaide Irene, Minneapolis  
 Johnson, Ada Irene, Isanti  
 Johnson, Agnes C., Willmar  
 Johnson, Alice Johanna, Benson  
 Johnson, Alice Marie, South Hibbing  
 Johnson, Annie Charlotte, Garfield  
 Johnson, Edith Johanna, Maynard  
 Johnson, Edna, New York Mills  
 Johnson, Edna Edith, Atwater  
 Johnson, Edythe Helen, Mora  
 Johnson, Emma Sophia, Svea  
 Johnson, Emmy, International Falls  
 Johnson, Ethel Lorraine, Becker  
 Johnson, Eunice Victoria, Braham  
 Johnson, Eveline, Minneapolis  
 Johnson, Florence Adena, Virginia  
 Johnson, Florence Esther, Clear Lake  
 Johnson, Frances Clara, Eagle Bend  
 Johnson, Frances Helen, Becker  
 Johnson, Freda, Pine River  
 Johnson, Gladys Marion, Minneapolis  
 Johnson, Huldah Evelyn, Ortonville  
 Johnson, Irene Linda, Big Lake  
 Johnson, Jennie Marie, Little Falls  
 Johnson, Julia Marie, Lake Mills, Ia.  
 Johnson, Laura Bertha, Brainerd  
 Johnson, Lillian Jeanette, Becker  
 Johnson, Maud Harriet, Evansville  
 Johnson, Myrtle Evelyn, Willmar  
 Johnson, Myrtle Irene, Brainerd  
 Johnson, Nathaniel Wesley, St. Cloud  
 Johnson, Pearl Beatrice, Grove City  
 Johnson, Pearl Elsie, Clear Lake  
 Johnson, Pearl Genevieve, Tower  
 Johnson, Ruth Gladys, Minneapolis  
 Johnston, Stanley, St. Cloud  
 Johnston, Thekla Romoma, Canby  
 Jones, Venita Idell, Minneapolis  
 Jost, Elizabeth Helen, St. Joseph



Julin, Hazel Irene, Kensington  
 Kaiser, Rose Marilynn, Little Falls  
 Kaluscha, Cecile Caroline, Duluth  
 Kambestad, Gertrude, Kerkhoven  
 Kambestad, Lloyd, Kerkhoven  
 Kapell, Emma Louise, Frazee  
 Kaslow, Opal Margaret, Minneapolis  
 Kaun, Leona Sybilla, Brainerd  
 Kay, Lottie Mae, Little Falls  
 Keasling, Elsie Alice, Zimmerman  
 Keaveny, Martin Timothy, St. Cloud  
 Keefe, Genevieve Bernardine, Morton  
 Keefe, Molly Evelyn, Foley  
 Kenney, Mary Kathryn, Kerkhoven  
 Kiefer, Martha Anione, Belgrade  
 Kilgard, Grace Ethel, Clear Lake  
 Kilgard, Irma Christine, Foley  
 Kilian, Maude Anna, Melrose  
 Kilstofte, Gudrun Berntsen, Askov  
 Kingsley, Eria Myrine, Bain  
 Kipp, Alvira Jeannette, Fosston  
 Kipp, Harriet Lilyanne, Fosston  
 Kipp, Marion Odella, Fosston  
 Kirchenbauer, Amelia, Clear Lake  
 Kirsch, Harold August, St. Cloud  
 Kise, Orien Harold, Hanley Falls  
 Kissner, Hazel Marie, Graceville  
 Kjelskus, Mabel Otelia, Little Falls  
 Klebs, Agnes Cecil, Bertha  
 Klein, Alvina Catherine, Watkins  
 Kleinfehn, Laurine, Melrose  
 Kleven, Ruth Winifred, Sebeka  
 Kline, Evelyn Lucille, Brewster  
 Klof, Ellen Cecelia, Little Falls  
 Knapp, Marcella Dorthea, Preston  
 Knapp, Margery May, Big Lake  
 Knaub, Laura Marie, St. Paul  
 Knower, Margie Carol, Kimball  
 Knutson, Mabel Emilie, Belgrade  
 Kohlhasse, Joyce Jacob, Mizpah  
 Koivisto, Aile Marie, Virginia  
 Konsak, Marloe Ida, Alexandria  
 Korll, Theresa Marie, Flensburg  
 Kosel, Gertrude Josephine, Rice  
 Kosel, Mary J., Waite Park  
 Koskey, Olga, Hibbing  
 Kost, Romona Mary Margaret, Avon  
 Kowalke, Ralph Benjamin, Excelsior  
 Kramer, Delia Elizabeth, Watkins  
 Kressek, Eunice Jane, Nashwauk  
 Kriebs, Vaughn Harold, Hackensack  
 Kriesel, Evelyn Carol, Stillwater  
 Krizan, Nellie, Minneapolis  
 Kruger, Esther Elverna, Paynesville  
 Kruger, Harvey Helmer, Paynesville  
 Kummert, Charlotte Anne, Little Falls  
 Kusba, Evelyn Emma, Sauk Centre  
 Kuske, Doris Della, Mound  
 Kyvig, Helen Anna, Starbuck  
 La Valle, Evelyn Mary, Graceville  
 Ladwig, Harold Ronald, Paynesville

Lahde, Carmen, New York Mills  
 Laitala, Lina Marie, Ely  
 Lambert, Ione Eleanor, Little Falls  
 Landaal, Lester Frank, Pease  
 Lane, Rose Marie, Graceville  
 Larsen, Evelyn, St. Louis Park  
 Larson, Cora Beatrice, Belgrade  
 Larson, Edith Marie, Pequot  
 Larson, Evelyn Irene, Kensington  
 Larson, Florence, Eveleth  
 Larson, Hattie B., Chokio  
 Larson, Helen Josephine, Murdock  
 Larson, Hilda Amelia, St. Cloud  
 Larson, Ray Wells, St. Cloud  
 Latterell, Helen Marie, Foley  
 Latterell, Iola Grace, Foley  
 Latterell, Naomi Louisa, Foley  
 Latterell, Philemon Nollette, St. Cloud  
 Lauer, Leo John, St. Cloud  
 Lauer, Margaret, Eden Valley  
 Lawin, Clara, Waseca  
 Le Count, Ruth Carol, Villard  
 Leasman, Myrle Emeline, Hewitt  
 Ledebauer, Jacob, Pease  
 Lee, Lillian Juliana, Brainerd  
 Lee, Lois Emiline, Cedar  
 Lee, Luella, Elbow Lake  
 Leix, C., Lucile, Minneapolis  
 Lewis, Priscilla, Minneapolis  
 Lida, Gladys Clara, Lowry  
 Lilko, Montello (Mrs.), Aitkin  
 Lillemon, Ruth Lenor, Greenbush  
 Lillquist, Dorothea Elva, Minneapolis  
 Lindberg, Anna, Bottineau, N. D.  
 Linden, Arnold Edward, Belgrade  
 Lindgren, Ida, Little Falls  
 Lindholm, Hildegard Marie, Harris  
 Lindquist, Anna Charlotte, Willmar  
 Linquist, Mildred Irene, Atwater  
 Linsley, Florence Keith, Willow River  
 Lohnbakken, Agnes, Dawson  
 Lommel, Gertrude Adelaide, St. Cloud  
 Lozo, Julia Josephine, Royalton  
 Lucking, Margie Betty, Perham  
 Luhde, Freda Henrietta, Sartell  
 Luhrs, Helen Anna, Royalton  
 Lund, Deborah Theresa, Twin Valley  
 Lundeen, Sidney Bertram, Isanti  
 Lundquist, Alice Sophie, Hoffman  
 Lynn, Betty Octavia, New Germany  
 McArthur, Muriel, Hancock  
 McArthur, Norene Gertrude, Hancock  
 McCaffrey, Margaret Helen, Pipestone  
 McCallum, Esther Kathryn, Hastings  
 McCallum, Mabel Elsie, Hastings  
 McCann, Nellie Lucille, Litchfield  
 McCarthy, Alice M., Stillwater  
 McCartney, Ralph Laverne, Ogilvie  
 McCauley, Lucile, Minneapolis  
 MacDonald, Doris Ethel, Crookston  
 MacDonald, Hattie Vera, St. Paul



McDonald, Sarah Agnes, Stillwater  
 McFaul, John Francis, DeGraff  
 McGee, Marjorie Annetta, Stillwater  
 McGran, Florence Agnes, Perham  
 McKenzie, Gladys Mae, Sartell  
 McKenzie, Grace Irene, Princeton  
 McKnight, Mary Salome, Stillwater  
 McLeod, Ann Marie, Annandale  
 McMahan, Hazel Florence, Riverton  
 McNabb, Watis William, Elk River  
 McNelis, Grace Mary, Beardsley  
 Mader, Susana Maria, Nashwauk  
 Maehren, Adelaide Augusta, St. Cloud  
 Magdanz, Gretchen Anna, Hutchinson  
 Mahlum, Howard Jerome, Brainerd  
 Maihs, Martha Anna, St. Cloud  
 Mainz, Madeline Josephine, Hastings  
 Manning, Etta Amelia, Osakis  
 Marshall, Pearl Florence, Howard Lake  
 Marston, Sarah Katherine, Hubbard  
 Martin, Alice Estella, Fergus Falls  
 Martin, Elizabeth, Hinckley  
 Martin, Mary Veronica, Litchfield  
 Maus, Gertrude Anne, Watkins  
 Maus, Julia Agnes Theresa, Watkins  
 Meier, Elizabeth, Holdingford  
 Meixner, Mabel Farnsworth, St. Paul  
 Merle, Helen Elisabeth, Echo  
 Merrifield, Alberta Marie, St. Cloud  
 Merrill, Alice Jane, Silver Lake  
 Mertes, Veronica, Watkins  
 Metelak, Kate Emma, Brownton  
 Mielke, Ellen Alice, Swanville  
 Miller, Diana, Winona  
 Miller, Dorthea Julia, Brewster  
 Miller, Margaret Violet, Faribault  
 Miller, Vera Ada, Anoka  
 Milton, Janice Thelma, Minneapolis  
 Minter, Ida Margaret, Minneapolis  
 Mitchell, Bessie La Vanche, Mpls.  
 Mix, Helen Marie, St. Cloud  
 Moe, Lillian Joyce, Milaca  
 Mogdal, Myrtle, Fergus Falls  
 Molen, Agnes Marie, Brandon  
 Mollerstrom, Melinda Agnes, Henning  
 Monson, Edna Jeanette, Grove City  
 Montgomery, Donna, Hill City  
 Moore, Bernice Evelyn, Minneapolis  
 Moran, Genevieve Irene, Delano  
 Moran, Margaret E., Delano  
 Morgan, Vira Edithe, Pipestone  
 Morrow, Marvel Ruth, Lake City  
 Mortenson, Lucille Antoinette, Mpls.  
 Muckenhirn, Clara Anna, Delano  
 Mudd, Lura Isabelle, Clearwater  
 Murphy, Alice Agatha, Annandale  
 Murphy, Ione Catherine, St. Cloud  
 Murray, Elaine Margaret, Darwin  
 Murray, Harriet Anna, Howard Lake  
 Murray, Jennie Alta, Pequot  
 Murtaugh, Esther Blanche, Fairmont  
 Mutz, Freda Iola, Williston, N. D.  
 Myklebust, Signe Marie, Trosky  
 Myllykangas, Martha, Annandale  
 Myott, Edmund Louis, Wadena  
 Nachlor, Bernice Claire, Herman  
 Nason, Mildred, Pipestone  
 Nelsen, Alice Marie, Hutchinson  
 Nelson, Bertha Elvira, Little Falls  
 Nelson, Claire Lucile, Spicer  
 Nelson, Doris Evelyn, Foreston  
 Nelson, Marguerite, Mahnoman  
 Nelson, Mildred Emma, Oak Park  
 Nettetstad, Dorothy, Pelican Rapids  
 Neuman, Rhoda Grace, Minneapolis  
 Newland, Carol, Minneapolis  
 Newman, Ethel Sadie Dora, Willmar  
 Nickisch, Elsie I., Ortonville  
 Nieman, May Ellen, Little Falls  
 Noonan, Ellen Cecilia, Morris  
 Nordberg, Irene Helen, St. Cloud  
 Norris, Gladys Hannah, New London  
 Novotny, Charlotte, Maple Lake  
 Nuses, Matt Joseph, Wadena  
 Nybakke, Richard Elmer, Foley  
 Nylen, Violet Myldred, Little Falls  
 O'Bleners, Kate, Red Wing  
 O'Connor, Mary Patricia, St. Cloud  
 O'Dougherty, Hortense, Maple Lake  
 Oberg, Elaine Mildred, St. Paul  
 Oliver, Erma Elizabeth, Onamia  
 Ollila, Helen S., Crosby  
 Olson, Clara Amanda, Georgeville  
 Olson, Della Sophie, Belgrade  
 Olson, Helen Nielsina, Swanville  
 Olson, Hilder Victoria, Park Rapids  
 Olson, Inez Rosemary, Virginia  
 Olson, Isabel Delila, Chokio  
 Olson, Myrtle Bernadean, St. Paul  
 Olson, Olive Marie, Aldrich  
 Orr, Beronice Bluebell, Eagle Bend  
 Page, Marlys (Mrs.), Minneapolis  
 Pallansch, Theresa, Chisago City  
 Pallin, Florence Ann, Madison  
 Pallin, Julia Pearl, Madison  
 Palm, Ida Mable, Loman  
 Palmersheim, Marie, Sauk Rapids  
 Parent, Myrtle Jestine, Parent  
 Parker, Barbara Myrtle, Minneapolis  
 Parker, Eleanor Gail, Minneapolis  
 Parker, Kathleen, Blackduck  
 Parkinson, Mildred Eunice, Monticello  
 Peavey, Harold J., St. Paul  
 Pericle, Eva Edythe, Hutchinson  
 Perkins, May Alice, Wadena  
 Perry, Nesbitt Irene, Virginia  
 Petersen, Florence Minnie, Murdock  
 Petersen, Margaret Carolyn, St. Cloud  
 Peterson, Alma, Ronneby  
 Peterson, Alma Ingaborg, Upsala  
 Peterson, Antoinette, Raymond  
 Peterson, Arthur, Mizpah

Peterson, Bessie Marie, Osakis  
 Peterson, Edna Corellie, Henning  
 Peterson, Evelyn Caroline, Virginia  
 Peterson, Ione, Villard  
 Peterson, Minnie Lavina, Mizpah  
 Peterson, Pearl, Northwood, N. D.  
 Phelps, Orin, Brook Park  
 Picha, Martha Lilly, Hopkins  
 Piehl, Bertha Louise, Aitkin  
 Pilgrim, Florence, Minneapolis  
 Plombon, Genevieve Marie, Foley  
 Plombon, Mary Magdalene, Foley  
 Pogreba, Laura Augela, Delano  
 Pollock, Pauline Teresa, Royalton  
 Poole, William Henry, Truman  
 Poppler, Lenore Gladys, Chaska  
 Potter, Beatrice Anne, Cass Lake  
 Potter, Ethel Irene, Jeffers  
 Powers, Esther Mildred, Barrett  
 Prairie, Lillian Alice, Marshall  
 Purdy, Zaida RONALDA, Pembina, N. D.  
 Quale, Stella Bertina, Nevis  
 Qualen, Alice Ida, Staples  
 Quamme, Valborg Variola, Sunburg  
 Quinn, Teresa, Litchfield  
 Rabideau, Helen Grace, Virginia  
 Radtke, Sarah Violet, Buffalo Lake  
 Raffaell, Zeila, Sauk Rapids  
 Ramsey, Selmer A., Sauk Rapids  
 Ramstad, Edna C., Sunberg  
 Rardin, Nellie Irene, Brainerd  
 Rasing, Ruth Marie, Chokio  
 Rasmussen, Dorothy, Brainerd  
 Rea, Alfred Emerson, Minneapolis  
 Reamer, Chester O., Minneapolis  
 Reck, Lyla Evelyn, Cavalier, N. D.  
 Reichensperger, Helen Belle, St. Cloud  
 Reishus, Edna Olympia, Hanley Falls  
 Remick, Stella Mary Louise, Hibbing  
 Remmele, Gladys Florence, Echo  
 Rice, Frank Ferdinand, Wadena  
 Rice, Helen Judlang, Roseau  
 Rider, Vera Elizabeth, Langdon, Ia.  
 Riley, Mary (Mrs.), St. Cloud  
 Risner, Ray Milton, Watkins  
 Roberts, Mary, Buhl  
 Robinson, Ruby Ethel, Pine City  
 Roche, Bernadette Berthe, Avon  
 Roche, Eileen Anne Mary, St. Cloud  
 Rodeman, Bertha, Sauk Rapids  
 Rogge, Minnie Eva, Burtrum  
 Rohlf, Adelaide Louise, Rush City  
 Romann, Emma Sophia, Perham  
 Rorvick, Frieda Angonnette, St. Paul  
 Rosenau, Elsie May, Sauk Centre  
 Ross, Geraldine Alice, Montrose  
 Rourke, Adeline Veronica, Waubun  
 Routsinoji, Allie G., Kimball  
 Rowe, George M., Gemmill  
 Rowles, Mary Magdalene, Hancock  
 St. John, Evelyn Irene, Minneapolis  
 Saari, Hilma Julie, Sebeka  
 Saari, Ingrid Marie, Hibbing  
 Sack, Lillie Esther, Roscoe  
 Sandbrink, Grace Edith, Melrose  
 Sandbrink, Hyacinth, Melrose  
 Sartell, Elsie May, Sartell  
 Sather, Blanche Minnie, Canby  
 Savage, Sadie Dell, Waite Park  
 Scanlon, Blanche Margaret, Buffalo  
 Scanlon, Julia Myrtle Mary, Buffalo  
 Scepanick, Rose Angeline, Swanville  
 Schechter, Dorothy, Hancock  
 Schlagel, Cecilia Mary Agatha, DeGraff  
 Schlagel, Sophia Mary, Winsted  
 Schlerman, Mary A., Owatonna  
 Schlick, Emily Charlotte, Paynesville  
 Schmid, Harry Charles, Avon  
 Schmidt, Joseph Julius, Elrosa  
 Schmitz, Vera A., Belgrade  
 Schneider, Catherine Louise, St. Cloud  
 Schnyders, Joe Peter, Edgerton  
 Schoelkopf, Retta Belle, St. Cloud  
 Schoener, Esther, St. Cloud  
 Schrepel, Paul Henry, Wadena  
 Schultz, Francesca Martha, Correll  
 Schultz, Harriet Beatrice, St. Cloud  
 Schultz, Vera Maria, Pequot  
 Schuppell, Gertrude, Minneapolis  
 Schwab, Alice (Mrs.), Elk River  
 Schwartz, Donald Albert, St. Cloud  
 Schwartzbauer, Gertrude, McGrath  
 Schwartzbauer, Louise, McGrath  
 Seibel, Anita Wilhelmina, Montrose  
 Senzek, Augusta Helen, Sauk Rapids  
 Shanahan, Gertrude Marie, Marshall  
 Shanedding, Marion, Virginia  
 Sheets, Leila Margaret, Villard  
 Sheggeby, Bernice, Sacred Heart  
 Sherer, Arvilla Claretta, Sartell  
 Sherman, Cassie, Brook Park  
 Shrode, Ethel Mabel, Princeton  
 Shropshire, Bertha, Minneapolis  
 Siegers, Elizabeth, Maple Lake  
 Sister Agatha Zaczkowski, St. Cloud  
 Sister Agnita Orth, St. Cloud  
 Sister Alice Bussen, St. Joseph  
 Sister Ardis Hartman, St. Joseph  
 Sister Arnolda Daniel, St. Cloud  
 Sister Benita Winker, St. Joseph  
 Sister Bertilia Snyder, St. Joseph  
 Sister Carina Julig, St. Joseph  
 Sister Carla Kessler, St. Joseph  
 Sister Cleone Burnett, St. Cloud  
 Sister Consuello Keaveny, St. Joseph  
 Sister Decora Kaliher, St. Joseph  
 Sister Edwin Sieben, St. Joseph  
 Sister Elmarie Steichen, St. Joseph  
 Sister Gerardine Wilkes, St. Cloud  
 Sister Germaini Van Sloun, St. Joseph  
 Sister Gervase Meyer, St. Cloud  
 Sister Helen Kranz, St. Joseph

Sister Lewine Zimmerman, St. Joseph  
 Sister Ludwina Kopka, St. Cloud  
 Sister Odila Goeden, St. Joseph  
 Sister Ottilia Heibel, St. Joseph  
 Sister Rosetta Jeub, St. Joseph  
 Sister Sylvina Ettel, St. Joseph  
 Sister Theonilla Ziegler, St. Cloud  
 Sister Theora Dillenburg, St. Joseph  
 Sister Theresia Ademmer, St. Cloud  
 Skaalen, Gena Alvina, Boyd  
 Skagen, Clara, Kenyon  
 Skarsten, Georgia Josephine, Staples  
 Skarsten, Selma Carolyn, Staples  
 Skibba, Agnes, Buhl  
 Skoglund, Ada Jeanette, Starbuck  
 Skold, Pauline Odell, Cokato  
 Slamnik, Gertrude Hyacinth, Rice  
 Smith, Evelyn Eliza, Swanville  
 Smith, Evelyn, Minneapolis  
 Smith, Helen Ethel, Minneapolis  
 Smith, Hilda Evaline, Minneapolis  
 Smith, Hilda Olivia, Henning  
 Smith, Lyla Grace, Wahkon  
 Smith, Marguerite, Minneapolis  
 Solomonson, Alice Marie, Minneapolis  
 Sommer, Bertha Neomi, Danvers  
 Sorenson, Dagmar Colleen, Villard  
 Sorenson, Vernie, Becker  
 Souba, Theresa Mary, Hopkins  
 Spielman, Margaret Alvira, Foley  
 Sprague, Dorothy Irene, St. Cloud  
 Stake, Ruth Harriet, Anoka  
 Staples, Lois Ione, St. Cloud  
 Staudenbaur, Marie Helen, Jeffers  
 Stauffer, Mabel Ellen, Glenwood  
 Steffenson, Lenora Sophia, Anoka  
 Steffenson, Lurena Geneva, Anoka  
 Steil, Flora Catherine, Bird Island  
 Steinmetz, Agnes Barbara, Waubun  
 Stelzig, Zella (Mrs.), Waite Park  
 Stevens, Birdeene Marie, Alexandria  
 Stoebe, Marguerite, White Rock S. D.  
 Stoep, Margaret, Minneapolis  
 Stone, Estelle Joy, Newport  
 Stotko, Gertrude Marie, Montrose  
 Stratton, Mary Ann, Akeley  
 Stroh, Esther Olive, Waite Park  
 Strong, Nydia Ellen, Herman  
 Struthers, Olive Eunice, Clarissa  
 Sullivan, Julia Marion, Minneapolis  
 Sullivan, Margaret, St. Cloud  
 Sundblad, Harriet Helen, Alexandria  
 Sundell, Lempi Elizabeth, Aurora  
 Sundstrom, Alta Engeborg, Mora  
 Sutherland, Eldora Belle, Hasty  
 Sutherland, Maymie, Hasty  
 Sutherland, Stacia Alma, Hasty  
 Swanson, George Leonard, Grove City  
 Swanson, Helen Virginia, Braham  
 Swanson, Myrtle Evelyn, St. Cloud  
 Swanson, Selma Mathilda, Lincoln  
 Swanson, Violet Adeline, Kerkhoven  
 Swanstrom, Ruth, Greenbush  
 Swenson, Rhoda Elvera, Bertha  
 Swenson, Ruth Elizabeth, Minneapolis  
 Swingley, Jennie Delores, Clear Lake  
 Talbert, Dorothy Garnet, Long Lake  
 Talbert, Wilhelmina Viola, Long Lake  
 Tammen, Anna May, Clara City  
 Tatting, Fred W., Olivia  
 Taylor, Gladys Louise, St. Paul  
 Taylor, Harriett Marie, Howard Lake  
 Teigen, Evelyn Adeline, Lowry  
 Thayer, Lela Maude, Minneapolis  
 Then, Agnes Cecilia, Hastings  
 Then, Emma Louise, Hastings  
 Thoennes, Belle Katherine, Ogema  
 Thom, Martha Matilda, Long Prairie  
 Thom, Maybell Albina, Wadena  
 Thompson, Alice Mary, Onamia  
 Thompson, Josephine Inger, Sunberg  
 Thomssen, Lucy Emma, St. Paul  
 Thorene, Irene Cecelia, Stillwater  
 Tieman, Ida Alice, Royalton  
 Tindle, Isabel Janet, Sauk Rapids  
 Toerner, Rosella Katherine, Buffalo  
 Torborg, Bernard, Roscoe  
 Torkelson, Jewell Lynette, Badger  
 Townsend, Myrtle Frances, Monticello  
 Traff, Margaret Helen, Minneapolis  
 Trebby, Mariam, St. Cloud  
 Tryggseth, Alice Catherine, Echo  
 Turnquist, Emily, Buhl  
 Tuttle, Bessie (Mrs.), St. Cloud  
 Tweet, Caroline Ann, Lismore  
 Twist, Adelia Sophia, St. Cloud  
 Twist, Luella Beietta, St. Cloud  
 Tyllia, Anna Georgiana, Minneapolis  
 Ugland, Mary Irene, Mora  
 Urbansky, Emmaline, Swanville  
 Vander Hagen, Martinia, Loretto  
 Vandersluis, Jet Louise, Sauk Rapids  
 Vangstad, Lena, Osakis  
 Vanselow, Viola Sue, St. Cloud  
 Vaughan, Anna Margaret, Waverly  
 Vaughan, Irene Augusta, Wahkon  
 Velcheck, Agnes Dorothea, Thorpe  
 Velensky, Rose, Minneapolis  
 Vennewitz, Lois Elizabeth, Alexandria  
 Vos, Eleanor Mary, Holdingford  
 Wagner, Doris Eileen, Minneapolis  
 Wagner, Dorothy, Minneapolis  
 Wagner, Florence, St. Joseph  
 Waldorf, Hattie Elizabeth, Waubun  
 Walters, Mary Ann, Watkins  
 Ware, Frances Louise, Morris  
 Warness, Elinor, New London  
 Warness, Myrtle, New London  
 Waxlax, Mabel Marie, Two Harbors  
 Weber, Caroline Theresa, Watkins  
 Weldele, Minnie Genieve, Buffalo  
 Welle, Florence Marie, Melrose

Welle, Monica, Melrose  
 Welliver, Mabelle Inez, Eden Valley  
 Westerdahl, Ethel Minnie, Cokato  
 Westerdahl, Lillian Mary, Cokato  
 Westin, Alice, Herman  
 Westrom, Marie Josephine, St. Cloud  
 White, Florence Helen, Burtrum  
 White, Richie Maud, St. Paul  
 Whitman, Lucille Elenanor, Avon  
 Wicke, Helen, St. Cloud  
 Wicktor, Clarence Alfred, Princeton  
 Wiederhold, Clara, Vermillion  
 Wiehoff, William George, St. Cloud  
 Wiley, Cora Ethel, Oak Park  
 Wing, Glen Charles, Brewster  
 Winter, Vida M., Minneapolis  
 Witzleben, Agnes, Fort Yates, N. D.  
 Wogan, Alfie Rogne, Montevideo  
 Wolfe, Bernice Lucille, Alexandria

Wolter, Delphine, St. Paul  
 Wolter, George Leo, Melrose  
 Wood, Ellen Christine, Elcor  
 Woodbury, Gladys, Page, N. D.  
 Woodrow, Dortha, Ogilvie  
 Wotzka, Margaret, Flensburg  
 Wright, Bessie Louise, Montrose  
 Wright, Ethel Laura, Ogilvie  
 Wyman, Orabelle, Anoka  
 Wyman, Violet, Northwood, N. D.  
 Yost, Katherine, Red Wing  
 Young, Gaus Wesley, Long Prairie  
 Younk, Clara, Royalton  
 Younk, Elizabeth Marie, Royalton  
 Zarnes, Vernon Edward, Swanville  
 Zeller, Edna Marie, Alexandria  
 Zeltinger, Louise, Tolley, N. D.  
 Zenner, Kilian Henry, Genola

#### FOURTH-YEAR CLASS

##### FIVE-YEAR COURSE

Armstrong, Lillian, Humbolt  
 Cameron, Beatrice B., Sauk Rapids  
 Corrigan, Frances Evelyn, Parent  
 Dalager, Lavilla Caroline, Glenwood  
 Ekblad, Ruth Sigrid, Forest Lake  
 Engen, Myrtle Margaret, Braham  
 Falconer, Ida (Mrs.), Minneapolis  
 Farris, Margaret Fidelia, Becker  
 Hall, Lilly, (Mrs.), St. Cloud  
 Hanson, Anna T., Dawson

Johnson, Esther Theresa, Forest Lake  
 Odney, Lulu Idella, Benson  
 Olson, Clara S., St. Cloud  
 Russell, Blanche Alma, Little Falls  
 Skinner, Nellie Ione, Royalton  
 Slivnik, Johanna Gyzella, Rice  
 Stauff, Cameron Blanche, Sauk Rapids  
 Streitz, Louise Antonette, Richmond  
 Thomas, Margaret Ellen, St. Cloud  
 Wilkowski, Rosalia Julia, Perham

#### THIRD-YEAR CLASS

##### FIVE-YEAR COURSE

Barrett, Veronica Frances, St. Cloud  
 Beck, Madge Marie, Verndale  
 Corrigan, Genevieve Grace, Parent  
 Donovan, Katherine Ellen, Foley  
 Dreis, Rose Marie, Minneapolis  
 Fiske, Katherine, Browns Valley  
 Freed, Ted Bailey, St. Cloud  
 Hall, Margaret Anna (Mrs.), Randall  
 Heid, L. Dorothy, St. Cloud  
 Henneman, Kathryn, Eden Valley  
 Jacobs, Clara Margaret, Richmond  
 Knight, Marguerite, Taylors Falls  
 Korn, Alice M., Clara City  
 Kruchten, Joseph P., Richmond  
 Kutzman, Elizabeth Matilda, Avon

McCann, Anna, Staples  
 Mapes, Myrtle Laura, Watertown  
 Maus, John A., Watkins  
 Murn, Frances R., Parent  
 Noe, Johanna (Mrs.), Waite Park  
 Nolan, Inez May, Waite Park  
 Parent, Edith Katherine, Parent  
 Parent, Florence G., Parent  
 Rauch, Marie A., Genola  
 Roche, Lucille Marguerite, St. Cloud  
 Schmidt, Julius, Elrosa  
 Tschumperlin, Barbara, Richmond  
 Urbaniak, Stella Mary, St. Cloud  
 Van Nurdén, Adaline Wilma, Watkins  
 Whitman, Irene Marie, Avon

#### SECOND-YEAR CLASS

##### FIVE-YEAR COURSE

Adelman, Frances Johanna, Foley  
 Baas, Anna Alina, New York Mills  
 Behmer, Carmen Nodzy, Princeton  
 Blanchard, Alice M. B., Rice  
 Blenker, Mary, Albany  
 Borgan, Phemie Juella, Appleton

Conroy, Kathryn Ellen, Morris  
 Crosby, Edith Pearl, Rice  
 Donovan, Rose Elizabeth, Foley  
 Erickson, Inga Carolina, Osakis  
 Haehn, Henry Benedict, Roscoe  
 Hurley, Martha Margaret, Little Falls



Johnson, Herbert E., St. Cloud  
 Keppers, Marcella Marie, Avon  
 Kosel, Hildegard Rose, St. Joseph  
 Kruchten, Benedict G., St. Cloud  
 Kutzman, Ida Marie, Avon  
 Piculell, Grace (Mrs.), Stillwater  
 Richard, Mary Magdalen, St. Cloud

Ritter, Rose Mary, Avon  
 Roche, Hazel Kathryn, St. Cloud  
 Schmitz, Christina, Belgrade  
 Skiba, Clara Margaret, Foley  
 Teders, Clara Catherine, St. Cloud  
 Theisen, Anton, Richmond

## FIRST-YEAR CLASS

### FIVE-YEAR COURSE

Agather, Meta Marie, Sauk Rapids  
 Anderson, Bertha Irene, Starbuck  
 Anderson, Esther Marie, Excelsior  
 Ashbaugh, Harold Bartlett, Murdock  
 Baker, Edith Janette, Aitkin  
 Boerger, Katharine Elizabeth, Albany  
 Borton, Ruby Christine, Osakis  
 Burns, Catherine Mary, Watertown  
 Casper, Eunice Erma (Mrs.), Milaca  
 Cassidy, Elizabeth, Minneapolis  
 Colling, Verona Justine, Mazeppa  
 Crosby, Etta (Mrs.), Rice  
 De Laurier, Lydia Ann, Long Prairie  
 Drager, Sylvia Lorinda, Sauk Centre  
 Dykeman, Ruth, Dykeman  
 Fenlason, Lois Jean, St. Cloud  
 Frame, John Selby, St. Cloud  
 Gerstenkorn, Clara Ann, Georgeville  
 Gilbertson, Olga (Mrs.), Montevideo  
 Hammond, Marion Elaine, St. Cloud  
 Hanson, Mary C., Brager  
 Imm, Arthur Julius, Brainerd  
 Iverslie, Gena Andrea, Georgeville  
 Johnson, Aines M., Vining  
 Jungels, James, Richmond  
 Lewis, Nellie Pearl, Bertha  
 Lewis, Olga Cora Frieda, Bertha

Loom, Violet (Mrs.), Brainerd  
 McIntyre, Anna (Mrs.), N. St. Paul  
 McIntyre, Jean Frances, N. St. Paul  
 McIntyre, Margaret Anne, N. St. Paul  
 Muckala, Frances, New York Mills  
 Murn, Medora Frances, Foley  
 Murphy, Thomas Albert, Browerville  
 Nelson, Alice Esther, Eagle Bend  
 Nelson, Anna E., Wendell  
 Norquist, Calla Madelia, Roseau  
 O'Connor, Dagny (Mrs.), St. Cloud  
 O'Driscoll, Cecile Grace, Little Falls  
 O'Neill, Laura Louise, St. Paul  
 Robertson, Gertrude Agatha, Hinckley  
 Rogge, Gertrude Elnora, Burtrum  
 Sands, Marie Angelus Rita, Adrian  
 Sister Elaine Keohen, Altoona, Wis.  
 Smart, Zella Myrtle, Sauk Rapids  
 Smedsrud, Mary (Mrs.), Benson  
 Stewart, Blanche, McGregor  
 Storaker, Petra Helene, Montevideo  
 Thielman, Philip Leonard, St. Cloud  
 Thompson, Lily May, Delano  
 Vig, Bernie Annette, Belgrade  
 Walz, Veronica Margaret, Watkins  
 Weber, Nicholas K., Freeport



## Minnesota Counties Represented

[illegible]

## Summary of Enrollment

(Including the Summer Session of 1924)

### College Department

#### Two-Year Course—

Senior Class.....	668
Junior Class.....	1005
	—

1673

#### Five-Year Course—

Senior Class.....	24
Junior Class.....	20
Third-Year Class.....	30
Second-Year Class.....	25
First-Year Class.....	53
	—

152

Special Students.....	14
Industrial Arts.....	61
Music.....	31
	—

106

Total number of men enrolled.....	236
Total number of women enrolled.....	1695
Diplomas awarded.....	402

Total.....

1931

### Training Department

Eighth Grade.....	22
Seventh Grade.....	20
Sixth Grade.....	39
Fifth Grade.....	28
Fourth Grade.....	35
Third Grade.....	38
Second Grade.....	40
First Grade.....	34
Kindergarten.....	40
	—

296

37 grades in city schools, about.....	1050
	—

1346



**TO BE FILLED OUT BY STUDENT**

I am.....years of age and I am in good health. I have no physical deformity.

It is my intention to enter the St. Cloud State Teachers College at the beginning of the.....quarter, 192.....

Signed.....

---

**TO BE FILLED OUT BY HIGH-SCHOOL PRINCIPAL****OR SUPERINTENDENT**

In my opinion M.....  
whose scholastic record is found on the reverse side of this page is a person of good character and proper social habits. I recommend that this student be permitted to enter the St. Cloud State Teachers College and I believe the student is a worthy representative of this school and will make a satisfactory record.

Signed.....

Dated.....192..... Position.....



LAWRENCE HALL



SHOEMAKER HALL