


4-1982

# Information Media Newsletter Vol. 15 No. 1

St. Cloud State University

Follow this and additional works at: [https://repository.stcloudstate.edu/im\\_newsletter](https://repository.stcloudstate.edu/im_newsletter)

 Part of the [Instructional Media Design Commons](#), [Other Education Commons](#), and the [Training and Development Commons](#)

---

## Recommended Citation

St. Cloud State University, "Information Media Newsletter Vol. 15 No. 1" (1982). *Information Media Newsletter*. 87.  
[https://repository.stcloudstate.edu/im\\_newsletter/87](https://repository.stcloudstate.edu/im_newsletter/87)

This Newsletter is brought to you for free and open access by the Department of Information Media at theRepository at St. Cloud State. It has been accepted for inclusion in Information Media Newsletter by an authorized administrator of theRepository at St. Cloud State. For more information, please contact [rswexelbaum@stcloudstate.edu](mailto:rswexelbaum@stcloudstate.edu).

# IM NEWS

April, 1982 Volume XV Number 1

An Information Media Newsletter published by the Learning Resources Center and the Center for Library and Audiovisual Education/Centennial Hall, St. Cloud State University.

## FROM THE DEAN'S CHAIR

The appearance of the IM News may have brought the question of, "How come I didn't receive the fall or the winter issue of the news?", to your mind. If perchance that question was raised, rest assured that the problem lies in the publishing sector and not with the mails or mailing lists. Very few of us have been unaffected by the struggling economy and Learning Resources Services and the Center for Library and Audiovisual Education at St. Cloud State is no different. It has been hit hard by budget cuts. Although the Learning Resources Services program is not in danger of collapse at this time, serious service shortcomings are developing. One curtailed service is the ability to communicate with our external publics. Our inability to print the IM News is only one example of our frustrations in this area.

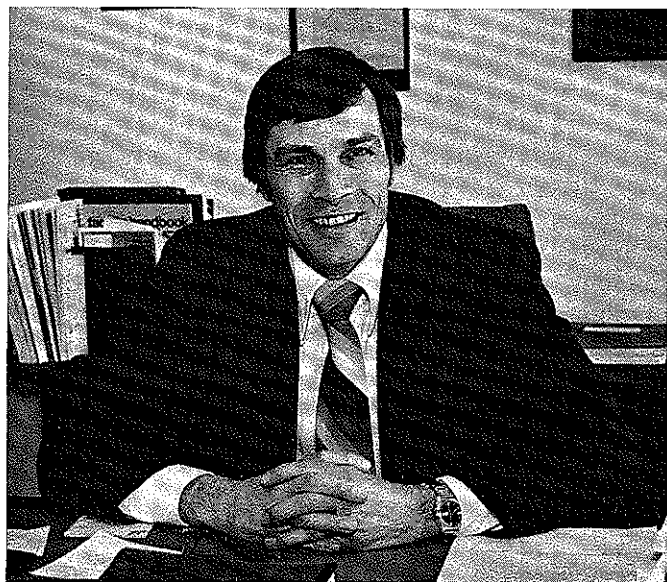
While the limitations of the IM News provides one small example of our frustrations, every gathering of media professionals provides horror stories of schools with substantial program cuts due to staff cutbacks and lack of funds to purchase materials and equipment. The staff cuts are especially

painful when they involve a creative and productive colleague. It would be easy to sit back and despair, but those who retain their positions must not succumb to such a temptation. It would be unfair to all concerned--the profession, the students and teachers, and other clients.

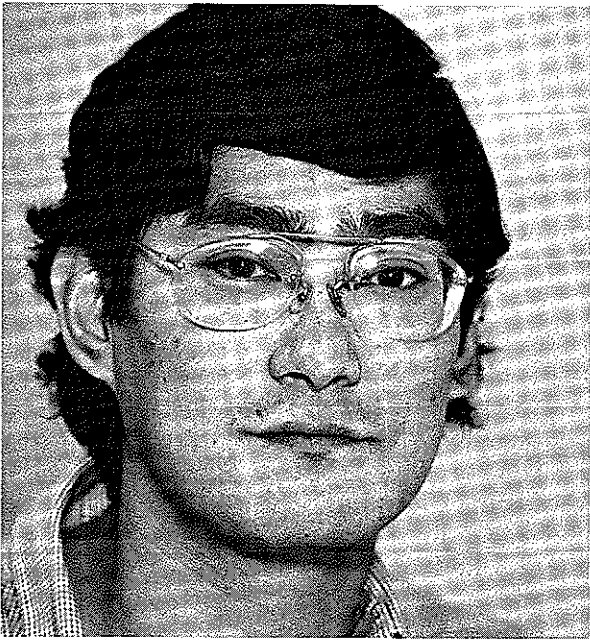
Our predecessors have provided us with a good professionally based foundation. That foundation was not built without some severe hardships and personal sacrifices. Now it is our turn, for difficult times require professionals to be even more thoughtful as well as decisive. Objectivity should be the order of the day. We cannot avoid the question of "Why are we doing this?" or "Is this what is truly need"? Some segments of our academic background which were of little use to us during good times must now be recalled and put to use because major decisions will revolve around the establishment of priorities. We have seldom been called upon to do this to the extent that we will be required to during the next few years.

It is time to put our abilities to work for the continuance of good education. We may have to sacrifice some of our favorite professional activities because they are of a lower priority than something we enjoy doing less, but has a higher priority. The future of media in schools depends on our willingness to prepare an appropriate list of priorities. If we do not read our constituencies and situations accurately, media programs will suffer even greater losses.

Remember those who are being cut suffer a far greater personal loss than those of us who remain. Rightly or wrongly the future of quality media programs is entrusted to those who remain. This should be considered a supreme challenge to professionals who will continue to sign their names to a contract for employment as a media specialist.



JOHN BERLING



WELCOME TO DR. STEVEN KOYAMA

Steven Koyama has joined our faculty in the Center for Library and Audiovisual Education. Steve comes to us from Seattle, Washington where he received his Ph.D. from the University of Washington. His doctoral research involved the persuasive effects of videotaped messages upon various personality types. The results indicated that a production characteristic of the medium could differentially influence viewers dependent upon their backgrounds.

Steve indicated to us that he has other interests outside the world of academia. He enjoys playing tennis, hiking, photography and three-star chili.

Steve has lived on both coasts from Baltimore to Seattle. This is his first time in the Midwest and he was "happy to find that people in Minnesota are exceptionally friendly and warm."

ST. CLOUD STATE UNIVERSITY FOUNDATION  
ASSISTS CENTER

The Center for Library and Audiovisual Education was the recipient this year of an Apple microcomputer provided by the St. Cloud State University Foundation. The Apple microcomputer will be used to supplement the number of Apple microcomputers already in the Center for use in the class IM 445-545 Microcomputers in Classrooms and Media Centers. The Foundation also provided the Center with funds to purchase four journals dealing with microcomputers.

Computerized literature searching is a fee-based service currently available at Learning Resources Services (LRS). This online service accesses the databases available through Bibliographic Retrieval Services, Inc. (BRS) to provide computer-assisted searches of the existing literature.

Databases are computer files used to produce the printed indexes, abstracts and bibliographies. For example, the computer files of the ERIC database are used to produce the printed Research in Education Index and the Current Index to Journals in Education. These printed indexes, available in LRC, may then be used to manually search a topic.

To search the computer files of the ERIC database, a search request, stating the topic, is submitted to a reference librarian, who devises a search strategy to retrieve the desired information from the database. A computer terminal is used to transmit the search strategy from the LRC to a computer based in New York (in the case of BRS). Relevant citations are identified, a printoff is requested, and the resulting bibliography is printed offline and mailed to the LRC. Where available, these citations may include a complete abstract. This option occurs only if the database producer has included abstracts in the computer files of that particular database. The requestor then retrieves the search results at the Periodicals Desk in LRC. In the example given, a search of the computerized ERIC database would retrieve citations complete with abstracts from both of the indexes mentioned. Search request forms may be obtained at the Reference Desk.

An effective computer search depends on whether the topic being searched lends itself to coverage by a particular database. Some topics may be searched on several databases while others are not presently covered by an existing computerized file.

The fee structure for this service is based on a "per database" charge and reflects the amount of time spent online and the number of citations requested in the printout. A fee schedule listing current charges and database online is on file at the Reference Desk.

Phi Delta Kappa, a professional education fraternity, honored Tony Schulzetenberg, Center for Library and Audiovisual Education, at the group's 38th biennial council October 22-25 in Chicago.

The award was given for editing an outstanding chapter newsletter while serving as editor of the university's newsletter during the 1980-81 academic year. A total of 102 chapters entered the contest. St. Cloud State University was one of eleven judged as outstanding from across the United States; of even greater significance is the fact that St. Cloud ranked third out of the eleven.

David Rydberg also of Learning Resources and the Center for Library and Audiovisual Education served as president of Phi Delta Kappa, St. Cloud University Chapter during the 1980-81 year.



DAVID RYDBERG AND TONY SCHULZETENBERG

#### NCATE VISIT

The National Council for the Accreditation of Teacher Education was on our campus March 15-17, 1982 to reaccrediate advanced degrees in the College of Education. Both the master's and specialist's degrees in the Information Media program were evaluated. Team members were Clarence Olsen, Chicago State University; Donald Lacock, University of Wisconsin-La Crosse; Judith Wain, Minnesota State Department of Education; and team chairperson Richard Birch, California State College (PA).

Earlier this year the Minnesota State Department of Education also did a review of all coursework that pertained to teacher licensure endorsement.

#### LUTHER BROWN SCHOLARSHIP FUND ANNOUNCED

The Center for Library and Audiovisual Education and the St. Cloud State University Foundation are pleased to announce the establishment of the Luther Brown Scholarship Fund. The purpose of the fund is to encourage and assist students in pursuing graduate work in the area of Library and Audiovisual education at St. Cloud State. In establishing the Fund, Dr. Luther Brown, who is Dean Emeritus of Learning Resources and Chairman of the Center for Library and Audiovisual Education, is encouraging the development of leadership qualities among graduate students interested in or pursuing a degree at St. Cloud State. Dr. Brown is a long time active member of AECT and a charter member of DSMS. He currently serves on the DSMS nominating committee. Contributions to the fund can be made payable to the St. Cloud State University Foundation Luther Brown Scholarship Fund. Inquiries should be directed to John G. Berling, Dean, Learning Resources Services, St. Cloud State University, St. Cloud, Minnesota 56301 (Phone: 612--255-2022).

#### PHOTO TOUR OF NORTHERN MINNESOTA

The famous IM 510 Photo Tour of Northern Minnesota had its finest tour during summer Session I, 1981. Visiting local sites, Duluth, Gooseberry Falls, Iron Range Interpretative Center, and Itaska State Park, provided opportunity to use both indoor and outdoor slide photography techniques for creating photography techniques for creating several different kinds of instructional slides. Special topics such as composition, lighting, filters, and close-up photography were discussed, demonstrated, and practices. Good processing lab support provided opportunities for same-day analysis and critique.

We hope to repeat this tour next summer and, perhaps, offer a more extensive tour to the South Dakota Badlands and the Black Hills. Look for details in future publications. Enrollment is limited; we trust that the demand will be high.

## LOCAL AND MINNESOTA INFORMATION

"Is their really a 'Stearns County Syndrome' and where can I find a discussion of it?" "Who was the leader of the 'Willmar 8'?" "How many health studies have been conducted on the Central Minnesota Power Line?"

These and many similar questions on local and Minnesota subjects are asked daily of Learning Resources Services Reference Staff members, unfortunately, the answers and the locating of sources and data to substantiate the answers are not always readily accessible through conventional cataloging and indexing systems. Many times the most comprehensive, reliable, and up-to-date information on local and Minnesota topics are found, not in books or magazines, but in newspapers, particularly weekly newspapers, in limited distribution documents and pamphlets, in unpublished manuscripts, in various media formats, audiotape, film (the most comprehensive, documented source of information on the nationally famous Willmar Bank Strike of the late 1970's is a film), and video, and through people (often the only source of accurate data is a person responsible for or connected with an event or subject) and organizations.

Since the mid-1960's several actions have been taken to insure that local and Minnesota information resources were available through Learning Resources Services. Those include comprehensive attempts to collect local publications and a major oral history project.

Three years ago the decision was made that Learning Resources Services at St. Cloud State University could best serve the local and Minnesota information needs of students, faculty, and the larger research community of Central Minnesota and the state by acting as an information indexing and referral source rather than a comprehensive collecting and documentation agency. Thus was born the Local and Minnesota Information Section.

The mission of Local and Minnesota Information is to identify, control, bibliographically, and reference information and media about Central Minnesota, specifically, and Minnesota, in general. Primary concern is with Central Minnesota, an area of eighteen and a half counties stretching from the suburbs of the Twin Cities north to the southern edge of

the pine forests and the "Range," from the Glacial Ridge which divides the continent north and south to the valley of the St. Croix River. It is a natural region of unique geological, agricultural, and historical significance with St. Cloud as its largest and natural center.

Closely related is the function of providing information and access to data about Minnesota as a whole. To accomplish this mission and function a series of new reference tools are being developed:

Central Minnesota Index: a record of sources of information, including collections of data, names of people and organizations, which provides access to current and historical data.

Minnesota Information Guides, a series of referencing indexes to local and Minnesota bibliographies, directories, statistical sources, and current studies on major topics of contemporary interest.

Local and Minnesota Information File, a series of folders containing articles, pamphlets, and clippings as well as bibliographic references to materials on current topics, events, and community developments in Central Minnesota and throughout the state.

Minnesota Telephone Directories, a complete collection of all telephone directories issued for the state along with a locally prepared index by name of town indicating in which directory are to be found telephone numbers for a particular community.

Minnesota Business Report File, a collection of annual and other reports for all businesses headquartered or incorporated in Minnesota. This file is part of a collection of over 500 nationwide businesses being assembled for use of clientele of the University.

In addition, Local and Minnesota Information supervises the acquisition of 60 weekly newspapers and 10 daily newspapers from throughout Minnesota.

Other tools are created as the needs arise. Ultimately, it is envisioned that the sources identified and indexes will be translated into machine readable format and incorporated into a computer database.



MARIE ELSEN PRESENTS PAPER

Marie Elsen, University Archivist, presented a paper entitled "Using SPINDEX in a University Archives" at the annual meeting of the National Association of State Archivists and Records Administrators. SPINDEX, a national archives computer program, was made available to St. Cloud State University Archives under a grant from the National Historical Publications and Records Commission. Use of the program greatly improves user access to archival and manuscript information by making multiple access points at the folder level economically feasible. In addition to its use in the processing of records and manuscript collections, the UNIVERSITY CHRONICLE is being indexed.

AECT NATIONAL CONVENTION  
DALLAS, TEXAS

Over 6,000 delegates and exhibitors will participate in the 1982 Association for Educational Communications and Technology (AECT) Convention, to be held at the Dallas Convention Center, May 3-7th.

"Expanding Career Perspectives: Concepts and Roles in Transition" is the theme of the 1982 Convention. Some of the target areas to be covered within that framework include: Business and Industry, Medical and Health Sciences, Education, Interactive Delivery Systems, Information Sciences, International Outlook, and Government.

The exhibits at the AECT Convention will be open on May 4, 5, and 6th. The latest instructional materials, equipment, and services; from simple to sophisticated, will be displayed and demonstrated at more than 400 exhibit booths.

A number of pre-convention workshops will also be offered to focus on developing skills, improving competence, and exploring problems common to the profession. 1982 workshops include such topics as Microcomputer in Education, Cable Television, Instructional Development, and the Selection of Media.

Attendance at the AECT Convention is open to anyone interested in the use of media and technology in education and training. Attendees may pre-register for the convention at a reduced rate up until April 16th. On-site registration will take place at the Dallas Convention Center on Monday, May 3rd.

To request more information and pre-registration materials, or to learn more about AECT membership, write to the AECT Convention Office, 1126 Sixteenth Street NW, Washington, D.C. 20036.

SCSU ALUMNUS TO HEAD-UP NARMC

Mary Kerns graduate of the Information Media program has been elected to the position of President-elect of NARMC, the National Association of Regional Media Centers.

Regional Media Centers are established to provide instructional resources and services that are not technically feasible or financially justifiable at the individual system's level of support. The National Association of Regional Media Centers has as its primary goal the support of the RMC objectives by providing an agency association with a program of activities. There are ten NARMC regions set up across the United States.

Anyone interested in further information should contact Mary Kerns at 800 E. 2nd Street, McMinnville, OR 97128.

FORMER GRADUATE REELECTED  
MEMO SECRETARY

6

BERTRAM WINS COVER CONTEST

Michael D. (Mick) Briscoe, K-9 Media Director in the Morris-Donnelly Public School System, will soon be completing another year as Secretary of the Minnesota Educational Media Organization.

Briscoe has been active in MEMO serving on the Awards and Professional Development Committee, participating in the M. I. Smith Leadership Conference, and serving as a mini-session presenter at Mid-winter Combined Conference. He has been MEMO Region Three Vice-President and is presently President-Elect of that district. He served as Secretary of MEMO for one term before being re-elected last spring.

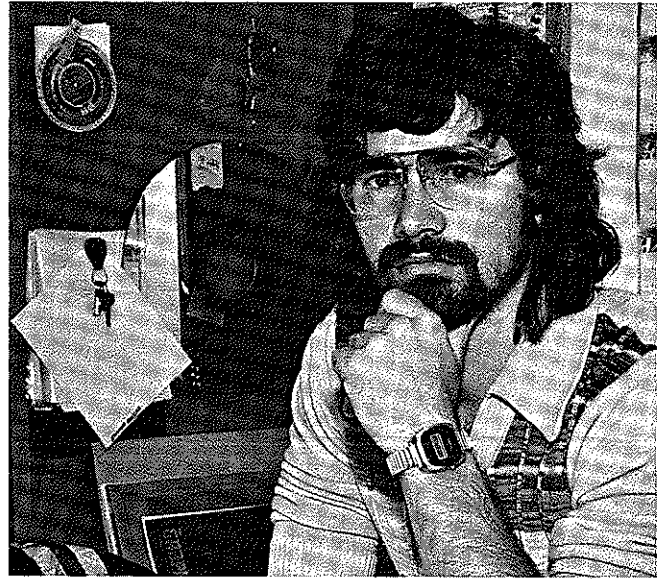
Congratulations to Mick Briscoe for his re-election as Secretary of MEMO.

JOINT MEETING--CMLE, MEMO, AND MLA

On November 4th, librarians representing many types and sizes of libraries in the twelve county central Minnesota area gathered together at the Holiday Inn, St. Cloud. The event was the joint effort of the Central Minnesota Libraries Exchange, MEMO Region 6, and MLA. The Exchange's governing board held an open meeting in the afternoon. Following that, the Minnesota Library Association held a meeting to hear from both MLA members and nonmembers about what it should, as a professional organization, be doing for its members. At 5:00 p.m. a brief presentation and discussion of the Exchange's long-range plan was held, and a school representative elected to the CMLE advisory committee. Wine and cheese provided by commercial exhibitors followed the afternoon program. Area librarians were able to visit informally before the evening dinner and program. Mike Knievel, director of the Cloquet Public Library, President of the Minnesota Library Media Network, and Secretary of Northern Lights Library Cooperative, discussed his experiences with and applications of videodisc technology. The meeting fostered a congenial atmosphere for discussion of common goals and concerns and an appreciation of our diverse interests.

The Central Minnesota Libraries Exchange is one of seven multi-county/multi-type library cooperatives funded by the state. Its office is located at St. Cloud State University's Learning Resources Services.

Jim Bertram, graphic artist with the Instructional Development Division of Learning Resources, designed the winning entry in the cover contest sponsored by Minnesota Media, the professional journal of the Minnesota Educational Media Organization (MEMO). Jim's entry will be the cover design to be used on all future issues of the journal.



JIM BERTRAM

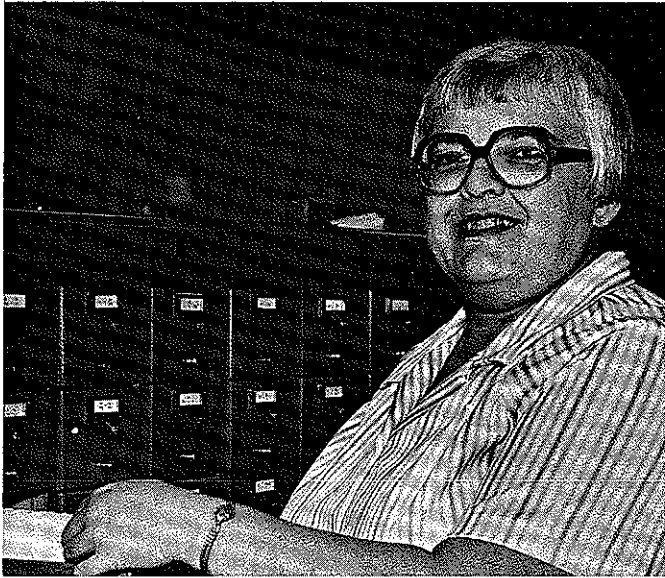
MEET A NEW MEMBER OF OUR CLERICAL STAFF

New to Learning Resources Services but certainly not new to the campus is Inez Kronenberg. Inez transferred to Technical Services in Learning Resources last summer after having been in the Academic Affairs Office for 26 years. At Learning Resources she spends much of the day working with the OCLC system inputting information to the Online Catalog and helping to maintain the shelf list. She also helps out some of the other areas of the building by handling the money from the copying and coin change machines.

Inez is well known in the St. Cloud area as a genealogist. She is a charter member and on the Board of Directors of the St. Cloud Area Genealogists. She also does the organization's newsletter.

Photography and travel are other hobbies Inez pursues actively. She has traveled to all of the fifty states and the territories and provinces of Canada. In addition, she has traveled to Morocco, Africa and to

Europe on three separate occasions. Her last trip to Europe was closely tied to her interest in genealogy. She spent much of the time visiting people with whom she had been corresponding concerning genealogy. Inez does slide presentations for groups on both genealogy and on her travels. Inez's most recent accomplishment was her prize winning photography of snow-covered bicycles in the Amateur Photography Contest of the St. Cloud Community Arts Council.



INEZ KRONENBERG

#### FACULTY AND STAFF NOTES

Anthony Schulzetenberg took over the role of division leader for the Center for Library and Audiovisual Education last fall replacing Jim May who resigned to accept a position in training and development at the Donn Corporation in West Lake, Ohio.

Roger Sween and Doreen Keable resumed their duties after one year leaves. Phyllis Lacroix has spent this entire year working on her doctorate at the University of Minnesota. She plans to be back in September, 1982.

Doreen Keable, John Berling, Dennis Fields, and Carl Savage attended the Ruth Ersted Workshop sponsored by the Minnesota Educational Media Organization (MEMO) at Madden's Resort near Brainerd, Minnesota last fall. Rich Josephson and Mike Nelson were on the program presenting information on interactive video.

Bonnie Hedin and Beth Quanbeck attended the Florida Instructional Computing Conference at Orlando, Florida February 1-3, 1982.

Michael Cassidy resigned in January of '82 to accept a position in training and development with the Bell Systems Laboratories in Holmdel, New Jersey.

John Berling, David Rydberg, and Marie Elsen recently were elected to serve on a 16 member committee representing faculty and administration at St. Cloud State University which is in the process of screening applicants for the presidency of St. Cloud State University. The new president will assume duties in the fall of 1982. "Ted" Lowell Gillett has been the acting president this past year since the resignation of Charles Graham.

Dick Busse attended a Data Users Workshop in Kansas City, Missouri for one week in October. The workshop dealt with the use of all the census publications of the United States Government.

Dennis Fields spoke to the Sioux Falls Library Media Staff in January and later that day conducted an inservice workshop for library media people and teachers in the Sioux Falls area. In February, Dennis was on a North Central Evaluation Team for Totino-Grace High School in Fridley.

Harlan Jensen and Don Olson from State Procurement were presenters at the Region 1, 3, 4, 5, and 6 meeting at Arrowwod Lodge at Alexandria, MN on February 24, 1982. George Erickson, Doreen Keable, John Berling, Tony Schulzetenberg, and Lucy Supan also attended.

John Berling recently presided as Deputy Chair at the ACRL meeting in Minneapolis. Virginia Blaske and David Rydberg also participated in the meeting by giving on-line catalog demonstrations to the participants.

Michaela (Mac) Meyer recently left Learning Resources to take the position of Reservations Secretary in Atwood Center. Mac formerly served in Public Services under Marie Elsen.

#### TEN GRADUATE ASSISTANTSHIPS AWARDED

Graduate assistants have been sharing their expertise with us in all four divisions of Learning Resources and the Center for Library and Audiovisual Education. The Instructional Development Division (formerly



Production Services) has had the assistance of four of our graduate students--Jose Rodriquez, Francis (Mordi) Okia, Mike DeLuca, Bobbie Leitzke, and Judy Kunert. Public Services has been served by Sheila Speltz and Paul McCann. Technical Services is the area of assignment for Doris Matter and Carolyn Tobiassen. Bruce Boehne is assisting in the Center for Library and Audiovisual Education.



Top left to right: JOSE RODRIQUEZ, BRUCE BOEHNE, DORIS MATTER, MIKE DELUCA. Bottom left to right: CAROLYN TOBIASSEN, BOBBIE LEITZKE, SHEILA SPELTZ, MORDI OKIA, JUDY KUNERT.

#### DICK BUSSE AND FAMILY TOUR WESTERN CANADA AND ALASKA

Dick Busse, Government Documents Librarian and Reference staff member, and his family spent seven weeks touring Western Canada and Alaska. They traveled by motorhome to Prince Rupert, British Columbia where they boarded the Alaska Marine Highway system to Sitka where he and his wife had both taught years ago. From there they spent time at Juneau, Glacier Bay National Monument and back on land at Skagway. There they loaded their motorhome on a train and took the route of the Klondike Gold Rush prospectors to Whitehorse in the Yukon Territory. From Whitehorse they drove the Alaska Highway to Alaska where they visited Anchorage, Kenia, Seward, Homer and Fairbanks. One of the most exciting aspects of the trip was a two day drive up the Haul Road, which was used during construction of the Alaska Pipeline,

to just north of the Artic Circle. The return trip was via the Alaska Highway and then through Northern British Columbia, Alberta, Saskatchewan and Manitoba. During the trip, Dick stopped and visited college, university, and several special libraries in the larger cities which provided him with an opportunity to see how government documents and reference policies and procedures are conducted in various libraries.

#### GRADUATE GRAPEVINE

Janet Nash has accepted a position in training and development with the Gambles-Skogmo, Inc. Company in Minneapolis.

Tom Allen is the new Media Services Coordinator at the St. Cloud Hospital.

Sharon Evensen has accepted a position as the elementary media center specialist at the Kasson-Mantorville Public Schools.

Alyce Tomita Tomporowski took Tom Peterson's position at the New York Mills Senior High School Media Center. Tom is now at the Staples Senior High School, Staples, Minnesota.

Bill Bruns is the Assistant General Manager of KVSC at St. Cloud State University and is also a part-time instructor in the Mass Communications Department on campus.

Marien Haley has left TIES to join the Weldon Electronics Company in the Twin Cities Metropolitan area. She will be conducting seminars and doing consulting work in the field of microcomputers. She will also be handling some of the sales in both the software and hardware area of the microcomputers.

Walt Dunlap is still with the Arrowhead Library System in Virginia, Minnesota. He is currently serving as secretary-treasurer of the Minnesota Library Film Circuit. He is also the at-large member of the Minnesota Library Association's PLD Board.

Joachim Pusch who is at North Hennepin Community College spent some time traveling in Europe. While there he had the opportunity to meet with hometown people from his former Province of Silesia. If you would like to hear more about his travel experiences, you may contact the North Hennepin Community College Speaker's Bureau. He also sends word that last year he caught a 20 pound catfish on a walleye hook and that he caught six sturgeons in 2½ hours from the St. Croix.

Anne LaRose has left Innovative Marketing to take a position at Campbell-Mithun. Her

replacement at Innovative Marketing is Jane Elstad. Jane has also recently taken the position as Administrative Aide for MEMO.

Tom Miller will become the manager of the new Godfather's Pizza in Eveleth May 1st. Congratulations to Tom and Margie Ericksen who were married October 16th. Congratulations go also to Pat(Borgert) Bowers and Ed Gambill who were married on January 1st.

Judy Vener recently accepted a position at First Bank System, Inc. in Minneapolis as Human Resources Officer-Training.

## GRADUATES

Since summer 1980, 16 people have graduated with the masters degree and two with the specialist degree. Obtaining the masters degree were: Rita Dreissig, John Frank, Martha Gorsky, Janet Stone, Martha Castellanos, Thomas Wicklund, Sharon Evensen, Kris Gardinier, Thomas Holvik, Kathy Hultberg, Alen Tabbut, Kay Tomsich, Gerry Wing, and Jay Lenz. The two recipients of the specialists degree were Milt Kinzler of North Dakota and Jan Sorell. Two people have successfully completed the Track III (training and development/human resources) program of the masters degree. They are Francis (Mordi) Okia and Janet Nash.

## SUMMER SCHEDULE

### LIBRARY & AUDIOVISUAL EDUCATION (IM)/FIRST TERM

CRF	DEPT	CRSE	SECT	COURSE TITLE	HRS	INSTRUCTOR #1
3624	IM	410	01	PHOTO TOUR OF N MN	2	NELSON M
BY PERMISSION ONLY						
GRADING OPTIONS SU-REQ						
BEGIN/END DATE 07/12-07/26						
HOURS ARRANGED						
3625	IM	410	02	TOUR MUNICH TO ROME	3	SCHULZETENBERG A
BY PERMISSION ONLY						
GRADING OPTIONS SU-REQ						
BEGIN/END DATE 06/28-07/13						
HOURS ARRANGED						
3555	IM	412	01	TV IN MEDIA	4	POLESAK FRED
TR 1800-2130 CH 134						
3617	IM	444	01	INTERNSHIP	VR	STAFF
BY PERMISSION ONLY						
HOURS ARRANGED						
3605	IM	445	01	MICROS IN SCHOOLS	4	SMELSER LAWRENCE
MTWRF 0730-0900 CH 126						
3556	IM	468	01	MEDIA MATERIALS	3	KEABLE DOREEN
MTWRF 0730-0840 CH 125						
3557	IM	468	02	MEDIA MATERIALS	3	STAFF
MTWRF 0915-1025 CH 125						
3565	IM	473	01	PHOTOGRAPHY	4	KOYAMA STEVE
MTWRF 1245-1415 CH 125						
3568	IM	477	01	REFERENCE AND BIBLIO	4	SWEEN ROGER
MTWRF 0915-1045 CH 134						
3569	IM	478	01	TECH-PROC I	4	ELSEN MARIE
MTWRF 0915-1045 CH 126						
3562	IM	495	01	ANIMATED FILM PRO WK 2	2	NELSON MIKE
GRADING OPTIONS SU-REQ						
BEGIN/END DATE 06/28-07/02						
MTWRF 0900-1600 CH 130						
3614	IM	495	03	DESIGN LEARN CENTERS	1	KEABLE DOREEN
GRADING OPTIONS SU-REQ						
BEGIN/END DATE 06/23-06/24						
WR 0900-1600 CH 130						

CRF	DEPT	CRSE	SECT	COURSE TITLE	HRS	INSTRUCTOR #1
3560	IM	495	04	TV VIEWING GUIDANCE	1	WESTBY G
GRADING OPTIONS SU-REQ						
BEGIN/END DATE 07/08-07/09						
RF 0900-1600 CH 130						
3633	IM	495	05	ED FILM ACT+IDEAS	1	KOYAMA STEVE
GRADING OPTIONS SU-REQ						
BEGIN/END DATE 06/14-06/15						
MT 0900-1600 CH 130						
3635	IM	495	06	STORYTELLING	1	KEABLE DOREEN
GRADING OPTIONS SU-REQ						
BEGIN/END DATE 06/21-06/22						
MT 0900-1600 CH 130						
3637	IM	495	07	SOUND REINFORCE SYS	1	JOSEPHSON RICHARD
GRADING OPTIONS SU-REQ						
BEGIN/END DATE 07/12-07/15						
MTWRF 0900-1200 CH 130						
3646	IM	495	10	LIB MGT WKSHP	1	SCHULZETENBERG A
BY PERMISSION ONLY						
GRADING OPTIONS SU-REQ						
BEGIN/END DATE 06/16-06/18						
WR 0830-1630 CH 130						
F 0830-1130 CH 130						
3612	IM	510	01	PHOTO TOUR OF N MN	2	NELSON M
BY PERMISSION ONLY						
GRADING OPTIONS SU-REQ						
BEGIN/END DATE 07/12-07/26						
HOURS ARRANGED						
3626	IM	510	02	TOUR MUNICH TO ROME	3	SCHULZETENBERG A
BY PERMISSION ONLY						
GRADING OPTIONS SU-REQ						
BEGIN/END DATE 06/28-07/13						
HOURS ARRANGED						
3627	IM	510	03	TOUR MUNICH TO ROME	6	SCHULZETENBERG A
BY PERMISSION ONLY						
GRADING OPTIONS SU-REQ						
BEGIN/END DATE 06/28-07/13						
HOURS ARRANGED						
3618	IM	512	01	TV IN MEDIA	3	POLESAK FRED
TR 1800-2130 CH 134						
3606	IM	545	01	MICROS IN SCHOOLS	3	SMELSER LAWRENCE
GRADING OPTIONS SU-REQ						
MTWRF 0730-0900 CH 126						
3575	IM	573	01	PHOTOGRAPHY	3	KOYAMA STEVE
MTWRF 1245-1415 CH 125						
3578	IM	577	01	REFERENCE AND BIBLIO	3	SWEEN ROGER
MTWRF 0915-1045 CH 134						
3579	IM	578	01	TECH PROC I	3	ELSEN MARIE
MTWRF 0915-1045 CH 126						
3561	IM	595	01	ANIMATED FILM PRO WK 2	2	NELSON MIKE
GRADING OPTIONS SU-REQ						
BEGIN/END DATE 06/28-07/02						
MTWRF 0900-1600 CH 130						
3615	IM	595	03	DESIGN LEARN CENTERS	1	KEABLE DOREEN
GRADING OPTIONS SU-REQ						
BEGIN/END DATE 06/23-06/24						
WR 0900-1600 CH 130						
3613	IM	595	04	TV VIEWING GUIDANCE	1	WESTBY G
GRADING OPTIONS SU-REQ						
BEGIN/END DATE 07/08-07/09						
RF 0900-1600 CH 130						
3634	IM	595	05	ED FILM ACT+IDEAS	1	KOYAMA STEVE
GRADING OPTIONS SU-REQ						
BEGIN/END DATE 06/14-06/15						
MT 0900-1600 CH 130						
3636	IM	595	06	STORYTELLING	1	KEABLE DOREEN
GRADING OPTIONS SU-REQ						
BEGIN/END DATE 06/21-06/22						
MT 0900-1600 CH 130						
3638	IM	595	07	SOUND REINFORCE SYS	1	JOSEPHSON RICHARD
GRADING OPTIONS SU-REQ						
BEGIN/END DATE 07/12-07/15						
MTWRF 0900-1200 CH 130						
3647	IM	595	10	LIB MGT WKSHP	1	SCHULZETENBERG A
BY PERMISSION ONLY						
GRADING OPTIONS SU-REQ						
BEGIN/END DATE 06/16-06/18						
WR 0830-1630 CH 130						
F 0830-1130 CH 130						
3582	IM	603	01	IM THEORY RESCH PRAC	3	CASSIDY MIKE
MTWRF 0730-0840 CH 134						
3564	IM	606	01	ORG AND SUPV	3	SCHULZETENBERG A
MTWRF 1100-1210 CH 134						
3607	IM	607	01	TRAINING/HRD	3	HILL FRED
MW 1800-2030 CH 134						
3595	IM	644	01	STORAGE AND RETRIEVL	3	RYDBERG DAVID
MTWRF 1100-1210 CH 125						
3601	IM	680	01	INTERNSHIP	VR	STAFF
BY PERMISSION ONLY						
HOURS ARRANGED						
3602	IM	681	01	READINGS	VR	STAFF
BY PERMISSION ONLY						
HOURS ARRANGED						
3603	IM	682	01	RESEARCH	VR	STAFF
BY PERMISSION ONLY						
HOURS ARRANGED						
3604	IM	683	01	SEM SPECIALIST DEGR	VR	
BY PERMISSION ONLY						
HOURS ARRANGED						
3639	IM	683	02	SEM MAIN + ACQ	2	JENSEN HARLAN
GRADING OPTIONS SU-REQ						
BEGIN/END DATE 07/12-07/16						
MTWRF 1100-1600 CH 127						
3616	IM	684	01	FIELD STUDY IN MEDIA	VR	STAFF
BY PERMISSION ONLY						
HOURS ARRANGED						

**LIBRARY & AUDIOVISUAL EDUCATION  
(IM)/SECOND TERM**

CPEF	DEPT	CRSE	SECT	COURSE TITLE	HRS	INSTRUCTOR #1			
3563	IM	444	D2	INTERNSHIP	VR	STAFF			
BY PERMISSION ONLY HOURS ARRANGED									
3558	IM	468	D3	MEDIA MATERIALS	3	KOYAMA STEVE			
MTWRF	0730-0840	CH	125						
3559	IM	468	D4	MEDIA MATERIALS	3	SIMONS MICHAEL			
MTWRF	0915-1025	CH	125						
3564	IM	471	D1	PREP OF MATERIALS	4	KEABLE D			
MTWRF	0730-0900	CH	134						
3566	IM	475	D1	ADMIN FUNC	4	SCHULZETENBERG A			
MTWRF	0730-0900	CH	126						
3567	IM	476	D1	SELECT MAT	4	CLARKE NORH			
MTWRF	0915-1045	CH	134						
3570	IM	481	D1	READ LIST VIEW GUID	4	BUSSE DICK			
MTWRF	1100-1230	CH	125						
3645	IM	495	D2	INF PHOTO-GEOL STD	4	NELSON MIKE			
GRADING OPTIONS	SU-REQ						BEGIN/END DATE 07/27-08/10		
HOURS ARRANGED									
3640	IM	495	D8	DEV SELECT POLICY	1	WESTBY JERRY			
GRADING OPTIONS	SU-REQ						BEGIN/END DATE 07/19-07/20		
MT	0900-1600	CH	130						
3642	IM	495	D9	MEDIA CENTER EVAL	1	SCHULZETENBERG A			
GRADING OPTIONS	SU-REQ						BEGIN/END DATE 07/21-07/22		
WR	0900-1600	CH	130						
3574	IM	571	D1	PREP OF MATERIALS	3	KEABLE DOREEN			
MTWRF	0730-0900	CH	134						
3576	IM	575	D1	ADMIN FUNC	3	SCHULZETENBERG A			
MTWRF	0730-0900	CH	126						
3577	IM	576	D1	SELECT MAT	3	CLARKE NORH			
MTWRF	0915-1045	CH	134						
3648	IM	595	D2	INF PHOTO-GEOL STD	3	NELSON MIKE			
GRADING OPTIONS	SU-REQ						BEGIN/END DATE 07/27-08/10		
HOURS ARRANGED									
3641	IM	595	D8	DEV SELECT POLICY	1	WESTBY JERRY			
GRADING OPTIONS	SU-REQ						BEGIN/END DATE 07/19-07/20		
MT	0900-1600	CH	130						
3643	IM	595	D9	MEDIA CENTER EVAL	1	SCHULZETENBERG A			
GRADING OPTIONS	SU-REQ						BEGIN/END DATE 07/21-07/22		
WR	0900-1600	CH	130						
3585	IM	608	D1	RESEARCH METHODS	3	HILL FRED			
MTWRF	1245-1355	CH	125						
3594	IM	639	D1	READ LIST VIEW GUID	3	BUSSE DICK			
MTWRF	1100-1230	CH	125						
3608	IM	646	D1	MICRO SOFTWARE	3	STAFF			
MTWRF	1100-1210	CH	126						
3596	IM	647	D1	INSTR DEV FOR MICROS	3	FIELDS DENNIS			
TR	1800-2030	CH	134						
3598	IM	658	D1	SYSTEMS DESIGN	3	FIELDS DENNIS			
MTWRF	1100-1210	CH	134						
3600	IM	662	D1	RECENT TRENDS	3	KEABLE DOREEN			
MTWRF	0915-1025	CH	126						
3628	IM	680	D2	INTERNSHIP	VR	STAFF			
BY PERMISSION ONLY HOURS ARRANGED									
3629	IM	681	D2	READINGS	VR	STAFF			
BY PERMISSION ONLY HOURS ARRANGED									
3630	IM	682	D2	RESEARCH	VR	STAFF			
BY PERMISSION ONLY HOURS ARRANGED									
3631	IM	683	D3	SEM CONT MTL5	3	SCHULZETENBERG A			
GRADING OPTIONS	SU-REQ						BEGIN/END DATE 07/26-08/05		
MTWRF	0800-1200	CH	130						
3632	IM	683	D4	SEM AACR II	2	ELSEN M			
GRADING OPTIONS	SU-REQ						BEGIN/END DATE 08/09-08/12		
MTWR	0900-1530	CH	130						
3610	IM	683	D5	SEM MAIN + ACQ	2	JENSEN HARLAN			
GRADING OPTIONS	SU-REQ						BEGIN/END DATE 08/16-08/20		
MTWRF	1100-1600	CH	127						
3644	IM	683	D6	PHOTO FOR TEACHERS	2	KOYAMA STEVE			
GRADING OPTIONS	SU-REQ						BEGIN/END DATE 08/09-08/12		
MTWR	0900-1530	CH	127						

If any of our readers would like to submit any information for the next newsletter, please send it to:

Editor - Newsletter  
Center for Library and Audiovisual Education  
St. Cloud State University  
St. Cloud, MN 56301

# WORKSHOPS AND SHORT COURSES

Center for Library and Audiovisual Education  
College of Education  
St. Cloud State University

## EDUCATIONAL RESOURCES TOUR: FROM MUNICH TO ROME

An experience in the design and development of resource materials, utilizing a 16-day European study tour to places of social, political, cultural, religious, historical, and educational interest. Course will include pre-session, tour sessions, and a follow-up paper.

IM 510 June 28-July 13, 3/6 credits  
Dennis Fields and Tony Schulzetenberg, Instructors

## PHOTOGRAPHY TOUR OF NORTHERN MINNESOTA

A tour which emphasizes the use of 35mm slide photography in collecting information for instructional use, using scenic and cultural Northern Minnesota as a resource.

IM 410-510 July 12-16, 2 credits  
Mike Nelson, Instructor

## ANIMATED FILM WORKSHOP

An introduction to the planning and production of animated films emphasizing the principles of animated cinema and its instructional applications.

IM 495-595 June 28-July 2, 9-4, 2 credits  
Mike Nelson, Instructor

## DESIGNING LEARNING CENTERS, STATIONS, KITS

A workshop for librarians and media specialists providing tips on techniques in planning, constructing, and utilizing individual learning units for student use.

IM 495-595 June 23-24, 9-4, 1 credit  
Doreen Keable, Instructor

## TV VIEWING GUIDANCE

A workshop for teachers, media specialists, and parents which includes techniques and strategies for positive guidance in children's television viewing.

IM 495-595 July 8-9, 9-4, 1 credit  
Gerald Westby, Instructor

## EDUCATIONAL FILM ACTIVITIES

Demonstration of various creative uses of short films, previewing and understanding a number of compelling visuals, and hands-on activity of non-technical interests.

IM 495-595 June 14-15, 9-4, 1 credit  
Steven Koyama, Instructor

## STORYTELLING FOR TEACHERS AND MEDIA SPECIALISTS

An activity oriented experience in the advantages of using storytelling as a resource and stimulus.

IM 495-595 June 21-22, 9-4, 1 credit  
Doreen Keable, Instructor

### \*LIBRARY MANAGEMENT WORKSHOP

A seminar type management workshop for administrative personnel in dealing with all aspects of the library/media field.

IM 495-595 June 16, 12:00 through June 18, 12:00  
Offered at North Hennepin Community College, Building G, Rooms 179-180  
Workshop fee is \$50.00 (one credit available at additional charge)  
Charles Kauffman, U of South Dakota, Instructor  
Tony Schulzetenberg, Coordinator

### SOUND REINFORCEMENT SYSTEMS

A workshop to explore basic, beginning knowledge to select, install, test, and evaluate sound reinforcement systems.

IM 495-595 July 12-15, 9-12, 1 credit  
Rich Josephson, Instructor

### SEMINAR: ACQUISITION AND MAINTENANCE OF EQUIPMENT

A seminar providing practical information on acquisition of audiovisual equipment and simple maintenance problems.

IM 683 July 12-16 (first session) 11-5, 2 credits  
August 16-20 (second session) 11-5, 2 credits  
Enrollment limited--preregistration advised  
Harlan Jensen, Instructor

### DEVELOPING A SELECTION POLICY FOR MEDIA CENTERS

A workshop designed to provide guidance and direction to the practitioner in the development and implementation of selection policies for media centers.

IM 495-595 July 19-20, 9-4, 1 credit  
Gerald Westby, Instructor

### MEDIA CENTER EVALUATION

A workshop to examine evaluation processes for school media centers, with an emphasis on practical applications of theoretical approaches.

IM 495-595 July 21-22, 9-4, 1 credit  
Tony Schulzetenberg, Instructor

### SEMINAR: PHOTOGRAPHY FOR TEACHERS

A non-technical seminar on utilization of photography in the classroom.

IM 495-595 August 9-12, 9-3:30, 2 credits  
Steven Koyama, Instructor

\*Please note this change from the summer bulletin. Also note: IM 683 Seminar: AACR II to be offered second session has been cancelled.

# IM 410/510 PHOTO TOUR, July 12-16, 1982

The Center for Library and Audiovisual Education, St. Cloud State University, invites you to participate in a regional photographic tour designed to improve the quality and the effectiveness of your color slide photography. Tour is open to all interested adults and should be of particular interest to teachers, media professionals, and slide photographers. Activities include visits to several informative and photogenic sites, pre-visit and on-site demonstrations, and post-visit discussions of resulting slides. These activities, interaction with other participants, and the nature of the sites visited should provide ample opportunity for teachers to develop exemplary visuals for classroom use, for media professionals to improve photographic and visual competencies, and for the beginning or advanced photographer to improve technical and compositional skills.

**ITINERARY AND HIGHLIGHTS (tentative).** *Monday, July 12.* Demonstrations, discussions, local on-site photography, critique of slides. *Tuesday, July 13.* Bus tour of local sites, demonstrations, discussions, critique of slides. *Wednesday, July 14 thru Friday, July 16.* Three days on the road visiting sites such as Duluth port, Railroad museum, Gooseberry Falls, Iron Range Interpretative Center, Mississippi Headwaters, and other scenic locations.

**REQUIREMENTS.** All participants must provide their own 35mm camera. A light meter is also necessary and may be either a separate unit or a component of your camera. Participants should also bring a tripod and any other accessories (e.g., lenses, filters, or other personal items) normally used.

**FILM AND PROCESSING.** To facilitate feedback and critique of slides, each participant will be furnished Kodak Ektachrome 200 slide film and a tentative shooting schedule so that minimum delay will intercede shooting and viewing of resulting slides. Since most participants will probably wish to purchase additional film, cooperative discount purchasing will be discussed. Persons who are accustomed to slide film other than Ektachrome 200 will be asked to defer to Ektachrome 200 for the three rolls furnished for the tour, thus enabling uniformity in materials for our initial sessions.

**COSTS.** The following are itemized for your information and convenience. Note that tuition is not only listed as a separate item, but **requires a separate check.** Lodging refers to dormitory housing, two persons per room with linens and towels provided. Tour fees include only those items identified and *do not* include meals, photographic equipment, materials, literature, or supplies not specifically itemized. SCSU also reserves the right to adjust tour sites and activities as necessary because of weather or other unforeseen events.

**Lodging at St. Cloud (Optional).** Dormitory rooms are available at St. Cloud State at \$7 per night. Tour activities include both early morning and late afternoon sessions in St. Cloud for Monday and Tuesday, and the bus tour will begin early Wednesday morning; please consider these factors as well as your commuting distance when selecting lodging. Persons staying at SCSU dorms may leave personal items in storage during bus tour at no extra cost.

**Bus Tour (Required).** Includes bus fare, lodging for Wednesday and Thursday evenings, and three rolls of color slide film with processing. Cost \$120.

**Tuition (Optional. Separate check required.)** IM 410/510 Photo Tour, 2 credits, S/U grading. Resident: IM 410, \$30.70; IM 510, \$39.30. Non-resident: IM 410, \$61.10; IM 510, \$79.00. Although registration for credit is optional, a minimum of 17 registrants will be required.

**PAYMENT DEADLINES AND REFUNDS.** Tour deposit of \$50, submitted via check payable to SCSU, due June 15, 1982. Balance due July 12, 1982. All fees will be refunded if tour is cancelled by SCSU or if refund is requested in writing and received before June 15, 1982. If you cancel after June 15, 1982, you may be charged up to \$50 to cover prearranged transportation commitments. All unused money will be returned to tour participants on an equal basis.

**CONTACT PERSON.** Address all correspondence and inquiries to J.M. Nelson, Center for Library and Audiovisual Education, St. Cloud State University, St. Cloud, MN, 56301. Phone: (612)255-2068.

Make checks payable to St. Cloud State University. Return payment and form to

J.M. Nelson,  
CLAVE CH 30  
St. Cloud State University  
St. Cloud, MN 56301.

Name \_\_\_\_\_  
Address \_\_\_\_\_  
Phone \_\_\_\_\_

Check or deposit for:

Bus tour .....	\$120.00
Sunday room .....	\$7.00
Monday room .....	\$7.00
Tuesday room .....	\$7.00
Friday room .....	\$7.00
Total .....	

**TUITION (Optional. Separate check required.)**

RESIDENT	\$30.70	NONRESIDENT	
<input type="checkbox"/> IM410	\$39.30	<input type="checkbox"/> IM410	\$61.10
<input type="checkbox"/> IM510		<input type="checkbox"/> IM510	\$79.00

Check enclosed (minimum deposit: \$50)

Balance due June 15, 1982

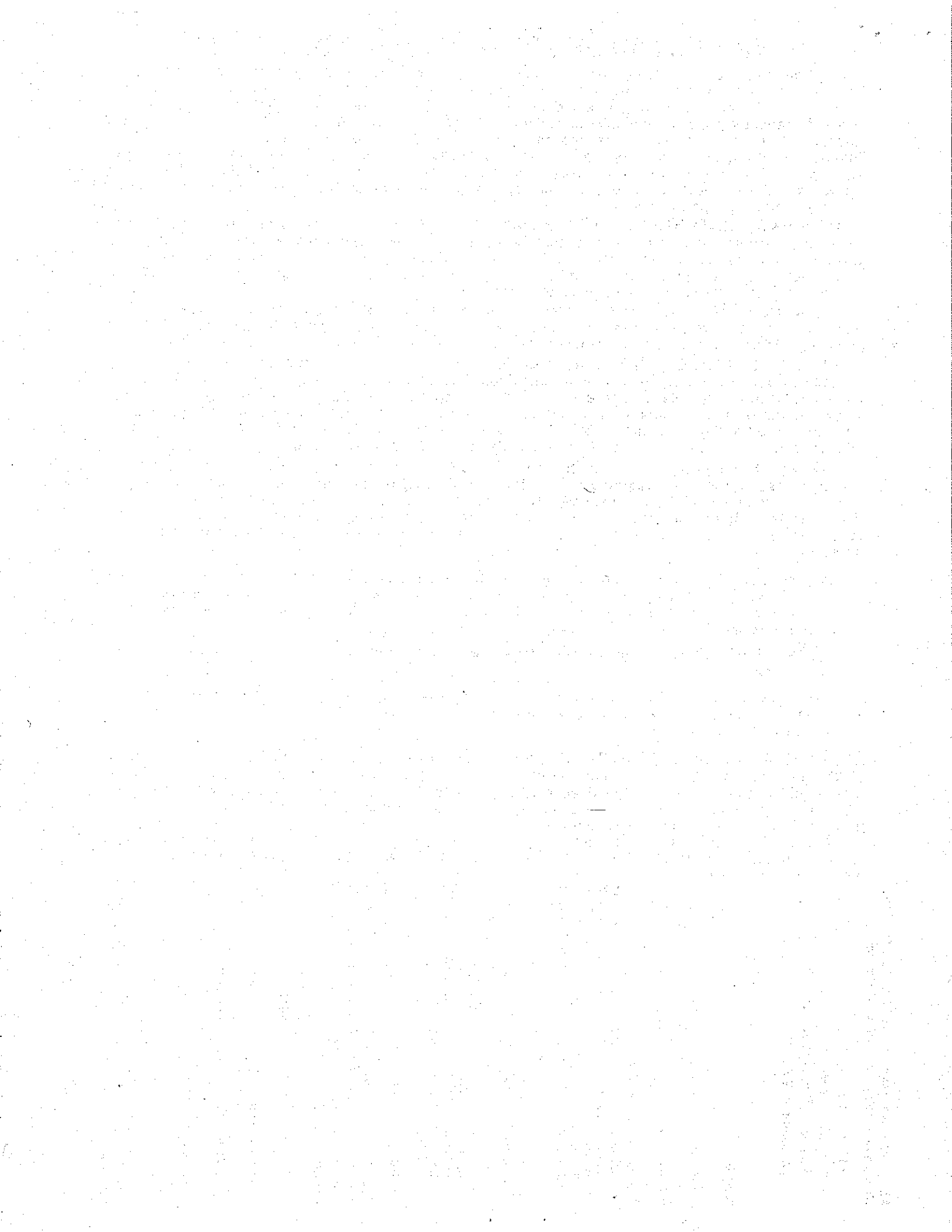
The following information will help us in making room assignments and in selecting supplementary material for reading or discussion.

Sex: M F Smoker Nonsmoker  
Roommate preference \_\_\_\_\_

I intend to bring the following items:

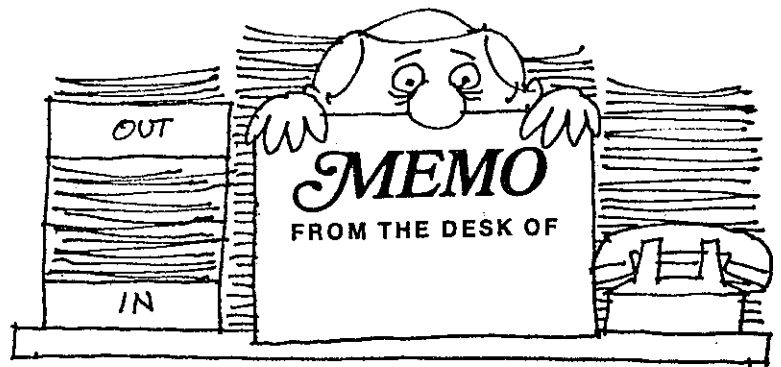
Make and model of camera \_\_\_\_\_  
Lenses and accessories \_\_\_\_\_

I am specifically interested in the following topics: (use back if needed)



# LIBRARY MANAGEMENT WORKSHOP

June 16 - 18, 1982



CENTER FOR LIBRARY AND AUDIOVISUAL EDUCATION AND CONTINUING STUDIES  
SAINT CLOUD STATE UNIVERSITY

TITLE: THE PERSONNEL FUNCTION IN THE LIBRARY: A DIAGNOSTIC APPROACH

INSTRUCTOR: Dr. Charles N. Kaufman, Dean, Graduate School, University of South Dakota  
Dr. Kaufman is also a Professor of Management in the School of Business at the University of South Dakota. He holds a doctorate in Business Administration from Indiana University in Management. Workshops on library management have been conducted at the Mountain-Plains Library Association's annual meetings, in state library meetings in Oklahoma, Texas, and Arizona. On campus workshops have also been conducted at the University of South Dakota and at other colleges and universities.

SITE OF WORKSHOP: North Hennepin Community College  
Room 179-180, Building G  
Brooklyn Center, MN

DATES: June 16-June 18, 1982

#### TIME SCHEDULE:

- 11:00-12:00, June 16 -- Registration
- 12:00--4:30, June 16 -- Opening Sessions
- 8:30--4:30, June 17 -- Sessions
- 8:30-12:00, June 18 -- Closing Sessions

#### WORKSHOP TOPICS:

- 1) Managing recurring personal problems
- 2) Managing problem employee behavior
- 3) Managing time for improved productivity
- 4) Effectiveness as a leader
- 5) Leadership style
- 6) Managing time
- 7) Promotion, demotions, transfers, de-hiring, and discipline

REGISTRATION: Preregistration required by June 4, 1982

To register, detach form below, enclosed check for \$50.00 made payable to Saint Cloud State University, and mail to OFFICE FOR CONTINUING STUDIES, DOROTHY SIMPSON, SAINT CLOUD STATE UNIVERSITY, ST. CLOUD, MN 56301.

Participants may also register for one graduate credit at an additional cost of \$33.20 on the first day of the workshop.

For additional information, contact Dorothy Simpson, Office for Continuing Studies, Saint Cloud State, (Phone: 612--255-3081); or Tony Schulzetenberg, Center for Library and Audiovisual Education, Saint Cloud State, (Phone: 612--255-2062).

#### REGISTRATION FORM

\_\_\_\_\_ My check for \$50.00 is enclosed. Please enroll me for the workshop.

\_\_\_\_\_ I am interested in enrolling for one graduate credit at an additional cost of \$33.20. I will register the first day of the workshop.

NAME \_\_\_\_\_ PHONE \_\_\_\_\_

HOME ADDRESS \_\_\_\_\_

WORK ADDRESS \_\_\_\_\_  
(street) (city) (state) (zip)



210117  
Center for Library and Audiovisual Education  
St. Cloud State University  
St. Cloud, MN 56301

