

St. Cloud State University

The Repository at St. Cloud State

Chronicle

Student Publications

4-1-1988

The Chronicle [April 1, 1988]

St. Cloud State University

Follow this and additional works at: <https://repository.stcloudstate.edu/chron>

Recommended Citation

St. Cloud State University, "The Chronicle [April 1, 1988]" (1988). *Chronicle*. 2670.
<https://repository.stcloudstate.edu/chron/2670>

This Book is brought to you for free and open access by the Student Publications at The Repository at St. Cloud State. It has been accepted for inclusion in Chronicle by an authorized administrator of The Repository at St. Cloud State. For more information, please contact tdsteman@stcloudstate.edu.

Perpich stops at SCS to push bonding bill

by Bob McClintick
News Editor

University has \$8 million at stake in bill

Governor Rudy Perpich paid a visit to SCS Tuesday to stump for a proposed \$442 million bonding bill and drum up support for the Greater Minnesota Corp.

Perpich and the Legislature are currently locked in disagreement over portions of the pro-

posed bonding bill that would create funds to establish and maintain state buildings. The bonding bill would help SCS deal with increased enrollment by creating funds to aid in the planning and future construction of a new library, the conversion of Centennial Hall to classrooms

and in the purchasing of land in a six-block area west of campus.

Perpich is on the road pushing for the bonding bill because House and Senate leaders are unwilling to give total support for capital improvement projects at post-secondary institutions.

While the House is willing to support a \$200 million bonding bill, Senate leaders refuse to support the proposal.

The state Legislature approved a \$470 million bonding bill in 1987, \$20 million of which went to SCS for capital im-

provements. Perpich's request for another bonding bill in 1988 would be unprecedented if approved.

State Auditor Arne Carlson, an Independent Republican, has stated that it would be irresponsible for the state to take on anymore debt, but Perpich said

See Perpich/Page 10



Heidi Ehalt/Staff Photographer

With a banjo on his knee

Spring time temperatures had Mark Bruns doing a little strummin' and hummin' near the St. Cloud Public Library Wednesday morning.

McDonald approves 20 cent hike in activity fees

by Bob McClintick
News Editor

The SCS Fee Task Force proposal to increase student activity fees has been approved by SCS President Brendan McDonald.

The increase, which will go into effect July 1, will raise the student activity fee from its current rate of \$4.60 a credit hour to \$4.80 a credit hour, raising the ceiling payable in student activity fees to \$76.80 a quarter.

McDonald considered the divided 13-10 decision of the

SCS Student Senate to reject the proposal, but he approved the increase based on the recommendations of the task force, he said.

There were several reasons outlined in the task force proposal that led to the approval of the increase, McDonald said.

Reasons cited for approving the increase include:

□ Increasing fixed costs to operate the student union, Health Services and service units

See Fees/Page 12



Lost art turns up after 21 years.
Details on Page 8.

Seven percent increase in on-campus housing approved for next year

by Tim Hennagiri
Asst. Managing Editor

A 7 percent increase in state university board rates was approved by the Minnesota State University Board (MSUB) Tuesday to finance major remodeling and other improvement projects.

The new rates mean students who live in residence halls during the 1988-89 academic year will pay an extra \$135 in room and board fees.

Double-occupancy room rates will be increased to \$2,030, said Sharon Miller, MSUB public relations director.

The increase is necessary to bring residence halls and food service facilities up to date, Miller said.

"Rehabilitation is probably a better word than remodeling for

what we (MSUB) will be doing with the increase in funding," Miller said. "Many of the buildings and facilities at schools in the state university system are at least 20 years old and in need of repair."

Removal of asbestos and PCBs and the installation of new fire sprinkler systems in dormitories are the primary projects to be financed by the increased room and board fees.

The MSUB's decision to increase the fees is part of a rate-stabilization plan to ease the impact of increased student educational costs, Miller said.

"We don't want rates to go up for the sake of it," she said. "But the state university board tries to look down the road—say over a four-year period—and determine

See Halls/Page 12

Juvenile denies first-degree murder charge

by Karl Puckett
Managing Editor

ELK RIVER—Andrew Thielen denied allegations in his first appearance in juvenile court Wednesday that he was involved with the slaying of a 30-year-old man just south of the University Bridge last week.

Thielen, 17, Eden Valley, was charged last Friday in Sherburne County District Court with first-degree murder in connection with the slaying of Donald Wayne Gall.

Tenth District Judge Gary

Meyer set a reference hearing for May 23, where it will be decided if Thielen should be tried as an adult or juvenile. He was charged under a juvenile delinquency petition.

Witnesses, psychologists and evidence will be presented at the hearing in May to help the court determine if the nature of the crime and the public's safety warrant Thielen be tried as an adult, said John E. MacGibbon, Sherburne County attorney.

Defense Attorney Richard

See Murder/Page 10

Three SFC members asked to resign/Page 3

New golf coach drives young team/Page 6

Stewart construction on schedule/Page 12

News Currents

State schools are drawing crowd

Enrollment throughout the seven Minnesota State University System (MSUS) schools is expected to increase again this year. The MSUS is comprised of St. Cloud, Bemidji, Marquette, Metropolitan, Moorhead, Southwest and Winona state universities. Applications for admission at the end of February 1987 compared to applications at the end of February 1988 have increased more than 20 percent, according to Robert Carothers, chancellor of the MSUS. The largest jump in enrollment is expected at Southwest State University with 53.8 percent. The lowest projection is for SCS with 9.9 percent.

Professor is first to serve on board

An SCS accounting professor has been elected to the board of directors of the Minnesota Society of Certified Public Accountants. Brad Schwieger, SCS professor of accounting, is the first SCS professor to be elected to the society. Schwieger was elected to the board of directors in March and will begin his term April 1. The position will include serving as a liaison between the board of directors and its committees, establishing budgets and approving reports, overall policies and new membership applications for the society located in Bloomington, Minn., he said. Schwieger has been active in the state society as a committee chairman and as a member of several committees. "I feel honored, of course," he said. "It's a good opportunity, and it will help make the university's name more visible."

Schools unite to benefit students

A cooperative agreement will enable students at technical institutes to earn associate degrees in applied sciences. Students at nine Minnesota technical schools may now earn degrees at six of the seven state universities, said Chancellor Robert Carothers of the Minnesota State University System. The agreement was signed with Joe Graba, state executive director of the Vocational Technical Education System. The agreement was signed in response to the Minnesota Legislature's concern that Minnesota's post-secondary institutions avoid unnecessary duplication of general education programming. State universities, with the exception of Metropolitan, will offer general education or liberal arts courses in cooperation with the technical program offered by the technical institutes. An applied science degree will be awarded by the technical institute in cooperation with the state universities. The degree is designed to prepare people for specific employment opportunities. "Students will have a liberal arts experience at the same time they are preparing for the world of work," Graba said.

Honor society inducts students

Thirty-three SCS students have been inducted into the campus chapter of Kappa Delta Pi, a national education honor society. Dave Dooley, an SCS student who graduated winter quarter, was surprised but flattered to be nominated to the honor society, he said. "I really didn't have any idea," Dooley said. "I was honored to achieve induction." Nominees must be approved by faculty in the education department before they can be accepted to the honor society. Kappa Delta Pi is a society for individuals with strong leadership skills and outstanding scholastic records in education. Candidates must have a minimum grade point average of 3.0, Dooley said.

Sketch of assault suspect released

The St. Cloud Police Department has released a sketch of the man suspected of the reported sexual assault of an SCS student at about midnight March 19 in Lot H between the Business Building and Stewart Hall. The assailant is described as a white male, about 40 years old, 6 feet tall and muscular with a scruffy salt and pepper beard. Anyone with information about the assault should contact the St. Cloud Police Department at 251-1200. A 24-hour SCS campus escort service is available by dialing 255-HELP.

Nearby theater sits in doorway awaiting corporation's decision

by Ron Heck
Staff Writer

A St. Cloud movie theater corporation has said out with the outdoor and in with the indoor, but a nearby theater may be stuck in the doorway as a result.

Cinema Entertainment Corp., Minnesota Highway 15 S., will begin construction today on what will be the city's largest theater complex.

As a result, SCS students may be hoofing it a little farther for entertainment. The new complex may force Cinema Arts, 612 Second St. S. (Division Street), to roll its final credits.

Cinema Entertainment will build an eight-screen, 1,650-seat complex at the corner of 15th Avenue and Division Street in Waite Park, a spot Cloud Drive-In theater once occupied. The Cloud Drive-In closed after its 1985 season.

Cinema Entertainment also owns the Crossroads Cinema six-screen complex near Crossroads Shopping Center and the Ten Hi Drive-In on U.S. Highway 10. The Ten Hi Drive-In closed after last season.

"The demand for movies is up," said Dave Ross, co-owner of Cinema Entertainment along

with his brother, Robert. "We're not really able to serve the whole market area."

With the construction of the new complex on the west end of the St. Cloud area, the future of Cinema Arts remains uncertain. Ross is unsure whether the St. Cloud market can sustain 17 movie theaters, he said.

"If we can retain the Arts there, we'll try to do that," he said.

"I'm glad it's an 'if,'" said Mary Stevens, administrative aide to the St. Cloud Downtown Association, which has been in contact with Cinema Entertainment concerning the Arts. "The business itself has a long standing as a business in the downtown area."

"I would like to see them not move," said Chris McNamara, owner of the Lake George Beach Club on Seventh, which leases the basement of the Cinema Arts building. "We do get business both before and after a movie. They generate business for my business."

Cinema Arts opened in 1969 as a one-screen theater. Two more screens were added in the early 1970s.

If Cinema Arts closes, the Ross brothers will lose the

business of SCS students, Stevens said.

"We think they would be missing that St. Cloud State market," Stevens said.

But Ross said students are able to get to the west side theaters. Cinema Entertainment has done studies with coupons to compare the numbers of SCS moviegoers at the Cinema Arts and Crossroads complexes. "It seems that the student population attends the Crossroads theater in direct proportion," Ross said.

An expansion of the Arts was considered, but the high cost for property, the large amount of people crossing Division Street and limited parking halted the idea, McNamara said. "They did make some very good attempts to stay downtown," he said.

One of the factors which influenced the new complex location is the area in which most of the customers live. Ross estimated more than three-fourths of the population of the trade area is west of Crossroads, including rural people. "They would much prefer coming to the west," he said.

The \$1.8 million complex will open June 24.

Perpich

from Page 1

financial analysts who determine the state's credit rating are supporting another bonding bill.

"Senators don't want to have to make the tough decisions about whose projects get on the lists and whose don't," Perpich said. "They're not being responsible."

SCS President Brendan McDonald said the university's efforts to buy property surrounding the campus is contingent on the approval of the bonding bill.

"If the land is not purchased soon, it will be overtaken by private development," McDonald said. McDonald noted that if the university was unable to purchase the land soon, it would become three times more expensive in a few years.

Perpich also addressed the need for support for the Greater Minnesota Corp. during the press conference. Perpich and the Legislature are currently at odds over \$95 million in surplus state revenues allocated to the Greater Minnesota Corp. in January.

Legislators want to use portions of the money to restore cuts made last legislative session in renters' credit, pay for



Dianne Williams/Staff Photographer

Gov. Rudy Perpich briefed SCS President Brendan McDonald and other administrators in the President's Conference Room Tuesday. Perpich discussed his \$442 million bonding bill of which SCS hopes to get money for a land purchase.

highway and bridge work and increase funding to local school districts.

The Greater Minnesota Corp. is a newly developed public corporation developed in an effort to stimulate research and product development throughout the state by focusing on rural areas.

Perpich said he was willing to make accommodations with the surplus state revenues if the

Legislature would approve a permanent source of funding for the Greater Minnesota Corp.

"The Legislature has had a history of taking money and putting it into the University of Minnesota for basic research," Perpich said. The Greater Minnesota Corp. will utilize the State University System resulting in a "spin-off" of product development and applied research throughout the state.

AIDS discrimination similar to polio hysteria

by Margaret Wilson
Staff Writer

Stephen Cooper thinks people with AIDS are experiencing today what polio and epilepsy victims did years ago—disease discrimination.

Cooper, director of the Minnesota Human Rights Commission, explained to a Stewart Hall Auditorium audience Tuesday people's rights and responsibilities that can combat that discrimination.

Cooper spoke as part of AIDS Awareness Week, "Days of Your Lives: An Age of AIDS," which featured speakers and presentations all week at SCS.

It will take more than the law to end discrimination against people with AIDS, he said.

"The law requires that we treat

people with AIDS with compassion and support," Cooper said. "But, more importantly, our human decency requires it. The laws do not instantaneously address or remove prejudice."

People with AIDS have a disease and therefore a disability but that is not cause to treat them different than people without disabilities, he said.

"You may not discriminate against somebody who has a disability. The only time you can treat a person differently is if you can show that the disability requires a different treatment and you come to the conclusion based on scientific fact—not fear, suspicion, prejudice, hysteria or other misinformation."

Cooper answered questions

See AIDS/Page 7



Nathan Haler/Staff Photographer

Stephen Cooper, director of the Minnesota Human Rights Commission, told a Stewart Hall Auditorium audience Tuesday evening that disease discrimination is older than racism.

SFC chair asks three members to resign from positions

by Heather Gay
Arts/Entertainment Editor

Three Senate Finance Committee (SFC) members were asked to resign by Chairman Bill Prince Wednesday.

Prince asked Bob Olson, vice chairman, Dan Palmer and Terry Boevers to resign because they did not perform to SFC standards, he said.

A fourth member of SFC also resigned without being asked. Scott Thomas told Olson Monday he was planning to resign. He also told Pat Gambill, SFC adviser, he was resigning before the meeting Wednesday.

Thomas did not know the

other members were going to be asked to resign, he said.

"I got frustrated because I feel there's a lack of leadership, direction and there is a definite need for a change in the way the budget process is handled," Thomas said.

SFC could be more efficient and get things done faster, he said. "They get tied to technical policies and procedures. They're playing the politics role too much and trying to do more than they really need to," Thomas said.

Prince requested the resignations as a result of absenteeism and tardiness at meetings, he said. "Those I could negotiate on, but the main thrust of the

committee is to sit down and do budgets in the spring," he said.

SFC was scheduled to review next year's budgets Sunday, but the three members were absent. "Everybody was asked if they could make it to the meeting Sunday," Prince said. "Everyone at the meeting Wednesday said, 'Yes,' including these three."

Olson was shocked at Prince's decision to ask them to resign during the middle of the meeting, he said.

"You cannot fill this committee anyway," Olson said at the Wednesday meeting. "Fine, I missed a special meeting if that's what it comes down to. It boggles my mind to do something

like this in the middle of a meeting. I would have liked more advance notice."

As vice chairman, Olson was expected to be at the meeting Sunday, Prince said.

"Especially being in the executive position, it is mandatory. To miss it, as far as I look at it—[including the president and vice president of senate—it would harm the committee to have someone in the executive position who did not fulfill their responsibilities while expecting everyone on the committee to fulfill theirs," Prince said.

An additional reason for asking one of the members to resign was lack of dedication to the

budget process SFC follows, Prince said.

One member did not contact an organization assigned them about next year's budget. "They were meant to be keeping in contact with them at least every other week," Prince said. "The organization spoke to me, and upon receiving their proposed dollar allocation for next year, they asked who their contact person was."

"When these people applied to be on SFC they were asked if they have enough time to put in to the work, and they all said, 'Yes,'" Prince said. "When they don't show, it speaks for itself."



Alex Haley
Journalist and Author

**A Special Message from
Alex Haley for
minorities about careers
in journalism**

My career as a journalist began in my spare time with lots of desire and no formal training. Minority news professionals were scarce then and getting into the news business was tough.

Things have changed some, but not enough. There are still far too few members of racial minorities pursuing news careers or being given a chance to do so.

If you have talent as a writer, cartoonist, graphic artist or photographer and you're interested in a career in the news business call this number toll free 1 (800) 331-1750. Ask for Operator 128. In Nebraska call 1 (800) 343-4300. You'll get free information from the Society of Professional Journalists. Remember, journalism needs minorities, and minorities need journalism.

1 (800) 331-1750

The Student Housing Specialist

Hamilton Property Management

**11 new locations
Call now 251-1455**

Positions now opening for the following Student-Media positions at KVSC

Program Supervisor

Duties: Oversees the music and production departments as well as the announcers. Responsible for the On-Air sound.

Qualifications: The applicant must have a high interest in Non-Commercial radio and alternative music.

Salary: \$4,000 / year

For more info. contact Andy Valenty at 255-3066.

Administrative Supervisor

Duties: Oversees the business department of the station, assists in marketing department development and personal management.

Qualifications: A general business background. Ability to work closely with people.

Salary: \$4,000 / year

For more info. contact Steve Seiberling at 255-3053.

Marketing Director

Duties: Coordinates the Public Relations department with the stations sales efforts in one department.

Qualifications: A Marketing major of minor. Interested in personal selling.

Salary: \$4,000 / year

For more info. contact Jerry Giese at 255-3126.

All applicants must be highly motivated individuals and willing to work 30 hours per week. Applications due April 13, 1988. Stop by KVSC or call 255-3066 for more information.

Editorials

SFC resignations raise question of commitment

Bill Prince, Senate Finance Committee (SFC) chairman, asked an important question during Wednesday's SFC meeting.

Prince asked three SFC members to resign as a result of their demonstrated lack of dedication to the budget process and their absenteeism and tardiness at meetings.

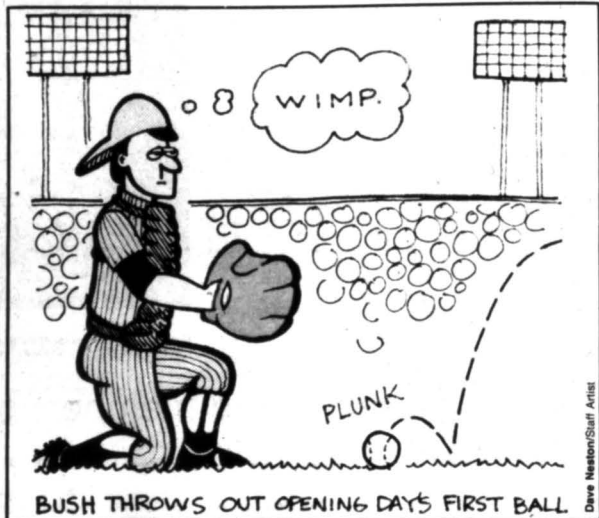
The three members answered that important question with an equally important response—they voluntarily resigned.

Those were the questions openly asked and answered at the meeting, but the discussion during the meeting should have raised additional questions about the workings of SFC in the minds of SCS students. Is the committee entrusted with the management and allocation of student money handling its responsibility as it should?

Determining budgets—budgets that include student dollars—for university organizations is a task that needs to be approached with dedication and commitment. Because SFC members apply for their positions, applicants should have expected such qualities would be necessary. Yet, comments made during the meeting would indicate former members were either unaware of the seriousness of their business or were unwilling to dedicate the required time and effort.

Scott Thomas, a SFC member who also resigned Wednesday but without being asked to do so, cited frustration with the lack of leadership and emphasis on technical policies and procedures within the committee as reasons for resigning. While any group of people working together is likely to be plagued by internal difficulties, it is unfortunate for both SFC and SCS students that group politics interfere with the intended goal of the organization.

Prince was just and fair in asking the three members to resign. However, perhaps the committee and students would have benefited more from an agreement of the members to recommit themselves to better communication/ SFC, which has experienced a large turnover rate in the past, will only be further weakened by the loss of four members who were familiar with SFC procedures. SFC now faces the additional task of replacing the members during a crucial period when budgets should warrant their full attention.



Dave Nelson/Staff Artist

Administrators prove students come first with plans for new parking ramp

In announcing revised appropriations in funding for the State University System, legislators have turned one university's dream into a nightmare and another university's nightmare into a dream.

Legislators were forced to reconsider budget requests after the University of Minnesota's (U of M) \$221 million "reserve fund" came to the attention of lawmakers.

As a result, the U of M's dream of "Commitment to Focus," designed to propel the university into the nation's college elite, was destroyed.

In an effort to restore public confidence in the state's largest university, legislators decided to cancel all budget requests, forcing the U of M to dig in to its reserve fund as a

show of good faith.

With the extra money available from the U of M decision, SCS officials were able to secure funding which will begin turning the nightmare of parking on campus into the dream of the long-awaited parking ramp.

SCS administrators have, in the past, repeatedly argued against the merits of constructing a parking ramp, citing cost, time and effort.

However, plans for such a parking ramp, including budgeting, have existed for five years. When the extra money was made available, SCS administrators saw a golden opportunity they could not pass up.

Rarely do university officials change existing policy solely for the in-

terests of the student body. Usually the politics of finance dictate policy, with students coming in a distant second.

In taking such quick and decisive action concerning the persistent parking problem, SCS administrators have proved, at least in this case, that students do indeed come first.

The five-story parking ramp, scheduled to open the spring of 1989, where the Halenbeck lot is currently located, will be a testimony to this spirit.

Perhaps SCS students can reciprocate this spirit by having the parking ramp officially dedicated to SCS administrators.

By the way—April Fool!

Chronicle

Chronicle (ISSN 121-580) is written and edited by St. Cloud State University students and is published twice weekly during the school year and once weekly during summer sessions, except for final exam periods and vacations. Chronicle is published by students of St. Cloud State University.

Opinions expressed in Chronicle do not necessarily reflect those of the students, faculty or administration of the university. Copies of the Chronicle editorial policy are available upon request. Letters to the editor and guest essays provide a forum for readers. Letters and essays may be submitted at the Chronicle office or mailed to 136 Alwood Center, St. Cloud, Minn. 56301. Letters must be signed with the author's name, year in school, major and phone number for verification purposes. Non-students should include other identifying information, such as occupation or place of residence. Anonymous and form letters will not be accepted. Chronicle reserves the right to edit lengthy letters, as well as obscene and potentially libelous material. All letters become the property of Chronicle and will not be returned.

Subscriptions to Chronicle are available by mail, \$3.50 a quarter and can be obtained by sending your mailing address and a check or money order to Chronicle. The paper is mailed free to student teachers, administrators and interns. Second class postage is paid in St. Cloud, Minn. 56301. POSTMASTER: Send address changes to SCS Chronicle, 136 Alwood Center, St. Cloud, Minn. 56301.

Chronicle is printed by DAV Graphic Arts, 520 Sundral Drive, Waite Park, Minn. 56387. The editor can be reached at (612) 250-2449 and ad and business staff at 255-2154. Staff members can be reached at 255-4066.

Editor	Kendra Marvett
Managing Editor	Karl Puckett
Art Director	Tim Hennings
News Editor	Bob McClintock
Staff Writer	Billy Westerman
Opinions Editor	Dave Heaton
Sports Editor	Kristie Spiering
Advertising Editor	Heather Gay, Mary Eide
Copy Editor	Stacy L. Lee
Photo Editor	Shirley Jones
Business Manager	Wendy Cichanski, Heidi Elsh, Nathan Hater, Diane Williams
Advertising Manager	Steven E. Adkins
Ad Salesperson	Mark Caswell
Ad Salesperson	Mike Thompson, Lisa Yoder, Jeff Wilton, Jackie Trues
Adviser	J. Brent Norman

SCS Speculations

How has your knowledge of AIDS affected your life?



"Although it has not affected my personal life, my awareness has gone up. I know many gay people, and it is sad to see how it is affecting their personal lives."

Cassie Lund
Junior
Theater/psychology



"It has made me more responsible when meeting other people. I'm more careful about who they are and where they have been."

Brent Otto
Junior
Mass communications



"I work at Health Services, which has made me more aware of the most current information on AIDS. It hasn't affected my personal life since I've been dating my boyfriend for five years. If I were dating other people, I would be much more careful in who I decide to see."

Amy Unker
Sophomore
Art education



"It has made me more concerned about the aspects of socializing at the bars. Safe sex is the right thing to do. Awareness of AIDS is appropriate at the college level, but more needs to be done at the high school level."

Jeff Baumer
Senior
BCIS



"It is an awareness thing. It hasn't changed anything in my life since I practice monogamy."

Renee Rude
SCS career counselor

Letters

Botched ads cause anger

I am a non-traditional student who first attended SCS in the fall of 1968. At that time the student newspaper was referred to as the "College Chronicle."

This was not because it was published in comic book form but because it was considered a joke. Teachers would use it as an example of how not to write. It was a journalistic atrocity.

I returned to SCS for winter 1987 and the paper looked vaguely familiar. The style of writing was much improved and the amount of paid advertising was phenomenal. I was impressed.

However, looks can be deceiving. I became the publicity director for Students Aware of Addictions fall quarter. We are a small group trying to grow. We receive no funding from the Senate Finance Committee at the current time. Due to this lack of funding, we have relied on free advertising notices in *Chronicle*.

The Classifieds section of *Chronicle*, as of the March 25 edition, has now botched more than 70 percent of the ad copy I have submitted. I know I have poor handwriting, so everything I have submitted has been typewritten. I do not use acronyms because they can be confusing. After all, SAAOA (Students Aware of Addictions) could easily be confused with SAA (Student Advertising Association).

I also make sure to use specific starting dates when

notices are to run. Everything is also turned in before the posted deadlines.

When the copy I have submitted reads, "Students Aware of Addictions meets—" etc., and the paper reads: "SADD meets—" followed by the rest of my copy, I tend to feel this is carrying editing too far. Actually, I feel outraged.

This is only one example. They have not printed some notices at all or have printed them after the meeting has taken place.

John R. Barr
Junior
Psychology

Rape-rooted in sexist attitudes

The administration is to be congratulated for its prompt and thorough notification of the campus community about the rape which occurred behind Stewart Hall on March 19. This is an important step in dealing with the problem.

This violent attack on women is rooted in the pervasive sexism at our campus and in our community. When women are viewed primarily as sex objects, rape is the inevitable result. As educators, we all need to review our attitudes and behavior to make sure we are fostering a view of women as full human beings, truly equal to men.

For too long, women have been missing from the curriculum or trivialized in the classroom. So-called humor at the expense of women, sexual harassment, demeaning language like "girls, chicks and broads" all reinforce attitudes which lead to rape.

How can students learn to respect women as full human beings when the only women they see in history books are the wives of "great men," and the only women they meet in literature are vamps causing problems for men?

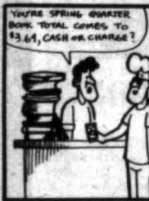
When psychology students have never heard of Carol Gilligan and Jean Baker Miller, when philosophy students are unfamiliar with Simone de Beauvoir, when history students are not taught about the androcentric bias which underlies the labeling of the period following the Middle Ages as the Renaissance, then it is no wonder students feel women have made no contributions to civilization and are merely sex objects.

We must not only try to catch rapists and care for their victims. We must attack the root causes of these problems. At SCS, we must rededicate ourselves to fighting sexism by revising our curriculum to include the contributions of women by changing our language to be inclusive of both sexes, by recognizing the abilities of women through equitable hiring, promotion and salaries, and by funding a women's center to meet the special needs of women students.

Pat Samuel
Director of women's studies



OFF CAMPUS
by
Dave Neston



Turtle Carnegie
by
Jensen
& Nelson



Sports



Brady Kreger/Asst. Photo Editor

Fore on the floor

It may not be Pebble Beach, but the main floor of Helenbeck Hall worked just as fine Wednesday for Gwen Halvorson during a practice session.

Sports Briefs

Softball

The SCS softball team opened its home season at the South Dakota Dakotadome Tournament March 17-18. SCS won its first game against South Dakota State University 10-3. The Huskies lost their second game against Augustana College 2-1. In game three, the Huskies won 2-1 against the University Nebraska-Omaha. They closed the tournament with a 8-7 victory over the University of South Dakota.

Katie Kraft was the pitcher of record in all four games. Catcher Kelly Jarvis leads the team in four categories: batting average, 500; RBIs, 5; doubles, 2; and total bases, 8.

The Huskies will play a non-conference double-header against the University of Wisconsin-Eau Claire April 4. Their home opener is against South Dakota State University at Selke Field April 5. Game time is 3 p.m.

Baseball

The baseball team will

open its home season against Bemidji State University (BSU) Monday.

The Huskies' record is 3-7 after their southern trip to Texas, Oklahoma and Missouri. BSU is 6-5-1 after a spring trip to Florida. Doug Smith, BSU head coach, is in his first season.

The Huskies will be traveling to the University of Minnesota-Duluth for a double-header April 5.

The Huskies will start North Central Conference competition against the University of North Dakota in St. Cloud April 23.

Football

SCS football season tickets are on sale at the men's athletic office and the football office.

The cost is \$30 and includes a T-shirt and admission to the scrimmage and barbecue April 23 at Selke Field.

Women's golf ready to swing into action with new challenges

by Kristie Spiering
Sports Editor

Rene Kellermann has a big challenge ahead of her, but she is ready to swing into action and get the ball rolling farther than it did last year for the SCS women's golf team.

The Huskies will tee off their season in the Winona State University Tournament April 16-17, where Head Coach Kellermann said she hopes to begin her drive to turn the SCS women's golf program around.

"I hope to do well at the tournament. This is my first season as the coach," Kellermann said. "All the women on the team are either freshmen or transfer students. We are all new, but I will work better than competitive."

St. Olaf, College of Saint Benedict, St. Thomas, Gustavus Adolphus, Luther College, Mankato State University and Winona State University will also compete in the tournament.

"I think Mankato State will be our toughest competition. They take southern trips all year; so they are probably ahead of all the teams," Kellermann said.

St. Olaf will also be tough, she said.

Kellermann is new to the SCS

golf program, but she cannot depend on veteran players to help her through her first year, she said. Jodi Huelsenstrutt, a junior transfer student, and five freshmen: Gwen Halvorson, Lori Miller, Gina Privratsky, Traci Nelsen and Paula Daugherty, will try to help Kellermann meet her goals this season.

Kellermann said she thinks the young players will benefit the team.

"It's hard to tell how our team will do because we haven't been able to practice outdoors yet, but they all look good from what I've seen indoors and from their past records," Kellermann said.

"Because the team is new and I am new, they can be structured toward my coaching. I think it will work better that way," Kellermann said. "I also feel bad that some of the players from the past haven't continued to play for SCS."

To initiate more interest in the golf program, Kellermann wants to be able to offer scholarships, she said.

"I would like to be able to offer scholarships. It would make SCS more competitive with other schools that do offer them," she said. "The program is new and that's a challenge for me. I want to help develop it so

golf is a yearly sport according to interest.

"I hope to do much better than the golf team did last year. The women this year are psyched up to win and that's a big plus," Kellermann said.

SCS will compete in the Minnesota State Championships later in the season. All the schools SCS competes against will also participate in those championships.

"It's hard to tell at this point, but I think we should have at least a couple of our players who will do well there, hopefully all of them," Kellermann said.

Kellermann, who has been playing golf since she was 12 years old, said she is qualified to make a positive change in the SCS golf program.

"I feel very knowledgeable about golf. I can normally detect when something is wrong in a swing," she said. "I can also communicate well with the players, which is very important."

"I am looking forward to a challenging year and hopefully a successful season," Kellermann said.

Women's tennis team drops match to Carleton

The women's tennis team lost to Carleton College 5-4 in a dual match Tuesday.

"Carleton turned out to be as strong as we had figured they would be," said Head Coach Larry Sundby.

Senior Shanlee Bahl, the Huskies number one singles player, lost in a close three-set match. Melissa Heinen, number two singles, won her match. Ann Litchy also won her match playing in the number six singles position.

In doubles action, the number one team of Bahl and junior Andrea Aaker won its match. Sophomore Judy Blalock and Litchy combined at the number three doubles slot for victory.

After the Gustavus Adolphus match, the team will begin its North Central Conference schedule.

"After we get past Gustavus and into the conference teams, we should be winning our fair share of matches," Sundby said.



Bill Jones/Photo Editor

Number two singles player Melissa Heinen swings into a win Tuesday in a match against Carleton College, Northfield, Minn.

AIDS

from Page 3

about issues that have infuriated many people—AIDS testing in the work place and insurance costs.

AIDS testing, which is regulated by law, can only be done if it can be demonstrated by the employee that the nature of the job requires it, Cooper said.

"A business can only test for AIDS if they can show some job relatedness to the test," Cooper said. "The problem with testing is that it can give a false sense of security."

"My answer to insurance issues are not definitive but typically most insurance companies agree to insure 100 percent of the work corrected for age but not any particular disease," Cooper said.

The Human Rights Department has been one of the most aggressive departments in the United States for protecting AIDS victims, Cooper said.

The Minnesota department handles about 2,000 cases a year, of which 50 or 60 are AIDS cases, he said. There has been a drop in AIDS cases the last few months, he said.

The Human Rights Commission has received out-of-state phone calls inquiring how the Northwestern Airlines case was settled.

Initially, the airline made an announcement that it would not let people with AIDS fly on Northwestern planes. Later they required people with AIDS to fill out special forms.

The commission then filed a lawsuit, and it was settled in about a month, Cooper said.

That type of discrimination is older than racism and is similar to the hysteria that was created epilepsy and the polio epidemic, he said.

"Probably even older than race discrimination is disease discrimination," Cooper said.

Despite the increasing number of AIDS victims, AIDS can be stopped, he said.

"It is very easy to control transmission of AIDS because there are only two ways of transmission," Cooper said.

Avoid capital gains tax. Support the American Heart Association.



- By supporting the American Heart Association you may:
- avoid capital gains tax on appreciated securities or other property
 - reduce current and future income taxes
 - provide a lifetime income for yourself or beneficiaries

It may pay you to inquire about the American Heart Association's Planned Giving Program by contacting your local American Heart Association.

WE'RE FIGHTING FOR YOUR LIFE

Introducing Northern Lights Baptist Fellowship

You are invited to attend our initial public service, **EASTER SUNDAY, April 3** at the North Community Center, 1212 29th Ave. N. (in Little Theatre) at 11 A.M.

Northern Lights is a new church created to meet today's stresses. Pastor Ronald Miller is a young minister who personally knows the struggles people are confronted with today.

Bring a friend!



Sorry—If you are looking for religion... we can't help.

Sharing a new life in Christ!

We specialize in personal attention!

Try a one month trial membership at
Exclusively Woman Fitness Center...
We'll get you started and keep you going!

Student memberships available

- *50 Exercise classes weekly
- *Low impact aerobics
- *Stationary and free weights

- *Tanning
- *Child care
- *Massage



Exclusively Woman

FITNESS CENTER

1510 W. ST. GERMAIN 251-1980



HALENBECK APARTMENTS

Now renting for **SUMMER** with options to stay for fall 1988

Large private room in newer 4 bedroom, 2 bathrooms apts.
Excellent location to SCS: 5th Ave. and 11th St. S.

- * Air Conditioning
- * Coin Laundry
- * Individual Lease
- * Quiet Building
- * Free Temporary Storage
- * Free Cable TV
- * Free Off Street Parking
- * No Application Fee

\$349 / Person Summer - Deposit \$125
\$549 / Person / Fall Quarter 1988 through Spring 1989
Summer residents get 1st choice for Fall 1988
For additional information call

259-0977

Earn while you learn.

Become a Manpower temporary. You can work at good jobs between your studies and earn good money, too. Plus, you'll be getting real-life business experience. Additions for your resume. Fringe benefits. And referral bonuses. Take a study break and call now.

MANPOWER
TEMPORARY SERVICES

251-1924
3400 First Street North
Suite 101

Serving St. Cloud
over 14 years.

**THIS YEAR
PUT AN END TO YOUR
DRAIDY HABIT**



T H N K

LIFE

**Students Against Drunk Driving
Awareness Day**

In Atwood Center

Wednesday, April 6th, 1988 - 9:00am - 4:00pm

Arts / Entertainment

Sculpture lost for more than two decades is found

by Karen Jacobs

After being lost for 21 years, a sculpture donated to SCS by a former student finally found a home in February.

Roger Schwittalla sandblasted a granite sculpture of Odin, a Scandinavian mythological god, in 1964. Odin presides over those slain in the battle of Valhalla.

"When Schwittalla created the granite relief sculpture, he donated it to SCS with the understanding it would be on permanent display somewhere in an art facility," said Merle H. Sykora, associate professor of art.

The sculpture was not mounted because of plans to change the department's building location. Instead, the sculpture was stored in the art department in Headley Hall.

"The piece never got mounted because we never had a home," Sykora said. "In the process of not having a home, the piece was forgotten. In the process of making the move, it got buried."

The sculpture of Odin remained buried until last spring when it was discovered in the Brown Hall basement, where SCS Printing Services is currently located.

"It was lying in the corner of a little boarded-off cubicle," said Dave Gamble, inventory control supervisor. "When I went over to



Heidi Elhalt/Staff Photographer

A sculpture donated to SCS by Roger Schwittalla 21 years ago was recently discovered in the basement of Brown Hall.

do my inventory and clean up, it was lying there."

Gamble had several options as to what to do with the sculpture, but he knew it belonged to the state, he said.

"I thought it was too unique to just throw in a pile with everything else, so I decided to do some checking on it," Gamble said.

Gamble matched Schwittalla's last name and first initial engraved on the sculpture with his name in the SCS Archives. Gamble also found a newspaper story on the sculpture's original donation.

After contacting Schwittalla in Michigan, Gamble took the sculpture to the art department. Sykora did not find out about it until he received a letter from

Schwittalla in response to an alumni letter concerning an endowment fund established for Kiehle Gallery.

"We received a promise of a question about why this piece had never been installed," Sykora said.

After finding the sculpture in the office of the art department,

Sykora and other art professors decided to mount it on the front of Kiehle. They felt the sculpture would make a statement without being too dramatic, Sykora said.

It took nearly a year before the sculpture was mounted because special brackets had to be made by Auxiliary Services. The sculpture was mounted in late February.

Bingo has never been so big B-4

by Lisa Meyers
Kim Leither
Meg Lepper

It is exhilarative. It is addictive. It is becoming an American epidemic.

America is currently in the midst of a bingo binge, according to William Eckenberger of *Philadelphia Inquirer* magazine. Industry experts estimate that 52 million Americans are bonkers over bingo.

Nearly 70 percent of the nation's bingo players are between the ages of 18 and 44, Eckenberger said.

As a form of recreation, bingo is topped in popularity only by swimming, bicycling and camping. It ranks ahead of bowling, jogging and watching television sports.

"It's the best pastime you can have. You never get a



Dave Newton/Staff Artist

hangover," said Phyllis Ruff, a bingo enthusiast.

For SCS junior Pat Tonnel, bingo is a time to get together with family members and have fun.

"Dinner and drinks at a restaurant can be much more ex-

pensive than bingo," said Tonnel, a regular player at Pot O' Gold Bingo. "This way I'm giving to charity and having a great time too."

Bingo, now legal in 45 states, is categorized as charitable gambling. It has raised more money than any other game in

history, according to Eckenberger.

A bingo hall must obtain a non-profit charitable organization that is recognized by the state in order to operate.

Pot O' Gold Bingo, 1545 Highway 23 N.E., operates for

the Minnesota Gaelic Cultural Festival. Proceeds from the Bingo Emporium, 2820 First St. S., go to the Central Minnesota Arts Council, the Cure Center (a home for unwed mothers), the Central Minnesota Task Force for Battered Women and Cathedral High School.

"We rotate on a regular basis so customers know where the money goes to each night," said Deb Schmidt, site manager of the Bingo Emporium.

"We've changed the image of gambling. It's a recreation," Schmidt said.

The Bingo Emporium, formerly known as Bingo on the Mall, outgrew its original building and moved to its current facilities in October 1986.

The Charitable Gambling Control Board declares laws limiting the number of sessions a bingo hall can run, said Dawn Clarke, administrative office assistant for Pot O' Gold Bingo.

"We're allowed to pay out \$3,000 per session. This breaks down to \$100 on regular games, \$500 on coverall (a game in which every number on the card

See Bingo/Page 13

A Closer Look. . .



Heidi Ehart/staff Photographer

The Kiehle Visual Arts Center Student Gallery is filled with oil paintings by Joe Treska, SCS student. Treska's work is the appropriation of the work of famous artists. "It's my interpretation of their paintings," Treska said. The exhibit blends impressionistic and contemporary landscapes by combining shades of green, blue and other stimulating colors. Most of Treska's paintings are limited to about 3 feet by 5 feet to conform to home space and limited studio space, he said. The paintings are on display through Saturday.

Roadtripping

by Todd Davis

There just is not a lot going on in the area music scene this weekend.

I know you are saying, "But Todd, it's spring—there should be music constantly filling the air." My only reply is, "Maybe it's the calm before the great musical storm." Yes, that has to be it, so I guess all we can do is look forward to next week—or the next.

Mark these dates on your calendar:

April 9—UPB presents a free concert on the Atwood Mall featuring **Stickman**, **Mike One**, **The Clams**, **House of Mirrors** and **Big Mambo**. More on that next time.

April 11—Quite possibly the hottest show of the year happens on this date. **Robin Hitchcock** and **the Egyptians** invade **First Avenue**, Minneapolis, in support of their latest release, *Globe of Frogs*.

See Trip/Page 13

Neil Simon's 'Biloxi Blues' invades area screens with Broderick's humorous wit

Review "Biloxi Blues"

★★★★

by Lynette Frohrip
Staff Writer

"Biloxi Blues," the second part of Neil Simon's autobiographical trilogy, has reached the St. Cloud movie scene.

Like its predecessor, "Brighton Beach Memoirs," "Biloxi Blues" is an adaptation of Simon's Broadway play of the same name. The film maintains the sly, humorous excellence that characterizes most of Simon's scripts.

Mike Nichols, director of "Heartburn" and "Ironweed," directs his first Simon movie.

Whereas most of Simon's movies are strict and straight for-

ward comedy, Nichols brings a little drama to this film.

The year is 1943—at the close of World War II. The movie makes a convincing period piece, due largely to the wonderful cinematography of Bill Butler.

"Biloxi Blues" is the story of Eugene Morris Jerome (Matthew Broderick), a young man who has never ventured far from Brooklyn until he is drafted and sent to basic training in Biloxi, Mississippi. At boot camp, Eugene and other recruits endure the discipline of boot camp while stumbling into adulthood.

It is Eugene's ambition to stay alive, lose his virginity, fall in love and become a writer. The movie takes the audience through the realization of most of these goals in a tender but comical manner.

As in the preceding film, "Brighton Beach Memoirs," the viewer sees everything through

Eugene's point of view as he documents events in his daily journal.

The part of Eugene is in the capable and talented hands of Broderick ("Project X," "Ferris Bueller's Day Off"). Broderick created the role of Eugene on Broadway in both "Brighton Beach Memoirs" and "Biloxi Blues."

Broderick fits the part like a glove. He delivers a funny and appealing performance that gives the audience an instant fondness for the character and the film.

Supporting characters include Christopher Walken ("Deerhunter," "At Close Range") as Drill Sgt. Merwin J. Toomey, a typically semi-psychotic officer with his men's best interest in mind.

There is also a host of other skilled supporting performances

by Broderick's fellow recruits.

"Biloxi Blues" is a fine effort by Simon and Nichols, although it does seem to fall short in some instances. The mood of the film sometimes changes so quickly viewers feel they are suddenly watching a different movie.

In an effort to increase the importance of the role of Eugene from its somewhat smaller and more narrative style on Broadway, the film often misses the opportunity to explore some of the other characters and their relationships.

Overall, the movie is highly enjoyable and entertaining. It offers a group of consistently good performances supported by the clever and witty dialogue.

Calendar

2 Event If you are ready to conduct a little funny business, head for the Guthrie Theater, St. Paul. Lynda Barry, noted cartoonist and writer, is featured in an 8 p.m. slide and lecture presentation entitled "My Funky World." Barry's cartoon strip, "Ernie Pooks Comeek," is syndicated in 30 papers. She has produced a wide variety of work, including a coloring book that won praise from Ms. and Screw magazines. Her work focuses on the ups and downs of singles romance and childhood vignettes. For more information, call 377-2224.

2 Theater Conflict is the basis for the latest production at The Children's Theatre Company, Minneapolis. "The Troubles: Children of Belfast" is a production centering around the troubles Northern Ireland has been involved in for centuries. It takes a close look at children caught in the middle of the turbulence. It is set in Belfast, Northern Ireland, but could be replaced by any city involved in religious, race or political conflict. For more information, call 874-0400.

6 Music For a change of musical pace attend a joint recital given by five women in the Performing Arts Center recital hall. Kay Fleck, Tracy Henke, Jane Hovey, Chris Ann Johnson and Patricia Ziebol will perform selections that include Handel's "Angels Ever Bright and Fair" and Vivaldi's "Laudamus Te from Gloria." The five vocal performers are students of Maebeth Gyllstrom. The performance begins 8 p.m. and is free and open to the public.

7 Music Classic culture does exist at SCS if you look hard enough. **Sigma Alpha Iota** fraternity will present a recital of selections from Beethoven, Hindemith and Pryor. Sigma Alpha Iota is an international professional women's music fraternity with a chapter on campus. The fraternity provides exposure to professional musicians, scholarships and performance opportunities. It begins 8 p.m. in the Performing Arts Center recital hall and is free and open to the public.

A
P
R
I
L

Depository Libraries . . .

BRINGING GOVERNMENT INFORMATION TO YOU



To find one in your area, contact your local library or write to the Federal Depository Library Program, Office of the Public Printer, Washington, DC 20401.

Murder from Page 1

Clough requested that the court appoint a psychologist and an investigator to examine Thielen before the reference hearing. Johnson granted the request and also ordered Thielen to be moved from the Hennepin County Detention Center to the Sherburne County Jail.

Thielen's parents sat beside him as he denied the charges that allege he, along with Timothy Michael Erickson, 18, 320 Eighth Ave. S., and a 13-year-old juvenile, killed Gall.

The three allegedly beat, slashed and stabbed Gall to death last Tuesday morning about one mile south of the University Bridge and just west of the SCS Talahi Environmental Studies area in Riverside Park. Police found the body in about 5 feet of water. Gall's throat and wrist were slashed.

Criminal complaints allege that the three teen-agers met in the woods to plot slaying Gall and that an interest in vampires may have emboldened them to do so.

Thielen, Erickson and the 13-year-old allegedly licked the blood from their hands and the knife they used to kill Gall. Erickson stated in a criminal complaint.

Although Dick Witschen, Sherburne County sheriff, denied there is a direct link between at least one of the boys' interest in vampires, the St. Cloud area has been affected by those reports.

Movies Unlimited, a Sauk Rapids video store, removed the movie "The Lost Boys" from its shelves because Witschen reported one of the boys seemed "fascinated" with vampires after watching that movie.

Video stores in St. Cloud say the movie has been sold out since Gall was slain.

Erickson's brother, Mark Lee Erickson, 18, 312 Eighth Ave. S., allegedly took part in the discussions about killing Gall but did not participate.

He was charged Friday with interfering with the body at the scene of death but was released from the Stearns County Jail Monday after posting \$6,000 bond.

Thielen faces a sentence of life in prison if he is tried as an adult. If he is tried as a juvenile, he may face a stern reprimand or probation, MacGibbon said.

IS GOD ALIVE?

Did Jesus really rise from the dead?

Doesn't science disprove Christianity?

You can't really trust the Bible, can you?

Are you tired of being religious? So are we!

DOES IT REALLY MATTER? WANT SOME FACTS?

Stop by or call Dave or Dan at 407 Stearns ext. 3514 for a FREE book by Josh McDowell.

Campus Crusade for Christ.

LEFT OUT IN THE COLD?

Feeling isolated as a smoker?



Health Service
Programs
Presents

Smoking Program: A Guiltfree Approach

Learn:

- The facts about smoking effects.
- How to be a healthier smoker.
- How to get ready to quit.
- How to stop for good.

6 Week Program

April 1- May 10

Call: Health Services for an appointment to discuss your smoking options.

Fee: \$2.50-\$5.00

Health Services: 255-4850



Cantina Bar and Restaurant



Upstairs on Sundays 11-11:00 p.m.

Build your own 1/3 lb. burger with basket for only \$1.99.

(Each ingredient is extra)

Downstairs

Friday: Reduced prices
Saturday: (almost) free tap beer 6-9:00 p.m.
Sunday: Free pool / pitcher specials
Monday: Monster Beers 9-11:00 p.m.

Upperclassman

Tired of student buildings?

You've worked hard...
you deserve the best.

"Brookside on the Eastside"
Efficiency 1, 2, & 3 bedroom apartments

For viewing call
Marie at
259-4534

Barclay Property Management
130 Park Ave. South
St. Cloud, MN 56301
259-0536/259-0523

Brookside 
on the Eastside

Student Staff Positions *Apply Now For 1988-89*

OPPORTUNITIES

Stress Management-Peer Educators
Campus Drug Program-Peer Educators
Lifestyle Awareness Program-
Health Advocates
Health Aide Program-
Health Coordinators
Weight Management-Class Assistants
Contraception Classes-Peer Educators
AIDS Education
Marketing and Program Planning
Newsletter Publication
Relationships-Peer Educator Training

BENEFITS

Career Experience
Quarterly Honoraria
In-service Training
Job Recommendations
Possible Academic Credit
with Departmental
Approval

EDUCATIONAL PROGRAMS



CLINICAL SERVICES

REQUIREMENTS

Full academic year commitment
6 Hours per week
G.P.A. of 2.5 minimum
Interest in Health Education
and Health Promotion
Additional Requirements
for Health Coordinators:
Standard First Aid,
CPR Certification
and must live in
Residence Hall

APPLICATION

Applications may be
picked up at
Health Service Programs

APPLICATION

DEADLINE

April 15, 1988

Interviews

April 22 - May 6, 1988

For more information call 255-4850

Health Service—St. Cloud State University

Today Thru Tuesday 4 days

\$16. off
Body Perms
Reg. \$55. Now \$39

with Sheri, Deb, Brian
with this ad...ONLY

Styled Hair Cuts

Gals or Guys **\$7.50**

with Sheri, Deb
or Brian

**25% off Redken or Nexxus
Products**

Hair Specialists

7th and Division

253-8868



**Do you know this
man and others
like him?**

**Chronicle is looking for
editorial cartoonists.**

Qualifications include artistic ability, political awareness and ability to meet deadlines. This is a paid position. Apply at Chronicle, 136 Atwood or contact Dave Neston at 253-4086.

Chronicle position

Omnibus Editor

Applications available in 136 Atwood Center

St. Cloud State University

Chronicle

A Sign of the Times



Bill Jones- 1986-1987 Minnesota College Newspaper Contest winner-News Photography.

Whether it is the drama of a student protest or the everyday qualities of the first signs of spring, **Chronicle** delivers university news first hand.

Administrator says Stewart project on schedule

Projection indicates construction on new addition will be completed in 1989

by Bob McClintick
News Editor

The Stewart Hall renovation project that began June 1987 is on schedule and within the \$7.3 million construction budget, according to Steve Ludwig, SCS assistant vice president for administrative affairs.

Prior to the renovation, Stewart Hall had 133,000 total square feet, Ludwig said. When remodeling is complete, Stewart

Hall will have 166,000 total square feet, he said.

"We think the remodeling is right on the time schedule," Ludwig said. "They are just finishing the footings for the new addition."

Donlar Construction Co., which completed the Garvey Commons renovation project, was the lowest bidder for the Stewart Hall remodeling project. Donlar won the contract with a

bid of \$7,317,000.

"The bid came within a few thousand dollars of where the university wanted it to be," Ludwig said.

The allotted amount for the Stewart Hall renovation project is \$7,381,000. "We are right on the construction budget with the \$7.3 million bid," Ludwig said.

Construction on the new addition is expected to be complete

by March 1989, Ludwig said. The final phase of the project, the remodeling of the lobby and auditorium, is scheduled for completion by the end of November 1989.

The classroom portion of phase one of construction should be complete by November, according to Brad Forbrook, architect from Pauly, Olsen, Bettendorf, Eastwood and Associates Inc. "They are ahead of schedule by a couple of

weeks," he said.

"They had to dip into the contingency fund because some footings were uncovered that needed reworking," Forbrook said. "We also have some credits that we are hoping will offset the footings."

The bulk of the demolition has been completed for phase one of the construction, Forbrook said. The second phase is scheduled to be completed by 1989.

Fees

from Page 1

of the Senate Finance Committee, including salaries, utilities and liability insurance.

□ The need to replace furniture and equipment in the student union.

□ The increasing service needs of the growing student population, such as an expanded escort service and SCS Child Care Center.

Five cents of the increase is a

mandatory requirement of the Minnesota State University Board (MSUB). MSUB is requesting the increase in an effort to retire the union debt due to the requests of many universities within the Minnesota State

University System for expansion of their student unions, said Pam Philblad, student senate president.

"It's not the kind of decision that I like to make," McDonald

said. "But what other options do we have? If we don't go the route of the increase, the services the university can offer are going to deteriorate."

Halls

from Page 1

what financial needs will be and if there will be a major enrollment decline.

"If you look at past increases in the last three years, we have been able to keep things pretty steady in terms of room and board increases—7 percent in 1987, 8 percent in 1986 and 5 percent during 1985."

The MSUB remains committed to keeping costs as low as possible for students, to remain competitive with off-campus housing and to continue to provide economic access, Miller said.

"One thing that is interesting is if you take the \$2,030 figure and break it down into a daily rate, you come up with something like \$8.90 a day for a place to stay and a good, balanced meal—that's not very much," she said.

UB

Fine Arts:
The Origins Program Exhibit:
"Hunter of the Sacred Game"
Eskimo art, artifacts, photos and videos
Exhibit Atwood Gallery
and display cases.

Concert:
"Record Release Party"
April 9, 2 - 8:30 p.m., Atwood Mall
(Rain site, Atwood Ballroom)
Admission: Free

Speakers:
Roger Boisjoly,
former project engineering major.
Morton Thiokol,
"Ethical Decisions - Morton Thiokol
and the Space Shuttle Disaster"
April 5, 12
Mar. 30, 7 p.m. Call Atwood
Atwood Civic-Penney Room
Dr. Robert Terry,
"The Ethical Use of Power"
April 6, 7 p.m. Atwood Ballroom

Call 255-2205 for more information.

Funding provided by student activity fee dollars.

Chronicle Positions

Business Manager

Salary: Honorarium

Qualifications:

Successfully completed Acct. 291 & 292 or show similar acct. experience. Be an enrolled student at SCSU. G.P.A. of 2.5. Show good communication, management and diplomatic skills.

Term: May 1988 to May 1989

Pick up applications in AC 136.

Deadline: April 15

For more info, contact Steven E. Adrian at 255-2164

Editor In Chief

Salary: Honorarium

Qualifications:

Successfully completed COMM 240 and 350 or similar courses. SCSU student admitted into Mass Comm major. Minimum of two quarters as an editor at Chronicle. Must show good management, writing and editing skills.

Term: May 1988 to May 1989.

Pick up applications in AC 136.

Deadline: April 15.

For more info, Contact Kendra Meinert at 255-2449.



United Way
It brings out the best
in all of us.



Discouraged?

Find
courage
with God and
His church.

You're always welcome at

Bethlehem Lutheran Church
336 SOUTH FOURTH AVE. PHONE 251-8356

WORSHIP: SUNDAY MORNINGS AT 8:00-9:15-10:45

ADULT EDUCATION SUNDAY MORNINGS AT 9:15 & 10:45

HANDICAPPED ACCESS 915 SERVICE INTERPRETED FOR THE DEAF

Maudy Thursday services

5:30 & 7:30 p.m.

CAMPUS PLACE APARTMENTS

Now renting for Fall 1988

Private bedrooms
Shared bedrooms

Four locations

*Microwaves
*Dishwashers
*Mini blinds
*Heat & water paid

Summer rates
\$118 private
\$88 shared

*Air conditioners
*Laundry
*Parking
*Plug-ins

Now renting for fall of 1988

Call 253-3688

POOLSIDE ATTIRE.



CLOTHES FOR THE SEMI-CIVILIZED MAN

CROSSROADS CENTER

Bingo

from Page 8

must be covered) and \$1,000 on accumulative games which can be in addition to the \$3,000," said Ron Clarke, chief executive officer of Pot O' Gold.

The charity receives 45 percent of the profits from bingo. It also receives 55 percent of the profits from pulltabs, another form of charitable gambling usually present at bingo operations.

"Most people are out to win, but they usually have a good time anyway," said Brenda Smokey, floor clerk at Pot O' Gold.

Trip

from Page 9

As for this weekend, here is the scoop. **The Clams** take the stage tonight at the **400 Bar** on the West Bank, Minneapolis. Also tonight, the **Uptown Bar** presents **Red House**.

Meanwhile, for your Saturday night enjoyment why not check out the ever popular **Blue Hippo** at the **Cabooze**, Minneapolis. It should be fun, fun, fun.



Chronicle
All the news
... first.

JULIE'S CRAFT CORNER

PROCESSING SPECIAL

THE BEST DEAL IN THE ST. CLOUD AREA

DOUBLE OR SINGLE PRINTS
AND FILM



QUALITY KODAK PAPER

YOUR CHOICE AT JULIE'S
EVERYDAY LOW PRICES.

12 EXP.....	\$2 ⁹⁹	24 EXP.....	\$5 ⁹⁹
15 EXP.....	\$3 ⁹⁹	36 EXP.....	\$7 ⁹⁹

(FREE ROLL OF FILM IS DISC OR 24 EXP. ROLL)

THE LARGEST SELECTION OF CRAFT AND CAKE DECORATING SUPPLIES.

JULIE'S CRAFT CORNER

27 SOUTH 7TH AVE. DOWNTOWN — ST. CLOUD

OPEN MONDAY-FRIDAY 9 AM-6 PM • SATURDAY 9 AM-5 PM

GREETING CARDS 20% OFF EVERY DAY!

COUPON

FILM DEVELOPING SPECIAL

\$100 OFF!

Developing & Printing
Color Print Film

Julie's Craft Corner

VALID THRU 4-30-88

JULIE'S CRAFT CORNER

Results Property Management

Taking applications for
Summer and Fall



12 month Discount Plan!

- New 3 & 4 bdrm. units
- Microwaves
- Air conditioned
- Private rooms
- Adequate parking
- On-site laundry
- Close locations
- Quality living

Phone 253-0910

MOVIE DIRECTORY

CINEMA ARTS 251-12-3 **BARGAIN MATINEES.**
SATURDAY AND SUNDAY
2.50 ADULTS/ 11 & UNDER 2.00

STARTING TONIGHT!

EVENINGS: 7:00 & 9:15
MATINEES:
SAT. 2 P.M. SUN. 1:30 & 3:30

Michael J. Fox

Bright Lights, Big City.

JOHNNY BE GOOD (PG-13)
EVE. 7:30 & 9:30 SAT. MAT. 2 / SUN. 1:30 - 3:30

BILOXI BLUES (PG-13)
EVE. 7:10, 9:20 / SAT. MAT. 2/ SUN. MAT. 1:30, 3:30

CROSSROADS 251-1-3-4-5-8 **BARGAIN MATINEES**
SAT. & SUN.
2.50 ADULTS 11 & UNDER 2.00

DEMI MOORE

THE SEVENTH SIGN

MICHAEL REIN and JURGEN PROCHNOW

THREE MEN AND A BABY (PG)
TODAY AT: 5, 7:10, 9:15/ SAT. & MON.: 1:30, 3:30, 7:10 & 9:15

GOOD MORNING VIETNAM (R)
TODAY AT: 4:45, 7:00, 9:15/ SAT. & SUN. MON.: 1:30, 3:45, 7:00, 9:15

A NEW LIFE (PG-13)
TODAY AT: 5, 7:15, 9:20/ SAT., SUN. MON. AT: 1:30, 3:30, 7:15 & 9:20

THE FOX AND THE HOUND (G)
TODAY AT: 5, 7/ SAT., SUN. & MON. AT: 1:30, 3:30 & 7

MASQUERADE (R)
SHOWS EVENINGS ONLY AT 9:15

STARTING TODAY

The Name In Laughter From The Hereafter

Michael Keaton is

BEETLE-JUICE

TODAY AT: 4:45, 7 & 9:10/ SAT., SUN. MON. AT: 1:30, 3:30, 7 & 9:10

Car Stereo Installation

Think Twice Before Doing It Yourself



Alpine AM/FM Cassette Player
Alpine's car audio performance is legendary. This full-size cassette AM/FM receiver (model 7156) features:

- Electronic Tuning
- Auto-Reverse
- Separate Bass and Treble Controls
- 4-Speaker Fader
- Digital Quartz Clock

SALE \$239⁰⁰

great and we can give you a demonstration that shows you the audio system.

So the next time you need mobile electronics — or if you're looking for a car stereo — call Audio King Car Sales and Installation Centers.

Alpine • Yamaha • Coby • Clarion • A/D/S • Pyle

AUDIO KING

Division Place
Fashion Center
253-5099

• Our national award winning installers do the job right the first time.

• We install car stereo systems quickly and efficiently.

• Audio King Electronics Installation Guarantee is good for as long as you own the vehicle.

Installing a car stereo system properly is a lot more difficult than you may think. In fact, it's a delicate procedure that requires an array of specialized tools and considerable experience.

That's why we urge you to have your car stereo installed at your nearby Audio King Car Sales and Installation Centers.

Audio King sells all the equipment you need to make your car sound like you're driving a car.



Chronicle position

Assistant Sports Editor

Applications available in 136 Atwood Center

HOUSE RISTORANTE

5th Avenue Downtown

Sunday: Import Beer Specials

5 p.m. - midnight

Monday: Margarita Specials

5 p.m. - midnight

Tuesday: Beer & Pizza night

5 p.m. - midnight

Daily Happy Hours 5-7 — Pull Tabs — Bar & Beer Specials

Weekly Delivery Specials

\$5.95 plus tax

12 inch, any

1-item pizza with
double cheese

\$10.85 plus tax

TWO 12 inch, any

1-item pizzas

THIN CRUST or DEEP DISH
available with both specials



252-9300

FREE DELIVERY
LIMITED AREA ONLY



Classifieds

Housing

RENTING for summer and fall. One- and 2-bdrm apts. Also, single rooms. New Stateview Apts. Close to campus. 251-9418.

HOUSING for women, next to campus. Attractive, orderly, well-maintained. No parties. No smoking. Parking, micro, laundry, large living area, furnished, singles, doubles, very reasonable. 252-9103.

STUDENTS: New apt bldg: summer rates \$68/shared, \$118/private. AC, dw, micro. Carol, 253-3688.

BRAND new: \$99-\$118 for summer, \$118-\$205 for fall, 11 locations, 251-1455.

SUMMER and fall housing. One- and 2-bdrm apts. Good location, off-street parking. Call 253-1462 after 4:30 for rules and info.

LOOKING for your own bdrm, plenty of free parking, convenient location across from campus? Join us this summer and fall at the Classic on 12th, professionally designed 4-bdrm apts. We offer 1st class stylish apts with luxurious amenities like micro, dw, ac, extra on-site laundry facilities, main entrance security system intercom controlled from your apt and patio doors. Our private bdrms include TV and phone outlets, spacious closet, and window blinds. We want you to live at the best if you appreciate a first-class environment where an on-site caretaker maintains the building and grounds impeccably clean for you and assures you of a quiet atmosphere to accommodate your sleeping and study schedule. We want you. Check

out our standard features like well-lit interior/exterior areas, individual lockers on all bdrms, beverage vending machines, state of the art soundproofing and fire alarm systems in every apt; features that others may or may not include or charge extra for. This is our first offering for Summer '88 and fall '88 school sessions. Limited accommodations available. Call the Bedined Co., leasing division to set a time to view the best value in housing across from campus 253-0770. Individual leases, reduced summer rent! Call now!

RESERVE early: women, men. Clean, convenient, parking, snow plowed, laundry, tanning, BBQ, basketball! Full house rental \$165/each. Four, 5, 6-person apt. Two-bdrm apt. 4-bdrm apt. 1-bdrm, single room \$189, double \$129, triple \$39. Summer singles \$79/mo. Model college of Hair Design. Call Jan, Randy at 253-4222.

WOMEN: furnished, single or doubles for summer, utilities paid, free laundry, free parking, close to campus. Call 253-1662 or 253-1462.

RECENTLY remodeled 2-bdrm apt. Furnished, carpeted with lots of room for 3 people. Available now, \$125/each. Call 253-1462, evenings.

SUMMER or summer/fall. Private room in new 2-bath apt. 1 block from SCS. Cable TV, parking, coin laundry, individual lease with no application fee. \$349 for summer, \$549 for fall quarter. Details? 259-0977.

NOW renting for summer and fall. New Olympic Apts. Micro, dw, ac, individual bdrms and individual refrigerators. No application fee. Call now. 259-9544, Andy.

WALNUT Knoll II now renting for summer and fall. Great, close in location. Micro, dw, 2 full baths, private bdrms, laundry on each floor. Call today, 252-2298, Jerry.

WOMEN: close to campus. Summer and fall, utilities paid, laundry, 251-4070 or 251-1268 after 5 p.m.

IMMEDIATE openings summer and fall. Campus Oaks Apts—single bdrms, security systems, parking, micro, laundry, heat included, very convenient location. 251-4070 or 251-1268 after 5 p.m.

WOMEN: summer and fall vacancies, furnished triplex, near campus, utilities included, washer/dryer. Call Dale, 253-7499 after 5 p.m.

WANTED: 3 non-smoking women. One single \$165, 1 double \$150/each. Utilities paid. Two blocks from college. Four singles open for summer, \$100/each. 259-0224.

CLOSE to campus, competitive rents for summer and fall. Free parking, basic cable, heat paid, security building, micro, and more—where? Bridgeway West, 4-bdrm apts. Will rent individually. Call today for more info. Preferred Property Services, Inc. 259-0063.

ONE-bdrm apt available April 1, furnished, utilities included, ideal for 2 people. Also, female housing for summer. Private rooms \$100—many extras. Free parking, close to SCS. 251-8564.

LOOKING for unique apts? We have it all at The Castle. Close to campus, very competitive rents for summer and fall. Call today for more info. Preferred

Property Services, Inc. 259-0063.

MONTH to month: quiet living for non-smoking man in 3-bdrm home with 3 SCS student-grade. Only \$100/mo plus utilities. Call Phil or Joel after 5 p.m. 255-1761.

DISCOUNTED summer rates! 259-6194, 251-1814.

COLLEGIATE View Apts now renting for summer and fall 2-bdrm units summer \$235, fall \$150. Maximum of 4 people/unit. Call Rick, 259-8796.

WOMEN: Are you tired of the noise and conditions where you are now? Want a quiet, well-kept home, close to campus? A place for non-smokers and no parties? We offer spacious rooms, laundry facilities, off-street parking, and a living room with fireplace. We are taking applications for summer and fall. Bob, 253-8027/251-6950.

AVAILABLE summer and fall. One- and 2-bdrm apts. Heat paid. Laundry, parking. Also, women to share house. Beautiful, private rooms. Close to campus, 253-4042.

AVAILABLE fall. New Stateside Apartments on 6th Ave S. Four-bdrm and efficiency with ac, dw, micro, security, 10-unit building with garages. Close! 253-4042.

CAMPUS Management summer, fall, new! Single rooms, dishwasher, micro, ac, laundry, parking. Also, convenient, close, shared facilities. 259-6194, 251-1814.

SUMMER fall efficiencies. One-, 2-, 4-bdrm apts. Ask for Allan. 253-7979.

or 253-3488.

ROOMS for rent. Furnished. Spring quarter, \$150/mo. Summer \$75/mo. 611 5th Ave S. 255-0853, Shawn Harding.

WOMEN: large single room, \$140/mo, utilities paid, block off campus, free parking. Call 255-1341, 255-9437.

NEW large single rooms with private baths. Utilities furnished, ac, security, laundry, dw, micro. Now renting for summer and fall. 706 6th Ave S. Call 252-9226.

MEN \$90/single for summer. Fall \$175, doubles. Rick, 259-4841, 251-6960.

ROOMS for rent. Call 253-7116.

RENTING now for summer and fall—houses, apts, individual and shared bdrms. Give us a call or stop in. Preferred Property Services, Inc. 259-0063.

CAMPUS Quarters Apts. New 4-bdrm units. Heat furnished, security, ac, laundry, dw, micro, close to campus. Call 252-9226 for summer and fall.

\$85 summer single. Very close, cable, parking. Call 252-9162 (days).

\$65/75 summer double. Very close, cable, parking, laundry. Call 252-9162 (days).

SUMMERTIME singles, doubles. Parking, laundry, cable. 1 block from Atwood. Rates vary \$65-\$125. Call 252-5162.

Classifieds

NON-SMOKING: tall, large lofed doubles \$140-\$165, singles \$165-\$175. Laundry, TV, micro, very close. Call 252-5162 days.

OAKLEAF/OAKS III APTS have immediate openings for 1-4 people in shared apt. Prices start at \$119/week. Close to campus, on busline, lots of parking. Includes heat, water, garbage and parking. Reduced summer rates. Call to make summer and fall reservations today at 252-4422. Please leave a message if there is no answer.

APARTMENT for rent. Close to campus. 251-1455.

THE Student Housing Apartment Specialist, Hamilton Property Mgmt. Info on 12 new locations. Call today. 251-1455.

SINGLE room available in apt for woman. Rent negotiable. 259-8635.

FREE, late and easy. Let us help you find your new apt. **Student Apartment Search**, 251-1455. Weekdays: 7 a.m.-6 p.m. Sats: 10 a.m.-2 p.m.

UNIVERSITY Park Place now renting for summer and fall. Great, close in location. Micro, dw, 2-4ll baths and private bdms. Call now 259-0109, Darrin.

WOMEN: for fall; 4 needed for new 4-bdrm apt. Two blocks from SCS. Dw, micro, private rooms, \$109. Carol, 253-3688.

APTS: women, summer and fall. Five locations, reasonable. 253-6606.

WOMAN: near campus, kitchen, free parking, utilities paid, quiet, \$110/mo. 251-2678.

\$114, single, female, heat paid, free parking. Call 253-0602.

AVAILABLE Oct 1: 2-bdrm main floor apt. Big kitchen and living room. Near Coburn's, off-street parking, utilities. Call 251-7732, 8 a.m. to 5 p.m., Frank.

ROOMS: furnished, \$99 to \$155. Call Kim, 253-4222. Near SCS (women).

BUDGET student housing. Rooms starting at \$125/mo. Call Apartment Finders, 259-4040.

WALNUT Knoll Apts now renting summer and fall '88. Two blocks from campus, 3-bdms with room for 4 people. Microwave, dishwasher, security building, parking. Heat and water paid. Call resident manager, 253-9423.

HOUSING: women, summer and fall. Single and double rooms. Furnished, utilities paid, laundry, parking. 253-0451.

FOR summer: Spacious 2-bdrm apt in quiet 4-plex near SCS. Ideal for 3 or 4 individuals. Must see! 253-6773.

ROOM for rent: non-smoking man. Close to SCS. Utilities paid. Special summer rates. Call 251-1449.

SUITE: 3-4 adults. One block from Atwood—Alwood, micros. 252-5162.

MAN: clean, non-smoking, non-drinker to share 1-bdrm apt this fall. Call Robbie at 259-0789.

WANTED: 3 non-smoking women. One single \$165, 1 double \$150/week. Laundry paid. Two blocks from college. Four singles open for summer \$100/each. 259-0224.

ROOMS for rent summer and fall. Call Roger, 253-7108.

AVAILABLE immediately! Needed tenant roommate for a 2-bdrm modern apt, h/w paid. Price negotiable. Call Jodi, 259-8003 or collect, 920-1778.

FOUR women to share large 2-bdrm apt, '86-'89 school year. Heat paid, no pets. \$150/each. Available summer. 253-5340.

Attention

WANTED: motorcyclist to share garage near campus, \$10/mo. Jim, 255-3741.

NEEDED: someone coming from Milaca daily a.m. to St. Cloud. Kathy, 259-4887.

TYPE—RIGHT Typing and Editing Service. Five years experience. Rates from \$1.30 to \$2/pag. Pick-up and delivery available. Satisfaction guaranteed. Call Doug at 251-2402.

NEXUS and Sebastian for your hair and skin. Atwood. 252-3338.

SPRING cleaning? Sell or purchase new or used outdoor equipment. The Outings Center. Consignment Sale April 18. For more info, call 252-3772.

RELIGION: Welcome! First United Methodist Church, 302 S 5th Ave, 251-0804. Easter services Maundy Thursday: 2 & 7:30. Good Friday: 7:30 p.m. Easter Sunday: 6:30 sunrise, 8:30 & 11 a.m.

RESUME and cover letter service. Donnelly Consulting 259-6086, English B-S.

BRIDAL head pieces, wreaths, hats and veils, \$35-\$65. Professional bridal alterations. For appointment, call 252-0951.

FOR sale: parking, 1 block away. Call 252-5182.

PROFESSIONALLY done. Resumes, research, papers, and correspondence. Call 259-5043.

AIRBAND '88: April 13. Watch for further details. Don't miss it!

CANOE trips. Crow Wing. One day and overnight. Rent a tent for just \$2.50 at North End. 256-6477. Call 218-472-3750.

Typing, word processor, letter quality. Printer, transcribing, thesis, resumes, reports, etc. To your specifications. Satisfaction our motto! Call Char, 251-4889.

WHOLESALE arts and crafts. Arts Co. op by Ragstock. Call 253-3242.

CAMP out under the stars this weekend! Rent a tent for just \$2.50 at Atwood Outdoor Rental Center. Call 253-3772.

GET your bicycle tuned up for \$15. Plenty of professional experience. 512 5th Ave S. Info, call Mike at 259-6273.

Typing: word processor, letter-quality term papers, thesis, resumes, cover letters, etc. Draft and final copy. Call Alice at AR Secretarial Services, 259-1040 or 251-7001.

PROFESSIONAL secretary will do typing. Dependable and high quality. Call 252-4630 after 5 p.m.

Employment

TELEPHONE collections \$4.85/hour, 2-3 evenings/week and every other Saturday. Average 20 hours/week. Will train. Benefits include medical, vacation, holidays. Contact Job Service, 33rd Ave S & W St. German, or call Leo at 251-2016.

PT cook positions every other week and some weekdays. Great hours and pay! Will train people genuinely interested. Previous experience with cooking is desirable, as well as experience working with developmentally disabled individuals. Pick up an application at: REM-farm, Inc., 1775 Roosevelt Road, St. Cloud, MN 56301.

EXCEPTIONAL summer opportunity—Be a counselor at Camp Wayne in NE Penn. Warm, fun family atmosphere. Specialists needed in all sports, waterfront, camping, com-

puters, arts. Campus interviews April 11. Write 570 Broadway, Lynbrook, NY 11563 or call 516-599-4562.

PAINTERS wanted: \$55/hour cash plus bonuses. Work in Minneapolis. 612-924-3448.

FEDERAL, state & civil service jobs \$18.4 to \$69.891. Immediate openings! Call Job Line 1-518-459-3611 Ext F-4672 24 hours.

RESIDENT manager position available for fall. Please send resume with salary requirements to Preferred Properties Services, Inc. 2233 Roosevelt Road, Suite 10, St. Cloud MN, 56901. 259-0063.

UNDERWRITING Rep: paid position. Responsibilities include sales and customer relations with KVSC accounts. Applications in 708 of LHC. For more info, call 255-3053.

STRESS Management Peer Educator positions available for '86-'89. Full-year commitment. Do public speaking and interviews for stress assessments. Honorarium, Cancer experience. Apply Health Services.

THINKING of taking some time off from school? We need mother's helpers. Household duties and childcare. Live in exciting New York City suburbs. Room, board and salary included. 203-622-4959 or 914-273-1626.

WOMEN: GAK Services is hiring for summer work, \$6/hr. If interested, call 1-333-2225, ask for Paul Leding for an interview.

TYPIST: hundreds weekly at home! Write: P.O. Box 17, Clark, NY 07066.

For Sale

HOT tub rentals. General Rental Center. Call 251-6320.

FORMICA table with chrome legs. Sturdy, slightly stained top. \$20. Contact Stacy after 5 p.m. at 255-9739.

APPLE II Plus Computer—259-6336. Two drives, 64 K, games, business software, manuals, monitor. Complete system, \$900.

COMPUTERS: PC's, XT's, AT's, 386 laptops, 8085, Desktops, IBM Computers, etc. Call 259-6336.

PARKING: 1 block away, 252-5162.

VESPA scooter 200cc, 4-speed. Like new, call 253-4462, Mary or Joanne.

Personals

JESUS and Satan are pretend. Question everything with unassailable honesty. Christianity is slavery. Faith is property of matter is matter. Anything that interacts with matter is material. Knowledge is freedom. Dual-Atheist, (612) 422-1126.

CHRISTIANITY is false. Einstein's principle of equivalence states that the laws of nature are exactly the same all of the time and everywhere. The laws of nature are invariant. The principle of equivalence has proven scientifically unassailable. There is no escaping the laws of nature. The laws of nature are the limits on what can exist. (Science magazine, published by the American Association for the Advancement of Science, 23 August, 1985, p. 745). The supernatural is thereby ruled out at all times and places. That is why all of the arguments for the existence of Gods and devils are false. There is always something, namely the laws of nature, rather than nothing at all. Using Gods and devils to explain human behavior, disease, disaster, good fortune, bad fortune, biology and nuclear fusion is like using Santa Claus to explain how the presents got under the tree. Gods

and devils are irrelevant and useless for explaining reality. Belief in them misdirects people away from the truth.

DO you enjoy music, theater or dance? Want to see top-notch performers on campus? Call Nikki at 259-4399 or 255-2205.

SMOKING controlling your life? Call Health Services, 255-4850, for help cutting down or quitting.

REWARDS for crime info. Remain anonymous. Call Crimestoppers 255-1301.

DARREN, can you believe it? It's our one year anniversary. I know I don't have a ring to look forward to this Saturday, but the night will surely be special. Thank God we've got some 50 more years ahead of us! I love you, Joyce.

HEY Blonde 509's, why don't you break up the monotony and visit the Baldwins some day?

BLAIR, thanks for the great lunch last week, B.K.

JESUS and Satan are reality. Question everything with the honesty of your heart. Sin is slavery. Faith in Jesus Christ is freedom. Anything that has the properties of matter has been created by God. Dial-A-Christian (612) 258-1577. (Real people—not a recording.)

CINDERS, life is but a "riddle," right? Thanks for listening—again. Someday I'll learn.

CONGRATULATIONS C.J. For being elected President of the St. Cloud Jaycees.

TECO, where are ya? We need a drummer for the Airband competition. Richie S.

THETA Chi would like to have their trophies and plaques returned. No questions asked. Thanks for your cooperation.

DAWN: thanks for the great date from the King Pin of The Baldwins.

Notices

SAM: Look at what's coming! The 2nd Annual Beach Party April 12 will be a blast! April 19 we're going to the Twins' game.

OLD time photos are coming to Atwood Sunken Lounge April 25 and 26, 10 a.m. to 5 p.m.

SEXUAL Abuse Survivors Sharing Group. Thu at 6 p.m. Lutheran Campus Ministry. Info: Sandy, 253-6843. Empower yourself!

Urban Studies Association 2nd Annual student conference presents David Abersman speaking on Urban Preservation dealing in Herbert-Itasca Room on April 8 at 11 a.m. Everyone welcome!

Give a hoot. Don't pollute. Forest Service, U.S.D.A.

Give generously to the Christmas Seal Campaign® of the

AMERICAN LUNG ASSOCIATION of Minnesota
The Christmas Seal People®

Heart Answers



Tachycardia

Tachycardia means "fast heart rate." The definition of fast depends upon the age and physical activity of the person. Tachycardia in a newborn is a heartbeat rate of over 160 beats a minute, while in the teenager or adult, tachycardia is a heart rate of greater than 100 beats a minute. Normal tachycardia occurs with fever, excitement, exercise and other similar temporary events, and treatment is not needed. Some diseases, such as an anemia or increased thyroid activity, cause tachycardia and, in those cases, the underlying diseases should be treated. Often, the cause of tachycardia is unknown but can be controlled and prevented with medications.

WE'RE FIGHTING FOR YOUR LIFE

American Heart Association

It brings out the best in all of us.



United Way

MILWAUKEE HEALTH CENTER
for Women

Caring professionals meeting your reproductive health needs.

- *Free pregnancy testing
- *Abortion services
- *Counseling for both partners
- *Family Planning sliding fee
- *Low cost birth control
- *Ultra-sound
- *Morning after treatment
- *Confidential medical writing
- *Non-profit clinic
- *Near Downtown Mpls.

Milwaukee Health Center for Women
Metropolitan Medical Office Building
Suite 902 - 825 South 9th Street
Milwaukee

(612) 332-2311
or 1-800-752-4249

Easter at Atwood!



1st 100 students to use the Recreation Center lanes or tables will receive,

A FREE surprise Easter egg!

Atwood Center hours:
April 3, Easter Sunday, 4 - 10:30 p.m.

Atwood Recreation Center

Hours:

Mon. - Fri. 8 a.m. - 10:30 p.m.

Sat. 11 a.m. - 10:30 p.m.

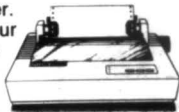
Sun. 11 a.m. - 10:30 p.m.



Celebrate our **CITIZEN** ship!

Campus Computers

Campus Computers is now an authorized dealer. Help us celebrate our citizenship with this special:



List \$239.00

Now only \$179

CITIZEN

Printer 120cps draft/ 25cps NLQ

For limited time.

Call 259-4004

Campus Computers

© 1985 Citizen America Corporation.
Citizen and the Citizen logo are trademarks of Citizen Watch Co. Ltd.

Tropical Fish • Birds • Small Animals • Dog & Cat Supplies
Aquarium Setups • Fish Supplies • Pet Food

TOM'S

PET FACTORY

80 S. 33rd Ave.
St. Cloud, MN 56301

Plaza West Shopping Center
253-6620

Campus Management

Finest in off-campus housing
Singles or doubles available
259-6194 251-1814

**The Chateau
is jammin'!**

**Come in shorts Fri. & Sat.
4 p.m. - close and receive one free
tap beer or a buck off a pitcher.**

limit one per customer per night

**Fri. - Sat. Happy hour
4 - 8 p.m.**

**All beer and liquor
2 for 1 special price**

**Saturday is Long Beach
& Long Island night**

**Happy hour is
all day Sunday!**

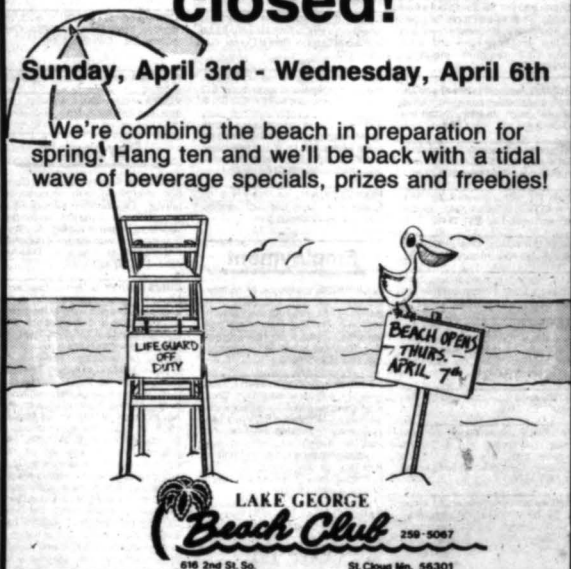
FREE tacos and broasted chicken

1004 W. Division 253-9052
Look for your valuable mug coupon
in Tuesday's Chronicle.

Lake George Beach Club is closed!

Sunday, April 3rd - Wednesday, April 6th

We're combing the beach in preparation for spring! Hang ten and we'll be back with a tidal wave of beverage specials, prizes and freebies!



**LAKE GEORGE
Beach Club** 259-5067
616 2nd St. So. St. Cloud Min. 56301